



P.O. Box 27328 | Golden Valley, MN 55427  
1-800-622-5425 | 763-546-7787 | (F) 763-546-5050  
info@mnwisplay.com | www.mnwisplay.com

May 1, 2013

Grove Park:

- Belt and tot seats may not share the same swing bay.
- Though the side use zones of swing structures may overlap with other use zones, a distance of 9' is required between the equipment. It appears the distance between swing structures at Grove Park do not meet this 9' requirement.
- Bolts may not extend more than two threads beyond the nut (as seen below the decks).
- Broken container curbs present tripping hazards.

Curtiss Field:

- The double zip slide's chute exit region must be at least 11 inches long horizontally and the vertical distance between the end of the slide and the safety surface shall not exceed 11 inches.
- The horizontal overhead ladder requires a horizontal distance of 8-10 inches from the platform out to the first handhold. It appears the first handhold measures less than 8 inches horizontally from the platform below.
- Many entrapment concerns are present in the images. Instances where the vertical or angled climbers reach the platform and coincide with the platform barriers or guardrails are targets for pinch points and entrapments.
- Deck wear and tear has exposed some hardware which presents protrusion concerns.
- Belt and tot seats may not share the same swing bay. No more than two seats may occupy a swing bay either. The swing structure at Curtiss Field neglects both requirements.
- There is no wheelchair access to the play equipment.



P.O. Box 27328 | Golden Valley, MN 55427  
1-800-622-5425 | 763-546-7787 | (F) 763-546-5050  
info@mnwisplay.com | www.mnwisplay.com

Community Park:

- Belt and tot seats may not share the same swing bay.
- The standing/sitting surface of a merry-go-round platform intended for 2-5 year olds should have a maximum height of 14" above the protective surface. The merry-go-round at the Community Park may exceed this distance.
- The 6' use zone to the sides of the swing structure appears inhibited on each side (container curbs and trees).
- Many entrapment concerns are present in the play structure.
- The upper access area through the guardrail or barrier should be 15 inches wide at most for all climbers. The sliding pole is a specific instance where this guideline is not followed.
- Two track rides next to each other should be at least 4 feet apart.
- Though a rubber path is present providing access to the play structure, the raised curb container may restrict this access.

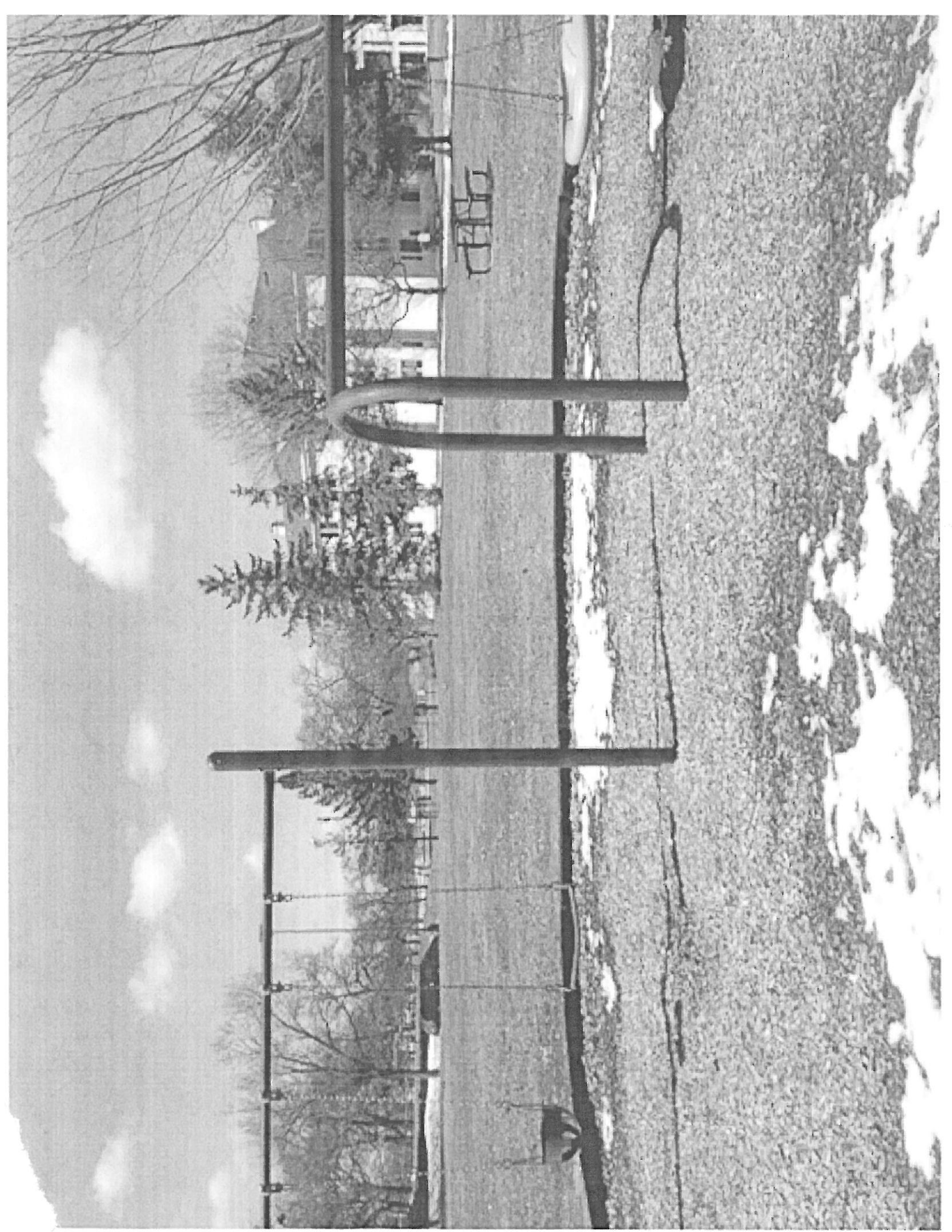


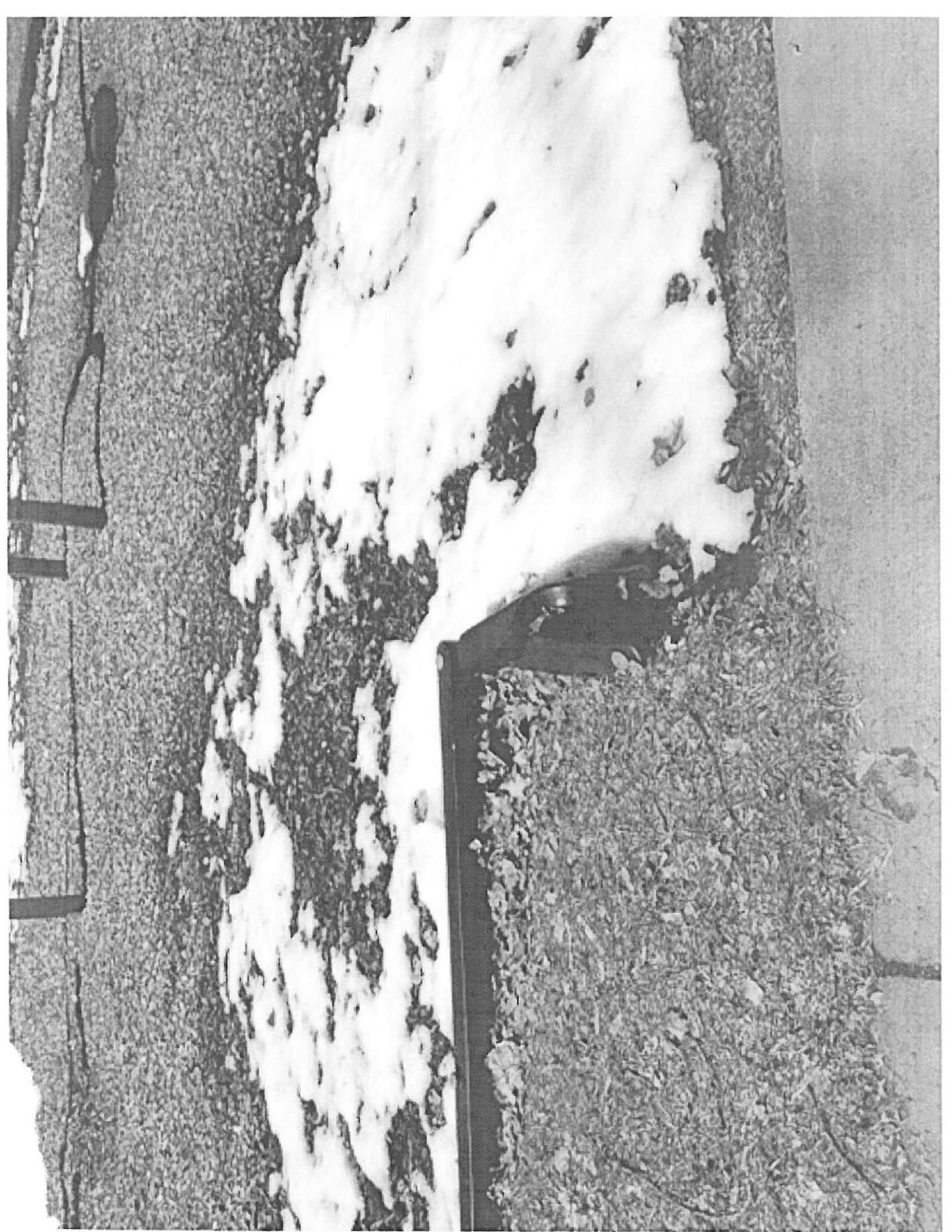
City of  
FALCON HEIGHTS

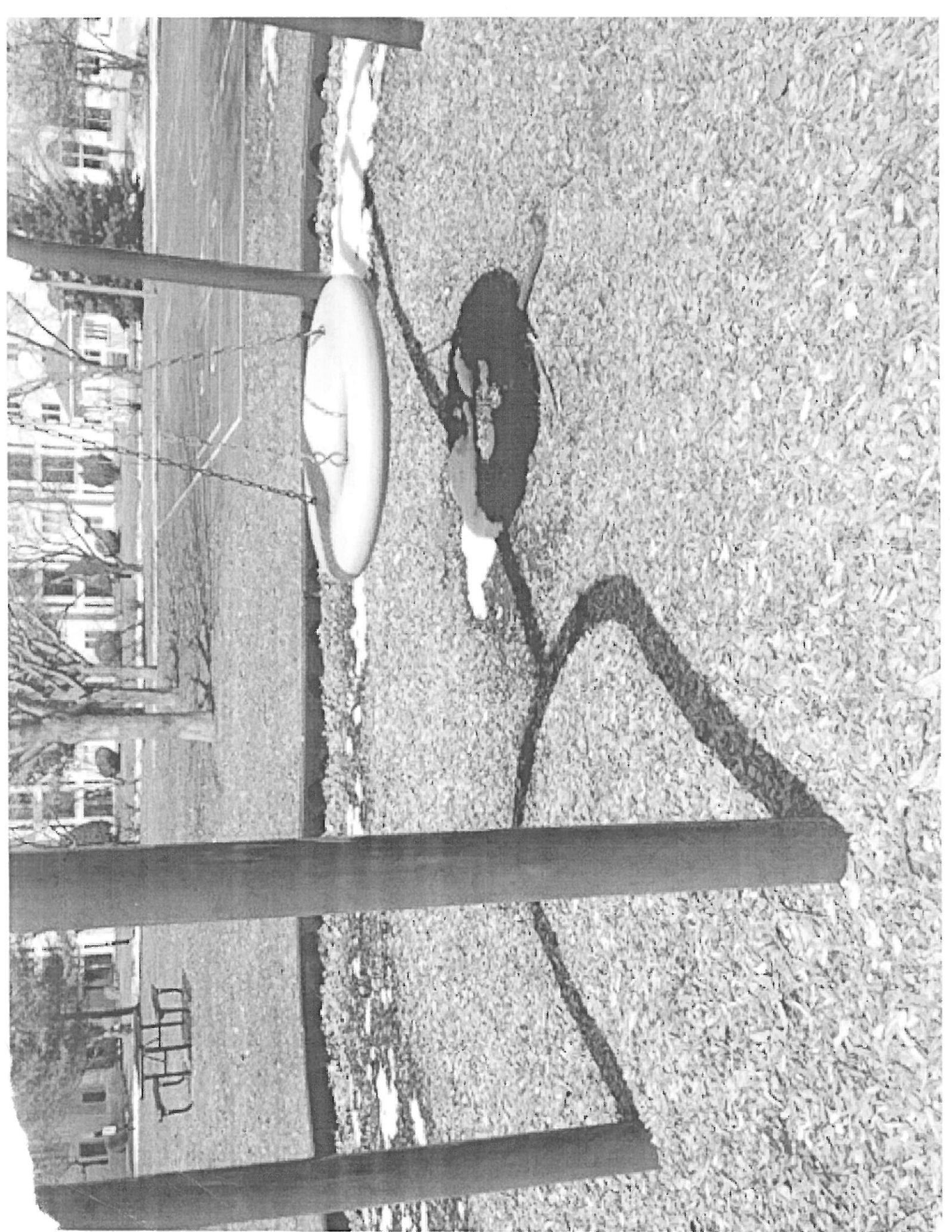
**Grove  
Park**





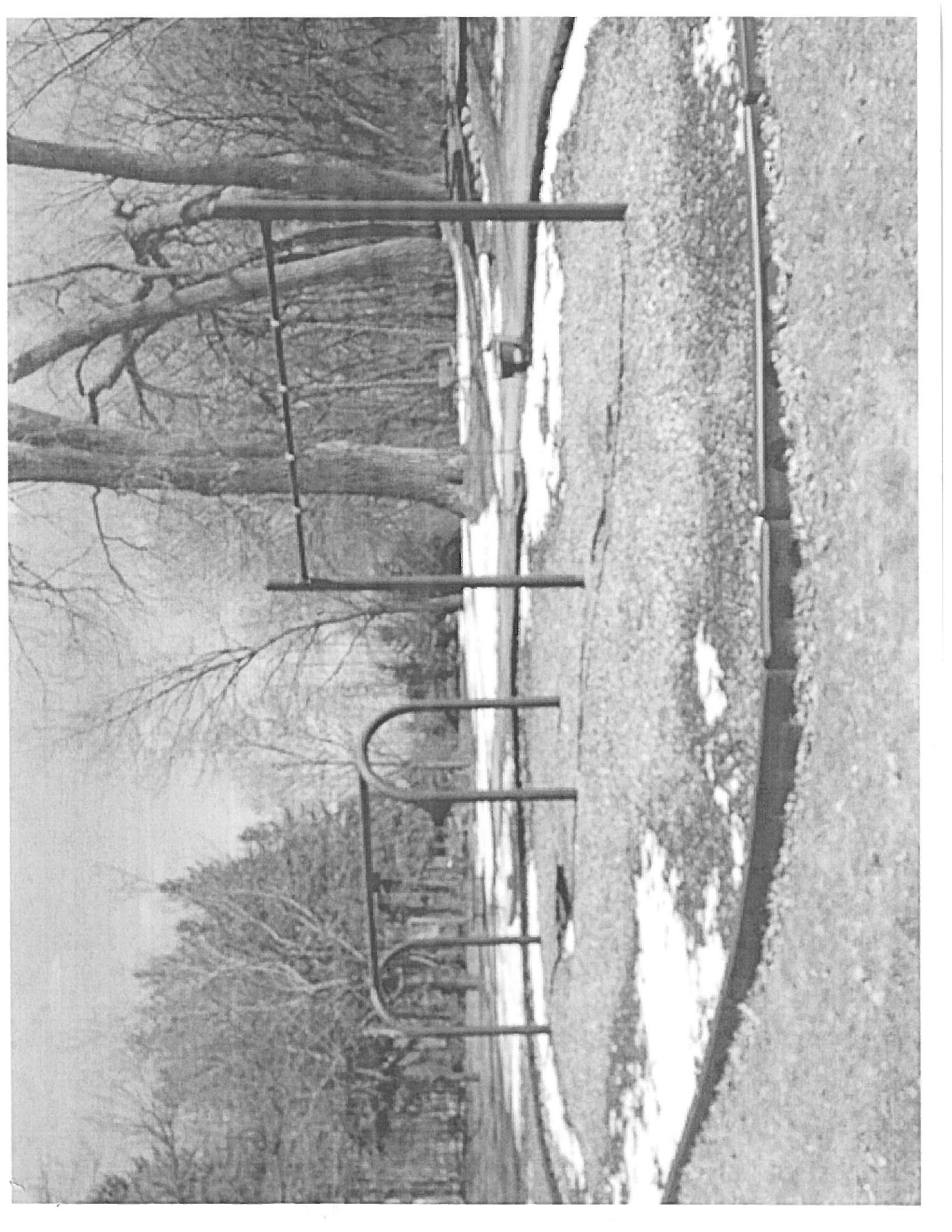


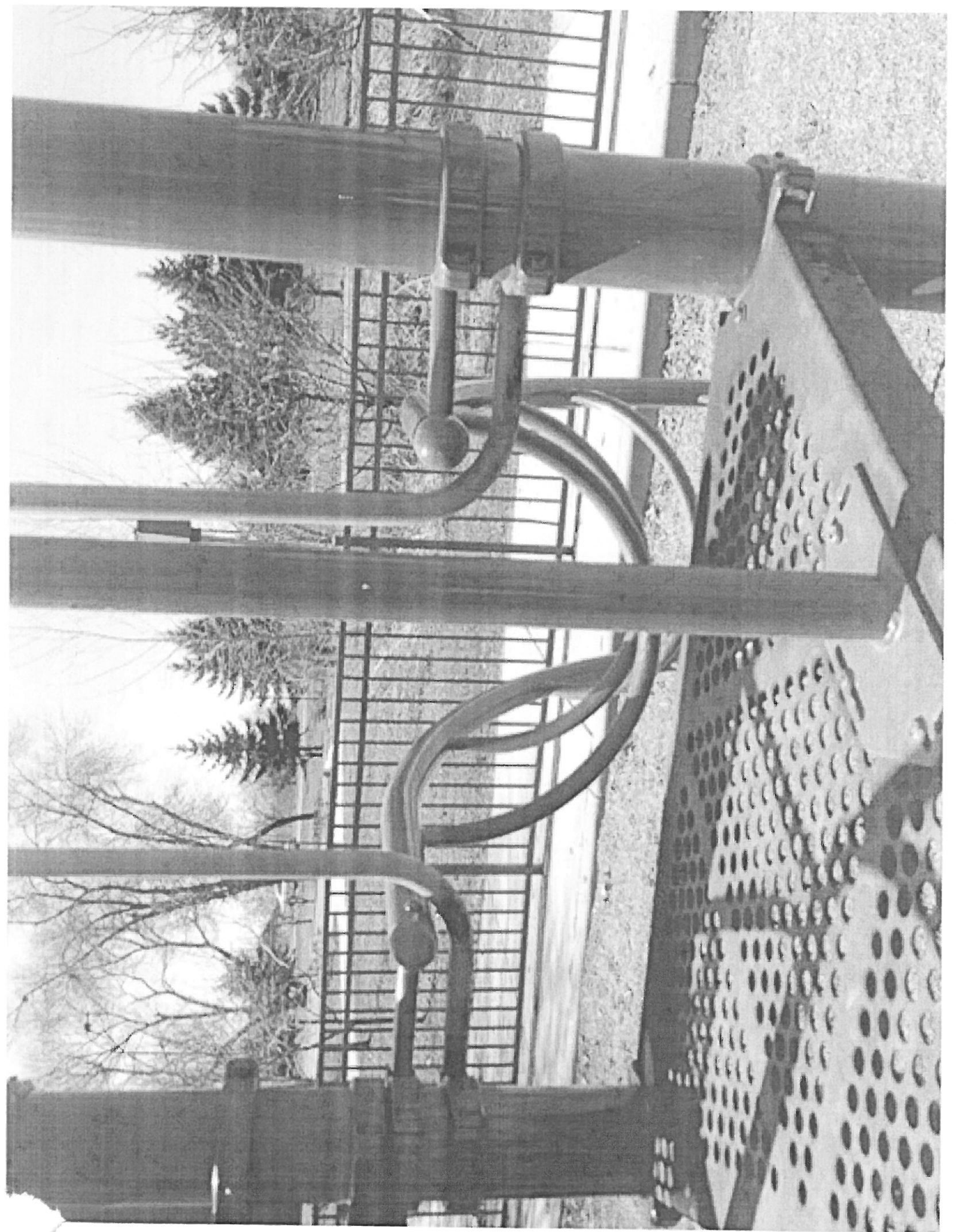


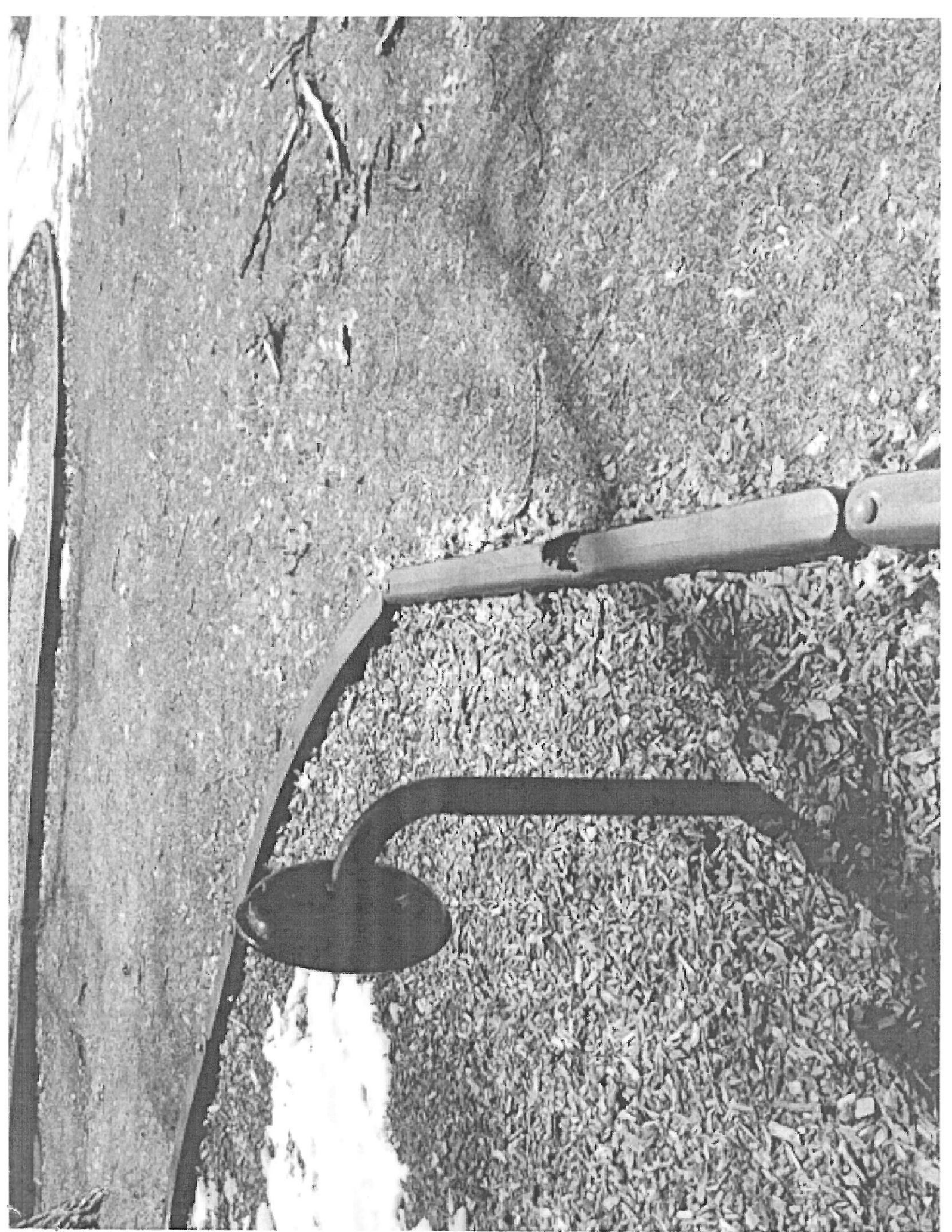








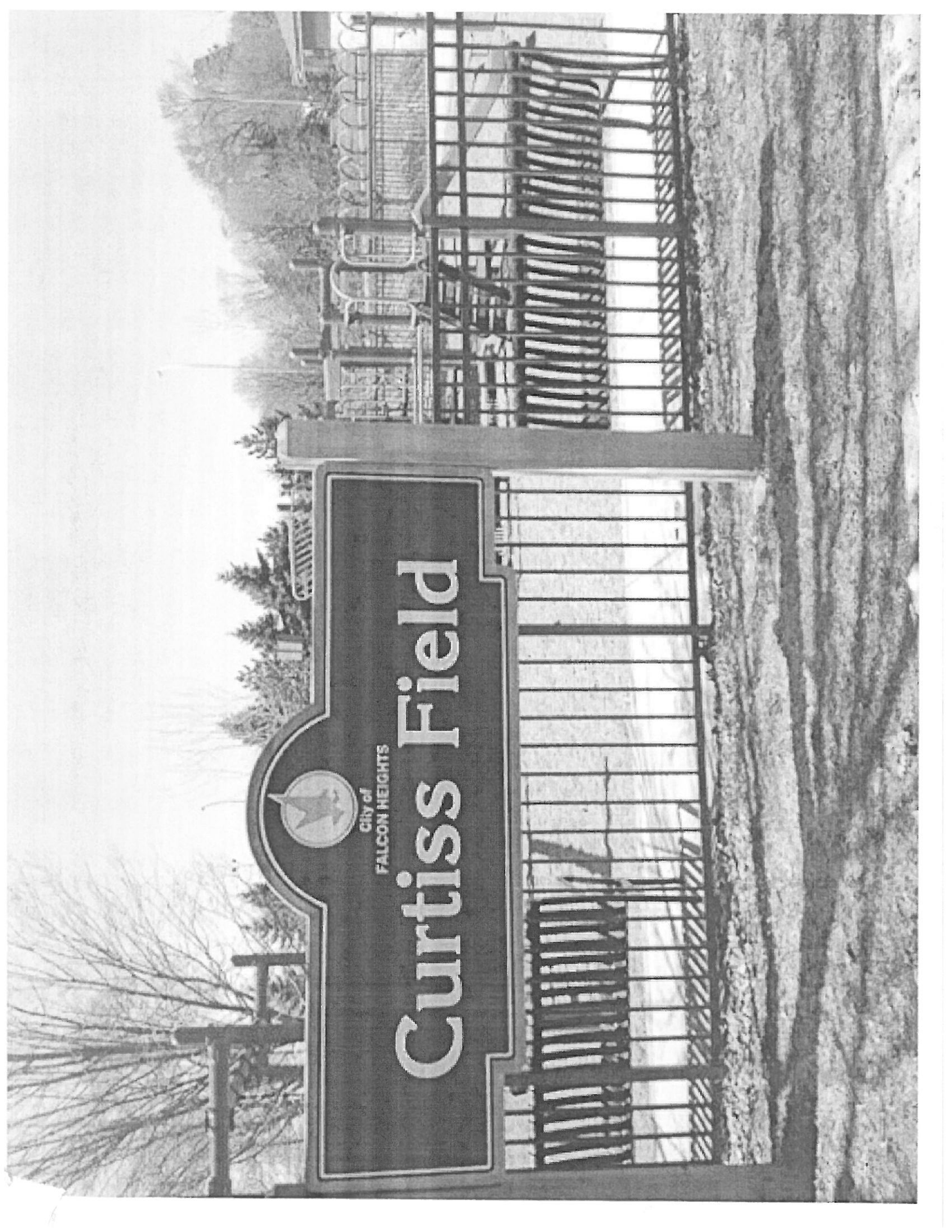


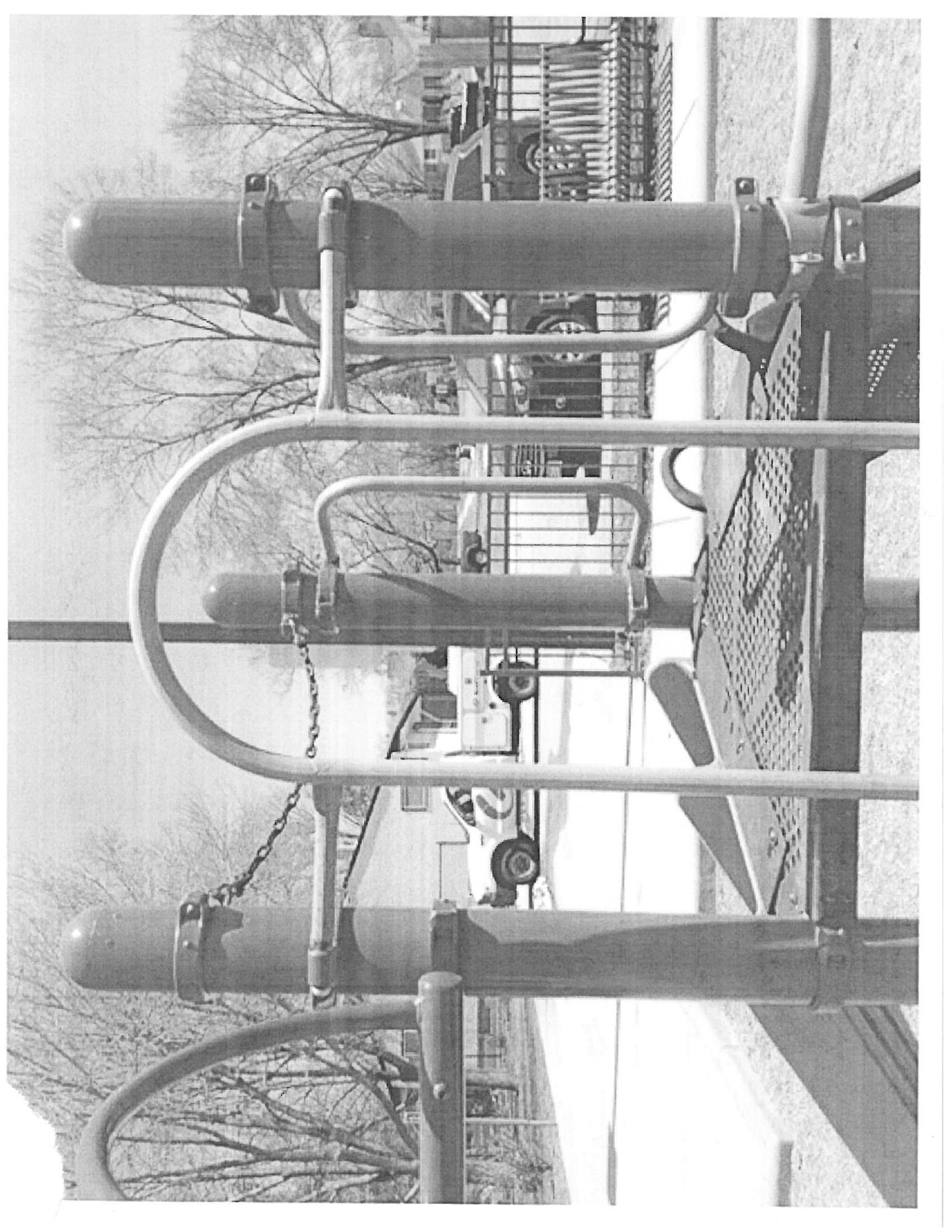


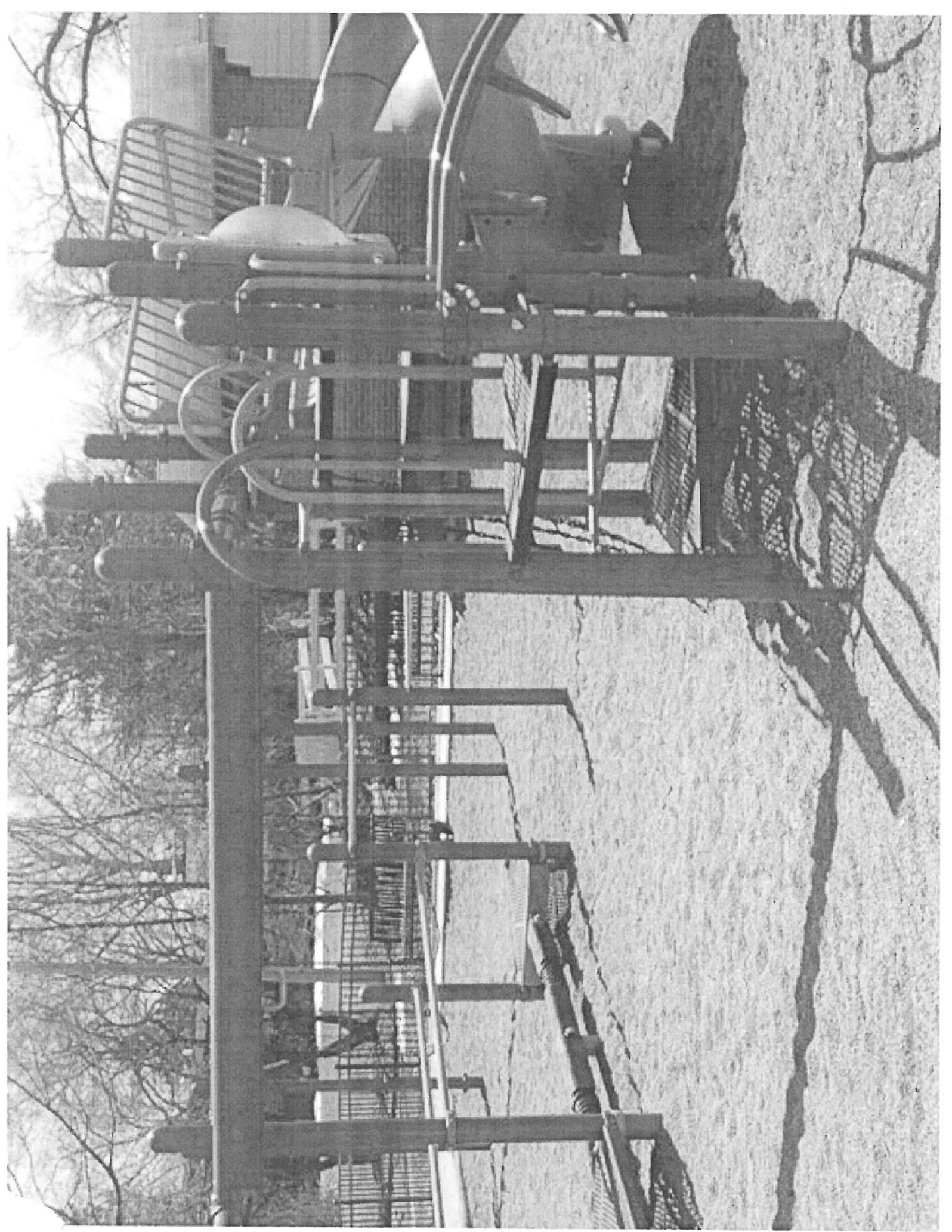


City of  
FALCON HEIGHTS

# Curtiss Field















City of  
FALCON HEIGHTS  
Community  
Park

FALCON HEIGHTS  
No  
Tobacco Use  
on This  
Park Property

