

CITY OF FALCON HEIGHTS
Regular Meeting of the City Council
City Hall
2077 West Larpenteur Avenue

MINUTES
March 12, 2014

- A. CALL TO ORDER: 7:00PM
- B. ROLL CALL: LINDSTROM _X_ HARRIS _X_ GOSLINE _X_
LONG _X_ MERCER-TAYLOR _X_
- STAFF PRESENT: FISCHER _X_
- C. PRESENTATIONS:
1.
- D. APPROVAL OF MINUTES: February 26, 2014 APPROVED
- E. PUBLIC HEARINGS:
- F. CONSENT AGENDA: Chuck Long Moved, Approval 5-0
1. General Disbursements through 3/7/2014: \$176,439.35
Payroll through 2/28/2014: \$15,756.66
2. Approval of City Licenses
3. Approve Payment #6 to T.A. Schifsky & Sons, Inc. for the 2013 Pavement
Management Project
4. Call for Public Hearing on Mounds Park Academy Project Conduit Financing Bonds
- G. POLICY ITEMS:
1. Bell Museum Letter and Resolution of Support
Beth Mercer-Taylor Moved, Approval 5-0
-Susan Weller, Steve Birke, and Tim McDevitt provided an update on the proposed Bell
Museum in Falcon Heights. They also answered questions from Council.
2. Garage Setback and Area Variances at 1403 Hoyt Avenue
Chuck Long Moved, Approval 5-0
-City Administrator Bart Fischer provided the staff report and answered questions from
Council. The applicant, Phil Behrens, provided additional information and answered
questions as well.
- H. INFORMATION/ ANNOUNCEMENTS:
Council Member Beth Mercer-Taylor
-Announced that the March 10th Environment Commission meeting was canceled.

Council Member Pam Harris

-Updated Council on the February 25th Planning Commission meeting.

Council Member Chuck Long

-Updated council on the February 10th Parks & Recreation Commission meeting and the draft Park Improvement Study that will be presented to Council at an upcoming meeting.

Council Member Keith Gosline

-Provided an update on the recent NYFS activities.

Mayor Peter Lindstrom

-Announced the upcoming presentation on March 24th from State Fair General Manager Jerry Hammer, to be held at Falcon Heights City Hall at 7pm.

-Announced that there are a few spots remaining for the upcoming growing season in the Falcon Heights Community Garden.

-Thanked Falcon Heights Public Works and St. Paul Regional Water Service crews for the recent water main break repairs.

I. COMMUNITY FORUM:

J. ADJOURNMENT: 7:51pm

Bell Museum of Natural History Museum and Planetarium



Why Minnesota Needs a New Museum and Planetarium

- The Bell plays a unique, statewide role in inspiring Minnesota students towards careers in science and technology with its invaluable collections and strong University connections.
- A flagship planetarium will strengthen Minnesota's statewide network of planetariums by creating and sharing new programs based on University research in astronomy and the life sciences.
- Historic Jacques dioramas and associated art collections (valued at over \$20 million) will be protected from the ravages of heat, humidity and insects.
- A new facility will build the state's reputation for innovative research and education focused on Minnesota's natural environments, supporting the exciting research occurring at our great University.

We have an historic opportunity to reimagine and combine two of Minnesota's beloved public institutions into a single facility that will house a new state natural history museum and planetarium. A revitalized Bell Museum and Planetarium will inspire generations of Minnesota students to embrace careers in the sciences, engineering and technology. It will make the Bell Museum an even stronger partner with schools in efforts to close the achievement gap and address anticipated workforce shortages in STEM-related fields.

Our project supports collaboration on STEM education programs with greater Minnesota planetarium partners at MnSCU sites

(Marshall, Moorhead and St. Cloud) and school districts across the State. Our formal education programs have served over 59,000 students and families in 92 of Minnesota's 134 legislative districts over the past two years. In partnership with the University of Minnesota's STEM education center, we will support educator professional development and lesson delivery through our technology-enhanced facility and classrooms.

This proposed facility is an investment in Minnesota's educational and cultural infrastructure, putting Minnesota on a better path to a stellar future.

Project:

- \$57.5 million to construct a new museum and 120-seat planetarium, seeking \$51.5 million in state bonding
- Located on the southwest corner of Larpenteur and Cleveland avenues on the UM St. Paul campus
- More than \$5 million in private and federal funds have resulted in nearly complete designs; we anticipate breaking ground in early 2015
- 12 acre site includes parking, co-location of Bee Research Lab, and five acres available for future development as outdoor science and nature observatory

BELL MUSEUM

OF NATURAL HISTORY

www.bellmuseum.org • (612) 626-9660 • 10 Church Street SE, Minneapolis, MN 55455

A NEW BELL MUSEUM AND PLANETARIUM WILL:

- inspire the next generation of STEM (Science, Technology, Engineering and Mathematics) workers needed by Minnesota businesses,
- better address Minnesota's achievement gap in STEM education by expanding University of Minnesota environmental, biological and astrophysical information and education for schools and families,
- create the flagship planetarium for Minnesota, with added capacity to create and provide educator training for new science programs based on University research in astronomy and the life sciences,
- enhance our museum programs that integrate science and art to educate, inform and inspire people of all ages,
- increase its statewide reach through expanded educational programs.



WHO WE ARE

Established by the Minnesota Legislature in 1872, the Bell Museum was created to "collect, skillfully prepare, and preserve for public inspection" specimens of the state's biological and geological resources. Today it is a statewide provider of educational programs, serving 92 of Minnesota's 134 House legislative districts over the past two years. The museum also operates the ExploraDome, an inflatable digital science theater that travels statewide.

Just as species evolve to thrive in changing environments, the Bell Museum continues to adapt. We are undergoing transformational change and recently embraced an expanded mission in astrophysics and planetary sciences. What has remained constant since 1872 is our University of Minnesota connection and commitment to serving the entire state.

Our evolving vision is centered on the principle that creativity and scientific literacy will flourish as people are inspired to ask about our place in the Universe. As a result, people will be moved to act and become teachers, researchers and community leaders in environmental issues.



EVOLVING BELL MUSEUM + PLANETARIUM

In 2011 the Minnesota Planetarium Society transferred its programs and assets to the Bell Museum, creating an integrated organization with even greater potential to address Minnesota's STEM education needs.




BELL MUSEUM
OF NATURAL HISTORY

www.bellmuseum.org • (612) 626-9660 • 10 Church Street SE, Minneapolis, MN 55455

Minnesota's Natural History Museum and Planetarium Capital Investment Project

Purpose – Strengthen K12 STEM education, esp. in environmental sciences

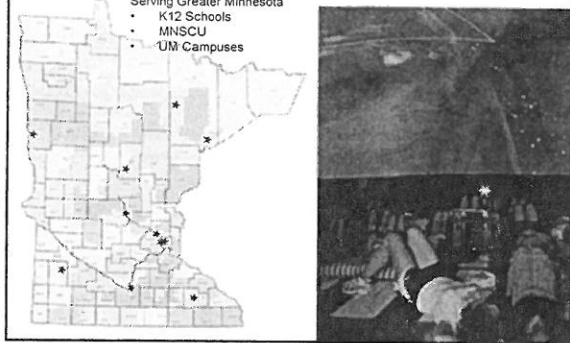


As Minnesota's state natural history museum, our mission is to discover, document and understand nature and promote informed stewardship of our world.

Sept. 2011 Minnesota Planetarium Society merges with Bell Museum, transferring ExploraDome portable planetarium technology and programming

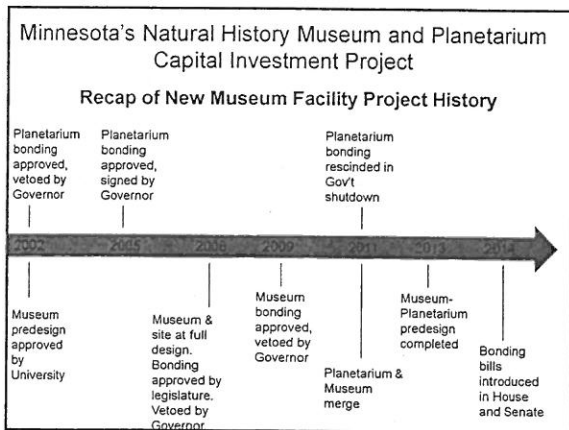
Serving Greater Minnesota

- K12 Schools
- MNSCU
- UM Campuses



Minnesota's Natural History Museum and Planetarium Capital Investment Project

Recap of New Museum Facility Project History

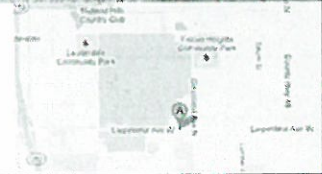


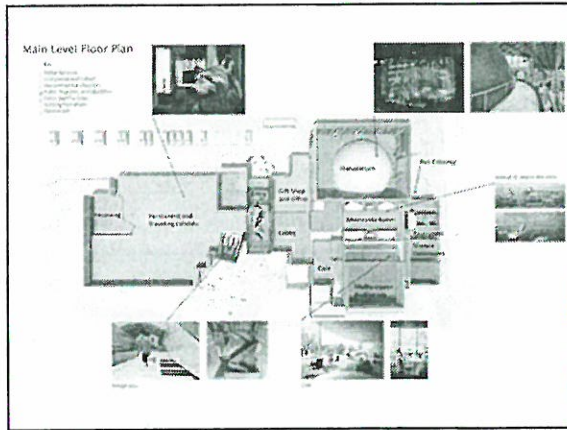
Year	Event
2002	Planetarium bonding approved, vetoed by Governor
2003	Museum predesign approved by University
2005	Planetarium bonding approved, signed by Governor
2005	Museum & site at full design. Bonding approved by legislature. Vetoed by Governor
2007	Museum bonding approved, vetoed by Governor
2011	Planetarium bonding rescinded in Gov't shutdown
2011	Planetarium & Museum merge
2013	Museum-Planetarium predesign completed
2014	Bonding bills introduced in House and Senate

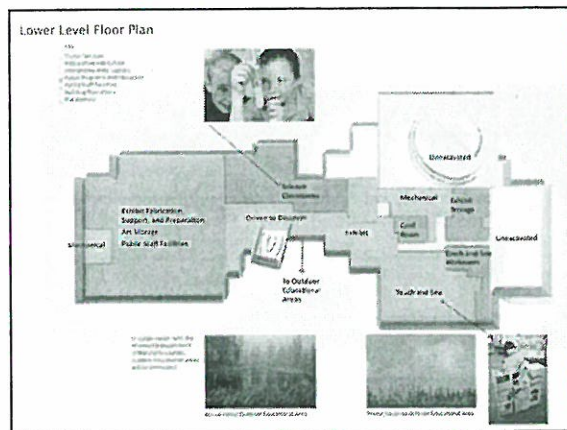
The Bell Museum of Natural History and Planetarium



A science and cultural gateway to St. Paul "Green" Campus





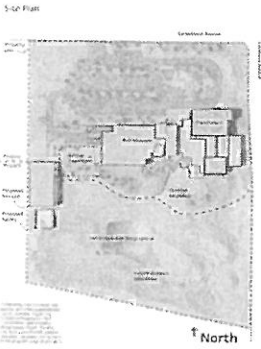


Project Synopsis:

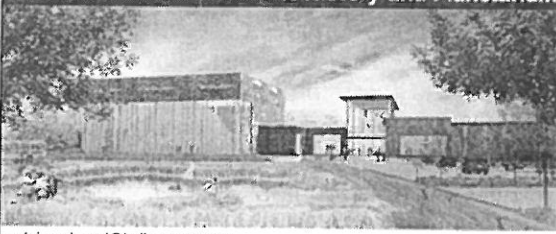
12 acre site

- Parking & bus loading
- Bee Research Lab
- Minnesota Biomes: Outdoor science and nature observatory

Planetarium pre-design is complete, reset of site and facility at full design (shovel ready)



The Bell Museum of Natural History and Planetarium



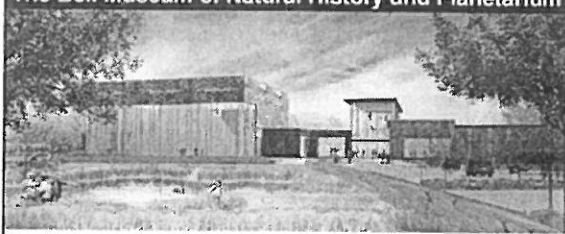
advisoryboard@bellmuseum.org

Steve Birke Advisory Board Chair	Lee Pfannmuller Co-Chair	Peter Leppik Co-chair
-------------------------------------	-----------------------------	--------------------------

Anticipated ground breaking in 2015.

\$57.5 million project, seeking \$51.5 million in state bonding.

The Bell Museum of Natural History and Planetarium



For more information, see:

Why Minnesota Needs a New Museum and Planetarium
Fact Sheet

advisoryboard@bellmuseum.org

PRESS RELEASE

Contact(s):

Steve Birke, Bell Museum Advisory Board Chair, s.birke@comcast.net, 952-215-5082;

Parke Kunkle, Planetarium program chair, parke.kunkle@minneapolis.net, 612-659-6068.

Bills Introduced to Construct a New Bell Museum and Planetarium

(March 5, 2014) – Minnesota would strengthen its investment in STEM education if legislation recently introduced results in funding for a new Bell Museum of Natural History and Planetarium.

“We applaud Representative Hausman’s and Senator Marty’s leadership and persistence in seeking funds for this project,” says Steve Birke, chair of the citizen’s advisory board for the Bell Museum and Planetarium. “Planning and fundraising have been underway for nearly 20 years, and the Twin Cities have gone without a large public planetarium for over a decade.” Over the years, more than \$5 million in donor and federal funds have been spent on facility and program design.

Funding for both the museum and the planetarium was approved by earlier state legislatures, at a total cost of over \$80 million for the then-separate projects. Now, as a combined project, planners are seeking \$51.5 million in state funds for the \$57.5 million project.

“The combined project saves over \$22 million,” Birke points out, “and it addresses the museum’s outdated and inflexible facility on the University of Minnesota’s East Bank.” The museum’s dioramas and art collection—valued at over \$20 million—are at risk due to the ravages of heat, humidity and insects.

- To meet the demand for services, the Bell Museum is now open seven-days-a-week. Yet, the facility’s inflexible layout and small size limit the audience it can accommodate. Over the past two years, the museum and planetarium have served over 100,000 visitors and students. “But larger school class sizes and our limited facility means the museum has to turn away school groups at certain times of the year,” Birke notes.

The new facility, with its planetarium and outdoor educational exhibits, would triple the organization’s capacity to serve school groups. Yet, the proposed building is only about 10,000 square feet larger than the current museum.

The extra capacity would bolster STEM (science, technology, engineering and math) education statewide,” says Parke Kunkle, the museum advisory board’s planetarium program chair. Planetariums located at MnSCU and school district sites around the state would benefit from the programming developed by the Bell Museum’s staff.

Representative Hausman believes that “Minnesotans have an historic opportunity to re-imaged and combine two of the state’s beloved public institutions, the natural history museum and planetarium, into a single facility that will continue to build our students’ technological creativity and scientific literacy.”

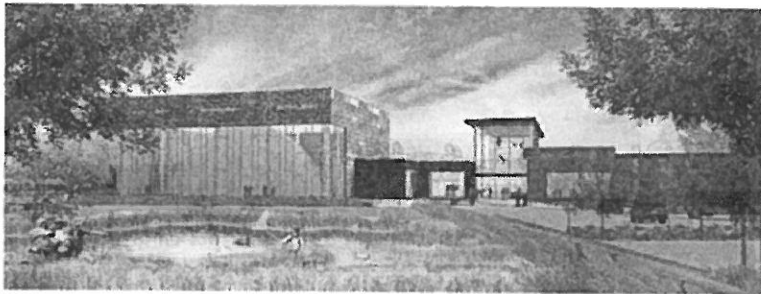
###

Bills to track:
HF2041 and HF2042
SF 1763 and SF 1764

Paul Douglas Weather Column

Meteorologist Paul Douglas writes about Minnesota weather daily, trying to go beyond the "highs" and "lows" of the weather story to discuss current trends and some of the how's and why's of meteorology. Rarely is our weather dull - every day is a new forecast challenge. Why is the weather doing what it's doing? Is climate change a real concern, and if so, how will my family be affected? Climate is flavoring all weather now, and I'll include links to timely stories that resonate with me.

Excerpt from Paul Douglas weather blog, featured online and at the Star Tribune web site for March 6, 2014:



Minnesota Deserves a State-Of-The-Art Planetarium and Natural History Museum. I'm a big believer in science education and science literacy - our kids and grandkids will need to be well-versed in science to succeed and maximize their potential in a very tech-savvy world. We lead the nation in the agricultural science, the arts, medical device technology and innovation, but the Twin Cities metro has yet to build a planetarium, and the Bell Museum of Natural History needs an overhaul and upgrade to remain competitive. Moving forward on a bonding request before the State Legislature and building a new planetarium and natural history museum would be a boon, not only to the University of Minnesota St. Paul Campus, but the Twin Cities and the entire state, serving kids and adults interested in science - making us even more competitive on the national and world stage. Learn more about the need, and the plans to move forward. A new Bell Museum and Planetarium will:

- better address Minnesota's achievement gap in STEM education.
- inspire the next generation of STEM workers needed by Minnesota businesses.
- expand University of Minnesota environmental, biological and astrophysical information and education for schools and families.
- create the flagship planetarium in Minnesota.
- increase its statewide reach by investing the increased revenues generated by a new facility to expand.

Dr. Mark Seeley is involved in the ongoing campaign to turn this vision into a reality. Here is an

excerpt of what he told me: *"I, like you, give a strong priority to do all I can to support science literacy among Minnesotans, and also to support all efforts to increase appreciation and awareness of our state's natural history. The new Bell Museum and Planetarium will provide far more opportunities to educate and engage students and citizens about science and about our natural history (including climate and weather). The planetarium will help us understand the universe we live it. These are investments that our needed to forge a path for the future where we can engage citizens on important issues of science and we can deploy new knowledge to better manage and preserve our natural resources."*

Tell your local legislator that our kids deserve a world-class planetarium and natural history museum.