

**City of Lino Lakes  
Environmental Board Meeting  
January 29, 2014  
6:30 p.m.**

**AGENDA**

1. Call to Order
2. Approval of Minutes  
December 18, 2013
3. Approval of Agenda
4. Open Mike
5. Action Items
  - A. NorthPointe Landscaping Plan
  - B. Talan Ridge
6. Discussion Items
  - A. Environmental Regulation Update/Mike Grochala
  - B. Power Point Slides and Pictures/Environmental Board Focus Areas
  - C. 2014 Meeting Dates
  - D. 2014 Goals
7. Adjourn

CITY OF LINO LAKES  
ENVIRONMENTAL BOARD MINUTES

DATE	: December 18, 2013
TIME STARTED	: 6:32 P. M.
TIME ENDED	: 8:16 P. M.
MEMBERS PRESENT	: Mary Jo O’Dea, Barbara Bor, Paula Andrzejewski, Martha DeHaven, Steve Heiskary, Nancie Klebba, Nancy Morin
MEMBERS ABSENT	: None
STAFF PRESENT	: Marty Asleson

**1. CALL TO ORDER**

Mrs. O’Dea called the Environmental Board meeting to order at 6:32 p.m. on December 18, 2013

**A. Recognition of Service and Presentation of Plaque to retiring board member Mary Jo O’Dea**

Mayor Reinert presented Chair Ms. O’Dea with a plaque honoring her for the years of service to the city.

Ms. O’Dea stated that it has been a pleasure to serve on the Environmental Board. She noted that she has enjoyed her time on the board and has been a great group of people to work with. Board members and staff thanked Ms. O’Dea and wished her well.

**2. APPROVAL OF MINUTES**

October 30, 2013 Meeting Minutes were approved with a few changes.

Ms. Bor made a motion to approve the October 30, 2013 Meeting Minutes. Ms. DeHaven seconded motion to approve the minutes. Motion carried unanimously.

**3. APPROVAL OF AGENDA**

Mr. Heiskary made a motion to approve the agenda. Ms. Morin seconded the motion to approve the agenda. Motion carried unanimously.

**4. OPEN MIKE**

Open mike closed at 6:38 p.m.

**5. ACTION ITEMS**

A. North Pointe

Mr. Asleson presented preliminary plat information for review on a proposed residential development. The property contains 93.3 acres and is currently zoned rural and is guided medium density residential. Larry Olson from AJE Companies was there to answer any questions.

Environmental Board has the following recommendations:

1. Proof should be given that wetlands in the vicinity will not be drained by opening up any sand seams, or a contingency plan to seal off wetland draining seams.
2. A letter from a company like Critical Connections, Inc., stating that it is not suitable Habitat would suffice.
3. Any fill will require approval of the RCWD including a mitigation plan.
4. Recommends a hydrologic restoration on this site be investigated for wetland mitigation credit.
5. A 50 foot buffer is required around all wetlands
6. A conservation easement must be placed over the wetlands and buffer area.
7. Signage identifying the location of the buffer location along all property lines must be installed.
8. A educational brochure should be developed
9. Recommends against the developer proposal of the action of removing 18 inches of wetland soil.
10. The road proposed on the south side of the development that dead-end under a “future road” scenario should be relocated so that it does not run into a wetland.
11. Tree Inventory plan must be revised in accordance to Section 3, Sub.4.Q.10-Tree Preservation and Mitigation.
12. Required to meet both water quality and volume regulation consistent with RCWD and City AUAR requirements. No net loss of floodplain for the site.
13. A management plan will be required
14. Consider water reuse to irrigate park and berm areas

15. A Letter of Map Revision (LOMR) will need to be obtained from the Federal Emergency Management Agency (FEMA) to verify the floodplain is not impacted by development.

16. Require surmountable curbing

17. Submit a SWPPP

18. The landscape buffer along 20<sup>th</sup> Avenue S must be revised in accordance to Section 3, Subd.4, Q.6 – Buffer and Screen Standards.

19. “Open Area” calculations shall be detailed in terms of area and number of plantings in accordance to Section 3, Subd.4, Q.5- Open Area Landscape Standards.

20. Money should be escrowed for all boulevard trees. The developer must design a section of the boulevard for the trees that is clear of utilities and sidewalk.

21. An appropriately sized (height) berm should be installed along the freeway on the East side to mitigate sound.

22. Revised landscape plans must be approved by staff and brought back to the Environmental Board for review.

23. Native vegetation seed mix should be used in all ponds.

24. The developer must supply one foot contours (if deemed necessary by the City Engineer) and drain tile mapping for the project as per AUAR requirements.

#### **4. DISCUSSION ITEMS**

##### **A. Environmental Board Power Point/Environmental Board Discussion**

Mr. Heiskary presented a power point frame work for the Environmental Board to work on. This is to inform the public what the Environmental Board is involved in such as Community Gardens, Recycling and Heron information. He stated that we can add information and pictures to this project. He said this is the springboard, let's get the basic done and we can go from there.

Ms. O'Dea said this is a good way for the public to see what the Environmental Board is about and educate people what the board does. She also stated that we should divide it up and everyone takes a project that interest them and add information. We can possibly add the information to a share site.

Ms. Bor stated she would like to work on the herons. Ms. DeHaven would like to work on gardens.

Ms. Morin will look into a share site and people can put pictures onto a CD and bring them to the next meeting.

Ms. Bor mentioned it would be nice to have the power point done by Earth Day which is April 26, 2014.

Ms. Bor suggested that at the January Board meeting we could include the Environmental Ordinance and also the power point updates to the agenda.

#### B. Goals 2014

The following are the proposed 2014 Environmental Goals with changes from the Board Members:

### **2014 Environmental Goals**

- Promote environmental stewardship with the citizens of Lino Lakes by communicating environmental initiatives in the city using various means of communication such as:
  - City Web Pages
  - Newsletter
    - Spring
    - Summer
    - Fall
    - Winter
  - Power Point Presentation
  - Earth Day
  - Arbor Day
  - Recycling Days
  - Partner with Anoka County Integrated Waste and the School District with a focus on recycling
- Participate in Blue Heron Days (August), providing public service educational material to the public if the opportunity presents itself
- Participate in Earth Day (April) activities in the community, promoting environmental awareness and collaboration with other environmental focused organizations.
- Communicate with our residents about conservation workshops offered in our area. Coordinate with RCWD outreach and education coordinator. Add a link to Anoka County RCWD.
- Monitor any activity in the AUAR as well as other proposed development areas, focusing on the values that Lino Lake's citizens have expressed in the vision for our city and the unique

ecological aspects of our wetlands, lakes and streams and subsurface waters. Apply mitigation plan as defined for that area. Be involved in any review/updates of the AUAR.

- Perform an evaluation of past Environmental Board recommendations for development projects. Review a sampling of a variety of projects by site visits, discussion with city staff, and landowners, neighbors, on the outcomes of the Board's recommendations. If necessary, submit a summary of significant findings resulting from the review in writing to the Community Development Director.
- Promote conservation development within the City incorporating the Open Space/Trail Plan and Handbook for Environmental Planning and Conservation Development within the scope of the new Resource Management Plan, and the RCWS rules. Review rule changes, SAMP documents and Surface Water Management Plan updates as they occur.
- To meet or exceed our City recycling goal of 50 (1819 tons) percent or greater of our Municipal solid waste. Find innovative ways to promote and encourage recycling as a city. Inventory city facilities for recycling and look into ways for school facilities to reduce waste and increase recycling. Apply for recycle grants.
- Maintain the Community Garden site and establish a preparatory gardening group. Work to get a sign for the garden. Continue to monitor the soil quality at the Community Garden site.
- Implement the Lino Lakes Preparedness Plan for EAB as needed.
- Work on Wollan's Park Wetland bank
- Continue to monitor the Heron rookery and water quality in the northern one third of Peltier Lake and to support the protection of resources in that area. Update Council on these matters
- Update Surface Water Management Plan.

NOW, THEREFORE, BE IT RESOLVED BY THE CITY COUNCIL OF THE CITY OF LINO LAKES, MINNESOTA:

1. That the 2014 goals of the Lino Lakes Environmental Board be adopted.

Adopted by the Lino Lakes City Council this \_\_ Day of \_\_\_\_\_, 2014

---

Jeff Reinert, Mayor

The motion for adoption of the foregoing resolution was duly seconded by Council Member \_\_\_\_\_ and upon vote being taken thereon, the following voted in favor thereof:

The following voted against same:

Whereupon said resolution was duly passed and adopted.

**CERTIFICATION**

I hereby certify that the above is a correct copy of a resolution duly passed, adopted and approved by the City Council on date.

\_\_\_\_\_

**7. ADJOURNMENT**

It was noted that the next meeting of the Environmental Board will be on Wednesday, January 29, 2014 at 6:30p.m.

Mr. Heiskary made a motion to adjourn the meeting at 8:16 p.m. Ms. DeHaven seconded the motion. Motion carried unanimously.

Respectfully submitted by  
Mary Fogarty  
Office Tech 1

**ENVIRONMENTAL BOARD  
AGENDA ITEM 5A**

**STAFF ORIGINATOR:** Marty Asleson, Environmental Coordinator

**MEETING DATE:** January 29, 2014

**PROJECT NAME:** NorthPointe

**REQUEST:** Landscape Plan Review

**APPLICANT:** AJE Companies  
Attn Larry Olson  
1875 Station Parkway NW  
Andover, MN 55304

---

**PROPOSED DEVELOPMENT**

The Northpointe Development proposal was reviewed and commented on at the December 18, 2013 Environmental Board Meeting. At that time the Landscape Plan was incomplete. The purpose of this item is to review the NorthPointe Landscape Plan

Tree Preservation and New Tree Requirements

The Developer Submitted a Tree Inventory with tree removals indicated. The plan had to be revised in accordance to Section 3, Sub.4.Q.10-Tree Preservation and Mitigation Standards which requires identification of “Environmentally Sensitive Areas” and “Basic Use Areas.” The Developer has done that and submitted tree mitigation numbers.

There were 188 replacement trees required. The developer is proposing to provide 264 replacement trees.

There are 245 boulevard trees required. The developer is proposing to provide for 245 boulevard trees. The City will plant all boulevard trees. The developer must escrow enough money to provide for those trees over the period of development.

Landscape Plan

There is screening requirements along 20<sup>th</sup> Avenue. The developer is proposing to plant 104 Black Hills Spruce along 20<sup>th</sup> Ave. The Black Hills Spruce are appropriate. The developer is also proposing to plant 21 canopy trees, and another 12 ornamental trees under the wires along 20<sup>th</sup> Ave. The canopy trees are Oaks and River Birch. All species are appropriate. It is not evident from the plan where the ornamental trees are located.



The only ornamental tree in the plant palette is Malus Red Jewel". This is a zone hardy tree with persistent fruit, that only gets about 15 feet tall. This would categorize it as an under utility wire tree, however; permission should be obtained from the overhead utility to plant trees in their utility easement area.

Freeman Maples should be eliminated from the planting pallets. Red maples can be substituted for these trees.

Planting of rhizome and stolen producing trees, such as Aspen and other Poplars, in the wetland and pond conservation areas creates future maintenance problems for management. These types of trees produce new trees by rhizomes and stolen production. Staff recommends that Poplars planted in the pond and wetland areas be replaced with oaks.

Mitigating freeway sound pollution is an AUAR issue (AUAR item 21.8), identified for the site. The developer is required to prepare a noise study to determine what, if any mitigation is required.

A City approved native vegetation seed mix should be used in all ponds, water treatment/filtration areas, and other surface water management areas. This is an AUAR mitigation requirement.

No plantings should occur in access areas to storm ponds.

Scotch Pine and Austrian Pine are included in the planting palette. Red or White Pines should be substituted for these trees because of pine bark beetle killing issues in this area. If pines are used along the freeway, However, Austrian Pine will be the only pine that could tolerate salt spray issues.

Catalpa is in the plant palette for buffer and open space areas. Catalpas have done poorly in Lino lakes (marginally hardy). Another species such as Kentucky Coffee Tree or Ginkgo should be substituted for the Catalpas.

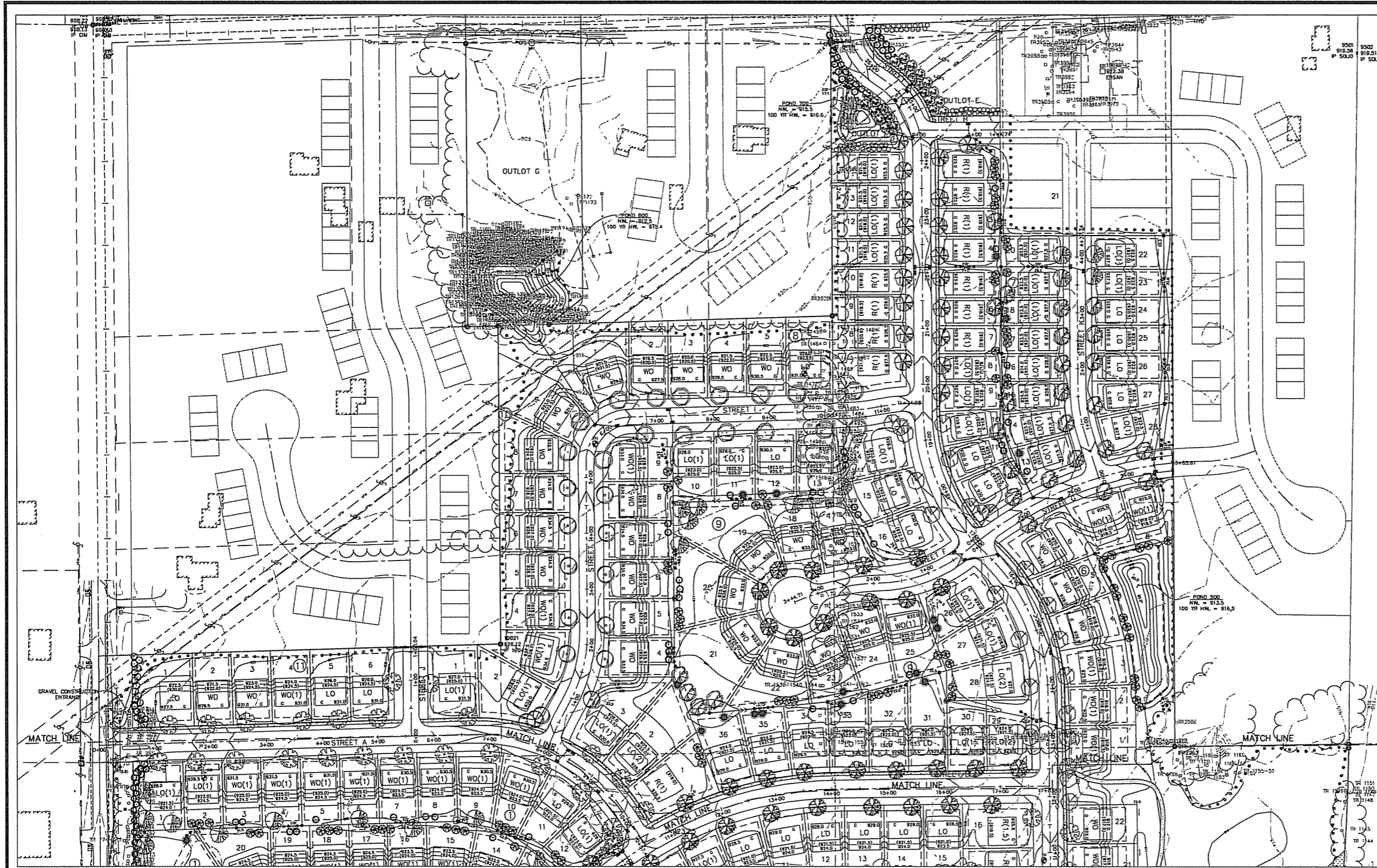
## **RECOMMENDATION**

1. Developer Escrow money to cover boulevard tree plantings
2. In any case where plant materials are proposed to be planted in utility easements, permission should be obtained from utility companies.
3. Eliminate Freeman Maples from any proposed trees on public easement or outlot/open space areas. Substitute Red Maples for the Freeman Maples.
4. Eliminate Poplar species from planting areas in pond and wetland areas. Substitute Oaks for these areas.

5. No plantings should occur in access areas to ponds and wetland areas.
6. Eliminate Scotch and Austrian Pines from the Planting Plan. Substitute Red or White Pines for these areas.
7. Eliminate Catalpa from the Planting Plan and Substitute another species such as Kentucky Coffee Tree or Ginkgo.

## **ATTACHMENTS**

1. Northpointe Landscape Sheets



SEE SHEET L4 FOR PLANT SCHEDULE & CALCULATIONS

BLVD TREES TO BE INSTALLED BY BUILDER @ TIME OF HOME CONSTRUCTION

**NOTES**

LANDSCAPE WORK TO BE COMPLETED AFTER FINISH GRADING IS COMPLETED BY OTHERS.  
 LANDSCAPE CONTRACTOR WILL VISIT THE SITE BEFORE SUBMITTING A BID TO FULLY UNDERSTAND SITE CONDITIONS.

ALL PLANTS AND MATERIALS SHALL COMPLY WITH THE LATEST EDITION OF THE AMERICAN STANDARD FOR NURSERY STOCK, AMERICAN ASSOCIATION OF NURSERYMEN.

ALL TREE TRUNKS SHALL BE SURROUNDED BY A MINIMUM OF 2 FOOT RADIUS WITH 3" THICK SHREDDED HARDWOOD MULCH.

ALL PLANTS WILL BE GUARANTEED FOR FULL REPLACEMENT A MINIMUM OF AT LEAST TWO FULL GROWING SEASONS (600 DAYS) AFTER INSTALLATION ON SITE.

IF THE CONTRACTOR FEELS THERE MAY BE AN ERROR, HE/SHE IS REQUIRED TO CONTACT THE LANDSCAPE ARCHITECT.

PLANT SYMBOLS SHOWN ARE FOR LOCATING THE POSITIONS FOR PLANTING. SIZES SHOWN DO NOT NECESSARILY REFLECT THE TRUE PLANT SIZE EITHER AT TIME OF INSTALLATION OR WHEN FULL GROWN.

LANDSCAPE CONTRACTOR WILL REPAIR ALL DAMAGE TO PROPERTY FROM INSTALLATION ACTIVITIES AT NO ADDITION EXPENSE TO THE PROPERTY OWNER.

BEFORE PLANTING TREES AT STREET, DRIVEWAYS SHOULD BE ADJUSTED SO TREES ARE NO CLOSER THAN 6' FROM DRIVEWAY SURFACE

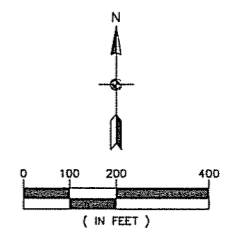
**ADDITIONAL PLANTING NOTES**

1. SCARIFY BOTTOM AND SIDES OF HOLE PRIOR TO PLANTING
2. TRIM OUT DEAD WOOD AND WEAK AND/OR DEFORMED TWIGS. DO NOT CUT A LEADER. DO NOT PAINT CUTS.
3. SET PLANT ON UNDISTURBED NATIVE SOIL OR THOROUGHLY COMPACTED BACKFILL SOIL. INSTALL PLANT SO THE ROOT FLARE IS AT OR UP TO 2" ABOVE THE FINISHED GRADE.
4. PLACE PLANT IN PLANTING HOLE WITH BURLAP AND WIRE BASKET, (IF USED), INTACT. BACKFILL WITH APPROXIMATELY 12" OF THE TOP OF ROOTBALL, WATER PLANT. REMOVE TOP 1/3 OF THE BASKET OR THE TOP TWO HORIZONTAL RINGS, WHICHEVER IS GREATER. REMOVE ALL BURLAP AND NAILS FROM TOP
5. 1/3 OF THE BALL. REMOVE ALL TWINE.
6. PLUMB AND BACKFILL WITH BACKFILL SOIL.
7. WATER TO SETTLE PLANTS AND FILL VOIDS.
8. WATER WITHIN TWO HOURS OF INSTALLATION. WATERING MUST BE SUFFICIENT TO THOROUGHLY SATURATE ROOT BALL AND PLANTING HOLE.
9. PLACE MULCH WITHIN 48 HOURS OF THE SECOND WATERING UNLESS SOIL MOISTURE IS EXCESSIVE.

KEY	BOTANICAL NAME	COMMON NAME	SIZE	ROOT	QTY.
<b>DECIDUOUS TREES</b>					
	Populus tremuloides	QUAKING ASPEN	#10	CONT.	-
	Quercus bicolor	SWAMP WHITE OAK	2.5"	BB	-
	Quercus rubra	NORTHERN RED OAK	2.5"	BB	-
	Tilia americana	AMERICAN LINDEN	2.5"	BB	-
	Betula nigra	RIVER BIRCH	2.5"	BB	-

<b>LANDSCAPE LEGEND</b>					
<b>CONIFEROUS TREES</b>					
	Picea glauca densata	BLACK HILLS SPRUCE	6'	HT.	-
	Pinus nigra	AUSTRIAN PINE	6'	HT.	-
	Pinus sylvestris	SCOTCH PINE	6'	HT.	-
<b>ORNAMENTAL TREES</b>					
	Malus 'Red Jewel'	RED JEWEL CRAB	2"	BB	-
<b>SHRUBS</b>					
	Viburnum lentago	NANNYBERRY VIBURNUM	#5	CONT.	-
	Cornus sericea 'Cardinal'	CARDINAL DOGWOOD	#5	CONT.	-

**LANDMATTERS LLC**  
 Landscape Architecture  
 Place Making  
 phone 612.598.5706



**Carlson McCain**  
 ENVIRONMENTAL • ENGINEERING • SURVEYING  
 248 Apollo Dr, Suite 100, Lino Lakes, MN 55014  
 Phone: 763-489-7900 Fax: 763-489-7959

**PLANTING PLAN NORTH**  
**NORTHPOINTE**  
 Lino Lakes, Minnesota

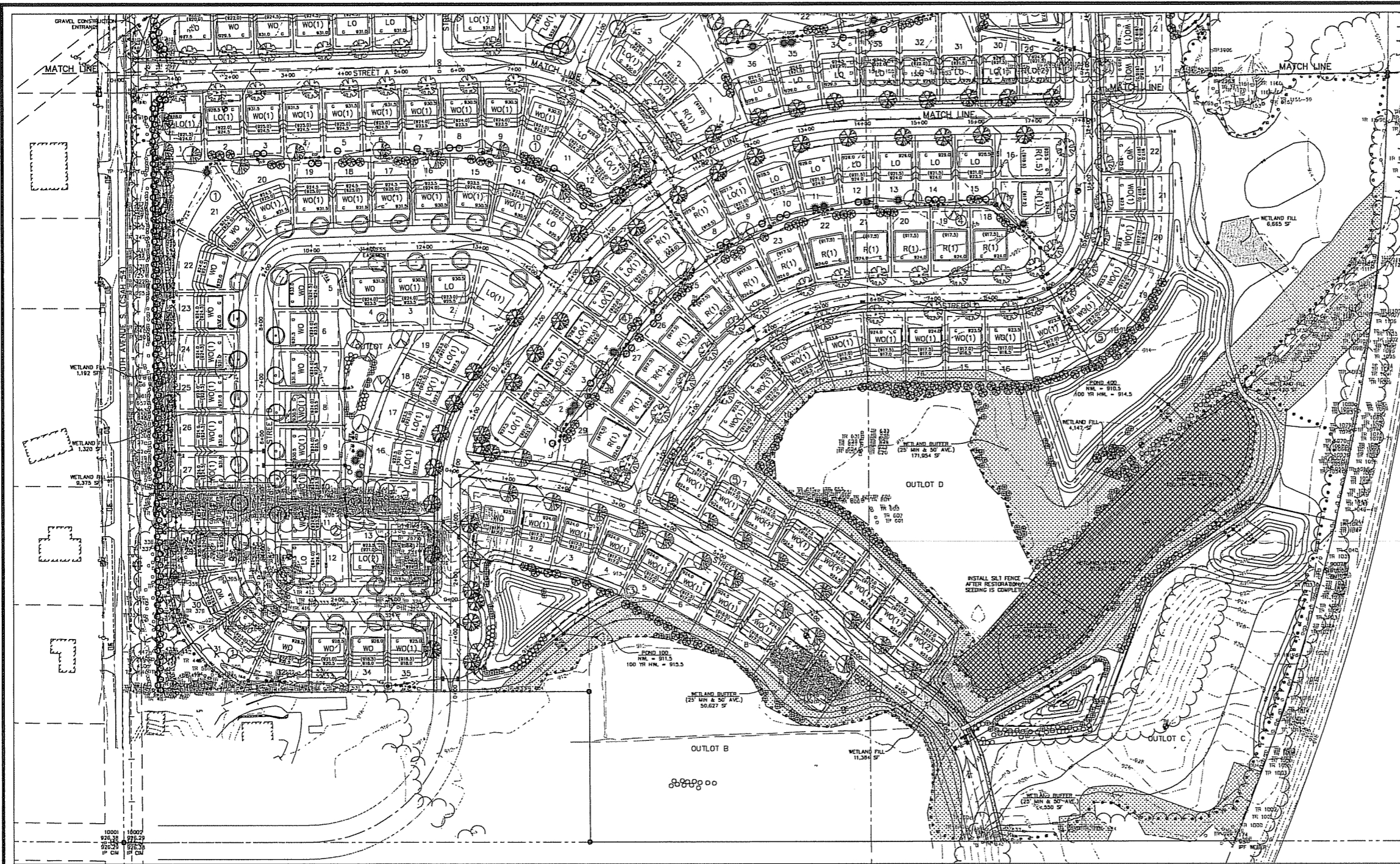
**AJE COMPANIES**  
 1875 Station Parkway NW  
 Andover, MN 55304

REVISIONS	
1.	1/13/14 Per City Comments
2.	
3.	
4.	
5.	
6.	

DRAWN BY: KO  
 DESIGNED BY: KO  
 ISSUE DATE: 11/8/13

I hereby certify that this plan, specification or report was prepared by me or under my direct supervision and that I am a duly Licensed Landscape Architect under the laws of the State of Minnesota

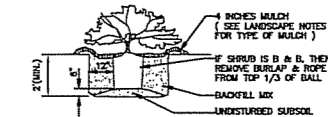
Name: Kathleen O'Connell  
 Signature: \_\_\_\_\_  
 Date: 11/8/13 License #: 20862



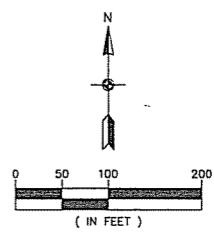
SEE SHEET L4 FOR PLANT SCHEDULE & CALCULATIONS

BLVD TREES TO BE INSTALLED BY BUILDER @ TIME OF HOME CONSTRUCTION

**LANDMATTERS LLC**  
Landscape Architecture  
Place Making  
phone 612.598.5706

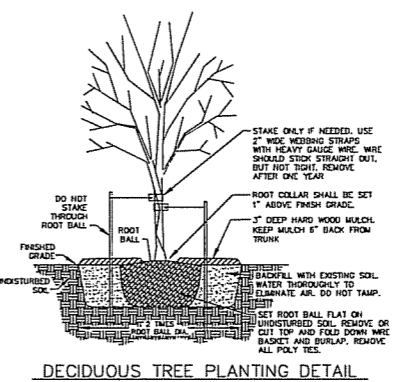


# SHRUB & CONTAINER PLANTING DETAIL  
NOT TO SCALE

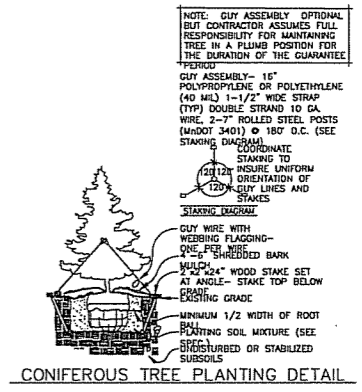


KEY	BOTANICAL NAME	COMMON NAME	SIZE	ROOT	QTY.
<b>DECIDUOUS TREES</b>					
	Populus tremuloides	QUAKING ASPEN	#10	CONT.	-
	Quercus bicolor	SWAMP WHITE OAK	2.5"	BB	-
	Quercus rubro	NORTHERN RED OAK	2.5"	BB	-
	Tilia americana	AMERICAN LINDEN	2.5"	BB	-
	Betula nigra	RIVER BIRCH	2.5"	BB	-

<b>LANDSCAPE LEGEND</b>					
<b>CONIFEROUS TREES</b>					
	Picea glauca densata	BLACK HILLS SPRUCE	6'	HT.	-
	Pinus nigra	AUSTRIAN PINE	6'	HT.	-
	Pinus sylvestris	SCOTCH PINE	6'	HT.	-
<b>ORNAMENTAL TREES</b>					
	Malus 'Red Jewel'	RED JEWEL CRAB	2"	BB	-
<b>SHRUBS</b>					
	Viburnum lentago	NANNYBERRY VIBURNUM	#5	CONT.	-
	Cornus sericea 'Cardinal'	CARDINAL DOGWOOD	#5	CONT.	-



DECIDUOUS TREE PLANTING DETAIL



CONIFEROUS TREE PLANTING DETAIL

**Carlson McCain**  
ENVIRONMENTAL • ENGINEERING • SURVEYING  
248 Apollo Dr, Suite 100, Lino Lakes, MN 55014  
Phone: 763-489-7900 Fax: 763-489-7959

**PLANTING PLAN SOUTH**  
**NORTHPOINTE**  
Lino Lakes, Minnesota

**AJE COMPANIES**  
1875 Station Parkway NW  
Andover, MN 55304

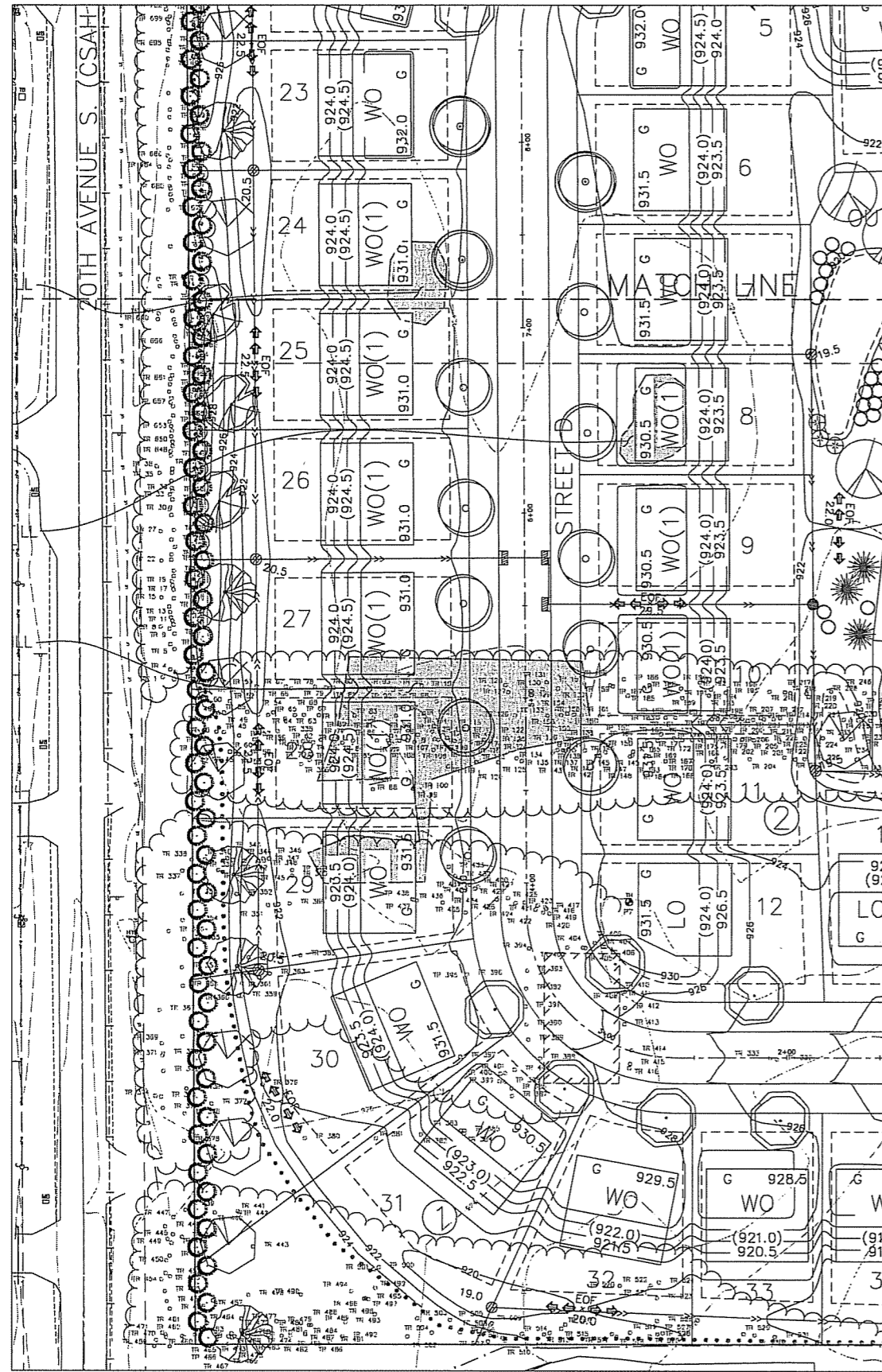
**REVISIONS**

1.	1/13/14	Per City Comments
2.		
3.		
4.		
5.		
6.		

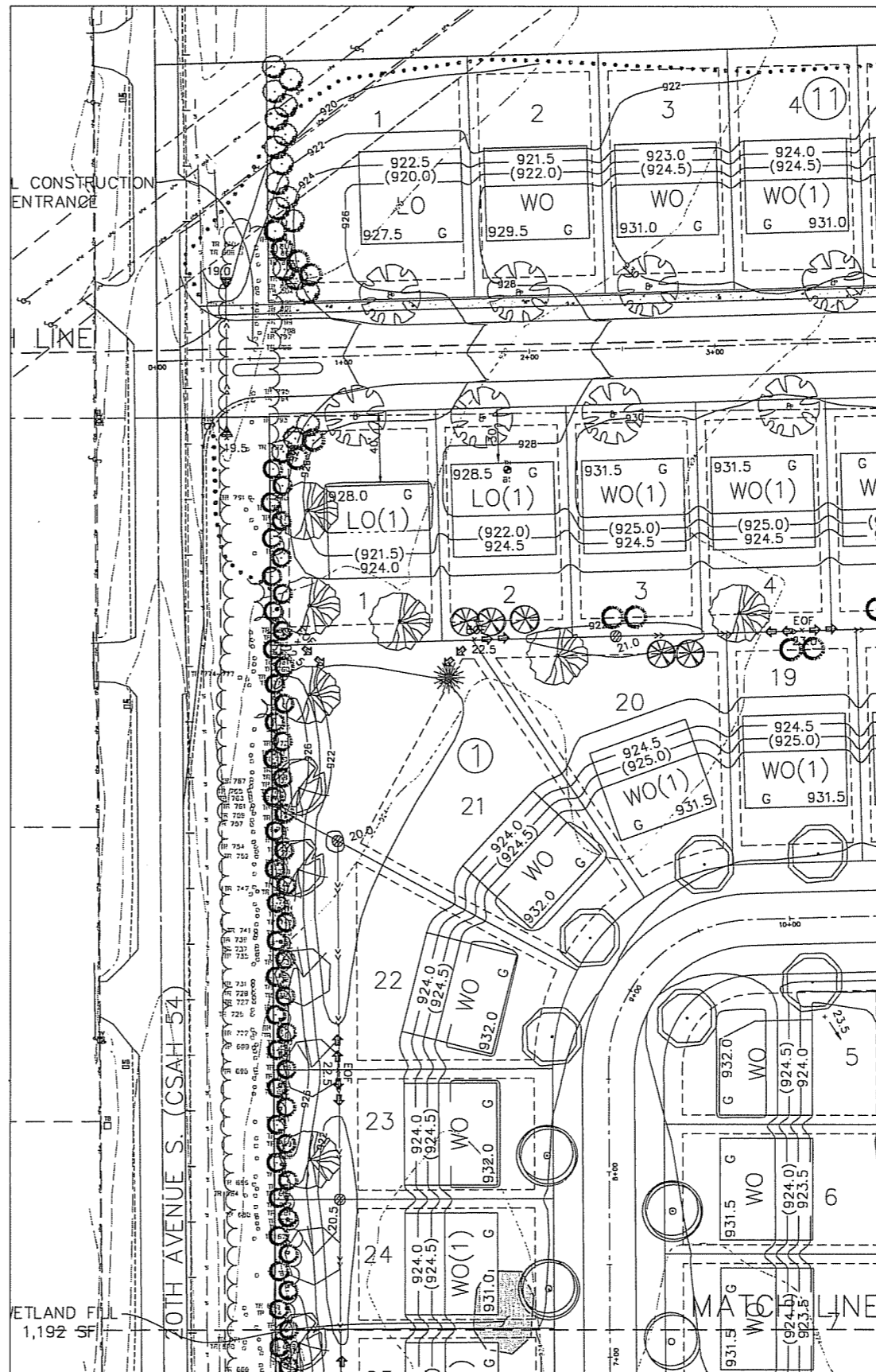
I hereby certify that this plan, specification or report was prepared by me or under my direct supervision and that I am a duly Licensed Landscape Architect under the laws of the State of Minnesota.

Name: Kathleen O'Connell  
Signature: \_\_\_\_\_  
Date: 11/8/13 License #: 20862



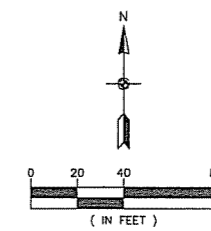


BUFFER TREES ENLARGEMENT SOUTH



BUFFER TREES ENLARGEMENT SOUTH

SEE SHEET L4 FOR PLANT SCHEDULE & CALCULATIONS



**LANDMATTERS LLC**  
 Landscape Architecture  
 Place Making  
 phone 612.598.5706



**Carlson  
McCain**  
 ENVIRONMENTAL • ENGINEERING • SURVEYING

248 Apollo Dr, Suite 100, Lino Lakes, MN 55014  
 Phone: 763-489-7900 Fax: 763-489-7959

**AJE COMPANIES**  
 1875 Station Parkway NW  
 Andover, MN 55304

REVISIONS

1.	1/13/14 Per City Comments
2.	
3.	
4.	
5.	
6.	

DRAWN BY: KO  
 DESIGNED BY: KO  
 ISSUE DATE: 11/18/13

I hereby certify that this plan, specification or report was prepared by me or under my direct supervision and that I am a duly Licensed Landscape Architect under the laws of the State of Minnesota

Name: Kathleen O'Connell  
 Signature: \_\_\_\_\_  
 Date: 11/18/13 License #: 20862

PLANT SCHEDULE FOR BOULEVARD TREES

LANDSCAPE LEGEND						LANDSCAPE LEGEND							
KEY	BOTANICAL NAME	COMMON NAME	SIZE	ROOT	QTY.	REMARKS	KEY	BOTANICAL NAME	COMMON NAME	SIZE	ROOT	QTY.	REMARKS
DECIDUOUS TREES													
	Acer saccharum 'Bailest'	FALL FIESTA SUGAR MAPLE	2.5"	BB	47			Populus tremuloides	QUAKING ASPEN	#10	CONT	-	
	Acer rubrum 'Northwood'	NORTHWOOD MAPLE	2.5"	BB	18			Quercus bicolor	SWAMP WHITE OAK	2.5"	BB	17	
	Acer rubrum 'Franksred'	RED SUNSET MAPLE	2.5"	BB	15			Quercus rubra	NORTHERN RED OAK	2.5"	BB	24	
	Celtis occidentalis	HACKBERRY	2.5"	BB	55			Tilia americana	AMERICAN LINDEN	2.5"	BB	42	
	Catalpa speciosa	CATALPA	2.5"	BB	26			Betula nigra	RIVER BIRCH	2.5"	BB	-	

BUFFER / SCREEN LANDSCAPE REQUIREMENTS

BUFFER TREES ALONG 20TH AVE. = 104 BLACK HILLS SPRUCE  
 CANOPY TREES ALONG 20TH AVE. EVERY 50' = 21 LARGE CANOPY TREES  
 ORNAMENTAL TREES ALONG 20TH AVE. UNDER POWER LINE = 12 LARGE ORNAMENTAL TREES

PLANT SCHEDULE FOR BUFFERS & OPEN AREAS

LANDSCAPE LEGEND						LANDSCAPE LEGEND						LANDSCAPE LEGEND									
KEY	BOTANICAL NAME	COMMON NAME	SIZE	ROOT	QTY.	REMARKS	KEY	BOTANICAL NAME	COMMON NAME	SIZE	ROOT	QTY.	REMARKS	KEY	BOTANICAL NAME	COMMON NAME	SIZE	ROOT	QTY.	REMARKS	
DECIDUOUS TREES																					
	Acer saccharum 'Bailest'	FALL FIESTA SUGAR MAPLE	2.5"	BB	12			Populus tremuloides	QUAKING ASPEN	#10	CONT	98			Picea glauca densata	BLACK HILLS SPRUCE	6'	HT.	129		
	Acer X freemanii 'AF#1'	FIREFALL MAPLE	2.5"	BB	2			Quercus bicolor	SWAMP WHITE OAK	2.5"	BB	5			Pinus nigra	AUSTRIAN PINE	6'	HT.	3		
	Acer X freemanii 'Sienna'	SIENNA GLEN MAPLE	2.5"	BB	16			Quercus rubra	NORTHERN RED OAK	2.5"	BB	-			Pinus sylvestris	SCOTCH PINE	6'	HT.	-		
	Celtis occidentalis	HACKBERRY	2.5"	BB	-			Tilia americana	AMERICAN LINDEN	2.5"	BB	-		ORNAMENTAL TREES							
	Catalpa speciosa	CATALPA	2.5"	BB	-			Betula nigra	RIVER BIRCH	2.5"	BB	-			Malus 'PRAIRIE FIRE'	PRAIRIE FIRE CRAB	2"	BB	37		
SHRUBS																					
	Viburnum lentago	NANNYBERRY VIBURNUM	#5	CONT.	319																
	Cornus sericea 'Cardinal'	CARDINAL DOGWOOD	#5	CONT.	93																

PLANTING NOTES

- ALL PLANTS MUST BE HEALTHY, VIGOROUS MATERIAL, FREE OF PESTS AND DISEASE AND BE CONTAINER GROWN OR BALLED AND BURLAPPED AS INDICATED IN THE LANDSCAPE LEGEND.
- ALL TREES MUST BE STRAIGHT TRUNKED AND FULL HEADED AND MEET ALL REQUIREMENTS SPECIFIED.
- THE LANDSCAPE ARCHITECT RESERVES THE RIGHT TO REJECT ANY PLANTS WHICH ARE DEEMED UNSATISFACTORY BEFORE, DURING, OR AFTER INSTALLATION.
- NO SUBSTITUTIONS OF PLANT MATERIAL SHALL BE ACCEPTED UNLESS APPROVED IN WRITING BY THE LANDSCAPE ARCHITECT.
- ALL PLANTING STOCK SHALL CONFORM TO THE "AMERICAN STANDARD FOR NURSERY STOCK," ANSI-Z60, LATEST EDITION, OF THE AMERICAN ASSOCIATION OF NURSERMEN, INC. AND SHALL CONSTITUTE MINIMUM QUALITY REQUIREMENTS FOR PLANT MATERIALS.
- EXISTING TREES AND SHRUBS TO REMAIN SHALL BE PROTECTED TO THE DRIP LINE FROM ALL CONSTRUCTION TRAFFIC, STORAGE OF MATERIALS ETC. WITH 4" HT. ORANGE PLASTIC SAFETY FENCING ADEQUATELY SUPPORTED BY STEEL FENCE POSTS 6" O.C. MAXIMUM SPACING.
- ALL PLANT MATERIAL QUANTITIES, SHAPES OF BEDS AND LOCATIONS SHOWN ARE APPROXIMATE. CONTRACTOR SHALL BE RESPONSIBLE FOR COMPLETE COVERAGE OF ALL PLANTING BEDS AT SPACING SHOWN AND ADJUSTED TO CONFORM TO THE EXACT CONDITIONS OF THE SITE. THE LANDSCAPE ARCHITECT SHALL APPROVE THE STAKING LOCATION OF ALL PLANT MATERIALS PRIOR TO INSTALLATION.
- ALL TREES MUST BE PLANTED, MULCHED, AND STAKED AS SHOWN IN THE DETAILS.
- ALL PLANTING AREAS MUST BE COMPLETELY MULCHED AS SPECIFIED. SHREDDED HARDWOOD MULCH, CLEAN AND FREE OF NOXIOUS WEEDS OR OTHER DELETERIOUS MATERIAL, IN ALL MASS PLANTING BEDS AND FOR TREES, UNLESS INDICATED AS ROCK MULCH ON DRAWINGS. SUBMIT SAMPLE TO LANDSCAPE ARCHITECT PRIOR TO DELIVERY ON-SITE FOR APPROVAL. DELIVER MULCH ON DAY OF INSTALLATION. USE 4" FOR TREES, SHRUB BEDS, AND 3" FOR PERENNIAL/GROUND COVER BEDS, UNLESS OTHERWISE DIRECTED.
- THE PLAN TAKES PRECEDENCE OVER THE LANDSCAPE LEGEND IF DISCREPANCIES EXIST. THE SPECIFICATIONS TAKE PRECEDENCE OVER THE PLANTING NOTES AND GENERAL NOTES.
- THE CONTRACTOR SHALL BE RESPONSIBLE FOR ALL MULCHES AND PLANTING SOIL QUANTITIES TO COMPLETE THE WORK SHOWN ON THE PLAN. VERIFY ALL QUANTITIES SHOWN ON THE LANDSCAPE LEGEND.
- LONG-TERM STORAGE OF MATERIALS OR SUPPLIES ON-SITE WILL NOT BE ALLOWED.
- THE CONTRACTOR SHALL KEEP PAVEMENTS, PLANTERS AND BUILDINGS CLEAN AND UNSTAINED. ALL PEDESTRIAN AND VEHICLE ACCESS TO BE MAINTAINED THROUGHOUT CONSTRUCTION PERIOD. ALL WASTES SHALL BE PROMPTLY REMOVED FROM THE SITE. ANY PLANT STOCK NOT PLANTED ON DAY OF DELIVERY SHALL BE HELD IN AND WATERED UNTIL INSTALLATION. PLANTS NOT MAINTAINED IN THIS MANNER WILL BE REJECTED. ANY DAMAGE TO EXISTING FACILITIES SHALL BE REPAIRED AT THE CONTRACTOR'S EXPENSE.
- THE CONTRACTOR SHALL BE RESPONSIBLE FOR COMPLYING WITH ALL APPLICABLE CODES, REGULATIONS, AND PERMITS GOVERNING THE WORK.
- LOCATE AND VERIFY ALL UTILITIES, INCLUDING IRRIGATION LINES, WITH THE OWNER FOR PROPRIETARY UTILITIES AND Gopher STATE ONE CALL AT 454-0002 (TWIN CITIES METRO AREA) OR 800-252-1166 (GREATER MINNESOTA) 48 HOURS BEFORE DIGGING. CONTRACTOR SHALL BE RESPONSIBLE FOR THE PROTECTION AND REPAIR OF ANY DAMAGES TO SAME. NOTIFY THE LANDSCAPE ARCHITECT OF ANY CONFLICTS TO FACILITATE PLANT RELOCATION.
- USE ANTI-DESICCANT (MILTRUF OR APPROVED EQUAL) ON DECIDUOUS PLANTS MOVED IN LEAF AND FOR EVERGREENS MOVED ANYTIME. APPLY AS PER MANUFACTURER'S INSTRUCTION. ALL EVERGREENS SHALL BE SPRAYED IN THE LATE FALL FOR WINTER PROTECTION DURING WARRANTY PERIOD.
- PLANTING SOIL FOR TREES, SHRUBS AND GROUND COVERS: FERTILE FRAGILE LOAM CONTAINING A LIBERAL AMOUNT OF HUMUS AND CAPABLE OF SUSTAINING VIGOROUS PLANT GROWTH. IT SHALL COMPLY WITH UN/DOT SPECIFICATION 3077 TYPE B SELECT TOPSOIL. MIXTURE SHALL BE FREE FROM HARDPACK, SUBSOL, STONES, CHEMICALS, NOXIOUS WEEDS, ETC. SOIL MIXTURE SHALL HAVE A PH BETWEEN 6.1 AND 7.0 AND 10-10-10 FERTILIZER AT THE RATE OF 3 POUNDS PER CUBIC YARD. IN PLANTING BEDS INCORPORATE THIS MIXTURE THROUGHOUT THE ENTIRE BED BY ROTOTILLING IT INTO THE TOP 12" OF SOIL.
- ALL PLANTS SHALL BE GUARANTEED FOR ONE COMPLETE GROWING SEASON (APRIL 1 - NOVEMBER 1), UNLESS OTHERWISE SPECIFIED. THE GUARANTEE SHALL COVER THE FULL COST OF REPLACEMENT INCLUDING LABOR AND PLANTS.
- CONTRACTOR SHALL NOTIFY THE LANDSCAPE ARCHITECT AT LEAST 3 DAYS PRIOR TO PLANNED DELIVERY. THE CONTRACTOR SHALL NOTIFY THE LANDSCAPE ARCHITECT AT LEAST 24 HOURS IN ADVANCE OF BEGINNING PLANT INSTALLATION.
- SEASONS/TIME OF PLANTING: NOTE: THE CONTRACTOR MAY ELECT TO PLANT IN OFF-SEASONS ENTIRELY AT HIS/HER RISK. DECIDUOUS POTTED PLANTS: APRIL 1-JUNE 1; AUG. 21-NOV. 1. EVERGREEN POTTED PLANTS: APRIL 1-JUNE 1; AUG. 21-OCT. 1. EVERGREEN BALS: APRIL 1-MAY 15; AUG. 21-SEPT. 15.
- MAINTENANCE SHALL BEGIN IMMEDIATELY AFTER EACH PORTION OF THE WORK IS IN PLACE. PLANT MATERIAL SHALL BE PROTECTED AND MAINTAINED UNTIL THE INSTALLATION OF THE PLANTS IS COMPLETE. INSPECTION HAS BEEN MADE, AND PLANTINGS ARE ACCEPTED EXCLUSIVE OF THE GUARANTEE. MAINTENANCE SHALL INCLUDE WATERING, CULTIVATING, MULCHING, REMOVAL OF DEAD MATERIALS, RE-SETTING PLANTS TO PROPER GRADE AND KEEPING PLANTS IN A PLUMB POSITION. AFTER ACCEPTANCE, THE OWNER SHALL ASSUME MAINTENANCE RESPONSIBILITIES. HOWEVER, THE CONTRACTOR SHALL CONTINUE TO BE RESPONSIBLE FOR KEEPING THE TREES PLUMB THROUGHOUT THE GUARANTEE PERIOD.
- ANY PLANT MATERIAL WHICH DIES, TURNS BROWN, OR DEFOLIATES (PRIOR TO TOTAL ACCEPTANCE OF THE WORK) SHALL BE PROMPTLY REMOVED FROM THE SITE AND REPLACED WITH MATERIAL OF THE SAME SPECIES, QUANTITY, AND SIZE AND MEETING ALL LANDSCAPE LEGEND SPECIFICATIONS.
- WATERING: MAINTAIN A WATERING SCHEDULE WHICH WILL THOROUGHLY WATER ALL PLANTS ONCE A WEEK, IN EXTREMELY HOT, DRY WEATHER, WATER MORE OFTEN AS REQUIRED BY INDICATIONS OF HEAT STRESS SUCH AS WILTING LEAVES. CHECK MOISTURE UNDER MULCH PRIOR TO WATERING TO DETERMINE NEEDS. CONTRACTOR SHALL MAKE THE NECESSARY ARRANGEMENTS FOR WATER.
- CONTRACTOR SHALL REQUEST IN WRITING, A FINAL ACCEPTANCE INSPECTION.
- SEE SHEET 2.01 FOR PROPOSED IRRIGATION SYSTEM.
- ALL DISTURBED AREAS TO BE SEEDED, AER TO RECEIVE 4" TOP SOIL, SEED, MULCH, AND WATER UNTIL A HEALTHY STAND OF GRASS IS OBTAINED.

PLANT SCHEDULE FOR REPLACEMENT TREES

LANDSCAPE LEGEND						LANDSCAPE LEGEND							
KEY	BOTANICAL NAME	COMMON NAME	SIZE	ROOT	QTY.	REMARKS	KEY	BOTANICAL NAME	COMMON NAME	SIZE	ROOT	QTY.	REMARKS
DECIDUOUS TREES													
	Acer saccharum 'Bailest'	FALL FIESTA SUGAR MAPLE	2.5"	BB	2			Populus tremuloides	QUAKING ASPEN	#5	CONT	106	
	Acer X freemanii 'AF#1'	FIREFALL MAPLE	2.5"	BB	-			Quercus bicolor	SWAMP WHITE OAK	2.5"	BB	15	
	Acer X freemanii 'Sienna'	SIENNA GLEN MAPLE	2.5"	BB	12			Quercus rubra	NORTHERN RED OAK	2.5"	BB	21	
	Celtis occidentalis	HACKBERRY	2.5"	BB	2			Tilia americana	AMERICAN LINDEN	2.5"	BB	-	
	Catalpa speciosa	CATALPA	2.5"	BB	1			Betula nigra	RIVER BIRCH	2.5"	BB	14	

REPLACEMENT TREE REQUIREMENTS

REPLACEMENT TREES REQUIRED = 188.25  
 REPLACEMENT TREES PROVIDED = 264

LANDSCAPE LEGEND						
KEY	BOTANICAL NAME	COMMON NAME	SIZE	ROOT	QTY.	REMARKS
CONIFEROUS TREES						
	Picea glauca densata	BLACK HILLS SPRUCE	6'	HT.	79	
	Pinus nigra	AUSTRIAN PINE	6'	HT.	12	
	Pinus sylvestris	SCOTCH PINE	6'	HT.	-	
ORNAMENTAL TREES						
	Malus 'PRAIRIE FIRE'	PRAIRIE FIRE CRAB	2"	BB	-	
SHRUBS						
	Viburnum lentago	NANNYBERRY VIBURNUM	#5	CONT.	-	
	Cornus sericea 'Cardinal'	CARDINAL DOGWOOD	#5	CONT.	-	

BOULEVARD TREE REQ

1 BLVD TREE PER LOT FRONTAGE = 245  
 OPEN AREA LANDSCAPE REQ.

OUTLOT A = 18,580 SF/2000 = 9.3 X 1 TREE = 9 LG TREES  
 OUTLOT A = 18,580 SF/2000 = 9.3 X 3 SHRUBS = 28 LG SHRUBS

OUTLOT B = 242,132 SF; -20,100 SF BELOW NWL; -169,012 WETLAND = 53,020 SF  
 OUTLOT B = 53,020 SF/2000 SF=27 X 1 TREE = 27 LG TREES  
 OUTLOT B = 53,020 SF/2000 SF=27 X 3 SHRUBS = 81 LG SHRUBS

OUTLOT D = 633,356 SF -58,290 SF BELOW NWL; -199,940 SF WETLANDS; -213,008 SF PARK=162,118 SF  
 OUTLOT D = 612,118 SF/2000 = 81 X 1 TREE = 81 LG TREES  
 OUTLOT D = 612,118 SF/2000 = 81 X 3 SHRUBS = 243 LG SHRUBS

OUTLOT E = 30,680 SF -5,130 SF BELOW NWL=25,550 SF  
 OUTLOT E = 25,550 SF/2000 = 13 X 1 TREE = 13 LG TREES  
 OUTLOT E = XX.XXX SF/2000 = 13 X 3 SHRUBS = 39 LG SHRUBS

OUTLOT F = 14,985 SF/2000 = 7 X 1 TREES = 7 LG TREES  
 OUTLOT F = 14,985 SF/2000 = 7 X 3 SHRUBS = 21 LG SHRUBS

TOTAL TREES TO BE PLANTED IN OPEN AREAS = 137 TREES  
 TOTAL SHRUBS TO BE PLANTED IN OPEN AREAS = 412 SHRUBS

BLVD TREES TO BE INSTALLED BY BUILDER @ TIME OF HOME CONSTRUCTION

**Carlson McCain**  
 ENVIRONMENTAL • ENGINEERING • SURVEYING  
 248 Apollo Dr, Suite 100, Lino Lakes, MN 55014  
 Phone: 763-489-7900 Fax: 763-489-7959

**PLANTING PLAN SCHEDULE**  
**NORTHPOINTE**  
 Lino Lakes, Minnesota

**AJE COMPANIES**  
 1875 Station Parkway NW  
 Andover, MN 55304

**REVISIONS**  
 1. 1/13/14 Per City Comments  
 2.  
 3.  
 4.  
 5.  
 6.  
 DRAWN BY: KO  
 DESIGNED BY: KO  
 ISSUE DATE: 11/8/13  
 I hereby certify that this plan, specification or report was prepared by me or under my direct supervision and that I am a duly Licensed Landscape Architect under the laws of the State of Minnesota  
 Name: Kathleen O'Connell  
 Signature:  
 Date: 11/8/13 License #: 20862  
 L4 of L4

**ENVIRONMENTAL BOARD  
AGENDA ITEM 5B**

**STAFF ORIGINATOR:** Marty Asleson, Environmental Coordinator

**MEETING DATE:** January 29, 2014

**PROJECT NAME:** Talan Ridge

**REQUEST:** Talan Ridge/Preliminary Plat and Final Plat Approval

**APPLICANT:** Avenger Home Solutions, Inc.

---

**PROPOSED DEVELOPMENT**

The site is located at 260 Linda Avenue. The owner wants to create two additional residential lots by subdividing the property. The total site acreage is 1.52. The area of disturbed soil is less than 1 acre.

**SITE CHARACTERISTICS**

Soils

There are both hydric and non-hydric soils identified on the site. Soils should not be imported for use on the site if it changes the nature of existing pervious soils.

Land Cover

The pre-subdivided parcel has been managed as a residential landscape with hardwood and softwood trees, cultural grass and typical pond/wetland plants.

Wetlands

There is a wet area on the SE side of the properties and identified as wetland. No delineation has been completed. The delineation will need to be completed prior to final plat of the 3<sup>rd</sup> lot.

Tree Preservation and New Tree Requirements

The owner should show the location of tree-preservation fences. Usually a boulevard tree is required for every 70 feet of frontage. Rows of Pine and Spruce line the streets on the property side of a power line. The trees are about 50 feet tall and have been pruned

around the wires with the lower branches extending on to the ROW. Because of the wires and existing canopy, there will be no room to plant additional trees. The west side has pine trees that will be saved except for trees that are on the proposed building pads and driveway entrances. There is a row of Black walnut inside the pines. Some of these trees will be removed.

#### Surface Water Management/And Storm Water Pollution Prevention

All water from this site goes to Baldwin Lake. Surface water flow must be designed to go to existing pond. The owner should install parcel perimeter control, and perimeter control around the wetland at a minimum. Perimeter control should be shown on the plan. Infiltration should be provided for the 100 year rain event with some pretreatment for water entering the existing wetland.

#### Floodplain

There is no flood plain present on the site.

#### Wellhead

The County Well Index identifies a well on the site. The location of the well must be identified on the survey.

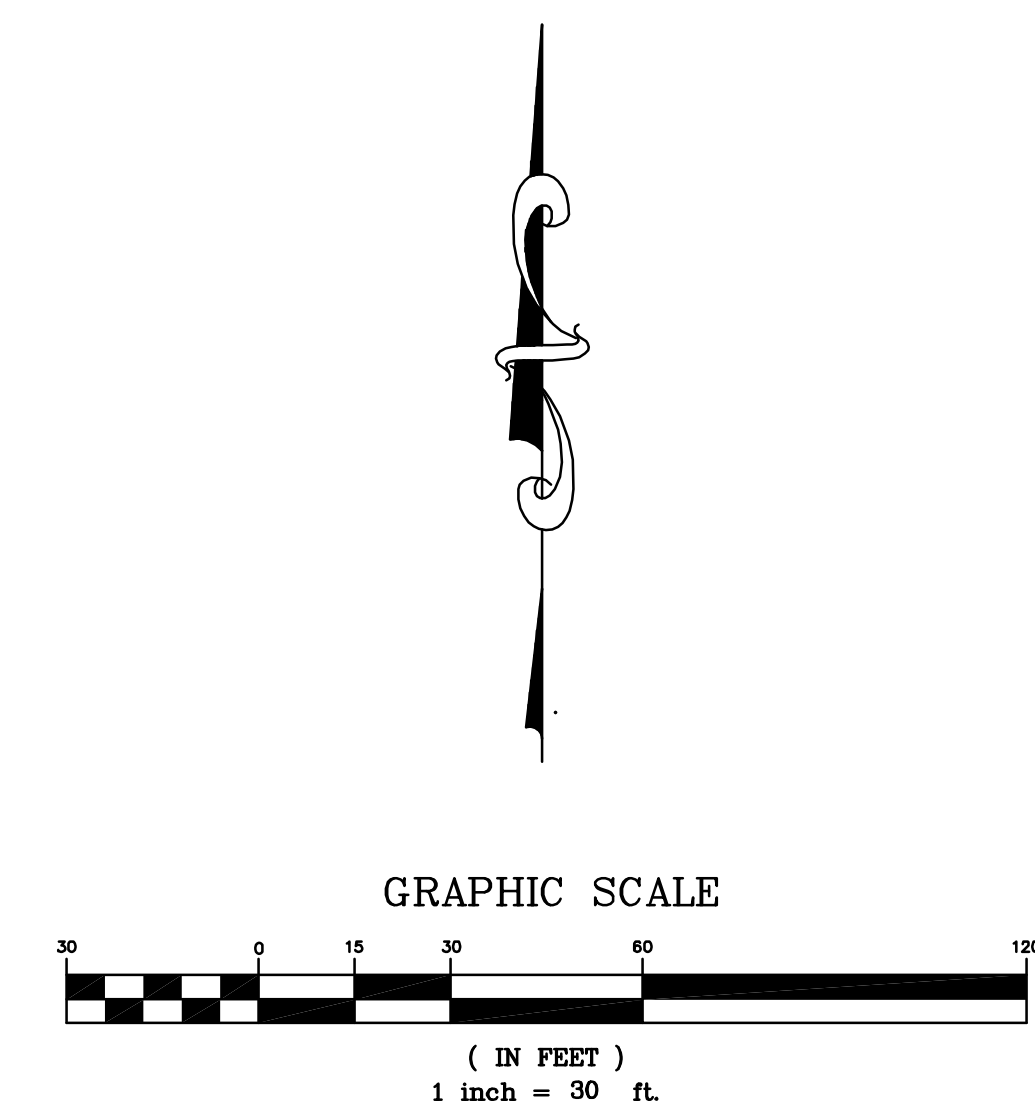
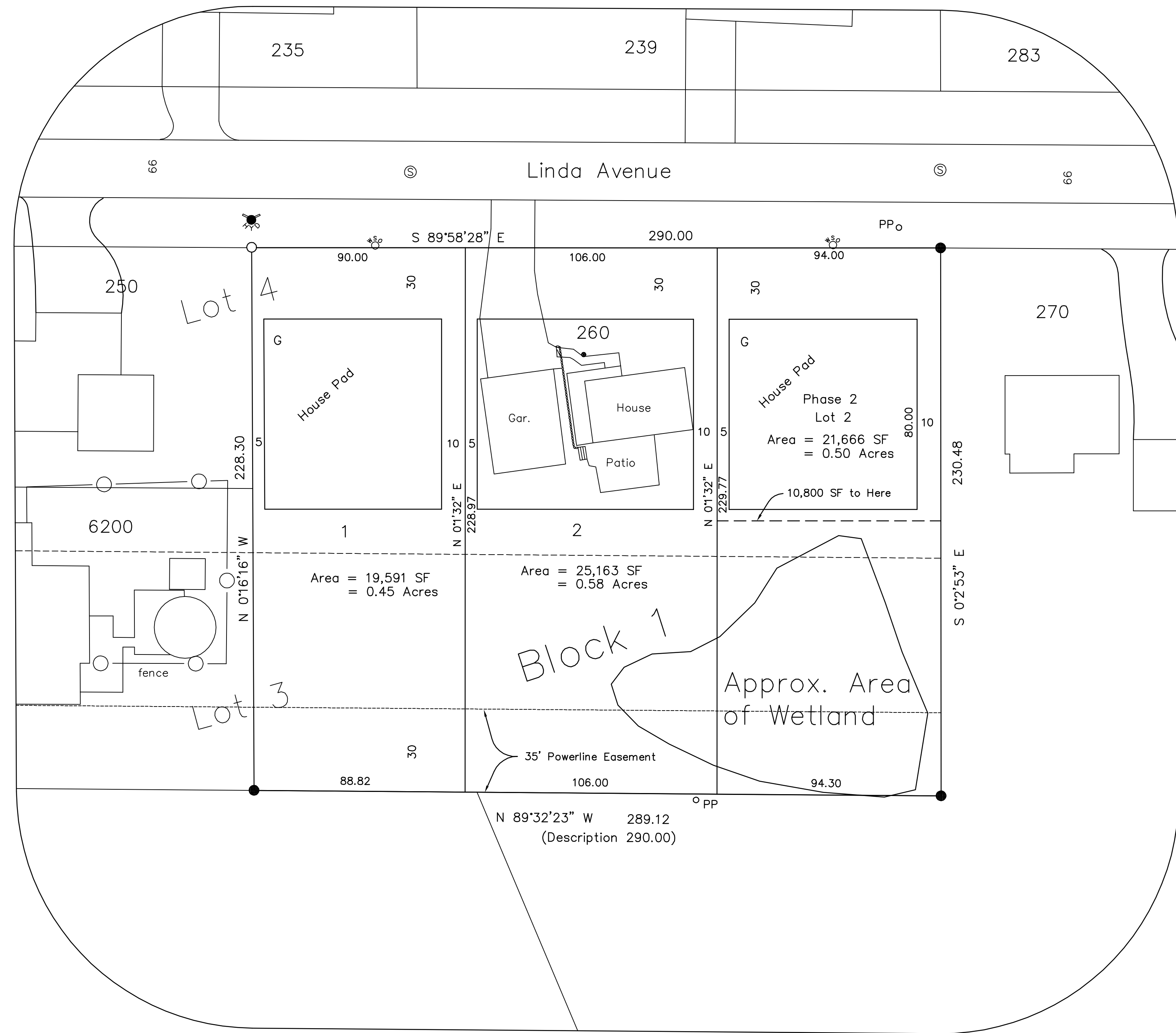
### **RECOMMENDATION**

Recommend approval with staff and Environmental Board comments and recommendations

### **ATTACHMENTS**

1. Talan Ridge Preliminary Plat
2. Grading Erosion Control Plan
3. Final Plat





Setbacks:  
 30' Front  
 5' Garage Side  
 10' House Side  
 30' House Rear

Comprehensive Plan 2030 Designation: Low-Density Residential  
 Current Zoning: Rural Proposed Zoning: Single Family Residential  
 Total Area of Plat: 66,420 SF = 1.52 Acres  
 Total Upland: 57,828 SF = 1.32 Acres

Legal Description:  
 The East 290.00 feet of Lots 3 and 4,  
 Block 2, Arthur E Thom Acres  
 Anoka County, Minnesota

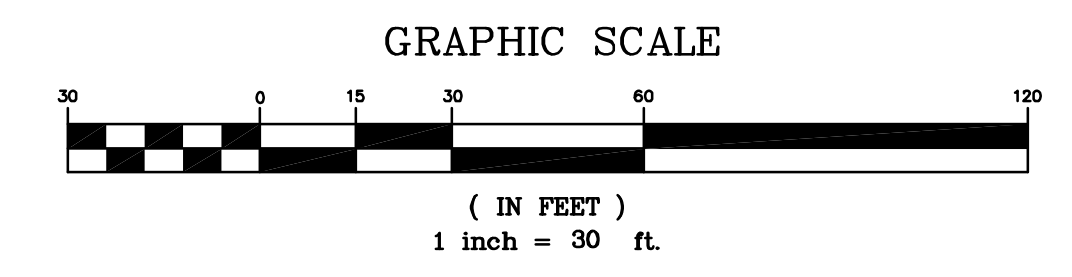
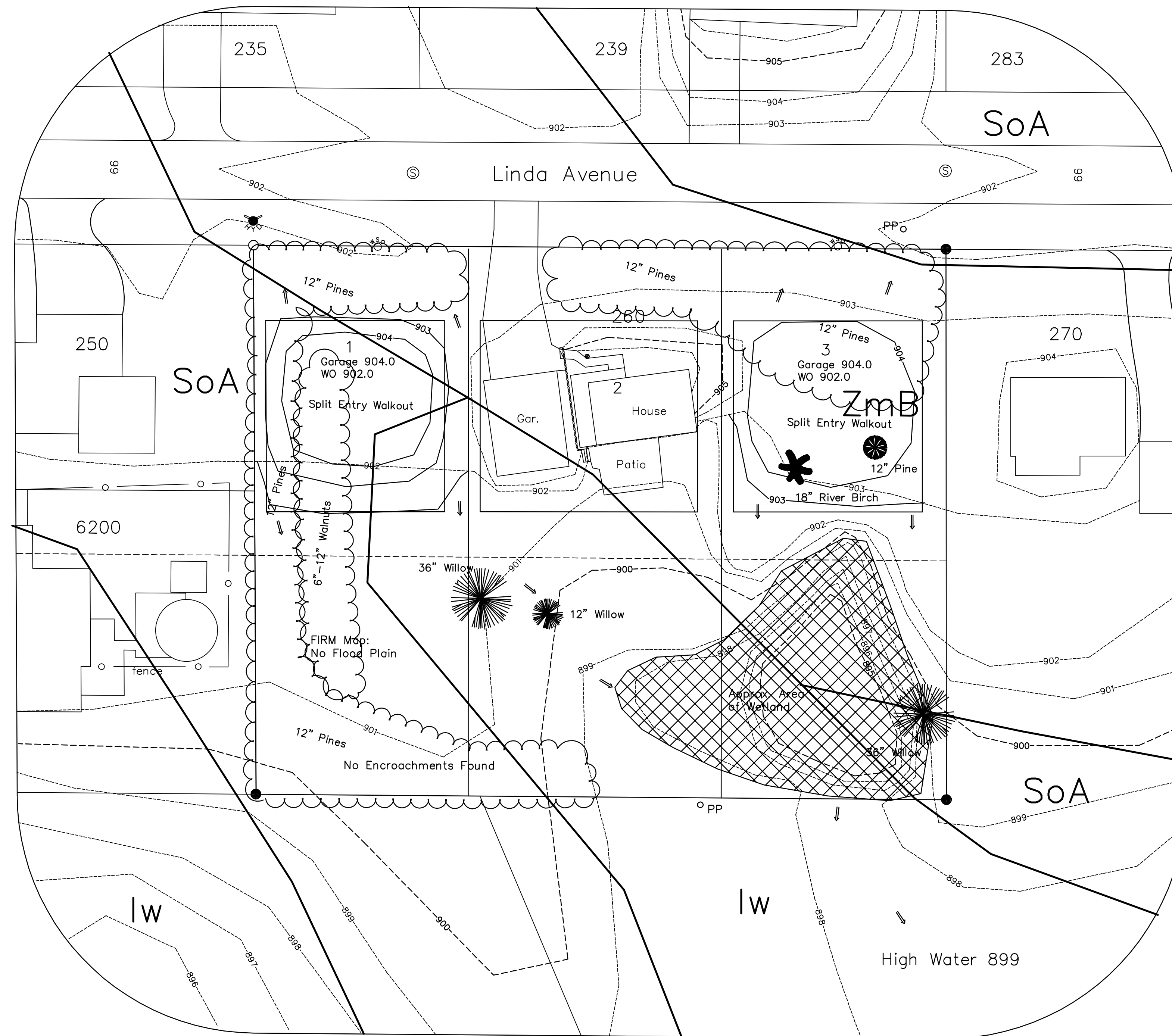
13048

I hereby certify that this plan, specification, or report was prepared by me or under my direct supervision, and that I am a duly Licensed Professional Engineer under the State of Minnesota Statutes, Sections 326.02 to 326.16.  
*Tedd W. Mattke*  
 Tedd W. Mattke, P.E.  
 Date: 12/26/13 Minn. Reg. No. 15612

		ADDITIONS		REVISIONS	
NO.	DATE	DRWN.	CHKD.	APPVD.	COMMENTS

**Mattke Surveying & Engineering, Inc.**  
 599 Hawthorn Road  
 Lino Lakes, MN 55014  
 (763) 783-0300

Avenger Home Solutions, Inc. Mound, MN 55364  
 3128 Priest Lane (612) 991-3888  
 AUTHORITY  
 PROJECT TITLE **TALAN RIDGE**  
 DRAWING TITLE **Preliminary Plat**  
 DRAWN CADD APPROVED TWM  
 CHECKED DATE 12/26/13 SCALE: 1"=30'  
 DRAWING 3 OF 6



Notes:  
 Existing Drainage will be maintained.  
 Fill material will be imported as needed at the time of building construction.  
 Tree removal will be as needed for home construction.  
 Disturbed areas of sites will be restored with 4" minimum topsoil and sod.  
 Landscaping will include placement of sod over disturbed areas, and maintenance of several existing trees.

13048

I hereby certify that this survey was prepared by me or under my direct supervision, and that I am a duly Licensed Land Surveyor under the laws of the State of Minnesota.

*Tedd W. Mattke*  
 Tedd W. Mattke, LS  
 Date: 12/26/13 Minn. License No. 15612

		ADDITIONS / REVISIONS			
NO.	DATE	DRWN.	CHKD.	APPVD.	COMMENTS

**Mattke Surveying & Engineering, Inc.**

599 Hawthorn Road  
 Lino Lakes, MN 55014  
 (763) 783-0300

Avenger Home Solutions, Inc. Mound, MN 55364  
 3128 Priest Lane (612) 991-3888

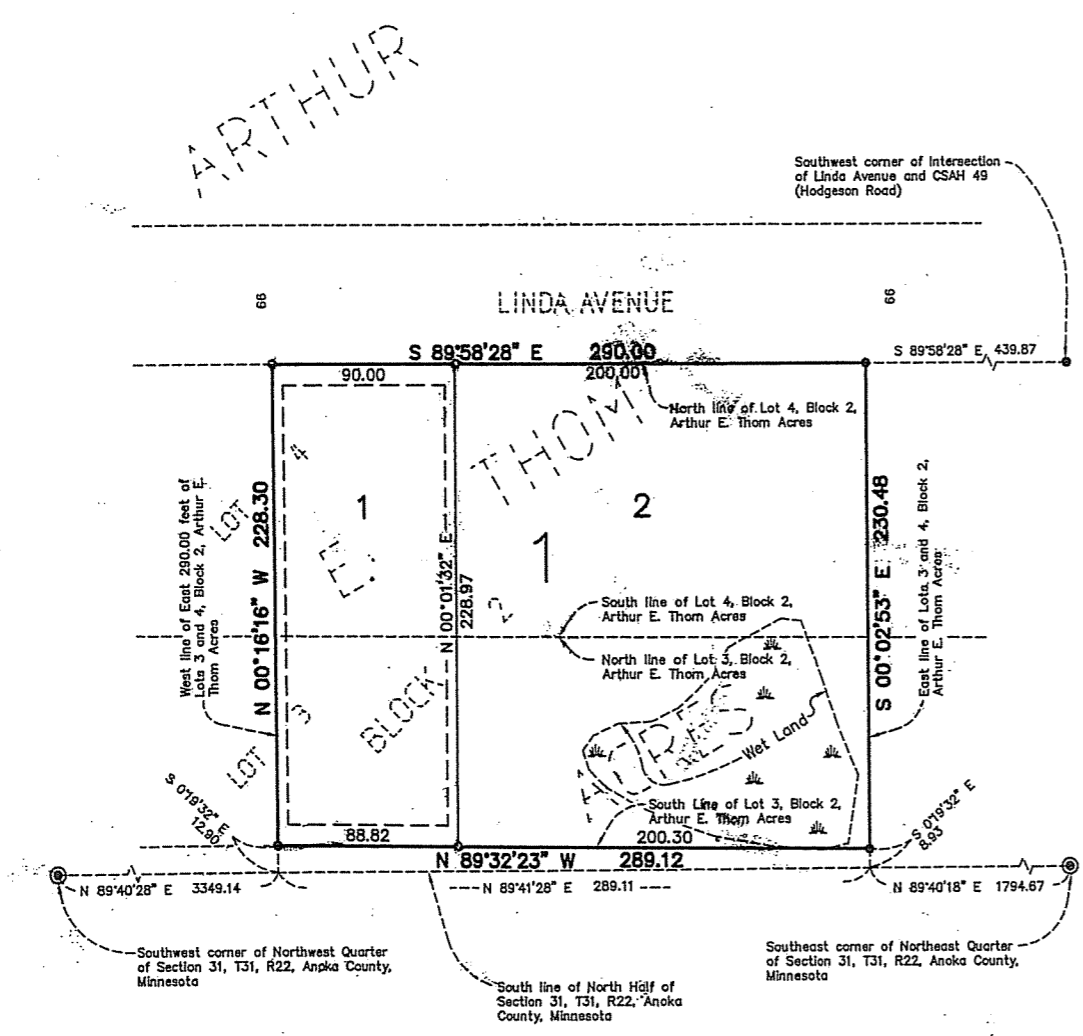
PROJECT TITLE **TALAN RIDGE**  
 Preliminary Grading, Drainage & Erosion Control Plan

DRAWN CADD APPROVED TWM SCALE: 1"=30'  
 CHECKED DATE 12/26/13

DRAWING 4 OF 6

# Talan Ridge

City of Lino Lakes  
 County of Anoka  
 Section 31, T.31. R.22



KNOW ALL PERSONS BY THESE PRESENTS: Avenger Home Solutions, Inc., a Minnesota Corporation, fee owner of the following described property, and Renovo Capital LLC, a Minnesota Limited Liability Company, mortgagee of the following described property, and Nate Helmueller, mortgagee of the following described property situated in the County of Anoka, State of Minnesota, to-wit:

The East 290.00 feet of Lots 3 and 4, Block 2, Arthur E Thom Acres, Anoka County, Minnesota

Have caused the same to be surveyed and platted as TALAN RIDGE and do hereby donate and dedicate to the public the easements for drainage and utility purposes as shown on the plat. In witness whereof, said Avenger Home Solutions, Inc. has caused these presents to be signed by its proper officer this \_\_\_ day of \_\_\_, 20\_\_.

Also in witness whereof, said Renovo Capital LLC caused these presents to be signed by its proper officer this day of \_\_\_, 20\_\_. Also in witness whereof, said Nate Helmueller has hereunder set his hand this day of \_\_\_, 20\_\_.

Avenger Home Solutions, Inc.  
 Patrick Judge, as President  
 Renovo Capital LLC  
 David Frey, as Manager  
 Nate Helmueller, Mortgagee

STATE OF MINNESOTA) The foregoing instrument was acknowledged before me this \_\_\_ day of \_\_\_, 20\_\_ by Patrick Judge as President of Avenger Home Solutions, Inc., a Minnesota Corporation, on behalf of the Corporation.

Notary Public, \_\_\_ County, Minnesota  
 My Commission expires \_\_\_

STATE OF MINNESOTA) The foregoing instrument was acknowledged before me this \_\_\_ day of \_\_\_, 20\_\_ by David Frey as Manager of Renovo Capitol LLC, a Minnesota Limited Liability Company, on behalf of the Company.

Notary Public, \_\_\_ County, Minnesota  
 My Commission expires \_\_\_

STATE OF MINNESOTA) The foregoing instrument was acknowledged before me this \_\_\_ day of \_\_\_, 20\_\_ by Nate Helmueller, mortgagee.

Notary Public, \_\_\_ County, Minnesota  
 My Commission expires \_\_\_

I hereby certify that I have surveyed and platted the property described on this plat as TALAN RIDGE, that this plat is a correct representation of the survey, that all distances are correctly shown on the plat in feet and hundredths of a foot, that all monuments will be correctly placed in the ground as designated, that the outside boundary lines are correctly designated on the plat, and that there are no wet lands as defined in MS 505.02, Subd. 1, or public highways to be designated other than as shown.

Tedd W. Mattke, Land Surveyor  
 Minnesota License No. 15612

STATE OF MINNESOTA) The foregoing instrument was acknowledged before me this \_\_\_ day of \_\_\_, 20\_\_ by Tedd W. Mattke, Land Surveyor.

Notary Public, \_\_\_ County, Minnesota  
 My Commission expires \_\_\_

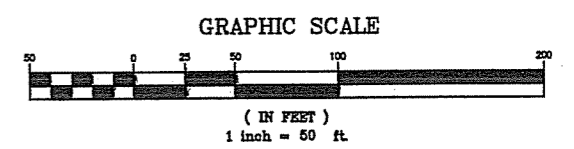
I hereby certify that the City Council of the City of Lino Lakes, Anoka County, Minnesota, duly accepted and approved the plat of TALAN RIDGE at a regular meeting held this \_\_\_ day of \_\_\_, 20\_\_. If applicable, written comments and recommendations of the Commissioner of Transportation and the County Highway Engineer have been received by the City, or the prescribed 30 day period has elapsed without receipt of such comments and recommendations, as provided by Minn. Statutes, Section 505.03, Subd. 2.

Approved by the Council of the City of Lino Lakes, this \_\_\_ day of \_\_\_, 20\_\_.

Signed \_\_\_\_\_ (Mayor)  
 \_\_\_\_\_ (City Clerk)

Checked and Approved this \_\_\_ day of \_\_\_, 20\_\_.

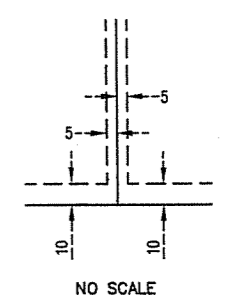
By \_\_\_\_\_, Anoka County Surveyor.



NOTE: FOR THE PURPOSES OF THIS PLAT, THE SOUTH LINE OF THE NORTH HALF OF SECTION 31, T31, R22 IS ASSUMED TO BEAR N 89°41'28" E

- ⊙ DENOTES AN ANOKA COUNTY MONUMENT
- DENOTES FOUND IRON MONUMENT
- DENOTES 1/2" IRON PIPE SET AND MARKED BY R.L.S. REGISTRATION NO. 15612

DRAINAGE & UTILITY EASEMENTS SHOWN THUS:



BEING 5 FEET IN WIDTH, UNLESS OTHERWISE INDICATED, ADJOINING LOT LINES, AND BEING 10 FEET IN WIDTH, UNLESS OTHERWISE INDICATED, ADJOINING RIGHT-OF-WAY LINES, AS SHOWN ON THE PLAT.

# Memo



To: Lino Lakes Environmental Board  
From: Marty Asleson  
Date: January 29, 2014  
Re: Regulation Updates

---

The Environmental Board has asked for an update on environmental regulation that effects project review. Mike Grochala will give that update when we have our annual NPDES review in the next few months. Last year we had this in May.

The Environmental Board is the City Surface Water/Stormwater (NPDES), zoning code ( landscape, tree preservation ), Threatened and Endangered Species, AUAR, EAW, review committee. Forestry ,forest pest, and recycling issues that come up at times and may not be part of a project review, but the Environmental Board is still the responsible committee for making recommendations...

We have an evolutionary step history of conservation development and guiding documents that have got us to this place in time. We have straight zoning regulation and PUD/Conservation Development approaches to development. Tools in the Zoning Code and flexibility in PUD help us to achieve desirable outcomes for our natural resources.

Regulations cross-over from State to County to City to Watershed District (or districts since we have two) It is important with some of this regulation to be aligned and not contradictory. Hopefully we can sort some of this out when we discuss it at the future meeting.

**ENVIRONMENTAL BOARD  
AGENDA ITEM 6C**

STAFF ORIGINATOR: Dawn Bugge, Community Development Assistant

ENV. BD. MEETING DATE: January 29, 2014

REQUEST: Discussion Item –  
Environmental Board Meeting Dates for 2014

APPLICANT: Not applicable

REVIEW DEADLINE: Not applicable

**BACKGROUND**

Environmental Board meetings take place on the last Wednesday of each month at 6:30 p.m., unless rescheduled due to conflict. The following dates are set for Environmental Board Meetings in 2014:

January 29

February 26

March 26

April 30

May 28

June 25

July 30

August 27

September 24

October 29

November 19 (rescheduled due to Thanksgiving)

December 17 (rescheduled due to Christmas & New Year's)

**RECOMMENDATION**

None

**ATTACHMENTS**

None

## 2014 Environmental Goals

- Promote environmental stewardship with the citizens of Lino Lakes by communicating environmental initiatives in the city using various means of communication such as:
  - City Web Pages
  - Newsletter
    - Spring
    - Summer
    - Fall
    - Winter
  - Power Point Presentation
  - Earth Day
  - Arbor Day
  - Recycling Days
  - Partner with Anoka County Integrated Waste and the School District with a focus on recycling
- Participate in Blue Heron Days (August), providing public service educational material to the public if the opportunity presents itself
- Participate in Earth Day (April) activities in the community, promoting environmental awareness and collaboration with other environmental focused organizations.
- Communicate with our residents about conservation workshops offered in our area. Coordinate with RCWD outreach and education coordinator. Add a link to Anoka County RCWD.
- Monitor any activity in the AUAR as well as other proposed development areas, focusing on the values that Lino Lake's citizens have expressed in the vision for our city and the unique ecological aspects of our wetlands, lakes and streams and subsurface waters. Apply mitigation plan as defined for that area. Be involved in any review/updates of the AUAR.
- Perform an evaluation of past Environmental Board recommendations for development projects. Review a sampling of a variety of projects by site visits, discussion with city staff, and landowners, neighbors, on the outcomes of the Board's recommendations. If necessary, submit a summary of significant findings resulting from the review in writing to the Community Development Director.
- Promote conservation development within the City incorporating the Open Space/Trail Plan and Handbook for Environmental Planning and Conservation Development within the scope of the new Resource Management Plan, and the RCWS rules. Review rule changes, SAMP documents and Surface Water Management Plan updates as they occur.

- To meet or exceed our City recycling goal of 50 (1819 tons) percent or greater of our Municipal solid waste. Find innovative ways to promote and encourage recycling as a city. Inventory city facilities for recycling and look into ways for school facilities to reduce waste and increase recycling. Apply for recycle grants.
- Maintain the Community Garden site and establish a preparatory gardening group. Work to get a sign for the garden. Continue to monitor the soil quality at the Community Garden site.
- Implement the Lino Lakes Preparedness Plan for EAB as needed.
- Work on Wollan's Park Wetland bank.
- Continue to monitor the Heron rookery and water quality in the northern one third of Peltier Lake and to support the protection of resources in that area. Update Council on these matters
- Update Surface Water Management Plan.

NOW, THEREFORE, BE IT RESOLVED BY THE CITY COUNCIL OF THE CITY OF LINO LAKES, MINNESOTA:

1. That the 2014 goals of the Lino Lakes Environmental Board be adopted.

Adopted by the Lino Lakes City Council this \_\_\_ Day of \_\_\_\_\_, 2014

\_\_\_\_\_  
Jeff Reinert, Mayor

The motion for adoption of the foregoing resolution was duly seconded by Council Member \_\_\_\_\_ and upon vote being taken thereon, the following voted in favor thereof:

The following voted against same:

Whereupon said resolution was duly passed and adopted.

### **CERTIFICATION**

I hereby certify that the above is a correct copy of a resolution duly passed, adopted and approved by the City Council on date.