



15-foot back

Protective area in grey around sign is 13.5 ft x 5 ft.  
Sign (green) is 10.5 ft. x 2 ft.

Layton Ave. N.

3712 Layton Ave. N.

Source: Esri, DeLorme, GeoEye, AerialWorks, IGN, GeoEye, AeroGRID, IGN, GP, and the GIS User Community

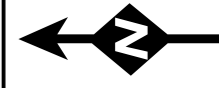
# Site Plan: 3712 Layton Avenue North



Data Source: Washington County, MN  
8-1-2013

Legend

Parcel Boundary



0 30 60 120 Feet

1"=30'

Drawing Date: 08.09.13

Customer:  
Lake Elmo Inn Event Center

Sales / Project Manager:  
Bob Ackersold  
952.908.9107 - BobA@Sign-Source.com

Customer Service Representative:

Designer:  
Tom Schommer  
952.908.9111 - TomS@Sign-Source.com

Order / Est. #:  
e29396

File Name:  
e29396 Lake Elmo - Monument Sign.ai

File Location:  
A-Z Tom's Mac

Fonts:

Rev: 1.0 | Revision Notes

Rev. 2: -  
Rev. 3: -  
Rev. 4: -  
Rev. 5: -  
Rev. 6: -  
Rev. 7: -  
Rev. 8: -  
Rev. 9: -  
Rev. 10: -



7660 Quattro Drive  
Chanhassen, MN 55317  
www.sign-source.com  
Fax: 952.908.9153

This drawing is the property of SignSource, Inc. and may not be used, reproduced or disclosed without written authorization.

Overall Sign Height: 13 ft.  
Base Height: 48"  
Sign square footage: 68.3 sq ft (sign 103"x 95.5")  
Message Center size: 81" x 33" (18.5 sf) Amber LED

Materials & Substrates:

- Interior ● Exterior
- 1 Custom Fabricated Aluminum Canopy Painted to Match Building
- 2 Fabricated Aluminum Sq. Tube Trellis Painted Black to Match Building
- 3 LED Halo Lit 1" Thick Push Thru Letters w/ Matte Black Vinyl on Faces
- 4 Fabricated Aluminum Sign Cabinet Painted Beige to Match Building
- 5 Daktronics Message Center 81" x 33" 18.5 Sq. Ft. Amber LED
- 6 Fabricated Aluminum Caps / Accents Painted Green to Match Building
- 7 Masonry and Block Base to Match Building
- 8 Below Grade Footer Details TBD By Others



I Have Verified The Accuracy Of Colors, Layout, Quantities, Sizes, Spelling, & Wording. I Hereby Authorize Release To Production According To This Approved Submittal.

Approved As Is: \_\_\_\_\_

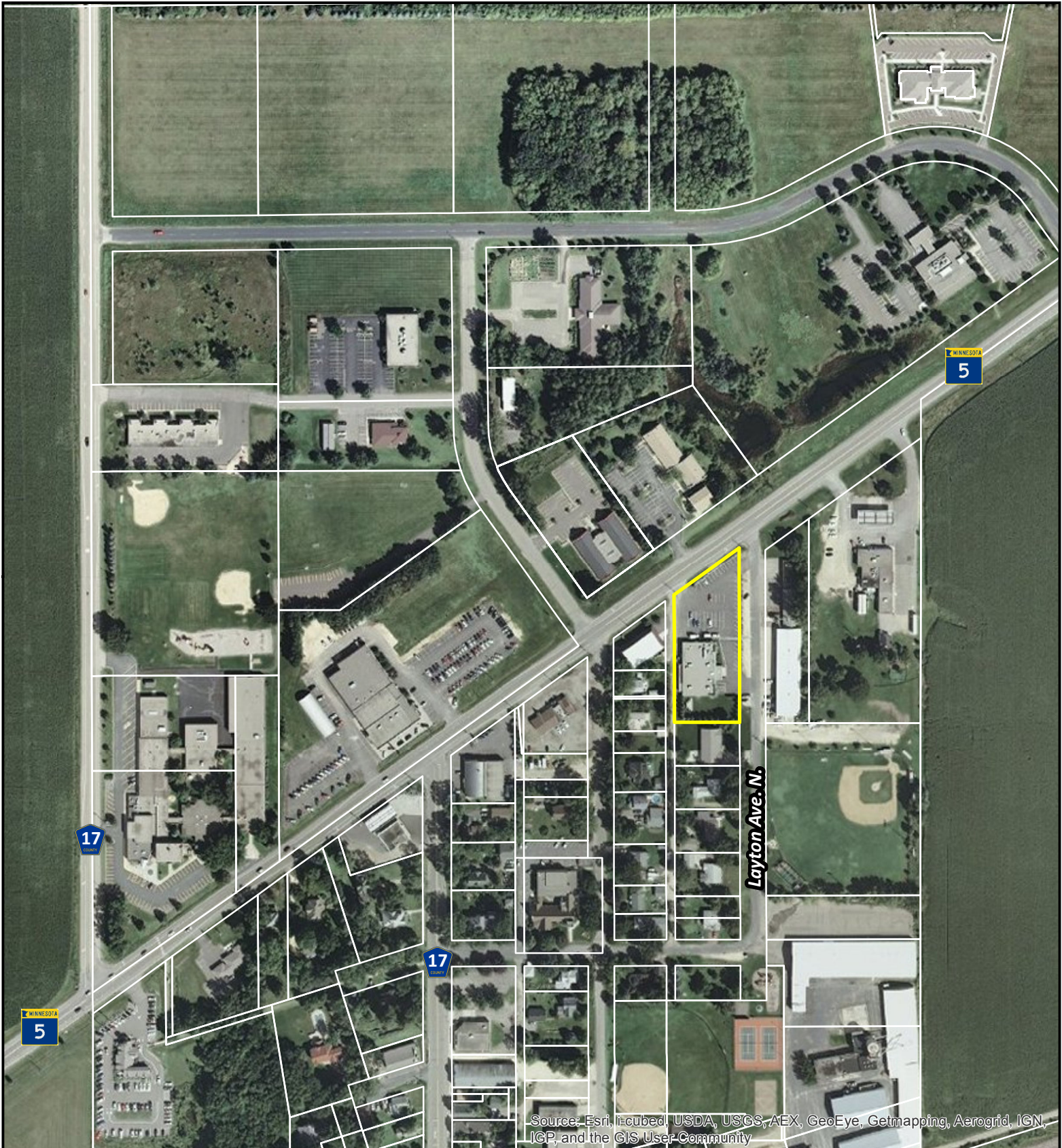
Production Will Not Begin Until Signed Approval Is Faxed Back.

Revise & Resubmit: \_\_\_\_\_

COLOR DISCLAIMER: Due to variances among color monitors and printers, the colors that appear on your screen or as printed may not be exact.

1/2" = 1'  
1:24 SCALE  
SCALE DRAWING DO NOT PHOTOCOPY!  
1.00 in.  
Formatted for 11" x 17" Paper

This drawing is the property of SignSource, Inc. and may not be used, reproduced or disclosed without written authorization.



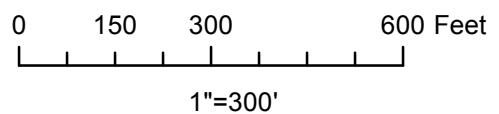
# Location Map: 3712 Layton Avenue North



Data Source: Washington County, MN  
8-22-2013



3712 Layton Ave. N.



# Site Visit: 3712 Layton Ave. N.



Lake Elmo Event Center ditch looking east



Lake Elmo Event Center ditch looking west



Other ditch areas on TH-5



Other ditch areas on TH-5

## Site Visit: 3712 Layton Ave. N.



40 mph zone begins approximately 350 feet to the east of the Lake Elmo Event Center



Telephone/power poles along TH-5



Existing Lake Elmo Event Center sign with telephone/electrical lines