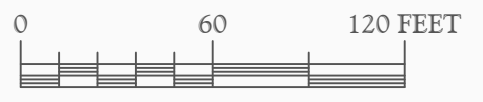
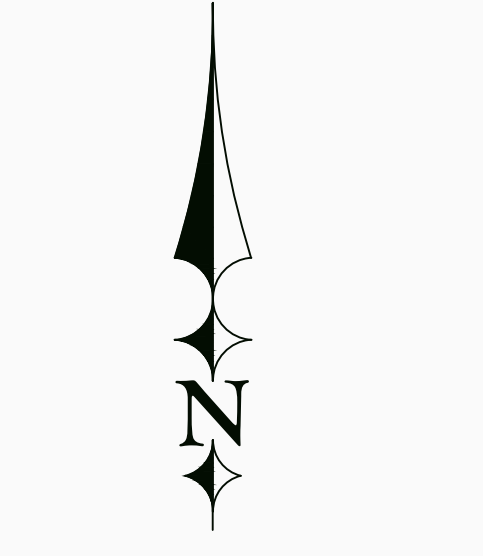
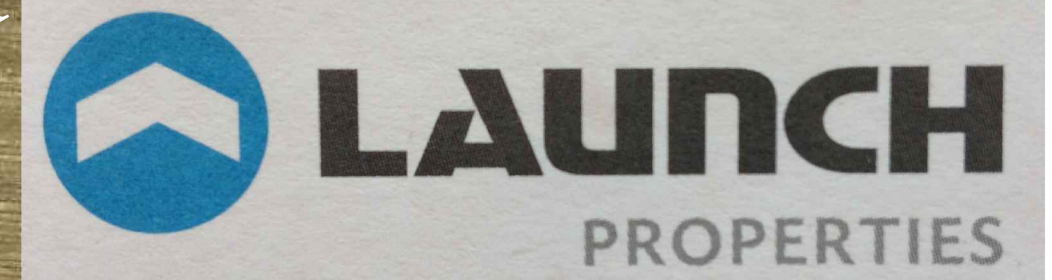


# Proposed Business Park

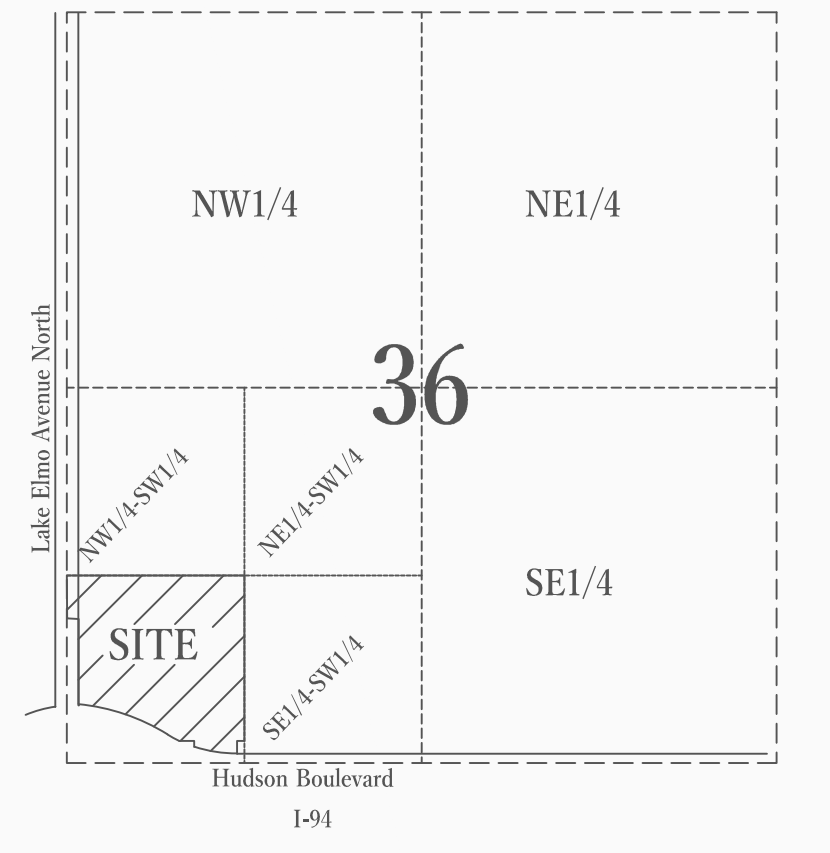
Lake Elmo, Minnesota

03-07-2014

Existing Conditions



GRAPHIC SCALE



## Legend

- EXISTING PARCEL BOUNDARY
- EXISTING 2-FT CONTOUR

**Mohagen  
Hansen  
Architectural  
Group**



[www.mohagenhansen.com](http://www.mohagenhansen.com)

**ERICKSON CIVIL**

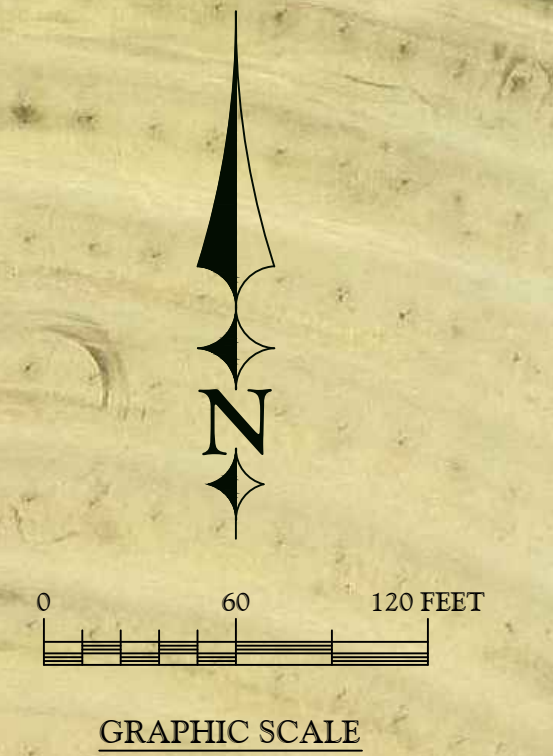
333 North Main Street, Suite 201, Stillwater, MN 55082  
Phone 612.309.3804 [www.ericksoncivilsite.com](http://www.ericksoncivilsite.com)

# Proposed Business Park

Lake Elmo, Minnesota

03-07-2014

Concept Layout



Total Parcel Area	1,263,650
Pavement	362,120
Sidewalks	8,510
Proof of Parking	16,380
Building	385,150
Total Imperviousness	772,160 61%
Total Open Area	491,490 39%

**Mohagen Hansen**  
Architectural Group  
www.mohagenhansen.com

**ERICKSON CIVIL**  
333 North Main Street, Suite 201, Stillwater, MN 55082  
Phone 612.309.3804 www.ericksoncivilsite.com

# Proposed Business Park

Lake Elmo, Minnesota

Building Renderings

03-07-2014



View from Southeast - Phase I Building



View from Southwest - Phase I Building



View from West - Phase I Building

**Mohagen  
Hansen**  
Architectural  
Group



[www.mohagenhansen.com](http://www.mohagenhansen.com)

**ERICKSON CIVIL**  
333 North Main Street, Suite 201, Stillwater, MN 55082  
Phone 612.309.3804 [www.ericksoncivilsite.com](http://www.ericksoncivilsite.com)