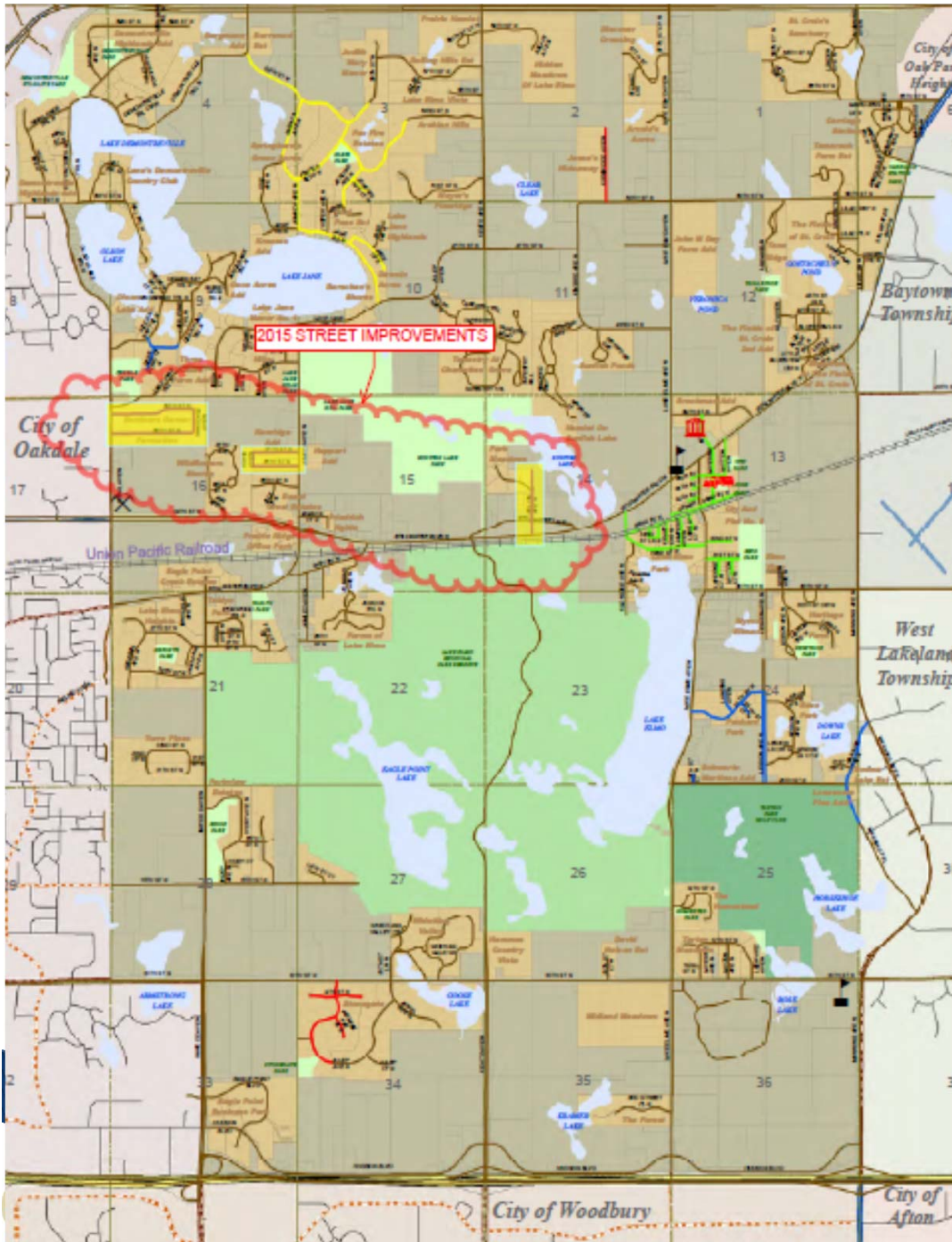


2015 STREET AND UTILITY IMPROVEMENTS

AUTHORIZE PREPARATION OF FEASIBILITY REPORT

FOCUS ENGINEERING, inc.

JULY 1, 2014



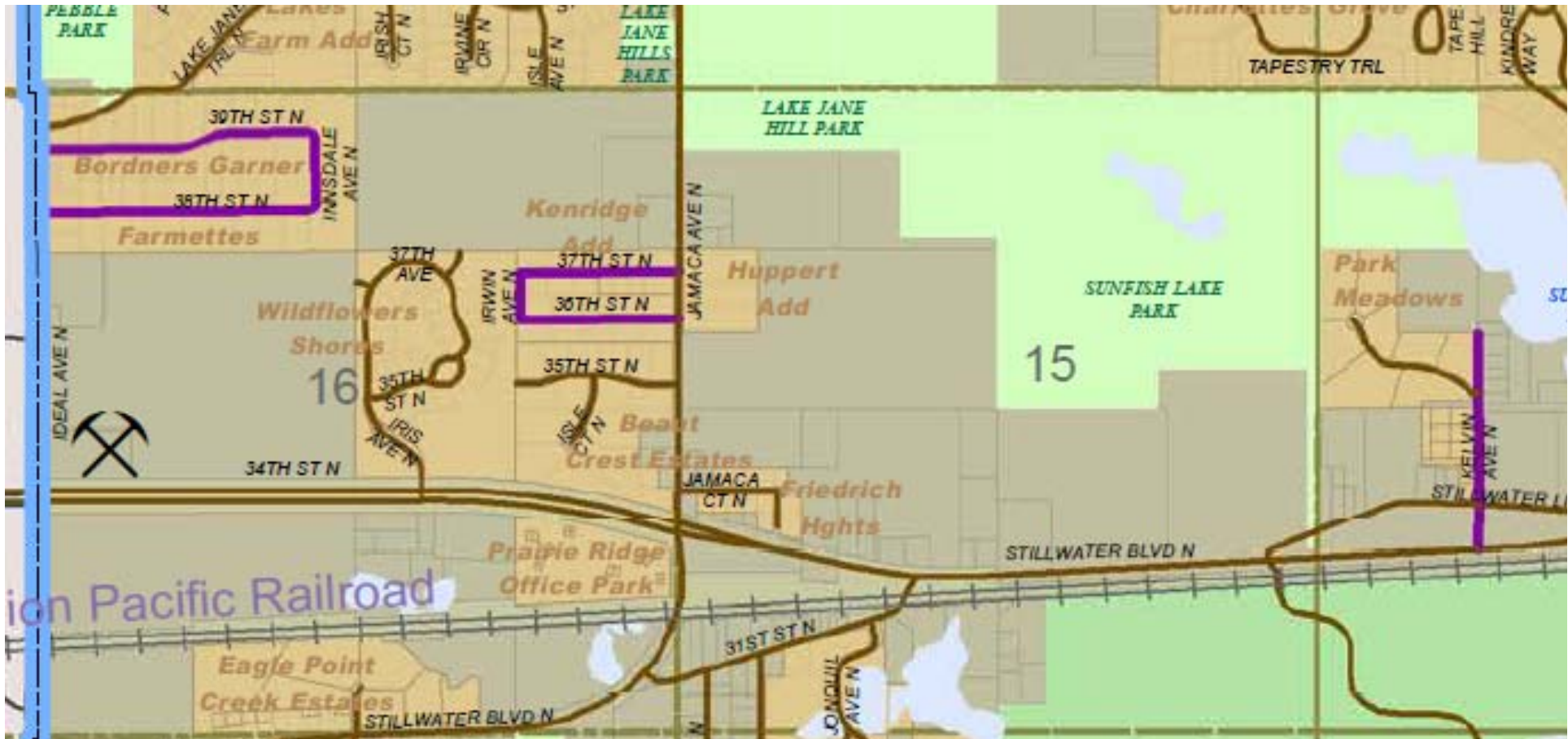
2015 STREET IMPROVEMENTS:

- **Bordners Garner Farmettes:**
38th St, 39th St & Innsdale Ave
- **Kenridge Addition:**
36th St, 37th St & Irwin Ave
- **Kelvin Avenue**

2014 - 2018 RESIDENTIAL STREET CAPITAL IMPROVEMENT PLAN

JULY 1, 2014

FOCUS ENGINEERING, inc.



JULY 1, 2014

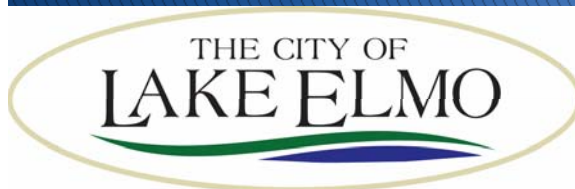


FOCUS ENGINEERING, inc.

2015 STREET IMPROVEMENTS – PROJECT SCHEDULE

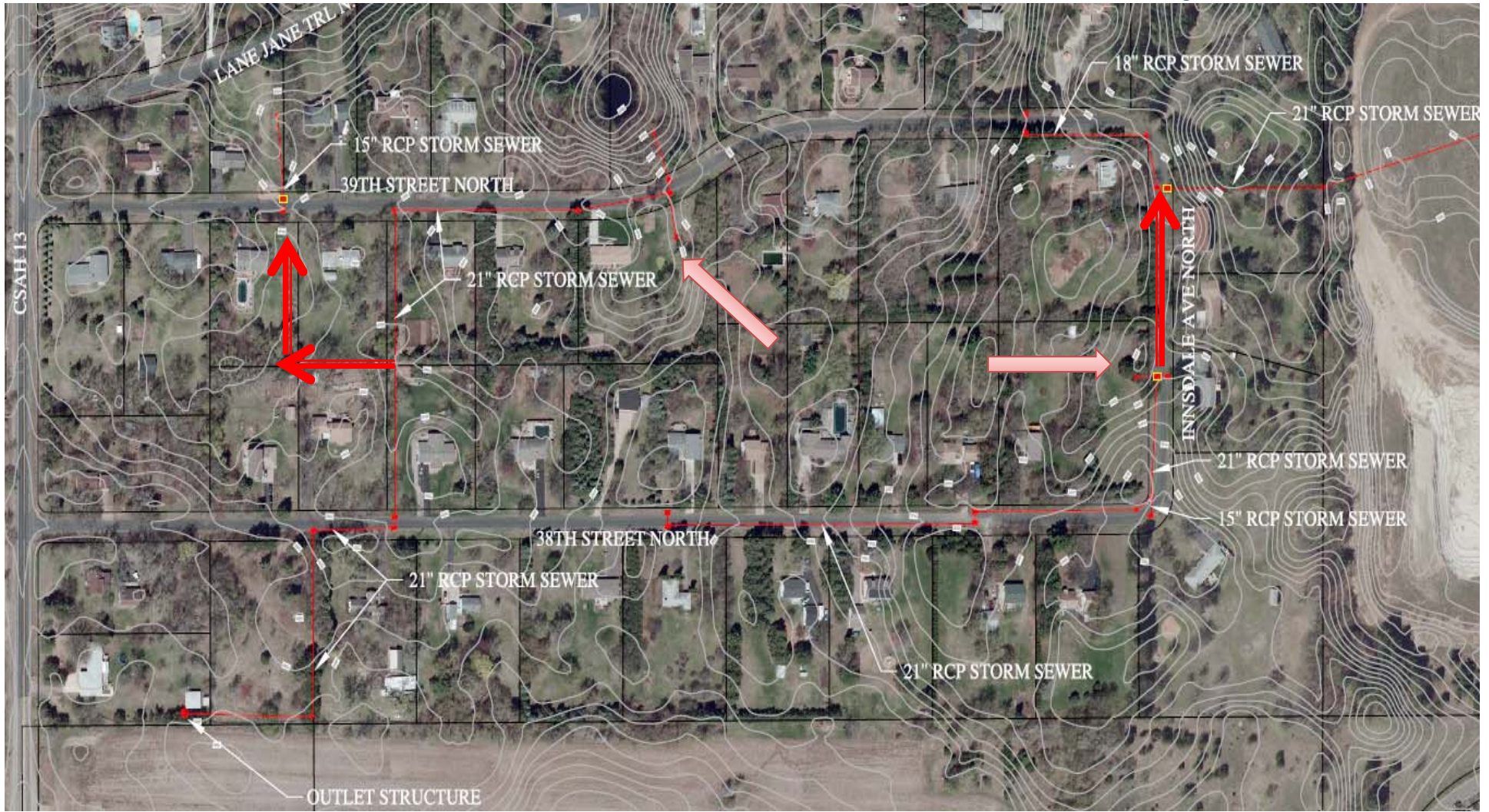
July 1, 2014	Council authorizes Feasibility Report.
September 2, 2014	Presentation of Feasibility Report. Council accepts Report and Calls Hearing.
September, 2014	Property owner meeting. Presentation of Report findings and recommendations.
October 7, 2014	Public Improvement Hearing. Council orders Preparation of plans and specifications.
January 20, 2015	Council approves Plans and Specifications; Orders Advertisement for Bids.
February 19, 2015	Receive Contractor Bids.
March 3, 2015	Council accepts bids and awards Contract.
April 15, 2015	Conduct Pre-construction Meeting and Issue Notice to Proceed.
August 28, 2015	Substantial completion.
October 16, 2015	Final completion.

JULY 1, 2014



FOCUS ENGINEERING, inc.

BORDNERS GARNER FARMETTES – Draft Storm Sewer Improvements

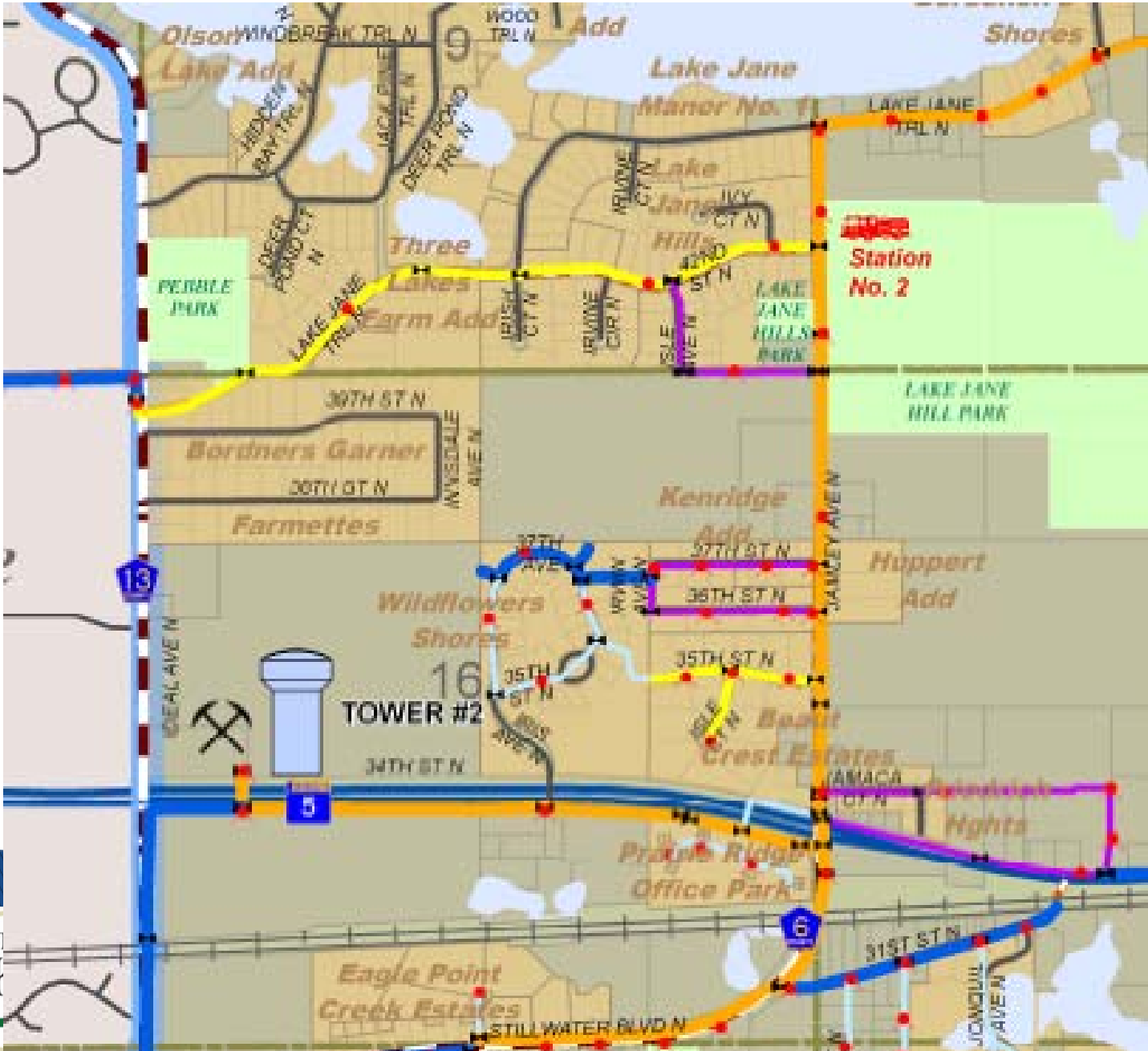


JULY 1, 2014



FOCUS ENGINEERING, inc.

EXISTING WATER SUPPLY SYSTEM

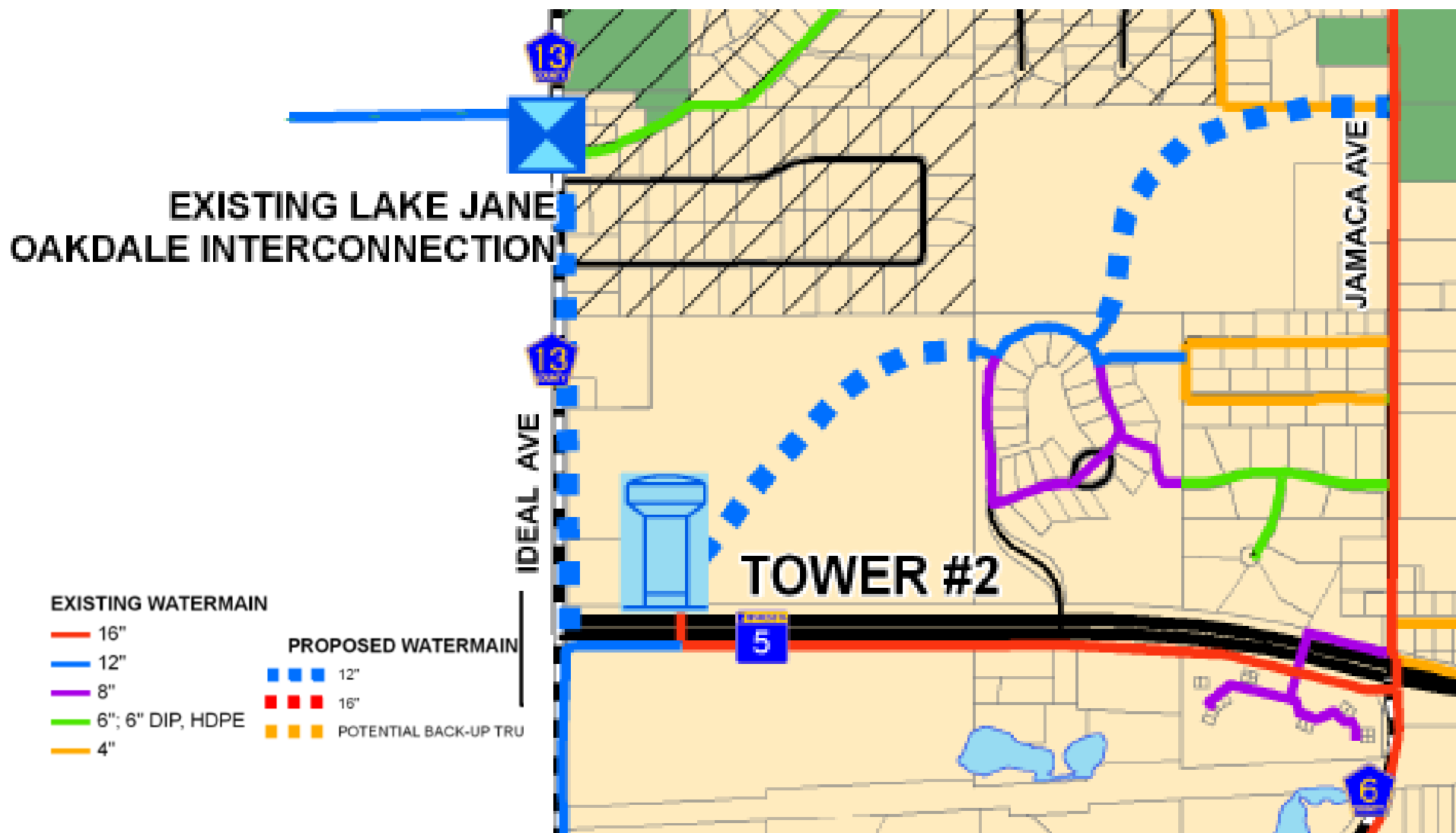


July 1, 2014

ENGINEERING, inc.



PROPOSED WATER SUPPLY SYSTEM – 2030 COMPREHENSIVE PLAN

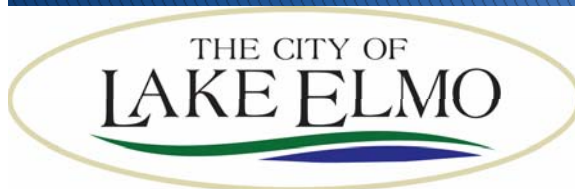


BORDNERS GARNER FARMETTES COST INFORMATION

PRELIMINARY ORDER OF MAGNITUDE

- 47 Benefitting Properties
- Street and Storm Sewer Improvements = \$7,500 per Unit
 - Does not include storm water quality and ponding improvements
 - Does not include easement and right-of-way acquisition
 - Assessment is payable over 10 years.
- Water Improvements = \$9,800 per Unit (plus WAC and private connection into home). Assessment is payable over 15 years.

JULY 1, 2014

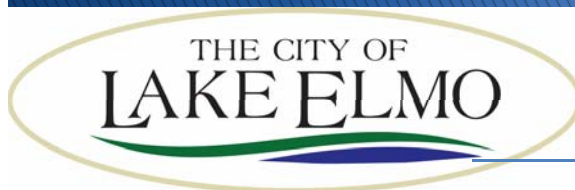


FOCUS ENGINEERING, inc.

KENRIDGE ADDITION – Draft Storm Sewer Improvements



JULY 1, 2014

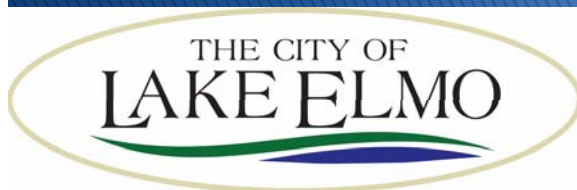


FOCUS ENGINEERING, inc.

37TH STREET NORTH



JULY 1, 2014

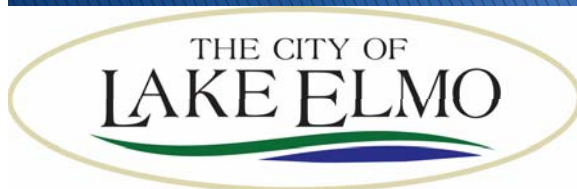


FOCUS ENGINEERING, inc.

36TH STREET NORTH

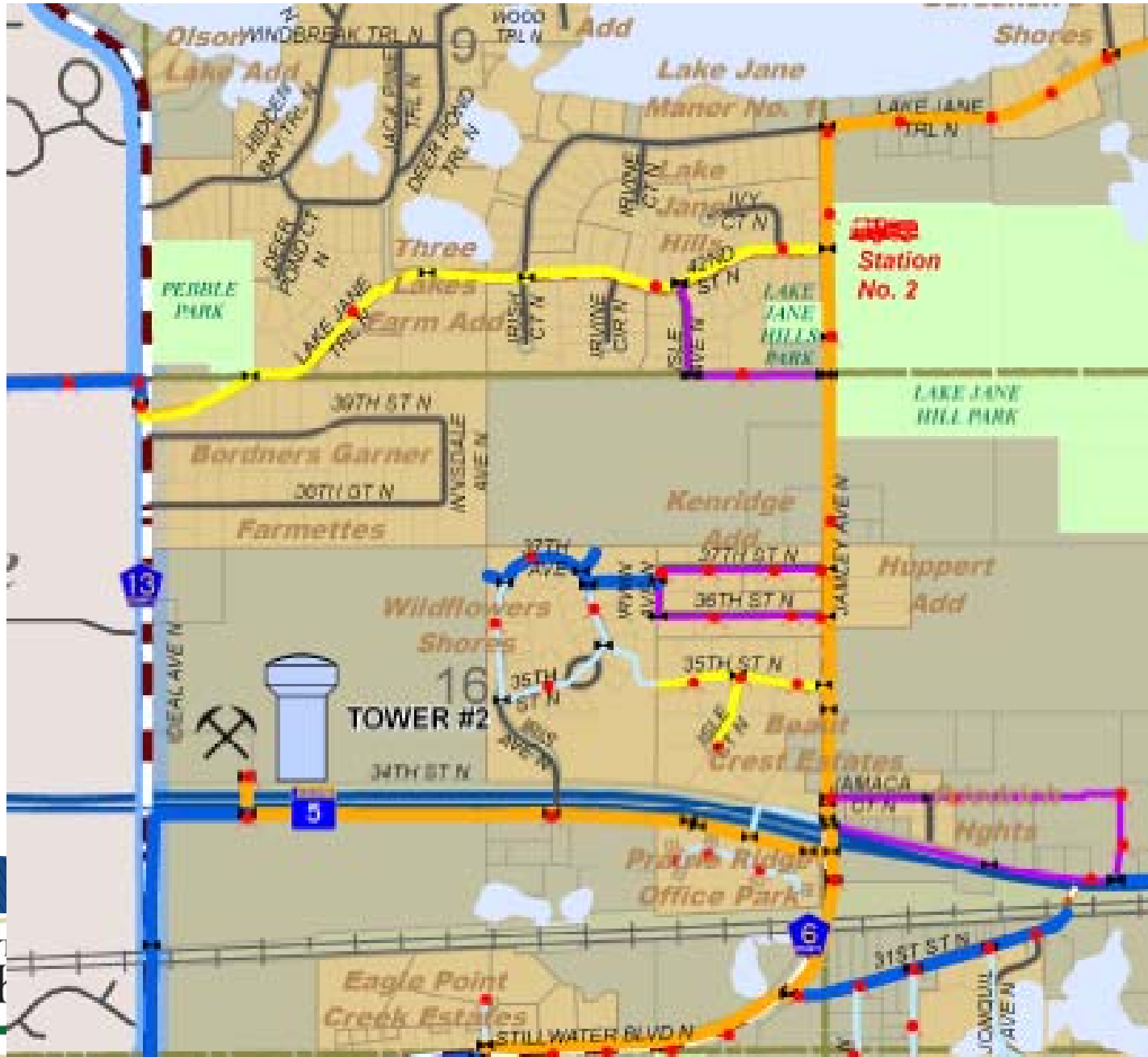


JULY 1, 2014



FOCUS ENGINEERING, inc.

EXISTING WATER SUPPLY SYSTEM



July 1, 2014

ENGINEERING, inc.

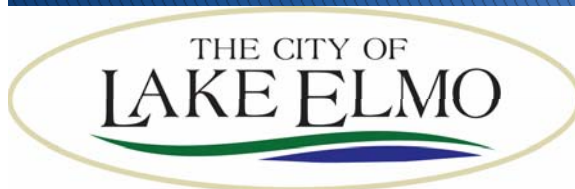


KENRIDGE ADDITION COST INFORMATION

PRELIMINARY ORDER OF MAGNITUDE

- 24 Benefitting Properties
- Street and Storm Sewer Improvements = \$8,000 per Unit
 - Does not include storm water quality and ponding improvements
 - Does not include easement and right-of-way acquisition
- Water Improvements = \$12,000 per Unit (plus WAC and private connection into home)
 - Homes are currently on City water

JULY 1, 2014

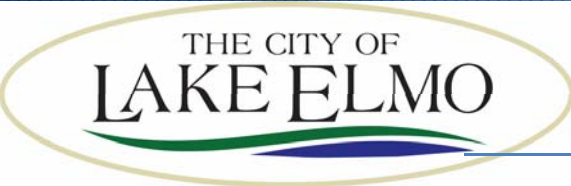


FOCUS ENGINEERING, inc.

KELVIN AVENUE NORTH – RURAL SECTION

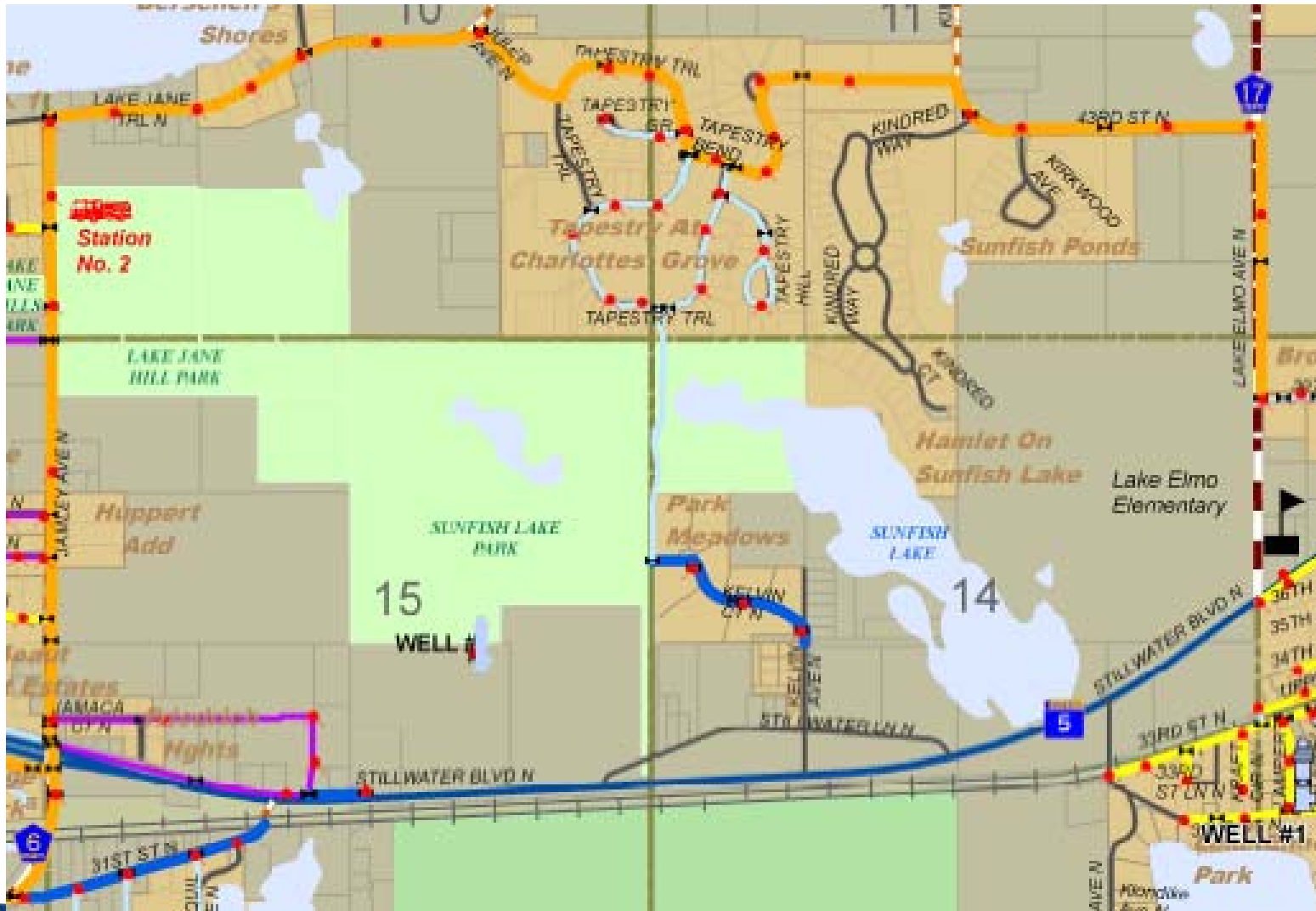


JULY 1, 2014

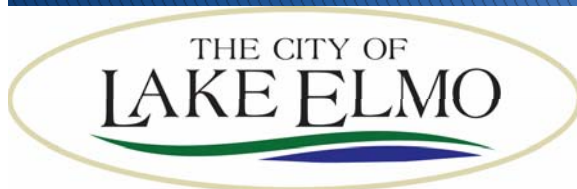


FOCUS ENGINEERING, inc.

EXISTING WATER SUPPLY SYSTEM



JULY 1, 2014



FOCUS ENGINEERING, inc.

PROPOSED WATER SUPPLY SYSTEM – 2030 COMPREHENSIVE PLAN



EXISTING WATERMAIN

- 16"
- 12"
- 8"
- 6"; 6" DIP, HDPE
- 4"

PROPOSED WATERMAIN

- ■ ■ 12"
- ■ ■ 16"
- ■ ■ POTENTIAL BACK-UP TRUNK

JULY 1, 2014

KELVIN AVENUE COST INFORMATION

PRELIMINARY ORDER OF MAGNITUDE

- Street Improvements (Including Concrete Ribbon Curb) = \$5,000 per Unit
 - 18 Benefitting Properties (w / direct driveway access)
 - Includes section between Stillwater Lane and TH 5
 - Includes private road section (north of Kelvin Court)
 - Does not include storm water quality and ponding improvements
 - Does not include easement and right-of-way acquisition
- Water Improvements = \$12,000 per Unit (plus WAC and private connection into home)
 - 14 Benefitting Properties

JULY 1, 2014

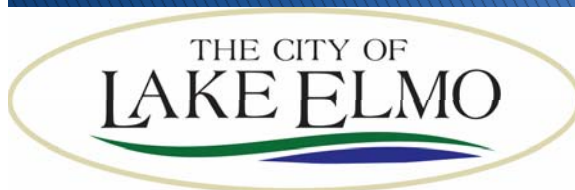


FOCUS ENGINEERING, inc.

RECCOMENDATIONS AND REQUESTED COUNCIL ACTION

- Council is asked to consider Resolution No. 2014-56 Authorizing Preparation of the Feasibility Report for the 2015 Street Improvements.

JULY 1, 2014



FOCUS ENGINEERING, inc.