

**TH 5/Manning Avenue Realignment Alternatives Comparison**

		Concept B	Concept C	Concept C2
<b>All Concepts Equally:</b>	Draw peak hour traffic to Manning	✓	✓	✓
	Improve overall network efficiency	✓	✓	✓
	Allow for future development	✓	✓	✓
	Improve safety	✓	✓	✓
<b>Local Cost Participation:</b>	New Local Road Construction	0.2 miles	0 miles	0 miles
	Right of Way Acquisition	0.8 acres	0 miles	0 miles
	Maintenance (length of new City Street)	0.7 miles	0.5 miles	0.5 miles
	Overall project	Per County Policy	Per County Policy	Per County Policy
<b>Local Access Considerations:</b>	Travel from Fields of St Croix to Village <sup>1</sup>	1.4 miles	1.3 miles	2.5 miles
	Fire Truck response time <sup>2</sup>	9.2 minutes	8.9 minutes	12.5 minutes
	Local property owners	For discussion	For discussion	For discussion

Notes:

- 1 Distance measured along existing/proposed roadways from Lake Elmo Fire Department to approximate center of Fields of St Croix neighborhood.
- 2 Assumes 5 minutes prep for fire truck to begin travel, and then travels an average speed of 20 MPH (must go through several intersections).



# TH 5 REALIGNMENT - CONCEPT B

PROJECT TERMINI  
4 - LANE SECTION  
TO CONTINUE UNDER  
ANOTHER PHASE

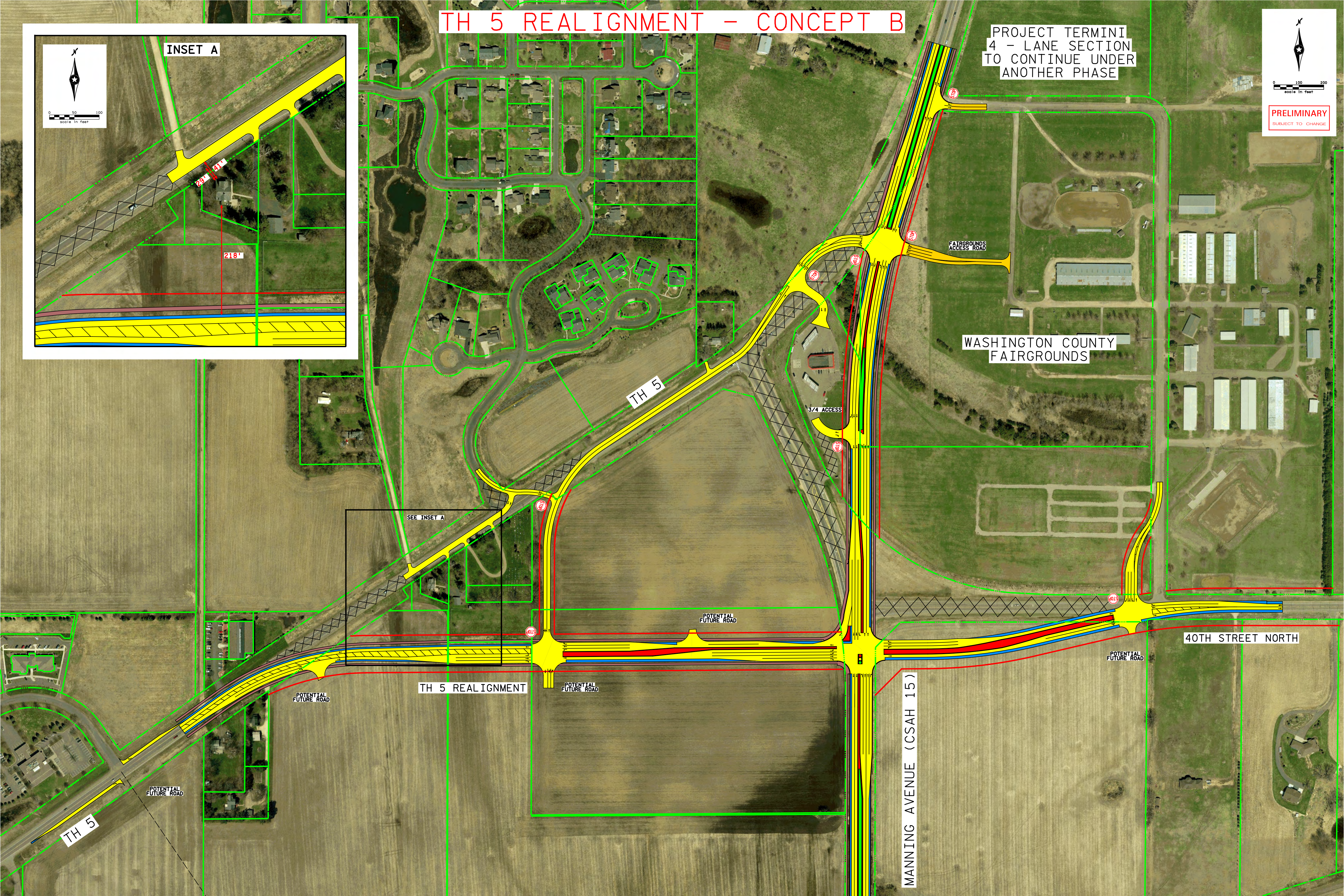
0 100 200  
scale in feet

**PRELIMINARY**  
SUBJECT TO CHANGE

### INSET A

218'

147'



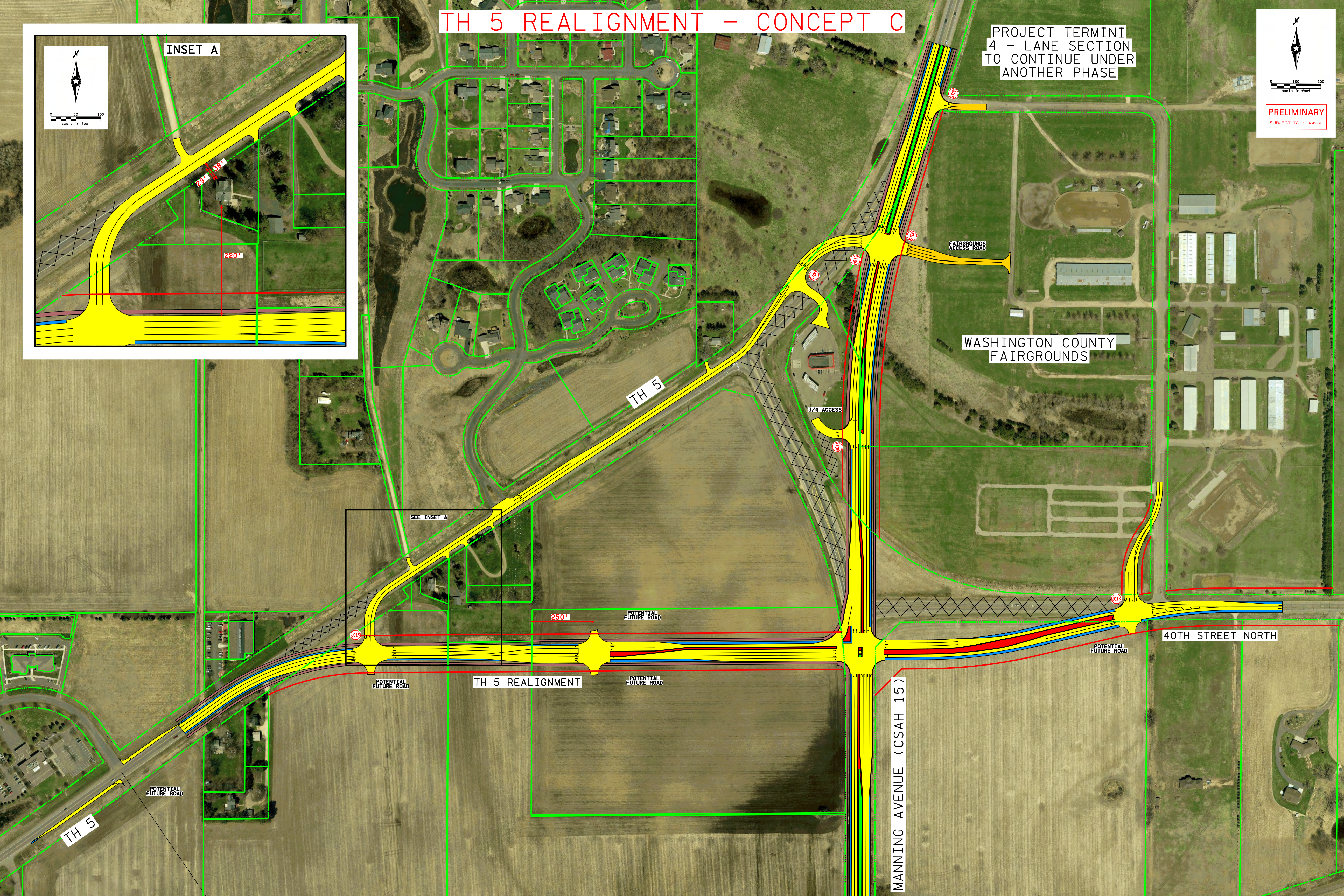
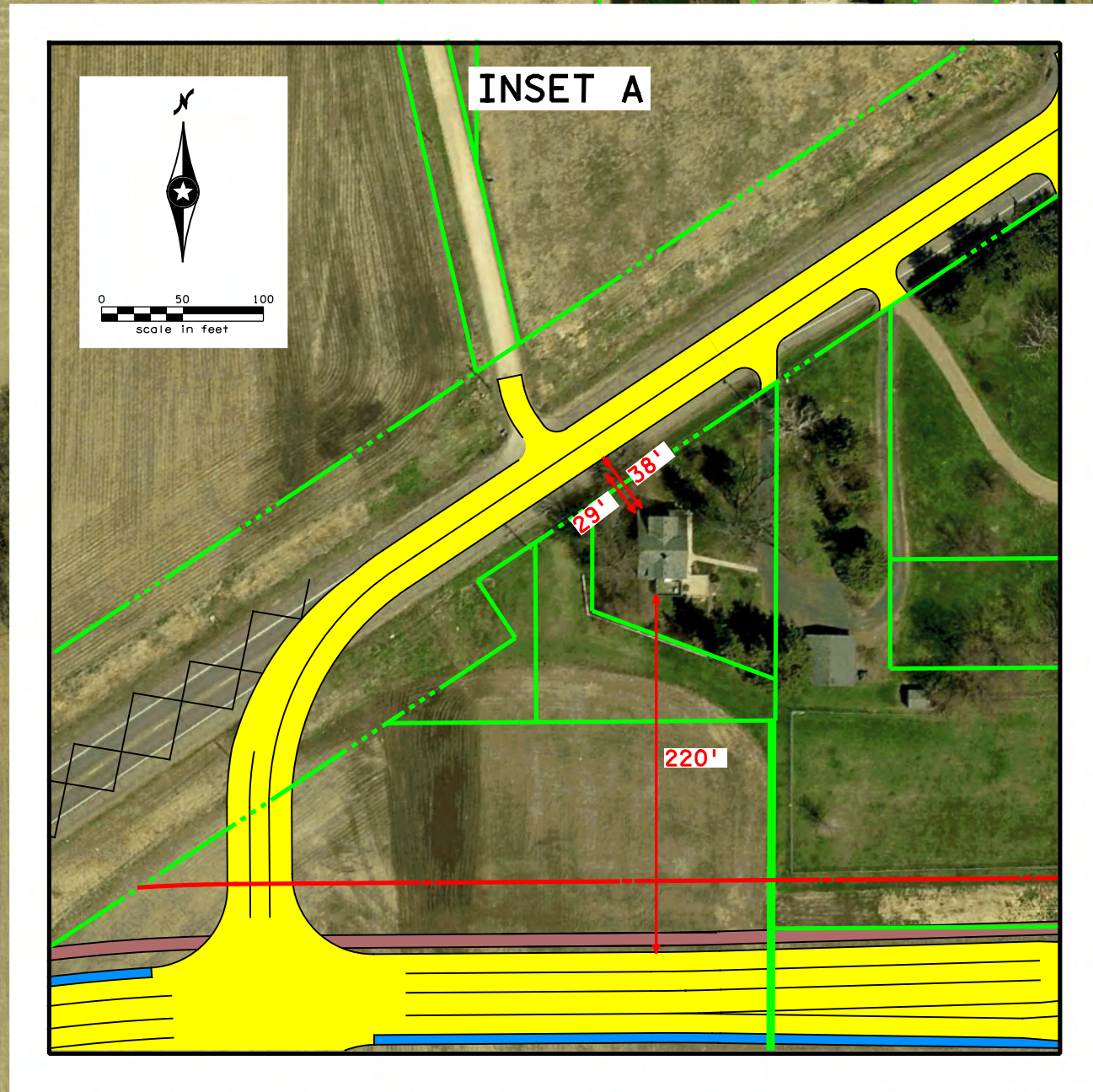


# TH 5 REALIGNMENT - CONCEPT C

PROJECT TERMINI  
4 - LANE SECTION  
TO CONTINUE UNDER  
ANOTHER PHASE

0 100 200  
Scale in feet

**PRELIMINARY**  
SUBJECT TO CHANGE





# TH 5 REALIGNMENT - CONCEPT C2

PROJECT TERMINI  
4 - LANE SECTION  
TO CONTINUE UNDER  
ANOTHER PHASE

0 100 200  
Scale in Feet

**PRELIMINARY**  
SUBJECT TO CHANGE

