

PRELIMINARY: NOT FOR  
CONSTRUCTION

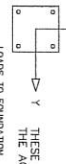
10  
SHEET

DRAWN BY:	KC
DATE:	9/3/2015
JOB NO.:	STANDARD
REVISION:	
BUILDING TYPE:	RG20X24M-P4
PROJECT NAME:	50-90-30

Elevation

**ICON**  
Shelter Systems Inc  
DISTINCTIVE STEEL SHELTERS  
WWW.ICONSHelters.COM  
CORPORATE TOWER COR SHELTER  
5700 W. 130th St.  
1455 LINCOLN AVE  
HOLLAND MI 49423  
616.396.0919  
800.748.0985  
616.396.0944 FX

Z (INSIDE OF BUILDING)



THESE FOUNDATION LOADS ARE FOR ESTIMATING PURPOSE ONLY.  
THE ACTUAL LOADS WILL BE DETERMINED IN THE FINAL ENGINEERING

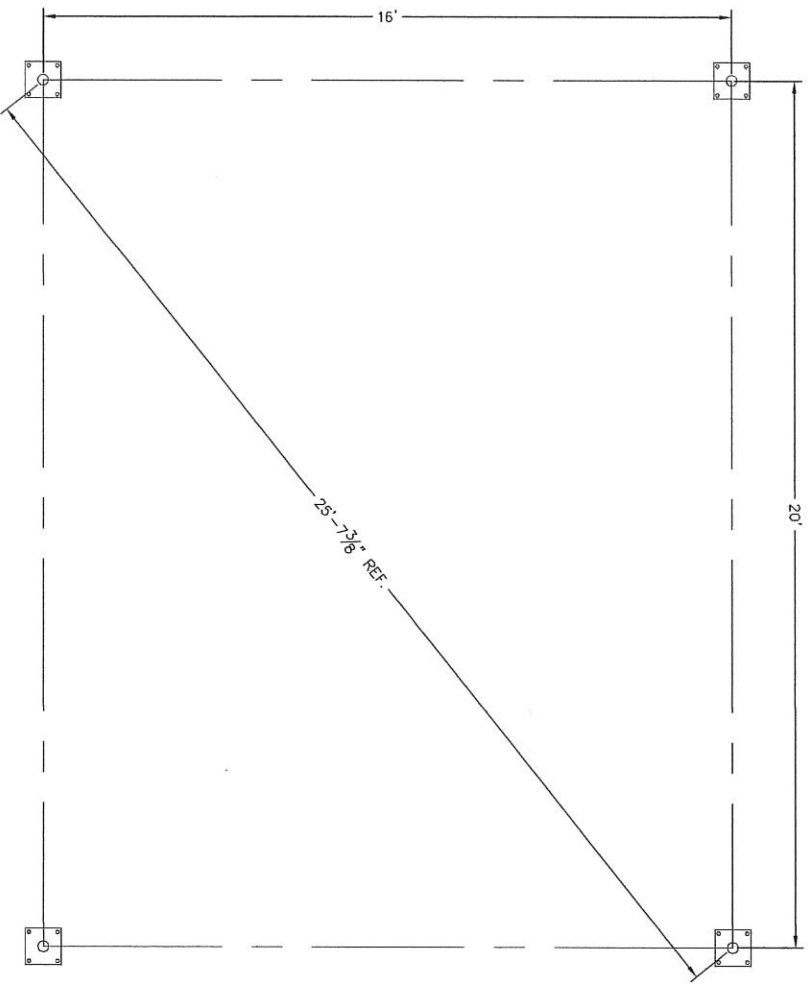
LOAD COMBINATION	FOUNDATION LOADS				
	AXIAL (F <sub>x</sub> )	SHEAR (F <sub>y</sub> )	SHEAR (F <sub>z</sub> )	MOMENT (M <sub>y</sub> )	MOMENT (M <sub>z</sub> )
DL	1.17	0.10	0.05	-1.99	3.30
SL	5.30	0.84	0.22	-8.32	29.17
W-UP/LIFT	-1.40	0.57	-0.28	10.91	35.39
W-FY	1.41	-0.58	0.05	-2.01	-35.38
W-FZ	0.30	-0.01	0.47	-27.51	-0.11
E-FY	-0.07	-0.20	-0.01	0.39	-15.82
E-FZ	-0.13	0.00	-0.20	11.48	0.02

**NOTES**

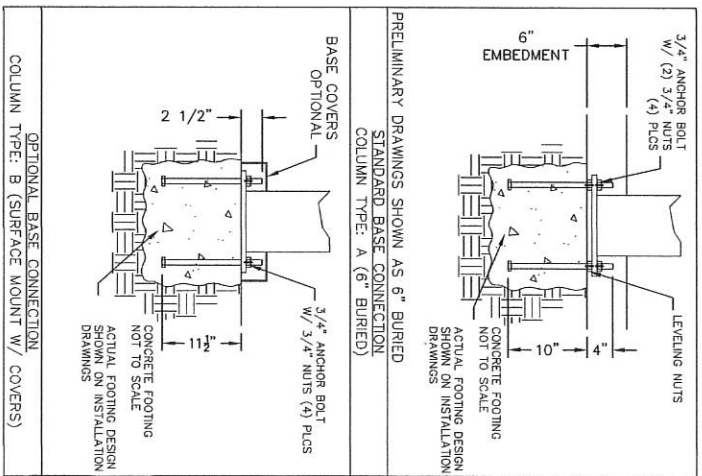
- TABLE SHOWS UNFACTORED SERVICE LOADS
- FOUNDATION DESIGN TO BE PERFORMED BY ICON SHELTER SYSTEMS INC.
- A LICENSED ENGINEER FAMILIAR WITH SOIL CONDITIONS AT CONSTRUCTION SITE
- MUST PERFORM A FOUNDATION DESIGN, AS AN OPEN STRUCTURE.
- THE STRUCTURE HAS BEEN ENGINEERED AS AN OPEN STRUCTURE.
- WIND SPEED EFFECTS SHALL BE DETERMINED FOR THE STRUCTURE IS TO BE ENCLOSED.
- COORDINATES ARE LOCAL TO THE COLUMN

**DEFINITIONS:**

- DL = SERVICE LEVEL DEAD LOAD REACTION WITH THE GREATEST AXIAL LOAD
- SL = SERVICE LEVEL SNOW LOAD REACTION WITH THE GREATEST AXIAL LOAD
- W-UL = SERVICE LEVEL WIND LOAD REACTION WITH THE GREATEST UPLIFT LOAD
- W-FY = SERVICE LEVEL WIND LOAD REACTION WITH THE GREATEST MAGNITUDE OF SHEAR IN THE LOCAL Y DIRECTION
- W-FZ = SERVICE LEVEL WIND LOAD REACTION WITH THE GREATEST MAGNITUDE OF SHEAR IN THE LOCAL Z DIRECTION
- E-FY = SERVICE LEVEL SEISMIC LOAD REACTION WITH THE GREATEST MAGNITUDE OF SHEAR IN THE LOCAL Y DIRECTION
- E-FZ = SERVICE LEVEL SEISMIC LOAD REACTION WITH THE GREATEST MAGNITUDE OF SHEAR IN THE LOCAL Z DIRECTION



PRELIMINARY: NOT FOR CONSTRUCTION

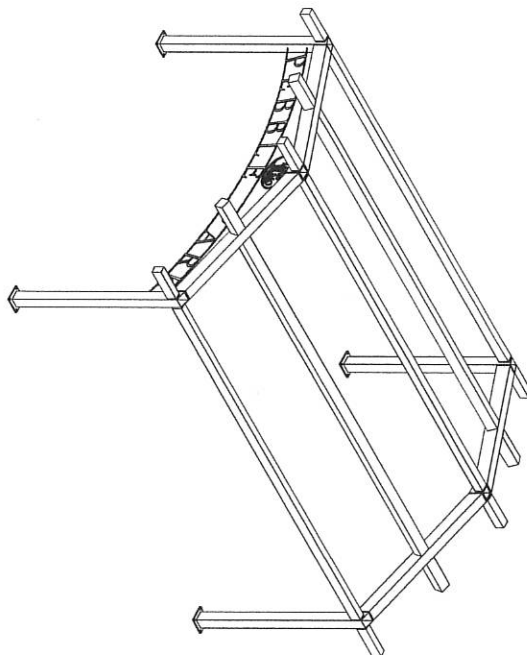
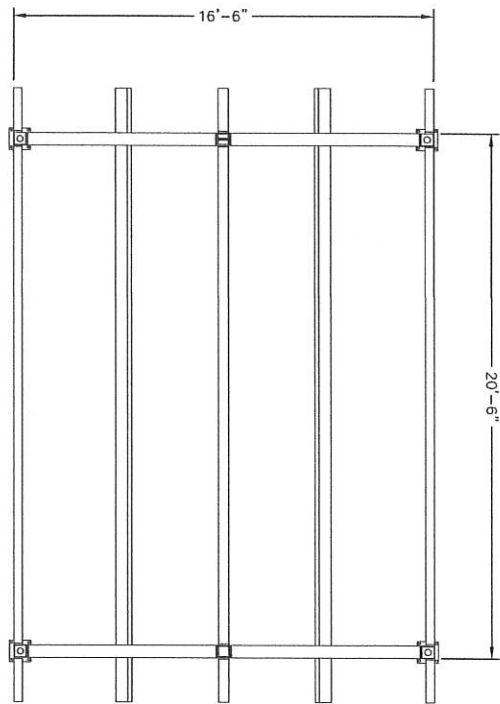
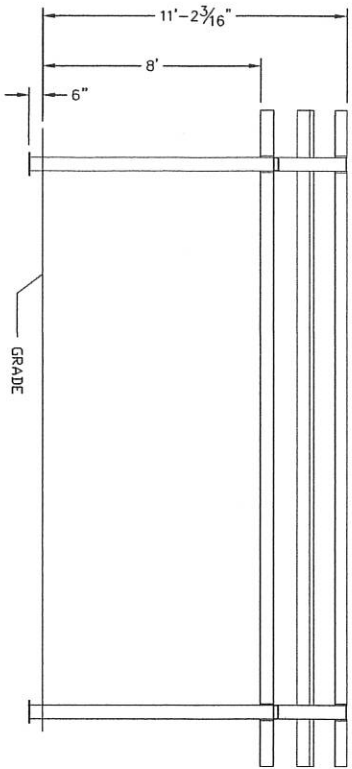


<p>PRELIMINARY DRAWINGS SHOWN AS 6" BURIED STANDARD BASE CONNECTION COLUMN TYPE: A (6" BURIED)</p>	<p>OPTIONAL BASE CONNECTION COLUMN TYPE: B (SURFACE MOUNT W/ COVERS)</p>
<p>BASE COVERS OPTIONAL</p>	<p>OPTIONAL BASE CONNECTION COLUMN TYPE: B (SURFACE MOUNT W/ COVERS)</p>
<p>3/4" ANCHOR BOLT W/ (2) 3/4" NUTS (4) PLUGS</p>	<p>3/4" ANCHOR BOLT W/ 3/4" NUTS (4) PLUGS</p>
<p>CONCRETE FOOTING</p>	<p>CONCRETE FOOTING</p>
<p>LEVELING NUTS</p>	<p>CONCRETE FOOTING</p>
<p>6" EMBEDMENT</p>	<p>CONCRETE FOOTING</p>
<p>10"</p>	<p>CONCRETE FOOTING</p>
<p>4"</p>	<p>CONCRETE FOOTING</p>
<p>2 1/2"</p>	<p>CONCRETE FOOTING</p>
<p>1 1/4"</p>	<p>CONCRETE FOOTING</p>

Anchor Bolt Layout

**ICON Shelter Systems Inc**  
 DISTRICT OFFICE: 1431 LINCOLN AVE  
 FOLLAND, MI 49633  
 616.386.0919  
 800.738.0885  
 616.396.0944 FX  
 WWW.ICONHELTERS.COM  
 COPYRIGHT 2014, ICON SHELTER SYSTEMS, INC.

DRAWN BY: KC	DATE: 9/3/2015
JOB NO.: STANDARD	REVISION:
BUILDING TYPE: RG20X24M-P4	PROJECT NAME: 50-90-30
<p><b>SHEET 20</b></p>	



PRELIMINARY: NOT FOR  
CONSTRUCTION

ALL STRUCTURAL COMPONENTS WILL BE:  
 TUBE: ASTM A500 GRADE B  
 PLATE: ASTM A36  
 BOLTS: ASTM A325  
 NUTS: ASTM A563  
 WELDING: GMAW

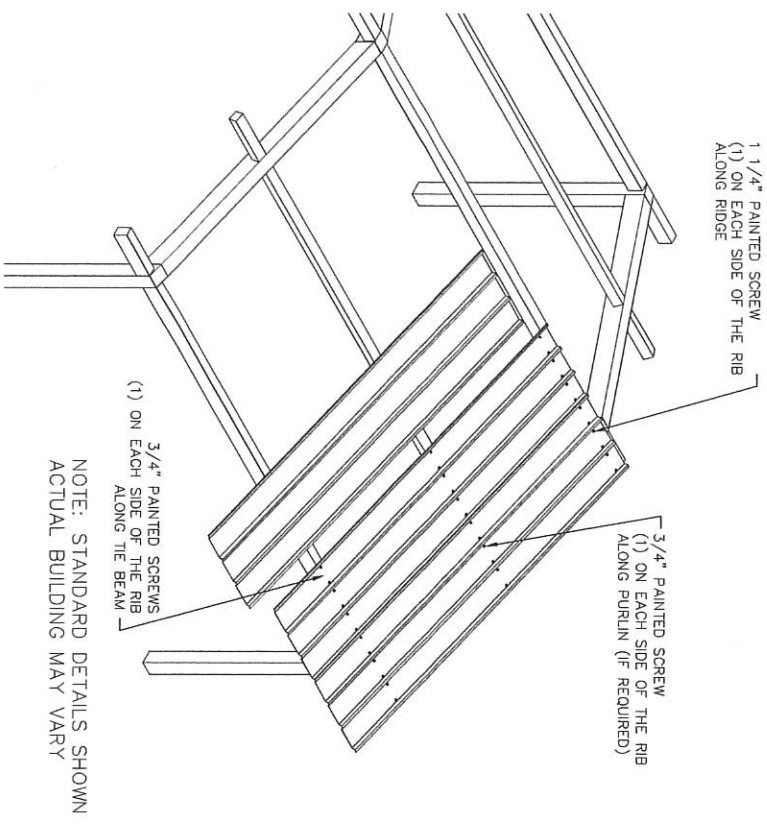
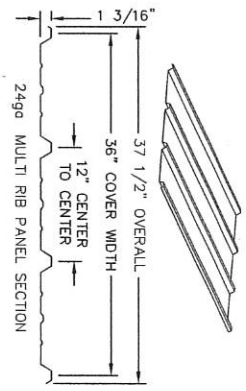
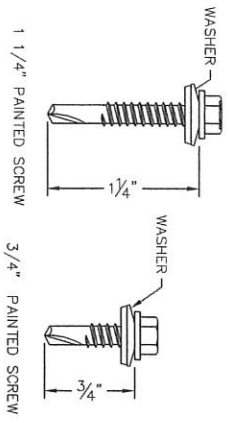
NOTE:  
 COLUMN SIZE: HSS 6x6x3/16

SHEET  
3.0

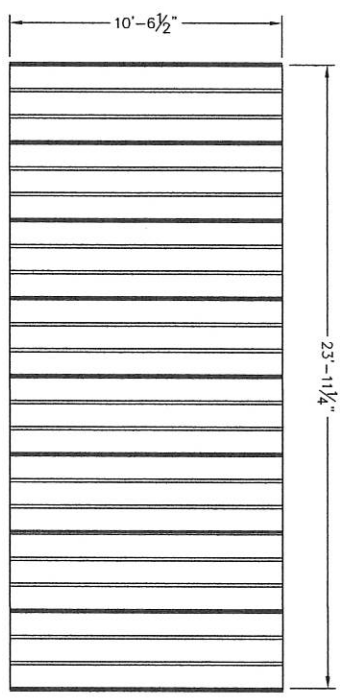
DRAWN BY:	KC
DATE:	9/3/2015
JOB NO.:	STANDARD
REVISION:	
BUILDING TYPE:	RG20X24M-P4
PROJECT NAME:	50-90-30

Frame

**ICON**  
 Shelter Systems Inc  
 DISTINCTIVE STEEL SHELTERS  
 WWW.ICONSHELTERS.COM  
 COPYRIGHT 2014 BY ICON SHELTERS  
 1435 LINCOLN AVE  
 HOLLAND, MI 49423  
 616.396.0919  
 800.748.0985  
 616.396.0944 FX



NOTE: STANDARD DETAILS SHOWN  
ACTUAL BUILDING MAY VARY



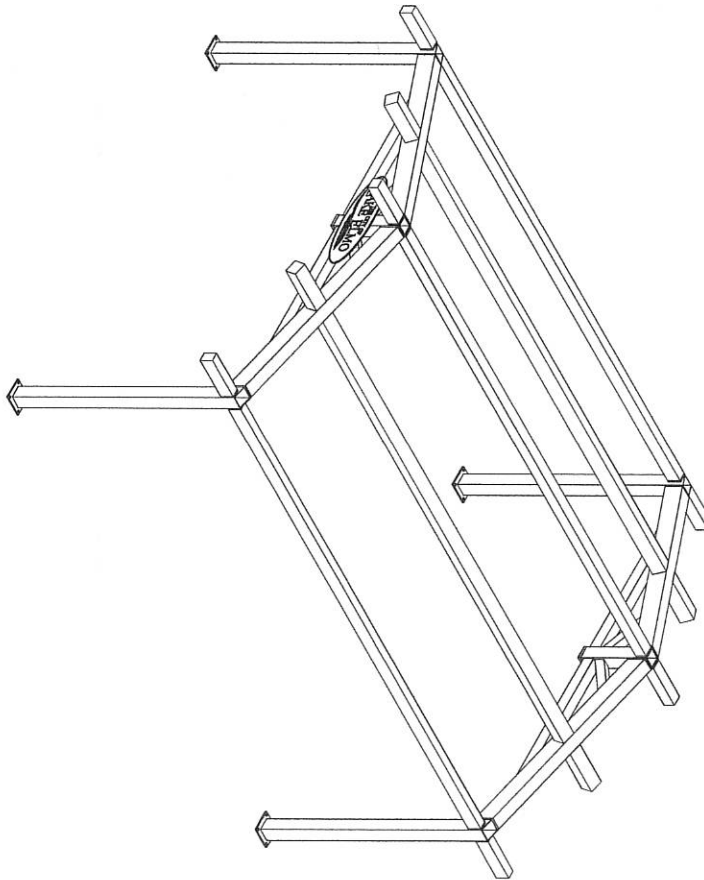
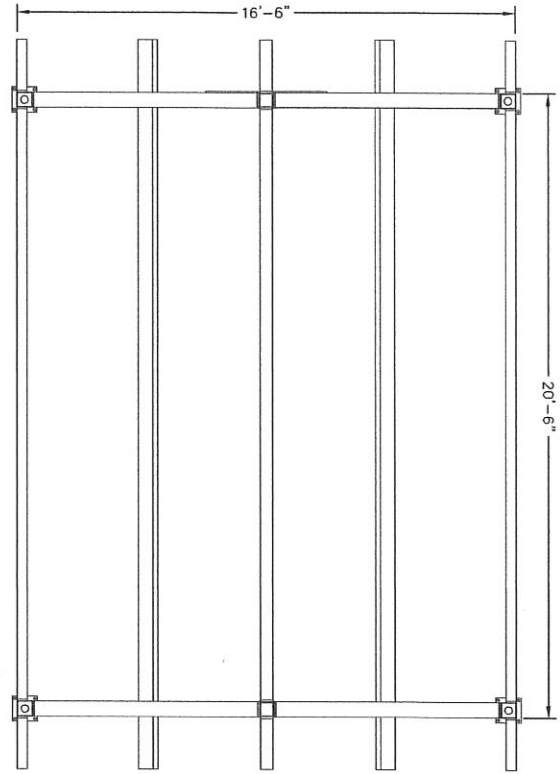
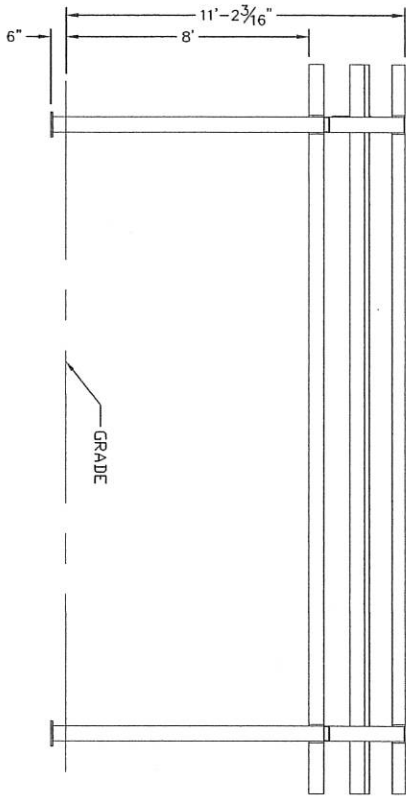
PRELIMINARY: NOT FOR  
CONSTRUCTION

SHEET  
4.0

DRAWN BY:	KC
DATE:	9/3/2015
JOB NO.:	STANDARD
REVISION:	
BUILDING TYPE:	RG20X24M-P4
PROJECT NAME:	50-90-30

Roof Layout

**ICON**  
Shelter Systems Inc  
DISTINCTIVE STEEL SHELTERS  
WWW.ICONSHELTERS.COM  
COPYRIGHT 2014, ICON SHELTER  
1433 LINDCOLN AVE  
HOLLAND, MI 49423  
616.396.0919  
800.748.0985  
616.396.0944 FAX



PRELIMINARY: NOT FOR  
CONSTRUCTION

ALL STRUCTURAL COMPONENTS WILL BE:  
 TUBE: ASTM A500 GRADE B  
 PLATE: ASTM A36  
 BOLTS: ASTM A325  
 NUTS: ASTM A563  
 WELDING: GMAW

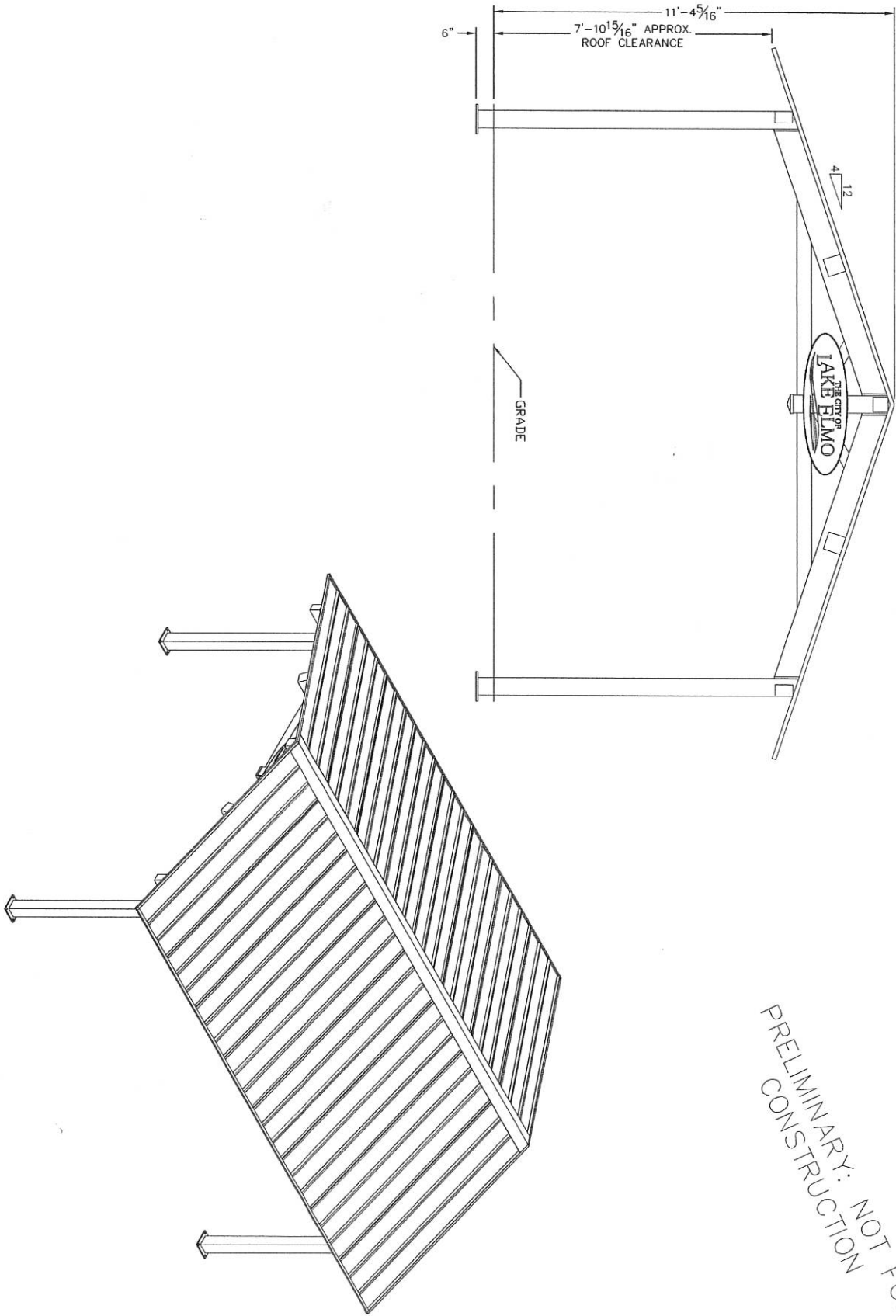
NOTE:  
 COLUMN SIZE: HSS 6x6x3/16

SHEET  
3.0

DRAWN BY: AP
DATE: 7/28/15
JOB NO.:
STANDARD
REVISION:
BUILDING TYPE: RG20X24M-P4
PROJECT NAME:

Frame

**ICON**  
 Shelter Systems Inc  
 DISTRICTIVE APTEL SHELTERS  
 WWW.ICONSHelters.COM  
 COPYRIGHT 2014, ICON SHELTERS  
 5701 25th Ave.  
 1435 LINCOLN AVE  
 HOLLAND, MI 49423  
 616.396.0919  
 800.748.0985  
 616.396.0944 FX



PRELIMINARY: NOT FOR  
CONSTRUCTION

SHEET  
10

DRAWN BY:	AP
DATE:	7/28/15
JOB NO.:	STANDARD
REVISION:	
BUILDING TYPE:	RG20X24M-P4
PROJECT NAME:	

Elevation

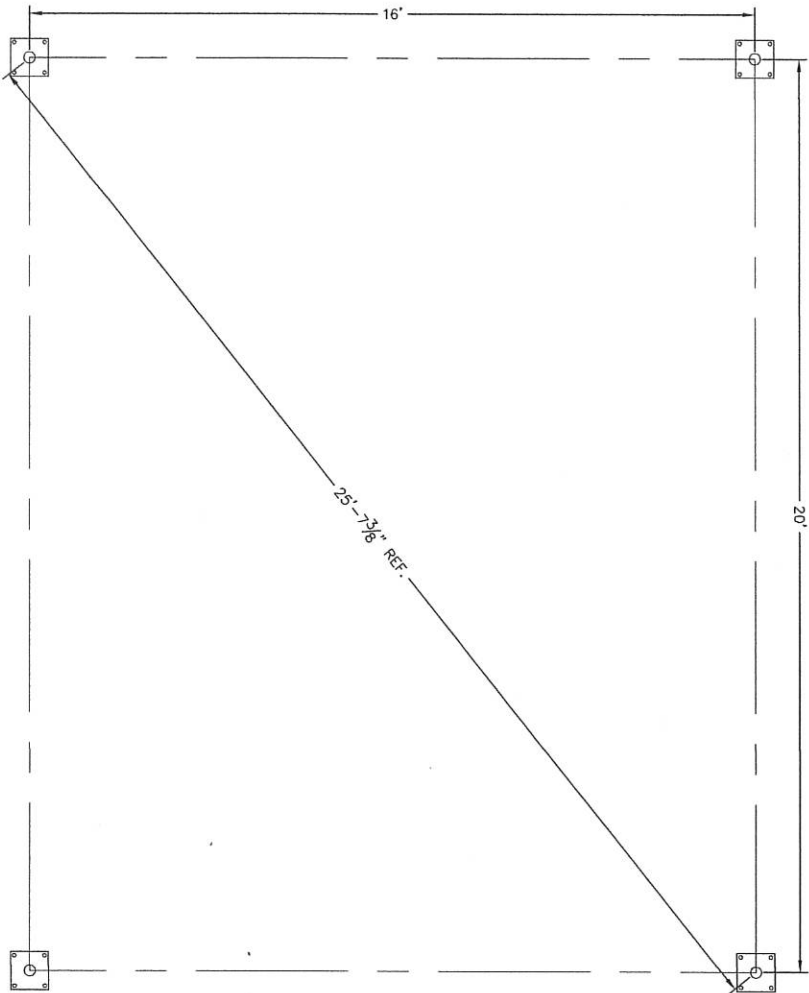
**ICON**  
Shelter Systems Inc  
DISTINGUISHING STEEL SHELTERS  
WWW.ICONSHELTERS.COM  
COPYRIGHT 2014, ICON SHELTER  
SYSTEMS, INC.  
1435 LINCOLN AVE  
HOLLAND, MI 49423  
616.396.0919  
800.748.0985  
616.396.0944 FX

Z (INSIDE OF BUILDING)

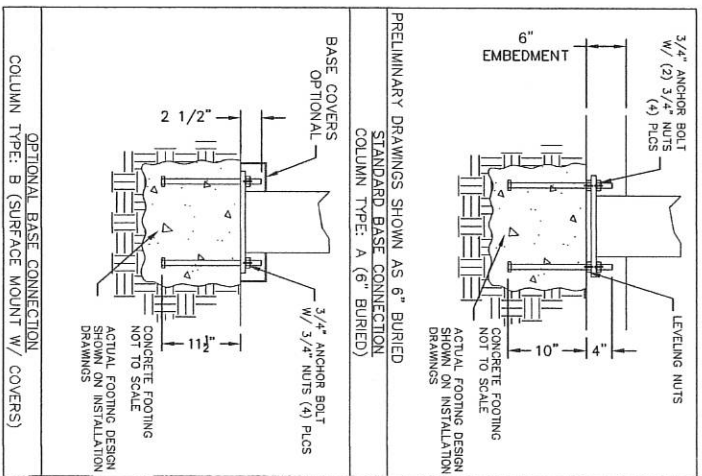
THESE FOUNDATION LOADS ARE FOR ESTIMATING PURPOSE ONLY. THE ACTUAL LOADS WILL BE DETERMINED IN THE FINAL ENGINEERING

LOADS TO FOOTING	FOUNDATION LOADS				
	AXIAL (F <sub>2</sub> )	SHEAR (F <sub>2</sub> )	SHEAR (F <sub>1</sub> )	MOMENT (M <sub>2</sub> )	MOMENT (M <sub>1</sub> )
DL	1.17	0.10	0.05	-1.99	3.30
SL	5.30	0.84	0.22	-8.32	29.17
W-UP/LIFT	-1.40	0.57	-0.28	10.91	35.39
W-FY	1.41	-0.58	0.05	-2.01	-35.36
W-FZ	0.30	-0.01	0.47	-27.51	-0.11
E-FY	-0.07	-0.20	-0.01	0.39	-15.92
E-FZ	-0.13	0.00	-0.20	11.48	0.02

- NOTES**
- TABLE SHOWS UNFACTORED SERVICE LOADS
  - FOUNDATION DESIGN TO BE COMPLETED BY ICON SHELTER SYSTEMS INC.
  - A LICENSED ENGINEER FAMILIAR WITH SOIL CONDITIONS AT CONSTRUCTION SITE MUST PERFORM A FOUNDATION DESIGN.
  - THE STRUCTURE HAS BEEN ENGINEERED AS AN OPEN STRUCTURE.
  - FOUNDATION DESIGN SHALL BE BASED ON THE STRUCTURE IS TO BE ENCLOSED.
  - COORDINATES ARE LOCAL TO THE COLUMN.
- DEFINITIONS:**
- DL = SERVICE LEVEL DEAD LOAD REACTION WITH THE GREATEST AXIAL LOAD
  - SL = SERVICE LEVEL SNOW LOAD REACTION WITH THE GREATEST AXIAL LOAD
  - W-UL = SERVICE LEVEL WIND LOAD REACTION WITH THE GREATEST UPLIFT LOAD
  - W-Y = SERVICE LEVEL WIND LOAD REACTION WITH THE GREATEST MAGNITUDE OF SHEAR IN THE LOCAL Y DIRECTION
  - W-FY = SERVICE LEVEL WIND LOAD REACTION WITH THE GREATEST SHEAR VALUE ACTING IN THE SAME DIRECTION AS THE DL SHEAR LOAD
  - W-FZ = SERVICE LEVEL WIND LOAD REACTION WITH THE GREATEST MAGNITUDE OF SHEAR IN THE LOCAL Z DIRECTION
  - E-FY = SERVICE LEVEL EARTH QUAKE REACTION WITH THE GREATEST MAGNITUDE OF SHEAR IN THE LOCAL Y DIRECTION
  - E-FZ = SERVICE LEVEL EARTH QUAKE REACTION WITH THE GREATEST MAGNITUDE OF SHEAR IN THE LOCAL Z DIRECTION



PRELIMINARY: NOT FOR CONSTRUCTION



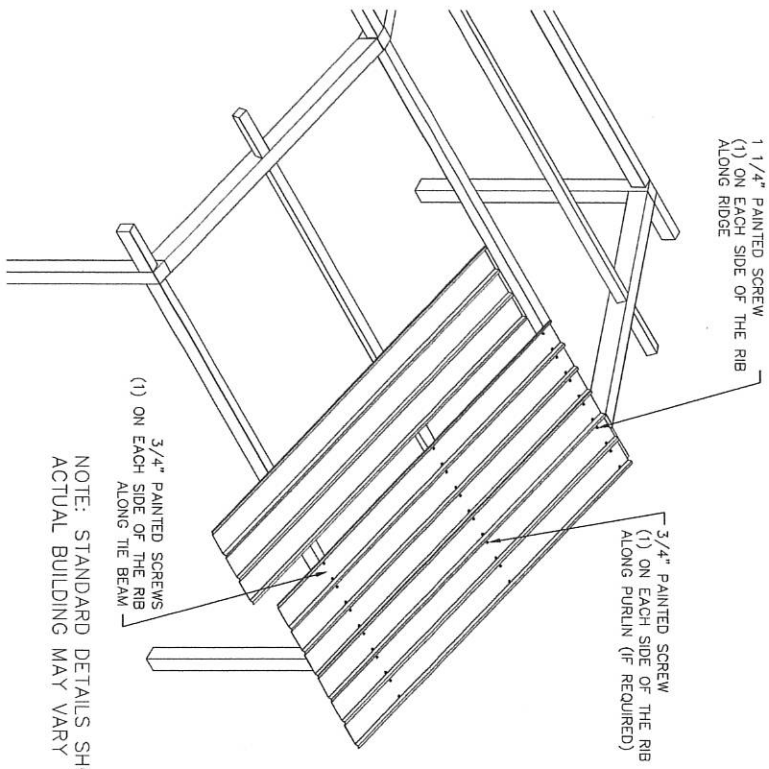
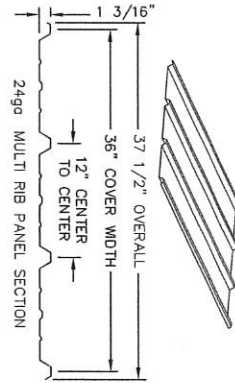
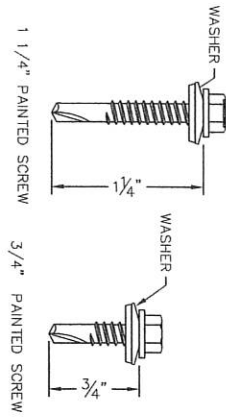
**Anchor Bolt Layout**

DRAWN BY: AP  
 DATE: 7/28/15  
 JOB NO.: STANDARD  
 REVISION:  
 BUILDING TYPE: RG20X24M-P4  
 PROJECT NAME:

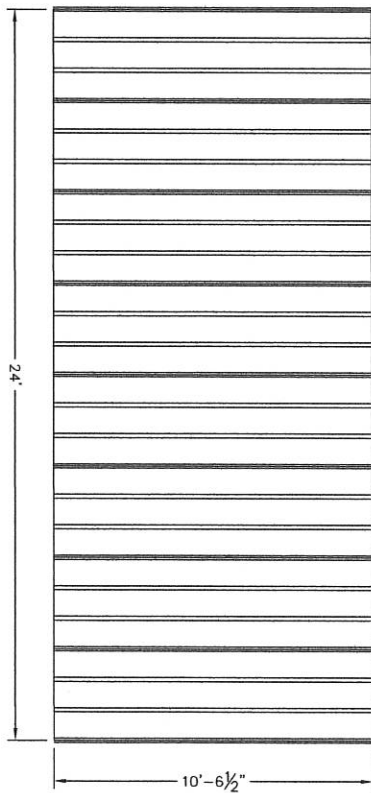
**OPTIONAL BASE CONNECTION COLUMN TYPE: B (SURFACE MOUNT W/ COVERS)**

**20 SHEET**

**ICON Shelter Systems Inc**  
 DISTRICT STEEL SHELTERS  
 WWW.ICONSHelters.COM  
 COPYRIGHT 2014 ICON SHELTER SYSTEMS INC.  
 1435 LINCOLN AVE  
 HOLLAND MI, 49423  
 616.386.0919  
 800.748.0985  
 616.390.0944 FX



NOTE: STANDARD DETAILS SHOWN  
ACTUAL BUILDING MAY VARY



PRELIMINARY: NOT FOR  
CONSTRUCTION

SHEET  
40

DRAWN BY:	AP
DATE:	7/28/15
JOB NO.:	STANDARD
REVISION:	
BUILDING TYPE:	RG20X24M-P4
PROJECT NAME:	

Roof Layout

**ICON**  
Shelter Systems Inc  
DISTINCTIVE STEEL SHELTERS  
WWW.ICONSHELTERS.COM  
CORPORATE 200, P.O. BOX 200  
STURGEON MOUNTAIN, CO 80449  
1433 LINCOLN AVE.  
HOLLAND, MI 49423  
616.396.0910  
800.748.0985  
616.396.0944 FX