



MAYOR AND COUNCIL COMMUNICATION

DATE: May 17, 2016

REGULAR

ITEM #: 25

MOTION

AGENDA ITEM: Library Parking Lot

SUBMITTED BY: Kristina Handt, City Administrator

BACKGROUND:

The Library Board has been working on a parking lot design since last fall. They have vetted a couple different designs and settled on the concept B plan that is included in your packet. Brett Emmons and Library Director Nate Deprey met with City staff to discuss the process to move forward on May 10th.

ISSUE BEFORE COUNCIL:

Would the city cost share on the non-motorized portions of the project – sidewalks, planning for connection along north side of building, etc.? Would the City cost share in the overall project?

PROPOSAL DETAILS/ANALYSIS:

The library board is pursuing a design of the parking lot that will be a paved parking area along with green infrastructure features that will both improve water quality/quantity and downtown aesthetics/connectivity. They would like to promote & enhance the pedestrian/bike connectivity between Lk Elmo Ave. downtown and areas to the east (Lions Park, future senior housing, future development), as envisioned in the last downtown vision documents.

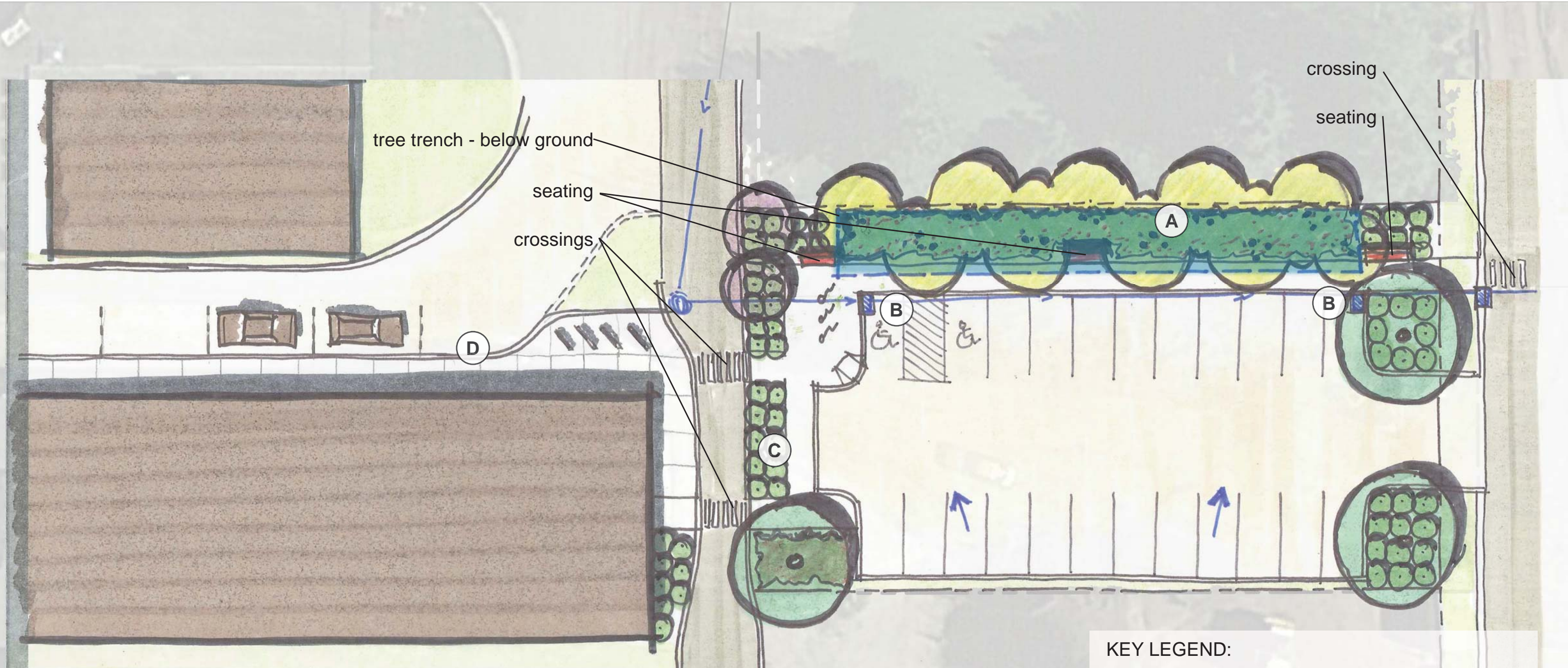
Since the Library Board feels the parking lot really does serve as a broader community resource for parking in the downtown area. So they would also like to request the city share in the cost of the parking lot as part of enhancing the downtown park users and businesses.

FISCAL IMPACT:

The estimated project costs are not known at this time but may be available at the meeting.

OPTIONS:

- 1) Agree to cost share in the entire project
- 2) Agree to cost share for non-motorized portions of the project such as the sidewalk and connection along the north of the building.
- 3) Do not agree to cost share



Revised parking lot and entry drive to capture stormwater and create enhance pedestrian environment. A tree trench will capture and store stormwater for infiltration and reuse by landscaping above.

- Approx. 1,700 cf + of treatment volume in tree trench
- Pedestrian connection from Lake Elmo Ave. to Lion's Park
- Potential to capture adjacent streets
- Benches, lighting, and furnishings improve pedestrian areas

KEY LEGEND:

- A** tree trench filters and cools runoff and provides irrigation for landscaping
- B** pretreatment catch basins protect tree trench and improves maintenance
- C** additional landscaping for traffic calming and aesthetics
- D** walkway, additional library parking, and bike racks enhance pedestrian connections

SCALE: 1"=20'
 0' 5' 10' 20' 40'



Parcel ID: 1302921230054

Parcel Address:
3537 LAKE ELMO AVE N, CITY OF LAKE ELMO



**MAP FOR REFERENCE ONLY
NOT A LEGAL DOCUMENT**