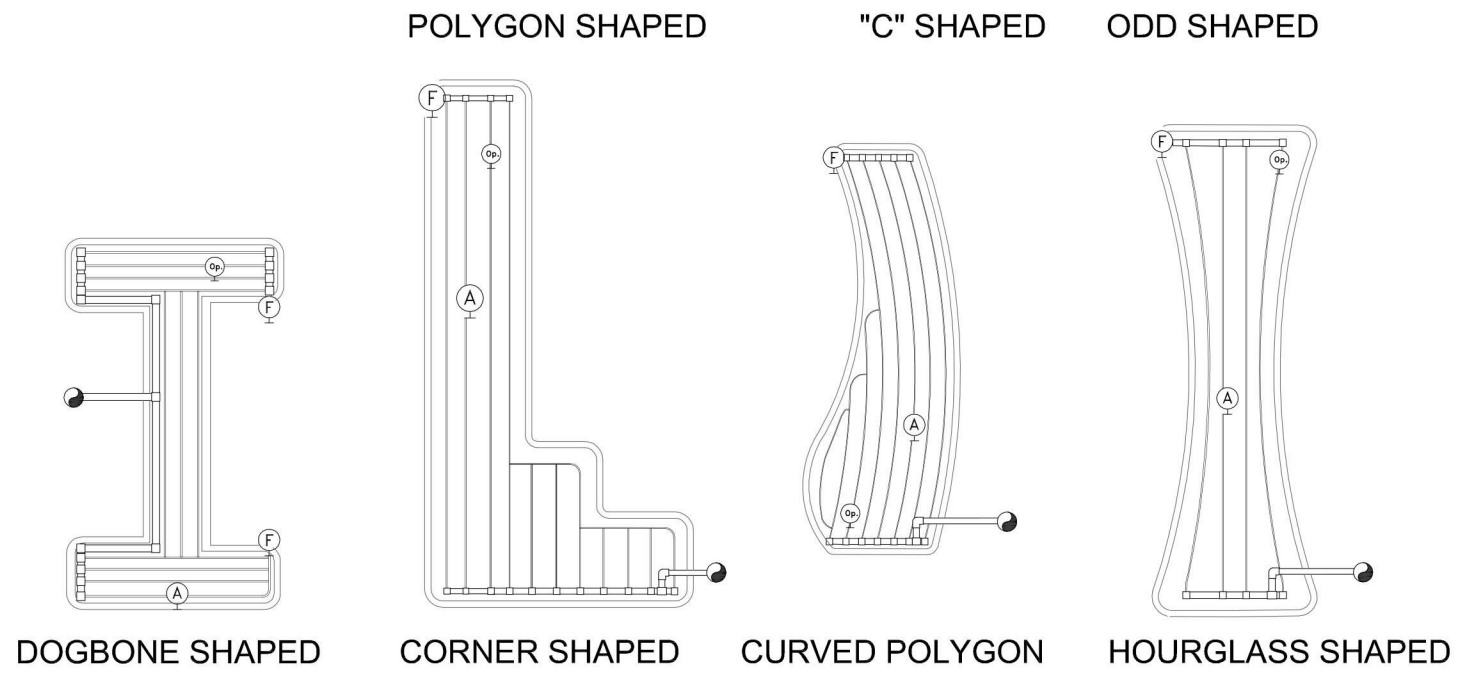
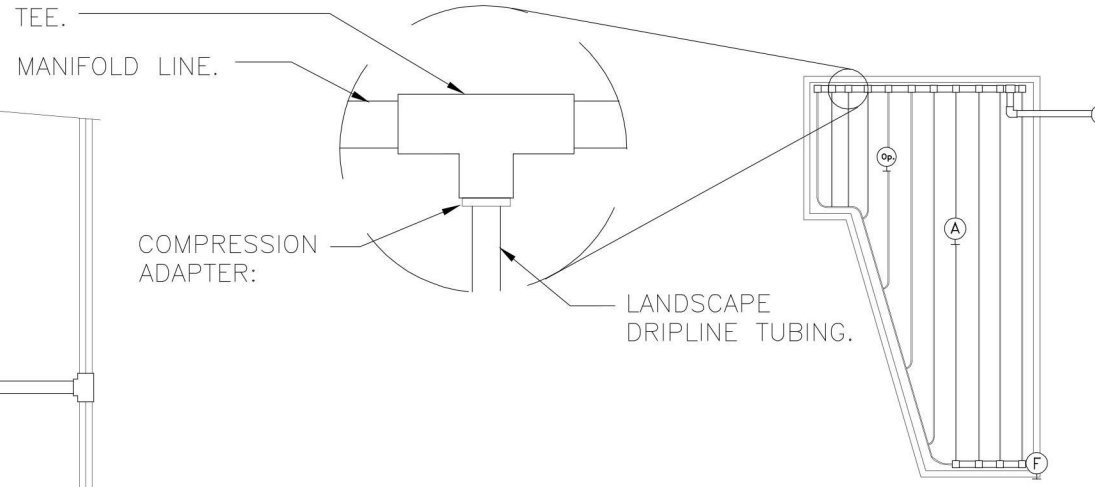
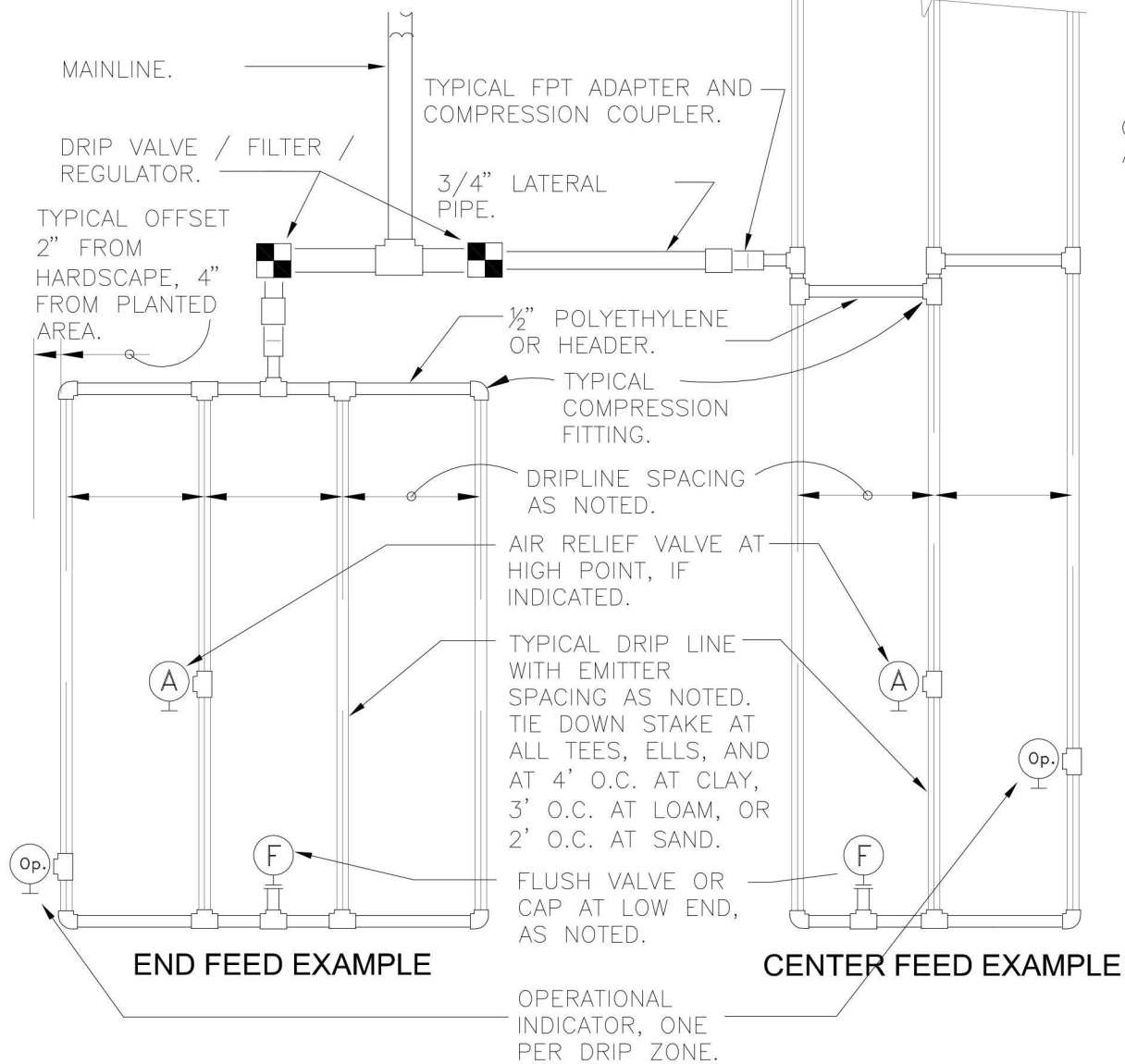
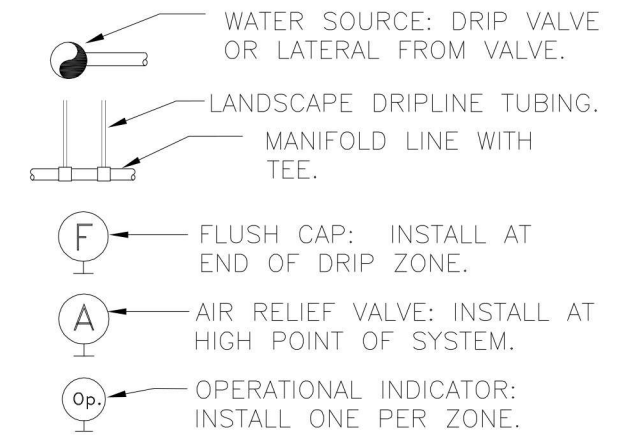


MAXIMUM FLOW PER ZONE		
	MAX GPM	PSI LOSS
SCHEDULE 40 PVC HEADER SIZE		
1/2"	4.7 GPM	7.7 PSI
3/4"	8.3 GPM	5.6 PSI
1"	13.5 GPM	4.2 PSI
1-1/2"	33.9 GPM	2.9 PSI
2"	52.4 GPM	1.9 PSI
POLY PIPE HEADER SIZE		
1/2"	4.7 GPM	8.8 PSI
3/4"	8.3 GPM	6.3 PSI
1"	13.5 GPM	4.8 PSI
1-1/2"	31.8 GPM	2.9 PSI
2"	52.4 GPM	2.2 PSI

- SLOPED CONDITION NOTE:
1. DRIPLINE LATERALS SHOULD FOLLOW THE CONTOURS OF THE SLOPE WHENEVER POSSIBLE. INSTALL AIR RELIEF VALVE AT HIGHEST POINT.
  2. NORMAL SPACING WITHIN THE TOP  $\frac{2}{3}$  OF SLOPE, INSTALL DRIPLINE AT 25% GREATER SPACING AT THE BOTTOM  $\frac{1}{3}$  OF THE SLOPE.
  3. ZONE THE BOTTOM  $\frac{1}{3}$  ON A SEPARATE VALVE.

**NOTE:**  
**REFER TO WRITTEN SPECIFICATION SECTION OF THE CURRENTLY APPROVED PERFORMANCE-BASED PLANTING IRRIGATION SPECIFICATION (32 84 00) FOR ADDITIONAL REQUIREMENTS**



NOTE:  
 1. DO NOT EXCEED 2000 SF PER DRIP GRID STATION

**8** TYPICAL DRIPLINE SAMPLE  
 NOT TO SCALE

