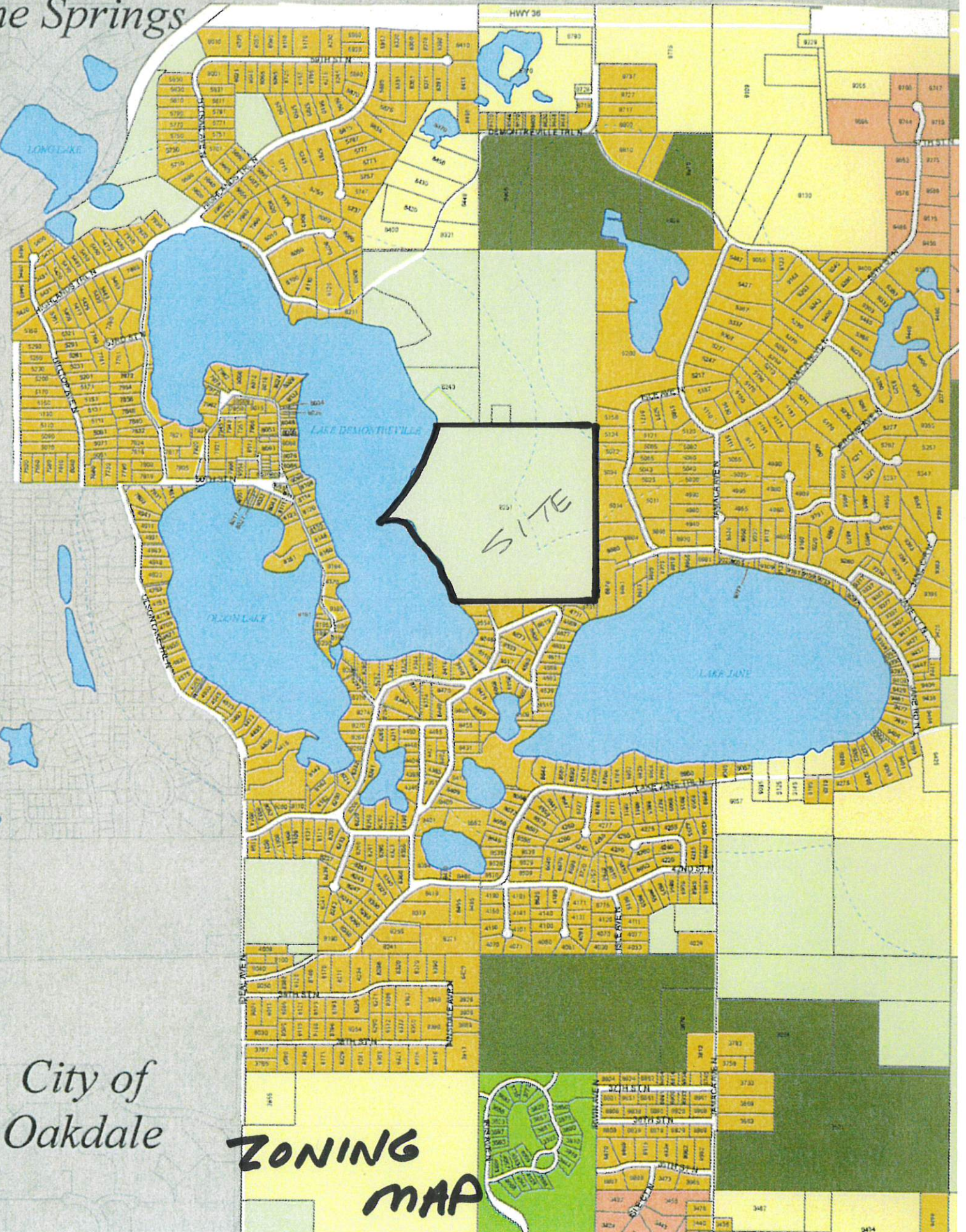


City of
Pine Springs

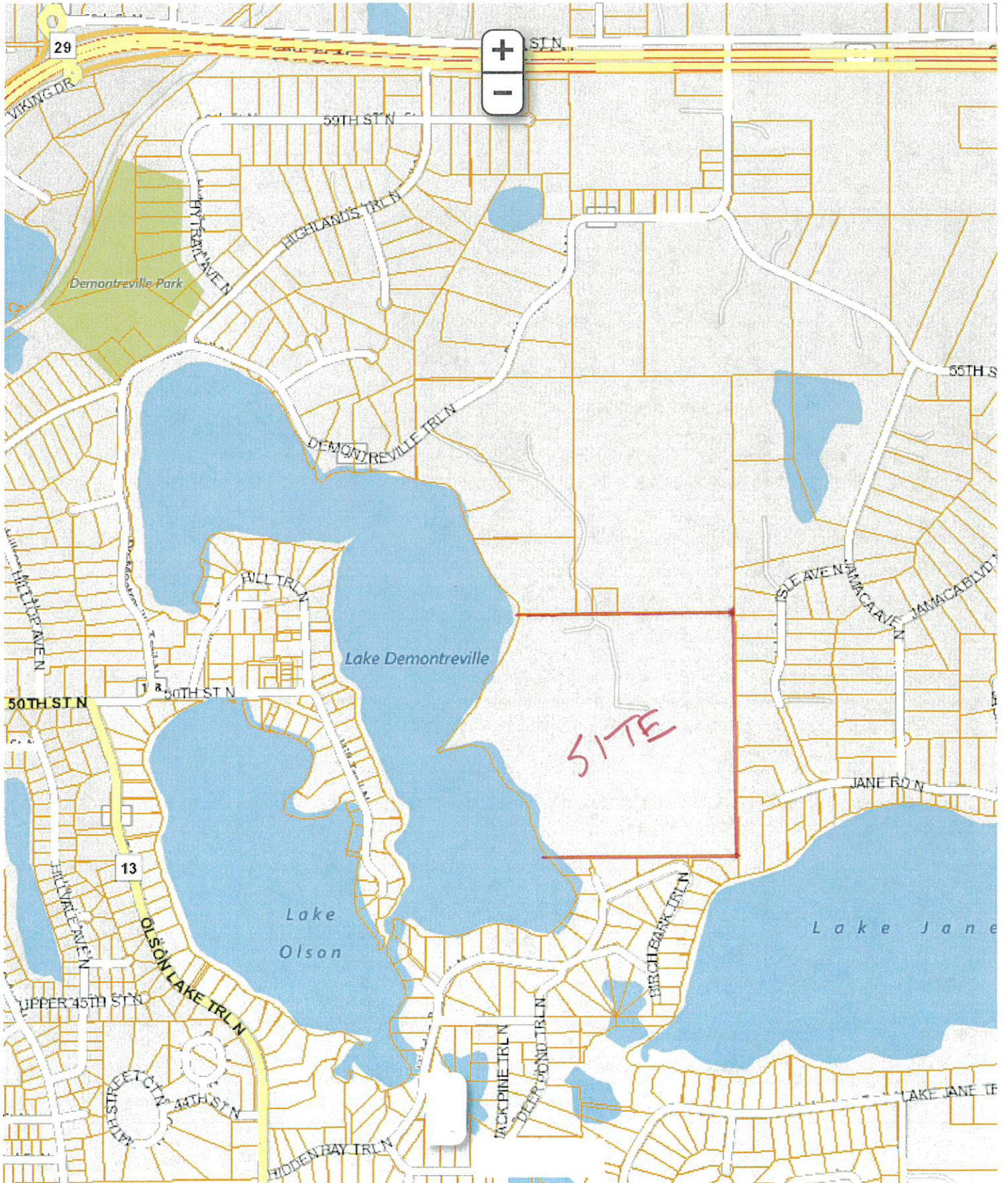


City of
Oakdale

**ZONING
MAP**



Property Viewer





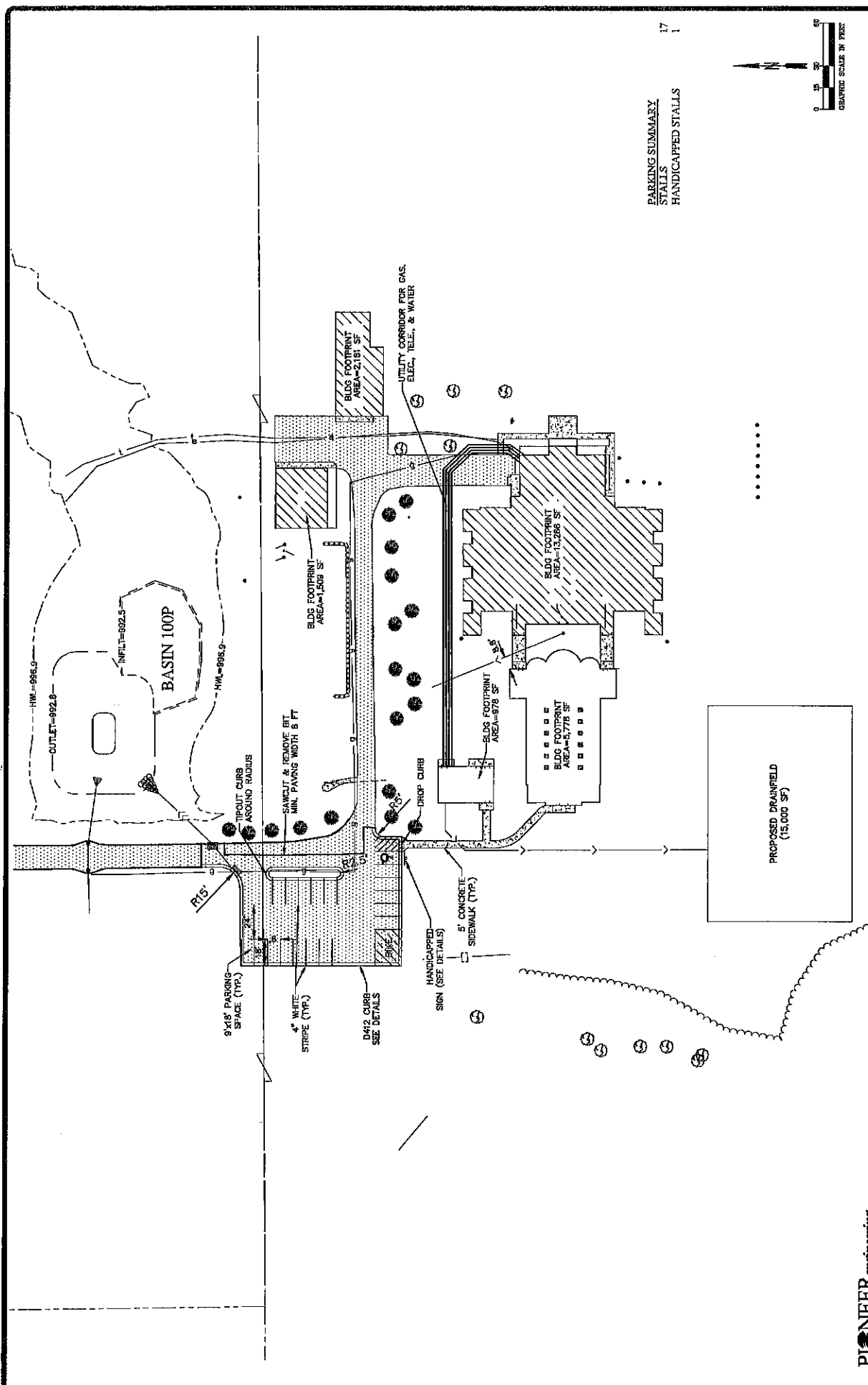
Property Viewer





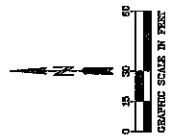
Property Viewer





PARKING SUMMARY
 STALLS
 HANDICAPPED STALLS

17
 1



3.20 of 13

CARMELITE HERMITAGE CHAPEL
 LAMAR BLVD., MANASSAS, VA

CARMELITE HERMITAGE
 15000 PROPOSED DRAINFIELD NORTH
 LAMAR BLVD., MANASSAS, VA

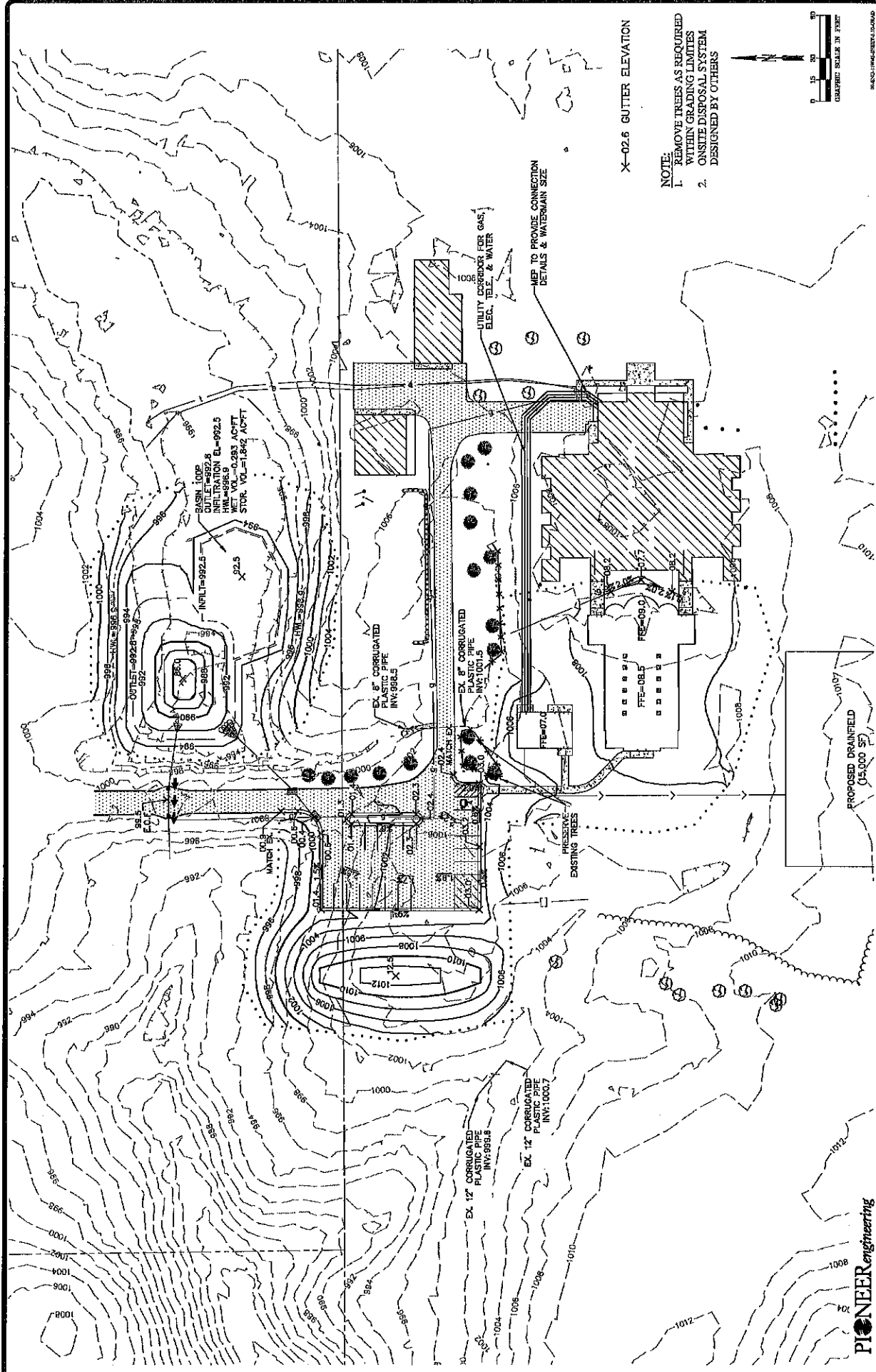
SITE PLAN

DATE	DESCRIPTION
10/15/14	ISSUE FOR PERMITS
08/14/14	ISSUE FOR PERMITS
07/14/14	ISSUE FOR PERMITS

1. These drawings are the property of Pioneer Engineering, Inc. and shall remain the property of Pioneer Engineering, Inc. If they are used for any other project without the written consent of Pioneer Engineering, Inc., the user assumes all liability for any and all damages, including those caused by negligence.

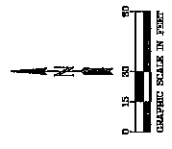
PIONEER engineering
 2402 Dismal Road
 Manassas, VA 20108
 (541) 883-1114
 www.pioneereng.com

©2017 Pioneer Engineering, Inc.



X=02.5 GUTTER ELEVATION

- NOTE:
1. REMOVE TREES AS REQUIRED WITHIN GRADING LIMITS
 2. ON-SITE DISPOSAL SYSTEM DESIGNED BY OTHERS



UTILITY CROSSOVER PER GAS, ELER., TEL., & WATER

HEP TO PROVIDE CONNECTION DETAILS & WATERMAIN SIZE

BASEIN LOOP
 OUTLET=992.5
 INLET=992.5
 H.W. ELEVATION
 NET VOL.=0.283 ACFT
 STOR. VOL.=1.842 ACFT

EX 8" CORRUGATED PLASTIC PIPE INV. 998.5

EX 8" CORRUGATED PLASTIC PIPE INV. 1010.5

EX 12" CORRUGATED PLASTIC PIPE INV. 998.5

EX 12" CORRUGATED PLASTIC PIPE INV. 1000.0

PFE=08.5

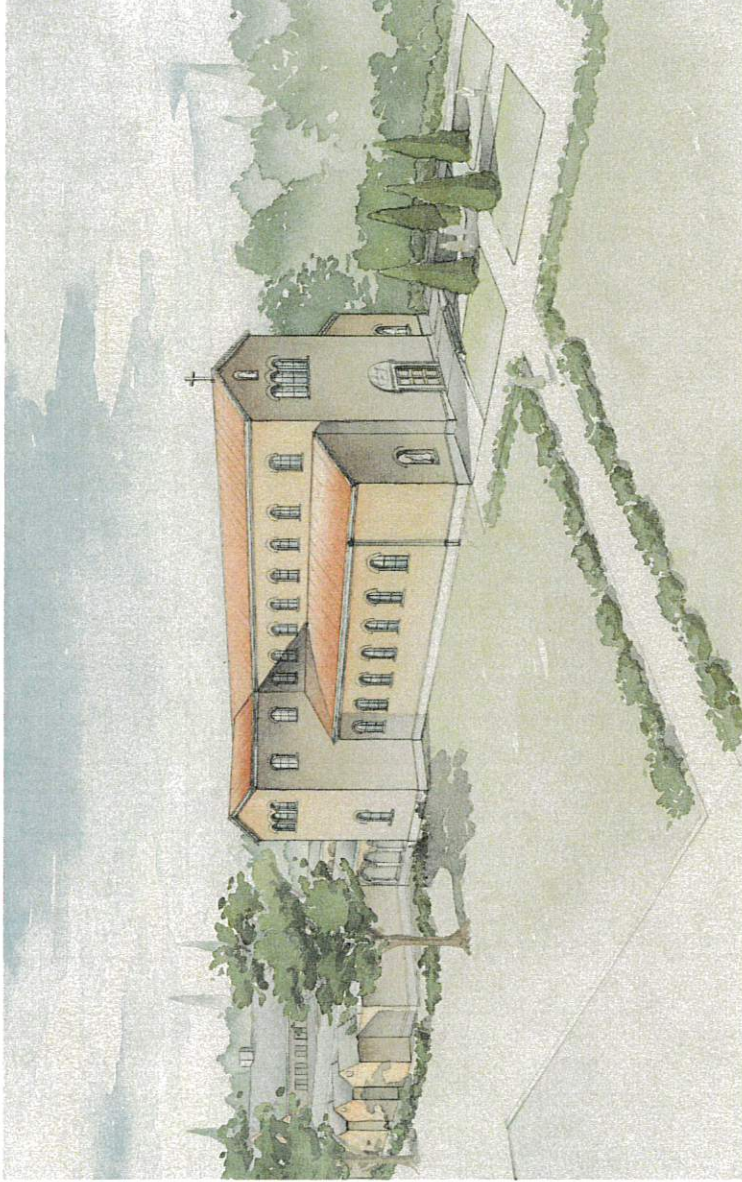
PFE=09.0

PFE=07.0

PROPOSED DRAINFIELD (15,000 SF)

PIONEER engineering 2022 Elmwood Drive Memphis, TN 38120 (901) 581-7114 www.pioneereng.com		PROJECT NO. 1800 DATE: 05-20-2018 DRAWN BY: [Signature] CHECKED BY: [Signature]	SHEET NO. 13 OF 13
GRADING PLAN		CARMELITE HERMITAGE CHAPEL LAKELAND, MISSISSIPPI	

CARMELITE CHAPEL
 CARMELITE HERMITAGE
 OF THE BLESSED VIRGIN MARY
 8249 DE MONTREVILLE TRAIL
 LAKE ELMO, MINNESOTA 55042-9545



OWNERS

CARMELITE HERMITAGE OF THE
 BLESSED VIRGIN MARY
 CONTACT: REV. JOHN BURRIS, O.C.A.R.A.
 8249 DE MONTREVILLE TRAIL
 LAKE ELMO, MN 55042
 PHONE: 651/779-2331

STRUCTURAL ENGINEER

LKL ENGINEERS
 CONTACT: MARK K. KENNEDY
 2735 NORTH HOLLAND-STYVANIA ROAD
 TOLSON, MN 55124
 PHONE: 482/528-2395

M.E.P. ENGINEER

ASSOCIATED CONSULTING
 ENGINEERING, INC.
 CONTACT: KELLY LOUDRENGER
 140 COUNTY PHILIP AVENUE
 SOUTH BEND, IN 46601
 PHONE: 462/418-7228

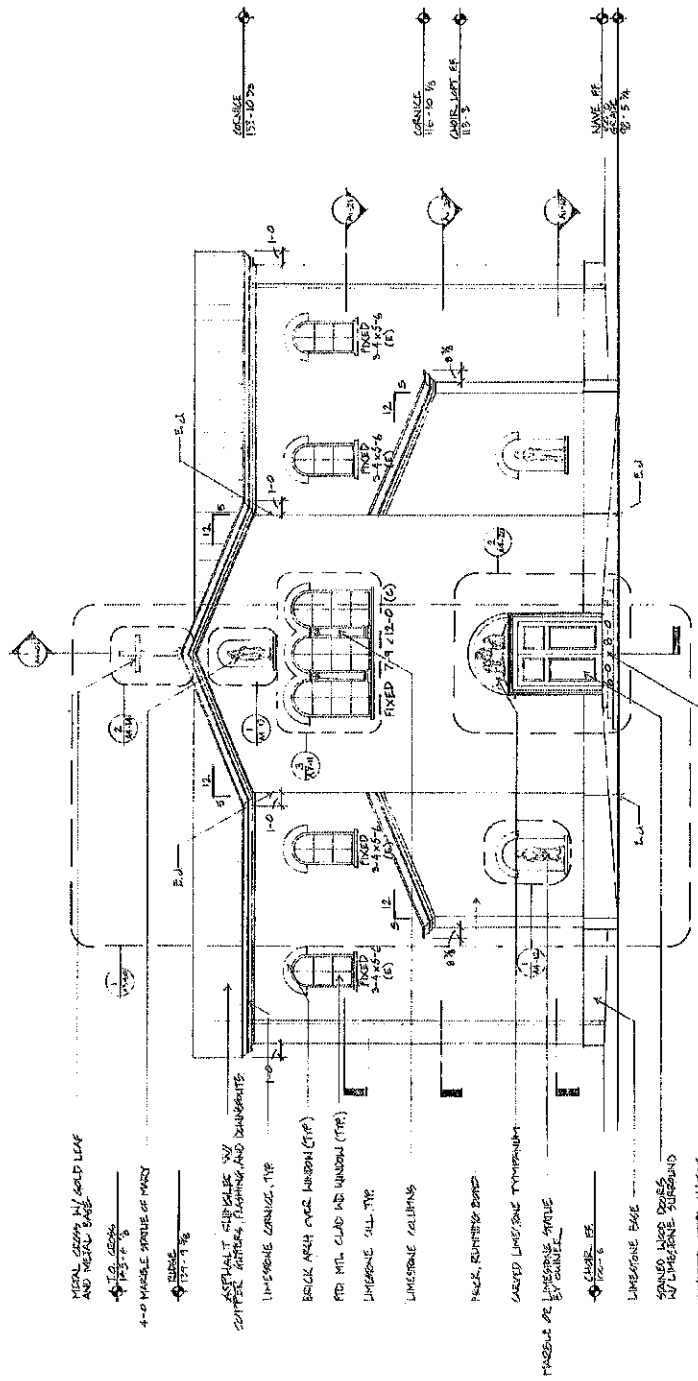
CIVIL ENGINEER, I.A.

PIONEER ENGINEERING
 CONTACT: PAUL CHERNE
 2822 ENTERPRISE DRIVE
 MARIETTA, GA 30067
 PHONE: 404/488-8194

DUNCAN G. STROIK ARCHITECT LLC
 218 WEST WASHINGTON STREET, SUITE 1200
 SOUTH BEND, INDIANA 46601
 574/232-1783; FAX: 574/232-1792

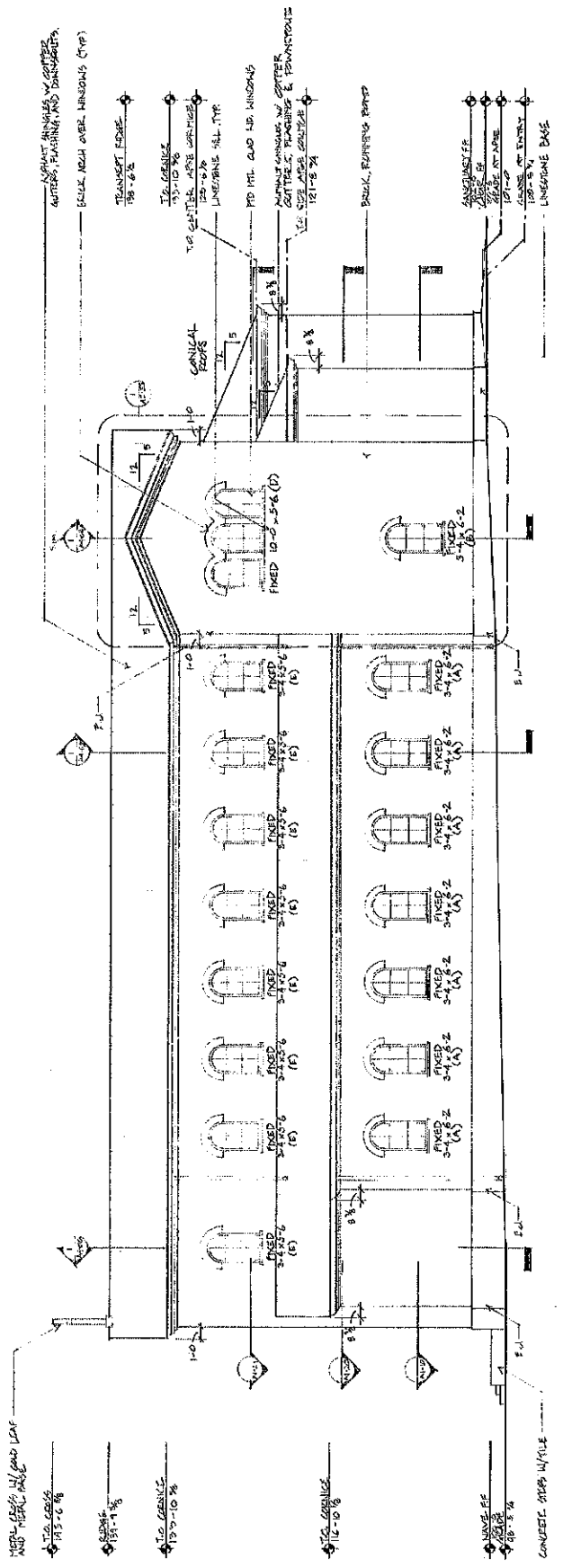
EXTERIOR PERSPECTIVE

SCALE	DATE	REVISION	DATE	BY	CHKD BY
	13 JUNE 2018				
CARMELITE CHAPEL LAKE ELMO, MINNESOTA			DUNCAN G. STROIK ARCHITECT 218 WEST WASHINGTON STREET, SUITE 1200 SOUTH BEND, IN 46601 574/232-1783; 574/232-1792 FAX		
			© 2018 DUNCAN G. STROIK ARCHITECT, LLC		
			TO-001		



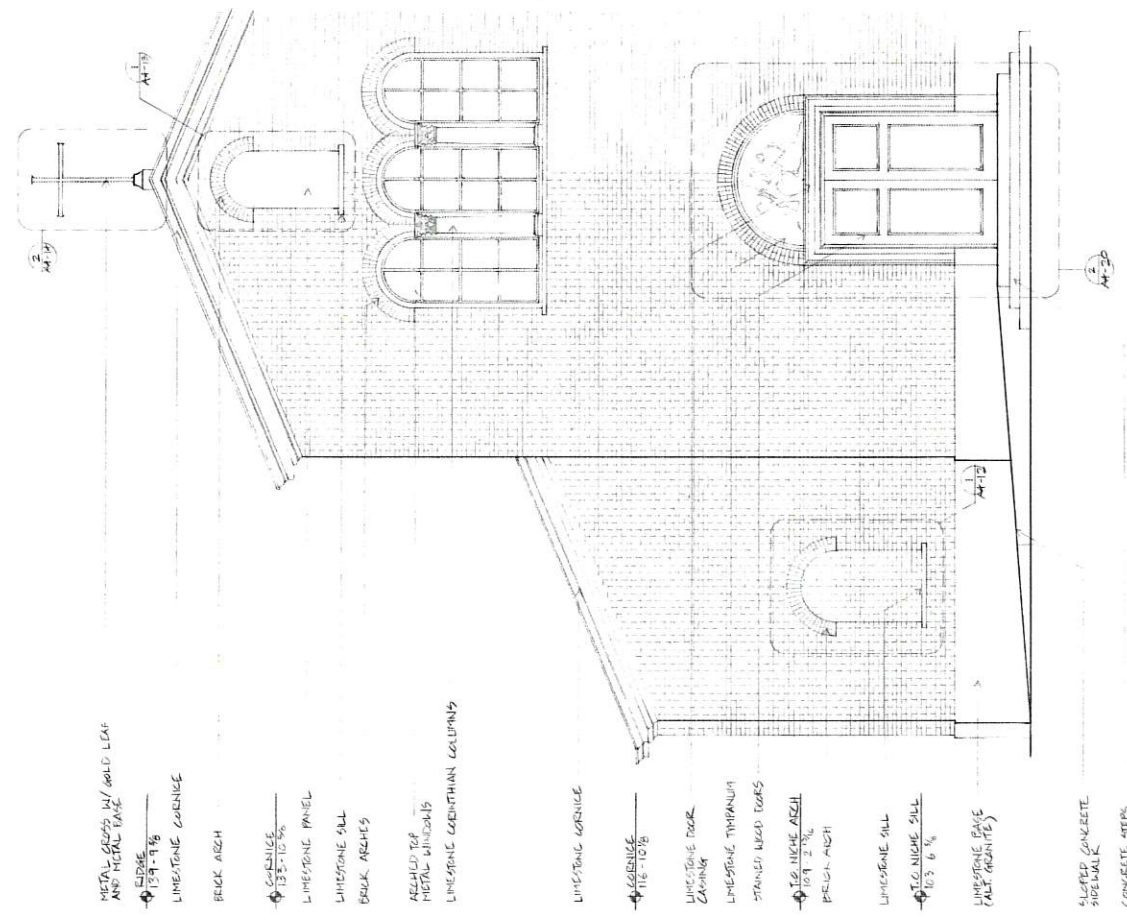
① ELEVATION

WEST ELEVATION	
DATE	12 APR 2011
SCALE	3/4" = 1'-0"
PROJECT	CHARLETT CHAPEL LAKE ELMO, MINNESOTA
SHEET NO.	12
ARCHITECT	DUNCAN G. STROIN ARCHITECT 218 W. WASHINGTON ST. SUITE 100 ST. PAUL, MN 55102-1000 TEL: 612.222.1111 FAX: 612.222.1112 WWW.DGSA.COM
DESIGNER	ART 21



SOUTH ELEVATION	
NO. 27	DATE
12 APR 2011	
DESIGNER	PROJECT
	CHARLETTA CHAPEL
	LARK LIND, MINNESOTA
	ARCHITECT
	210 W. WASHINGTON ST.
	MINNEAPOLIS, MN 55401
	PROJECT NO. 2009-010
	DATE OF ISSUE
	12-18-10
	SCALE
	AS SHOWN
	BY
	AS 0-4

① ELEVATION 27



METAL GLASS W/ GOLD LEAF AND METAL BASE

ROOF
13.9 - 9.8%

LIMESTONE CORNICE

BRICK ARCH

CORNICE
13.5 - 10.5%

LIMESTONE PANEL

LIMESTONE SILL

BRICK ARCHES

ARCHED TOP METAL WINDOWS

LIMESTONE CORINTHIAN COLUMNS

LIMESTONE CORNICE

ROOF
11.5 - 8%

LIMESTONE DOOR CASING

LIMESTONE TYMPANUM

STAINED WOOD DOORS

TO NICHES ARCH
10.9 - 2.1%

BRICK ARCH

LIMESTONE SILL

TO NICHES SILL
10.3 - 6.6%

LIMESTONE BASE (ALT. GRANITE)

SLOPED CONCRETE SIDEWALK

CONCRETE STEPS

TO NICHES ARCH
13.4 - 2.1%

TO NICHES SILL
13.0 - 10.5%

TO WINDOW M.P.
12.1 - 1.4%

TO WINDOW M.P.
12.1 - 1.4%

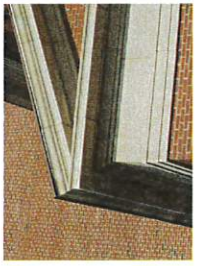
TO TYMPANUM
11.5 - 8%

TO DOOR CASING
10.9 - 2.1%

TO STONE BASE
10.2 - 0%

NAVE FF
10.0 - 0%

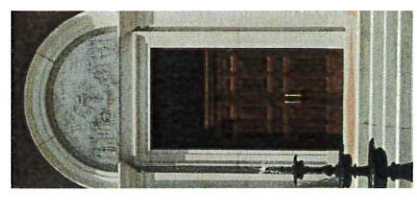
GRADE (VARIES)



LIMESTONE CORNICES



PAINTED METAL CLAD WOOD WINDOWS, WITH SILLS AND BRICK ARCHES



STAINED WOOD DOORS, LIMESTONE SURROUND AND LIMESTONE TYMPANUM



GAF SLATELINE SHINGLE ROOF EMERALD GREEN



BELDEN BRICK ST. SIMON BLEND



RUSTIC BUFF LIMESTONE BASE



COPPER GUTTERS, FLASHING AND DOWNSPOUTS

PHOTO REFERENCE BOARD

SCALE	DATE	BY	REVISED
1/8" = 1'-0"	18 MAY 2018		
REVISION			
			R-1

CARMELO CHAPPEL
LAKE EMMO, MINNESOTA
DUNCAN G. STROCK, ARCHITECT
218 W. SOUTH BEND, IN. 46701
574/235-1788, 574/732-1797 FAX
© 2017 DUNCAN G. STROCK ARCHITECT, LLC