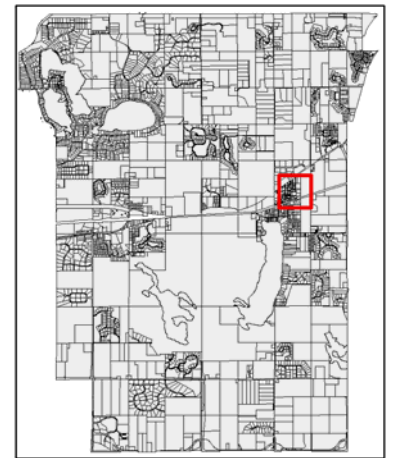


## Lions Park

Lions Park is a fully developed park located in the heart of the “Old Village” of Lake Elmo. Shelter facilities make Lions Park a good meeting place for group activities. Each August, Lions Park is the site of the annual city celebration, *Huff-n-Puff Days*. This site is also the location of the Lake Elmo Center for the Arts which occupies a former house in the northwest corner of the property.

Shelter facilities make Lions Park a good meeting place for group activities. Each August, Lions Park is the site of the annual city celebration, *Huff-n-Puff Days*. This site is also the location of the Lake Elmo Center for the Arts which occupies a former house in the northwest corner of the property.

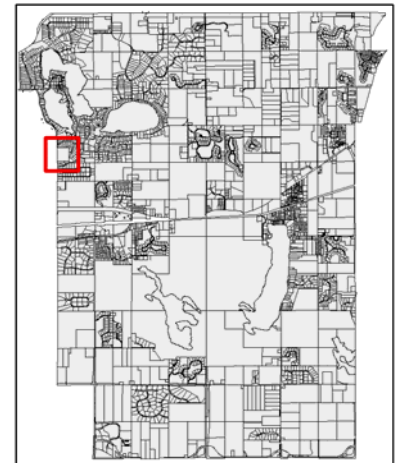


**Classification:** Neighborhood Park  
**Location:** 3525 Laverne Avenue North  
**Size:** 3.2 acres (Regional Arts Center is 0.2 acres)

Natural Features	Passive Uses	Active Uses	Other Facilities
	picnicking	playground lighted baseball field lighted tennis courts basketball court volleyball court horseshoes hockey/ice skating rink badminton batting cage	off-street parking concession stand/warming house restrooms - permanent drinking fountain warming house bleachers shelter

## Pebble Park

Pebble Park, located on the west city line, was once a 3M gravel pit. The rim of the pit offers an unpaved parking area nestled among a playground, tennis courts, and a basketball court. The bottom of the pit is now a ball field. The south and northeast ends of the park features a rolling wooded terrain with sets of easily accessible trails.



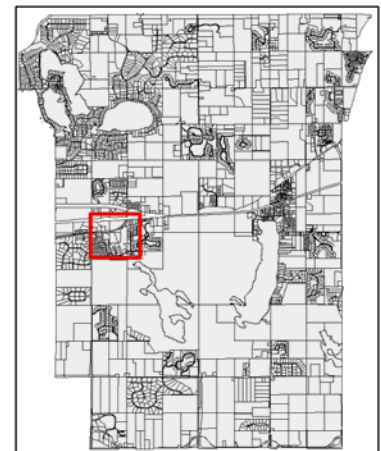
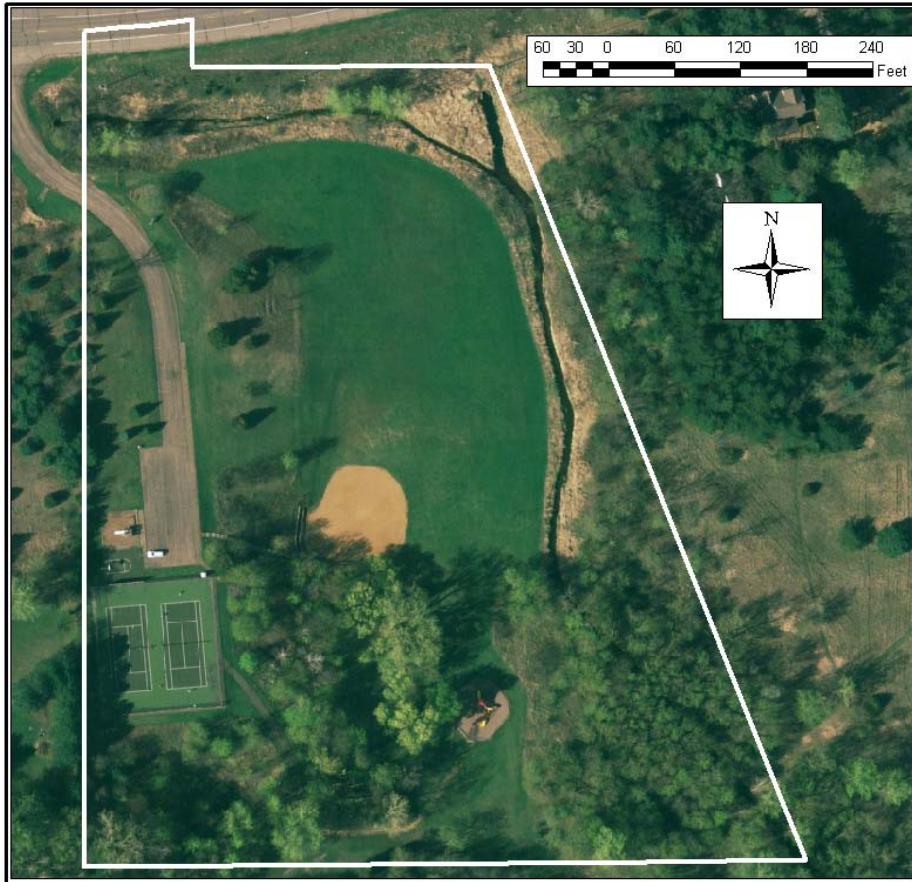
**Classification:** Neighborhood Park  
**Location:** 8160 Lake Jane Trail North  
**Size:** 17 acres

Natural Features	Passive Uses	Active Uses	Other Facilities
natural parkland natural resource area	picnicking trails - walking, jogging	playground lighted tennis courts basketball court softball field sliding hill trails - mountain bike	off-street parking restrooms - portable water fountain

## Tablyn Park

At Tablyn Park, located along a gully, high ground features a paved parking area and tennis courts with a connecting paved trail. The trail leads one on a gentle switchback past the tennis courts down to the gully. Here the trail passes by a picnic area, a playground and the softball field. A wooden stairway connects the field with the parking area located at the top of the hill. In winter, one of Lake

Elmo's most popular sledding hills can be found here.



**Classification:** Neighborhood Park  
**Location:** 8735 Stillwater Boulevard North  
**Size:** 8.6 acres

Natural Features	Passive Uses	Active Uses	Other Facilities
	picnicking trails - walking, jogging, biking	playground tennis courts basketball court softball field football/soccer field sledding hill	off-street parking grills restrooms - portable