



STAFF REPORT

DATE: April 3, 2018

CONSENT

ITEM #: 5

AGENDA ITEM: Municipal State Aid System – Resolution Establishing Municipal State Aid Streets

SUBMITTED BY: Jack Griffin, City Engineer

REVIEWED BY: Kristina Handt, City Administrator
Rob Weldon, Public Works Director
Chad Isakson, Assistance City Engineer

ISSUE BEFORE COUNCIL: Should the City Council approve the designation of Kimbro Avenue North/50th Street North, from 47th Street North to Lake Elmo Avenue (CSAH 17), and the designation of Jade Trail North, from Hudson Boulevard to 5th Street North as municipal state aid routes thereby increasing the municipal state aid system by 1.00 mile?

BACKGROUND: As a Municipal State Aid city, the City of Lake Elmo is eligible to designate certain higher volume roadways that are functionally classified as collector or arterial streets, as Municipal State Aid routes, and are eligible to receive a proportionate share of state aid funding to assist with the maintenance and construction of the MSA roadway network. Streets designated as Municipal State Aid Streets must meet the selection criteria of Rule 8820.0700, sub. 3. The City is allowed to designate roadway mileage up to a cap of 20% of the total local and county roadway system within the City limits. In addition, the City is allowed to designate any county road or county state aid highway (CSAH) which is turned back to the city with said mileage being over and above the 20% limitation.

Municipal State Aid (MSA) funding is allocated in accordance with state statutes with one-half of the annual funding based on each city's population relative to other state aid cities, and one-half of the annual funding based on each city's estimated "Needs".

PROPOSAL DETAILS/ANALYSIS: As part of the City's Municipal State Aid System the City must certify to the Office of State Aid the total mileage within the corporate limits of Lake Elmo. Due to the development activities in 2017, Lake Elmo increased the total mileage of streets by 5.84 miles. The certification of these streets to the office of State Aid in 2017 allows the City to designate an additional 1.00 mile of municipal state Aid streets (20%). Therefore, staff has reviewed the City's Municipal State-Aid road network and is recommending that Kimbro Avenue North/50th Street North, from 47th Street North to Lake Elmo Avenue (CSAH 17), and of Jade Trail North, from Hudson Boulevard to 5th Street North be designated as Municipal State Aid Streets.

FISCAL IMPACT: With the designation of Kimbro Avenue North/50th Street North and Jade Trail North as a municipal state aid routes the City will increase the City's state aid system by approximately 1.00 mile of roadway. The additional roadway will increase the City's determination of Needs on an annual basis resulting in an increased allocation of Municipal State Aid funding.

RECOMMENDATION: Staff is recommending that the City Council approve, *as part of the Consent Agenda*, a Resolution approving revisions to the City’s Municipal State Aid System (MSAS) as presented to designate Kimbro Avenue North/50th Street North, from 47th Street North to Lake Elmo Avenue (CSAH 17), and Jade Trail North, from Hudson Boulevard to 5th Street North as a municipal state aid routes for the determination of Needs. If removed from the consent agenda, the recommended motion for the action is as follows:

“Move to approve Resolution 2018-031, Establishing Kimbro Avenue North/50th Street North and Jade Trail North, as Municipal State Aid Streets.”

ATTACHMENTS:

1. Resolution Establishing Municipal State Aid Streets.
2. 2017 Certification of Mileage.
3. Kimbro Avenue North/50th Street North MSA Designation Map.
4. Jade Trail North MSA Designation Map.

**CITY OF LAKE ELMO
WASHINGTON COUNTY
STATE OF MINNESOTA**

**RESOLUTION NO. 2018-031
A RESOLUTION ESTABLISHING MUNICIPAL STATE AID STREETS**

WHEREAS, the City of Lake Elmo has reviewed the City's Municipal State Aid Street System and has identified system revisions in accordance with the policies and goals of the City's future growth and development and Comprehensive Transportation Plan; and

WHEREAS, based on these recommendations, it appears to the Lake Elmo City Council that the streets hereinafter described should be designated Municipal State Aid Streets under the provisions of Minnesota Law.

NOW, THEREFORE, BE IT RESOLVED, by the City Council of the City of Lake Elmo that the streets described as follows, to-wit:

STREET NAME	FROM	TO
Kimbro Avenue N./50 th Street N.	0.72 miles (3,790 ft.)	47 th Street N. to Lake Elmo Avenue N. (CSAH 17)
Jade Trail North	0.28 miles (1,475 ft.)	Hudson Boulevard to 5 th Street North

be, and hereby are, established, located, and designated a Municipal State Aid Street of the City of Lake Elmo subject to the approval of the Commissioner of Transportation of the State of Minnesota.

BE IT FURTHER RESOLVED, that the City Clerk is hereby authorized and directed to forward two certified copies of this resolution to the Commissioner of Transportation for consideration, and upon approval of the designation of said roads or portion thereof, that same be constructed, improved and maintained as a Municipal State Aid Street of the City of Lake Elmo, and to be numbered and known as a Municipal State Aid Street.

ADOPTED BY THE LAKE ELMO CITY COUNCIL ON THE THIRD DAY OF APRIL 2018.

CITY OF LAKE ELMO

By: _____
Mike Pearson
Mayor

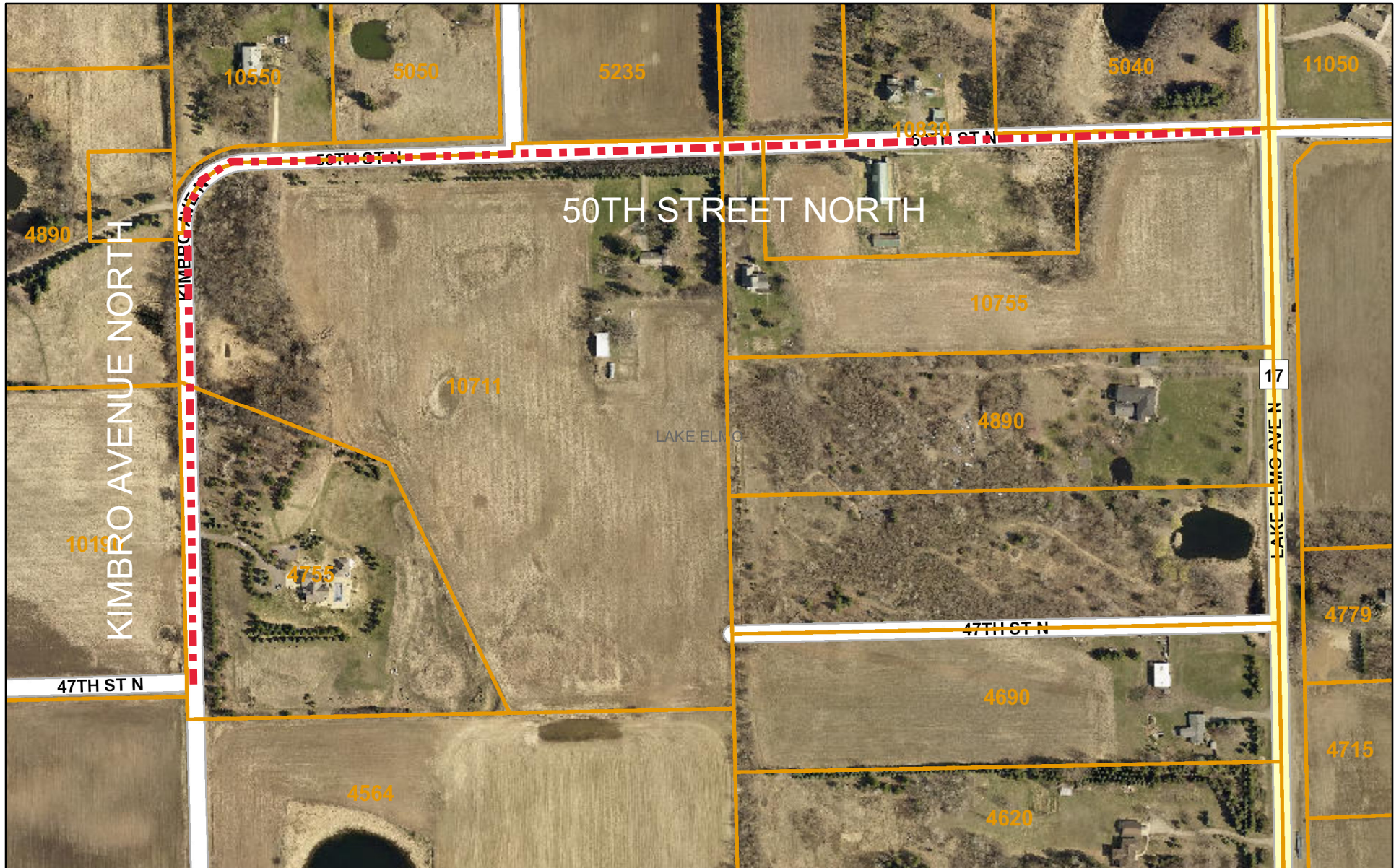
(Seal)
ATTEST:

Julie Johnson
City Clerk

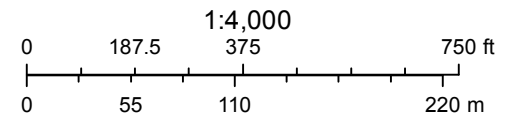
2017 CERTIFIED MILEAGE

SUBDIVISION	TOTAL		RESIDENTIAL		COLLECTOR		COLLECTOR NAME
	feet	miles	feet	miles	feet	miles	
Savona 4th	5,450	1.03	4,100	0.78	1,350	0.26	5TH STREET NORTH
Boulder Ponds 2nd/5th Street	2,082	0.39	887	0.17	1,195	0.23	5TH STREET NORTH
Hammes 1st	4,011	0.76	4,011	0.76	0	0.00	
Hammes 2nd	1,590	0.30	1,590	0.30	0	0.00	
Easton Village 2nd	1,610	0.30	750	0.14	860	0.16	VILLAGE PARKWAY
Easton Village 3rd	1,350	0.26	1,350	0.26	0	0.00	
Wildflower 2nd	2,075	0.39	2,075	0.39	0	0.00	
Inwood 4th	1,900	0.36	1,900	0.36	0	0.00	
Inwood 5th	5,408	1.02	5,408	1.02	0	0.00	
The Royal Golf Club at Lake Elmo	4,086	0.77	4,086	0.77	0	0.00	
Southwind	1,257	0.24	1,257	0.24	0	0.00	
TOTALS	30,819	5.84	27,414	5.19	3,405	0.64	

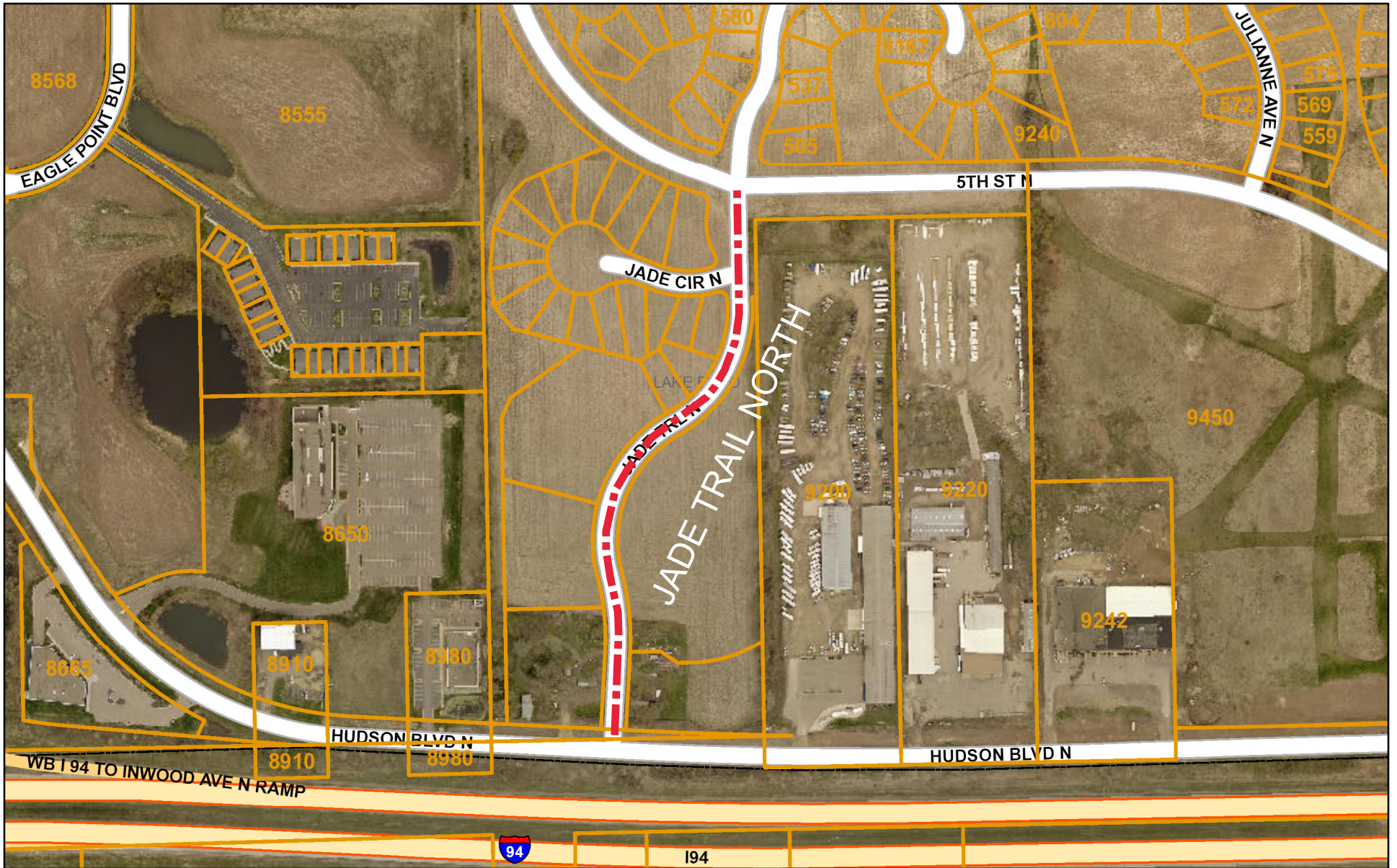
City of Lake Elmo - Kimbro Ave N/ 50th St N



February 22, 2018



City of Lake Elmo - Jade Trail N



February 22, 2018

