



## STAFF REPORT

DATE: March 16, 2021

### **PUBLIC HEARING**

**AGENDA ITEM:** Public Improvement Hearing; Approve Resolution Ordering the Improvement; Accept Bids and Award Contract for the Old Village Phase 5 and 6 Street, Drainage, and Utility Improvements

**SUBMITTED BY:** Jack Griffin, City Engineer

**REVIEWED BY:** Kristina Handt, City Administrator  
Sarah Sonsalla, City Attorney  
Marty Powers, Public Works Director  
Chad Isakson, Assistant City Engineer

---

**ISSUE BEFORE COUNCIL:** The City Council is respectfully requested to open the Public Improvement Hearing for the Old Village Phase 5 and 6 Street, Drainage, and Utility Improvements; and following the Hearing, consider adopting a resolution Ordering the Improvement. A 4/5th vote of the city council is required to order the improvement. Additionally, should the City Council accept bids and award a contract for the Old Village Phase 5 and 6 Street, Drainage, and Utility Improvements?

**BACKGROUND:** On February 16, 2021 the Lake Elmo City Council called for a public improvement hearing for the Old Village Phase 5 and 6 Street, Drainage, and Utility Improvements. The improvements include street and drainage improvements; watermain improvements; sanitary sewer improvements including new municipal sanitary sewer service to replace individual on-site septic systems; a reconstructed bituminous street with new concrete curb and gutter; and a repair or restoration of the existing street drainage system.

The attached notice was published in the official newspaper and individual notifications were sent to each address that will be wholly or partially assessed for the improvements. A feasibility report was adopted by the City Council on February 16, 2021 based on bids received on January 27, 2021 in order to ready these improvements for construction beginning in 2021. Informational meetings for members of the community affected by the proposed improvements were held on March 3, 2021 and March 4, 2021.

**PROPOSAL DETAILS/ANALYSIS:** Consistent with previous project phases, the Old Village Phase 5 and 6 improvements will be partially financed by imposing special assessments against the benefiting properties. Special assessments are levied in accordance with Minnesota Statutes Chapter 429 and consistent with the City's Special Assessment Policy and the Old Village Sewer Assessment Policy. As part of the assessment procedures, the Council must hold a public improvement hearing giving each property owner an opportunity to be heard regarding the proposed improvements and proposed special assessments. The City Council is respectfully requested to hold the public improvement hearing for the Old Village Phase 5 and 6 Street, Drainage, and Utility Improvements. Following the hearing, the council will be asked to consider adopting a Resolution Ordering the Improvement. The resolution ordering the improvements requires a vote of four-fifths of all members of the council since the project was initiated by the City Council, and not by property owner petition.

The proposed improvements include the extension of municipal sanitary sewer to properties currently served by individual on site treatment systems or community owned 201 wastewater treatment systems, replacing the aged watermain along the project corridors, and reconstructing the streets to a similar footprint that exists today. Stormwater management and associated facilities are included to both provide surface and subsurface street and right-of-way drainage to protect the new street infrastructure, to obtain reduced runoff

rates at each point of discharge from the project site, and to provide storm water treatment consistent with watershed regulations.

The proposed reconstructed street section consists of 3.5-inches of bituminous pavement, 6-inches of aggregate base, and 24-inches of select granular to provide a minimum 7-ton street design. Unique design elements for each project area are described below in more detail.

32nd Street Neighborhood:

- Sanitary sewer pipe is oversized, using a 15-inch sewer pipe, to provide sanitary sewer service capacity for future extensions.
- Grinder stations are included for 12 properties along the south side of 32nd Street, as needed, due to the low house elevations.
- Decommission City owned 201 system on 32nd Street. Convert site to a stormwater basin to meet watershed requirements for stormwater management.
- Construct a turnaround at the end of Kraft Circle (none exists today).
- Construct a cul-de-sac on Langly Court (none exists today).
- Minimal widening of 32nd Street, 33rd Street, 33rd Street Lane, Lampert Ave, and Langly Court.

Upper 33rd Street North:

- Minimal widening of Upper 33rd Street N.

34th Street North:

- Decommission existing City owned 201 system at the end of 34th Street North.
- Construct a cul-de-sac on the City owned property (no turn around exists today).
- Minimal widening of 34th St N.

36th Street North:

- Replace existing City owned trail.

Private Driveway (east of Lake Elmo Avenue):

- Install a low-pressure sanitary sewer conveyance system to 5 properties. Pump systems to be supplied by the City, but ownership and maintenance of the system is the responsibility of the property owner.
- Extend public watermain and service stub to each parcel as these properties currently rely on private wells.

The estimated total cost for the project is \$8,718,300; including \$3,533,500 for the street, drainage, and storm sewer improvements, \$3,668,500 for the sanitary sewer improvements, and \$1,516,300 for the water system improvements. Of these costs, \$2,610,142 will be funded through special assessments.

Preliminary project assessments are based on actual contractor bids that were received on January 27, 2021 together with a total estimated cost accounting for non-construction related project costs (engineering, geotechnical investigations and testing, easement acquisition, contingencies, administration and bonding). The preliminary assessment rolls detailing each property's proposed assessment amount are included in the Appendix of the feasibility report. Consistent with the City's Special Assessment Policy, the street and storm sewer improvements will be levied over a 15-year period and the sanitary sewer improvements will be levied over a 20-year period. Assessments would be charged an interest rate of 1% over the bond rate for the project.

The City Council is also asked to consider awarding a construction contract to complete the project. Bids were received and opened electronically on January 27, 2021. The City received seven bids for this project, with A-1 Excavating, Inc. providing the lowest bid of \$6,488,157.83. Contractor references for A-1 Excavating, Inc. were reviewed and verified. The City Engineer and the Design Engineer (SEH) are therefore recommending that the City award the contract to the lowest responsible bidder, A-1 Excavating, as outlined in the attached letter.

As a part of this award staff is requesting Council to provide the City Administrator authorization to enter into a material testing contract for the construction geotechnical work in the not-to-exceed amount of \$66,700. Staff received proposals from Braun Intertec and AET, Inc. to complete the work and are recommending AET. Additionally, staff is requesting Council to provide the City Administrator authorization to enter into a construction services contract with SEH in the amount of \$581,000 to provide construction staking, construction observation, and technical support for the project. These fees are included in the total project budget presented above.

**FISCAL IMPACT:** Approval of the resolutions included in this item commits the council to enter into a construction contract for the project. The estimated total cost for the project is \$8,718,300; consisting of street, drainage, and storm sewer improvements at \$3,533,500, sanitary sewer improvements at \$3,668,500, and water system improvements at \$1,516,300.

The project funding will consist of \$2,610,142 in special assessments for sanitary sewer, street and drainage, and watermain improvements; \$2,468,500 paid through the Sewer Enterprise Fund; \$1,381,300 paid through the Water Enterprise Fund; and \$2,258,358 paid through the general tax levy for the City share of the street and drainage improvements.

**RECOMMENDATION:** Staff is recommending that the City Council adopt a Resolution Ordering the Improvements as outlined in the Feasibility Report dated February 2021. A 4/5th vote of the city council is required to order the improvement. The recommended motion for this action is as follows:

***“Move to adopt Resolution No. 2021-030 Ordering the Old Village Phase 5 and 6 Street, Drainage and Utility Improvements as outlined in the Feasibility Report dated February 2021.”***

Staff is further recommending that the City Council approve a resolution accepting bids and awarding a contract to A-1 Excavating, Inc. in the amount of \$6,488,157.83 for the Old Village Phase 5 and 6, Street, Drainage, and Utility Improvements. The recommended motion for this action is as follows:

***“Move to approve Resolution No. 2021-031, accepting bids and awarding a contract to A-1 Excavating, Inc. in the amount of \$6,488,157.83 for the Old Village Phase 5 and 6 Street, Drainage and Utility Improvements.”***

Staff is also recommending that the City Council authorize the City Administrator to enter into a material testing contract for the project construction services, in the not-to-exceed amount of \$66,700 with AET and a construction services contract with SEH in the amount of \$581,000. The recommended motion for this action is as follows:

***“Move to authorize the City Administrator to enter into a material testing contract for project construction services in the not-to-exceed amount of \$67,600 with AET and a construction services contract with SEH in the amount of \$581,000 for the Old Village Phase 5 and 6 Street, Drainage and Utility Improvements.”***

**ATTACHMENTS:**

1. Resolution Ordering the Improvements for the Old Village Phase 5 and 6 Street, Drainage, and Utility Improvements.
2. Notice of Hearing on Improvement.
3. Preliminary Assessment Roll.
4. Resolution Accepting Bids and Awarding a Contract for the Old Village Phase 5 and 6 Street, Drainage, and Utility Improvements
5. Engineer’s Letter of Award Recommendation and Tabulation of Bids.
6. Location Map.
7. Project Schedule.

**CITY OF LAKE ELMO  
WASHINGTON COUNTY  
STATE OF MINNESOTA**

**RESOLUTION NO. 2021-030**

**A RESOLUTION ORDERING THE IMPROVEMENT FOR THE  
OLD VILLAGE PHASE 5 AND 6 STREET, DRAINAGE, AND UTILITY  
IMPROVEMENTS**

**WHEREAS**, pursuant to city council authorization, adopted on February 16, 2021, a feasibility report has been prepared by FOCUS Engineering, Inc. for the Old Village Phase 5 and 6 Street, Drainage, and Utility Improvements; and

**WHEREAS**, ten days mailed notice and two weeks published notice of the hearing was given, and the hearing was held thereon on the 16th day of March 2021, at which all persons desiring to be heard were given the opportunity to be heard thereon; and

**WHEREAS**, the feasibility report prepared by FOCUS Engineering, Inc., and dated February 2021 states that the project is necessary, cost-effective, and feasible.

**NOW, THEREFORE, BE IT RESOLVED,**

1. Such improvement is deemed necessary, cost-effective, and feasible as detailed in the Feasibility Report dated February 2021.
2. Such improvement is hereby ordered as proposed in the council resolution adopted this 16th day of March, 2021.
3. The city council declares its official intent to reimburse itself for the costs of the improvement from the proceeds of tax exempt bonds.

**ADOPTED BY THE LAKE ELMO CITY COUNCIL ON THE SIXTEENTH DAY OF MARCH,  
2021.**

**CITY OF LAKE ELMO**

(Seal)  
ATTEST:

\_\_\_\_\_  
Julie Johnson  
City Clerk

By: \_\_\_\_\_  
Charles Cadenhead  
Mayor

**CITY OF LAKE ELMO  
NOTICE OF HEARING ON IMPROVEMENT  
OLD VILLAGE PHASE 5 AND 6 STREET AND UTILITY IMPROVEMENTS**

Notice is hereby given that the City Council of Lake Elmo will conduct a public hearing on **Tuesday, March 16, 2021**, at or approximately after 7:00 P.M. to consider the making of the following improvements, pursuant to Minnesota Statutes, Sections 429.011 to 429.111;

Street and drainage improvements, watermain improvements, and sanitary sewer improvements including new municipal sanitary sewer service to replace individual on-site septic systems; a reconstructed bituminous street with new concrete curb and gutter; and a repair or restoration of the existing street drainage system for the following areas:

- 32nd Street Neighborhood:
  - 32nd Street North, from Lake Elmo Avenue west to 33rd Street North;
  - 33rd Street North, from Lake Elmo Avenue west to 32nd Street North;
  - 33rd Street Lane North;
  - Kraft Circle North, from 33rd Street North south to dead end;
  - Lampert Avenue North, from 33rd Street North south to 32nd Street North;
  - Langly Court North, from 33rd Street North south to dead end;
  
- Upper 33rd Street North, from Lake Elmo Avenue west to dead end;
- 34th Street North, from Lake Elmo Avenue west to dead end;
- 36th Street North along trail easement, from Lake Elmo Avenue west to dead end;
- Private Driveway, from Lake Elmo Avenue east to dead end, including 3407, 3409, 3411, 3413, 3415 Lake Elmo Avenue.

Due to the ongoing COVID-19 pandemic, members of the City Council will either participate in the meeting by telephone or other electronic means pursuant to Minnesota Statutes, Section 13D.021, or in-person at the City Council's regular meeting place at Lake Elmo City Hall, 3800 Laverne Avenue North, Lake Elmo, Minnesota. The City will provide an update on the meeting method/type for the hearing on the City's website at <http://www.lakeelmo.org/> as the meeting gets closer and those details can be finalized with certainty. Additionally, questions or comments related to the public hearing may be emailed to Julie Johnson, City Clerk at [jjohnson@lakeelmo.org](mailto:jjohnson@lakeelmo.org), made by phone at 651.747.3914, or mailed to 3880 Laverne Avenue North, Suite 100, Lake Elmo, MN 55042. **Comments submitted through these methods must be received by Tuesday, March 16, 2021 at 12:00 p.m. in order to be considered during the hearing. Please note that any emails, letters and attachments you send to the City are likely considered public information and the City staff may use them in staff reports that go to the City Council and/or the general public.**

The area proposed to be assessed for these improvements include properties abutting the above referenced streets or properties that gain direct driveway access from the above referenced streets, properties that receive access to the municipal sanitary sewer system,

and properties that receive new access to the municipal drinking water system. The estimated total cost for the project is \$8,718,300; consisting of street, drainage, and storm sewer improvements at \$3,533,500, sanitary sewer improvements at \$3,668,500, and water system improvements at \$1,516,300. A reasonable estimate of the impact of the assessment will be available at the hearing. Such persons as desiring to be heard with reference to the proposed improvements will be heard at this meeting.

**DATED: February 16, 2021**

**BY ORDER OF THE LAKE ELMO CITY COUNCIL**

**Charles Cadenhead, Mayor**

*(Published in the Stillwater Gazette Review on February 19, 2021 and February 26, 2021)*

OLD VILLAGE PHASE 5 AND 6: STREET AND UTILITY IMPROVEMENTS  
32ND STREET NEIGHBORHOOD  
PRELIMINARY ASSESSMENT ROLL

NO.	NAME	ADDRESS	MAILING ADDRESS			PID	TOTAL ASSESSMENT AMOUNT	STREET AND DRAINAGE ASSESSMENT AMOUNT	STREET AND DRAINAGE IMPROVEMENT UNITS	COMMERCIAL PROPERTY STREET FRONT FOOTAGE	SANITARY SEWER ASSESSMENT AMOUNT	SAC
1	HORTTOR CAROLYN M SMITH		1959	PARK	DR N	MAPLEWOOD MN 55119	1302921330042	\$6,850.00	\$6,850.00	0.5	\$0.00	0
2	KNOWLAN AMY C & MATTHEW J	11075 32ND ST N	11075	32ND	ST N	LAKE ELMO MN 55042	1302921330022	\$26,200.00	\$13,700.00	1	\$12,500.00	1
3	BIEVER DOUGLAS & KELLY	11055 32ND ST N	11055	32ND	ST N	LAKE ELMO MN 55042	1302921330023	\$26,200.00	\$13,700.00	1	\$12,500.00	1
4	NEUMANN PAUL & NANCY	11033 32ND ST N	6908	27TH	ST N	OAKDALE MN 55128	1302921330024	\$26,200.00	\$13,700.00	1	\$12,500.00	1
5	MEHSIKOMER JOYCE H	11015 32ND ST N	PO	BOX 47		LAKE ELMO MN 55042	1302921330026	\$26,200.00	\$13,700.00	1	\$12,500.00	1
6	SCHMOECKEL DAVID R & DARLENE B	10997 32ND ST N	1019	INSPIRATION	PKY N	BAYPORT MN 55003	1302921330027	\$38,700.00	\$13,700.00	1	\$25,000.00	2
7	MICHAEL G MCGRATH 2011 IRREV TRUST	10975 32ND ST N	4	ASCONA	TERR	LANCHO MIRAGE CA 92270	1402921440009	\$26,200.00	\$13,700.00	1	\$12,500.00	1
8	GUENTZEL JAKE A	10961 32ND ST N	10961	32ND	ST N	LAKE ELMO MN 55042	1402921440010	\$26,200.00	\$13,700.00	1	\$12,500.00	1
9	FINN MIKE J & DONNA M	10949 32ND ST N	10949	32ND	ST N	LAKE ELMO MN 55042	1402921440011	\$26,200.00	\$13,700.00	1	\$12,500.00	1
10	MARTIN DANIEL D	10941 32ND ST N	10941	32ND	ST N	LAKE ELMO MN 55042	1402921440012	\$26,200.00	\$13,700.00	1	\$12,500.00	1
11	BOHJANEN PAUL R & KIMBERLY A	10929 32ND ST N	1481	THORNHILL	LN	WOODBURY MN 55125	1402921440013	\$26,200.00	\$13,700.00	1	\$12,500.00	1
12	LACHER RICHARD J	10917 32ND ST N	10917	32ND	ST N	LAKE ELMO MN 55042	1402921440014	\$26,200.00	\$13,700.00	1	\$12,500.00	1
13	PROKOSCH JOHN T & DEBRA J	10907 32ND ST N	10907	32ND	ST N	LAKE ELMO MN 55042	1402921440015	\$26,200.00	\$13,700.00	1	\$12,500.00	1
14	DOWNNS MICHAEL P & PATRICIA E KORLIN-DOWNS	10899 32ND ST N	10899	32ND	ST N	LAKE ELMO MN 55042	1402921440016	\$26,200.00	\$13,700.00	1	\$12,500.00	1
15	BOUTHILET COLLEEN M & TERRANCE	10891 32ND ST N	10891	32ND	ST N	LAKE ELMO MN 55042	1402921440017	\$26,200.00	\$13,700.00	1	\$12,500.00	1
16	KNUDSON SCOTT L & SARALYN S	10865 32ND ST N	10865	32ND	ST N	LAKE ELMO MN 55042	1402921440018	\$26,200.00	\$13,700.00	1	\$12,500.00	1
17	CITY OF LAKE ELMO		3800	LAVERNE	AVE N	LAKE ELMO MN 55042	1402921440024	\$13,700.00	\$13,700.00	1	\$0.00	0
18	SAVELKOLU RICHARD & SHANNON	10823 32ND ST N	10823	32ND	ST N	LAKE ELMO MN 55042	1402921440025	\$26,200.00	\$13,700.00	1	\$12,500.00	1
19	EMMONS BRETT H & JEAN I	3280 KLONDIKE AVE N	3280	KLONDIKE	AVE N	LAKE ELMO MN 55042	1402921430002	\$26,200.00	\$13,700.00	1	\$12,500.00	1
20	SCHMIDT WARREN ROBERT	3240 LAKE ELMO AVE N	3240	LAKE ELMO	AVE N	LAKE ELMO MN 55042	1302921330028	\$26,200.00	\$13,700.00	1	\$12,500.00	1
21	HOSEK MARIAN S	11120 32ND ST N	PO	BOX 166		LAKE ELMO MN 5042-016	1302921320089	\$26,200.00	\$13,700.00	1	\$12,500.00	1
22	ARDELL GEORGE HUTTON & DEBORAH JEAN SMITH-HUTTON LIV T	11108 32ND ST N	11108	32ND	ST N	LAKE ELMO MN 55042	1302921320062	\$26,200.00	\$13,700.00	1	\$12,500.00	1
23	PEACOCK BRUCE T & MARA K CROMBIE	11090 32ND ST N	11090	32ND	ST N	LAKE ELMO MN 55042	1302921320064	\$26,200.00	\$13,700.00	1	\$12,500.00	1
24	TUREK ELIZABETH A	11060 32ND ST N	11060	32ND	ST N	LAKE ELMO MN 55042	1302921320063	\$26,200.00	\$13,700.00	1	\$12,500.00	1
25	REED CORRINNE J	11020 32ND ST N	11020	32ND	ST N	LAKE ELMO MN 55042	1302921330039	\$26,200.00	\$13,700.00	1	\$12,500.00	1
26	VANDEN BRANDEN KURT & CATHERINE M VANDEN BRANDEN	11008 32ND ST N	11008	32ND	ST N	LAKE ELMO MN 55042	1302921330038	\$26,200.00	\$13,700.00	1	\$12,500.00	1
27	LOVE MARK J & JENNIFER M	10940 32ND ST N	10940	32ND	ST N	LAKE ELMO MN 55042	1402921440008	\$26,200.00	\$13,700.00	1	\$12,500.00	1
28	WALLACE JOSEPH	10920 32ND ST N	10920	32ND	ST N	LAKE ELMO MN 55042	1402921440019	\$26,200.00	\$13,700.00	1	\$12,500.00	1
29	R/L PROPERTY MANAGEMENT & DEVELOPMENT LLC	3394 LAKE ELMO AVE N	4605	LILY	AVE N	LAKE ELMO MN 55042	1302921320001	\$23,400.00	\$23,400.00	0	\$0.00	0
30	KNAAK WILLIAM	11057 33RD ST N	11057	33RD	ST N	LAKE ELMO MN 55042	1302921320003	\$26,200.00	\$13,700.00	1	\$12,500.00	1
31	JECHORT MARK H & JANE E	11035 33RD ST N	11035	33RD	ST N	LAKE ELMO MN 55042	1302921320070	\$26,200.00	\$13,700.00	1	\$12,500.00	1
32	BRUCHU JOSEPH ETAL	10919 33RD ST LN N	10919	33RD ST	LN N	LAKE ELMO MN 55042	1402921410014	\$26,200.00	\$13,700.00	1	\$12,500.00	1
33	GROBNER DAVID ALLEN & DEBRA K	10867 33RD ST N	10867	33RD	ST N	LAKE ELMO MN 55042	1402921410018	\$26,200.00	\$13,700.00	1	\$12,500.00	1
34	POTT MICHAEL W ETAL	10833 33RD ST N	PO	BOX 13		LAKE ELMO MN 55042	1402921410021	\$39,900.00	\$27,400.00	2	\$12,500.00	1
35	HAGBERG KEITH A	10825 33RD ST N	10825	33RD	ST N	LAKE ELMO MN 55042	1402921410020	\$39,900.00	\$27,400.00	2	\$12,500.00	1
36	KOTASEK RANDY T & DENISE V	3338 LANGLY CT N	3338	LANGLY	CT N	LAKE ELMO MN 55042	1302921320078	\$26,200.00	\$13,700.00	1	\$12,500.00	1
37	CITY OF LAKE ELMO	3303 LANGLY CT N	3800	LAVERNE	AVE N	LAKE ELMO MN 55042	1302921320069	\$26,200.00	\$13,700.00	1	\$12,500.00	1
38	DAHLBLOM STEVEN D	3343 LANGLY CT N	2971	JONQUIL	TRL N	LAKE ELMO MN 55042	1302921320081	\$104,800.00	\$54,800.00	4	\$50,000.00	4
39	DAHLBLOM STEVEN D		2971	JONQUIL	TRL N	LAKE ELMO MN 55042	1302921320080	\$13,700.00	\$13,700.00	1	\$0.00	0
40	DAHLBLOM STEVEN D		2971	JONQUIL	TRL N	LAKE ELMO MN 55042	1302921320076	\$13,700.00	\$13,700.00	1	\$0.00	0
41	KOHTZ CHRISTOPHER A & ALLISON	3327 LAMPERT AVE N	3327	LAMPERT	AVE N	LAKE ELMO MN 55042	1302921320066	\$26,200.00	\$13,700.00	1	\$12,500.00	1
42	HARDT NICHOLAS & ALANA	3309 LAMPERT AVE N	3309	LAMPERT	AVE N	LAKE ELMO MN 55042	1302921320067	\$26,200.00	\$13,700.00	1	\$12,500.00	1
43	SMITH JUSTIN A	3291 LAMPERT AVE N	3291	LAMPERT	AVE N	LAKE ELMO MN 55042	1302921320068	\$26,200.00	\$13,700.00	1	\$12,500.00	1
44	BERG JEFFREY J & DEBORAH L	3271 LAMPERT AVE N	3271	LAMPERT	AVE N	LAKE ELMO MN 55042	1302921320065	\$26,200.00	\$13,700.00	1	\$12,500.00	1
45	LENGYEL DAVID J	3330 LAMPERT AVE N	3330	LAMPERT	AVE N	LAKE ELMO MN 55042	1302921320071	\$26,200.00	\$13,700.00	1	\$12,500.00	1
46	ARNDT JARRIETT I & HOAGIE R	3316 LAMPERT AVE N	3316	LAMPERT	AVE N	LAKE ELMO MN 55042	1302921320072	\$26,200.00	\$13,700.00	1	\$12,500.00	1
47	WAGNER LINDA K	3286 LAMPERT AVE N	3286	LAMPERT	AVE N	LAKE ELMO MN 55042	1302921320073	\$26,200.00	\$13,700.00	1	\$12,500.00	1
48	VIGDAHL RODGER L & PATRICIA L	3268 LAMPERT AVE N	3268	LAMPERT	AVE N	LAKE ELMO MN 55042	1302921320074	\$26,200.00	\$13,700.00	1	\$12,500.00	1
49	KOTOWSKI SUSAN & TADEAUS	3331 KRAFT CIR N	3331	KRAFT	CIR N	LAKE ELMO MN 55042	1402921410009	\$26,200.00	\$13,700.00	1	\$12,500.00	1
50	LEIKAM DAVID S & ANNE M	3311 KRAFT CIR N	2641	LAKE ELMO	AVE N	LAKE ELMO MN 55042	1402921410010	\$26,200.00	\$13,700.00	1	\$12,500.00	1
51	PLATZ ROBERT T & PAMELA JB	3281 KRAFT CIR N	3281	KRAFT	CIR N	LAKE ELMO MN 55042	1402921410011	\$26,200.00	\$13,700.00	1	\$12,500.00	1
52	DESCHAMP-SCHMITZ MANDIE L	3265 KRAFT CIR N	3265	KRAFT	CIR N	LAKE ELMO MN 55042	1402921410012	\$26,200.00	\$13,700.00	1	\$12,500.00	1
53	VIVONA DANIEL M	3253 KRAFT CIR N	3253	KRAFT	CIR N	LAKE ELMO MN 55042	1402921440003	\$26,200.00	\$13,700.00	1	\$12,500.00	1
54	STEINKE DOUGLAS G & KATHRYN M SCHIFFERDECKER	3250 KRAFT CIR N	3250	KRAFT	CIR N	LAKE ELMO MN 55042	1402921440032	\$26,200.00	\$13,700.00	1	\$12,500.00	1
55	CITY OF LAKE ELMO		3800	LAVERNE	AVE N	LAKE ELMO MN 55042	1402921410023	\$13,700.00	\$13,700.00	1	\$0.00	0
56	STARK MICHAEL & ANNE	3284 KRAFT CIR N	3284	KRAFT	CIR N	LAKE ELMO MN 55042	1402921410022	\$26,200.00	\$13,700.00	1	\$12,500.00	1
57	MOLLERUD COLTON & STEPHANIE OLSON	3308 KRAFT CIR N	3308	KRAFT	CIR N	LAKE ELMO MN 55042	1402921410028	\$26,200.00	\$13,700.00	1	\$12,500.00	1
58	GORMAN JASON	3328 KRAFT CIR N	13233	22ND	ST N	STILLWATER MN 55082	1402921410027	\$26,200.00	\$13,700.00	1	\$12,500.00	1
59	JOHNSTON PETER A & NATALIE A	10925 33RD ST LN N	10925	33RD ST	LN N	LAKE ELMO MN 55042	1402921440020	\$26,200.00	\$13,700.00	1	\$12,500.00	1
60	SUSAN E MARKGRAF REV TRUST	10915 33RD ST LN N	10915	33RD ST	LN N	LAKE ELMO MN 55042	1402921440021	\$26,200.00	\$13,700.00	1	\$12,500.00	1
61	MISENER JEREMY P & HOLLY M	10906 33RD ST LN N	10906	33RD ST	LN N	LAKE ELMO MN 55042	1402921410015	\$26,200.00	\$13,700.00	1	\$12,500.00	1
62	BRENNAN MARTIN	10902 33RD ST LN N	10902	33RD ST	LN N	LAKE ELMO MN 55042	1402921410016	\$26,200.00	\$13,700.00	1	\$12,500.00	1
<b>TOTAL</b>							<b>\$1,670,750.00</b>	<b>\$920,750.00</b>	<b>65.5</b>		<b>\$750,000.00</b>	<b>60</b>

\*Properties in RED represent commercial lot or apartment building  
 \*\*Properties in BLACK represent residential lots  
 \*Properties in BLUE represent subdividable parcels

OLD VILLAGE PHASE 5 AND 6: STREET AND UTILITY IMPROVEMENTS  
UPPER 33RD STREET NORTH  
PRELIMINARY ASSESSMENT ROLL

NO.	NAME	ADDRESS	MAILING ADDRESS	PID	TOTAL ASSESSMENT AMOUNT	STREET AND DRAINAGE ASSESSMENT AMOUNT	STREET FRONT FOOTAGE	SANITARY SEWER ASSESSMENT AMOUNT	SAC
1	SIMICH CHAD & KELLY	11123 UPPER 33RD ST N	1340 PARIS TR N STILLWATER MN 55082	1302921320096	\$33,668.00	\$21,168.00	98	\$12,500.00	1
2	SIMICH CHAD & KELLY		1340 PARIS TR N STILLWATER MN 55082	1302921320085	\$5,400.00	\$5,400.00	25	\$0.00	0
3	LAKE ELMO INN INC		PO BOX 182 LAKE ELMO MN 55042	1302921320010	\$40,176.00	\$40,176.00	186	\$0.00	0
4	QWEST		1025 ELDORADO BLVD BROOMFIELD CO 80021	1302921320008	\$12,960.00	\$12,960.00	60	\$0.00	0
5	JOHNSON ELIZABETH M		PO BOX 403 LAKE ELMO MN 55042	1302921320009	\$12,960.00	\$12,960.00	60	\$0.00	0
6	NOVAK PAUL R		3413 LAKE ELMO AVE N LAKE ELMO MN 55042	1302921320007	\$32,400.00	\$32,400.00	150	\$0.00	0
7	JOHNSON ELIZABETH M		PO BOX 403 LAKE ELMO MN 55042	1302921320086	\$50,760.00	\$50,760.00	235	\$0.00	0
8	LAKE ELMO INN INC	11104 UPPER 33RD ST N	PO BOX 182 LAKE ELMO MN 55042	1302921320047	\$23,300.00	\$10,800.00	50	\$12,500.00	1
9	MARTIN DANIEL D	11090 UPPER 33RD ST N	10941 32ND ST N LAKE ELMO MN 55042	1302921320048	\$23,300.00	\$10,800.00	50	\$12,500.00	1
10	MARTIN DANIEL D		10941 32ND ST N LAKE ELMO MN 55042	1302921320049	\$10,800.00	\$10,800.00	50	\$0.00	0
11	NOVAK PAUL R	11074 UPPER 33RD ST N	3413 LAKE ELMO AVE N LAKE ELMO MN 55042	1302921320050	\$20,100.00	\$7,600.00	150	\$12,500.00	1
12	NOVAK PAUL R		3413 LAKE ELMO AVE N LAKE ELMO MN 55042	1302921320051	\$10,800.00	\$10,800.00	50	\$0.00	0
13	NOVAK PAUL R		3413 LAKE ELMO AVE N LAKE ELMO MN 55042	1302921320052	\$27,000.00	\$27,000.00	125	\$0.00	0
14	DUNN ROBERT B TRUST & SUSAN C HOPPER DUNN TRUS'	11018 UPPER 33RD ST N	PO BOX 153 LAKE ELMO MN 55042	1302921320090	\$20,100.00	\$7,600.00	125	\$12,500.00	1
15	MARTIN JILL M TRUST	11002 UPPER 33RD ST N	11002 UPPER33RD ST N LAKE ELMO MN 55042	1302921320054	\$20,100.00	\$7,600.00	76	\$12,500.00	1
16	LAKE ELMO INN INC	3442 LAKE ELMO AVE N	PO BOX 182 LAKE ELMO MN 55042	1302921320046	\$26,568.00	\$26,568.00	123	\$0.00	0
<b>TOTAL</b>					<b>\$370,392.00</b>	<b>\$295,392.00</b>		<b>\$75,000.00</b>	<b>6</b>

\*Properties in RED represent commercial lots

\*\*Properties in BLACK reprsent residential lots



OLD VILLAGE PHASE 5 AND 6: STREET AND UTILITY IMPROVEMENTS  
34TH STREET NORTH  
PRELIMINARY ASSESSMENT ROLL

NO.	NAME	ADDRESS	MAILING ADDRESS	PID	TOTAL ASSESSMENT AMOUNT	STREET AND DRAINAGE ASSESSMENT AMOUNT	STREET AND DRAINAGE IMPROVEMENT UNITS	SANITARY SEWER ASSESSMENT AMOUNT	SAC
1	JOHNSON STEPHEN D	11105 34TH ST N	2915 LAKE ELMO AVE N LAKE ELMO MN 55042	1302921320020	\$23,600.00	\$23,600.00	4	\$0.00	0
2	EVERSON ELIZABETH A	11075 34TH ST N	11075 34TH ST N LAKE ELMO MN 55042	1302921320018	\$18,400.00	\$5,900.00	1	\$12,500.00	1
3	GUSTAFSON STEPHEN TRS	11051 34TH ST N	11051 34TH ST N LAKE ELMO MN 55042	1302921320017	\$18,400.00	\$5,900.00	1	\$12,500.00	1
4	SCHILTZ GREGORY & COLLEEN	11098 34TH ST N	PO BOX 175 LAKE ELMO MN 55042	1302921320023	\$5,900.00	\$5,900.00	1	\$0.00	0
5	EDER JOEL R & JUDITH H	11082 34TH ST N	PO BOX 127 LAKE ELMO MN 55042	1302921320024	\$18,400.00	\$5,900.00	1	\$12,500.00	1
6	JOHN F SCHULTZ TRUST	11072 34TH ST N	721 10TH AVE N SOUTH ST PAUL MN 55075	1302921320015	\$18,400.00	\$5,900.00	1	\$12,500.00	1
7	CITY OF LAKE ELMO		3880 LAVERNE AVE N LAKE ELMO MN 55042	1302921320012	\$5,900.00	\$5,900.00	1	\$0.00	0
<b>TOTAL</b>					<b>\$109,000.00</b>	<b>\$59,000.00</b>	<b>10</b>	<b>\$50,000.00</b>	<b>4</b>

\*Properties in RED represent apartment building

\*\*Properties in BLACK represent residential lots

OLD VILLAGE PHASE 5 AND 6: STREET AND UTILITY IMPROVEMENTS  
36TH STREET AREA  
PRELIMINARY ASSESSMENT ROLL

NO.	NAME	ADDRESS	MAILING ADDRESS	PID	TOTAL ASSESSMENT AMOUNT	STREET AND DRAINAGE ASSESSMENT AMOUNT	SANITARY SEWER ASSESSMENT AMOUNT	SAC
1	ZIEMER MICHAEL R & KAREN A	11091 STILLWATER BLVD N	11091 STILLWATER BLVD N LAKE ELMO MN 55042	1302921230043	\$12,500.00	\$0.00	\$12,500.00	1
2	GROBNER JOSHUA A	11079 STILLWATER BLVD N	11079 STILLWATER BLVD N LAKE ELMO MN 55042	1302921230042	\$12,500.00	\$0.00	\$12,500.00	1
3	BAILLIE JOHN W II & MARGARET J GUILFOYLE	11051 STILLWATER BLVD N	11051 STILLWATER BLVD N LAKE ELMO MN 55042	1302921230067	\$37,500.00	\$0.00	\$37,500.00	3
4	EDWARD THOMAS GORMAN FAMILY LIVING TRUST	11011 STILLWATER BLVD N	12660 12TH ST N LAKE ELMO MN 55042	1302921230071	\$200,000.00	\$0.00	\$200,000.00	16
<b>TOTAL</b>					<b>\$262,500.00</b>	<b>\$0.00</b>	<b>\$262,500.00</b>	<b>21</b>

\*Properties in RED represent commercial lots

\*\*Properties in BLACK represent residential lots

OLD VILLAGE PHASE 5 AND 6: STREET AND UTILITY IMPROVEMENTS  
LAKE ELMO AVENUE (PRIVATE DRIVEWAY)  
PRELIMINARY ASSESSMENT ROLL

NO.	NAME	ADDRESS	MAILING ADDRESS	PID	TOTAL ASSESSMENT AMOUNT	WATERMAIN ASSESSMENT AMOUNT	SANITARY SEWER ASSESSMENT AMOUNT	SAC
1	WALDEMAR JAMES D & BARBARA W	3407 LAKE ELMO AVE N	3407 LAKE ELMO AVE N LAKE ELMO MN 55042	1302921310004	\$39,500.00	\$27,000.00	\$12,500.00	1
2	CHAPMAN JASON & ERIN	3409 LAKE ELMO AVE N	9580 53RD ST N LAKE ELMO MN 55042	1302921310019	\$39,500.00	\$27,000.00	\$12,500.00	1
3	SCHWARZ MICHAEL	3411 LAKE ELMO AVE N	4715 LAKE ELMO AVE N LAKE ELMO MN 55042	1302921310020	\$39,500.00	\$27,000.00	\$12,500.00	1
4	NOVAK PAUL R	3413 LAKE ELMO AVE N	3413 LAKE ELMO AVE N LAKE ELMO MN 55042	1302921310006	\$39,500.00	\$27,000.00	\$12,500.00	1
5	MACTAVISH KELSEY	3415 LAKE ELMO AVE N	3415 LAKE ELMO AVE N LAKE ELMO MN 55042	1302921310008	\$39,500.00	\$27,000.00	\$12,500.00	1
<b>TOTAL</b>					<b>\$197,500.00</b>	<b>\$135,000.00</b>	<b>\$62,500.00</b>	<b>5</b>

**CITY OF LAKE ELMO  
WASHINGTON COUNTY  
STATE OF MINNESOTA**

**RESOLUTION NO. 2021-031**

**A RESOLUTION ACCEPTING BIDS AND AWARDING A CONTRACT  
FOR THE OLD VILLAGE PHASE 5 AND 6 STREET, DRAINAGE, AND  
UTILITY IMPROVEMENTS**

**WHEREAS**, pursuant to an advertisement for bids for the Old Village Phase 5 and 6 Street, Drainage, and Utility Improvements, bids were received, opened, and tabulated according to law, and bids were received complying with the advertisement; and

**WHEREAS**, bids were tabulated, checked and summarized to verify that all requirements of the submittal were met; and

**WHEREAS**, the project engineer reviewed the bids and has provided a letter recommending the award of the contract to the lowest responsible bidder, A-1 Excavating, Inc., for the bid amount of \$6,488,157.83.

**NOW, THEREFORE, BE IT RESOLVED,**

1. That the Mayor and City Clerk are hereby authorized and directed to enter into a Contract in the accordance with the above ordered Project, in the amount of the Contractor's lowest responsible bid, and according to the plans and specifications thereof approved by the City Council.
2. The City Clerk is hereby authorized and directed to return forthwith to all bidders the deposits made with their bids, except that the deposits of the successful bidder and the next two lowest bidders shall be retained until a contract has been signed.

**ADOPTED BY THE LAKE ELMO CITY COUNCIL ON THE SIXTEENTH DAY OF  
MARCH, 2021.**

**CITY OF LAKE ELMO**

(Seal)  
ATTEST:

\_\_\_\_\_  
Julie Johnson  
City Clerk

By: \_\_\_\_\_  
Charles Cadenhead  
Mayor



Building a Better World  
for All of Us®

January 27, 2021

RE: Lake Elmo, MN  
Old Village Phase 5 & 6: Street, Drainage  
and Utility Improvements  
City Project No. 2019.116  
SEH No. LAKMO 151537

Mr. Jack Griffin  
City Engineer  
City of Lake Elmo  
3880 Laverne Ave. N.  
Lake Elmo, MN 55042

On Tuesday, January 27, 2021 at 10:00 a.m., seven (7) bids were received for the above-referenced project. The bids ranged from a high of \$11,199,274.25 to a low of \$6,488,157.83. The low bid was submitted by A-1 Excavating Inc. of Bloomer, WI in the amount of \$6,488,157.83.

	<b>Contractor</b>	<b>Total Bid</b>
1	A-1 Excavating Inc.	\$6,488,157.83
2	Geislinger & Sons	\$6,802,796.38
3	Ryan Contracting Co.	\$7,101,768.15
4	Park Construction Company	\$7,123,214.74
5	Meyer Contracting Inc.	\$7,266,529.20
6	S.M. Hentges & Sons, Inc.	\$8,867,505.60
7	Lametti and Sons, Inc.	\$11,199,274.25
	Engineer's Estimate	\$7,277,335.90

In reliance on our experience with A-1 Excavating Inc. and/or materials and information provided by the contractor, we have determined that according to their bonding agent, they presently have the financial ability to complete the project bid. SEH makes no representation or warranty as to the actual financial viability of the contractor or its ability to complete its work.

A-1 Excavating Inc. has completed similar work in Lake Elmo, including the Old Village Phase 2 and Phase 4 Street, Drainage and Utility Improvements, and in surrounding communities in the past. SEH engineers can conclude that A-1 Excavating Inc. has the experience and ability to complete a project of this size and scope. Accordingly, we recommend the project be awarded to A-1 Excavating Inc. in the amount of \$6,488,157.83.

Please contact me if you need any additional information or wish to discuss further. I can be reached at 651.490.2055, or via email at [shaupt@sehinc.com](mailto:shaupt@sehinc.com).

Sincerely,

  
Scott Haupt, PE  
Project Manager

ah

s:\ko\lakmo\151537\6-bid-const\ov 5 and 6 recommendation of award.docx

Engineers | Architects | Planners | Scientists

Short Elliott Hendrickson Inc., 3535 Vadnais Center Drive, St. Paul, MN 55110-5196

SEH is 100% employee-owned | [sehinc.com](http://sehinc.com) | 651.490.2000 | 800.325.2055 | 888.908.8166 fax



# TABULATION OF BIDS

OLD VILLAGE PHASE 5 AND 6: STREET, DRAINAGE AND UTILITY IMPROVEMENTS Lake Elmo, MN SEH No.: LAKMO 151537 Bid Date: Tuesday, January 27, 2021 at 10:00 a.m.				Engineer's Estimate	1 A-1 Excavating Inc.		2 Geislinger & Sons		3 Ryan Contracting Co.		4 Park Construction Company			
				\$7,277,335.90	\$6,488,157.83		\$6,802,796.38		\$7,101,768.15		\$7,123,214.74			
Item No.		Item	Unit	Est. Quantity	Unit Price	Total Price	Unit Price	Total Price	Unit Price	Total Price	Unit Price	Total Price	Unit Price	Total Price
1	2021.501	Mobilization	ls	1	\$347,000.00	\$347,000.00	\$369,660.00	\$369,660.00	\$307,000.00	\$307,000.00	\$350,000.00	\$350,000.00	\$435,500.00	\$435,500.00
2	2101.502	Clearing & Grubbing	acre	2.35	7,000.00	16,450.00	7,750.00	18,212.50	8,000.00	18,800.00	10,000.00	23,500.00	7,730.00	18,165.50
3	2101.502	Clearing	tree	99	500.00	49,500.00	215.00	21,285.00	215.00	21,285.00	800.00	79,200.00	211.00	20,889.00
4	2101.502	Grubbing	tree	104	200.00	20,800.00	135.00	14,040.00	130.00	13,520.00	400.00	41,600.00	129.00	13,416.00
5	2101.502	Remove Shrub	lf	534	4.00	2,136.00	8.00	4,272.00	5.00	2,670.00	20.00	10,680.00	5.15	2,750.10
6	2104.502	Remove Sign Type C	each	40	75.00	3,000.00	55.00	2,200.00	55.00	2,200.00	100.00	4,000.00	50.00	2,000.00
7	2104.503	Remove Water Main Pipe	lf	7062	10.00	70,620.00	2.00	14,124.00	5.00	35,310.00	6.00	42,372.00	13.00	91,806.00
8	2104.503	Remove Sewer Pipe (Sanitary) (3" or 4" Main)	lf	1029	12.00	12,348.00	4.00	4,116.00	5.00	5,145.00	5.00	5,145.00	15.40	15,846.60
9	2104.503	Remove Sewer Pipe (Storm)	lf	610	14.00	8,540.00	14.00	8,540.00	20.00	12,200.00	12.00	7,320.00	18.10	11,041.00
10	2104.503	Remove Concrete Curb & Gutter	lf	295	5.00	1,475.00	4.00	1,180.00	3.00	885.00	5.00	1,475.00	4.10	1,209.50
11	2104.503	Remove Fence	lf	1144	8.00	9,152.00	8.00	9,152.00	8.00	9,152.00	8.00	9,152.00	7.00	8,008.00
12	2104.504	Pulverize Bituminous Pavement (P)	sy	19952	2.00	39,904.00	3.00	59,856.00	3.00	59,856.00	4.00	79,808.00	2.60	51,875.20
13	2104.504	Remove Bituminous Driveway and Trail	sy	2283	4.00	9,132.00	3.50	7,990.50	3.00	6,849.00	6.00	13,698.00	7.35	16,780.05
14	2104.504	Remove Concrete Driveway Pavement	sy	571	8.00	4,568.00	4.50	2,569.50	3.50	1,998.50	10.00	5,710.00	14.10	8,051.10
15	2104.509	Salvage and Install Casting (Sanitary)	each	4	750.00	3,000.00	550.00	2,200.00	500.00	2,000.00	1,500.00	6,000.00	664.00	2,656.00
16	2104.509	Salvage and Install Casting (Storm)	each	4	750.00	3,000.00	550.00	2,200.00	500.00	2,000.00	1,000.00	4,000.00	664.00	2,656.00
17	2104.509	Remove Gate Valve & Box	each	17	300.00	5,100.00	150.00	2,550.00	75.00	1,275.00	300.00	5,100.00	197.00	3,349.00
18	2104.509	Remove Sanitary Structure	each	4	600.00	2,400.00	800.00	3,200.00	500.00	2,000.00	1,000.00	4,000.00	819.00	3,276.00
19	2104.509	Remove Catch Basin or Manhole (Storm)	each	2	500.00	1,000.00	700.00	1,400.00	400.00	800.00	850.00	1,700.00	548.00	1,096.00
20	2104.509	Remove Hydrant & Gate Valve Assembly	each	14	500.00	7,000.00	500.00	7,000.00	250.00	3,500.00	800.00	11,200.00	1,580.00	22,120.00
21	2104.511	Sawing Concrete Pavement (Full Depth)	lf	471	5.00	2,355.00	5.00	2,355.00	3.50	1,648.50	6.00	2,826.00	4.80	2,260.80
22	2104.513	Sawing Bit Pavement (Full Depth)	lf	1465	3.50	5,127.50	2.00	2,930.00	2.00	2,930.00	4.00	5,860.00	3.80	5,567.00
23	2104.518	Remove Concrete Walk	sf	457	2.50	1,142.50	2.00	914.00	1.00	457.00	1.00	457.00	1.80	822.60
24	2104.521	Salvage and Install Landscaping Rock or Mulch	sf	1150	2.00	2,300.00	4.00	4,600.00	5.00	5,750.00	2.00	2,300.00	10.50	12,075.00
25	2104.521	Salvage and Install Driveway Pavers	sf	495	25.00	12,375.00	19.00	9,405.00	15.00	7,425.00	20.00	9,900.00	22.20	10,989.00
26	2104.601	Remove Existing Sanitary Sewer Drain Field (32nd Street	ls	1	10,000.00	10,000.00	10,000.00	10,000.00	20,000.00	20,000.00	5,000.00	5,000.00	9,960.00	9,960.00
27	2104.601	Remove Existing Sanitary Sewer Drain Field & Pump	ls	1	20,000.00	20,000.00	15,000.00	15,000.00	30,000.00	30,000.00	8,000.00	8,000.00	13,600.00	13,600.00
28	2104.603	Salvage and Install Wood Fence	lf	105	12.00	1,260.00	33.00	3,465.00	31.00	3,255.00	40.00	4,200.00	30.00	3,150.00
29	2104.603	Abandon Water Main Pipe (In Railroad R/W)	lf	120	25.00	3,000.00	25.00	3,000.00	40.00	4,800.00	14.00	1,680.00	43.70	5,244.00
30	2104.621	Salvage and Install Block Retaining Wall	sf	158	40.00	6,320.00	28.00	4,424.00	20.00	3,160.00	30.00	4,740.00	38.40	6,067.20
31	2105.501	Common Excavation (EV) (Streets) (P)	cy	27965	15.00	419,475.00	14.00	391,510.00	14.00	391,510.00	20.00	559,300.00	13.65	381,722.25
32	2105.501	Common Excavation (EV) (Bioinfiltration Basin) (P)	cy	1950	25.00	48,750.00	13.00	25,350.00	12.50	24,375.00	20.00	39,000.00	10.20	19,890.00
33	2105.507	Subgrade Correction (EV) (Includes Select Granular	cy	1000	35.00	35,000.00	26.00	26,000.00	25.00	25,000.00	25.00	25,000.00	42.70	42,700.00
34	2105.522	Select Granular Borrow - Mod. 5% (CV) (P) (Streets)	cy	18482	23.00	425,086.00	17.00	314,194.00	17.00	314,194.00	25.00	462,050.00	25.10	463,898.20
35	2105.522	Select Granular Borrow - Mod. 5% (CV) (P) (Bioinfiltration	cy	980	23.00	22,540.00	19.00	18,620.00	18.00	17,640.00	35.00	34,300.00	22.30	21,854.00
36	2105.604	Geotextile Fabric, Type V	sy	6929	3.00	20,787.00	2.00	13,858.00	2.00	13,858.00	1.50	10,393.50	1.70	11,779.30
37	2111.503	Agg. Base, Cl. 6 (CV) (P)	cy	5528	32.00	176,896.00	28.00	154,784.00	27.00	149,256.00	30.00	165,840.00	33.10	182,976.80
38	2123.61	Street Sweeping	hour	102	150.00	15,300.00	150.00	15,300.00	140.00	14,280.00	120.00	12,240.00	162.00	16,524.00
39	2357.502	Bit. Material for Tack Coat	gal	1942	3.00	5,826.00	3.40	6,602.80	0.01	19.42	3.40	6,602.80	3.20	6,214.40
40	2360.501	Type SP 9.5 Wearing Course Mix (3,C) (Patching) (Lake	ton	60	175.00	10,500.00	160.00	9,600.00	240.00	14,400.00	145.00	8,700.00	105.00	6,300.00
41	2360.501	Type SP 9.5 Wearing Course Mix (2,B) (Driveways & Trail)	ton	510	125.00	63,750.00	108.00	55,080.00	155.00	79,050.00	96.00	48,960.00	125.00	63,750.00
42	2360.501	Type SP 12.5 Non- Wearing Course Mix (3,C)	ton	2764	75.00	207,300.00	69.00	190,716.00	69.00	190,716.00	67.00	185,188.00	76.00	210,064.00
43	2360.501	Type SP 9.5 Wearing Course Mix (3,C)	ton	2057	85.00	174,845.00	80.00	164,560.00	77.00	158,389.00	78.00	160,446.00	82.00	168,674.00



# TABULATION OF BIDS

OLD VILLAGE PHASE 5 AND 6: STREET, DRAINAGE AND UTILITY IMPROVEMENTS Lake Elmo, MN SEH No.: LAKMO 151537 Bid Date: Tuesday, January 27, 2021 at 10:00 a.m.					Engineer's Estimate	1 A-1 Excavating Inc.		2 Geislinger & Sons		3 Ryan Contracting Co.		4 Park Construction Company		
					\$7,277,335.90	\$6,488,157.83		\$6,802,796.38		\$7,101,768.15		\$7,123,214.74		
Item No.		Item	Unit	Est. Quantity	Unit Price	Total Price	Unit Price	Total Price	Unit Price	Total Price	Unit Price	Total Price	Unit Price	Total Price
44	2360.501	Pave and Remove 1.5" Thick 8' Wide Bituminous Wedge	ton	1189	100.00	118,900.00	103.00	122,467.00	95.00	112,955.00	101.00	120,089.00	103.00	122,467.00
45	2411.618	Wet Cast Block Retaining Wall	sf	1118	60.00	67,080.00	52.00	58,136.00	59.00	65,962.00	60.00	67,080.00	76.00	84,968.00
46	2451.609	Pipe Foundation Rock	ton	1530	40.00	61,200.00	9.00	13,770.00	28.00	42,840.00	30.00	45,900.00	43.40	66,402.00
47	2452.601	Temporary Shoring (For Retaining Wall Construction)	ls	1	32,000.00	32,000.00	30,000.00	30,000.00	15,000.00	15,000.00	15,000.00	15,000.00	63,300.00	63,300.00
48	2453.61	Exploratory Digging	hour	20	650.00	13,000.00	300.00	6,000.00	750.00	15,000.00	400.00	8,000.00	735.00	14,700.00
49	2501.502	12" CAS Safety Apron and Grate Design 3128	each	2	1,200.00	2,400.00	800.00	1,600.00	750.00	1,500.00	1,000.00	2,000.00	946.00	1,892.00
50	2501.502	15" RC Pipe Apron w/Trash Guard	each	10	1,400.00	14,000.00	1,000.00	10,000.00	1,000.00	10,000.00	1,500.00	15,000.00	1,220.00	12,200.00
51	2501.502	18" RC Pipe Apron w/Trash Guard	each	3	2,000.00	6,000.00	1,100.00	3,300.00	1,200.00	3,600.00	1,800.00	5,400.00	1,300.00	3,900.00
52	2501.502	24" RC Pipe Apron w/Trash Guard	each	2	2,000.00	4,000.00	1,475.00	2,950.00	1,500.00	3,000.00	2,000.00	4,000.00	1,760.00	3,520.00
53	2501.503	12" CAS Pipe Culvert	lf	15	65.00	975.00	65.00	975.00	100.00	1,500.00	50.00	750.00	91.80	1,377.00
54	2502.502	4" Concrete Headwall	each	3	400.00	1,200.00	500.00	1,500.00	550.00	1,650.00	350.00	1,050.00	627.00	1,881.00
55	2502.541	4" PVC Perf. Edge Drain w/ Backfill & Wrap	lf	4435	12.00	53,220.00	18.00	79,830.00	17.50	77,612.50	15.00	66,525.00	14.30	63,420.50
56	2502.602	Drainage Cleanout	each	39	300.00	11,700.00	390.00	15,210.00	325.00	12,675.00	200.00	7,800.00	197.00	7,683.00
57	2502.604	2" Rigid Insulation	sy	196	30.00	5,880.00	22.00	4,312.00	20.00	3,920.00	25.00	4,900.00	9.35	1,832.60
58	2503.503	8" PVC Pipe Sewer (C900) (DR-25)	lf	600	100.00	60,000.00	86.00	51,600.00	70.00	42,000.00	65.00	39,000.00	80.60	48,360.00
59	2503.503	8" PVC Pipe Sewer (SDR 26)	lf	5376	100.00	537,600.00	83.00	446,208.00	86.00	462,336.00	75.00	403,200.00	64.40	346,214.40
60	2503.503	14" PVC Pipe Sewer (C900) (DR-25)	lf	1422	130.00	184,860.00	121.00	172,062.00	90.00	127,980.00	100.00	142,200.00	92.30	131,250.60
61	2503.503	12" RC Pipe Sewer, Des 3006 CL V	lf	11	45.00	495.00	63.00	693.00	60.00	660.00	50.00	550.00	71.50	786.50
62	2503.503	15" RC Pipe Sewer, Des 3006 CL V	lf	3897	60.00	233,820.00	58.00	226,026.00	65.00	253,305.00	52.00	202,644.00	53.70	209,268.90
63	2503.503	18" RC Pipe Sewer, Des 3006 CL V	lf	666	65.00	43,290.00	64.00	42,624.00	70.00	46,620.00	55.00	36,630.00	54.20	36,097.20
64	2503.503	24" RC Pipe Sewer, Des 3006 CL III	lf	83	85.00	7,055.00	82.00	6,806.00	80.00	6,640.00	80.00	6,640.00	84.60	7,021.80
65	2503.601	Boring Pit #1	ls	1	25,000.00	25,000.00	39,000.00	39,000.00	34,000.00	34,000.00	100,000.00	100,000.00	96,000.00	96,000.00
66	2503.601	Boring Pit #2	ls	1	80,000.00	80,000.00	71,000.00	71,000.00	120,000.00	120,000.00	100,000.00	100,000.00	100,000.00	100,000.00
67	2503.601	Boring Pit #3	ls	1	60,000.00	60,000.00	60,000.00	60,000.00	100,000.00	100,000.00	100,000.00	100,000.00	190,000.00	190,000.00
68	2503.601	Connect to Existing Sanitary Structure (Type Special)	ls	1	20,000.00	20,000.00	26,000.00	26,000.00	25,500.00	25,500.00	100,000.00	100,000.00	27,500.00	27,500.00
69	2503.602	Connect to Existing Sanitary Structure	each	4	3,000.00	12,000.00	3,500.00	14,000.00	4,500.00	18,000.00	10,000.00	40,000.00	2,320.00	9,280.00
70	2503.602	Connect to Existing Sanitary Sewer Service (2" Pressure	each	12	800.00	9,600.00	300.00	3,600.00	700.00	8,400.00	1,500.00	18,000.00	1,380.00	16,560.00
71	2503.602	Connect to Existing Sanitary Sewer Service (4" Gravity)	each	1	800.00	800.00	300.00	300.00	250.00	250.00	1,500.00	1,500.00	1,190.00	1,190.00
72	2503.602	8"X4" PVC Wye, SDR 26	each	42	350.00	14,700.00	175.00	7,350.00	1,500.00	63,000.00	350.00	14,700.00	280.00	11,760.00
73	2503.602	8"X6" PVC Wye, SDR 26	each	15	450.00	6,750.00	250.00	3,750.00	2,000.00	30,000.00	500.00	7,500.00	357.00	5,355.00
74	2503.602	8"X4" PVC Wye, C900	each	6	800.00	4,800.00	330.00	1,980.00	2,000.00	12,000.00	750.00	4,500.00	414.00	2,484.00
75	2503.602	14"X4" PVC Wye, C900	each	9	100.00	900.00	800.00	7,200.00	2,500.00	22,500.00	1,500.00	13,500.00	911.00	8,199.00
76	2503.602	Tracer Wire Box - (at property line)	each	82	100.00	8,200.00	115.00	9,430.00	225.00	18,450.00	200.00	16,400.00	226.00	18,532.00
77	2503.602	Sanitary Sewer Manhole (w/ casting)	each	33	4,000.00	132,000.00	4,145.00	136,785.00	5,181.00	170,973.00	4,500.00	148,500.00	5,150.00	169,950.00
78	2503.602	Sanitary Cleanout Casting (R-1914-A)	each	6	500.00	3,000.00	450.00	2,700.00	450.00	2,700.00	6,000.00	36,000.00	538.00	3,228.00
79	2503.602	Saddle Tap for 1.25" HDPE to 8" PVC C900	each	3	400.00	1,200.00	750.00	2,250.00	2,500.00	7,500.00	1,000.00	3,000.00	1,630.00	4,890.00
80	2503.602	Saddle Tap for 1.25" HDPE to 14" PVC C900	each	9	400.00	3,600.00	770.00	6,930.00	2,700.00	24,300.00	1,200.00	10,800.00	1,660.00	14,940.00
81	2503.602	2" Pressure Cleanout & Curbstop Assembly	each	1	3,000.00	3,000.00	1,400.00	1,400.00	5,000.00	5,000.00	3,000.00	3,000.00	5,530.00	5,530.00
82	2503.602	1.25" Sanitary Curb Stop & Box	each	5	850.00	4,250.00	730.00	3,650.00	800.00	4,000.00	1,200.00	6,000.00	1,460.00	7,300.00
83	2503.602	2"X1.25" Fused Tee	each	5	200.00	1,000.00	525.00	2,625.00	275.00	1,375.00	400.00	2,000.00	1,140.00	5,700.00
84	2503.602	Curb Stop & Box Casting (R-1914-A)	each	12	500.00	6,000.00	450.00	5,400.00	500.00	6,000.00	1,000.00	12,000.00	528.00	6,336.00
85	2503.603	Sanitary Sewer 8" Outside Drop	lf	21.5	500.00	10,750.00	300.00	6,450.00	719.00	15,458.50	400.00	8,600.00	726.00	15,609.00
86	2503.603	Sanitary Sewer Manhole Extra Depth	lf	213.53	200.00	42,706.00	270.00	57,653.10	189.00	40,357.17	175.00	37,367.75	199.00	42,492.47



# TABULATION OF BIDS

<b>OLD VILLAGE PHASE 5 AND 6: STREET, DRAINAGE AND UTILITY IMPROVEMENTS</b>					Engineer's Estimate	1	2	3	4
Lake Elmo, MN						A-1 Excavating Inc.	Geislinger & Sons	Ryan Contracting Co.	Park Construction Company
SEH No.: LAKMO 151537						0	Address	Address	Address
Bid Date: Tuesday, January 27, 2021 at 10:00 a.m.					\$7,277,335.90	\$6,488,157.83	City, State Zip	City, State Zip	City, State Zip
							\$6,802,796.38	\$7,101,768.15	\$7,123,214.74

Item No.		Item	Unit	Est. Quantity	Unit Price	Total Price	Unit Price	Total Price	Unit Price	Total Price	Unit Price	Total Price	Unit Price	Total Price
87	2503.603	24" Casing Pipe (Jacked/Augered w/ 15" PVC SDR 26	lf	872	750.00	654,000.00	610.00	531,920.00	630.00	549,360.00	650.00	566,800.00	586.00	510,992.00
88	2503.603	36" Casing Pipe (Jacked/Augered w/ 15" PVC SDR 26	lf	97	1,000.00	97,000.00	800.00	77,600.00	868.00	84,196.00	1,000.00	97,000.00	781.00	75,757.00
89	2503.603	4" PVC Sanitary Service Pipe - Sch 40 w/ Tracer Wire	lf	1613	45.00	72,585.00	48.00	77,424.00	25.00	40,325.00	30.00	48,390.00	57.90	93,392.70
90	2503.603	6" PVC Sanitary Service Pipe - Sch 40 w/ Tracer Wire	lf	445	55.00	24,475.00	50.00	22,250.00	30.00	13,350.00	45.00	20,025.00	61.70	27,456.50
91	2503.603	1.25" HDPE Service Pipe w/ Tracer Wire	lf	370	35.00	12,950.00	50.00	18,500.00	15.00	5,550.00	30.00	11,100.00	41.30	15,281.00
92	2503.603	2" HDPE Forcemain w/ Cap	lf	30	60.00	1,800.00	50.00	1,500.00	40.00	1,200.00	40.00	1,200.00	54.20	1,626.00
93	2503.603	2" HDPE Sanitary Force Main (Horizontal Directional Drill)	lf	975	80.00	78,000.00	27.00	26,325.00	25.00	24,375.00	40.00	39,000.00	16.20	15,795.00
94	2503.603	Clean and Televiser Sanitary Sewer	lf	8280	2.50	20,700.00	2.00	16,560.00	1.50	12,420.00	2.00	16,560.00	1.30	10,764.00
95	2504.601	Temporary Sanitary Bypass Pumping of 3" Pressure Pipe	ls	1	20,000.00	20,000.00	2,500.00	2,500.00	6,000.00	6,000.00	15,000.00	15,000.00	12,400.00	12,400.00
96	2504.601	Temporary Water Service	ls	1	25,000.00	25,000.00	30,000.00	30,000.00	21,000.00	21,000.00	50,000.00	50,000.00	62,400.00	62,400.00
97	2504.602	1" Corporation Stop	each	82	400.00	32,800.00	195.00	15,990.00	1,400.00	114,800.00	350.00	28,700.00	1,010.00	82,820.00
98	2504.602	2" Corporation Stop	each	1	800.00	800.00	560.00	560.00	1,800.00	1,800.00	1,000.00	1,000.00	1,100.00	1,100.00
99	2504.602	1" Curb Stop & Box	each	82	450.00	36,900.00	350.00	28,700.00	250.00	20,500.00	350.00	28,700.00	1,240.00	101,680.00
100	2504.602	2" Curb Stop & Box	each	2	650.00	1,300.00	750.00	1,500.00	600.00	1,200.00	1,500.00	3,000.00	1,260.00	2,520.00
101	2504.602	Saddle Tap 8" HDPE w/ 1" Corporation Stop	each	5	850.00	4,250.00	475.00	2,375.00	2,500.00	12,500.00	250.00	1,250.00	1,620.00	8,100.00
102	2504.602	Connect to Existing Water Main	each	6	2,000.00	12,000.00	2,300.00	13,800.00	2,500.00	15,000.00	3,000.00	18,000.00	1,790.00	10,740.00
103	2504.602	16"X8" Wet Tap w/ 8" Gate Valve & Box	each	1	10,000.00	10,000.00	6,500.00	6,500.00	13,000.00	13,000.00	8,000.00	8,000.00	11,000.00	11,000.00
104	2504.602	Connect to Existing Water Service	each	71	250.00	17,750.00	150.00	10,650.00	100.00	7,100.00	400.00	28,400.00	241.00	17,111.00
105	2504.602	Adjust Gate Valve Box	each	5	200.00	1,000.00	300.00	1,500.00	300.00	1,500.00	500.00	2,500.00	135.00	675.00
106	2504.602	Hydrant	each	21	5,000.00	105,000.00	4,750.00	99,750.00	6,000.00	126,000.00	4,600.00	96,600.00	5,450.00	114,450.00
107	2504.602	6" Gate Valve & Box	each	28	1,600.00	44,800.00	1,600.00	44,800.00	1,500.00	42,000.00	2,000.00	56,000.00	1,860.00	52,080.00
108	2504.602	8" Gate Valve & Box	each	24	2,000.00	48,000.00	2,150.00	51,600.00	2,000.00	48,000.00	2,500.00	60,000.00	2,470.00	59,280.00
109	2504.603	1" Type K Copper Pipe	lf	1873	40.00	74,920.00	48.00	89,904.00	30.00	56,190.00	28.00	52,444.00	26.20	49,072.60
110	2504.603	2" Type K Copper Pipe	lf	50	55.00	2,750.00	63.00	3,150.00	50.00	2,500.00	60.00	3,000.00	55.80	2,790.00
111	2504.603	8" HDPE Watermain (Horizontal Directional Drill)	lf	1002	95.00	95,190.00	44.00	44,088.00	45.00	45,090.00	60.00	60,120.00	37.60	37,675.20
112	2504.603	6" Water Main DIP - CL 52 (Poly Encased)	lf	824	62.00	51,088.00	58.00	47,792.00	60.00	49,440.00	49.00	40,376.00	51.80	42,683.20
113	2504.603	8" Water Main DIP - CL 52 (Poly Encased)	lf	7605	60.00	456,300.00	64.00	486,720.00	70.00	532,350.00	50.00	380,250.00	55.60	422,838.00
114	2504.608	Ductile Iron Fittings	lb	4866	10.00	48,660.00	10.00	48,660.00	6.00	29,196.00	4.00	19,464.00	7.45	36,251.70
115	2506.501	Construct Overflow Control Structure (w/ Casting)	each	1	6,000.00	6,000.00	3,050.00	3,050.00	6,000.00	6,000.00	10,000.00	10,000.00	5,080.00	5,080.00
116	2506.501	Construct Drainage Structure Des. 402 (w/ Casting)	each	3	2,000.00	6,000.00	2,230.00	6,690.00	2,000.00	6,000.00	2,000.00	6,000.00	2,640.00	7,920.00
117	2506.501	Construct Drainage Structure Des. 404 (w/ Casting)	each	7	2,200.00	15,400.00	2,600.00	18,200.00	2,900.00	20,300.00	2,300.00	16,100.00	2,600.00	18,200.00
118	2506.501	Construct Drainage Structure Des. Des. 406 - 48" (w/ Casting)	each	32	3,000.00	96,000.00	3,125.00	100,000.00	3,400.00	108,800.00	2,500.00	80,000.00	3,410.00	109,120.00
119	2506.501	Construct Drainage Structure Des. 405 - 48" (w/ 4' Sump, MH Baffle & Casting)	each	2	6,000.00	12,000.00	10,530.00	21,060.00	10,000.00	20,000.00	10,000.00	20,000.00	11,500.00	23,000.00
120	2506.602	Connect to Existing Storm Structure	each	3	1,800.00	5,400.00	1,200.00	3,600.00	3,000.00	9,000.00	1,500.00	4,500.00	1,530.00	4,590.00
121	2506.602	Connect Drainage to Existing Storm Structure	each	1	500.00	500.00	700.00	700.00	1,200.00	1,200.00	500.00	500.00	837.00	837.00
122	2506.602	Connect to Existing Storm Pipe	each	1	1,500.00	1,500.00	900.00	900.00	1,400.00	1,400.00	1,500.00	1,500.00	1,970.00	1,970.00
123	2506.603	Clean and Televiser Storm Sewer	lf	4481	3.00	13,443.00	2.00	8,962.00	1.50	6,721.50	2.00	8,962.00	2.00	8,962.00
124	2511.501	Random Rip-Rap, Class III (includes Geotextile Fabric, Type IV)	cy	53	150.00	7,950.00	40.00	2,120.00	80.00	4,240.00	80.00	4,240.00	109.00	5,777.00
125	2521.501	26" Concrete Ribbon Curb	lf	7156	16.00	114,496.00	11.75	84,083.00	11.50	82,294.00	16.00	114,496.00	11.30	80,862.80
126	2531.501	Surmountable Concrete Curb & Gutter	lf	1010	17.00	17,170.00	14.00	14,140.00	16.00	16,160.00	16.00	16,160.00	13.50	13,635.00





## TABULATION OF BIDS

OLD VILLAGE PHASE 5 AND 6: STREET, DRAINAGE AND UTILITY IMPROVEMENTS					1	2	3	4						
Lake Elmo, MN SEH No.: LAKMO 151537 Bid Date: Tuesday, January 27, 2021 at 10:00 a.m.					Engineer's Estimate \$7,277,335.90	A-1 Excavating Inc. 0 \$6,488,157.83	Geislinger & Sons Address City, State Zip \$6,802,796.38	Ryan Contracting Co. Address City, State Zip \$7,101,768.15	Park Construction Company Address City, State Zip \$7,123,214.74					
Item No.		Item	Unit	Est. Quantity	Unit Price	Total Price	Unit Price	Total Price	Unit Price	Total Price	Unit Price	Total Price	Unit Price	Total Price
127	2531.501	B618 Concrete Curb & Gutter	lf	9546	17.00	162,282.00	14.50	138,417.00	15.50	147,963.00	16.00	152,736.00	14.00	133,644.00
128	2531.501	B624 Concrete Curb & Gutter	lf	60	20.00	1,200.00	31.00	1,860.00	33.00	1,980.00	30.00	1,800.00	30.40	1,824.00
129	2531.504	6" Concrete Driveway Pavement	sy	546	80.00	43,680.00	67.00	36,582.00	76.50	41,769.00	70.00	38,220.00	76.00	41,496.00
130	2531.504	8" Concrete Driveway Pavement	sy	77	85.00	6,545.00	97.00	7,469.00	116.50	8,970.50	95.00	7,315.00	100.00	7,700.00
131	2531.518	5" Concrete Walk	sf	1036	6.00	6,216.00	7.00	7,252.00	10.00	10,360.00	7.00	7,252.00	5.35	5,542.60
132	2531.618	6" Concrete Walk	sf	315	10.00	3,150.00	7.50	2,362.50	12.25	3,858.75	8.50	2,677.50	5.95	1,874.25
133	2540.602	Salvage and Install Mailbox Assembly	each	67	150.00	10,050.00	250.00	16,750.00	150.00	10,050.00	300.00	20,100.00	150.00	10,050.00
134	2104.503	Furnish and Install 4' Chain Link Fence	lf	220	30.00	6,600.00	33.00	7,260.00	31.00	6,820.00	40.00	8,800.00	30.00	6,600.00
135	2557.603	Furnish and Install 5' Chain Link Fence (Mounted on Wall)	lf	144	35.00	5,040.00	73.00	10,512.00	73.00	10,512.00	100.00	14,400.00	70.00	10,080.00
136	2563.601	Traffic Control	ls	1	20,000.00	20,000.00	49,500.00	49,500.00	10,000.00	10,000.00	25,000.00	25,000.00	9,450.00	9,450.00
137	2564.502	Salvage and Install Sign Type C	each	2	150.00	300.00	300.00	600.00	300.00	600.00	285.00	570.00	285.00	570.00
138	2564.602	Sign Type Special (Street Name Sign)	each	8	250.00	2,000.00	479.00	3,832.00	500.00	4,000.00	475.00	3,800.00	472.00	3,776.00
139	2564.613	Sign Type C	sf	269	60.00	16,140.00	44.00	11,836.00	44.00	11,836.00	43.00	11,567.00	42.30	11,378.70
140	2573.502	Silt Fence, Preassembled	lf	6648	4.00	26,592.00	1.75	11,634.00	2.00	13,296.00	1.00	6,648.00	1.95	12,963.60
141	2573.502	Temporary Rock Construction Entrance	each	10	1,000.00	10,000.00	500.00	5,000.00	1,800.00	18,000.00	500.00	5,000.00	2,020.00	20,200.00
142	2573.53	Storm Drain Inlet Protection	each	70	250.00	17,500.00	115.00	8,050.00	150.00	10,500.00	120.00	8,400.00	199.00	13,930.00
143	2574.507	Filter Topsoil Borrow (In-Place Volume) (P)	cy	710	45.00	31,950.00	37.00	26,270.00	35.00	24,850.00	50.00	35,500.00	21.00	14,910.00
144	2574.525	Common Topsoil Borrow (Pulverized) (LV)	cy	3322	35.00	116,270.00	34.00	112,948.00	33.00	109,626.00	35.00	116,270.00	31.50	104,643.00
145	2575.505	Sodding, Type Mineral	sy	13767	8.00	110,136.00	9.00	123,903.00	8.00	110,136.00	6.50	89,485.50	6.65	91,550.55
146	2575.508	Hydraulic Bonded Fiber Matrix	lb	5288	3.00	15,864.00	1.00	5,288.00	1.00	5,288.00	1.75	9,254.00	1.75	9,254.00
147	2575.523	Erosion Control Blanket Category 3N	sy	15825	3.00	47,475.00	1.50	23,737.50	1.50	23,737.50	1.85	29,276.25	1.90	30,067.50
148	2575.523	Sediment Control Log	lf	6675	4.00	26,700.00	3.50	23,362.50	3.25	21,693.75	3.00	20,025.00	4.05	27,033.75
149	2575.605	Seeding (Seed Mixture Type 21-113)	acre	1.51	6,000.00	9,060.00	3,140.00	4,741.40	2,800.00	4,228.00	650.00	981.50	709.00	1,070.59
150	2575.605	Seeding (Seed Mixture Type 25-141)	acre	2.99	6,000.00	17,940.00	4,900.00	14,651.00	4,500.00	13,455.00	840.00	2,511.60	832.00	2,487.68
151	2575.605	Seeding (Seed Mixture Type 33-261)	acre	0.38	6,000.00	2,280.00	5,710.00	2,169.80	5,500.00	2,090.00	1,245.00	473.10	1,270.00	482.60
152	2582.503	4" Solid Line White Epoxy	lf	210	2.00	420.00	3.00	630.00	1.75	367.50	1.65	346.50	1.65	346.50
153	2582.503	4" Double Solid Line Yellow Epoxy	lf	30	4.00	120.00	5.00	150.00	3.25	97.50	3.20	96.00	3.20	96.00
154	2582.503	24" Solid Line White Epoxy	lf	19	15.00	285.00	14.00	266.00	12.05	228.95	12.00	228.00	12.00	228.00
155	2582.518	Crosswalk Preformed Thermoplastic Ground In	sf	54	10.00	540.00	18.00	972.00	16.10	869.40	16.00	864.00	16.00	864.00
156	2582.518	Pavement Message Preformed Thermoplastic Ground In	sf	13.29	10.00	132.90	37.00	491.73	36.00	478.44	35.00	465.15	35.00	465.15
<b>TOTAL BID PRICE</b>						<b>\$7,277,335.90</b>		<b>\$6,488,157.83</b>		<b>\$6,802,796.38</b>		<b>\$7,101,768.15</b>		<b>\$7,123,214.74</b>



## TABULATION OF BIDS

5							6		7		8		9			
<b>OLD VILLAGE PHASE 5 AND 6: STREET, DRAINAGE AND UTILITY IMPROVEMENTS</b> Lake Elmo, MN SEH No.: LAKMO 151537 Bid Date: Tuesday, January 27, 2021 at 10:00 a.m.							Meyer Contracting Inc. Address City, State Zip \$7,266,529.20		S.M. Hentges & Sons, Inc. Address City, State Zip \$8,867,505.60		Lametti and Sons, Inc. Address City, State Zip \$11,199,274.25		Contractor Name Address City, State Zip \$0.00		Contractor Name Address City, State Zip \$0.00	
Item No.		Item	Unit	Est. Quantity	Unit Price	Total Price	Unit Price	Total Price	Unit Price	Total Price	Unit Price	Total Price	Unit Price	Total Price		
1	2021.501	Mobilization	ls	1	\$361,000.00	\$361,000.00	\$1,080,000.00	\$1,080,000.00	\$385,000.00	\$385,000.00		\$0.00		\$0.00		
2	2101.502	Clearing & Grubbing	acre	2.35	7,500.00	17,625.00	7,700.00	18,095.00	12,850.00	30,197.50		0.00		0.00		
3	2101.502	Clearing	tree	99	205.00	20,295.00	210.00	20,790.00	650.00	64,350.00		0.00		0.00		
4	2101.502	Grubbing	tree	104	125.00	13,000.00	128.00	13,312.00	150.00	15,600.00		0.00		0.00		
5	2101.502	Remove Shrub	lf	534	5.00	2,670.00	5.00	2,670.00	5.00	2,670.00		0.00		0.00		
6	2104.502	Remove Sign Type C	each	40	50.00	2,000.00	52.00	2,080.00	40.00	1,600.00		0.00		0.00		
7	2104.503	Remove Water Main Pipe	lf	7062	6.12	43,219.44	12.00	84,744.00	9.00	63,558.00		0.00		0.00		
8	2104.503	Remove Sewer Pipe (Sanitary) (3" or 4" Main)	lf	1029	10.19	10,485.51	10.00	10,290.00	9.00	9,261.00		0.00		0.00		
9	2104.503	Remove Sewer Pipe (Storm)	lf	610	18.95	11,559.50	14.00	8,540.00	18.00	10,980.00		0.00		0.00		
10	2104.503	Remove Concrete Curb & Gutter	lf	295	3.37	994.15	5.00	1,475.00	7.00	2,065.00		0.00		0.00		
11	2104.503	Remove Fence	lf	1144	7.00	8,008.00	8.00	9,152.00	7.00	8,008.00		0.00		0.00		
12	2104.504	Pulverize Bituminous Pavement (P)	sy	19952	6.38	127,293.76	2.00	39,904.00	2.10	41,899.20		0.00		0.00		
13	2104.504	Remove Bituminous Driveway and Trail	sy	2283	3.56	8,127.48	4.00	9,132.00	6.50	14,839.50		0.00		0.00		
14	2104.504	Remove Concrete Driveway Pavement	sy	571	6.59	3,762.89	6.00	3,426.00	10.00	5,710.00		0.00		0.00		
15	2104.509	Salvage and Install Casting (Sanitary)	each	4	626.66	2,506.64	550.00	2,200.00	1,150.00	4,600.00		0.00		0.00		
16	2104.509	Salvage and Install Casting (Storm)	each	4	904.99	3,619.96	540.00	2,160.00	1,150.00	4,600.00		0.00		0.00		
17	2104.509	Remove Gate Valve & Box	each	17	191.21	3,250.57	275.00	4,675.00	750.00	12,750.00		0.00		0.00		
18	2104.509	Remove Sanitary Structure	each	4	455.96	1,823.84	611.00	2,444.00	4,500.00	18,000.00		0.00		0.00		
19	2104.509	Remove Catch Basin or Manhole (Storm)	each	2	314.12	628.24	710.00	1,420.00	4,500.00	9,000.00		0.00		0.00		
20	2104.509	Remove Hydrant & Gate Valve Assembly	each	14	573.45	8,028.30	600.00	8,400.00	900.00	12,600.00		0.00		0.00		
21	2104.511	Sawing Concrete Pavement (Full Depth)	lf	471	3.62	1,705.02	5.50	2,590.50	4.00	1,884.00		0.00		0.00		
22	2104.513	Sawing Bit Pavement (Full Depth)	lf	1465	2.15	3,149.75	3.00	4,395.00	3.00	4,395.00		0.00		0.00		
23	2104.518	Remove Concrete Walk	sf	457	0.40	182.80	2.50	1,142.50	1.00	457.00		0.00		0.00		
24	2104.521	Salvage and Install Landscaping Rock or Mulch	sf	1150	0.44	506.00	2.20	2,530.00	4.00	4,600.00		0.00		0.00		
25	2104.521	Salvage and Install Driveway Pavers	sf	495	22.44	11,107.80	28.00	13,860.00	10.00	4,950.00		0.00		0.00		
26	2104.601	Remove Existing Sanitary Sewer Drain Field (32nd Street	ls	1	8,028.21	8,028.21	4,000.00	4,000.00	68,000.00	68,000.00		0.00		0.00		
27	2104.601	Remove Existing Sanitary Sewer Drain Field & Pump	ls	1	8,866.43	8,866.43	7,000.00	7,000.00	78,000.00	78,000.00		0.00		0.00		
28	2104.603	Salvage and Install Wood Fence	lf	105	30.00	3,150.00	31.00	3,255.00	30.00	3,150.00		0.00		0.00		
29	2104.603	Abandon Water Main Pipe (In Railroad R/W)	lf	120	8.00	960.00	44.00	5,280.00	160.00	19,200.00		0.00		0.00		
30	2104.621	Salvage and Install Block Retaining Wall	sf	158	38.00	6,004.00	40.00	6,320.00	30.00	4,740.00		0.00		0.00		
31	2105.501	Common Excavation (EV) (Streets) (P)	cy	27965	17.07	477,362.55	20.00	559,300.00	20.50	573,282.50		0.00		0.00		
32	2105.501	Common Excavation (EV) (Bioinfiltration Basin) (P)	cy	1950	15.59	30,400.50	10.00	19,500.00	20.50	39,975.00		0.00		0.00		
33	2105.507	Subgrade Correction (EV) (Includes Select Granular	cy	1000	32.96	32,960.00	37.00	37,000.00	20.50	20,500.00		0.00		0.00		
34	2105.522	Select Granular Borrow - Mod. 5% (CV) (P) (Streets)	cy	18482	17.50	323,435.00	25.00	462,050.00	24.50	452,809.00		0.00		0.00		
35	2105.522	Select Granular Borrow - Mod. 5% (CV) (P) (Bioinfiltration	cy	980	18.20	17,836.00	26.00	25,480.00	24.50	24,010.00		0.00		0.00		
36	2105.604	Geotextile Fabric, Type V	sy	6929	1.65	11,432.85	2.00	13,858.00	2.10	14,550.90		0.00		0.00		
37	2111.503	Agg. Base, Cl. 6 (CV) (P)	cy	5528	42.88	237,040.64	47.00	259,816.00	41.00	226,648.00		0.00		0.00		
38	2123.61	Street Sweeping	hour	102	150.00	15,300.00	172.00	17,544.00	147.00	14,994.00		0.00		0.00		
39	2357.502	Bit. Material for Tack Coat	gal	1942	3.40	6,602.80	2.75	5,340.50	0.01	19.42		0.00		0.00		
40	2360.501	Type SP 9.5 Wearing Course Mix (3,C) (Patching) (Lake	ton	60	262.46	15,747.60	140.00	8,400.00	185.00	11,100.00		0.00		0.00		
41	2360.501	Type SP 9.5 Wearing Course Mix (2,B) (Driveways & Trail)	ton	510	110.57	56,390.70	162.00	82,620.00	150.00	76,500.00		0.00		0.00		
42	2360.501	Type SP 12.5 Non- Wearing Course Mix (3,C)	ton	2764	67.00	185,188.00	84.00	232,176.00	67.00	185,188.00		0.00		0.00		
43	2360.501	Type SP 9.5 Wearing Course Mix (3,C)	ton	2057	78.00	160,446.00	91.00	187,187.00	75.00	154,275.00		0.00		0.00		



# TABULATION OF BIDS

OLD VILLAGE PHASE 5 AND 6: STREET, DRAINAGE AND UTILITY IMPROVEMENTS				5	6	7	8	9						
Lake Elmo, MN				Meyer Contracting Inc.	S.M. Hentges & Sons, Inc.	Lametti and Sons, Inc.	Contractor Name							
SEH No.: LAKMO 151537				Address	Address	Address	Address							
Bid Date: Tuesday, January 27, 2021 at 10:00 a.m.				City, State Zip	City, State Zip	City, State Zip	City, State Zip							
				\$7,266,529.20	\$8,867,505.60	\$11,199,274.25	\$0.00							
Item No.		Item	Unit	Est. Quantity	Unit Price	Total Price	Unit Price	Total Price	Unit Price	Total Price	Unit Price	Total Price	Unit Price	Total Price
44	2360.501	Pave and Remove 1.5" Thick 8' Wide Bituminous Wedge	ton	1189	101.00	120,089.00	130.00	154,570.00	95.00	112,955.00		0.00		0.00
45	2411.618	Wet Cast Block Retaining Wall	sf	1118	74.80	83,626.40	77.00	86,086.00	97.00	108,446.00		0.00		0.00
46	2451.609	Pipe Foundation Rock	ton	1530	40.69	62,255.70	47.00	71,910.00	72.00	110,160.00		0.00		0.00
47	2452.601	Temporary Shoring (For Retaining Wall Construction)	ls	1	10,148.35	10,148.35	37,000.00	37,000.00	15,000.00	15,000.00		0.00		0.00
48	2453.61	Exploratory Digging	hour	20	450.14	9,002.80	775.00	15,500.00	600.00	12,000.00		0.00		0.00
49	2501.502	12" CAS Safety Apron and Grate Design 3128	each	2	1,079.53	2,159.06	850.00	1,700.00	3,000.00	6,000.00		0.00		0.00
50	2501.502	15" RC Pipe Apron w/Trash Guard	each	10	1,556.93	15,569.30	1,300.00	13,000.00	2,000.00	20,000.00		0.00		0.00
51	2501.502	18" RC Pipe Apron w/Trash Guard	each	3	1,632.60	4,897.80	1,400.00	4,200.00	2,050.00	6,150.00		0.00		0.00
52	2501.502	24" RC Pipe Apron w/Trash Guard	each	2	1,960.76	3,921.52	1,650.00	3,300.00	2,200.00	4,400.00		0.00		0.00
53	2501.503	12" CAS Pipe Culvert	lf	15	81.10	1,216.50	87.00	1,305.00	265.00	3,975.00		0.00		0.00
54	2502.502	4" Concrete Headwall	each	3	361.04	1,083.12	340.00	1,020.00	1,450.00	4,350.00		0.00		0.00
55	2502.541	4" PVC Perf. Edge Drain w/ Backfill & Wrap	lf	4435	17.25	76,503.75	17.00	75,395.00	31.50	139,702.50		0.00		0.00
56	2502.602	Drainage Cleanout	each	39	561.79	21,909.81	235.00	9,165.00	420.00	16,380.00		0.00		0.00
57	2502.604	2" Rigid Insulation	sy	196	26.73	5,239.08	19.00	3,724.00	100.00	19,600.00		0.00		0.00
58	2503.503	8" PVC Pipe Sewer (C900) (DR-25)	lf	600	49.67	29,802.00	210.00	126,000.00	170.00	102,000.00		0.00		0.00
59	2503.503	8" PVC Pipe Sewer (SDR 26)	lf	5376	80.01	430,133.76	125.00	672,000.00	175.00	940,800.00		0.00		0.00
60	2503.503	14" PVC Pipe Sewer (C900) (DR-25)	lf	1422	97.46	138,588.12	168.00	238,896.00	178.00	253,116.00		0.00		0.00
61	2503.503	12" RC Pipe Sewer, Des 3006 CL V	lf	11	108.27	1,190.97	61.00	671.00	125.00	1,375.00		0.00		0.00
62	2503.503	15" RC Pipe Sewer, Des 3006 CL V	lf	3897	46.68	181,911.96	53.00	206,541.00	130.00	506,610.00		0.00		0.00
63	2503.503	18" RC Pipe Sewer, Des 3006 CL V	lf	666	59.64	39,720.24	55.00	36,630.00	135.00	89,910.00		0.00		0.00
64	2503.503	24" RC Pipe Sewer, Des 3006 CL III	lf	83	83.31	6,914.73	72.00	5,976.00	150.00	12,450.00		0.00		0.00
65	2503.601	Boring Pit #1	ls	1	34,000.00	34,000.00	43,000.00	43,000.00	140,000.00	140,000.00		0.00		0.00
66	2503.601	Boring Pit #2	ls	1	56,000.00	56,000.00	70,000.00	70,000.00	230,000.00	230,000.00		0.00		0.00
67	2503.601	Boring Pit #3	ls	1	50,000.00	50,000.00	60,000.00	60,000.00	140,000.00	140,000.00		0.00		0.00
68	2503.601	Connect to Existing Sanitary Structure (Type Special)	ls	1	25,000.00	25,000.00	28,000.00	28,000.00	4,500.00	4,500.00		0.00		0.00
69	2503.602	Connect to Existing Sanitary Structure	each	4	2,563.09	10,252.36	12,500.00	50,000.00	4,500.00	18,000.00		0.00		0.00
70	2503.602	Connect to Existing Sanitary Sewer Service (2" Pressure	each	12	614.52	7,374.24	510.00	6,120.00	1,800.00	21,600.00		0.00		0.00
71	2503.602	Connect to Existing Sanitary Sewer Service (4" Gravity)	each	1	393.62	393.62	12,100.00	12,100.00	1,500.00	1,500.00		0.00		0.00
72	2503.602	8"X4" PVC Wye, SDR 26	each	42	570.25	23,950.50	510.00	21,420.00	1,800.00	75,600.00		0.00		0.00
73	2503.602	8"X6" PVC Wye, SDR 26	each	15	662.51	9,937.65	570.00	8,550.00	1,850.00	27,750.00		0.00		0.00
74	2503.602	8"X4" PVC Wye, C900	each	6	731.25	4,387.50	810.00	4,860.00	1,250.00	7,500.00		0.00		0.00
75	2503.602	14"X4" PVC Wye, C900	each	9	1,274.03	11,466.27	1,200.00	10,800.00	1,800.00	16,200.00		0.00		0.00
76	2503.602	Tracer Wire Box - (at property line)	each	82	310.54	25,464.28	215.00	17,630.00	675.00	55,350.00		0.00		0.00
77	2503.602	Sanitary Sewer Manhole (w/ casting)	each	33	5,343.83	176,346.39	6,000.00	198,000.00	6,500.00	214,500.00		0.00		0.00
78	2503.602	Sanitary Cleanout Casting (R-1914-A)	each	6	912.61	5,475.66	340.00	2,040.00	900.00	5,400.00		0.00		0.00
79	2503.602	Saddle Tap for 1.25" HDPE to 8" PVC C900	each	3	1,410.72	4,232.16	620.00	1,860.00	980.00	2,940.00		0.00		0.00
80	2503.602	Saddle Tap for 1.25" HDPE to 14" PVC C900	each	9	1,446.13	13,015.17	700.00	6,300.00	1,000.00	9,000.00		0.00		0.00
81	2503.602	2" Pressure Cleanout & Curbstop Assembly	each	1	2,230.27	2,230.27	2,275.00	2,275.00	1,500.00	1,500.00		0.00		0.00
82	2503.602	1.25" Sanitary Curb Stop & Box	each	5	1,673.19	8,365.95	480.00	2,400.00	2,000.00	10,000.00		0.00		0.00
83	2503.602	2"X1.25" Fused Tee	each	5	1,463.65	7,318.25	510.00	2,550.00	1,800.00	9,000.00		0.00		0.00
84	2503.602	Curb Stop & Box Casting (R-1914-A)	each	12	2,352.71	28,232.52	620.00	7,440.00	2,100.00	25,200.00		0.00		0.00
85	2503.603	Sanitary Sewer 8" Outside Drop	lf	21.5	2,025.27	43,543.31	630.00	13,545.00	600.00	12,900.00		0.00		0.00
86	2503.603	Sanitary Sewer Manhole Extra Depth	lf	213.53	574.72	122,719.96	130.00	27,758.90	700.00	149,471.00		0.00		0.00



# TABULATION OF BIDS

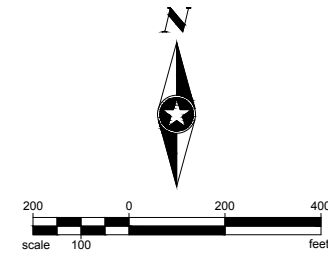
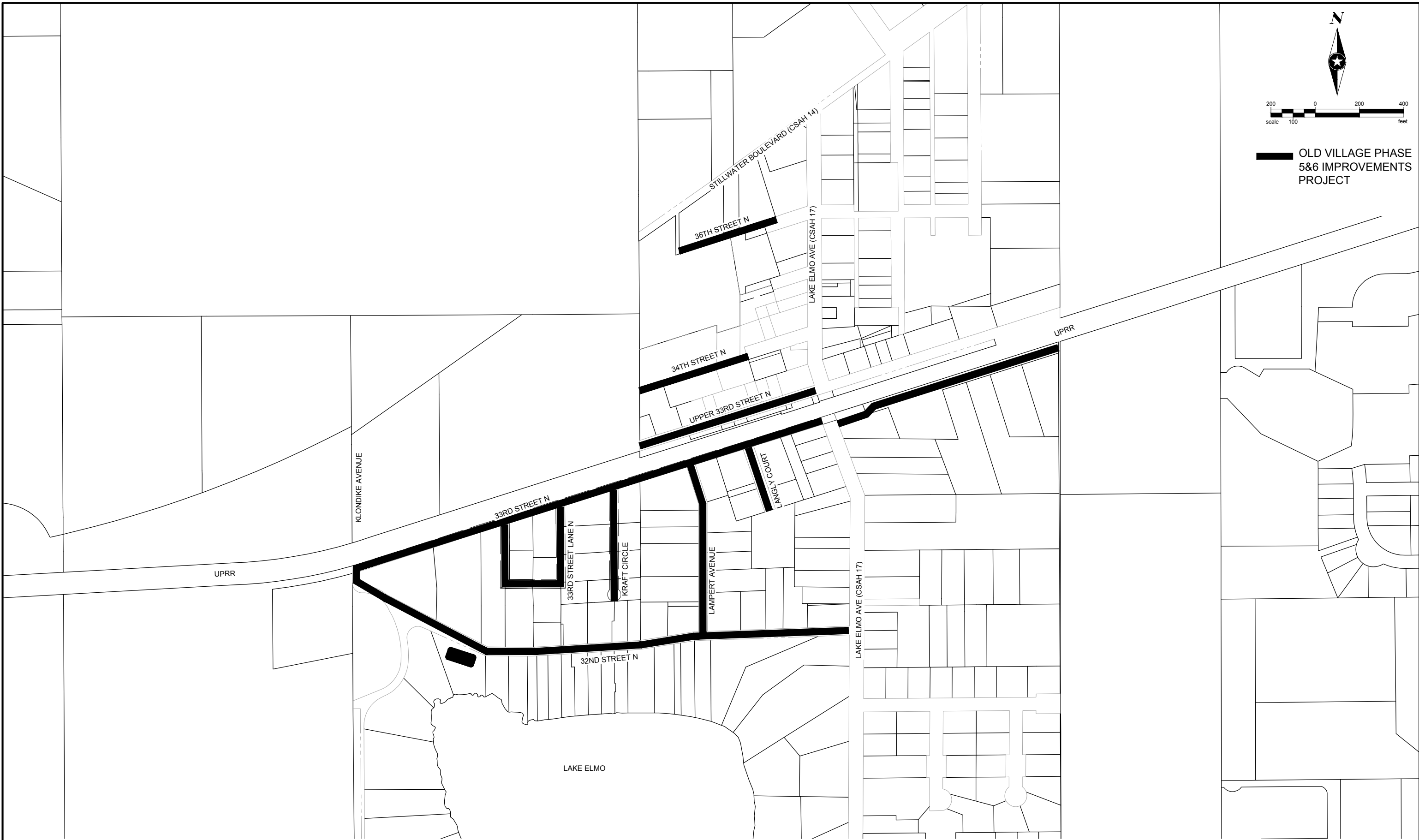
OLD VILLAGE PHASE 5 AND 6: STREET, DRAINAGE AND UTILITY IMPROVEMENTS				5	6	7	8	9						
Lake Elmo, MN SEH No.: LAKMO 151537 Bid Date: Tuesday, January 27, 2021 at 10:00 a.m.				Meyer Contracting Inc. Address City, State Zip \$7,266,529.20	S.M. Hentges & Sons, Inc. Address City, State Zip \$8,867,505.60	Lametti and Sons, Inc. Address City, State Zip \$11,199,274.25	Contractor Name Address City, State Zip \$0.00	Contractor Name Address City, State Zip \$0.00						
Item No.		Item	Unit	Est. Quantity	Unit Price	Total Price	Unit Price	Total Price	Unit Price	Total Price	Unit Price	Total Price	Unit Price	Total Price
87	2503.603	24" Casing Pipe (Jacked/Augered w/ 15" PVC SDR 26	lf	872	608.67	530,760.24	585.00	510,120.00	1,000.00	872,000.00		0.00		0.00
88	2503.603	36" Casing Pipe (Jacked/Augered w/ 15" PVC SDR 26	lf	97	799.57	77,558.29	780.00	75,660.00	1,300.00	126,100.00		0.00		0.00
89	2503.603	4" PVC Sanitary Service Pipe - Sch 40 w/ Tracer Wire	lf	1613	39.54	63,778.02	87.00	140,331.00	145.00	233,885.00		0.00		0.00
90	2503.603	6" PVC Sanitary Service Pipe - Sch 40 w/ Tracer Wire	lf	445	43.06	19,161.70	90.00	40,050.00	150.00	66,750.00		0.00		0.00
91	2503.603	1.25" HDPE Service Pipe w/ Tracer Wire	lf	370	46.70	17,279.00	95.00	35,150.00	125.00	46,250.00		0.00		0.00
92	2503.603	2" HDPE Forcemain w/ Cap	lf	30	46.87	1,406.10	35.00	1,050.00	250.00	7,500.00		0.00		0.00
93	2503.603	2" HDPE Sanitary Force Main (Horizontal Directional Drill)	lf	975	79.48	77,493.00	14.00	13,650.00	14.00	13,650.00		0.00		0.00
94	2503.603	Clean and Televiser Sanitary Sewer	lf	8280	1.45	12,006.00	1.40	11,592.00	1.50	12,420.00		0.00		0.00
95	2504.601	Temporary Sanitary Bypass Pumping of 3" Pressure Pipe	ls	1	31,702.71	31,702.71	4,000.00	4,000.00	92,500.00	92,500.00		0.00		0.00
96	2504.601	Temporary Water Service	ls	1	21,779.76	21,779.76	80,000.00	80,000.00	95,135.43	95,135.43		0.00		0.00
97	2504.602	1" Corporation Stop	each	82	969.03	79,460.46	570.00	46,740.00	1,300.00	106,600.00		0.00		0.00
98	2504.602	2" Corporation Stop	each	1	1,443.84	1,443.84	1,400.00	1,400.00	1,500.00	1,500.00		0.00		0.00
99	2504.602	1" Curb Stop & Box	each	82	658.46	53,993.72	670.00	54,940.00	1,400.00	114,800.00		0.00		0.00
100	2504.602	2" Curb Stop & Box	each	2	1,065.94	2,131.88	1,460.00	2,920.00	1,700.00	3,400.00		0.00		0.00
101	2504.602	Saddle Tap 8" HDPE w/ 1" Corporation Stop	each	5	1,091.54	5,457.70	570.00	2,850.00	1,900.00	9,500.00		0.00		0.00
102	2504.602	Connect to Existing Water Main	each	6	1,251.55	7,509.30	1,400.00	8,400.00	2,500.00	15,000.00		0.00		0.00
103	2504.602	16"X8" Wet Tap w/ 8" Gate Valve & Box	each	1	7,606.96	7,606.96	7,200.00	7,200.00	3,500.00	3,500.00		0.00		0.00
104	2504.602	Connect to Existing Water Service	each	71	504.00	35,784.00	400.00	28,400.00	1,200.00	85,200.00		0.00		0.00
105	2504.602	Adjust Gate Valve Box	each	5	139.75	698.75	230.00	1,150.00	700.00	3,500.00		0.00		0.00
106	2504.602	Hydrant	each	21	5,840.27	122,645.67	5,500.00	115,500.00	7,500.00	157,500.00		0.00		0.00
107	2504.602	6" Gate Valve & Box	each	28	2,124.80	59,494.40	1,540.00	43,120.00	2,200.00	61,600.00		0.00		0.00
108	2504.602	8" Gate Valve & Box	each	24	2,711.15	65,067.60	2,000.00	48,000.00	2,700.00	64,800.00		0.00		0.00
109	2504.603	1" Type K Copper Pipe	lf	1873	43.93	82,280.89	81.00	151,713.00	129.00	241,617.00		0.00		0.00
110	2504.603	2" Type K Copper Pipe	lf	50	62.02	3,101.00	85.00	4,250.00	135.00	6,750.00		0.00		0.00
111	2504.603	8" HDPE Watermain (Horizontal Directional Drill)	lf	1002	94.99	95,179.98	43.00	43,086.00	40.00	40,080.00		0.00		0.00
112	2504.603	6" Water Main DIP - CL 52 (Poly Encased)	lf	824	76.83	63,307.92	60.00	49,440.00	125.00	103,000.00		0.00		0.00
113	2504.603	8" Water Main DIP - CL 52 (Poly Encased)	lf	7605	56.04	426,184.20	85.00	646,425.00	152.00	1,155,960.00		0.00		0.00
114	2504.608	Ductile Iron Fittings	lb	4866	13.51	65,739.66	11.00	53,526.00	2.75	13,381.50		0.00		0.00
115	2506.501	Construct Overflow Control Structure (w/ Casting)	each	1	5,200.27	5,200.27	6,000.00	6,000.00	7,000.00	7,000.00		0.00		0.00
116	2506.501	Construct Drainage Structure Des. 402 (w/ Casting)	each	3	3,411.89	10,235.67	2,300.00	6,900.00	5,200.00	15,600.00		0.00		0.00
117	2506.501	Construct Drainage Structure Des. 404 (w/ Casting)	each	7	3,520.60	24,644.20	2,500.00	17,500.00	5,500.00	38,500.00		0.00		0.00
118	2506.501	Construct Drainage Structure Des. Des. 406 - 48" (w/ Casting)	each	32	4,645.45	148,654.40	3,300.00	105,600.00	6,000.00	192,000.00		0.00		0.00
119	2506.501	Construct Drainage Structure Des. 405 - 48" (w/ 4' Sump, MH Baffle & Casting)	each	2	14,708.27	29,416.54	11,000.00	22,000.00	16,500.00	33,000.00		0.00		0.00
120	2506.602	Connect to Existing Storm Structure	each	3	1,855.92	5,567.76	1,400.00	4,200.00	1,500.00	4,500.00		0.00		0.00
121	2506.602	Connect Drains to Existing Storm Structure	each	1	1,855.88	1,855.88	650.00	650.00	560.00	560.00		0.00		0.00
122	2506.602	Connect to Existing Storm Pipe	each	1	658.11	658.11	1,400.00	1,400.00	1,500.00	1,500.00		0.00		0.00
123	2506.603	Clean and Televiser Storm Sewer	lf	4481	1.45	6,497.45	4.50	20,164.50	1.50	6,721.50		0.00		0.00
124	2511.501	Random Rip-Rap, Class III (includes Geotextile Fabric, Type IV)	cy	53	162.62	8,618.86	124.00	6,572.00	134.00	7,102.00		0.00		0.00
125	2521.501	26" Concrete Ribbon Curb	lf	7156	15.05	107,697.80	15.00	107,340.00	12.75	91,239.00		0.00		0.00
126	2531.501	Surmountable Concrete Curb & Gutter	lf	1010	16.00	16,160.00	16.75	16,917.50	13.75	13,887.50		0.00		0.00



## TABULATION OF BIDS

OLD VILLAGE PHASE 5 AND 6: STREET, DRAINAGE AND UTILITY IMPROVEMENTS Lake Elmo, MN SEH No.: LAKMO 151537 Bid Date: Tuesday, January 27, 2021 at 10:00 a.m.				5	6	7	8	9						
				Meyer Contracting Inc. Address City, State Zip \$7,266,529.20	S.M. Hentges & Sons, Inc. Address City, State Zip \$8,867,505.60	Lametti and Sons, Inc. Address City, State Zip \$11,199,274.25	Contractor Name Address City, State Zip \$0.00	Contractor Name Address City, State Zip \$0.00						
Item No.		Item	Unit	Est. Quantity	Unit Price	Total Price	Unit Price	Total Price	Unit Price	Total Price	Unit Price	Total Price	Unit Price	Total Price
127	2531.501	B618 Concrete Curb & Gutter	lf	9546	16.60	158,463.60	19.00	181,374.00	14.25	136,030.50		0.00		0.00
128	2531.501	B624 Concrete Curb & Gutter	lf	60	34.62	2,077.20	33.00	1,980.00	33.00	1,980.00		0.00		0.00
129	2531.504	6" Concrete Driveway Pavement	sy	546	62.46	34,103.16	94.00	51,324.00	70.00	38,220.00		0.00		0.00
130	2531.504	8" Concrete Driveway Pavement	sy	77	85.81	6,607.37	102.00	7,854.00	92.50	7,122.50		0.00		0.00
131	2531.518	5" Concrete Walk	sf	1036	6.57	6,806.52	5.75	5,957.00	7.30	7,562.80		0.00		0.00
132	2531.618	6" Concrete Walk	sf	315	8.22	2,589.30	11.50	3,622.50	8.95	2,819.25		0.00		0.00
133	2540.602	Salvage and Install Mailbox Assembly	each	67	150.00	10,050.00	153.00	10,251.00	150.00	10,050.00		0.00		0.00
134	2104.503	Furnish and Install 4' Chain Link Fence	lf	220	30.00	6,600.00	30.00	6,600.00	30.00	6,600.00		0.00		0.00
135	2557.603	Furnish and Install 5' Chain Link Fence (Mounted on Wall)	lf	144	70.00	10,080.00	71.00	10,224.00	70.00	10,080.00		0.00		0.00
136	2563.601	Traffic Control	ls	1	9,450.00	9,450.00	16,000.00	16,000.00	2,500.00	2,500.00		0.00		0.00
137	2564.502	Salvage and Install Sign Type C	each	2	285.00	570.00	290.00	580.00	290.00	580.00		0.00		0.00
138	2564.602	Sign Type Special (Street Name Sign)	each	8	472.46	3,779.68	482.00	3,856.00	500.00	4,000.00		0.00		0.00
139	2564.613	Sign Type C	sf	269	42.27	11,370.63	44.00	11,836.00	56.00	15,064.00		0.00		0.00
140	2573.502	Silt Fence, Preassembled	lf	6648	1.90	12,631.20	2.00	13,296.00	7.50	49,860.00		0.00		0.00
141	2573.502	Temporary Rock Construction Entrance	each	10	1,232.66	12,326.60	1,750.00	17,500.00	4,500.00	45,000.00		0.00		0.00
142	2573.53	Storm Drain Inlet Protection	each	70	175.71	12,299.70	175.00	12,250.00	225.00	15,750.00		0.00		0.00
143	2574.507	Filter Topsoil Borrow (In-Place Volume) (P)	cy	710	72.57	51,524.70	58.00	41,180.00	49.00	34,790.00		0.00		0.00
144	2574.525	Common Topsoil Borrow (Pulverized) (LV)	cy	3322	54.40	180,716.80	38.00	126,236.00	36.00	119,592.00		0.00		0.00
145	2575.505	Sodding, Type Mineral	sy	13767	6.50	89,485.50	6.60	90,862.20	6.00	82,602.00		0.00		0.00
146	2575.508	Hydraulic Bonded Fiber Matrix	lb	5288	1.70	8,989.60	1.75	9,254.00	2.20	11,633.60		0.00		0.00
147	2575.523	Erosion Control Blanket Category 3N	sy	15825	1.85	29,276.25	1.90	30,067.50	2.20	34,815.00		0.00		0.00
148	2575.523	Sediment Control Log	lf	6675	3.95	26,366.25	4.00	26,700.00	2.50	16,687.50		0.00		0.00
149	2575.605	Seeding (Seed Mixture Type 21-113)	acre	1.51	625.00	943.75	640.00	966.40	3,000.00	4,530.00		0.00		0.00
150	2575.605	Seeding (Seed Mixture Type 25-141)	acre	2.99	815.00	2,436.85	830.00	2,481.70	3,000.00	8,970.00		0.00		0.00
151	2575.605	Seeding (Seed Mixture Type 33-261)	acre	0.38	1,248.00	474.24	1,275.00	484.50	3,000.00	1,140.00		0.00		0.00
152	2582.503	4" Solid Line White Epoxy	lf	210	1.65	346.50	1.70	357.00	1.65	346.50		0.00		0.00
153	2582.503	4" Double Solid Line Yellow Epoxy	lf	30	3.20	96.00	3.25	97.50	3.20	96.00		0.00		0.00
154	2582.503	24" Solid Line White Epoxy	lf	19	12.00	228.00	12.25	232.75	12.00	228.00		0.00		0.00
155	2582.518	Crosswalk Preformed Thermoplastic Ground In	sf	54	16.00	864.00	17.00	918.00	16.00	864.00		0.00		0.00
156	2582.518	Pavement Message Preformed Thermoplastic Ground In	sf	13.29	35.00	465.15	35.00	465.15	35.00	465.15		0.00		0.00
<b>TOTAL BID PRICE</b>						<b>\$7,266,529.20</b>		<b>\$8,867,505.60</b>		<b>\$11,199,274.25</b>		<b>\$0.00</b>		<b>\$0.00</b>

Save: 3/5/2020 9:48 AM zstafstien Plot\_36/2020 7:27 AM S:\KOLLL akmo\1515375-final-dsgn\51-drawings\10-Civil\carddwg\exhibit\Location Map.dwg



**OLD VILLAGE PHASE  
5&6 IMPROVEMENTS  
PROJECT**

**SEH**  
 PHONE: 651.490.2000  
 3535 VADNAIS CENTER DRIVE  
 ST. PAUL, MN 55110-5196  
 www.sehinc.com

FILE NO.  
151537  
 DATE:  
3/3/2020

**LOCATION MAP  
LAKE ELMO OLD VILLAGE  
IMPROVEMENTS PHASE 5 & 6**

**EXHIBIT  
NO.  
1**

PROJECT SCHEDULE  
CITY OF LAKE ELMO

**FOCUS** ENGINEERING, inc.

OLD VILLAGE PHASE 5 AND 6 IMPROVEMENTS  
PROJECT NO. 2019.116

Cara Geheren, P.E. 651.300.4261  
Jack Griffin, P.E. 651.300.4264  
Ryan Stempksi, P.E. 651.300.4267  
Chad Isakson, P.E. 651.300.4283

---

JULY 2, 2019	Council ordered preparation of Preliminary Design and Topographic Survey.
JUNE 16, 2020	Presentation of Preliminary Design. Council ordered preparation of a Feasibility Report and preparation of plans and specifications.
DECEMBER 16, 2020	Council approved Plans and Specifications and ordered Advertisement for Bids.
JANUARY 27, 2021	Received contractor bids.
FEBRUARY 16, 2021	Presentation of Feasibility Report. Council accepts Report and calls for Improvement Hearing.
MARCH 16, 2021	Publi Improvement Hearing. Council Orders the Improvement; accepts Bids and awards Contract.
APRIL, 2021	Conduct Pre-Construction Meeting and issue Notice to Proceed.
SEPTEMBER 7, 2021	Council Declares Costs to be Assessed and Calls for Hearing on Assessment.
OCTOBER 5, 2021	Final Assessment Hearing. Council Adopts Final Assessments.
OCTOBER 14, 2022	Substantial Completion (Phase 5 and 6).
JULY 28, 2023	Final Completion (Phase 5 and 6).