



## STAFF REPORT

DATE: June 20, 2023

### **CONSENT**

**AGENDA ITEM:** Approve Tana Ridge Curb Design Revisions for the 2023 Street Improvements

**SUBMITTED BY:** Jack Griffin, City Engineer

**REVIEWED BY:** Kristina Handt, City Administrator  
Marty Powers, Public Works Director  
Mike Rusenovich, Project Engineer

---

**ISSUE BEFORE COUNCIL:** Should the City Council approve a design change to revise the curb and gutter type used in the Tana Ridge subdivision for the 2023 Street Improvements?

**BACKGROUND:** On April 18, 2023, the City Council awarded a construction contract for the 2023 Street Improvements project, including street and drainage improvements within the Tana Ridge neighborhood and the Fields of St. Croix 2nd Addition, consisting of approximately 12,300 feet (2.3 miles) of local streets. The improvements include the installation of new concrete curb and gutter to replace the existing bituminous curb. As part of the project design a combination of surmountable concrete curb and gutter and barrier concrete curb and gutter (B418) were used in the approved design.

More specifically, surmountable curb was proposed along the frontage of each property, and barrier curb was proposed as requested by Public Works along each inside radii, at catch basins, at corner radii, and along open space/Outlot property (see attached Exhibits 1 and 2 – Original Project Design). Barrier curb provides improved drainage characteristics, helps to guide snow plow operations at critical locations, and helps to maintain vehicle traffic on the paved roadway surface while driving and when parking.

**PROPOSAL DETAILS/ANALYSIS:** At the June 6, 2023 City Council meeting, in response to a petition and property owner communications to staff/Council, the Council directed staff to revise the curb type layout for the Tana Ridge neighborhood, by increasing the use of surmountable curb when deemed acceptable to Public Works. Following the meeting, staff reviewed and revised the project design accordingly. The attached Exhibit 3 depicts the revised design, after replacing 1,918 feet of barrier curb with surmountable curb. In the revised design the use of barrier curb was limited to inside radii, at catch basins (not shown), and at corner radii.

Staff reviewed the proposed changes with the project contractor and it was jointly determined that a formal change order would not be necessary to implement changes. Staff is therefore only seeking Council approval for this Council directed change in the design. The contractor intends to begin curb installation on June 21, 2023.

**FISCAL IMPACT:** Approval of this design change will alter the final installed quantities for the different curb types. The estimated price change from barrier curb to surmountable curb is 1,918 LF x \$0.19 per LF; or \$364.42.

**RECOMMENDATION:** Staff is recommending that the City Council approve, *as part of the consent agenda*, a change in the curb design/layout for the Tana Ridge neighborhood as depicted in the attached Exhibit 3 – Revised Design, for the 2023 Street Improvements. If removed from the *consent agenda*, the recommended motion for this action is as follows:

***“Move to approve the revised curb design/layout for the Tana Ridge neighborhood as depicted in the attached Exhibit 3 – Revised Design, for the 2023 Street Improvements.”***

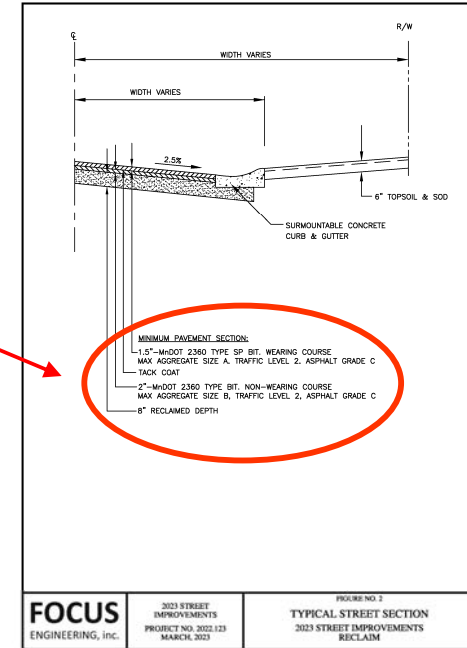
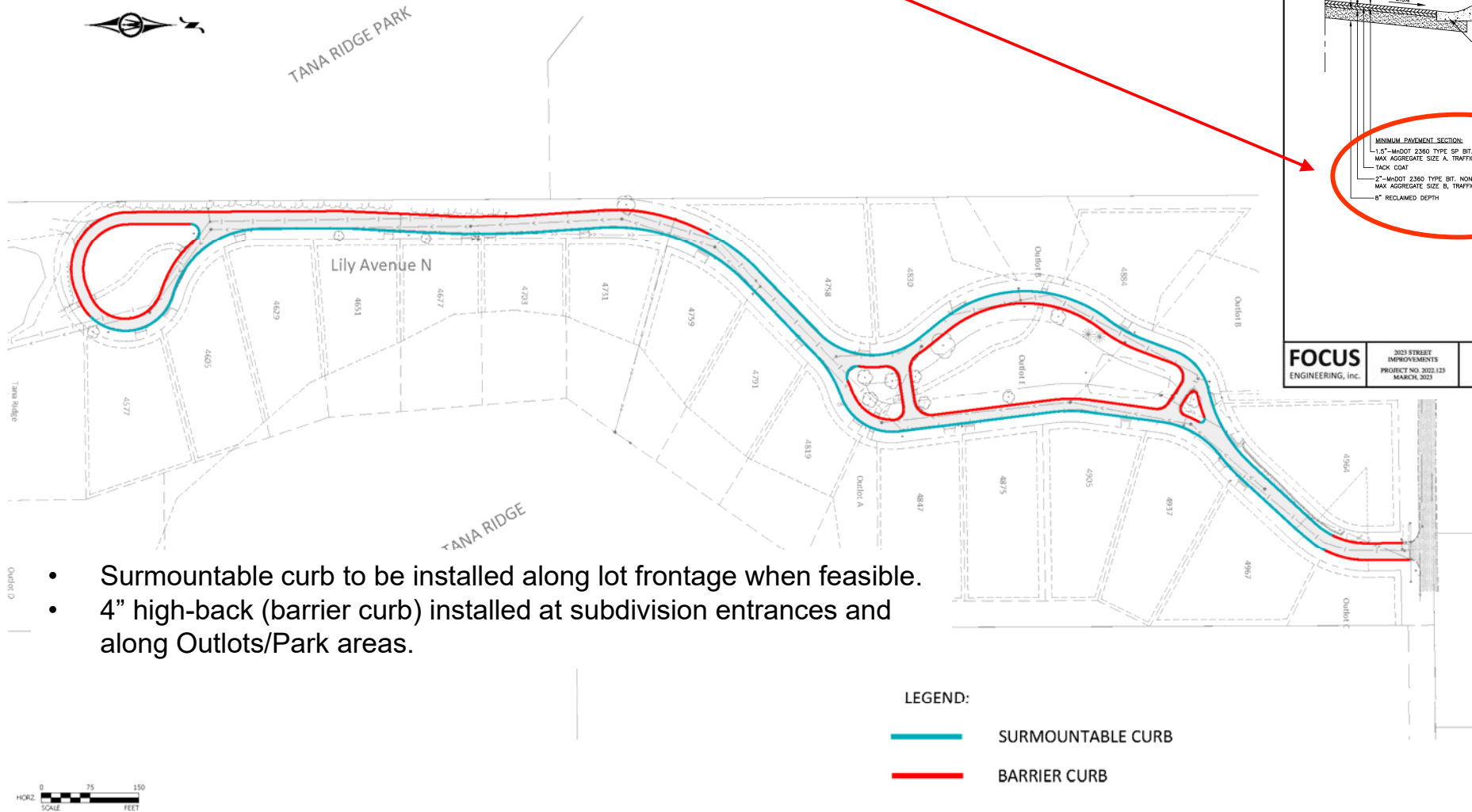
**ATTACHMENTS:**

1. Exhibit 1 – Original Curb Design for Tana Ridge.
2. Exhibit 2 – Original Curb Design for Fields of St. Croix 2nd Addition.
3. Exhibit 3 – Proposed Curb Design for Tana Ridge.

# EXHIBIT 1 - ORIGINAL CURB DESIGN TANA RIDGE NEIGHBORHOOD

## 2023 Street Improvements

- 8" Full Depth reclamation to create a recycled aggregate base.
- 2" Bituminous Base Course.
- 1-1/2" Bituminous Wear Course.



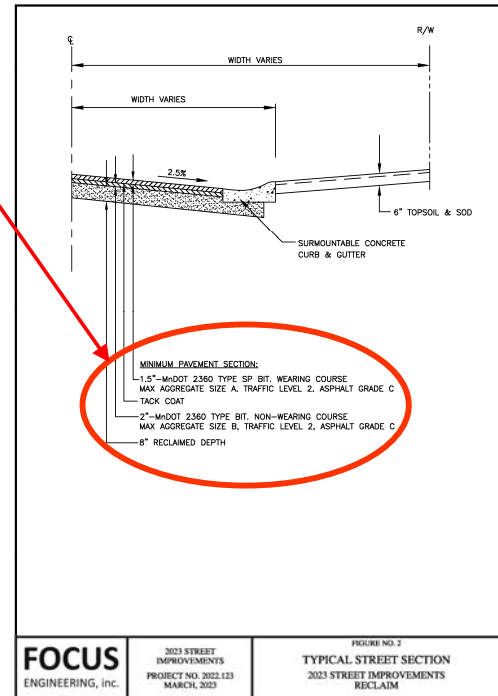
# EXHIBIT 2 - ORIGINAL CURB DESIGN FIELDS OF ST. CROIX 2ND ADDITION

## 2023 Street Improvements



- 8" Full Depth reclamation to create a recycled aggregate base.
- 2" Bituminous Base Course.
- 1-1/2" Bituminous Wear Course.

- Surmountable curb to be installed along lot frontage when feasible.
- 4" high-back (barrier curb) installed at subdivision entrances and along Outlots/Park areas.



- LEGEND:**
- SURMOUNTABLE CURE
  - BARRIER CURB

- Entrance one-way streets widened to 19 ft. B-B (existing is 17 ft.).

MARCH 7, 2023

