

**CITY OF LAKE ELMO  
WASHINGTON COUNTY  
STATE OF MINNESOTA**

**RESOLUTION NO. 2023-069**

**A RESOLUTION TO WASHINGTON COUNTY AND TO THE  
MINNESOTA DEPARTMENT OF TRANSPORTATION IN SUPPORT OF  
THE DESIGNATION OF COUNTY STATE AID HIGHWAY 15  
IN THE CITY OF LAKE ELMO**

**WHEREAS**, the Minnesota Department of Transportation and Washington County have recently completed a project to construct a new grade-separated interchange to replace the previous at-grade signalized intersection at the intersection of Trunk Highway 36 and County State Aid Highway 15, also known as Manning Avenue North, on the boundary of the Cities of Stillwater and Lake Elmo; and;

**WHEREAS**, Washington County has been notified that the current designation of CSAH 15 extends only to Trunk Highway 36 as per the prior signalized configuration, thus leaving a gap between the former at-grade traffic signal and the new eastbound ramp intersection located approximately 430 feet south of the former at-grade traffic signal; and;

**WHEREAS**, the City of Lake Elmo has been notified that Washington County intends to officially designate Manning Avenue North as a portion of Washington County State Aid Highway No. 15 for its length between its prior endpoint at Trunk Highway 36 and the newly constructed Trunk Highway 36 eastbound ramps; and;

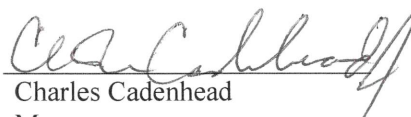
**WHEREAS**, portions of the proposed County State Aid Highway designation exist within the corporate limits of the City of Lake Elmo.

**NOW, THEREFORE, BE IT RESOLVED,**

1. By the City Council of the City of Lake Elmo that the designation and numbering described above is in all things approved.


**ADOPTED BY THE LAKE ELMO CITY COUNCIL ON THE SECOND DAY OF AUGUST, 2023.**

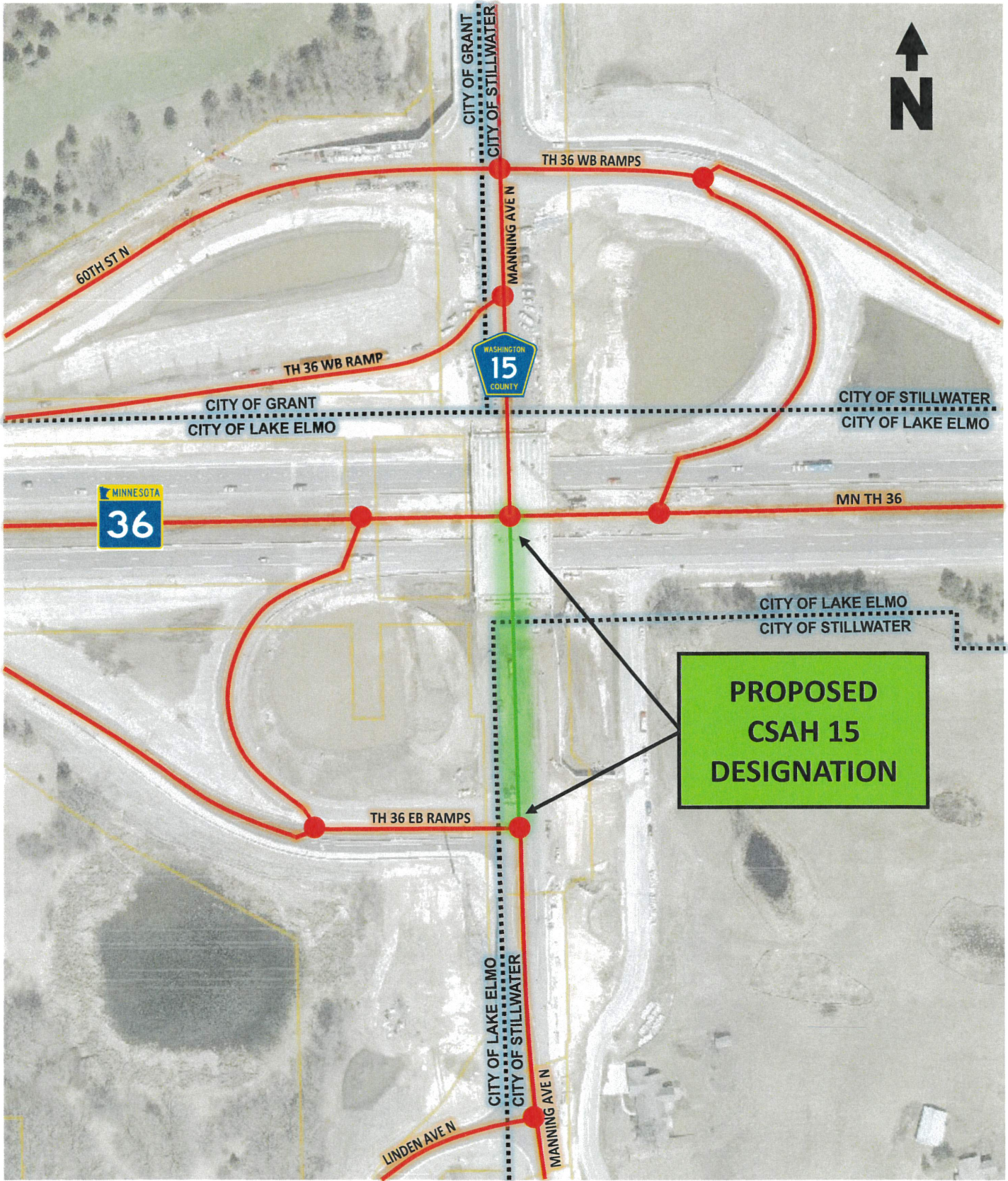
**CITY OF LAKE ELMO**

By:   
Charles Cadenhead  
Mayor

(Seal)

ATTEST:

  
Julie Johnson  
City Clerk



**PROPOSED  
CSAH 15  
DESIGNATION**

CITY OF GRANT  
CITY OF STILLWATER

TH 36 WB RAMP

60TH ST N

TH 36 WB RAMP



CITY OF GRANT  
CITY OF LAKE ELMO

CITY OF STILLWATER  
CITY OF LAKE ELMO



MN TH 36

CITY OF LAKE ELMO  
CITY OF STILLWATER

TH 36 EB RAMP

CITY OF LAKE ELMO  
CITY OF STILLWATER

LINDEN AVE N

MANNING AVE N