



# fresh

Your Weekly Source for City News and Information

## Public Meetings Next Week

- Planning Commission Monday, November 8 - Cancelled
- City Council Workshop Tuesday, November 9 - 6:30PM



[City Agendas and Minutes](#)

Visit our website



## Wednesday, November 3 City Council Meeting Summary

### At their regular meeting on Wednesday, November 3 the City Council:

- Approved the Crossroads East Final Plat and Final PUD Plan
- Ordered the Improvements and Preparation of Plans and Specifications for the 2022 Street Improvements
- Awarded Bids for the New City Center and Public Works Addition
- Approved Amendment #1 to Lea A Daly Contract for New City Center and Public Works Addition
- Authorized 2021A Bond I

### On the consent agenda the Council:

- Approved Payment of Disbursements
- Approved Prosecution Contract with Eckberg Lammers
- Accepted September 2021 Sheriff's Officer Report
- Approved 2022 Health Insurance
- Approved No Biking Signage for Multi Use Trails in Sunfish Lake Park
- Approved Recodification
- Approved Amendment to MNSPECT Contract for State Delegation
- Approved Step Increase for Fire Inspector

Meeting Materials Can Be Accessed Here

## Monday, November 8 Planning Commission Notice of Cancellation



*Our Mission is to Provide Quality Public  
Services in a Fiscally Responsible Manner  
While Preserving the City's Open Space  
Character*

### **NOTICE OF MEETING CANCELATION**

**City of Lake Elmo Planning Commission  
3800 Laverne Avenue North**

**Monday November 8, 2021**

**Meeting has been cancelled**

**Tuesday, November 9 City Council Workshop Agenda**



*Our Mission is to Provide Planned, Quality  
Public Services in a Fiscally Responsible  
Manner in Partnership with our  
Community*

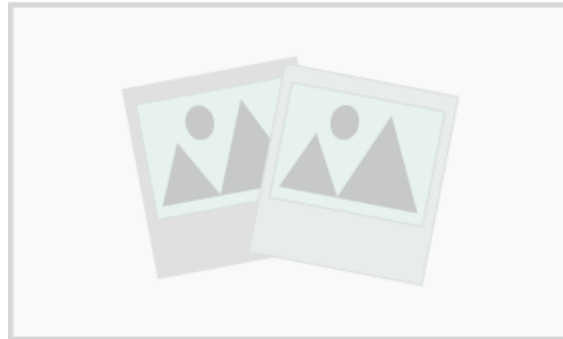
## **NOTICE OF MEETING**

**City Council Workshop  
3800 Laverne Avenue North  
November 9, 2021  
6:30 PM**

## **AGENDA**

- |   |                |
|---|----------------|
| <b>I. Call to Order</b>                                       | <b>6:30 PM</b> |
| <b>II. Planning/Building Dept Audit Results</b>               | <b>6:30 PM</b> |
| <b>III. Northern Portion of 180 Acres on Ideal Ave</b>        | <b>7:00 PM</b> |
| <b>IV. Sprinkler Code 1306</b>                                | <b>7:30 PM</b> |
| <b>V. Items for Future Work Session Agenda</b>                | <b>8:00 PM</b> |
| <b>A. Tax Increment Financing (TIF) Discussion (Jan/Feb?)</b> |                |
| <b>B. HOA Covenants Discussion</b>                            |                |
| <b>VI. Adjourn</b>  | <b>8:00 PM</b> |

[Visit our website](#)



## **Offer Your Input on Highway 36, Lake Elmo Avenue Improvements Starting November 9**

Washington County will host an open house to plan for future improvements to the Highway 36 and Lake Elmo Avenue intersection from 4-6PM on Tuesday, November 9 at River Valley Church located at 5900 Lake Elmo Ave N.



There will also be the opportunity to comment online from November 9 to 28.

## REMINDER: Winter Parking Ordinance In Effect

Winter parking ordinance prohibits parking on Lake Elmo Streets from Nov. 1 through March 31 between 2:00 AM and 7:00 AM.

Public Works can't clear the roadways with cars blocking their paths!



## REMINDER: Sunfish Lake Park Archery Hunt

Sunfish Lake Park will be closed for a deer harvest between 11/8-11/10. For more information, please check out the Washington County Website at <https://www.co.washington.mn.us/492/Parks>

## StarWatch event set for Nov. 6 at Lake Elmo Park Reserve

Make the stars your old friends during the great celestial show in the skies over Lake Elmo Park Reserve at a StarWatch event with Mike Lynch at 7 p.m. to 9 p.m. Saturday, Nov. 6. The event will take place at the swim pond.

Reservations are limited. Due to changes in the Parks' computer system, reservations must be made by calling 651-430-8370. The cost is \$5 per person.



## The City of Lake Elmo is Accepting Applications for the City Planner Position

[Visit our website for information and application materials.](#)

## **Planting for Clean Water: Wonderful Wetlands**

Tue., Nov. 9, 6-7:30pm, online  
(Register at [tinyurl.com/wetlands2021](https://tinyurl.com/wetlands2021))

Learn how to add beauty to your yard with native plants and landscaping features that will protect your wetland and provide habitat for birds and pollinators.

During our “Wonderful Wetlands” webinar, we will talk about what makes wetlands special, unique plants and animals that are found in wetlands, invasive species, and rules that affect what landowners can and can’t do with wetlands on their properties.





# Be SALT SMART!



## WATER SOFTENERS

**Water softeners account for up to 65% of the chloride that is discharged from municipal wastewater treatment plants statewide.**

Hard water is pervasive in our state; thus, water softeners are a common fixture in many Minnesota homes. Conventional water softeners treat hard water by exchanging the hard minerals with sodium and potassium ions. When the system is 'full,' it resets or regenerates by sending a pulse of salt water through the system. Municipal wastewater treatment plants do NOT treat for chloride, meaning that salty water is then discharged to our waterways.

### **How do I reduce my chloride footprint?**

**Do you need to soften your water?** If you live in a city, check to see whether your water utility softens the water before distribution. This eliminates or decreases the need for a water softener.

**Optimize your water softener settings:** If you have an older water softener, regeneration generally happens on a timer versus by water use – extending the timing between regeneration cycles will reduce the amount of wastewater produced.

**Replace your water softener:** Newer water softener models regenerate based on water use versus a timer, using less salt and water.

**Don't soften ALL your water:** Only soften the water from your hot water taps versus cold water drinking taps.

**Reduce your overall water use:** Cutting back lessens demand for softened water and conserves our water resources!

**Using more than 1  
40-lb bag of salt a  
month?**

Check with a water  
professional to  
optimize softener  
efficiency!

DO YOU HAVE A  
**LEAKY  
TOILET?**



**FIND OUT:**

1. Add a drop of food coloring to the tank.
2. Wait 10 minutes.
3. If you see the color in your toilet bowl, you have a leak!

**Water Conservation  
Rebate Program**

The City of Lake Elmo, in partnership with the Metropolitan Council, is offering a rebate program for purchases of eligible WaterSense toilets and Smart Irrigation Controllers. Qualifying purchases are eligible for up to a \$200 credit on your water bill.

[Program Details Available Here](#)





## **Lake Elmo Library: Upcoming Events**

### **Write-In for National Novel Writing Month**

November is National Novel Writing Month! During NaNoWriMo, participants are challenged to write 50,000 words of a novel in 30 days. Each Tuesday in November from 6-7:45 p.m., join other local writers at Lake Elmo Library to work on your novel-in-progress. We'll start each session with a little time for visiting, cheering each other on, or commiserating about writer's block as needed. Then you'll have focused writing time until we close. The library will also provide writing prompts for nights when you are really feeling stuck. All ages are welcome.

### **Family Storytime**

Fridays at 10:30 a.m. and 11:00 a.m.

Encourage early literacy skills while enjoying stories, songs, fingerplays and more at Lake Elmo Library! This is an in-person, indoor program for children of all ages and their caregivers. Please register online at [WashCoLib.org/events](http://WashCoLib.org/events). Each registration covers space for one family group of up to four people.

### **Lake Elmo Library**

Stop by Lake Elmo library to check out books, use a computer, reserve a meeting room, and participate in a variety of programs.

Library Hours:

Monday and Friday: 10 a.m.-4 p.m.

Tuesday, Wednesday, and Thursday: 12-8 p.m.

Saturday: 10 a.m.-2 p.m.

Sunday: Closed

Learn more about current library services at [WashCoLib.org/Covid19](http://WashCoLib.org/Covid19)





**Crisis Assistance Relief for Homeownership Program (CARH)**

Homeowners in Washington County who have experienced a reduction in income because of the COVID-19 pandemic may apply for a one-time grant of up to six months of delinquent eligible housing payments, provided by the federal CARES Act through an allocation of Community Development Block Grant (CDBG-CV) funding to

Washington County and the City of Woodbury.

For full eligibility criteria and to begin the application process, contact a CDA Homeownership Specialist at:

homeownership@washingtoncountycda.org or 651-202-2822

<https://washingtoncountycda.org/covid-19-assistance-for-homeowners/>

- Property must be located in Washington County and be the primary residence of household (homesteaded)
- Due to funding requirements, properties located in Marine on St. Croix and manufactured homes are not eligible for assistance
- Delinquency or financial hardship must be due to a documented COVID-19-related financial impact on the household
- Gross annual household income must be 80% AMI or below (see chart)
- Eligible housing payments include:
  - Home mortgage/loan
  - Homeowners' insurance
  - Homeowners' association dues

80% of Area Median Income (AMI)	
HH Size	Annual Max.
1	\$55,950
2	\$63,950
3	\$71,950
4	\$79,900
5	\$86,300
6	\$92,700
7	\$99,100
8	\$105,500



## Sally Manzara Interpretive Nature Center (SMINC)

### Free Family Nature Exploration Saturdays

10-11am



Most events are held outdoors, please dress appropriately for the weather.

The Sally Manzara Interpretive Nature Center is located in Sunfish Lake Park in Lake Elmo, MN

<https://sminc-lake-elmo.org/>

[www.facebook.com/sunfishlakepark](http://www.facebook.com/sunfishlakepark)



#### November 6 Honey Bees in Winter

Learn about the three types of honey bees, what honey bees do in the winter and visit the active apiary with beekeeper Paul Liedl.



#### November 13 Story Stroll Hike

Drop in for a self guided outdoor storybook stroll with the book Bear Snores On.



#### November 20 Winter Sleepers

Learn from local behavioral biologist Mary Frick about what changes animals must make in the fall. Discover some surprising facts about animals from frogs to bears and how they survive our cold winter months.



#### November 27 Turkeys

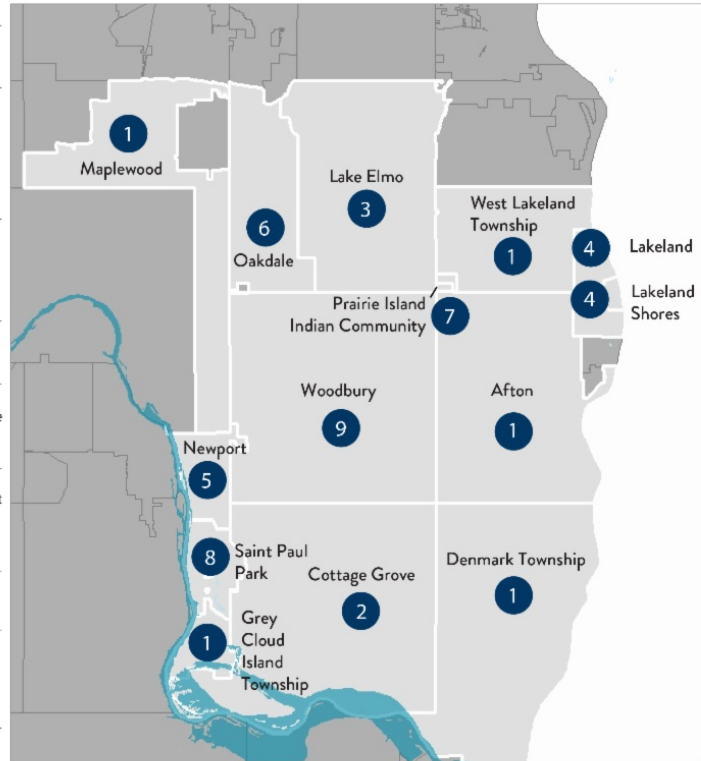
Go on a hike to search for and learn about turkeys in Sunfish Lake Park with expert Audubon Society birder Chase Davies. Bring your binoculars or check them out here.

## State announces comprehensive drinking water plan for 14 East Metro communities impacted by PFAS

## COMMUNITY PROJECTS

### PFAS Health Index at or above 0.5

- 1 **Maplewood, West Lakeland Township, Afton, Grey Cloud Island Township, Denmark Township**
  - Supply private wells with POETs if over threshold
- 2 **Cottage Grove**
  - Treat 8 of 12 existing public wells
  - Replace 2 existing public wells with 1 new public well that will receive treatment
  - Add 2 new water treatment plants
  - Connect 156 homes
  - Supply other private wells with POETs if over threshold
- 3 **Lake Elmo**
  - Supply drinking water from a combination of existing wells and new wells or an interconnect with Woodbury\*
  - Connect 97 homes
  - Supply other private wells with POETs if over threshold
- 4 **Lakeland, Lakeland Shores**
  - Connect 29 homes
  - Supply other private wells with POETs if over threshold
- 5 **Newport**
  - One interconnect with Woodbury and one with Cottage Grove
  - Connect 3 homes
  - Supply other private wells with POETs if over threshold
- 6 **Oakdale**
  - Treat 2 of 9 existing public wells and expand 1 treatment plant
  - Replace 3 existing public wells with 3 new public wells that will receive treatment
  - Supply other private wells with POETs if over threshold
- 7 **Prairie Island Indian Community**
  - Treat 1 existing public well
  - Add 1 new water treatment plant
- 8 **Saint Paul Park**
  - Treat 3 of 3 public wells
  - Add 1 new water treatment plant
  - Connect 6 homes
  - Supply other private wells with POETs if over threshold
- 9 **Woodbury**
  - Treat 15 of 19 existing wells
  - Replace 1 existing public well with 1 new public well
  - Add 1 new water treatment plant
  - Connect 5 homes
  - Supply other private wells with POETs if over threshold



\*The Co-Trustees set aside sufficient capital funding for either an autonomous option (two wells within Lake Elmo's borders that likely will need treatment) or an interconnect between Woodbury and Lake Elmo, due to some uncertainty regarding their future water source.

Read More Here



# Neighborhood Watch

*Making communities safer - One neighbor at a time*



### Neighborhood Watch works because it is designed to:

- Teach simple techniques to reduce the risk of being victimized at home or in public
- Train how to recognize and report suspicious activities
- Help neighborhoods to make their homes more secure
- Show people how to easily make records of their property so that it can be identified if lost or stolen
- Encourage neighbors to get to know each other so that any out of place activity can be recognized, reported, and investigated
- Develop a cohesive body of concerned citizens addressing issues involving the entire community
- Improve public safety by fostering cooperation between the Sheriff's Office and the residents of our communities

### What is required of members?

#### Sign Up

Sign up online at [www.nnw.org](http://www.nnw.org)  
 You will be asked for your name, postal address, phone number, and email addresses.  
 These items are not shared with the public and are used for official contact purposes only.

#### Participate

Members attend two meetings per year.

1. **Social Meeting:** Groups are highly encouraged to participate in Night to Unite for the social meeting requirement.
2. **Business meeting:** to discuss prevention tips, trends, and other concerns. Groups usually invite a Sheriff's Office representative to this meeting so that questions can be asked and answered.

Neighborhood Watch Block Captains are asked to maintain a current listing of their Neighborhood Watch members and share concerns of their neighborhood with the Sheriff's Office.

### How to start a Neighborhood Watch

1. **Talk to your neighbors.** See who in your neighborhood is interested in forming or participating in a Neighborhood Watch.
2. **Contact the Sheriff's Office** to schedule an informational meeting.
3. **Invite neighbors** and community members to attend the meeting.
4. **Elect a Block Captain.** This person is the contact person between your neighborhood and the Sheriff's Office.
5. **Ask your neighbors to sign up** for the neighborhood watch program.

**Stay active.**

**Talk with your neighbors.**

**Stay alert and report suspicious activity.**





## History

Neighborhood Watch was launched in 1972 by the National Sheriff's Association as a vehicle for citizens to organize themselves and work with law enforcement. The concept traces its roots back to the days of colonial settlements when night watchmen patrolled the streets.

The Washington County Sheriff's Office manages the Neighborhood Watch program for the cities and townships that are serviced by the Sheriff's Office for law enforcement services. These communities include:

Afton, Baytown Township, Birchwood, Dellwood, Denmark Township, Grant, Hugo, Lake Elmo, Lake St. Croix Beach, Lakeland, Lakeland Shores, Landfall, Mahtomedi, Marine on St. Croix, May Township, Newport, Pine Springs, Scandia, St. Mary's Point, Stillwater Township, West Lakeland Township, Willernie

## What it IS...

Neighborhood Watch is an association of neighbors who contribute to the safety and security of their neighborhood by working in partnership with the Washington County Sheriff's Office. Together, the Sheriff's Office and neighborhood volunteers work to implement the principles of crime deterrence and detection, while encouraging the active reporting of crimes and suspicious activity.

## What it is NOT...

Neighborhood Watch is not a vigilante force working outside the normal procedures of law enforcement. It is not designed for participants to take personal risks to prevent crime. Participation in the program is not a guarantee that crime will not occur in your neighborhood.

## Contact Information

Washington County Sheriff's Office  
Community Engagement Unit  
15015 62nd Street North  
Stillwater, Minnesota 55082

Emergency.....911

Non-Emergency Dispatch.....651-439-9381

Records/Reports.....651-430-7600

Tip-Line.....651-430-7850

[www.co.washington.mn.us](http://www.co.washington.mn.us)  
[www.facebook.com/WCSOMN](http://www.facebook.com/WCSOMN)

## Neighborhood Watch



Neighbors and Deputies  
working together  
for safer communities

## Neighborhood Watch

Neighbors and Deputies  
working together  
for safer communities



Washington County Sheriff's Office  
Sheriff Dan Starry



# Washington County Sheriff Department

If you are planning on being away from home or on vacation please follow some of the tips below to increase the safety and security of your property.

1. Lock all of the doors and windows.
2. Clear out the mailbox and notify the post office to hold your mail until you return. If you are having packages delivered be sure to use the package tracking options and arrange for the package to be picked up by a friend or family member.
3. Keep the yard and/or driveway maintained. Removal of snow from the driveway and walking paths is important.
4. Hide or secure your valuables from view of windows. Using safes is helpful in securing important items.
5. Don't broadcast your plans of being gone on social media. Only notify those who will be helping you in keeping an eye on your residence like a neighbor, family or friends.
6. Get your security system updated, tested and notified of your vacancy. Posting security signage in your yard on residence can help with deterrence of theft and burglary. Many door camera systems can be purchased at a reasonable price with instant notification of activity at your residence while you are away.
7. Adjust your heating settings especially as temperatures can drop significantly this time of year to avoid frozen water lines.
8. Security lighting and timers. The proper lighting on your residence can help to deter theft.
9. Request vacation checks through the Sheriff's Office while you are out of town.

These are just a few quick steps you can take to increase the security of your home while you are away. If you are interested in receiving information on vacation checks call our non-emergency number 651-439-9381



At the November 3 City Council Meeting the City Council awarded bids for the new City Center and Public Works Addition.

Regular updates and documents are available [here](#).



## CITY OF LAKE ELMO COMBINED CITY HALL & PUBLIC SAFETY FACILITY

The new Lake Elmo City Hall / Public Safety Facility combines City Hall staff and functions, the entire Fire Department, and a satellite office for the Washington County Sheriff's department. This co-location involves renovating and expanding the City-owned Brookfield Office building to concentrate civic resources into a single structure at the historic core of the city. In addition, the Public Works facility will also be expanded to accommodate City growth and expanded service needs.



**TOTAL ANTICIPATED PROJECT COST:** \$14,600,000  
**DESIGN COMPLETION:** Late summer 2021  
**CONSTRUCTION COMPLETION:** Fall of 2022





**MEETING THE DEMANDS OF AN EVOLVING FIRE SERVICE**

Lake Elmo currently has two fire stations, Fire Station #1 at 3510 Laverne Ave. N. and Fire Station #2 at 4259 Jamaica Ave. N. This project will consolidate these two stations into a single, state-of-the-art station that will meet the needs of our community and firefighters today and into the future. The building is designed to accommodate increasing call volumes, meet the demands for training and to support our evolving role as all hazard responders.

Due to the changing environment of fire department staffing needs and the impacts of that in relation to incident response times and budget responsibility, the fire department is consolidating to a single station which will allow the department the ability to transition to a staffing model that provides 24/7 coverage from the single station. This change requires the updated facilities like staff dorm rooms, day room and kitchen area, fitness room, staff workspaces and offices.

Educational materials provided by the City of Lake Elmo

For more information, visit our website: [www.lakeelmo.org](http://www.lakeelmo.org) or contact Kristina Handt, Administrator at [KHandt@lakeelmo.org](mailto:KHandt@lakeelmo.org)



The current fire stations are too small to accommodate modern apparatus and equipment and cannot provide adequate health protections for our firefighters.

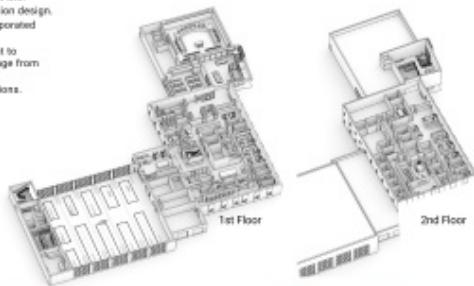
**A FUNCTIONAL FIRE STATION**

A new, single, state-of-the-art station will meet the needs of our community and firefighters today and into the future. Designed to accommodate our evolving role as all-hazard responders it will:

- Modernize our facilities following best practices in station design.
- Enhance firefighter training with training features incorporated into the building.
- The addition of living quarters will allow the department to transition to a staffing model that provides 24/7 coverage from the single station.
- Improve response times and overall department operations.

**DESIGNED FOR FIREFIGHTER HEALTH AND SAFETY**

- Distinct spaces to properly decontaminate gear and equipment. Focus to reduce staff exposure to firefighting carcinogens and other toxic materials.
- Properly ventilate the apparatus bay to reduce staff exposure to diesel exhaust and other harmful fumes.
- Space that supports the physical and mental health of staff.
- Clear separation between public and private spaces.



Lake Elmo City Hall, built in 1986, is a very small 2,806 SF. There are insufficient offices for all staff members and the restrooms are not accessible. The council chambers are small, do not provide sufficient space for department heads or members of the public, and lack modern technological updates. City staff have long outgrown this building and have since moved into the Brookfield Building located across the parking lot.

The Brookfield Building was purchased by the City in 2018 as a method of maintaining city functions next to the outgrown City Hall at a lower cost alternative to new construction. It was constructed in 1980 and will require a major overhaul to increase its useful life.

**AN EXPANDED AND IMPROVED CITY HALL**

- Improved service accessibility
- Community room available for public use
- New council chambers with updated technology
- Additional conference rooms
- Co-locate Washington County Sheriff staff
- Office space for growth of city staff
- Accessible restrooms.

