



# fresh

Your Weekly Source for City News and Information

## City Services have moved to the City Hall building at 3800 Laverne Avenue

### Public Meetings Next Week

- City Council Meeting Tuesday, October 19 7:00PM
- Parks Commission Meeting Monday, October 18 - Canceled



[City Agendas and Minutes](#)

Visit our website



Monday, October 18 Parks Commission Meeting Notice of Cancellation



*Our Mission is to Provide Quality Public  
Services in a Fiscally Responsible Manner  
While Preserving the City's Open Space  
Character*

**NOTICE OF MEETING CANCELATION**

**City of Lake Elmo Parks Commission  
3800 Laverne Avenue North**

**Monday, October 18th, 2021  
Meeting has been cancelled**

**Tuesday, October 19 City Council Meeting Agenda**



## NOTICE OF MEETING

### City Council Meeting

Tuesday, October 19, 2021 7:00 P.M.

City of Lake Elmo | 3800 Laverne Avenue North

## Agenda

### A. Call to Order/Pledge of Allegiance

### B. Approval of Agenda

### C. Approval of Minutes

1. October 5, 2021 & October 12, 2021

### D. Public Comments/Inquiries

### E. Presentations

### F. Consent Agenda

2. Approve Payment of Disbursements
3. Accept September 2021 Building Department Report
4. Accept September 2021 Public Works Report
5. Accept September 2021 Fire Department Report
6. Accept 3<sup>rd</sup> Quarter Financial Report
7. Approve Purchase of PID 13.029.21.32.0007 - *Resolution 2021-109*
8. Approve Fall 2021 Source Newsletter
9. Approve Amendment #1 to Royal Golf 3<sup>rd</sup> Addition Development Agreement – *Resolution 2021-110*
10. Approve Pay Request No. 3 for Tamarack Farm Estates Street Improvements
11. Approve Pay Request No. 3 for the 38th-39th Street Neighborhood Street and Utility Improvements
12. Approve Pay Request No. 4 for Old Village Phase 5 and 6 Street and Utility Improvements
13. Approve Pay Request No. 6 for Hamlet on Sunfish Lake Street and Utility Improvements
14. Approve Pay Request No. 6 for Heritage Farms Street and Utility Improvements
15. Accept Improvements and Approve Security Reduction for Inwood 4th Addition
16. Accept Donation to the Fire Department from Arbor Glen Senior Living – *Resolution 2021-111*

### G. Regular Agenda

17. Final Assessment Hearing for Old Village Phase 5 and 6 Street and Utility Improvements – *Resolution 2021-112, 2021-113*
18. Final Assessment Hearing for Stonegate Addition Street and Utility Improvements – *Resolution 2021-114*
19. Crossroads East Final Plat and Final PUD Plan – *Resolution 2021-115*
20. Presentation of Feasibility Report for the Torre Pines Street and Utility Improvements. Council Accepts Report and Calls for Improvement Hearing. Council Approves Plans and Specifications and Orders Advertisement for Bids – *Resolution 2021-116*
21. Presentation of Feasibility Report for the Whistling Valley Street and Utility Improvements. Council Accepts Report and Calls for Improvement Hearing. Council Approves Plans and Specifications and Orders Advertisement for Bids – *Resolution 2021-117*
22. Presentation of Feasibility Report for the Tapestry Sanitary Sewer Extension. Council Accepts Report and Calls for Improvement Hearing – *Resolution 2021-118*
23. Lake Elmo Economic Development Authority 2021-2023 Work Plan

### H. Council Reports

### I. Staff Reports and Announcements

### J. Adjourn

Meeting Materials Can Be Accessed Here

# Buckthorn Removal Festival on Oct 23, 2021



At 9:30 a.m.: **Help remove Buckthorn - Team Competition**  
If interested in leading a team or joining as an individual, contact George at 651-757-5610

At 10:00 a.m.: **Learn about Buckthorn**  
Presentation by Ecologist Larissa Mottl

At 11:00 a.m.: **Craft or Croquet** with Buckthorn  
Whittle a buckthorn walking stick, decorate a buckthorn cookie or play buckthorn croquet

At 12:00: **Enjoy lunch:** Buckthorn-roasted hot dogs, chips, chili and cookies



## Neighborhood Watch

*Making communities safer - One neighbor at a time*



### Neighborhood Watch works because it is designed to:

- Teach simple techniques to reduce the risk of being victimized at home or in public
- Train how to recognize and report suspicious activities
- Help neighborhoods to make their homes more secure
- Show people how to easily make records of their property so that it can be identified if lost or stolen
- Encourage neighbors to get to know each other so that any out of place activity can be recognized, reported, and investigated
- Develop a cohesive body of concerned citizens addressing issues involving the entire community
- Improve public safety by fostering cooperation between the Sheriff's Office and the residents of our communities

### What is required of members?

#### Sign Up

Sign up online at [www.nnw.org](http://www.nnw.org)

You will be asked for your name, postal address, phone number, and email addresses.

These items are not shared with the public and are used for official contact purposes only.

#### Participate

Members attend two meetings per year.

1. **Social Meeting:** Groups are highly encouraged to participate in Night to Unite for the social meeting requirement.
2. **Business meeting** to discuss prevention tips, trends, and other concerns. Groups usually invite a Sheriff's Office representative to this meeting so that questions can be asked and answered.

Neighborhood Watch Block Captains are asked to maintain a current listing of their Neighborhood Watch members and share concerns of their neighborhood with the Sheriff's Office.

### How to start a Neighborhood Watch

1. **Talk to your neighbors.** See who in your neighborhood is interested in forming or participating in a Neighborhood Watch.
2. **Contact the Sheriff's Office** to schedule an informational meeting.
3. **Invite neighbors** and community members to attend the meeting.
4. **Elect a Block Captain.** This person is the contact person between your neighborhood and the Sheriff's Office.
5. **Ask your neighbors to sign up** for the neighborhood watch program.

**Stay active.**

**Talk with your neighbors.**

**Stay alert and report suspicious activity.**





## History

Neighborhood Watch was launched in 1972 by the National Sheriff's Association as a vehicle for citizens to organize themselves and work with law enforcement. The concept traces its roots back to the days of colonial settlements when night watchmen patrolled the streets.

The Washington County Sheriff's Office manages the Neighborhood Watch program for the cities and townships that are serviced by the Sheriff's Office for law enforcement services. These communities include:

Afton, Baytown Township, Birchwood, Dellwood, Denmark Township, Grant, Hugo, Lake Elmo, Lake St. Croix Beach, Lakeland, Lakeland Shores, Landfall, Mahtomedi, Marine on St. Croix, May Township, Newport, Pine Springs, Scandia, St. Mary's Point, Stillwater Township, West Lakeland Township, Willernie

## What it IS...

Neighborhood Watch is an association of neighbors who contribute to the safety and security of their neighborhood by working in partnership with the Washington County Sheriff's Office. Together, the Sheriff's Office and neighborhood volunteers work to implement the principles of crime deterrence and detection, while encouraging the active reporting of crimes and suspicious activity.

## What it is NOT...

Neighborhood Watch is not a vigilante force working outside the normal procedures of law enforcement. It is not designed for participants to take personal risks to prevent crime. Participation in the program is not a guarantee that crime will not occur in your neighborhood.

## Contact Information

Washington County Sheriff's Office  
Community Engagement Unit  
15015 62nd Street North  
Stillwater, Minnesota 55082

Emergency.....911

Non-Emergency Dispatch.....651-439-9381

Records/Reports.....651-430-7600

Tip-Line.....651-430-7850

[www.co.washington.mn.us](http://www.co.washington.mn.us)  
[www.facebook.com/WCSOMN](http://www.facebook.com/WCSOMN)

## Neighborhood Watch



Neighbors and Deputies  
working together  
for safer communities

## Neighborhood Watch

Neighbors and Deputies  
working together  
for safer communities



Washington County Sheriff's Office  
Sheriff Dan Starry



# Washington County Sheriff Department

If you are planning on being away from home or on vacation please follow some of the tips below to increase the safety and security of your property.

1. Lock all of the doors and windows.
2. Clear out the mailbox and notify the post office to hold your mail until you return. If you are having packages delivered be sure to use the package tracking options and arrange for the package to be picked up by a friend of family member.
3. Keep the yard and/or driveway maintained. Removal of snow from the driveway and walking paths is important.
4. Hide or secure your valuables from view of windows. Using safes is helpful in securing important items.
5. Don't broadcast your plans of being gone on social media. Only notify those who will be helping you in keeping an eye on your residence like a neighbor, family or friends.
6. Get your security system updated, tested and notified of your vacancy. Posting security signage in your yard on residence can help with deterrence of theft and burglary. Many door camera systems can be purchased at a reasonable price with instant notification of activity at your residence while you are away.
7. Adjust your heating settings especially as temperatures can drop significantly this time of year to avoid frozen water lines.
8. Security lighting and timers. The proper lighting on your residence can help to deter theft.
9. Request vacation checks through the Sheriff's Office while you are out of town.

These are just a few quick steps you can take to increase the security of your home while you are away. If you are interested in receiving information on vacation checks call our non-emergency number 651-439-9381



Community Thread's Rake a Difference Day is a family-friendly volunteer activity that takes place in October to provide raking services for older adults and adults with disabilities throughout Washington County. This year, Rake a Difference Day will be held on **Saturday, October 23, 2021**.

[Volunteer here](#)

"We always **love** finding a way to serve in our community. We raked the home of a sweet elderly woman who has lived in her home for many years and are so happy to have assisted her. **It was a very rewarding experience.**"

*- Rake a Difference Volunteer*

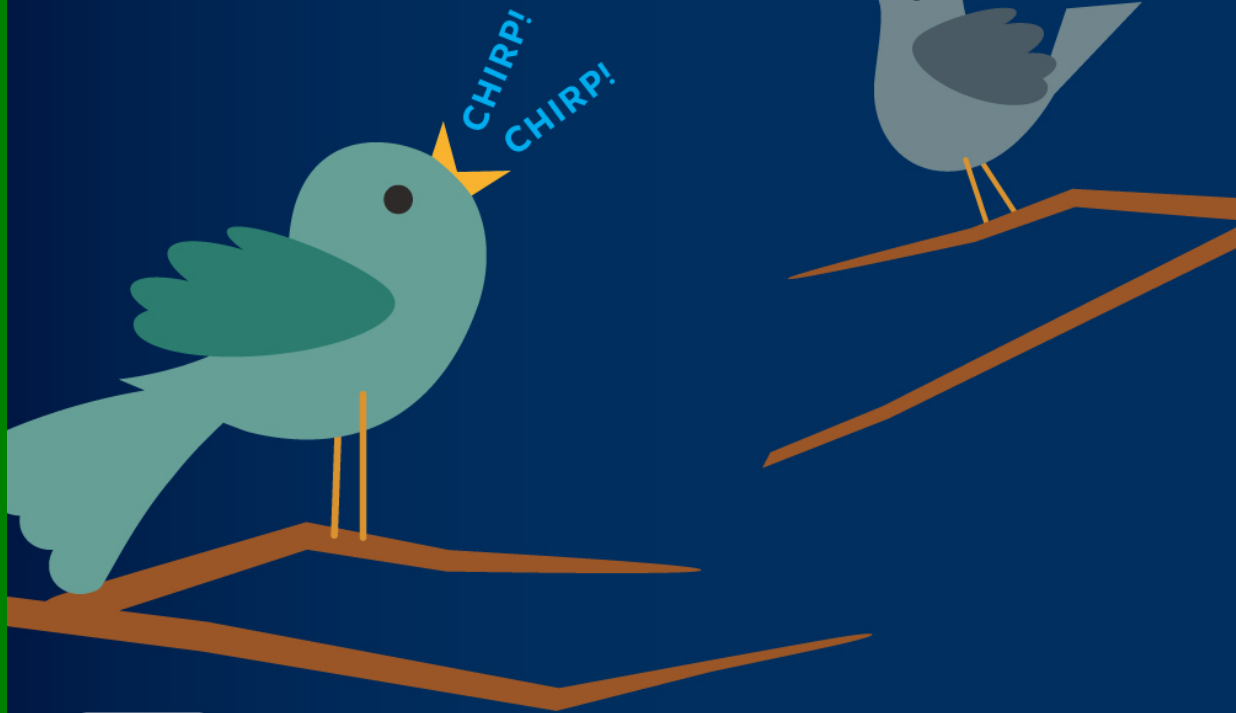


### **StarWatch event set for Nov. 6 at Lake Elmo Park Reserve**

Make the stars your old friends during the great celestial show in the skies over Lake Elmo Park Reserve at a StarWatch event with Mike Lynch at 7 p.m. to 9 p.m. Saturday, Nov. 6. The event will take place at the swim pond.

Reservations are limited. Due to changes in the Parks' computer system, reservations must be made by calling 651-430-8370. The cost is \$5 per person.

Hear a chirp, make a change!  
A CHIRPING ALARM means the  
battery, or the entire alarm,  
must be replaced.



Learn the sounds of fire safety at [fpw.org](http://fpw.org).



**\$ BIZRECYCLING®**

**Waste Reduction  
+ Innovation Grant**

Get up to **\$50k** in  
grant dollars for  
**your business.**

Learn more and apply at  
**[BizRecycling.com/Innovation](https://www.bizrecycling.com/Innovation)**



### **Sunfish Lake Park Archery Hunt**

Sunfish Lake Park will be closed for a deer harvest between 10/25-10/27 and 11/8-11/10. For more information, please check out the Washington County Website at <https://www.co.washington.mn.us/492/Parks>



# Notice – Upcoming Archery Deer Harvest

A special permitted archery deer harvest will be conducted at Lake Elmo Park Reserve and Sunfish Lake Park on:

**10/25 – 10/27  
&  
11/8 – 11/10**

## **Lake Elmo Park Reserve**

Most trails and natural areas are closed to the public. See park website for trails that will remain open (paved trail and a few trails on west side of park).

## **Sunfish Lake Park**

The entire park will be closed to the public.

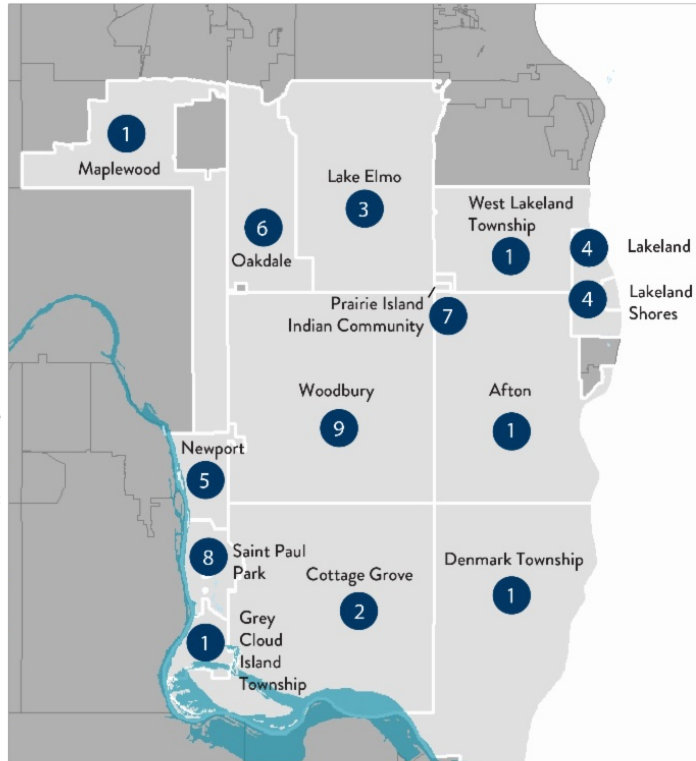


For more information contact: 651-430-8370

**State announces comprehensive drinking water  
plan for 14 East Metro communities impacted by  
PFAS**

**COMMUNITY PROJECTS**  
PFAS Health Index at or above 0.5

- 1 **Maplewood, West Lakeland Township, Afton, Grey Cloud Island Township, Denmark Township**
  - Supply private wells with POETSS if over threshold
- 2 **Cottage Grove**
  - Treat 8 of 12 existing public wells
  - Replace 2 existing public wells with 1 new public well that will receive treatment
  - Add 2 new water treatment plants
  - Connect 156 homes
  - Supply other private wells with POETSS if over threshold
- 3 **Lake Elmo**
  - Supply drinking water from a combination of existing wells and new wells or an interconnect with Woodbury\*
  - Connect 97 homes
  - Supply other private wells with POETSS if over threshold
- 4 **Lakeland, Lakeland Shores**
  - Connect 29 homes
  - Supply other private wells with POETSS if over threshold
- 5 **Newport**
  - One interconnect with Woodbury and one with Cottage Grove
  - Connect 3 homes
  - Supply other private wells with POETSS if over threshold
- 6 **Oakdale**
  - Treat 2 of 9 existing public wells and expand 1 treatment plant
  - Replace 3 existing public wells with 3 new public wells that will receive treatment
  - Supply other private wells with POETSS if over threshold
- 7 **Prairie Island Indian Community**
  - Treat 1 existing public well
  - Add 1 new water treatment plant
- 8 **Saint Paul Park**
  - Treat 3 of 3 public wells
  - Add 1 new water treatment plant
  - Connect 6 homes
  - Supply other private wells with POETSS if over threshold
- 9 **Woodbury**
  - Treat 15 of 19 existing wells
  - Replace 1 existing public well with 1 new public well
  - Add 1 new water treatment plant
  - Connect 5 homes
  - Supply other private wells with POETSS if over threshold



\*The Co-Trustees set aside sufficient capital funding for either an autonomous option (two wells within Lake Elmo's borders that likely will need treatment) or an interconnect between Woodbury and Lake Elmo, due to some uncertainty regarding their future water source.

[Read More Here](#)

# Drive Safe. Work Safe. Save Lives.

For the protection of all workers in public right of way, we hope you will help us to get the word out about following work zone rules. The following points from the American Traffic Safety Services Association were shared for work zone awareness week, but are just as important now:

- **Slow down as you approach the work zone.**
- **When possible, safely move over to provide workers with a clear buffer lane from traffic.**
- **If you can't move over safely, reduce your speed to 20 mph below the posted speed limit as you pass the work zone.**
- **Never use your mobile device while operating a vehicle.**

## New Interactive Parks and Trails Map

In 2021 the City introduced a new Interactive Parks and Trails Map showcasing City Parks, Trailheads, and Trail maps. Check it out [here!](#)



The City, through Living Healthy and Washington County, received grant funding to install bike repair stations in Sunfish lake Park and Ivywood Park. Both repair stations have tools, an air pump and a bike rack.



## Bicycle Repair Station Station de réparation de vélos



Living**Healthy**

Washington  
County



**ADOPT  
A STORM  
DRAIN**



Storm drains in our city help to protect neighborhoods from flooding, but they also carry litter and polluted runoff from streets and parking lots into nearby lakes and streams.

You can make a difference by volunteering just 15-minutes, twice a month, to keep their nearest storm drain clear of litter, leaves, grass clippings and dirt. To sign up: go to [www.Adopt-a-Drain.org](http://www.Adopt-a-Drain.org) and use the map to find your neighborhood storm drains – then click and sign-up to adopt.

### **Xcel Energy Consumer Update**

Xcel Energy residential electric customers who have between \$1,000 to \$4,000 in past due charges are eligible for the Payment Plan Credit Program, which could forgive up to 75% of their past-due balance if they enroll and stay current in a payment plan. Customers can enroll in other payment plans we offer through the My Account feature at [www.XcelEnergy.com](http://www.XcelEnergy.com), or contact customer care at 1-800-895-4999



### **Sally Manzara Interpretive Nature Center Update**

The Sally Manzara Interpretive Nature Center in Sunfish Lake Park now has a Saturday morning series of Family Nature Exploration programs. This Saturday Oct. 16th at 10 AM we focus on the trees, why the leaves change color, and provide an opportunity to make your own window decoration from the beautiful leaves.



**October 16**

**Tree ID**

Learn about what trees are in Sunfish Lake Park and why leaves change colors while collecting some for a leaf window craft.





Saturday October 23rd is the Annual Sunfish Lake Park Buckthorn Removal Festival. Teams will remove buckthorn or plant native seeds from 9:30 to Noon, and then enjoy a lunch of buckthorn-roasted hot dogs and all the fixings. Buckthorn crafts will be offered at 10 AM for the younger visitors. Please contact George to register your team, or for more information. 651-757-5610.



3M East Metro Settlement Updates

**m** MINNESOTA

### Well sampling in the east metro area

If you live in the area that is a priority for testing, you can request that your private well water be tested.

- To see if you live in the priority sampling area, use the [interactive map](#).

- If you live in the priority sampling area, you can request to have your well tested by filling out and [submitting this online form](#).

More information about the priority testing area is available on theWell sampling in the [East Metro Area webpage](#).

## Water Conservation Rebate Program

The City of Lake Elmo, in partnership with the Metropolitan Council, is offering a rebate program for purchases of eligible WaterSense toilets and Smart Irrigation Controllers. Qualifying purchases are eligible for up to a \$200 credit on your water bill.

[Program Details Available Here](#)



## Water Wisely: Start in your own backyard

Water is a precious resource needed by all living things. If you care for a yard or garden, you can help protect water resources by being wise about watering practices, starting in your own backyard.

Much of our treated drinking water is also used for landscape irrigation, so it pays to reduce water use and protect our supply by being wise about landscape watering practices at home.

Although all plants need water to be healthy and grow, some—like lawns—actually need less water than we think. While others—like trees—need more. Knowing the what, when, where and how of watering in your garden or landscape is key to growing healthy plants and conserving our precious water supply.

See the University of Minnesota's "Watering Wisely" tips [here](#).

### Lake Elmo Library

Stop by Lake Elmo library to check out books, use a computer, reserve a meeting room, and participate in a variety of programs.

Library Hours:

Monday and Friday: 10 a.m.-4 p.m.

Tuesday, Wednesday, and Thursday: 12-8 p.m.

Saturday: 10 a.m.-2 p.m.



Sunday: Closed

Learn more about current library services at [WashCoLib.org/Covid19](https://WashCoLib.org/Covid19)

## Washington County Library Events

### Public Facilities Project Update

Regular updates and documents are available [here](#).



## CITY OF LAKE ELMO COMBINED CITY HALL & PUBLIC SAFETY FACILITY

The new Lake Elmo City Hall / Public Safety Facility combines City Hall staff and functions, the entire Fire Department, and a satellite office for the Washington County Sheriff's department. This co-location involves renovating and expanding the City-owned Brookfield Office building to concentrate civic resources into a single structure at the historic core of the city. In addition, the Public Works facility will also be expanded to accommodate City growth and expanded service needs.



**TOTAL ANTICIPATED PROJECT COST:** \$14,600,000  
**DESIGN COMPLETION:** Late summer 2021  
**CONSTRUCTION COMPLETION:** Fall of 2022





**MEETING THE DEMANDS OF AN EVOLVING FIRE SERVICE**

Lake Elmo currently has two fire stations, Fire Station #1 at 3510 Laverne Ave. N. and Fire Station #2 at 4259 Jamaica Ave. N. This project will consolidate these two stations into a single, state-of-the-art station that will meet the needs of our community and firefighters today and into the future. The building is designed to accommodate increasing call volumes, meet the demands for training and to support our evolving role as all hazard responders.

Due to the changing environment of fire department staffing needs and the impacts of that in relation to incident response times and budget responsibility, the fire department is consolidating to a single station which will allow the department the ability to transition to a staffing model that provides 24/7 coverage from the single station. This change requires the updated facilities like staff dorm rooms, day room and kitchen area, fitness room, staff workspaces and offices.

Educational materials provided by the City of Lake Elmo  
 For more information, visit our website: [www.lakeelmo.org](http://www.lakeelmo.org) or contact Kristina Handt, Administrator at [KHandt@lakeelmo.org](mailto:KHandt@lakeelmo.org)



The current fire stations are too small to accommodate modern apparatus and equipment and cannot provide adequate health protections for our firefighters.

**A FUNCTIONAL FIRE STATION**

A new, single, state-of-the-art station will meet the needs of our community and firefighters today and into the future. Designed to accommodate our evolving role as all-hazard responders it will:

- Modernize our facilities following best practices in station design.
- Enhance firefighter training with training features incorporated into the building.
- The addition of living quarters will allow the department to transition to a staffing model that provides 24/7 coverage from the single station.
- Improve response times and overall department operations.

**DESIGNED FOR FIREFIGHTER HEALTH AND SAFETY**

- Distinct spaces to properly decontaminate gear and equipment. Focus to reduce staff exposure to firefighting carcinogens and other toxic materials.
- Properly ventilate the apparatus bay to reduce staff exposure to diesel exhaust and other harmful fumes.
- Space that supports the physical and mental health of staff.
- Clear separation between public and private spaces.



Lake Elmo City Hall, built in 1986, is a very small 2,806 SF. There are insufficient offices for all staff members and the restrooms are not accessible. The council chambers are small, do not provide sufficient space for department heads or members of the public, and lack modern technological updates. City staff have long outgrown this building and have since moved into the Brookfield Building located across the parking lot.

The Brookfield Building was purchased by the City in 2018 as a method of maintaining city functions next to the outgrown City Hall at a lower cost alternative to new construction. It was constructed in 1980 and will require a major overhaul to increase its useful life.

**AN EXPANDED AND IMPROVED CITY HALL**

- Improved service accessibility
- Community room available for public use
- New council chambers with updated technology
- Additional conference rooms
- Co-locate Washington County Sheriff staff
- Office space for growth of city staff
- Accessible restrooms.

