



fresh

Your Weekly Source for City News and Information

City Services have moved to the City Hall building at 3800 Laverne Avenue

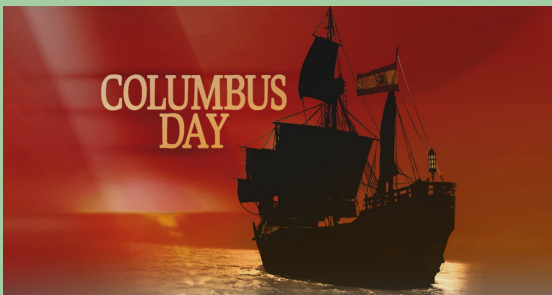
Public Meetings Next Week

- City Council Workshop Tuesday, October 12 6:30PM
- Planning Commission Meeting Monday, October 11 - Cancelled



[City Agendas and Minutes](#)

Visit our website



City Offices Closed For Columbus Day

City Offices and Facilities will be closed Monday, October 11th in observance of Columbus Day.

Tuesday, October 5 City Council Meeting Summary

At their regular meeting on Tuesday, October 5th, 2021 The City Council:

- Approved the Vacation of Drainage and Utility Easements on Outlots G, H and I in Wildflower at Lake Elmo, with Conditions
- Authorized Issuance and Sale of General Obligation Bonds and Approved a Municipal Services Agreement with Northland Securities, Inc.
- Received the Feasibility Report and Called for a Public Hearing for the 2022 Street and Utility Improvements to be held November 3 at 7:00PM
- Approved the Purchase of Fire Engine 1 from Rosenbauer Minnesota, LLC
- Approved the Purchase of Fire Department Brush Truck 1
- Appointed Thomas Rehkamp to the Planning Commission
- Called for a Special Meeting to be held October 19 to Evaluate the City Administrator

On the consent agenda the Council:

- Approved Payment of Disbursements
- Approved Cooperative Agreement Payment No. 4 (FINAL) for the Inwood Avenue (CSAH 13) & 5th Street Traffic Signal Improvements
- Approved Release of Warranty Security for Inwood 3rd Addition
- Accepted Improvements and Approved Security Reduction for Boulder Ponds Senior Living Center
- Accepted Improvements and Approved Security Reduction for ISD #834 (Stillwater) Bus Facility
- Approved Security Reduction for Boulder Ponds 1st Addition
- Approved Security Reduction for Growing Explorers
- Approved Security Reduction for Village Preserve 1st Addition
- Approved Security Reduction for Village Preserve 2nd Addition
- Approved Lake Olson and Demontreville Grant Request
- Approved Amendment #1 to Real Estate Contract with Northpoint Development
- Approved Service Contract with Youth Service Bureau

Monday, October 11 Planning Commission Meeting Notice of Cancellation



Our Mission is to Provide Quality Public Services in a Fiscally Responsible Manner While Preserving the City's Open Space Character

NOTICE OF MEETING CANCELLATION

City of Lake Elmo Planning Commission

3800 Laverne Avenue North

Monday October 11, 2021

Meeting has been cancelled



*Our Mission is to Provide Planned, Quality
Public Services in a Fiscally Responsible
Manner in Partnership with our
Community*

NOTICE OF MEETING

**City Council Workshop
3800 Laverne Avenue North
October 12, 2021
6:30 PM**

AGENDA

- | | |
|---|----------------|
| I. Call to Order | 6:30 PM |
| II. Conceptual Drinking Water Supply Plan-MPCA/DNR | 6:30 PM |
| III. Sunfish Lake Park User Group Requests | 7:00 PM |
| IV. Prosecution Interviews | |
| A. Eckberg Lammers | 7:30 PM |
| B. Kelly and Lemmons | 7:45 PM |
| V. ARPA Request | 8:00 PM |
| VI. Items for Future Work Session Agenda | 8:15 PM |
| A. Planning/Building Dept Audit Results | |
| VII. Adjourn | 8:30 PM |

[Meeting Materials Can Be Accessed Here](#)

Minnesota Main Street COVID Relief Grants

The Minnesota Department of Employment and Economic Development started taking applications for COVID Relief Grants on **September 20th, 2021**. The program will make available grants to Minnesotan owned and operated businesses effected by COVID-19 ranging from \$10,000-

\$25,000.

[Apply Here](#)



Neighborhood Watch

Making communities safer - One neighbor at a time



Neighborhood Watch works because it is designed to:

- Teach simple techniques to reduce the risk of being victimized at home or in public
- Train how to recognize and report suspicious activities
- Help neighborhoods to make their homes more secure
- Show people how to easily make records of their property so that it can be identified if lost or stolen
- Encourage neighbors to get to know each other so that any out of place activity can be recognized, reported, and investigated
- Develop a cohesive body of concerned citizens addressing issues involving the entire community
- Improve public safety by fostering cooperation between the Sheriff's Office and the residents of our communities

What is required of members?

Sign Up

Sign up online at www.nnw.org

You will be asked for your name, postal address, phone number, and email addresses.

These items are not shared with the public and are used for official contact purposes only.

Participate

Members attend two meetings per year.

1. **Social Meeting:** Groups are highly encouraged to participate in Night to Unite for the social meeting requirement.
2. **Business meeting** to discuss prevention tips, trends, and other concerns. Groups usually invite a Sheriff's Office representative to this meeting so that questions can be asked and answered.

Neighborhood Watch Block Captains are asked to maintain a current listing of their Neighborhood Watch members and share concerns of their neighborhood with the Sheriff's Office.

How to start a Neighborhood Watch

1. **Talk to your neighbors.** See who in your neighborhood is interested in forming or participating in a Neighborhood Watch.
2. **Contact the Sheriff's Office** to schedule an informational meeting.
3. **Invite neighbors** and community members to attend the meeting.
4. **Elect a Block Captain.** This person is the contact person between your neighborhood and the Sheriff's Office.
5. **Ask your neighbors to sign up** for the neighborhood watch program.

Stay active.

Talk with your neighbors.

Stay alert and report suspicious activity.



History

Neighborhood Watch was launched in 1972 by the National Sheriff's Association as a vehicle for citizens to organize themselves and work with law enforcement. The concept traces its roots back to the days of colonial settlements when night watchmen patrolled the streets.

The Washington County Sheriff's Office manages the Neighborhood Watch program for the cities and townships that are serviced by the Sheriff's Office for law enforcement services. These communities include:

Afton, Baytown Township, Birchwood, Dellwood, Denmark Township, Grant, Hugo, Lake Elmo, Lake St. Croix Beach, Lakeland, Lakeland Shores, Landfall, Mahtomedi, Marine on St. Croix, May Township, Newport, Pine Springs, Scandia, St. Mary's Point, Stillwater Township, West Lakeland Township, Willernie

What it IS...

Neighborhood Watch is an association of neighbors who contribute to the safety and security of their neighborhood by working in partnership with the Washington County Sheriff's Office. Together, the Sheriff's Office and neighborhood volunteers work to implement the principles of crime deterrence and detection, while encouraging the active reporting of crimes and suspicious activity.

What it is NOT...

Neighborhood Watch is not a vigilante force working outside the normal procedures of law enforcement. It is not designed for participants to take personal risks to prevent crime. Participation in the program is not a guarantee that crime will not occur in your neighborhood.

Contact Information

Washington County Sheriff's Office
Community Engagement Unit
15015 62nd Street North
Stillwater, Minnesota 55082

Emergency.....911

Non-Emergency Dispatch.....651-439-9381

Records/Reports.....651-430-7600

Tip-Line.....651-430-7850

www.co.washington.mn.us
www.facebook.com/WCSOMN

Neighborhood Watch



Neighbors and Deputies
working together
for safer communities

Neighborhood Watch

Neighbors and Deputies
working together
for safer communities



Washington County Sheriff's Office
Sheriff Dan Starry



Washington County Sheriff Department

If you are planning on being away from home or on vacation please follow some of the tips below to increase the safety and security of your property.

1. Lock all of the doors and windows.
2. Clear out the mailbox and notify the post office to hold your mail until you return. If you are having packages delivered be sure to use the package tracking options and arrange for the package to be picked up by a friend of family member.
3. Keep the yard and/or driveway maintained. Removal of snow from the driveway and walking paths is important.
4. Hide or secure your valuables from view of windows. Using safes is helpful in securing important items.
5. Don't broadcast your plans of being gone on social media. Only notify those who will be helping you in keeping an eye on your residence like a neighbor, family or friends.
6. Get your security system updated, tested and notified of your vacancy. Posting security signage in your yard on residence can help with deterrence of theft and burglary. Many door camera systems can be purchased at a reasonable price with instant notification of activity at your residence while you are away.
7. Adjust your heating settings especially as temperatures can drop significantly this time of year to avoid frozen water lines.
8. Security lighting and timers. The proper lighting on your residence can help to deter theft.
9. Request vacation checks through the Sheriff's Office while you are out of town.

These are just a few quick steps you can take to increase the security of your home while you are away. If you are interested in receiving information on vacation checks call our non-emergency number 651-439-9381



Community Thread's Rake a Difference Day is a family-friendly volunteer activity that takes place in October to provide raking services for older adults and adults with disabilities throughout Washington County. This year, Rake a Difference Day will be held on **Saturday, October 23, 2021**.

[Volunteer here](#)

"We always **love** finding a way to serve in our community. We raked the home of a sweet elderly woman who has lived in her home for many years and are so happy to have assisted her. **It was a very rewarding experience.**"

- Rake a Difference Volunteer



Learn the
Sounds
of **Fire Safety**™

firepreventionweek.org

©2021 NFPA®. Sparky® is a trademark of NFPA®.



It's Fire Prevention Week! This year's theme is "Learn the Sounds of Fire Safety." When an alarm makes noises – a beeping sound or a chirping sound – make sure you know what to do!

Hear a Beep, Get On Your Feet!
Get out and stay out! Call 9-1-1 from the outside.

Hear a Chirp, Make a Change!
A chirping alarm needs attention. Replace the batteries or the entire unit if it over 10 years old. If you don't remember how old the unit is, replace it!

Learn the different sounds smoke and carbon monoxide alarms make. Knowing what to do when an alarm sounds will keep you and your family safe. When an alarm makes noises – a beeping sound or a chirping sound – you must take action.

What is your alarm telling you?

SMOKE ALARMS

- A continued set of three loud beeps—beep, beep, beep—means smoke or fire. Get out, call 9-1-1, and stay out.
- A single “chirp” every 30 or 60 seconds means the battery is low and must be changed.
- All smoke alarms must be replaced after 10 years.
- Chirping that continues after the battery has been replaced means the alarm is at the end of its life and the unit must be replaced.

CARBON MONOXIDE (CO) ALARMS

- A continuous set of four loud beeps—beep, beep, beep, beep—means carbon monoxide is present in your home. Go outside, call 9-1-1 and stay out.
- A single chirp every 30 or 60 seconds means the battery is low and must be replaced.
- CO alarms also have “end of life” sounds that vary by manufacturer. This means it’s time to get a new CO alarm.
- Chirping that continues after the battery has been replaced means the alarm is at the end of its life and the unit must be replaced.

If you have any questions about the alarms in your home, please call the fire department at 651-770-5006. If it's an emergency, always call 911!

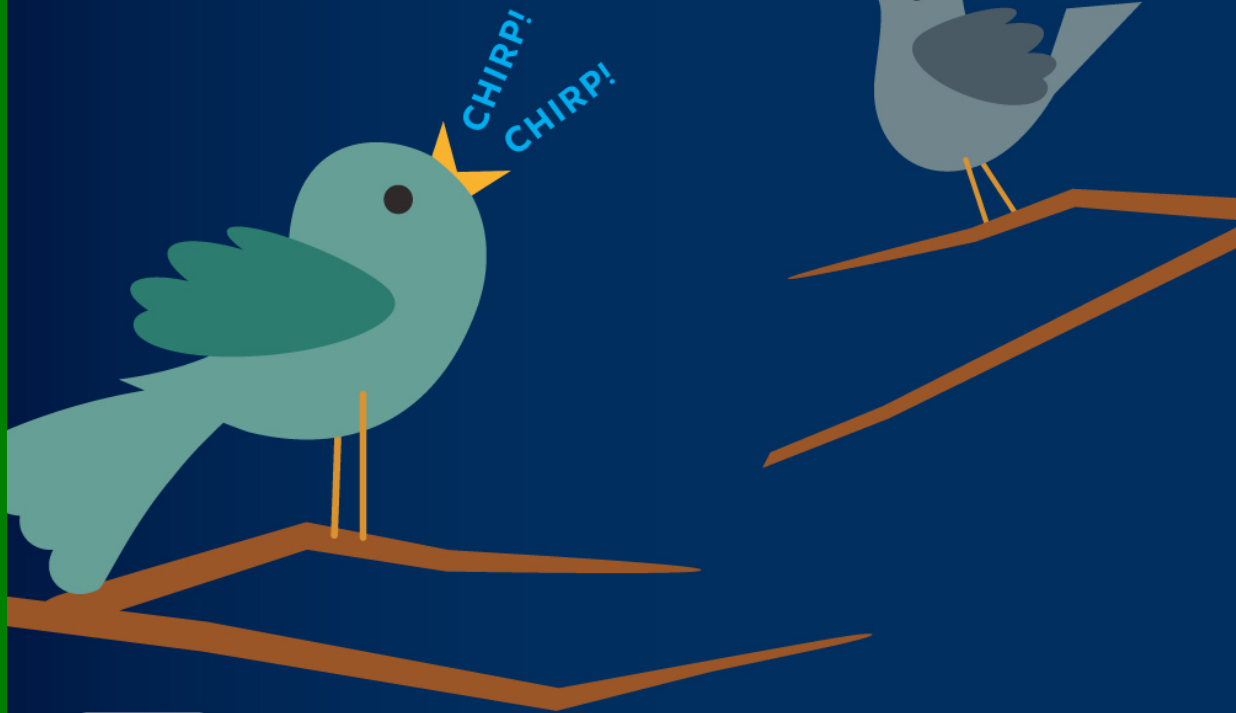


Bill knows a beeping smoke or carbon monoxide alarm means get out and call **9-1-1**.

Be like Bill!

Learn the sounds of fire safety at fpw.org.

Hear a chirp, make a change!
A CHIRPING ALARM means the
battery, or the entire alarm,
must be replaced.



Learn the sounds of fire safety at fpw.org.

\$ BIZRECYCLING®

**Waste Reduction
+ Innovation Grant**

Get up to **\$50k** in
grant dollars for
your business.

Learn more and apply at
BizRecycling.com/Innovation



Sunfish Lake Park Archery Hunt

Sunfish Lake Park will be closed for a deer harvest between 10/25-10/27 and 11/8-11/10. For more information, please check out the Washington County Website at <https://www.co.washington.mn.us/492/Parks>

Notice – Upcoming Archery Deer Harvest

A special permitted archery deer harvest will be conducted at Lake Elmo Park Reserve and Sunfish Lake Park on:

**10/25 – 10/27
&
11/8 – 11/10**

Lake Elmo Park Reserve

Most trails and natural areas are closed to the public. See park website for trails that will remain open (paved trail and a few trails on west side of park).

Sunfish Lake Park

The entire park will be closed to the public.



For more information contact: 651-430-8370

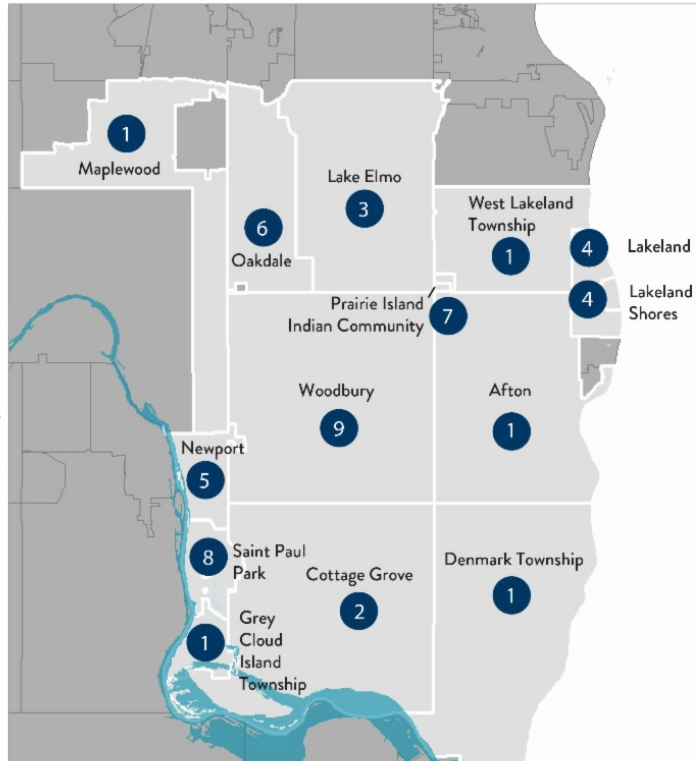
**State announces comprehensive drinking water
plan for 14 East Metro communities impacted by
PFAS**



COMMUNITY PROJECTS

PFAS Health Index at or above 0.5

- 1 **Maplewood, West Lakeland Township, Afton, Grey Cloud Island Township, Denmark Township**
 - Supply private wells with POETSS if over threshold
- 2 **Cottage Grove**
 - Treat 8 of 12 existing public wells
 - Replace 2 existing public wells with 1 new public well that will receive treatment
 - Add 2 new water treatment plants
 - Connect 156 homes
 - Supply other private wells with POETSS if over threshold
- 3 **Lake Elmo**
 - Supply drinking water from a combination of existing wells and new wells or an interconnect with Woodbury*
 - Connect 97 homes
 - Supply other private wells with POETSS if over threshold
- 4 **Lakeland, Lakeland Shores**
 - Connect 29 homes
 - Supply other private wells with POETSS if over threshold
- 5 **Newport**
 - One interconnect with Woodbury and one with Cottage Grove
 - Connect 3 homes
 - Supply other private wells with POETSS if over threshold
- 6 **Oakdale**
 - Treat 2 of 9 existing public wells and expand 1 treatment plant
 - Replace 3 existing public wells with 3 new public wells that will receive treatment
 - Supply other private wells with POETSS if over threshold
- 7 **Prairie Island Indian Community**
 - Treat 1 existing public well
 - Add 1 new water treatment plant
- 8 **Saint Paul Park**
 - Treat 3 of 3 public wells
 - Add 1 new water treatment plant
 - Connect 6 homes
 - Supply other private wells with POETSS if over threshold
- 9 **Woodbury**
 - Treat 15 of 19 existing wells
 - Replace 1 existing public well with 1 new public well
 - Add 1 new water treatment plant
 - Connect 5 homes
 - Supply other private wells with POETSS if over threshold



*The Co-Trustees set aside sufficient capital funding for either an autonomous option (two wells within Lake Elmo's borders that likely will need treatment) or an interconnect between Woodbury and Lake Elmo, due to some uncertainty regarding their future water source.

[Read More Here](#)

Drive Safe. Work Safe. Save Lives.

For the protection of all workers in public right of way, we hope you will help us to get the word out about following work zone rules. The following points from the American Traffic Safety Services Association were shared for work zone awareness week, but are just as important now:

- **Slow down as you approach the work zone.**
- **When possible, safely move over to provide workers with a clear buffer lane from traffic.**
- **If you can't move over safely, reduce your speed to 20 mph below the posted speed limit as you pass the work zone.**
- **Never use your mobile device while operating a vehicle.**



69th Annual Roast Pork & Sauerkraut Supper

Christ Lutheran Church, Lake Elmo
(2nd SATURDAY in October)

Saturday, October 9th

Menu:

Roast Pork, 'Kraut, Mashed Potatoes & Gravy, Pie, & More!

Take-Out Only:

11:00am – 4:00 pm...while supplies last!

Ticket price: \$15.00*

*Only 500 tickets available; All ticket sales at the Church

Sunday - Oct 3rd 9 am – Noon
Monday - Oct 4th 10 am - 2 pm
Wednesday - Oct 6th 10 am - 2 pm
Friday - Oct 8th 9 am – 3 pm
Saturday - Oct 9th 9 am until sold out!

Join Us @

Christ Lutheran Church
11194 36th Street North

651-777-2881; www.christlutheranlakeelmo.org

<https://www.facebook.com/CLCsauerkraut>



New Interactive Parks and Trails Map

In 2021 the City introduced a new Interactive Parks and Trails Map showcasing City Parks, Trailheads, and Trail maps. Check it out [here!](#)



The City, through Living Healthy and Washington County, received grant funding to install bike repair stations in Sunfish lake Park and Ivywood Park. Both repair stations have tools, an air pump and a bike rack.



Bicycle Repair Station Station de réparation de vélos



Living**Healthy**

Washington
County



ADOPT A STORM DRAIN



Storm drains in our city help to protect neighborhoods from flooding, but they also carry litter and polluted runoff from streets and parking lots into nearby lakes and streams.

You can make a difference by volunteering just 15-minutes, twice a month, to keep their nearest storm drain clear of litter, leaves, grass clippings and dirt. To sign up: go to www.Adopt-a-Drain.org and use the map to find your neighborhood storm drains – then click and sign-up to adopt.

Xcel Energy Consumer Update

Xcel Energy residential electric customers who have between \$1,000 to \$4,000 in past due charges are eligible for the Payment Plan Credit Program, which could forgive up to 75% of their past-due balance if they enroll and stay current in a payment plan. Customers can enroll in other payment plans we offer through the My Account feature at www.XcelEnergy.com, or contact customer care at 1-800-895-4999



Sally Manzara Interpretive Nature Center Update

The **Sally Manzara Interpretive Nature Center building in Sunfish Lake Park** is open Monday through Friday 9 AM to 4 PM and Saturday 9-Noon. Please visit our website www.sminc-lake-elmo.org for more information or to sign up for the monthly newsletter.

October Events:

The Friends of Lake Elmo's Sunfish Lake Park are organizing the (almost) **Annual Sunfish Lake Park Buckthorn Removal Festival for Saturday October 23rd at 9:30**. We are inviting local groups to field a team (2 or more) and come to either cut buckthorn regrowth, or assist in the re-seeding of native plants, in parts of the 40-acre area that was cleared this past Winter. If you don't have a team, you are welcome to come as an individual and join a team. **Please contact George (call or text 651-757-5610 , gjohnson2020@gmail.com) if you will be bringing a team.** He will be marking the areas of work.

Lunch will be provided: Buckthorn-roasted hot dogs, chili, chips, cookies, coffee, and cider.

Saturday October 2nd at Noon is Kite Flying Day, weather permitting. Come and learn to make a kite and fly it, or bring your own to fly! This family-friendly event is planned as a monthly activity.

New Series:

Family Nature Exploration Saturdays 10-11am

Oct 9 - Geology Basics & Bring Your Own Rock Collection

Oct 16 - Tree ID & Leaf Window Craft

Oct 23 - Invasive Buckthorn 101 & Whittle a Walking Stick

Oct 30 - Bats & Owls Bird Walk

VIEW A DOZEN EXHIBITS IN THE BUILDING - Sunfish, Bees, Birds, etc. Kid's Play Area, **AED** defibrillator

WHAT YOU CAN SEE OUTDOORS (open whenever the Park is open)

Apiary where the bees are busy making honey for the winter

Story Trail "Bear Snores On"

Prairie Plant Specimen Walk - see each plant as an individual before you walk the prairie trail

Monarch way station - nectar for their migration journey

Messy Play Area - a canoe full of sand, stepping stumps, very slow turtle ride

Big Bird Nest - walk in and pretend to be an eagle, hatch the eggs!

Rain Gardens - program with Washington Conservation District / Valley Branch Watershed District

Three Sisters Garden - cooperation with Dist. 834 NAPAC

Water for your dog, air for your bike tires

Check our website for events and programs <https://sminc-lake-elmo.org/event-descriptions/> and to see the new electronic trail guide to Sunfish Lake Park <https://sminc-lake-elmo.org/trail-info/>



Well sampling in the east metro area

If you live in the area that is a priority for testing, you can request that your private well water be tested.

- To see if you live in the priority sampling area, use the [interactive map](#).
- If you live in the priority sampling area, you can request to have your well tested by filling out and [submitting this online form](#).

More information about the priority testing area is available on the [Well sampling in the East Metro Area](#)

[webpage.](#)

Water Conservation Rebate Program

The City of Lake Elmo, in partnership with the Metropolitan Council, is offering a rebate program for purchases of eligible WaterSense toilets and Smart Irrigation Controllers. Qualifying purchases are eligible for up to a \$200 credit on your water bill.

[Program Details Available Here](#)



Water Wisely: Start in your own backyard

Water is a precious resource needed by all living things. If you care for a yard or garden, you can help protect water resources by being wise about watering practices, starting in your own backyard.

Much of our treated drinking water is also used for landscape irrigation, so it pays to reduce water use and protect our supply by being wise about landscape watering practices at home.

Although all plants need water to be healthy and grow, some—like lawns—actually need less water than we think. While others—like trees—need more. Knowing the what, when, where and how of watering in your garden or landscape is key to growing healthy plants and conserving our precious water supply.

See the University of Minnesota's "Watering Wisely" tips [here](#).

Lake Elmo Library

Stop by Lake Elmo library to check out books, use a computer, reserve a meeting room, and participate in a variety of programs.

Library Hours:

Monday and Friday: 10 a.m.-4 p.m.

Tuesday, Wednesday, and Thursday: 12-8 p.m.

Saturday: 10 a.m.-2 p.m.

Sunday: Closed

Washington County Library Events

Public Facilities Project Update

Regular updates and documents are available [here](#).



CITY OF LAKE ELMO COMBINED CITY HALL & PUBLIC SAFETY FACILITY

The new Lake Elmo City Hall / Public Safety Facility combines City Hall staff and functions, the entire Fire Department, and a satellite office for the Washington County Sheriff's department. This co-location involves renovating and expanding the City-owned Brookfield Office building to concentrate civic resources into a single structure at the historic core of the city. In addition, the Public Works facility will also be expanded to accommodate City growth and expanded service needs.



TOTAL ANTICIPATED PROJECT COST: \$14,600,000
DESIGN COMPLETION: Late summer 2021
CONSTRUCTION COMPLETION: Fall of 2022





MEETING THE DEMANDS OF AN EVOLVING FIRE SERVICE

Lake Elmo currently has two fire stations, Fire Station #1 at 3510 Laverne Ave. N. and Fire Station #2 at 4259 Jamaica Ave. N. This project will consolidate these two stations into a single, state of the art station that will meet the needs of our community and firefighters today and into the future. The building is designed to accommodate increasing call volumes, meet the demands for training and to support our evolving role as all hazard responders.

Due to the changing environment of fire department staffing needs and the impacts of that in relation to incident response times and budget responsibility, the fire department is consolidating to a single station which will allow the department the ability to transition to a staffing model that provides 24/7 coverage from the single station. This change requires the updated facilities like staff dorm rooms, day room and kitchen area, fitness room, staff workspaces and offices.

Educational materials provided by the City of Lake Elmo

For more information, visit our website: www.lakeelmo.org or contact Kristina Handt, Administrator at KHandt@lakeelmo.org



The current fire stations are too small to accommodate modern apparatus and equipment and cannot provide adequate health protections for our firefighters.

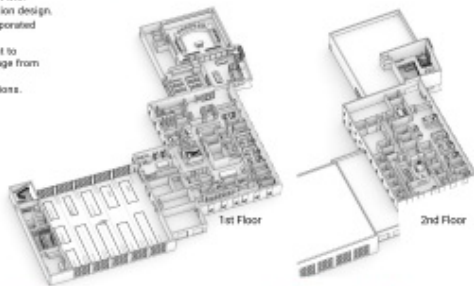
A FUNCTIONAL FIRE STATION

A new, single, state-of-the-art station will meet the needs of our community and firefighters today and into the future. Designed to accommodate our evolving role as all-hazard responders it will:

- Modernize our facilities following best practices in station design.
- Enhance firefighter training with training features incorporated into the building.
- The addition of living quarters will allow the department to transition to a staffing model that provides 24/7 coverage from the single station.
- Improve response times and overall department operations.

DESIGNED FOR FIREFIGHTER HEALTH AND SAFETY

- Distinct spaces to properly decontaminate gear and equipment. Focus to reduce staff exposure to firefighting carcinogens and other toxic materials.
- Properly ventilate the apparatus bay to reduce staff exposure to diesel exhaust and other harmful fumes.
- Space that supports the physical and mental health of staff.
- Clear separation between public and private spaces.



Lake Elmo City Hall, built in 1986, is a very small 2,806 SF. There are insufficient offices for all staff members and the restrooms are not accessible. The council chambers are small, do not provide sufficient space for department heads or members of the public, and lack modern technological updates. City staff have long outgrown this building and have since moved into the Brookfield Building located across the parking lot.

The Brookfield Building was purchased by the City in 2018 as a method of maintaining city functions next to the outgrown City Hall at a lower cost alternative to new construction. It was constructed in 1980 and will require a major overhaul to increase its useful life.

AN EXPANDED AND IMPROVED CITY HALL

- Improved service accessibility
- Community room available for public use
- New council chambers with updated technology
- Additional conference rooms
- Co-locate Washington County Sheriff staff
- Office space for growth of city staff
- Accessible restrooms.

