



fresh

Your Weekly Source for City News and Information

City Services have moved to the City Hall building at 3800 Laverne Avenue

Public Meetings Next Week

- Parks Commission Meeting Monday September 20 - Canceled
- City Council Meeting Tuesday, September 21 - 7:00PM



[City Agendas and Minutes](#)

Visit our website



Tuesday, September 21st City Council Meeting Agenda



NOTICE OF MEETING

City Council Meeting

Tuesday, September 21, 2021 7:00 P.M.

City of Lake Elmo | 3800 Laverne Avenue North

Agenda

A. Call to Order/Pledge of Allegiance

B. Approval of Agenda

C. Approval of Minutes

1. September 7, 2021 and September 14, 2021

D. Public Comments/Inquiries

E. Presentations

F. Consent Agenda

2. Approve Payment of Disbursements
3. Accept August 2021 Public Works Report
4. Accept August 2021 Fire Department Report
5. Accept August 2021 Building Department Report
6. Accept August 2021 Sheriff's Department Report
7. Authorize Application for Sunfish Lake Park Cross Country Trail Grooming Grant – *Resolution 2021-101*
8. Approve Certification of Delinquent Accounts Code Ordinance – Storm Water
9. Approve Oakdale Sewer Service Agreement
10. Approve Step Increase for Utility Billing Clerk
11. Approve Hire of POC Firefighter
12. Approve Pay Request No. 2 for Tamarack Farm Estates Street Improvements
13. Approve Pay Request No. 2 for the 38th-39th Street Neighborhood Street and Utility Improvements
14. Approve Pay Request No. 3 for Old Village Phase 5 and 6 Street and Utility Improvements
15. Approve Pay Request No. 5 for Hamlet on Sunfish Lake Street and Utility Improvements
16. Approve Pay Request No. 5 for Heritage Farms Street and Utility Improvements
17. Approve Release of Utility Warranty Security for Inwood 5th Addition
18. Accept Improvements, Approve Security Reductions, and Approve City Oversize Reimbursements for Four Corners 1st Addition
19. Call for Final Assessment Hearing for Stonegate Addition Street and Utility Improvements – *Resolution 2021-102*
20. Call for Final Assessment Hearing for 31st Street/Stillwater Blvd Watermain Extension – *Resolution 2021-103*

G. Regular Agenda

21. Call for Final Assessment Hearing for Old Village Phase 5 and 6 Street and Utility Improvements – *Resolution 2021-104*
22. 2022 Budget - General Fund and Tax Levy – *Resolution 2021-105*

H. Council Reports

I. Staff Reports and Announcements

J. Adjourn

Meeting Materials Can Be Accessed Here

Minnesota Main Street COVID Relief Grants

The Minnesota Department of Employment and Economic Development will begin taking applications for COVID Relief Grants on **September 20th, 2021**. The program will make available grants to Minnesotan owned and operated businesses effected by COVID-19 ranging from \$10,000-\$25,000.

[Apply Here](#)



 BIZRECYCLING®

**Waste Reduction
+ Innovation Grant**

Get up to **\$50k** in
grant dollars for
your business.

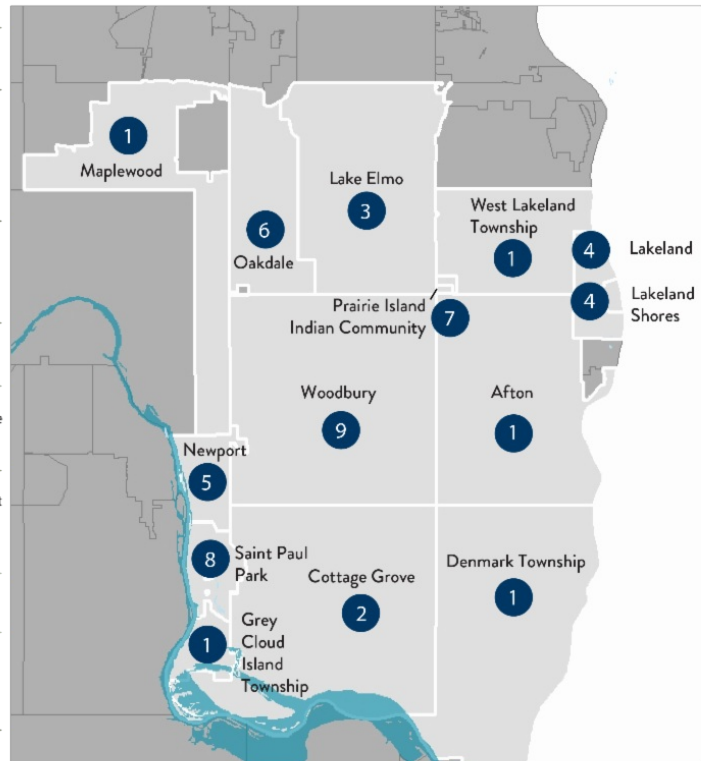
Learn more and apply at
[BizRecycling.com/Innovation](https://bizrecycling.com/Innovation)

**State announces comprehensive drinking water
plan for 14 East Metro communities impacted by
PFAS**

COMMUNITY PROJECTS

PFAS Health Index at or above 0.5

- 1 **Maplewood, West Lakeland Township, Afton, Grey Cloud Island Township, Denmark Township**
 - Supply private wells with POETSS if over threshold
- 2 **Cottage Grove**
 - Treat 8 of 12 existing public wells
 - Replace 2 existing public wells with 1 new public well that will receive treatment
 - Add 2 new water treatment plants
 - Connect 156 homes
 - Supply other private wells with POETSS if over threshold
- 3 **Lake Elmo**
 - Supply drinking water from a combination of existing wells and new wells or an interconnect with Woodbury*
 - Connect 97 homes
 - Supply other private wells with POETSS if over threshold
- 4 **Lakeland, Lakeland Shores**
 - Connect 29 homes
 - Supply other private wells with POETSS if over threshold
- 5 **Newport**
 - One interconnect with Woodbury and one with Cottage Grove
 - Connect 3 homes
 - Supply other private wells with POETSS if over threshold
- 6 **Oakdale**
 - Treat 2 of 9 existing public wells and expand 1 treatment plant
 - Replace 3 existing public wells with 3 new public wells that will receive treatment
 - Supply other private wells with POETSS if over threshold
- 7 **Prairie Island Indian Community**
 - Treat 1 existing public well
 - Add 1 new water treatment plant
- 8 **Saint Paul Park**
 - Treat 3 of 3 public wells
 - Add 1 new water treatment plant
 - Connect 6 homes
 - Supply other private wells with POETSS if over threshold
- 9 **Woodbury**
 - Treat 15 of 19 existing wells
 - Replace 1 existing public well with 1 new public well
 - Add 1 new water treatment plant
 - Connect 5 homes
 - Supply other private wells with POETSS if over threshold



*The Co-Trustees set aside sufficient capital funding for either an autonomous option (two wells within Lake Elmo's borders that likely will need treatment) or an interconnect between Woodbury and Lake Elmo, due to some uncertainty regarding their future water source.

[Read More Here](#)

Are There Forever Chemicals In Your Water Well?

A [research team](#) from Indiana University and RTI International, a nonprofit research institute, is seeking help from citizen scientists in Washington County for its study of a group of chemicals known as PFAS, or 'forever chemicals' in private wells.

[Find out if you're eligible for well testing here.](#)

Small-scale Construction

Prevent erosion and protect Minnesota's water during construction, remodeling and landscaping projects.

Bare soil can erode easily during construction and landscaping projects. Though soil is natural, it can pollute lakes, rivers and streams by smothering habitat and making the water cloudy and unsafe for swimming.



Stormwater Pollution Prevention

Building a new home?

Refer to the diagram on the back of this page for guidance on preventing erosion and stormwater pollution.

When construction is in progress, verify that your builder has installed silt fence or other sediment control measures along the down slope perimeter of your property and near curbs, gutters, ditches, streams, lakes and wetlands. All bare soil must be covered and soil piles must be stabilized as well.

As a homeowner, you are responsible for inspecting and maintaining temporary stabilization measures until permanent ground cover is established on your yard. Reinstall or replace ripped, collapsed, or decomposed silt fence and remove sediment if deposits reach 1/3 of the silt fence height. Use downspout extenders to protect temporarily stabilized areas from roof runoff until permanent vegetation is established.

Establishing a new lawn?

Cover bare soil with erosion control fabric, mulch, or quick-growing annual grasses such as annual rye, oats or winter wheat until you are able to lay sod or seed your lawn. Erosion control fabric can also help to protect hilly areas until new grass is fully established.

Beginning a landscaping project?

Schedule large landscaping projects for dry weather. Cover bare soil with mulch and avoid disturbing the soil along stream banks and lakeshores. Study how water flows across your property and use trees, shrubs, deep-rooted native plants, and raingardens to slow down runoff and prevent erosion.

We need your help to keep our waters clean!

Learn more about Minnesota water at www.pca.state.mn.us/water/construction-stormwater

Since the start of 2020 we've applied rebates for 80 smart irrigation controllers and efficient toilets, totaling over \$10,000 in credits to water bills. These efficient devices are expected to save over 749,000 gallons of water per year!

Program information and rebate forms are available here:
<http://www.lakeelmo.org/residents/water.php>

How much water can we save each year?

The smart irrigation controllers and efficient toilets installed through the City of Lake Elmo Water Rebate Program are estimated to save over 749,000 gallons of water per year!

That's enough to fill -

Lake Elmo Fire Tender 1
374 times



Como Harbor 3 times



Drive Safe. Work Safe. Save Lives.

For the protection of all workers in public right of way, we hope you will help us to get the word out about following work zone rules. The following points from the American Traffic Safety Services Association were shared for work zone awareness week, but are just as important now:

- Slow down as you approach the work zone.
- When possible, safely move over to provide workers with a clear buffer lane from traffic.
- If you can't move over safely, reduce your speed to 20 mph below the posted speed limit as you pass the work zone.
- Never use your mobile device while operating a vehicle.

New Interactive Parks and Trails Map

In 2021 the City introduced a new Interactive Parks and Trails Map showcasing City Parks, Trailheads, and Trail maps. Check it out [here!](#)



The City received grant funding to install bike repair stations in Sunfish lake Park and Ivywood Park. Both repair stations have tools, an air pump and a bike rack.



Washington County Sheriff Department

If you are planning on being away from home or on vacation please follow some of the tips below to increase the safety and security of your property.

1. Lock all of the doors and windows.
2. Clear out the mailbox and notify the post office to hold your mail until you return. If you are having packages delivered be sure to use the package tracking options and arrange for the package to be picked up by a friend or family member.
3. Keep the yard and/or driveway maintained. Removal of snow from the driveway and walking paths is important.
4. Hide or secure your valuables from view of windows. Using safes is helpful in securing important items.
5. Don't broadcast your plans of being gone on social media. Only notify those who will be helping you in keeping an eye on your residence like a neighbor, family or friends.
6. Get your security system updated, tested and notified of your vacancy. Posting security signage in your yard on residence can help with deterrence of theft and burglary. Many door camera systems can be purchased at a reasonable price with instant notification of activity at your residence while you are away.
7. Adjust your heating settings especially as temperatures can drop significantly this time of year to avoid frozen water lines.
8. Security lighting and timers. The proper lighting on your residence can help to deter theft.
9. Request vacation checks through the Sheriff's Office while you are out of town.

These are just a few quick steps you can take to increase the security of your home while you are away. If you are interested in receiving information on vacation checks call our non-emergency number 651-439-9381

**ADOPT
A STORM
DRAIN**



Storm drains in our city help to protect neighborhoods from flooding, but they also carry litter and polluted runoff from streets and parking lots into nearby lakes and streams.

You can make a difference by volunteering just 15-minutes, twice a month, to keep their nearest storm drain clear of litter, leaves, grass clippings and dirt. To sign up: go to www.Adopt-a-Drain.org and use the map to find your neighborhood storm drains – then click and sign-up to adopt.

Xcel Energy Consumer Update

Xcel Energy residential electric customers who have between \$1,000 to \$4,000 in past due charges are eligible for the Payment Plan Credit Program, which could forgive up to 75% of their past-due balance if they enroll and stay current in a payment plan. Customers can enroll in other payment plans we offer through the My



Sally Manzara Interpretive Nature Center Update

The **Sally Manzara Interpretive Nature Center building in Sunfish Lake Park** is open Monday through Friday 9 AM to 4 PM and Saturday 9-Noon. Please visit our website www.sminc-lake-elmo.org for more information or to sign up for the monthly newsletter.

EXHIBITS IN THE BUILDING

Sunfish Aquarium

Beehive behind glass for observing the bees in action

Park History

Park Geology

Butterflies

Aquatic Life

Native American Culture

Birds in the Park

Ecosystems in the Park

Prairie Restoration at Sunfish Lake Park - what lives here

Forest Floor - flowers and mushrooms.

3D printed insects

Weather Station

Kids Play areas

AED defibrillator

WHAT YOU CAN SEE OUTDOORS (open whenever the Park is open)

Apiary where the bees are busy making honey for the winter

Story Trail "Planting a Rainbow" - in cooperation with the County Library

Prairie Plant Specimen Walk - see each plant as an individual before you walk the prairie trail

Monarch way station - nectar for their migration journey

Messy Play Area - a canoe full of sand, stepping stumps, very slow turtle ride

Big Bird Nest - walk in and pretend to be an eagle

Rain Gardens - program with Washington Conservation District

/ Valley Branch Watershed District
Three Sisters Garden - cooperation with Dist. 834 NAPAC
Water for your dog, air for your bike tires

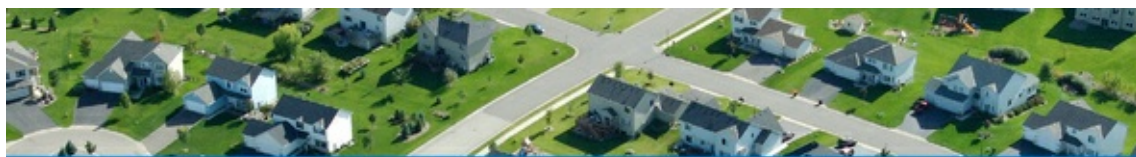
Check our website for events and programs

Coming up -

Kite Flying - Saturday October 2nd at Noon

Buckthorn Removal Day - Saturday Oct 9th - 9:30 AM or call 651-757-5610

Buckthorn Removal Festival Saturday October 23rd - bring your team and compete, free lunch for workers



3M East Metro Settlement Updates

m MINNESOTA

Well sampling in the east metro area

If you live in the area that is a priority for testing, you can request that your private well water be tested.

- To see if you live in the priority sampling area, use the [interactive map](#).
- If you live in the priority sampling area, you can request to have your well tested by filling out and [submitting this online form](#).

More information about the priority testing area is available on the Well sampling in the [East Metro Area webpage](#).

Water Conservation Rebate Program

The City of Lake Elmo, in partnership with the Metropolitan Council, is offering a rebate program for purchases of eligible WaterSense toilets and Smart Irrigation Controllers. Qualifying purchases are eligible for up to a \$200 credit on your water bill.

[Program Details Available Here](#)



Water Wisely: Start in your own backyard

Water is a precious resource needed by all living things. If you care for a yard or garden, you can help protect water resources by being wise about watering practices, starting in your own backyard.

Much of our treated drinking water is also used for landscape irrigation, so it pays to reduce water use and protect our supply by being wise about landscape watering practices at home.

Although all plants need water to be healthy and grow, some—like lawns—actually need less water than we think. While others—like trees—need more. Knowing the what, when, where and how of watering in your garden or landscape is key to growing healthy plants and conserving our precious water supply.

See the University of Minnesota's "Watering Wisely" tips [here](#).



New Lake Elmo Library Hours

Lake Elmo Library is returning to pre-pandemic hours beginning June 1! Stop by the library to check out books, use a computer, reserve a meeting room, and participate in a variety of summer programs.

Library Hours:

Monday and Friday: 10 a.m.-4 p.m.

Tuesday, Wednesday, and Thursday: 12-8 p.m.

Saturday: 10 a.m.-2 p.m.

Sunday: Closed

Learn more about current library services at WashCoLib.org/Covid19

Summer Reading at your Library

Summer Reading programs for kids, teens, and adults run from June 1-August 31.

To get started, stop by any WashCoLib branch to pick up a game card with activities to complete over the summer. You can also download game cards on the library's website or complete the program entirely online. When you're finished, drop your game card off to get a reward and enter our drawings for a prize. Learn more at WashCoLib.org

Washington County Library Events

Public Facilities Project Update

Regular updates and documents are available [here](#).



- 1 New City Hall Entrance
- 2 New Fire Station Expansion
- 3 Council Chambers/Community room addition
- 4 Parking
- 5 Fire Department Parking
- 6 City Hall/Sheriff
- 7 Laverne Avenue

LEO A DALY

CITY OF LAKE ELMO COMBINED CITY HALL & PUBLIC SAFETY FACILITY

The new Lake Elmo City Hall / Public Safety Facility combines City Hall staff and functions, the entire Fire Department, and a satellite office for the Washington County Sheriff's department. This co-location involves renovating and expanding the City-owned Brookfield Office building to concentrate civic resources into a single structure at the historic core of the city. In addition, the Public Works facility will also be expanded to accommodate City growth and expanded service needs.



TOTAL ANTICIPATED PROJECT COST: \$14,600,000
DESIGN COMPLETION: Late summer 2021
CONSTRUCTION COMPLETION: Fall of 2022





MEETING THE DEMANDS OF AN EVOLVING FIRE SERVICE

Lake Elmo currently has two fire stations, Fire Station #1 at 3510 Laverne Ave. N. and Fire Station #2 at 4259 Jamaica Ave. N. This project will consolidate these two stations into a single, state-of-the-art station that will meet the needs of our community and firefighters today and into the future. The building is designed to accommodate increasing call volumes, meet the demands for training and to support our evolving role as all hazard responders.

Due to the changing environment of fire department staffing needs and the impacts of that in relation to incident response times and budget responsibility, the fire department is consolidating to a single station which will allow the department the ability to transition to a staffing model that provides 24/7 coverage from the single station. This change requires the updated facilities like staff dorm rooms, day room and kitchen area, fitness room, staff workspaces and offices.

Educational materials provided by the City of Lake Elmo
 For more information, visit our website: www.lakeelmo.org or contact Kristina Handt, Administrator at KHandt@lakeelmo.org



The current fire stations are too small to accommodate modern apparatus and equipment and cannot provide adequate health protections for our firefighters.

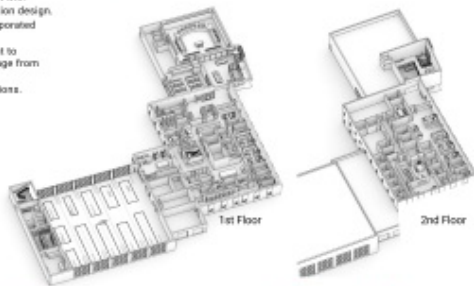
A FUNCTIONAL FIRE STATION

A new, single, state-of-the-art station will meet the needs of our community and firefighters today and into the future. Designed to accommodate our evolving role as all-hazard responders it will:

- Modernize our facilities following best practices in station design.
- Enhance firefighter training with training features incorporated into the building.
- The addition of living quarters will allow the department to transition to a staffing model that provides 24/7 coverage from the single station.
- Improve response times and overall department operations.

DESIGNED FOR FIREFIGHTER HEALTH AND SAFETY

- Distinct spaces to properly decontaminate gear and equipment. Focus to reduce staff exposure to firefighting carcinogens and other toxic materials.
- Properly ventilate the apparatus bay to reduce staff exposure to diesel exhaust and other harmful fumes.
- Space that supports the physical and mental health of staff.
- Clear separation between public and private spaces.



Lake Elmo City Hall, built in 1986, is a very small 2,806 SF. There are insufficient offices for all staff members and the restrooms are not accessible. The council chambers are small, do not provide sufficient space for department heads or members of the public, and lack modern technological updates. City staff have long outgrown this building and have since moved into the Brookfield Building located across the parking lot.

The Brookfield Building was purchased by the City in 2018 as a method of maintaining city functions next to the outgrown City Hall at a lower cost alternative to new construction. It was constructed in 1980 and will require a major overhaul to increase its useful life.

AN EXPANDED AND IMPROVED CITY HALL

- Improved service accessibility
- Community room available for public use
- New council chambers with updated technology
- Additional conference rooms
- Co-locate Washington County Sheriff staff
- Office space for growth of city staff
- Accessible restrooms.

