



# fresh

Your Weekly Source for City News and Information

## City Services have moved to the City Hall building at 3800 Laverne Avenue

### Public Meetings Next Week

- Parks Commission Meeting Monday, August 16 - CANCELLED
- City Council Meeting Tuesday, August 17 7:00PM



[City Agendas and Minutes](#)

Visit our website



## Tuesday, August 17 City Council Meeting Agenda



## NOTICE OF MEETING

### City Council Meeting

Tuesday, August 17, 2021 7:00 P.M.

City of Lake Elmo | 3800 Laverne Avenue North

## Agenda

### A. Call to Order/Pledge of Allegiance

### B. Approval of Agenda

### C. Approval of Minutes

1. August 4, 2021, August 10, 2021

### D. Public Comments/Inquiries

### E. Presentations

National Night Out Proclamation

### F. Consent Agenda

2. Approve Payment of Disbursements
3. Accept July 2021 Building Department Report
4. Accept July 2021 Public Works Department Report
5. Accept July 2021 Fire Department Report
6. Accept July 2021 Sheriff's Department Report
7. Approve Hire of Paid on Call Firefighters
8. Approve Pay Request No. 2 (FINAL) for the 50th Street PRV Valve & Linden Ave Storm Sewer Replacement.
9. Approve Pay Request No. 1 for Tamarack Farm Estates Street Improvements.
10. Approve Pay Request No. 1 for the 38th-39th Street Neighborhood Street and Utility Improvements.
11. Approve Pay Request No. 4 for Heritage Farms Street and Utility Improvements.
12. Approve Pay Request No. 4 for Hamlet on Sunfish Lake Street and Utility Improvements.
13. Approve Pay Request No. 8 for Well No. 5 Pumphouse Improvements.
14. Approve Compensating Change Order No. 3 for 31st Street/Stillwater Blvd Watermain Extension.
15. Approve Pay Request No. 3 (FINAL) for 31st Street/Stillwater Blvd Watermain Extension.
16. Approve East Metro Water Resource Education Program Contract
17. Approve Cooperative Agreement Between the City of Oakdale and City of Lake Elmo for Sanitary Sewer Lift Station Improvements and Approve SEH Sewer Design Services – *Resolution 2021-087, 2021-088*
18. Approve Cooperative Agreements for the CSAH13 (Ideal Avenue) Phase 2 Improvements
19. Authorize Preparation of Feasibility Report for 2022 Street and Utility Improvements – *Resolution 2021-089*

### G. Regular Agenda

20. Variances and Lot Division – 3100 Lake Elmo Avenue (Dorschner) - *Resolution 2021-090, 2021-091*
21. Direct Access Variance – 8249 Demontreville Trail (Carmelites) – *Resolution 2021-092*

### H. Council Reports

### I. Staff Reports and Announcements

### J. Adjourn

Meeting Materials Can Be Accessed Here

# FOOD TRUCK

W E D N E S D A Y S



**11AM-3PM**

JUNE 2, 16 & 30

JULY 14 & 28

AUGUST 11 & 25

**4PM-8PM**

JUNE 9 & 23

JULY 7 & 21

AUGUST 4 & 18



ARBOR GLEN SENIOR LIVING  
11020 39TH ST N  
LAKE ELMO, MN 55042

VISIT ARBOR GLEN OR THE FIELDS  
ON FACEBOOK TO DISCOVER THE  
FOOD TRUCK(S) OF THE WEEK!

OR CALL US AT 651-704-1444

[WWW.ARBORSENIOR.COM](http://WWW.ARBORSENIOR.COM) [WWW.FIELDSATARBORGLEN.COM](http://WWW.FIELDSATARBORGLEN.COM)



## Are There Forever Chemicals In Your Water Well?

A research team from Indiana University and RTI International, a nonprofit research institute, is seeking help from citizen scientists in Washington County for its study of a group of chemicals known as PFAS, or 'forever chemicals' in private wells.

# FOOD TRUCK FRIDAY!

COMMUNITY EVENT

Fridays from 4:30 - 7:00 pm



## Mahtomedi District Education Center

1520 Mahtomedi Ave, Mahtomedi

- April 16 iPierogi + Xssant
- May 21 El Pariente + D and D Goodies Asian flair + KP Concessions Mini Donuts
- June 18 Up in Smoke + KEO's Shave Ice
- July 23 Pig Approved BBQ + Maui Wowie
- August 13 The Big Cheese + Cookies & Cream Scoop Shop

*Yard Games! Outdoor seating only.  
Bring a lawn chair or blanket.  
Rain or Shine.*

## White Bear Area Senior Center

2484 E County Rd F, WBL

- April 23 iPierogi + Droolin' Moose
- May 14 Pig Approved BBQ + Cookies & Cream Scoop Shop
- June 25 KCM Egg Rolls
- July 16 Up in Smoke + KEO's Shave Ice
- August 20 The Big Cheese + Maui Wowie

*Indoor/Outdoor seating.  
Or bring a lawn chair.  
Rain or Shine*



**Grab & Go or Stay & Eat!**

*A portion of proceeds are donated back to:  
White Bear Lake / Support Senior Programs  
Mahtomedi / Support Community Ed Scholarships*



## Watering Restrictions Reminder

Public Works staff installed signs across town as reminders of the new watering restrictions in place.

At the regular City Council meeting on Tuesday, July 20th the City Council adopted Ordinance No 08-245 which amends the hours watering is prohibited to 5am-6pm. Odd/Even Watering restrictions are still in place.





## **FOR IMMEDIATE RELEASE**

**July 29, 2021**

Lake Elmo, MN -- JCI Lake Elmo (formerly known as the Lake Elmo Jaycees) is thrilled to present the 44TH Annual Huff n' Puff Days August 12th - 15th, 2021. Following a one-year hiatus, Huff n' Puff Days is back with its famous 96-team slow pitch softball tournament taking place over four days, beginning on Thursday, August 12th. Both Men's and Women's slow pitch softball teams will compete over the weekend with championship games on Sunday, August 15th at Lions Park.

Join us at this annual fundraiser to support community and youth activities in the St. Croix River Valley Area. Tournament headquarters is located at Lions Park in Lake Elmo, and several other ball fields are used throughout the four-day tournament.

### **LIVE DRAW EVENT**

To kick-off the tournament, JCI Lake Elmo will host a random live draw of Men's and Women's softball team placements for the tournament this year. Bring your teammates, friends, and family to hear where you'll be placed in the big tournament! Rules, rosters, Q&A, etc. will be also be discussed at this event. All teams are required to have 1 person present. Date, Time and Location: Sunday, August 3rd beginning at 3pm at Stillwater Event Center, 1910 Greeley Street S., Stillwater, MN.

### **SOFTBALL TOURNAMENT GAMES**

Thursday and Friday evenings, all-day Saturday and Sunday.

Available at Lion's Park:

### **FOOD, BEVERAGES, & TENT**

Thursday 5:30pm-10:30pm, Friday 5:30pm-midnight, Saturday 8am-midnight, Sunday

10am-8pm. New this year, food trucks from the Twin Cities will be on-site at Lions Park. Tournament organizers have secured a large tent and space for DJ.

**ATM'S ON-SITE**

We will have ATM's on-site to make your experience at Huff n' Puff days easier.

For up-to-date information about this event, visit our Facebook page at [www.facebook.com/huffnpuffdays](http://www.facebook.com/huffnpuffdays) or website at [www.lakeelmojaycees.org](http://www.lakeelmojaycees.org) . For additional information or if you have questions, please contact [huffnpuff@lakeelmojaycees.org](mailto:huffnpuff@lakeelmojaycees.org)

**JCI Lake Elmo "Leadership Development through Community Involvement."**

We support the City of Lake Elmo and surrounding St. Croix River Valley communities by giving our time and financial support for community and youth projects. Huff n' Puff is our primary fundraiser to support these projects. If you would like more information about our organization, please visit our website at [www.lakeelmojaycees.org](http://www.lakeelmojaycees.org).

# Small-scale Construction

Prevent erosion and protect Minnesota's water during construction, remodeling and landscaping projects.

Bare soil can erode easily during construction and landscaping projects. Though soil is natural, it can pollute lakes, rivers and streams by smothering habitat and making the water cloudy and unsafe for swimming.



## Stormwater Pollution Prevention

### Building a new home?

Refer to the diagram on the back of this page for guidance on preventing erosion and stormwater pollution.

When construction is in progress, verify that your builder has installed silt fence or other sediment control measures along the down slope perimeter of your property and near curbs, gutters, ditches, streams, lakes and wetlands. All bare soil must be covered and soil piles must be stabilized as well.

As a homeowner, you are responsible for inspecting and maintaining temporary stabilization measures until permanent ground cover is established on your yard. Reinstall or replace ripped, collapsed, or decomposed silt fence and remove sediment if deposits reach 1/3 of the silt fence height. Use downspout extenders to protect temporarily stabilized areas from roof runoff until permanent vegetation is established.

### Establishing a new lawn?

Cover bare soil with erosion control fabric, mulch, or quick-growing annual grasses such as annual rye, oats or winter wheat until you are able to lay sod or seed your lawn. Erosion control fabric can also help to protect hilly areas until new grass is fully established.

### Beginning a landscaping project?

Schedule large landscaping projects for dry weather. Cover bare soil with mulch and avoid disturbing the soil along stream banks and lakeshores. Study how water flows across your property and use trees, shrubs, deep-rooted native plants, and raingardens to slow down runoff and prevent erosion.

## We need your help to keep our waters clean!

Learn more about Minnesota water at [www.pca.state.mn.us/water/construction-stormwater](http://www.pca.state.mn.us/water/construction-stormwater)

Since the start of 2020 we've applied rebates for 80 smart irrigation controllers and efficient toilets, totaling over \$10,000 in credits to water bills. These efficient devices are expected to save over 749,000 gallons of water per year!

Program information and rebate forms are available here:  
<http://www.lakeelmo.org/residents/water.php>



# How much water can we save each year?

The smart irrigation controllers and efficient toilets installed through the City of Lake Elmo Water Rebate Program are estimated to save over 749,000 gallons of water per year!

That's enough to fill -

Lake Elmo Fire Tender 1  
374 times



Como Harbor 3 times



## 10 Steps to Stormwater Pollution Prevention on Small Residential Construction Sites

*Note: this graphic does not address post-construction stormwater treatment permit requirements.*

### 1 Protect Any Areas Reserved for Vegetation or Infiltration and Preserve Existing Trees

If you will be installing infiltration-based features such as rain gardens or bioswales, make sure these areas are designated as off limits to avoid compaction.

Save time and money by preserving existing mature trees during construction. Preserving mature trees minimizes the amount of soil that needs to be stabilized once construction is complete, and minimizes the amount of runoff during and after construction activity.

### 2 Stockpile Your Soil

MPCA's CCP requires operators to preserve native topsoil on site unless infeasible and protect all soil storage piles from run-on and runoff. For smaller stockpiles, covering the entire pile with a tarp may be sufficient.

### 3 Protect Construction Materials from Run-On and Runoff

At the end of every workday and during precipitation events, provide cover for materials that could leach pollutants.

### 4 Designate Waste Disposal Areas

Clearly identify separate waste disposal areas on site for hazardous waste, construction waste, and domestic waste by designating with signage, and protect from run-on and runoff.

### 5 Install Perimeter Controls on Downhill Let Line

Install perimeter controls such as sediment filter bags or silt fences around the downhill boundaries of your site. Make sure to remove accumulated sediment whenever it has reached halfway up the control.

### 6 Install Inlet Controls

Sediment control logs, gravel barriers, and sand or rock bags are options for effective inlet controls. Make sure to remove accumulated sediment whenever it has reached halfway up the control.

### 7 Install a Concrete/Stucco Washout Basin

Designate a leak-proof basin lined with plastic for washing out used concrete and stucco containers. Never wash excess stucco or concrete residue down a storm drain or into a stream!

### 8 Maintain a Stabilized Exit Pad

Minimize sediment track out from vehicles exiting your site by maintaining an exit pad made of crushed rock spread over geotextile fabric, a shaker rack, or a wash rack at the construction site exit. If sediment track-out occurs, remove deposited sediment within 24 hours of discovery.

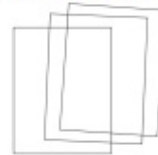
### 9 Keep an Up-to-Date Copy of Your SWPPP on Site

Keep a copy of your complete and up-to-date SWPPP, including site maps showing where each BMP is or will be installed, and records of the site inspections completed by a trained inspector on site and easily accessible.

### 10 Site Stabilization

Immediately stabilize exposed portions of the site whenever construction work will stop for 14 or more days, even if work is only temporarily stopped. Remember, final stabilization is required prior to terminating permit coverage.

Keep in mind that temporary or permanent stabilization must be completed within 7 days if your project is within 1 mile of a special or impaired water.



## Small-scale Construction Considerations

Thanks for doing your part to protect Minnesota water!

[www.pca.state.mn.us/water/construction-stormwater](http://www.pca.state.mn.us/water/construction-stormwater)

For more information, contact  
your city or watershed  
management organization.

For the protection of all workers in public right of way, we hope you will help us to get the word out about following work zone rules. The following points from the American Traffic Safety Services Association were shared for work zone awareness week, but are just as important now:



# Drive Safe. Work Safe. Save Lives.

- Slow down as you approach the work zone.
- When possible, safely move over to provide workers with a clear buffer lane from traffic.
- If you can't move over safely, reduce your speed to 20 mph below the posted speed limit as you pass the work zone.
- Never use your mobile device while operating a vehicle.

## Safe Disposal of Chlorinated Water

As you prepare to drain your swimming pool or spa at the end of the summer, it is important to take steps to prevent chlorinated water from flowing into storm sewers or nearby waterways.

### To properly dispose of chlorinated water:

Stop adding chlorine and leave your pool or spa uncovered for 3-5 days. The chlorine should naturally break-down during this time. Alternately, you can add a de-chlorinating chemical to treat the water more quickly.

Once water is de-chlorinated, you can safely discharge it to a sanitary sewer or storm sewer. If possible, allow the water to flow over a vegetated surface first so that some is able to soak into the ground.



**Take care when  
draining pools  
and spas this fall**

### What do I do with filter and back wash waste?

Wastes from pool filters and back wash systems are not allowed in the storm sewer system. Backwash water needs to be directed to the sanitary sewer. Pool filters can be placed with your regular garbage.



### Streets connect to streams

Rain and melting snow wash pollutants off of rooftops, driveways, streets and lawns and into local wetlands, streams, lakes and rivers via storm sewer systems and roadside ditches. Keep chlorinated water out of our streets and out of our streams.



### To report storm water pollution in your community please call:

or make an on-line report at:

### Other ways to keep our water clean:

1. Fertilize lightly, and use phosphorus-free lawn fertilizer.
2. Mow high and let it lie. Keep leaves and grass clippings in your yard and out of the street.
3. Use a car wash instead of your driveway to keep dirt, oil and soap out of the storm drain.
4. Pick up your pet's waste and dispose of it in the trash.
5. Fix your car's leaks and use care when fueling to avoid spills.
6. Take paints, solvents, and cleaners to a hazardous waste facility.
7. Create a beautiful, low-maintenance yard that helps to keep our water clean. Go to [www.BlueThumb.org](http://www.BlueThumb.org) to learn more.

## CHLORINE

**Good** for Swimming  
Pools and Spas

**Bad** for Lakes  
and Rivers



*How to safely dispose of  
chlorinated water*

### Why should I be concerned?

Water from swimming pools and hot tubs (spas) often contains high levels of chlorine, bromine, and copper. It is also very corrosive due to low pH levels and may contain organic matter. If you discharge untreated pool or spa water into the street or local waters, you can kill fish and aquatic life.

**It is illegal to discharge chlorinated water to a municipal storm sewer system!**



### Can treated pool or spa water be discharged to the storm sewer system?

Yes, but only if the water has been dechlorinated (to less than 0.1 mg/L of chlorine), has a pH range of 7-8, consists only of water, and is discharged in a way that does not cause nuisance conditions or erosion problems.



### How can I get rid of chlorine?

Stop adding chlorine and leave the water exposed to the air for three to five days. The water will become naturally dechlorinated.

You can also use de-chlorinating chemicals from a pool or spa supplier to remove the chlorine more quickly. Chlorine and pH test kits are available to test levels in water.



### Can pool or spa water be discharged to the sanitary sewer system?

Chlorine, in small amounts, is typically not a problem for municipal water plants. If you can easily discharge your pool or spa water to your private sanitary drain, residential and small pool and spa owners may discharge to the sanitary sewer.

Large pool owners should contact their city for approval, prior to discharging to the sanitary sewer.

### Can I discharge my pool or spa water into my yard?

Yes, but only if tests show that the water is de-chlorinated (to less than 0.1 mg/L of chlorine) has a pH of 7-8, and is free of other debris.

The water should be directed onto a vegetated surface so that it soaks into the ground. The water should not flow onto any other person's property or create nuisance conditions such as erosion or ponding for a prolonged period.



## Bee Lawns & Lawn Alternatives

Have you heard the "buzz" about low-mow grass, bee-friendly lawns, and other turf alternatives? During this free webinar, we'll talk about the pros and cons of different types of lawn and provide guidance on transforming your conventional lawn into a low-mow or bee-friendly landscape this fall. Presented by: James Wolfin, an entomologist and sustainable land care manager at Metro Blooms and Angie Hong, water education specialist with East Metro Water Education Program

September 15, 6-730PM [Register Here](#)



## Metropolitan Mosquito Control District trucks, helicopters, and staff will be out in neighborhoods and parks this summer working to reduce mosquito-borne disease and annoyance.

Summer weather in Minnesota means we are starting to see an increase in mosquitoes and the Metropolitan Mosquito Control District (MMCD) will be out conducting surveillance and treatment activities to reduce the risk of disease and annoyance in an environmentally-sensitive manner.

Each year the field staff at MMCD monitors and treats wetlands that breed mosquitoes with a fleet of trucks and helicopters. With many people still working from home during the weekday due to the COVID-19 pandemic, more people may notice



MMCD activities in local neighborhoods and parks. At times MMCD employees may need to cross private property for access to check and treat areas for mosquito larvae. MMCD management asks the community to please stay several feet away from field staff and ensure children and pets are kept at a distance. If you have questions about mosquito control activities or concerns about an employee, please call the MMCD front desk at (651) 645-9149 or visit [MMCD.org](http://MMCD.org).

## New Interactive Parks and Trails Map

In 2021 the City introduced a new Interactive Parks and Trails Map showcasing City Parks, Trailheads, and Trail maps. Check it out [here!](#)



## The City of Lake Elmo is Accepting Applications for the Following Positions:

- Building Official
- Paid on Call Firefighters

[Visit our website](#)



# Washington County Sheriff Department

If you are planning on being away from home or on vacation please follow some of the tips below to increase the safety and security of your property.

1. Lock all of the doors and windows.
2. Clear out the mailbox and notify the post office to hold your mail until you return. If you are having packages delivered be sure to use the package tracking options and arrange for the package to be picked up by a friend of family member.
3. Keep the yard and/or driveway maintained. Removal of snow from the driveway and walking paths is important.
4. Hide or secure your valuables from view of windows. Using safes is helpful in securing important items.
5. Don't broadcast your plans of being gone on social media. Only notify those who will be helping you in keeping an eye on your residence like a neighbor, family or friends.
6. Get your security system updated, tested and notified of your vacancy. Posting security signage in your yard on residence can help with deterrence of theft and burglary. Many door camera systems can be purchased at a reasonable price with instant notification of activity at your residence while you are away.
7. Adjust your heating settings especially as temperatures can drop significantly this time of year to avoid frozen water lines.
8. Security lighting and timers. The proper lighting on your residence can help to deter theft.
9. Request vacation checks through the Sheriff's Office while you are out of town.

These are just a few quick steps you can take to increase the security of your home while you are away. If you are interested in receiving information on vacation checks call our non-emergency number 651-439-9381



## HIGHWAY 36 AND MANNING AVENUE INTERCHANGE PROJECT

Washington  
County

### **New Construction Update Available**

Follow the link below to see the latest Construction Update:

[Construction Update: June 14, 2021](#)

To learn more about the project, visit the project website at:

[www.co.washington.mn.us/Manning36Interchange](http://www.co.washington.mn.us/Manning36Interchange)

### **County Highway 13 (Ideal Avenue) Phase II**

Washington County in partnership with the City of Lake Elmo are providing an online project update on the proposed improvements to Ideal Avenue between County Highway 14 and 44th Street. The

project website provides program information and updates.

[Project Website](#)



**ADOPT  
A STORM  
DRAIN**



Storm drains in our city help to protect neighborhoods from flooding, but they also carry litter and polluted runoff from streets and parking lots into nearby lakes and streams.

You can make a difference by volunteering just 15-minutes, twice a month, to keep their nearest storm drain clear of litter, leaves, grass clippings and dirt. To sign up: go to [www.Adopt-a-Drain.org](http://www.Adopt-a-Drain.org) and use the map to find your neighborhood storm drains – then click and sign-up to adopt.

### **Xcel Energy Consumer Update**

Xcel Energy residential electric customers who have between \$1,000 to \$4,000 in past due charges are eligible for the Payment Plan Credit Program, which could forgive up to 75% of their past-due balance if they enroll and stay current in a payment plan. Customers can enroll in other payment plans we offer through the My Account feature at [www.XcelEnergy.com](http://www.XcelEnergy.com), or contact customer care at 1-800-895-4999





## LAKE ELMO FARMER'S MARKET

We are open every Saturday 9am to 1pm thru September 4<sup>th</sup>

Located at Lake Elmo Elementary School (off Stillwater Blvd & Lake Elmo Ave.)

Join us this week (8/14) for the market and a demo by the Washington County k9 Unit! (Demo will take place about 10:30/11am)

We will have a FULL lot of vendors this week; 2 food trucks, produce, baked goods, locally grown flower bouquets, handmade artisan crafts, local authors & MORE!!

Start your Saturday at the market! Take home some locally grown produce, discover many amazing local vendors and give generously as we continue to collect money for the Washington County k9 unit!!

See YOU at the market!

Like us on Facebook @Lake Elmo Farmers Market and watch for updates!

*Business and Community Working Together/ Lake Elmo Farmer's Market is a 501c3*

### Sally Manzara Interpretive Nature Center Update

## SALLY MANZARA INTERPRETIVE NATURE CENTER RE-OPENED

The nature center, in Sunfish Lake Park, is now open:

9 AM to 4 PM Monday - Tuesday - Thursday -  
Friday - Saturday



Please come visit, see in and our updated exhibits,  
have a cup of coffee!

Outdoor features can be enjoyed during Park hours  
6 AM to 9 PM

Kite Flying Days are coming to Sunfish Lake Park at the Sally Manzara Interpretive Nature Center. The first two scheduled are August 6<sup>th</sup> at 11 AM and August 7<sup>th</sup> at Noon, weather permitting. Come and learn to make a kite and fly it, or bring your own. This event is planned as a monthly activity.

Come see the indoor observation beehive, where you can watch the worker bees bring in pollen and nectar to feed the larvae, and the queen bee laying eggs. The nature center is open (except Sundays) every morning and most afternoons. Please visit [www.sminc-lake-elmo.org](http://www.sminc-lake-elmo.org) for an up-to-date schedule.

The Annual Sunfish Lake Park Family Nature Day took place on July 10th, with 75 kids receiving gift bags and an estimated 175 total attendance. Thanks to all the volunteers who made it happen.

Visit our website for details: [www.sminc-lake-elmo.org](http://www.sminc-lake-elmo.org)



## Well sampling in the east metro area

If you live in the area that is a priority for testing, you can request that your private well water be tested.

- To see if you live in the priority sampling area, use the [interactive map](#).
- If you live in the priority sampling area, you can request to have your well tested by filling out and [submitting this online form](#).

More information about the priority testing area is available on the [Well sampling in the East Metro Area webpage](#).

## Water Conservation Rebate Program

The City of Lake Elmo, in partnership with the Metropolitan Council, is offering a rebate program for purchases of eligible WaterSense toilets and Smart Irrigation Controllers. Qualifying purchases are eligible for up to a \$200 credit on your water bill.



[Program Details Available Here](#)



### **Water Wisely: Start in your own backyard**

Water is a precious resource needed by all living things. If you care for a yard or garden, you can help protect water resources by being wise about watering practices, starting in your own backyard.

Much of our treated drinking water is also used for landscape irrigation, so it pays to reduce water use and protect our supply by being wise about landscape watering practices at home.

Although all plants need water to be healthy and grow, some—like lawns—actually need less water than we think. While others—like trees—need more. Knowing the what, when, where and how of watering in your garden or landscape is key to growing healthy plants and conserving our precious water supply.

See the University of Minnesota's "Watering Wisely" tips [here](#).





### **New Lake Elmo Library Hours**

Lake Elmo Library is returning to pre-pandemic hours beginning June 1! Stop by the library to check out books, use a computer, reserve a meeting room, and participate in a variety of summer programs.

Library Hours:

Monday and Friday: 10 a.m.-4 p.m.

Tuesday, Wednesday, and Thursday: 12-8 p.m.

Saturday: 10 a.m.-2 p.m.

Sunday: Closed

Learn more about current library services at [WashCoLib.org/Covid19](https://WashCoLib.org/Covid19)

### **Summer Reading at your Library**

Summer Reading programs for kids, teens, and adults run from June 1-August 31.

To get started, stop by any WashCoLib branch to pick up a game card with activities to complete over the summer. You can also download game cards on the library's website or complete the program entirely online. When you're finished, drop your game card off to get a reward and enter our drawings for a prize. Learn more at [WashCoLib.org](https://WashCoLib.org)

Washington County Library Events

### **Public Facilities Project Update**

Regular updates and documents are available [here](#).



- 1 New City Hall Entrance
- 2 New Fire Station Expansion
- 3 Council Chambers/Community room addition
- 4 Parking
- 5 Fire Department Parking
- 6 City Hall/Sheriff
- 7 Laverne Avenue

## CITY OF LAKE ELMO COMBINED CITY HALL & PUBLIC SAFETY FACILITY

The new Lake Elmo City Hall / Public Safety Facility combines City Hall staff and functions, the entire Fire Department, and a satellite office for the Washington County Sheriff's department. This co-location involves renovating and expanding the City-owned Brookfield Office building to concentrate civic resources into a single structure at the historic core of the city. In addition, the Public Works facility will also be expanded to accommodate City growth and expanded service needs.



**TOTAL ANTICIPATED PROJECT COST:** \$14,600,000  
**DESIGN COMPLETION:** Late summer 2021  
**CONSTRUCTION COMPLETION:** Fall of 2022





**MEETING THE DEMANDS OF AN EVOLVING FIRE SERVICE**

Lake Elmo currently has two fire stations, Fire Station #1 at 3510 Laverne Ave. N. and Fire Station #2 at 4259 Jamaica Ave. N. This project will consolidate these two stations into a single, state-of-the-art station that will meet the needs of our community and firefighters today and into the future. The building is designed to accommodate increasing call volumes, meet the demands for training and to support our evolving role as all hazard responders.

Due to the changing environment of fire department staffing needs and the impacts of that in relation to incident response times and budget responsibility, the fire department is consolidating to a single station which will allow the department the ability to transition to a staffing model that provides 24/7 coverage from the single station. This change requires the updated facilities like staff dorm rooms, day room and kitchen area, fitness room, staff workspaces and offices.

Educational materials provided by the City of Lake Elmo

For more information, visit our website: [www.lakeelmo.org](http://www.lakeelmo.org) or contact Kristina Handt, Administrator at [KHandt@lakeelmo.org](mailto:KHandt@lakeelmo.org)



The current fire stations are too small to accommodate modern apparatus and equipment and cannot provide adequate health protections for our firefighters.

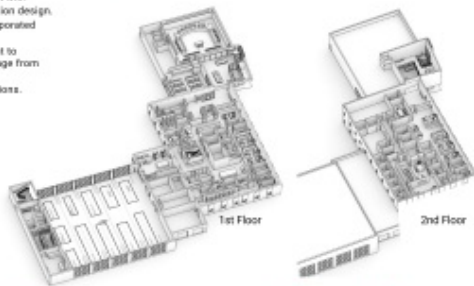
**A FUNCTIONAL FIRE STATION**

A new, single, state-of-the-art station will meet the needs of our community and firefighters today and into the future. Designed to accommodate our evolving role as all-hazard responders it will:

- Modernize our facilities following best practices in station design.
- Enhance firefighter training with training features incorporated into the building.
- The addition of living quarters will allow the department to transition to a staffing model that provides 24/7 coverage from the single station.
- Improve response times and overall department operations.

**DESIGNED FOR FIREFIGHTER HEALTH AND SAFETY**

- Distinct spaces to properly decontaminate gear and equipment. Focus to reduce staff exposure to firefighting carcinogens and other toxic materials.
- Properly ventilate the apparatus bay to reduce staff exposure to diesel exhaust and other harmful fumes.
- Space that supports the physical and mental health of staff.
- Clear separation between public and private spaces.



Lake Elmo City Hall, built in 1986, is a very small 2,806 SF. There are insufficient offices for all staff members and the restrooms are not accessible. The council chambers are small, do not provide sufficient space for department heads or members of the public, and lack modern technological updates. City staff have long outgrown this building and have since moved into the Brookfield Building located across the parking lot.

The Brookfield Building was purchased by the City in 2018 as a method of maintaining city functions next to the outgrown City Hall at a lower cost alternative to new construction. It was constructed in 1980 and will require a major overhaul to increase its useful life.

**AN EXPANDED AND IMPROVED CITY HALL**

- Improved service accessibility
- Community room available for public use
- New council chambers with updated technology
- Additional conference rooms
- Co-locate Washington County Sheriff staff
- Office space for growth of city staff
- Accessible restrooms.

