



fresh

Your Weekly Source for City News and Information

Permanent Water Restrictions Amendment

At the regular City Council meeting on Tuesday, July 20th the City Council adopted Ordinance No 08-245 which amends the hours watering is prohibited to 5am-6pm. Odd/Even Watering restrictions are still in place.

Public Meetings Next Week

- Planning Commission Meeting Monday, July 26 - 7:00PM

[City Agendas and Minutes](#)



Visit our website



Tuesday, July 20 City Council Meeting Summary

At their regular meeting on Tuesday, July 20, 2021 the Lake Elmo City Council:

- Approved the Accessory Structures (Shoreland District) Zoning Text Amendment
- Approved the Reconfiguration of Walking Trails and Installation of Exit and Entrance Trails for Mountain Bikes in Sunfish Lake Park
- Approved the Site Improvement Agreement for Crossroads East PUD
- Approved the Tree Preservation Ordinance Update
- Approved the Permanent Water Use Restrictions Update

On the consent agenda the Council:

- Approved Payments and Disbursements
- Accepted the June 2021 Building Department Report
- Accepted the June 2021 Public Works Department Report
- Accepted the June 2021 Fire Department Report
- Accepted the June 2021 Sheriff's Office Report
- Approved Purchase of PID 13.029.21.32.0086
- Approved Sale of Excess Equipment
- Accepted 2nd Quarter Financials
- Approved MOU with Valley Branch Watershed District for Installation of Ground Water Monitoring Wells on City Property
- Authorized Posting of City Planner Position
- Approved 2021 Recycling Grant Agreement
- Approved Transfer of Fund Balance to Close Old Village Fund – Resolution 2021-079
- Approved Special Event Permit and Temporary Liquor License for Lake Elmo Jaycees Huff N Puff Days
- Authorized Installation of Ethernet Network Services at Public Works
- Approved Pay Request No. 2 for the 2021 Mill and Overlay Project
- Approved Change Order No. 1 for Old Village Phase 5 and 6 Street and Utility Improvements
- Approved Pay Request No. 3 for Heritage Farms Street and Utility Improvements
- Approved Pay Request No. 3 for Hamlet on Sunfish Lake Street and Utility Improvements
- Authorized Feasibility Report, and Plans and Specifications for the Parkview Estates-Cardinal Ridge/View Street and Utility Improvements – Resolution 2021-080

Monday, July 26 Planning Commission Meeting Agenda

NOTICE OF MEETING

The City of Lake Elmo
Planning Commission will conduct a meeting on
Monday July 26, 2021
at 7:00 p.m.

AGENDA

1. Pledge of Allegiance
2. Approve Agenda
3. Approve Minutes
 - a. June 28, 2021
4. Public Hearings
 - a. Variances and Lot Division – 3100 Lake Elmo Avenue (Dorschner)
 - b. Zoning Code Text Amendment – Setback Requirements in the Agricultural (A) Zoning District
5. New/Unfinished Business
 - a. None
6. Communications/Updates
 - a. City Council Update
 - 07-06 2021 Meeting – Planning Commission Appointment – Micah Vrieze
 - 07-20-2021 Meeting – Zoning Code Text Amendment (Accessory Structures in Shoreland District), Tree Preservation Ordinance Amendment
 - b. Staff Updates
 - c. Upcoming PC Meetings:
 1. August 9, 2021
 2. August 23, 2021
7. Adjourn

***Note: Every effort will be made to accommodate person or persons that need special considerations to attend this meeting due to a health condition or disability. Please contact the Lake Elmo City Clerk if you are in need of special accommodations.

Meeting Materials Can Be Accessed Here

City of Lake Elmo NIGHT OUT

AUGUST 3rd, 2021
6-8PM, LION'S PARK



Thank you to all the participating businesses and organizations!

FOOD TRUCK

W E D N E S D A Y S



11AM-3PM

JUNE 2, 16 & 30

JULY 14 & 28

AUGUST 11 & 25

4PM-8PM

JUNE 9 & 23

JULY 7 & 21

AUGUST 4 & 18



ARBOR GLEN SENIOR LIVING
11020 39TH ST N
LAKE ELMO, MN 55042

VISIT ARBOR GLEN OR THE FIELDS
ON FACEBOOK TO DISCOVER THE
FOOD TRUCK(S) OF THE WEEK!

OR CALL US AT 651-704-1444

WWW.ARBORSENIOR.COM WWW.FIELDSATARBORGLEN.COM



Are There Forever Chemicals In Your Water Well?

A research team from Indiana University and RTI International, a nonprofit research institute, is seeking help from citizen scientists in Washington County for its study of a group of chemicals known as PFAS, or 'forever chemicals' in private wells.



FOOD TRUCK FRIDAY!

COMMUNITY EVENT
Fridays from 4:30 - 7:00 pm



Mahtomedi District Education Center

1520 Mahtomedi Ave, Mahtomedi

- April 16 iPierogi + Xssant
- May 21 El Pariente + D and D Goodies Asian flair + KP Concessions Mini Donuts
- June 18 Up in Smoke + KEO's Shave Ice
- July 23 Pig Approved BBQ + Maui Wowie
- August 13 The Big Cheese + Cookies & Cream Scoop Shop

*Yard Games! Outdoor seating only.
Bring a lawn chair or blanket.
Rain or Shine.*

White Bear Area Senior Center

2484 E County Rd F, WBL

- April 23 iPierogi + Droolin' Moose
- May 14 Pig Approved BBQ + Cookies & Cream Scoop Shop
- June 25 KCM Egg Rolls
- July 16 Up in Smoke + KEO's Shave Ice
- August 20 The Big Cheese + Maui Wowie

*Indoor/Outdoor seating.
Or bring a lawn chair.
Rain or Shine*



Grab & Go or Stay & Eat!

A portion of proceeds are donated back to:
White Bear Lake / Support Senior Programs
Mahtomedi / Support Community Ed Scholarships

Small-scale Construction

Prevent erosion and protect Minnesota's water during construction, remodeling and landscaping projects.

Bare soil can erode easily during construction and landscaping projects. Though soil is natural, it can pollute lakes, rivers and streams by smothering habitat and making the water cloudy and unsafe for swimming.



Stormwater Pollution Prevention

Building a new home?

Refer to the diagram on the back of this page for guidance on preventing erosion and stormwater pollution.

When construction is in progress, verify that your builder has installed silt fence or other sediment control measures along the down slope perimeter of your property and near curbs, gutters, ditches, streams, lakes and wetlands. All bare soil must be covered and soil piles must be stabilized as well.

As a homeowner, you are responsible for inspecting and maintaining temporary stabilization measures until permanent ground cover is established on your yard. Reinstall or replace ripped, collapsed, or decomposed silt fence and remove sediment if deposits reach 1/3 of the silt fence height. Use downspout extenders to protect temporarily stabilized areas from roof runoff until permanent vegetation is established.

Establishing a new lawn?

Cover bare soil with erosion control fabric, mulch, or quick-growing annual grasses such as annual rye, oats or winter wheat until you are able to lay sod or seed your lawn. Erosion control fabric can also help to protect hilly areas until new grass is fully established.

Beginning a landscaping project?

Schedule large landscaping projects for dry weather. Cover bare soil with mulch and avoid disturbing the soil along stream banks and lakeshores. Study how water flows across your property and use trees, shrubs, deep-rooted native plants, and raingardens to slow down runoff and prevent erosion.

We need your help to keep our waters clean!

Learn more about Minnesota water at www.pca.state.mn.us/water/construction-stormwater

Association of State and Territorial Dental Directors
Centers for Disease Control and Prevention
American Dental Association

CERTIFICATE OF APPRECIATION

50 Year Award, 1970 – 2020

Lake Elmo

for contributions made on behalf of community water fluoridation



June 21, 2021

Lake Elmo City Council
Lake Elmo City Hall
c/o Ms. Kristina Handt
3880 Laverne Avenue, Suite 100
Lake Elmo, MN 55042

Dear Lake Elmo City Council,

Congratulations! The Minnesota Department of Health (MDH) Oral Health Program and Drinking Water Protection Section are pleased to present the city of Lake Elmo with the American Dental Association (ADA), Association of State and Territorial Dental Directors (ASTDD), and Centers for Disease Control and Prevention (CDC) **2020 Community Water Fluoridation 50 Year Award**. This award is given jointly to recognize public water systems that have consistently adjusted the fluoride concentration in drinking water for the past 50 years.

Because of your efforts and continued support from generations of dental professionals and other health care providers, health care and public health organizations, community leaders, water professionals, and untold others, the prevention of tooth decay through community water fluoridation is recognized by the CDC as one of 10 great achievements in public health of the 20th century. We hope that this award will provide you with an opportunity to highlight your excellent work.

Congratulations on this outstanding achievement and thank you for providing safe, dependable drinking water for your community. If you have any questions about the award, please contact either David Rindal, MDH Drinking Water Protection, at (651) 201-4660 and (david.rindal@state.mn.us), or Muneera Hassan, MDH Oral Health Program, at (651) 201-5424 and (muneera.hassan@state.mn.us).

Sincerely,



Prasida Khanal, MPH BDS
Director | Oral Health Program
MN Department of Health
(651) 201-3538



Sandeep Burman, PG.
Manager | Drinking Water Protection
MN Department of Health
(651) 201-4647



Carmelo Cinqueonce, MBA
Executive Director
MN Dental Association
(651) 767-8400

An equal opportunity employer.

Since the start of 2020 we've applied rebates for 80 smart irrigation controllers and efficient toilets, totaling over \$10,000 in credits to water bills. These efficient devices are expected to save over 749,000 gallons of water per year!

Program information and rebate forms are available here:
<http://www.lakeelmo.org/residents/water.php>

How much water can we save each year?

The smart irrigation controllers and efficient toilets installed through the City of Lake Elmo Water Rebate Program are estimated to save over 749,000 gallons of water per year!

That's enough to fill -

Lake Elmo Fire Tender 1
374 times



Como Harbor 3 times



10 Steps to Stormwater Pollution Prevention on Small Residential Construction Sites

Note: this graphic does not address post-construction stormwater treatment permit requirements.

1 Protect Any Areas Reserved for Vegetation or Infiltration and Preserve Existing Trees

If you will be installing infiltration-based features such as rain gardens or bioswales, make sure these areas are designated as off limits to avoid compaction.

Save time and money by preserving existing mature trees during construction. Preserving mature trees minimizes the amount of soil that needs to be stabilized once construction is complete, and minimizes the amount of runoff during and after construction activity.

2 Stockpile Your Soil

MPCA's CCP requires operators to preserve native topsoil on site unless infeasible and protect all soil storage piles from run-on and runoff. For smaller stockpiles, covering the entire pile with a tarp may be sufficient.

3 Protect Construction Materials from Run-On and Runoff

At the end of every workday and during precipitation events, provide cover for materials that could leach pollutants.

4 Designate Waste Disposal Areas

Clearly identify separate waste disposal areas on site for hazardous waste, construction waste, and domestic waste by designating with signage, and protect from run-on and runoff.

5 Install Perimeter Controls on Downhill Let Line

Install perimeter controls such as sediment filter logs or silt fences around the downhill boundaries of your site. Make sure to remove accumulated sediment whenever it has reached halfway up the control.

6 Install Inlet Controls

Sediment control logs, gravel barriers, and sand or rock bags are options for effective inlet controls. Make sure to remove accumulated sediment whenever it has reached halfway up the control.

7 Install a Concrete/Stucco Washout Basin

Designate a leak-proof basin lined with plastic for washing out used concrete and stucco containers. Never wash excess stucco or concrete residue down a storm drain or into a stream!

8 Maintain a Stabilized Exit Pad

Minimize sediment track out from vehicles exiting your site by maintaining an exit pad made of crushed rock spread over geotextile fabric, a shaker rack, or a wash rack at the construction site exit. If sediment track-out occurs, remove deposited sediment within 24 hours of discovery.

9 Keep an Up-to-Date Copy of Your SWPPP on Site

Keep a copy of your complete and up-to-date SWPPP, including site maps showing where each BMP is or will be installed, and records of the site inspections completed by a trained inspector on site and easily accessible.

10 Site Stabilization

Immediately stabilize exposed portions of the site whenever construction work will stop for 14 or more days, even if work is only temporarily stopped. Remember, final stabilization is required prior to terminating permit coverage.

Keep in mind that temporary or permanent stabilization must be completed within 7 days if your project is within 1 mile of a special or impaired water.

Small-scale Construction Considerations

Thanks for doing your part to protect Minnesota water!

www.pca.state.mn.us/water/construction-stormwater

For more information, contact
your city or watershed
management organization.

Metropolitan Mosquito Control District trucks, helicopters, and staff will be out in neighborhoods and parks this summer working to reduce mosquito-borne disease



and annoyance.

Summer weather in Minnesota means we are starting to see an increase in mosquitoes and the Metropolitan Mosquito Control District (MMCD) will be out conducting surveillance and treatment activities to reduce the risk of disease and annoyance in an environmentally-sensitive manner.

Each year the field staff at MMCD monitors and treats wetlands that breed mosquitoes with a fleet of trucks and helicopters. With many people still working from home during the weekday due to the COVID-19 pandemic, more people may notice MMCD activities in local neighborhoods and parks. At times MMCD employees may need to cross private property for access to check and treat areas for mosquito larvae. MMCD management asks the community to please stay several feet away from field staff and ensure children and pets are kept at a distance. If you have questions about mosquito control activities or concerns about an employee, please call the MMCD front desk at (651) 645-9149 or visit MMCD.org.



New Interactive Parks and Trails Map

In 2021 the City introduced a new Interactive Parks and Trails Map showcasing City Parks, Trailheads, and Trail maps. Check it out [here!](#)



The City of Lake Elmo is Accepting Applications for the Following Positions:

- Building Official
- Paid on Call Firefighters

[Visit our website](#)

Washington County Sheriff Department

If you are planning on being away from home or on vacation please follow some of the tips below to increase the safety and security of your property.

1. Lock all of the doors and windows.
2. Clear out the mailbox and notify the post office to hold your mail until you return. If you are having packages delivered be sure to use the package tracking options and arrange for the package to be picked up by a friend or family member.
3. Keep the yard and/or driveway maintained. Removal of snow from the driveway and walking paths is important.
4. Hide or secure your valuables from view of windows. Using safes is helpful in securing important items.
5. Don't broadcast your plans of being gone on social media. Only notify those who will be helping you in keeping an eye on your residence like a neighbor, family or friends.
6. Get your security system updated, tested and notified of your vacancy. Posting security signage in your yard on residence can help with deterrence of theft and burglary. Many door camera systems can be purchased at a reasonable price with instant notification of activity at your residence while you are away.
7. Adjust your heating settings especially as temperatures can drop significantly this time of year to avoid frozen water lines.
8. Security lighting and timers. The proper lighting on your residence can help to deter theft.
9. Request vacation checks through the Sheriff's Office while you are out of town.

These are just a few quick steps you can take to increase the security of your home while you are away. If you are interested in receiving information on vacation checks call our non-emergency number 651-439-9381



HIGHWAY 36 AND MANNING AVENUE INTERCHANGE PROJECT

Washington
County

New Construction Update Available

Follow the link below to see the latest Construction Update:

[Construction Update: June 14, 2021](#)

To learn more about the project, visit the project website at:

www.co.washington.mn.us/Manning36Interchange

County Highway 13 (Ideal Avenue) Phase II

Washington County in partnership with the City of

Lake Elmo are providing an online project update on the proposed improvements to Ideal Avenue between County Highway 14 and 44th Street. The project website provides program information and updates.

[Project Website](#)



**ADOPT
A STORM
DRAIN**



Storm drains in our city help to protect neighborhoods from flooding, but they also carry litter and polluted runoff from streets and parking lots into nearby lakes and streams.

You can make a difference by volunteering just 15-minutes, twice a month, to keep their nearest storm drain clear of litter, leaves, grass clippings and dirt. To sign up: go to www.Adopt-a-Drain.org and use the map to find your neighborhood storm drains – then click and sign-up to adopt.

Xcel Energy Consumer Update

Xcel Energy residential electric customers who have between \$1,000 to \$4,000 in past due charges are eligible for the Payment Plan Credit Program, which could forgive up to 75% of their past-due balance if they enroll and stay current in a payment plan. Customers can enroll in other payment plans we offer through the My Account feature at www.XcelEnergy.com, or contact customer care at 1-800-895-4999



Sally Manzara Interpretive Nature Center Update

**SALLY MANZARA INTERPRETIVE NATURE
CENTER RE-OPENED**

The nature center, in Sunfish Lake Park, is now open:

9 AM to 4 PM Monday - Tuesday - Thursday -
Friday - Saturday

Please come visit, see in and our updated exhibits,
have a cup of coffee!

Outdoor features can be enjoyed during Park hours
6 AM to 9 PM

Story Stroll presented by Washington County Library
"Dog's Colorful Day"

Emy's Guide to the Animals of Sunfish Lake Park
Rain Garden, Prairie Plant Specimens, Monarch
WayStation, play area

FAMILY NATURE DAY returns, Saturday JULY 10th
9 AM to Noon

Visit our website for details: www.sminc-lake-elmo.org



Well sampling in the east metro area

If you live in the area that is a priority for testing, you can request that your private well water be tested.

- To see if you live in the priority sampling area, use the [interactive map](#).
- If you live in the priority sampling area, you can request to have your well tested by filling out and [submitting this online form](#).

More information about the priority testing area is available on the [Well sampling in the East Metro Area webpage](#).

Water Conservation Rebate Program

The City of Lake Elmo, in partnership with the Metropolitan Council, is offering a rebate program for purchases of eligible WaterSense toilets and Smart Irrigation Controllers. Qualifying purchases are eligible for up to a \$200 credit on your water bill.



[Program Details Available Here](#)



Water Wisely: Start in your own backyard

Water is a precious resource needed by all living things. If you care for a yard or garden, you can help protect water resources by being wise about watering practices, starting in your own backyard.

Much of our treated drinking water is also used for landscape irrigation, so it pays to reduce water use and protect our supply by being wise about landscape watering practices at home.

Although all plants need water to be healthy and grow, some—like lawns—actually need less water than we think. While others—like trees—need more. Knowing the what, when, where and how of watering in your garden or landscape is key to growing healthy plants and conserving our precious water supply.

See the University of Minnesota's "Watering Wisely" tips [here](#).



LAKE ELMO FARMER'S MARKET

A 501/C/3 NON-PROFIT

We will open June 19 Saturday 9am to 1pm to Sept 4th

We are located at LE Elementary School

**Please note Date was wrong on last week's issues of
Fresh.**

**Please note our last day of the Market. Please accept
our apologies.**

Thank you

Our Market is Full and we have a great selection.

Visit us at our "Lake Elmo Farmer's Market" Facebook site.

Like us on Facebook "Lake Elmo Farmers Market" and watch for updates!



Lake Elmo Farmer's Market will be starting a Fundraiser for the Washington Co. Sheriff's Department Canine Unit.

Lake Elmo Farmer's Market will match donations up to \$1,000.00!!

Please come to the Farmer's Market and give generously.

Market opens June 19th every Saturday 9-1 to September 4th.

See you at the Market!

Business and Community working together/ Lake Elmo Farmer's Market is a 501c3



New Lake Elmo Library Hours

Lake Elmo Library is returning to pre-pandemic hours beginning June 1! Stop by the library to check out books, use a computer, reserve a meeting room, and participate in a variety of summer programs.

Library Hours:

Monday and Friday: 10 a.m.-4 p.m.

Tuesday, Wednesday, and Thursday: 12-8 p.m.

Saturday: 10 a.m.-2 p.m.

Sunday: Closed

Learn more about current library services at WashCoLib.org/Covid19

Summer Reading at your Library

Summer Reading programs for kids, teens, and adults run from June 1-August 31.

To get started, stop by any WashCoLib branch to pick up a game card with activities to complete over the summer. You can also download game cards on the library's website or complete the program entirely online. When you're finished, drop your game card off to get a reward and enter our drawings for a prize. Learn more at WashCoLib.org

Washington County Library Events

Public Facilities Project Update

Regular updates and documents are available [here](#).



- 1 New City Hall Entrance
- 2 New Fire Station Expansion
- 3 Council Chambers/Community room addition
- 4 Parking
- 5 Fire Department Parking
- 6 City Hall/Sheriff
- 7 Laverne Avenue

LEO A DALY

CITY OF LAKE ELMO COMBINED CITY HALL & PUBLIC SAFETY FACILITY

The new Lake Elmo City Hall / Public Safety Facility combines City Hall staff and functions, the entire Fire Department, and a satellite office for the Washington County Sheriff's department. This co-location involves renovating and expanding the City-owned Brookfield Office building to concentrate civic resources into a single structure at the historic core of the city. In addition, the Public Works facility will also be expanded to accommodate City growth and expanded service needs.



TOTAL ANTICIPATED PROJECT COST: \$14,600,000
DESIGN COMPLETION: Late summer 2021
CONSTRUCTION COMPLETION: Fall of 2022





MEETING THE DEMANDS OF AN EVOLVING FIRE SERVICE

Lake Elmo currently has two fire stations, Fire Station #1 at 3510 Laverne Ave. N. and Fire Station #2 at 4259 Jamaica Ave. N. This project will consolidate these two stations into a single, state-of-the-art station that will meet the needs of our community and firefighters today and into the future. The building is designed to accommodate increasing call volumes, meet the demands for training and to support our evolving role as all hazard responders.

Due to the changing environment of fire department staffing needs and the impacts of that in relation to incident response times and budget responsibility, the fire department is consolidating to a single station which will allow the department the ability to transition to a staffing model that provides 24/7 coverage from the single station. This change requires the updated facilities like staff dorm rooms, day room and kitchen area, fitness room, staff workspaces and offices.

Educational materials provided by the City of Lake Elmo
 For more information, visit our website: www.lakeelmo.org or contact Kristina Handt, Administrator at KHandt@lakeelmo.org



The current fire stations are too small to accommodate modern apparatus and equipment and cannot provide adequate health protections for our firefighters.

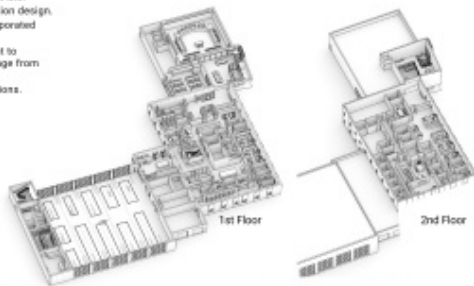
A FUNCTIONAL FIRE STATION

A new, single, state-of-the-art station will meet the needs of our community and firefighters today and into the future. Designed to accommodate our evolving role as all-hazard responders it will:

- Modernize our facilities following best practices in station design.
- Enhance firefighter training with training features incorporated into the building.
- The addition of living quarters will allow the department to transition to a staffing model that provides 24/7 coverage from the single station.
- Improve response times and overall department operations.

DESIGNED FOR FIREFIGHTER HEALTH AND SAFETY

- Distinct spaces to properly decontaminate gear and equipment. Focus to reduce staff exposure to firefighting carcinogens and other toxic materials.
- Properly ventilate the apparatus bay to reduce staff exposure to diesel exhaust and other harmful fumes.
- Space that supports the physical and mental health of staff.
- Clear separation between public and private spaces.



Lake Elmo City Hall, built in 1986, is a very small 2,806 SF. There are insufficient offices for all staff members and the restrooms are not accessible. The council chambers are small, do not provide sufficient space for department heads or members of the public, and lack modern technological updates. City staff have long outgrown this building and have since moved into the Brookfield Building located across the parking lot.



The Brookfield Building was purchased by the City in 2018 as a method of maintaining city functions next to the outgrown City Hall at a lower cost alternative to new construction. It was constructed in 1980 and will require a major overhaul to increase its useful life.

AN EXPANDED AND IMPROVED CITY HALL

- Improved service accessibility
- Community room available for public use
- New council chambers with updated technology
- Additional conference rooms
- Co-locate Washington County Sheriff staff
- Office space for growth of city staff
- Accessible restrooms.

