

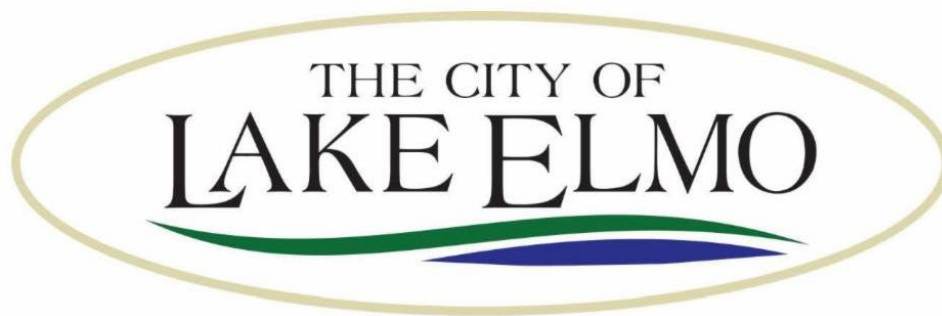
July 9, 2021



fresh

Your Weekly Source for City News and Information

Limited Watering Allowed Under Outdoor Watering Ban



Limited Watering Allowed Under Emergency Outdoor Water Ban

Effective at 7PM on Tuesday, June 22nd until further notice, the Emergency Outdoor Watering Ban will be modified to allow outdoor watering (lawn irrigation and vehicle washing) following the odd/even watering restrictions between the hours of **7PM to 5AM**. Property owners having even numbered postal addresses may water, sprinkle or irrigate their lawns only on even numbered days. Property owners having odd numbered postal addresses may water, sprinkle, or irrigate their lawns only on odd numbered days. Property owners with private wells are exempt from this ban.

Hand held watering of flowers, gardens and landscaping is permitted. Pool filling (both wading and swimming pools) is permitted, water toys/water sprinklers for children actively playing are permitted.

No new waivers for sod watering will be issued by the City until the watering ban is lifted. Failure to comply with these restrictions shall result in a \$100 surcharge for water service for each violation. Continued violations may result in the disconnection of water service.

Public Meetings Next Week

- City Council Workshop Tuesday, July 13th 6:30PM
- Planning Commission Monday, July 12th - Cancelled



[City Agendas and Minutes](#)

Visit our website

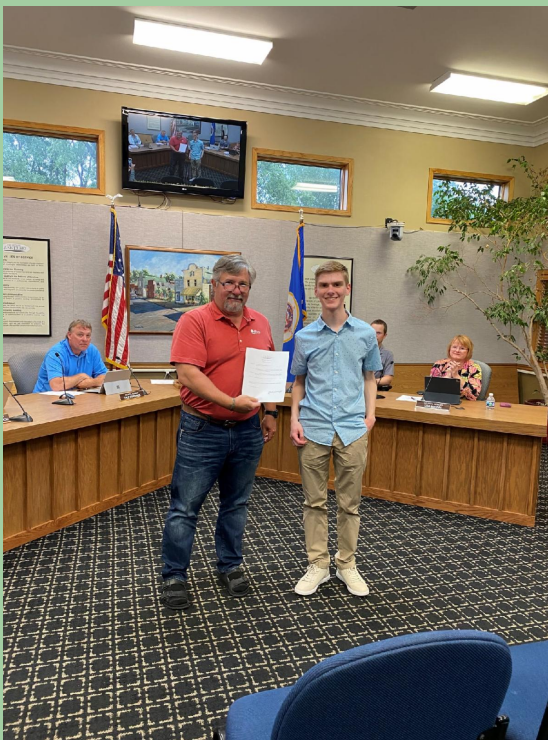
Tuesday, July 6th City Council Meeting Summary

At their regular meeting on Tuesday, July 6th, 2021 the Lake Elmo City Council:

- Received a Petition and Authorized a Feasibility Report, Topographic Survey, and Final Design for the Tapestry Sanitary Sewer Improvements
- Directed staff to continue working on the redesign for the Old Village Phase 5 and 6 Street Drainage and Utility Improvements
- Appointed Micah Vrieze to the Planning Commission
- Appointed Tom Triplett to the Economic Development Authority

On the consent agenda the Council:

- Approved Payment of Disbursements
- Accepted May 2021 Sheriff's Office Report
- Approved Donation to the Fire Department from Centerpoint Energy
- Approved Donation to the Fire Department from Emily & Andrew Gilbertson
- Approved Lake Elmo Lake Association Grant
- Approved Resolution Accepting American Rescue Plan Act (ARPA) Funds
- Approved Massage Therapy Premises Permit for Emerald Bodywork by Leah
- Approved Water Tower Option Agreement
- Approved Updated Job Description and Posting for Fire Department Captain
- Approved Updated Job Description and Posting for Fire Department Lieutenant
- Approved Release of Warranty Security for Boulder Ponds 2nd Addition
- Accepted Improvements and Approve Security Reduction for Wildflower 3rd Addition
- Accepted Quotes and Award Contract for the 2021 Crack Seal Project
- Accepted Quotes and Award Contract for the 2021 Seal Coat Project
- Authorized Plans and Specifications for Water Tower No. 3 and Trunk Watermain Extension
- Authorized Feasibility Report, Topographic Survey and Final Design for the Torre Pines Street and Utility Improvements
- Authorized Feasibility Report, Topographic Survey and Final Design for the Whistling Valley Street and Utility Improvements
- Approved Statewide Health Improvement Partnership (SHIP) Grant Request
- Approved Easton Village 7th Addition Development Agreement
- Approved Final Plat Extension for Royal Golf 3rd Addition
- Approved Royal Golf 3rd Addition Development Agreement
- Approved 2nd Amendment to Royal Golf 1st Addition Development Agreement and 1st Amendment to Royal Golf



At the City Council Meeting, Mayor Cadenhead recognized Evan Erickson. Evan is a Lake Elmo resident who will be representing the United States in the International Physics Olympiad later this month!

Tuesday, July 13th City Council Workshop Agenda



Our Mission is to Provide Quality Public Services in a Fiscally Responsible Manner While Preserving the City's Open Space Character

NOTICE OF MEETING

City Council Workshop
3800 Laverne Avenue North
July 13, 2021
6:30 PM

AGENDA

- | | |
|---|---------|
| I. Call to Order | 6:30 PM |
| II. Hwy 36 Transit Project Update | 6:30 PM |
| III. Setback for Agricultural Buildings | 7:00 PM |
| IV. No Boat Trailer Parking on Olson Lake Trail | 7:30 PM |
| V. Items for Future Work Session Agenda | 8:00 PM |
| A. Schiltgen West (Gonyea) Concept Plan | |
| B. 5th St Medians | |
| C. Conceptual Drinking Water Plan (3M State Settlement) | |
| VI. Adjourn | 8:00 PM |

Meeting Materials Can Be Accessed Here

FOOD TRUCK

WEDNESDAYS



11AM-3PM

JUNE 2, 16 & 30

JULY 14 & 28

AUGUST 11 & 25

4PM-8PM

JUNE 9 & 23

JULY 7 & 21

AUGUST 4 & 18



ARBOR GLEN SENIOR LIVING
11020 39TH ST N
LAKE ELMO, MN 55042

VISIT ARBOR GLEN OR THE FIELDS
ON FACEBOOK TO DISCOVER THE
FOOD TRUCK(S) OF THE WEEK!

OR CALL US AT 651-704-1444

WWW.ARBORSENIOR.COM WWW.FIELDSATARBORGLEN.COM



Arbor Glen
Senior Living

Independent Living · Assisted Living · Memory Care



The Fields
at Arbor Glen

Independent Living Apartments & Townhomes

 **EBENEZER**



FOOD TRUCK FRIDAY!

COMMUNITY EVENT
Fridays from 4:30 - 7:00 pm



Mahtomedi District Education Center

1520 Mahtomedi Ave, Mahtomedi

- April 16 iPierogi + Xssant
- May 21 El Pariente + D and D Goodies Asian flair + KP Concessions Mini Donuts
- June 18 Up in Smoke + KEO's Shave Ice
- July 23 Pig Approved BBQ + Maui Wowie
- August 13 The Big Cheese + Cookies & Cream Scoop Shop

*Yard Games! Outdoor seating only.
Bring a lawn chair or blanket.
Rain or Shine.*

White Bear Area Senior Center

2484 E County Rd F, WBL

- April 23 iPierogi + Droolin' Moose
- May 14 Pig Approved BBQ + Cookies & Cream Scoop Shop
- June 25 KCM Egg Rolls
- July 16 Up in Smoke + KEO's Shave Ice
- August 20 The Big Cheese + Maui Wowie

*Indoor/Outdoor seating.
Or bring a lawn chair.
Rain or Shine*



Grab & Go or Stay & Eat!

A portion of proceeds are donated back to:
White Bear Lake / Support Senior Programs
Mahtomedi / Support Community Ed Scholarships

Small-scale Construction

Prevent erosion and protect Minnesota's water during construction, remodeling and landscaping projects.

Bare soil can erode easily during construction and landscaping projects. Though soil is natural, it can pollute lakes, rivers and streams by smothering habitat and making the water cloudy and unsafe for swimming.



Stormwater Pollution Prevention

Building a new home?

Refer to the diagram on the back of this page for guidance on preventing erosion and stormwater pollution.

When construction is in progress, verify that your builder has installed silt fence or other sediment control measures along the down slope perimeter of your property and near curbs, gutters, ditches, streams, lakes and wetlands. All bare soil must be covered and soil piles must be stabilized as well.

As a homeowner, you are responsible for inspecting and maintaining temporary stabilization measures until permanent ground cover is established on your yard. Reinstall or replace ripped, collapsed, or decomposed silt fence and remove sediment if deposits reach 1/3 of the silt fence height. Use downspout extenders to protect temporarily stabilized areas from roof runoff until permanent vegetation is established.

Establishing a new lawn?

Cover bare soil with erosion control fabric, mulch, or quick-growing annual grasses such as annual rye, oats or winter wheat until you are able to lay sod or seed your lawn. Erosion control fabric can also help to protect hilly areas until new grass is fully established.

Beginning a landscaping project?

Schedule large landscaping projects for dry weather. Cover bare soil with mulch and avoid disturbing the soil along stream banks and lakeshores. Study how water flows across your property and use trees, shrubs, deep-rooted native plants, and raingardens to slow down runoff and prevent erosion.

We need your help to keep our waters clean!

Learn more about Minnesota water at www.pca.state.mn.us/water/construction-stormwater

Since the start of 2020 we've applied rebates for 80 smart irrigation controllers and efficient toilets, totaling over \$10,000 in credits to water bills. These efficient devices are expected to save over 749,000 gallons of water per year!

Program information and rebate forms are available here:
<http://www.lakeelmo.org/residents/water.php>

How much water can we save each year?

The smart irrigation controllers and efficient toilets installed through the City of Lake Elmo Water Rebate Program are estimated to save over 749,000 gallons of water per year!

That's enough to fill -

Lake Elmo Fire Tender 1
374 times



Como Harbor 3 times



10 Steps to Stormwater Pollution Prevention on Small Residential Construction Sites

Note: this graphic does not address post-construction stormwater treatment permit requirements.

1 Protect Any Areas Reserved for Vegetation or Infiltration and Preserve Existing Trees

If you will be installing infiltration-based features such as rain gardens or bioswales, make sure these areas are designated as off limits to avoid compaction.

Save time and money by preserving existing mature trees during construction. Preserving mature trees minimizes the amount of soil that needs to be stabilized once construction is complete, and minimizes the amount of runoff during and after construction activity.

2 Stockpile Your Soil

MPCA's CCP requires operators to preserve native topsoil on site unless infeasible and protect all soil storage piles from run-on and runoff. For smaller stockpiles, covering the entire pile with a tarp may be sufficient.

3 Protect Construction Materials from Run-On and Runoff

At the end of every workday and during precipitation events, provide cover for materials that could leach pollutants.

4 Designate Waste Disposal Areas

Clearly identify separate waste disposal areas on site for hazardous waste, construction waste, and domestic waste by designating with signage, and protect from run-on and runoff.

5 Install Perimeter Controls on Downhill Let Line

Install perimeter controls such as sediment filter logs or silt fences around the downhill boundaries of your site. Make sure to remove accumulated sediment whenever it has reached halfway up the control.

6 Install Inlet Controls

Sediment control logs, gravel barriers, and sand or rock bags are options for effective inlet controls. Make sure to remove accumulated sediment whenever it has reached halfway up the control.

7 Install a Concrete/Stucco Washout Basin

Designate a leak-proof basin lined with plastic for washing out used concrete and stucco containers. Never wash excess stucco or concrete residue down a storm drain or into a stream!

8 Maintain a Stabilized Exit Pad

Minimize sediment track out from vehicles exiting your site by maintaining an exit pad made of crushed rock spread over geotextile fabric, a shaker rack, or a wash rack at the construction site exit. If sediment track-out occurs, remove deposited sediment within 24 hours of discovery.

9 Keep an Up-to-Date Copy of Your SWPPP on Site

Keep a copy of your complete and up-to-date SWPPP, including site maps showing where each BMP is or will be installed, and records of the site inspections completed by a trained inspector on site and easily accessible.

10 Site Stabilization

Immediately stabilize exposed portions of the site whenever construction work will stop for 14 or more days, even if work is only temporarily stopped. Remember, final stabilization is required prior to terminating permit coverage.

Keep in mind that temporary or permanent stabilization must be completed within 7 days if your project is within 1 mile of a special or impaired water.

Small-scale Construction Considerations

Thanks for doing your part to protect Minnesota water!

www.pca.state.mn.us/water/construction-stormwater

For more information, contact
your city or watershed
management organization.

Metropolitan Mosquito Control
District trucks, helicopters, and
staff will be out in neighborhoods
and parks this summer working to
reduce mosquito-borne disease

and annoyance.



Summer weather in Minnesota means we are starting to see an increase in mosquitoes and the Metropolitan Mosquito Control District (MMCD) will be out conducting surveillance and treatment activities to reduce the risk of disease and annoyance in an environmentally-sensitive manner.

Each year the field staff at MMCD monitors and treats wetlands that breed mosquitoes with a fleet of trucks and helicopters. With many people still working from home during the weekday due to the COVID-19 pandemic, more people may notice MMCD activities in local neighborhoods and parks. At times MMCD employees may need to cross private property for access to check and treat areas for mosquito larvae. MMCD management asks the community to please stay several feet away from field staff and ensure children and pets are kept at a distance. If you have questions about mosquito control activities or concerns about an employee, please call the MMCD front desk at (651) 645-9149 or visit MMCD.org.



New Interactive Parks and Trails Map

In 2021 the City introduced a new Interactive Parks and Trails Map showcasing City Parks, Trailheads, and Trail maps. Check it out [here!](#)



WATERING RESTRICTION REMINDER

Please note that in order to preserve the water supply there are limitations placed on watering, sprinkling and irrigating lawns. Even numbered postal addresses may water only on even numbered days, and property owners with odd numbered addresses may water only on odd numbered days.

WATERING IS ONLY PERMITTED BETWEEN THE HOURS OF 7PM AND 5AM

Failure to comply with these restrictions shall result in a \$100 surcharge for water service for each violation. Continued violations may result in the disconnection of water service.

Please share the word with your neighbors. If you have any questions call Public Works 651-747-3940.



The City of Lake Elmo is Accepting Applications for the Following Positions:

- Building Official
- Paid on Call Firefighters

[Visit our website](#)

Washington County Sheriff Department

If you are planning on being away from home or on vacation please follow some of the tips below to increase the safety and security of your property.

1. Lock all of the doors and windows.
2. Clear out the mailbox and notify the post office to hold your mail until you return. If you are having packages delivered be sure to use the package tracking options and arrange for the package to be picked up by a friend of family member.
3. Keep the yard and/or driveway maintained. Removal of snow from the driveway and walking paths is important.
4. Hide or secure your valuables from view of windows. Using safes is helpful in securing important items.
5. Don't broadcast your plans of being gone on social media. Only notify those who will be helping you in keeping an eye on your residence like a neighbor, family or friends.
6. Get your security system updated, tested and notified of your vacancy. Posting security signage in your yard on residence can help with deterrence of theft and burglary. Many door camera systems can be purchased at a reasonable price with instant notification of activity at your residence while you are away.
7. Adjust your heating settings especially as temperatures can drop significantly this time of year to avoid frozen water lines.
8. Security lighting and timers. The proper lighting on your residence can help to deter theft.
9. Request vacation checks through the Sheriff's Office while you are out of town.

These are just a few quick steps you can take to increase the security of your home while you are away. If you are interested in receiving information on vacation checks call our non-emergency number 651-439-9381



Lake Elmo businesses are invited to sign up to attend National Night Out on Tuesday, August 3rd. This event will bring together old and new residents of Lake Elmo in a community building campaign to promote partnerships with law enforcement and local businesses. If you are interested in participating please fill out the linked form below.

[Sign Up Here](#)



HIGHWAY 36 AND MANNING AVENUE INTERCHANGE PROJECT

Washington
County

New Construction Update Available

Follow the link below to see the latest Construction Update:

Construction Update: June 14, 2021

To learn more about the project, visit the project website at:
www.co.washington.mn.us/Manning36Interchange

County Highway 13 (Ideal Avenue) Phase II

Washington County in partnership with the City of Lake Elmo are providing an online project update on the proposed improvements to Ideal Avenue between County Highway 14 and 44th Street. The project website provides program information and updates.

[Project Website](#)



ADOPT A STORM DRAIN



Storm drains in our city help to protect neighborhoods from flooding, but they also carry litter and polluted runoff from streets and parking lots into nearby lakes and streams.

You can make a difference by volunteering just 15-minutes, twice a month, to keep their nearest storm drain clear of litter, leaves, grass clippings and dirt. To sign up: go to www.Adopt-a-Drain.org and use the map to find your neighborhood storm drains – then click and sign-up to adopt.

Xcel Energy Consumer Update

Xcel Energy residential electric customers who have between \$1,000 to \$4,000 in past due charges are eligible for the Payment Plan Credit Program, which could forgive up to 75% of their past-due balance if they enroll and stay current in a payment plan. Customers can enroll in other payment plans we offer through the My Account feature at www.XcelEnergy.com, or contact customer care at 1-800-895-4999



SALLY MANZARA INTERPRETIVE NATURE CENTER RE-OPENED

The nature center, in Sunfish Lake Park, is now open:

9 AM to 4 PM Monday - Tuesday - Thursday -
Friday - Saturday

Please come visit, see in and our updated exhibits,
have a cup of coffee!

Outdoor features can be enjoyed during Park hours
6 AM to 9 PM

Story Stroll presented by Washington County Library
"Dog's Colorful Day"

Emy's Guide to the Animals of Sunfish Lake Park
Rain Garden, Prairie Plant Specimens, Monarch
WayStation, play area

FAMILY NATURE DAY returns, Saturday JULY 10th
9 AM to Noon

Visit our website for details: www.sminc-lake-elmo.org



Lake Elmo's Sunfish Lake Park Annual
Family Nature Day

Saturday July 10th 2021
9 AM to Noon
Rain or Shine

Nature Fun and Educational Activities
Free Nature Photography Workshop -9:30
(to register text 651-769-7001 / or use QR)
Scavenger Hunts / Quiz – prizes for kids
Naturalist and Garden Displays
Live Creatures
Free Coffee and Lemonade

at **Sally Manzara Interpretive Nature Center**

www.sminc-lake-elmo.org



Well sampling in the east metro area

If you live in the area that is a priority for testing, you can request that your private well water be tested.

- To see if you live in the priority sampling area, use the [interactive map](#).
- If you live in the priority sampling area, you can request to have your well tested by filling out and [submitting this online form](#).

More information about the priority testing area is available on theWell sampling in the [East Metro Area webpage](#).

Water Conservation Rebate Program

The City of Lake Elmo, in partnership with the Metropolitan Council, is offering a rebate program for purchases of eligible WaterSense toilets and Smart Irrigation Controllers. Qualifying purchases are eligible for up to a \$200 credit on your water bill.

[Program Details Available Here](#)



Water Wisely: Start in your own backyard

Water is a precious resource needed by all living things. If you care for a yard or garden, you can help protect water resources by being wise about watering practices, starting in your own backyard.

Much of our treated drinking water is also used for landscape irrigation, so it pays to reduce water use and protect our supply by being wise about landscape watering practices at home.

Although all plants need water to be healthy and grow, some—like lawns—actually need less water than we think. While others—like trees—need more. Knowing the what, when, where and how of watering in your garden or landscape is key to growing healthy plants and conserving our precious water supply.

See the University of Minnesota's "Watering Wisely" tips [here](#).



LAKE ELMO FARMER'S MARKET

A 501/C/3 NON-PROFIT

We will open June 19 Saturday 9am to 1pm to Sept 4th

We are located at LE Elementary School

**Please note Date was wrong on last week's issues of
Fresh.**

**Please note our last day of the Market. Please accept
our apologies.**

Thank you

Our Market is Full and we have a great selection.

Visit us at our "Lake Elmo Farmer's Market" Facebook site.

Like us on Facebook "Lake Elmo Farmers Market" and watch for updates!



Lake Elmo Farmer's Market will be starting a Fundraiser for the Washington Co. Sheriff's Department Canine Unit.

Lake Elmo Farmer's Market will match donations up to \$1,000.00!!

Please come to the Farmer's Market and give generously.

Market opens June 19th every Saturday 9-1 to September 4th.

See you at the Market!

Business and Community working together/ Lake Elmo Farmer's Market is a 501c3



New Lake Elmo Library Hours

Lake Elmo Library is returning to pre-pandemic hours beginning June 1! Stop by the library to check out books, use a computer, reserve a meeting room, and participate in a variety of summer programs.

Library Hours:

Monday and Friday: 10 a.m.-4 p.m.

Tuesday, Wednesday, and Thursday: 12-8 p.m.

Saturday: 10 a.m.-2 p.m.

Sunday: Closed

Learn more about current library services at WashCoLib.org/Covid19

Summer Reading at your Library

Summer Reading programs for kids, teens, and adults run from June 1-August 31.

To get started, stop by any WashCoLib branch to pick up a game card with activities to complete over the summer. You can also download game cards on the library's website or complete the program entirely online. When you're finished, drop your game card off to get a reward and enter our drawings for a prize. Learn more at WashCoLib.org

Washington County Library Events

Public Facilities Project Update

Regular updates and documents are available [here](#).



- 1 New City Hall Entrance
- 2 New Fire Station Expansion
- 3 Council Chambers/Community room addition
- 4 Parking
- 5 Fire Department Parking
- 6 City Hall/Sheriff
- 7 Laverne Avenue

LEO A DALY

CITY OF LAKE ELMO COMBINED CITY HALL & PUBLIC SAFETY FACILITY

The new Lake Elmo City Hall / Public Safety Facility combines City Hall staff and functions, the entire Fire Department, and a satellite office for the Washington County Sheriff's department. This co-location involves renovating and expanding the City-owned Brookfield Office building to concentrate civic resources into a single structure at the historic core of the city. In addition, the Public Works facility will also be expanded to accommodate City growth and expanded service needs.



TOTAL ANTICIPATED PROJECT COST: \$14,600,000
DESIGN COMPLETION: Late summer 2021
CONSTRUCTION COMPLETION: Fall of 2022





MEETING THE DEMANDS OF AN EVOLVING FIRE SERVICE

Lake Elmo currently has two fire stations, Fire Station #1 at 3510 Laverne Ave. N. and Fire Station #2 at 4259 Jamaica Ave. N. This project will consolidate these two stations into a single, state-of-the-art station that will meet the needs of our community and firefighters today and into the future. The building is designed to accommodate increasing call volumes, meet the demands for training and to support our evolving role as all hazard responders.

Due to the changing environment of fire department staffing needs and the impacts of that in relation to incident response times and budget responsibility, the fire department is consolidating to a single station which will allow the department the ability to transition to a staffing model that provides 24/7 coverage from the single station. This change requires the updated facilities like staff dorm rooms, day room and kitchen area, fitness room, staff workspaces and offices.

Educational materials provided by the City of Lake Elmo

For more information, visit our website: www.lakeelmo.org or contact Kristina Handt, Administrator at KHandt@lakeelmo.org



The current fire stations are too small to accommodate modern apparatus and equipment and cannot provide adequate health protections for our firefighters.

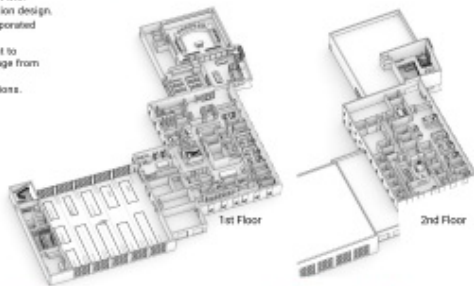
A FUNCTIONAL FIRE STATION

A new, single, state-of-the-art station will meet the needs of our community and firefighters today and into the future. Designed to accommodate our evolving role as all-hazard responders it will:

- Modernize our facilities following best practices in station design.
- Enhance firefighter training with training features incorporated into the building.
- The addition of living quarters will allow the department to transition to a staffing model that provides 24/7 coverage from the single station.
- Improve response times and overall department operations.

DESIGNED FOR FIREFIGHTER HEALTH AND SAFETY

- Distinct spaces to properly decontaminate gear and equipment. Focus to reduce staff exposure to firefighting carcinogens and other toxic materials.
- Properly ventilate the apparatus bay to reduce staff exposure to diesel exhaust and other harmful fumes.
- Space that supports the physical and mental health of staff.
- Clear separation between public and private spaces.



Lake Elmo City Hall, built in 1986, is a very small 2,806 SF. There are insufficient offices for all staff members and the restrooms are not accessible. The council chambers are small, do not provide sufficient space for department heads or members of the public, and lack modern technological updates. City staff have long outgrown this building and have since moved into the Brookfield Building located across the parking lot.

The Brookfield Building was purchased by the City in 2018 as a method of maintaining city functions next to the outgrown City Hall at a lower cost alternative to new construction. It was constructed in 1980 and will require a major overhaul to increase its useful life.

AN EXPANDED AND IMPROVED CITY HALL

- Improved service accessibility
- Community room available for public use
- New council chambers with updated technology
- Additional conference rooms
- Co-locate Washington County Sheriff staff
- Office space for growth of city staff
- Accessible restrooms.

