



# fresh

Your Weekly Source for City News and Information

## Emergency Outdoor Watering Ban Extended



### Emergency Outdoor Watering Ban Extended

At the City Council meeting Tuesday, June 15<sup>th</sup> the Lake Elmo City Council adopted a resolution extending the Emergency Outdoor Watering Ban. The outdoor watering ban that was affective June 11 shall remain in effect. The watering ban prohibits all outdoor watering by mechanical or automatic means. The outdoor watering ban is in effect until further notice and includes the watering of lawns, irrigation, and vehicle washing. Hand held watering of flowers, gardens, and landscaping is permitted. Pool filling (both wading and swimming) is permitted. Use of water toys/water sprinklers for children actively playing is permitted.

The watering of new sod and the seeding of grass is permitted during the watering ban provided that a permit for new sod watering has been obtained from the City. No new permits for sod will be issued by the City until the watering ban is lifted.

Failure to comply with these restrictions may result in a surcharge for water service for each violation in an amount determined by the City Council, which may be added to the water bill for the property in which such violation occurs. Each day of the violation shall be deemed a separate violation. Continued violations shall be cause for discontinuing water service.

### Public Meetings Next Week

- Parks Commission Meeting Monday, June 21 6:30PM



[City Agendas and Minutes](#)

Visit our website



# City Offices are once again open to the public. City Council, Commission, and Board Meetings are held in the Council Chambers.

## Tuesday, June 15 City Council Meeting Summary

### **At their regular meeting on Tuesday, June 18, 2021 the Lake Elmo City Council:**

- Held a Public Hearing for the Capital Improvement Plan and granted Preliminary Approval to Issue Capital Improvement Bonds
- Heard the Presentation of the 2020 Financial Audit
- Accepted the 2020 MS4 Annual Report and Authorized Staff to submit the Report to the MPCA
- Approved a contract with GoodPointe Technology for Pavement Condition Evaluation Services
- Extended the Emergency Outdoor Watering Ban

### **On the consent agenda the Council:**

- Approved Payment of Disbursements
- Accepted May 2021 Building Department Report
- Accepted May 2021 Public Works Department Report
- Accepted May 2021 Fire Department Report
- Approved 2021 Staff Wage Adjustments
- Approved Purchase Agreement with North Point Development Agreement
- Approved Change Order No. 1 for the 2021 Mill and Overlay Project
- Approved Pay Request No. 1 for the 2021 Mill and Overlay Project
- Approved Pay Request No. 1 for the 50th Street PRV Valve & Linden Ave Storm Sewer Replacement
- Approved Pay Request No. 2 for Old Village Phase 5 and 6 Street and Utility Improvements
- Approved Change Order No. 1 for Heritage Farms Street and Utility Improvements
- Approved Pay Request No. 2 for Heritage Farms Street and Utility Improvements
- Approved Change Order No. 1 for Hamlet on Sunfish Lake Street and Utility Improvements
- Approved Pay Request No. 2 for Hamlet on Sunfish Lake Street and Utility Improvements
- Approved Pay Request No. 7 for Stonegate Addition Street and Utility Improvements

## Monday, June 21 Parks Commission Meeting Agenda



*Our Mission is to Provide Quality Public  
Services in a Fiscally Responsible Manner  
While Preserving the City's Open Space  
Character*

## **NOTICE OF MEETING**

**City of Lake Elmo Parks Commission  
3800 Laverne Avenue North  
June 21, 2021 6:30 PM**

### **AGENDA**

1. Call to Order
2. Pledge of Allegiance
3. Approve Agenda
4. Approve Minutes
  - a) April 19, 2021 minutes
5. Public Comments
6. Deer Hunting in Sunfish Lake Park – Washington County Presentation
7. Capital Improvement Plan (CIP)
8. Sunfish Lake Trail Reroute
9. Bike Repair Station – 2<sup>nd</sup> Location
10. Communications
11. Adjourn

*\*\*\*Note: Every effort will be made to accommodate person or persons that need special considerations to attend this meeting due to a health condition or disability. Please contact the Lake Elmo City Clerk if you are in need of special accommodations.*

[Visit our website](#)

---

**Public Facilities Project Update**



- 1 New City Hall Entrance
- 2 New Fire Station Expansion
- 3 Council Chambers/Community room addition
- 4 Parking
- 5 Fire Department Parking
- 6 City Hall/Sheriff
- 7 Laverne Avenue

## CITY OF LAKE ELMO COMBINED CITY HALL & PUBLIC SAFETY FACILITY

The new Lake Elmo City Hall / Public Safety Facility combines City Hall staff and functions, the entire Fire Department, and a satellite office for the Washington County Sheriff's department. This co-location involves renovating and expanding the City-owned Brookfield Office building to concentrate civic resources into a single structure at the historic core of the city. In addition, the Public Works facility will also be expanded to accommodate City growth and expanded service needs.



**TOTAL ANTICIPATED PROJECT COST:** \$14,600,000  
**DESIGN COMPLETION:** Late summer 2021  
**CONSTRUCTION COMPLETION:** Fall of 2022







### MEETING THE DEMANDS OF AN EVOLVING FIRE SERVICE

Lake Elmo currently has two fire stations, Fire Station #1 at 3510 Laverne Ave. N. and Fire Station #2 at 4259 Jamaica Ave. N. This project will consolidate these two stations into a single, state-of-the-art station that will meet the needs of our community and firefighters today and into the future. The building is designed to accommodate increasing call volumes, meet the demands for training and to support our evolving role as all hazard responders.

Due to the changing environment of fire department staffing needs and the impacts of that in relation to incident response times and budget responsibility, the fire department is consolidating to a single station which will allow the department the ability to transition to a staffing model that provides 24/7 coverage from the single station. This change requires the updated facilities like staff dorm rooms, day room and kitchen area, fitness room, staff workspaces and offices.

Educational materials provided by the City of Lake Elmo

For more information, visit our website: [www.lakeelmo.org](http://www.lakeelmo.org) or contact Kristina Handt, Administrator at [KHandt@lakeelmo.org](mailto:KHandt@lakeelmo.org)



The current fire stations are too small to accommodate modern apparatus and equipment and cannot provide adequate health protections for our firefighters.

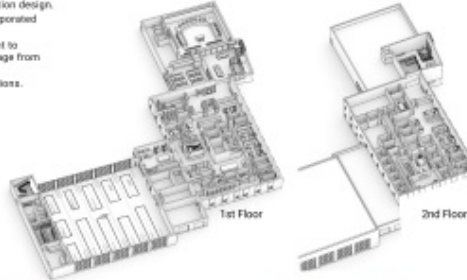
### A FUNCTIONAL FIRE STATION

A new, single, state-of-the-art station will meet the needs of our community and firefighters today and into the future. Designed to accommodate our evolving role as all-hazard responders it will:

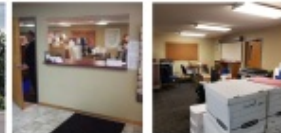
- Modernize our facilities following best practices in station design.
- Enhance firefighter training with training features incorporated into the building.
- The addition of living quarters will allow the department to transition to a staffing model that provides 24/7 coverage from the single station.
- Improve response times and overall department operations.

### DESIGNED FOR FIREFIGHTER HEALTH AND SAFETY

- Distinct spaces to properly decontaminate gear and equipment. Focus to reduce staff exposure to firefighting carcinogens and other toxic materials.
- Properly ventilate the apparatus bay to reduce staff exposure to diesel exhaust and other harmful fumes.
- Space that supports the physical and mental health of staff.
- Clear separation between public and private spaces.



Lake Elmo City Hall, built in 1986, is a very small 2,806 SF. There are insufficient offices for all staff members and the restrooms are not accessible. The council chambers are small, do not provide sufficient space for department heads or members of the public, and lack modern technological updates. City staff have long outgrown this building and have since moved into the Brookfield Building located across the parking lot.



The Brookfield Building was purchased by the City in 2018 as a method of maintaining city functions next to the outgrown City Hall at a lower cost alternative to new construction. It was constructed in 1980 and will require a major overhaul to increase its useful life.



### AN EXPANDED AND IMPROVED CITY HALL

- Improved service accessibility
- Community room available for public use
- New council chambers with updated technology
- Additional conference rooms
- Co-locate Washington County Sheriff staff
- Office space for growth of city staff
- Accessible restrooms.



Regular updates and documents are available [here](#).

9th Annual

# GREAT IDEA! COMPETITION

**WANT TO MAKE YOUR  
COMMUNITY BETTER?**

**WIN UP TO \$10K FOR  
YOUR CIVIC-MINDED  
PROJECT!**

- The winning idea could be just about anything that benefits our communities!
- Open to individuals, businesses, groups and non-profits.
- Application deadline: July 1, 2021
- Questions? Contact us:  
[info@stillwaterareafoundation.org](mailto:info@stillwaterareafoundation.org)

**BROUGHT TO YOU BY**

**STILLWATER AREA**



BAYPORT / BAYTOWN TOWNSHIP  
GRANT / LAKE ELMO / MARINE  
ON ST. CROIX / MAY TOWNSHIP  
OAK PARK HEIGHTS / STILLWATER  
STILLWATER TOWNSHIP  
WEST LAKELAND TOWNSHIP

**More info and application at  
[StillwaterAreaFoundation.org](http://StillwaterAreaFoundation.org)**

*Keeping philanthropy local.  
Making the world better from Bayport to Marine  
and communities in between. A community  
foundation affiliate of the St. Croix Valley Foundation.*

# FOOD TRUCK

WEDNESDAYS



**11AM-3PM**

**JUNE 2, 16 & 30**

**JULY 14 & 28**

**AUGUST 11 & 25**

**4PM-8PM**

**JUNE 9 & 23**

**JULY 7 & 21**

**AUGUST 4 & 18**



ARBOR GLEN SENIOR LIVING  
11020 39TH ST N  
LAKE ELMO, MN 55042

VISIT ARBOR GLEN OR THE FIELDS  
ON FACEBOOK TO DISCOVER THE  
FOOD TRUCK(S) OF THE WEEK!

**OR CALL US AT 651-704-1444**

[WWW.ARBORSENIOR.COM](http://WWW.ARBORSENIOR.COM) [WWW.FIELDSATARBORGLEN.COM](http://WWW.FIELDSATARBORGLEN.COM)



**Arbor Glen**  
Senior Living

*Independent Living · Assisted Living · Memory Care*



**The Fields**  
*at Arbor Glen*

*Independent Living Apartments & Townhomes*

 **EBENEZER**



# FOOD TRUCK FRIDAY!

COMMUNITY EVENT  
Fridays from 4:30 - 7:00 pm



## Mahtomedi District Education Center

1520 Mahtomedi Ave, Mahtomedi

- April 16 iPierogi + Xssant
- May 21 El Pariente + D and D Goodies Asian flair + KP Concessions Mini Donuts
- June 18 Up in Smoke + KEO's Shave Ice
- July 23 Pig Approved BBQ + Maui Wowie
- August 13 The Big Cheese + Cookies & Cream Scoop Shop

*Yard Games! Outdoor seating only.  
Bring a lawn chair or blanket.  
Rain or Shine.*

## White Bear Area Senior Center

2484 E County Rd F, WBL

- April 23 iPierogi + Droolin' Moose
- May 14 Pig Approved BBQ + Cookies & Cream Scoop Shop
- June 25 KCM Egg Rolls
- July 16 Up in Smoke + KEO's Shave Ice
- August 20 The Big Cheese + Maui Wowie

*Indoor/Outdoor seating.  
Or bring a lawn chair.  
Rain or Shine*



**Grab & Go or Stay & Eat!**

*A portion of proceeds are donated back to:*  
White Bear Lake / Support Senior Programs  
Mahtomedi / Support Community Ed Scholarships



# Small-scale Construction

Prevent erosion and protect Minnesota's water during construction, remodeling and landscaping projects.

Bare soil can erode easily during construction and landscaping projects. Though soil is natural, it can pollute lakes, rivers and streams by smothering habitat and making the water cloudy and unsafe for swimming.



## Stormwater Pollution Prevention

### Building a new home?

Refer to the diagram on the back of this page for guidance on preventing erosion and stormwater pollution.

When construction is in progress, verify that your builder has installed silt fence or other sediment control measures along the down slope perimeter of your property and near curbs, gutters, ditches, streams, lakes and wetlands. All bare soil must be covered and soil piles must be stabilized as well.

As a homeowner, you are responsible for inspecting and maintaining temporary stabilization measures until permanent ground cover is established on your yard. Reinstall or replace ripped, collapsed, or decomposed silt fence and remove sediment if deposits reach 1/3 of the silt fence height. Use downspout extenders to protect temporarily stabilized areas from roof runoff until permanent vegetation is established.

### Establishing a new lawn?

Cover bare soil with erosion control fabric, mulch, or quick-growing annual grasses such as annual rye, oats or winter wheat until you are able to lay sod or seed your lawn. Erosion control fabric can also help to protect hilly areas until new grass is fully established.

### Beginning a landscaping project?

Schedule large landscaping projects for dry weather. Cover bare soil with mulch and avoid disturbing the soil along stream banks and lakeshores. Study how water flows across your property and use trees, shrubs, deep-rooted native plants, and raingardens to slow down runoff and prevent erosion.

## We need your help to keep our waters clean!

Learn more about Minnesota water at [www.pca.state.mn.us/water/construction-stormwater](http://www.pca.state.mn.us/water/construction-stormwater)

# 10 Steps to Stormwater Pollution Prevention on Small Residential Construction Sites

Note: this graphic does not address post-construction stormwater treatment permit requirements.

## 1 Protect Any Areas Reserved for Vegetation or Infiltration and Preserve Existing Trees

If you will be installing infiltration-based features such as rain gardens or bioswales, make sure these areas are designated as off limits to avoid compaction. Save time and money by preserving existing mature trees during construction. Preserving mature trees minimizes the amount of soil that needs to be stabilized once construction is complete, and minimizes the amount of runoff during and after construction activity.

## 2 Stockpile Your Soil

MPCA's CCP requires operators to preserve native topsoil on site unless infeasible and protect all soil storage piles from run-on and runoff. For smaller stockpiles, covering the entire pile with a tarp may be sufficient.

## 3 Protect Construction Materials from Run-On and Runoff

At the end of every workday and during precipitation events, provide cover for materials that could leach pollutants.

## 4 Designate Waste Disposal Areas

Clearly identify separate waste disposal areas on site for hazardous waste, construction waste, and domestic waste by designating with signage, and protect from run-on and runoff.

## 5 Install Perimeter Controls on Downhill Lot Line

Install perimeter controls such as sediment filter logs or silt fences around the downhill boundaries of your site. Make sure to remove accumulated sediment whenever it has reached halfway up the control.

## 6 Install Inlet Controls

Sediment control logs, gravel barriers, and sand or rock bags are options for effective inlet controls. Make sure to remove accumulated sediment whenever it has reached halfway up the control.

## 7 Install a Concrete/Stucco Washout Basin

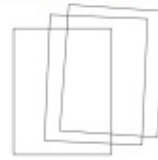
Designate a leak-proof basin lined with plastic for washing out used concrete and stucco containers. Never wash excess stucco or concrete residue down a storm drain or into a stream!

## 8 Maintain a Stabilized Exit Pad

Minimize sediment track out from vehicles exiting your site by maintaining an exit pad made of crushed rock spread over geotextile fabric, a shaker rack, or a wash rack at the construction site exit. If sediment track-out occurs, remove deposited sediment within 24 hours of discovery.

## 9 Keep an Up-to-Date Copy of Your SMP on Site

Keep a copy of your complete and up-to-date SWPPP, including site maps showing where each BMP is or will be installed, and records of the site inspections completed by a trained inspector on site and easily accessible.



## 10 Site Stabilization

Immediately stabilize exposed portions of the site whenever construction work will stop for 14 or more days, even if work is only temporarily stopped. Remember, final stabilization is required prior to terminating permit coverage.

Keep in mind that temporary or permanent stabilization must be completed within 7 days if your project is within 1 mile of a special or impaired water.

## Small-scale Construction Considerations

Thanks for doing your part to protect Minnesota water!

[www.pca.state.mn.us/water/construction-stormwater](http://www.pca.state.mn.us/water/construction-stormwater)

For more information, contact your city or watershed management organization.



**Metropolitan Mosquito Control District trucks, helicopters, and staff will be out in neighborhoods and parks this summer working to reduce mosquito-borne disease and annoyance.**

Summer weather in Minnesota means we are starting to see an increase in mosquitoes and the Metropolitan Mosquito Control District (MMCD) will be out conducting surveillance and treatment activities to reduce the risk of disease and annoyance in an environmentally-sensitive manner.

Each year the field staff at MMCD monitors and treats wetlands that breed mosquitoes with a fleet of trucks and helicopters. With many people still working from home during the weekday due to the COVID-19 pandemic, more people may notice MMCD activities in local neighborhoods and parks. At times MMCD employees may need to cross private property for access to check and treat areas for mosquito larvae. MMCD management asks the community to please stay several feet away from field staff and ensure children and pets are kept at a distance. If you have questions about mosquito control activities or concerns about an employee, please call the MMCD front desk at (651) 645-9149 or visit [MMCD.org](http://MMCD.org).



## New Interactive Parks and Trails Map

In 2021 the City introduced a new Interactive Parks and Trails Map showcasing City Parks, Trailheads, and Trail maps. Check it out [here!](#)



Public Works Crews will begin filling potholes on Lake Elmo streets Monday, March 1st. Feel free to report potholes by calling Public Works at 651-747-3940 or City Hall at 651-747-3900. Please slow down when approaching street crews. Thank you for your cooperation.



**The City of Lake Elmo is Accepting Applications for the Following Positions:**

- Building Official
- Paid on Call Firefighters

[Visit our website](#)



# Washington County Sheriff Department

If you are planning on being away from home or on vacation please follow some of the tips below to increase the safety and security of your property.

1. Lock all of the doors and windows.
2. Clear out the mailbox and notify the post office to hold your mail until you return. If you are having packages delivered be sure to use the package tracking options and arrange for the package to be picked up by a friend of family member.
3. Keep the yard and/or driveway maintained. Removal of snow from the driveway and walking paths is important.
4. Hide or secure your valuables from view of windows. Using safes is helpful in securing important items.
5. Don't broadcast your plans of being gone on social media. Only notify those who will be helping you in keeping an eye on your residence like a neighbor, family or friends.
6. Get your security system updated, tested and notified of your vacancy. Posting security signage in your yard on residence can help with deterrence of theft and burglary. Many door camera systems can be purchased at a reasonable price with instant notification of activity at your residence while you are away.
7. Adjust your heating settings especially as temperatures can drop significantly this time of year to avoid frozen water lines.
8. Security lighting and timers. The proper lighting on your residence can help to deter theft.
9. Request vacation checks through the Sheriff's Office while you are out of town.

These are just a few quick steps you can take to increase the security of your home while you are away. If you are interested in receiving information on vacation checks call our non-emergency number 651-439-9381



Lake Elmo businesses are invited to sign up to attend National Night Out on Tuesday, August 3rd. This event will bring together old and new residents of Lake Elmo in a community building campaign to promote partnerships with law enforcement and local businesses. If you are interested in participating please fill out the linked form below.

[Sign Up Here](#)



## HIGHWAY 36 AND MANNING AVENUE INTERCHANGE PROJECT

Washington  
County

### New Construction Update Available

Follow the link below to see the latest Construction Update:



## Construction Update: June 14, 2021

To learn more about the project, visit the project website at:  
[www.co.washington.mn.us/Manning36Interchange](http://www.co.washington.mn.us/Manning36Interchange)

### **County Highway 13 (Ideal Avenue) Phase II**

Washington County in partnership with the City of Lake Elmo are providing an online project update on the proposed improvements to Ideal Avenue between County Highway 14 and 44th Street. The project website provides program information and updates.

[Project Website](#)



**ADOPT  
A STORM  
DRAIN**



Storm drains in our city help to protect neighborhoods from flooding, but they also carry litter and polluted runoff from streets and parking lots into nearby lakes and streams.

You can make a difference by volunteering just 15-minutes, twice a month, to keep their nearest storm drain clear of litter, leaves, grass clippings and dirt. To sign up: go to [www.Adopt-a-Drain.org](http://www.Adopt-a-Drain.org) and use the map to find your neighborhood storm drains – then click and sign-up to adopt.

### **Xcel Energy Consumer Update**

Xcel Energy residential electric customers who have between \$1,000 to \$4,000 in past due charges are eligible for the Payment Plan Credit Program, which could forgive up to 75% of their past-due balance if they enroll and stay current in a payment plan. Customers can enroll in other payment plans we offer through the My Account feature at [www.XcelEnergy.com](http://www.XcelEnergy.com), or contact customer care at 1-800-895-4999



## SALLY MANZARA INTERPRETIVE NATURE CENTER RE-OPENED

The nature center, in Sunfish Lake Park, is now open:

9 AM to 4 PM Monday - Tuesday - Thursday -  
Friday - Saturday

Please come visit, see in and our updated exhibits,  
have a cup of coffee!

Outdoor features can be enjoyed during Park hours  
6 AM to 9 PM

Story Stroll presented by Washington County Library  
"Dog's Colorful Day"

Emy's Guide to the Animals of Sunfish Lake Park  
Rain Garden, Prairie Plant Specimens, Monarch  
WayStation, play area

Upcoming: Librarian Reading "Summer Storytime"  
Friday June 11th at 10 AM

Buckthorn Removal work party Saturday June 12th  
at 9:30 AM

(call George for more detail, 651-757-5610)

FAMILY NATURE DAY returns, Saturday JULY 10th  
9 AM to Noon

Visit our website for details: [www.sminc-lake-elmo.org](http://www.sminc-lake-elmo.org)



## Well sampling in the east metro area

If you live in the area that is a priority for testing, you can request that your private well water be tested.

- To see if you live in the priority sampling area, use the [interactive map](#).
- If you live in the priority sampling area, you can request to have your well tested by filling out and [submitting this online form](#).

More information about the priority testing area is available on the [Well sampling in the East Metro Area webpage](#).

## Water Conservation Rebate Program

The City of Lake Elmo, in partnership with the Metropolitan Council, is offering a rebate program for purchases of eligible WaterSense toilets and Smart Irrigation Controllers. Qualifying purchases are eligible for up to a \$200 credit on your water bill.



[Program Details Available Here](#)



### **Water Wisely: Start in your own backyard**

Water is a precious resource needed by all living things. If you care for a yard or garden, you can help protect water resources by being wise about watering practices, starting in your own backyard.

Much of our treated drinking water is also used for landscape irrigation, so it pays to reduce water use and protect our supply by being wise about landscape watering practices at home.

Although all plants need water to be healthy and grow, some—like lawns—actually need less water than we think. While others—like trees—need more. Knowing the what, when, where and how of watering in your garden or landscape is key to growing healthy plants and conserving our precious water supply.

See the University of Minnesota's "Watering Wisely" tips [here](#).





## **LAKE ELMO FARMER'S MARKET**

A 501/C/3 NON-PROFIT

**We will open June 19 Saturday 9am to 1pm to Sept 4<sup>th</sup>**

**We are located at LE Elementary School**

**Please note Date was wrong on last week's issues of  
Fresh.**

**Please note our last day of the Market. Please accept  
our apologies.**

**Thank you**

Our Market is Full and we have a great selection.

*Visit us at our "Lake Elmo Farmer's Market" Facebook site.*

*Like us on Facebook "Lake Elmo Farmers Market" and watch for updates!*



Lake Elmo Farmer's Market will be starting a Fundraiser for the  
Washington Co. Sheriff's Department Canine Unit.

*Lake Elmo Farmer's Market will match donations up to  
\$1,000.00!!*

Please come to the Farmer's Market and give generously.

Market opens June 19<sup>th</sup> every Saturday 9-1 to  
September 4<sup>th</sup>.

See you at the Market!

Business and Community working together/ Lake Elmo Farmer's Market is a 501c3



## MAY BOOK SALE

### LAKE ELMO LIBRARY

Branch of WASHINGTON COUNTY LIBRARY  
3537 Lake Elmo Ave.

FEATURING BOOKS ON  
GARDENING,  
NATURE AND BIRDS

HARDCOVER BOOKS \$2 / PAPERBACKS \$1



**LEVEL UP!**

SUMMER AT YOUR LIBRARY

KIDS      TEENS      ADULTS

## **New Lake Elmo Library Hours**

Lake Elmo Library is returning to pre-pandemic hours beginning June 1! Stop by the library to check out books, use a computer, reserve a meeting room, and participate in a variety of summer programs.

Library Hours:

Monday and Friday: 10 a.m.-4 p.m.

Tuesday, Wednesday, and Thursday: 12-8 p.m.

Saturday: 10 a.m.-2 p.m.

Sunday: Closed

Learn more about current library services at [WashCoLib.org/Covid19](https://WashCoLib.org/Covid19)

## **Summer Reading at your Library**

Summer Reading programs for kids, teens, and adults run from June 1-August 31.

To get started, stop by any WashCoLib branch to pick up a game card with activities to complete over the summer. You can also download game cards on the library's website or complete the program entirely online. When you're finished, drop your game card off to get a reward and enter our drawings for a prize. Learn more at [WashCoLib.org](https://WashCoLib.org)

Washington County Library Events