



# fresh

Your Weekly Source for City News and Information

## Public Meetings Next Week

- Parks Commission Meeting Monday, April 19th 6:30PM
- EDA Meeting Tuesday, April 20th 6:00PM
- City Council Meeting Tuesday, April 20th 7:00PM
- The Local Board of Appeal of Equalization Meeting Wednesday, April 21st 5:00PM



Visit our website

[City Agendas and Minutes](#)



**City Offices are once again be open to the public. City Council, Commission, and Board Meetings are held in the Council Chambers.**

Monday, April 19th Parks Commission Meeting Agenda



*Our Mission is to Provide Quality Public  
Services in a Fiscally Responsible Manner  
While Preserving the City's Open Space  
Character*

## **NOTICE OF MEETING**

**City of Lake Elmo Parks Commission  
3800 Laverne Avenue North  
April 19, 2021 6:30 PM**

### **AGENDA**

1. Call to Order
2. Pledge of Allegiance
3. Approve Agenda
4. Approve Minutes
  - a) February 17, 2021 minutes
5. Public Comments
6. Mike Zeno – Lions Park Volleyball Court Courtesy Rules Discussion
  - a) Court Usage Rules
7. Ami Voeltz-Schakel – Sunfish Lake Park
  - a) Park Usage Community Group Representative
8. Communications
  - a) May 6<sup>th</sup> APWA member's community service day.
  - b) County Deer Hunt.
  - c) Bee Keeping in Sunfish.
9. Adjourn

*\*\*\*Note: Every effort will be made to accommodate person or persons that need special considerations to attend this meeting due to a health condition or disability. Please contact the Lake Elmo City Clerk if you are in need of special accommodations.*

Meeting Materials Can Be Accessed [Here](#)

**Tuesday, April 20th EDA Meeting Agenda**



*Our Mission is to Provide Quality Public  
Services in a Fiscally Responsible Manner  
While Preserving the City's Open Space  
Character*

## **NOTICE OF MEETING**

**City of Lake Elmo Economic Development Authority  
Meeting  
3800 Laverne Avenue North  
Tuesday, April 20, 2021 6:00 PM**

### **AGENDA**

- |           |   |                  |
|-----------|---|------------------|
| <b>A.</b> | <b>Call to Order/Roll Call</b>  | <b>6:00 p.m.</b> |
| <b>B.</b> | <b>Election of Officers</b>   | <b>6:00 p.m.</b> |
|           | <b>1. President</b>   |                  |
|           | <b>2. Vice President</b>  |                  |
|           | <b>3. Secretary</b>   |                  |
|           | <b>4. Treasurer</b>   |                  |
|           | <b>5. Assistant Treasurer</b>   |                  |
| <b>C.</b> | <b>2021 Meeting Schedule</b>  | <b>6:15 p.m.</b> |
| <b>D.</b> | <b>Future Agenda Items</b>  | <b>6:20 p.m.</b> |
| <b>E.</b> | <b>The EDA will go into closed session pursuant to Minnesota Statutes Section 13D.05, subdivision 3 (c)(3) – to consider offers for the sale of the former 3M property on Ideal Avenue, south of CSAH 14 (Tax Parcel ID 16.029.21.24.0002 (portion south of CSAH 14 only)).</b> |                  |
| <b>F.</b> | <b>Adjourn</b>  | <b>6:50 p.m.</b> |

Meeting Materials Can Be Accessed [Here](#)

**Tuesday, April 20th City Council Meeting Agenda**



Our Mission is to Provide Quality Public Services in a Fiscally Responsible Manner While Preserving the City's Open Space Character

**NOTICE OF MEETING**  
**City Council Meeting**  
**Tuesday, April 20, 2021 7:00 P.M.**  
**City of Lake Elmo | 3800 Laverne Avenue North**

**Agenda**

- A. Call to Order/Pledge of Allegiance**
- B. Approval of Agenda**
- C. Approval of Minutes**
  - 1. April 6, 2021, April 13, 2021
- D. Public Comments/Inquiries**
- E. Presentations – Arbor Day Proclamation**
- F. Consent Agenda**
  - 2. Approve Payment of Disbursements
  - 3. Accept March 2021 Building Department Report
  - 4. Accept March 2021 Public Works Department Report
  - 5. Accept March 2021 Fire Department Report
  - 6. Accept 1<sup>st</sup> Quarter Financials
  - 7. Approve Hire of Fire Inspector
  - 8. Approve Pay Request No. 5 for Pumphouse No. 6
  - 9. Accept Improvements and Approve Security Reduction for Boulder Ponds 3rd Addition
  - 10. Approve Purchase of Grinder Pump Stations for the Old Village Phase 5 and 6 Improvements
  - 11. Approve Plans and Specifications and Order Advertisement for Bids for the Tamarack Farm Estates Street Improvements – *Resolution 2021-046*
  - 12. Approve Property Conveyance – 2798 Jamley Avenue North – *Resolution 2021-047*
  - 13. Approve Security Reduction for Union Park 1<sup>st</sup> Addition
  - 14. Approve Spring/Summer 2021 Newsletter
- G. Regular Agenda**
  - 15. Legends Development Open Space Concept Plan Review
  - 16. Cooperative Cost Share Agreement and Cooperative Maintenance Agreement for the TH36-Manning Avenue Interchange construction – *Resolution 2021-048*
  - 17. 2022 Budget Calendar
- H. Council Reports**
- I. Staff Reports and Announcements**
- J. Adjourn**

Meeting Materials Can Be Accessed [Here](#)



**Welcome Home, Mullen Family!**

Lake Elmo welcomed home US Army Specialist John Mullen and his family. John lost his legs while serving the country in Kandahar, Afghanistan. The Tunnel to Towers Foundation presented John and his family with a mortgage free smart-home. The ceremony received a tremendous turnout, attended by many residents, City officials, First Responders, and sponsors who made the home possible.



---

## Public Facilities Project Update





- 1 New City Hall Entrance
- 2 New Fire Station Expansion
- 3 Council Chambers/Community room addition
- 4 Parking
- 5 Fire Department Parking
- 6 City Hall/Sheriff
- 7 Laverne Avenue

LEO A DALY

## CITY OF LAKE ELMO COMBINED CITY HALL & PUBLIC SAFETY FACILITY

The new Lake Elmo City Hall / Public Safety Facility combines City Hall staff and functions, the entire Fire Department, and a satellite office for the Washington County Sheriff's department. This co-location involves renovating and expanding the City-owned Brookfield Office building to concentrate civic resources into a single structure at the historic core of the city. In addition, the Public Works facility will also be expanded to accommodate City growth and expanded service needs.



**TOTAL ANTICIPATED PROJECT COST:** \$14,600,000  
**DESIGN COMPLETION:** Late summer 2021  
**CONSTRUCTION COMPLETION:** Fall of 2022





### MEETING THE DEMANDS OF AN EVOLVING FIRE SERVICE

Lake Elmo currently has two fire stations, Fire Station #1 at 3310 Laverne Ave. N. and Fire Station #2 at 4259 Jamaica Ave. N. This project will consolidate these two stations into a single, state-of-the-art station that will meet the needs of our community and firefighters today and into the future. The building is designed to accommodate increasing call volumes, meet the demands for training and to support our evolving role as all hazard responders.

Due to the changing environment of fire department staffing needs and the impacts of that in relation to incident response times and budget responsibility, the fire department is consolidating to a single station which will allow the department the ability to transition to a staffing model that provides 24/7 coverage from the single station. This change requires the updated facilities like staff dorm rooms, day room and kitchen area, fitness room, staff workspaces and offices.

Educational materials provided by the City of Lake Elmo

For more information, visit our website: [www.lakeelmo.org](http://www.lakeelmo.org) or contact Kristina Handt, Administrator at [KHandt@lakeelmo.org](mailto:KHandt@lakeelmo.org)



The current fire stations are too small to accommodate modern apparatus and equipment and cannot provide adequate health protections for our firefighters.

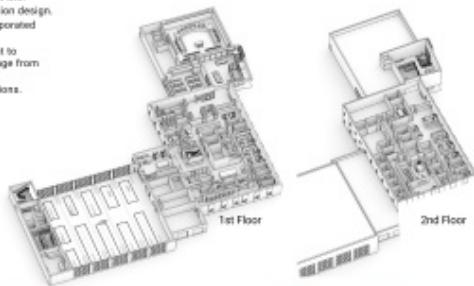
### A FUNCTIONAL FIRE STATION

A new, single, state-of-the-art station will meet the needs of our community and firefighters today and into the future. Designed to accommodate our evolving role as all-hazard responders it will:

- Modernize our facilities following best practices in station design.
- Enhance firefighter training with training features incorporated into the building.
- The addition of living quarters will allow the department to transition to a staffing model that provides 24/7 coverage from the single station.
- Improve response times and overall department operations.

### DESIGNED FOR FIREFIGHTER HEALTH AND SAFETY

- Distinct spaces to properly decontaminate gear and equipment. Focus to reduce staff exposure to firefighting carcinogens and other toxic materials.
- Properly ventilate the apparatus bay to reduce staff exposure to diesel exhaust and other harmful fumes.
- Space that supports the physical and mental health of staff.
- Clear separation between public and private spaces.



Lake Elmo City Hall, built in 1986, is a very small 2,806 SF. There are insufficient offices for all staff members and the restrooms are not accessible. The council chambers are small, do not provide sufficient space for department heads or members of the public, and lack modern technological updates. City staff have long outgrown this building and have since moved into the Brookfield Building located across the parking lot.



The Brookfield Building was purchased by the City in 2018 as a method of maintaining city functions next to the outgrown City Hall at a lower cost alternative to new construction. It was constructed in 1980 and will require a major overhaul to increase its useful life.

### AN EXPANDED AND IMPROVED CITY HALL

- Improved service accessibility
- Community room available for public use
- New council chambers with updated technology
- Additional conference rooms
- Co-locate Washington County Sheriff staff
- Office space for growth of city staff
- Accessible restrooms.



Regular updates and documents are available [here](#).



# Northern Yard Waste Site

Bring leaves, grass clippings, brush, and other plant materials to the Northern Yard Waste Collection Site. The site is free and open to Washington County residents. State law prohibits the disposal of yard waste in the trash.

Search the Disposal Directory to find more drop-off locations: [recyclesearch.com/wcdd](http://recyclesearch.com/wcdd)

**LOCATION: 5527 170th St. N., Hugo**





## HOURS:

### Summer Hours: April – November

**Wednesday**..... 11 a.m. – 7 p.m (or until dusk)

**Friday & Saturday**..... 8 a.m. – 4:30 p.m.

**Sunday** ..... Noon – 4:30 p.m.

### Winter Hours: December - March

**Saturday** ..... 10 a.m. – 3 p.m.

**Sunday – Friday** ..... Closed

Closed: Thanksgiving Day and day after, Christmas Eve, Christmas Day, New Year's Day & other major holidays.

[www.co.washington.mn.us/yardwaste](http://www.co.washington.mn.us/yardwaste) | 651-275-7475



## Accepted Items

Items accepted from households only.

No business waste





# Yard Waste

- Grass clippings
- Leaves
- Lake weeds
- Garden waste



# Brush

- Branches and twigs
- No stumps
- Tree waste and shrubs



# Organics

- Food scraps
- Paper towels and tissues

**Keep organics separate from yard waste.**

Sign up online & pick up a free organics starter kit!  
[www.co.washington.mn.us/organics](http://www.co.washington.mn.us/organics)



## Spring has sprung!

### Advice for eco-friendly landscaping, native gardens, & shoreline buffers

#### ☐ "Leaf" some for the bees

In the early days of spring, many pollinators and beneficial insects are still in hibernation. Wait until the daytime temps are consistently above 50°F to cut down stems and rake leaves out of garden beds.

#### ☐ Wait to rake or fertilize your lawn

In the early spring, most lawns are still soft. Raking injures the grass and creates bare patches for weeds to grow. Fertilizing too early encourages the grass to grow tall instead of building healthy roots.

#### ☐ Don't trim oak branches or dig near oaks

April, May and June are high risk months for oak wilt, a fungal disease that kills thousands of oak trees every year.

#### ☐ Plan a native garden

Native plants provide food and habitat for birds and pollinators and don't need irrigation, fertilizer, or lawn chemicals.

Use the "Plant Finder" tool at [www.BlueThumb.org](http://www.BlueThumb.org) to learn which native plants are best suited for your yard - whether it is sunny or shady, wet or dry. The website also has links to native plant retailers.

#### ☐ Attend a free workshop

Native shoreline buffers: April 29, 6-7:15pm  
Register online: [tinyurl.com/shorelines21](http://tinyurl.com/shorelines21)

All Things Raingarden: May 11, 6-7:15pm  
Register online: [tinyurl.com/raingarden21](http://tinyurl.com/raingarden21)

Blue Thumb - Planting for Clean Water:  
• Resilient Yards  
• Bee Lawns  
• Planting for Clean Water  
More dates at [bluethumb.org/events](http://bluethumb.org/events)

#### ☐ Schedule a free site visit

[www.mnwcd.org/site-visit-signup-form](http://www.mnwcd.org/site-visit-signup-form)

A typical site visit lasts 30-60min:  
• Begin planning native garden, raingarden, and shoreline planting projects  
• Get advice on ways to manage erosion and invasive species  
• Learn about available grants

### East Metro Water Resource Education Programs

- [Shoreline Realtor Workshop](#) – April 19
- [Raingarden Workshop](#) – May 11, 6-7:15pm
- [2021 Workshops for the Public](#)



To celebrate Earth Day, you can participate in Earth Day Action Quest! Participate in waste reduction activities to help protect the planet and to get entered into a drawing for a \$50 Visa gift card. [Join in here!](#)



Public Works Crews will begin filling potholes on Lake Elmo streets Monday, March 1st. Feel free to report potholes by calling Public Works at 651-747-3940 or City Hall at 651-747-3900. Please slow down when approaching street crews. Thank you for your cooperation.



Spring has sprung and nets are up at courts in City parks!



**The City of Lake Elmo is Accepting Applications for the Following Positions:**

- Building Official
- Public Works Seasonal Employees
- Paid on Call Firefighters

[Visit our website](#)

# Washington County Sheriff Department

If you are planning on being away from home or on vacation please follow some of the tips below to increase the safety and security of your property.

1. Lock all of the doors and windows.
2. Clear out the mailbox and notify the post office to hold your mail until you return. If you are having packages delivered be sure to use the package tracking options and arrange for the package to be picked up by a friend or family member.
3. Keep the yard and/or driveway maintained. Removal of snow from the driveway and walking paths is important.
4. Hide or secure your valuables from view of windows. Using safes is helpful in securing important items.
5. Don't broadcast your plans of being gone on social media. Only notify those who will be helping you in keeping an eye on your residence like a neighbor, family or friends.
6. Get your security system updated, tested and notified of your vacancy. Posting security signage in your yard on residence can help with deterrence of theft and burglary. Many door camera systems can be purchased at a reasonable price with instant notification of activity at your residence while you are away.
7. Adjust your heating settings especially as temperatures can drop significantly this time of year to avoid frozen water lines.
8. Security lighting and timers. The proper lighting on your residence can help to deter theft.
9. Request vacation checks through the Sheriff's Office while you are out of town.

These are just a few quick steps you can take to increase the security of your home while you are away. If you are interested in receiving information on vacation checks call our non-emergency number 651-439-9381

---



The background of the flyer is a collage of food images. At the top left, there are several slices of golden-brown bread. To the right, a glass bowl contains a fresh salad with cherry tomatoes, basil, and other greens. At the bottom, a white plate features a dish of shrimp, possibly fried or sautéed, garnished with fresh herbs and vegetables. A red-handled knife is visible on the right side of the collage.

Hosted by MPCA

# REDUCE YOUR WASTED FOOD CHALLENGE!

Washington County  
begins April 19th

The Minnesota Pollution Control Agency Reduce Your Wasted Food Challenge launches Monday, April 19th. Sign up to get tools to track your wasted food at home, prevent waste (by repurposing leftovers and food scraps), and save money. [Sign-up](#) to receive follow-up information and join the Washington County team.



April 7, 2021

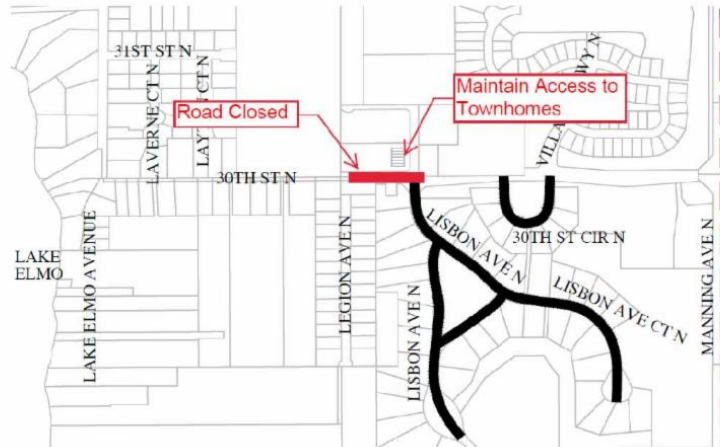
## CONSTRUCTION NOTICE HERITAGE FARMS STREET AND UTILITY IMPROVEMENTS

The City of Lake Elmo is proceeding with the extension of sanitary sewer and reconstruction of public roadways in the Heritage Farms Neighborhood (Lisbon Avenue, Lisbon Avenue Court, and 30<sup>th</sup> Street Circle south of 30<sup>th</sup> Street North). **The 30<sup>th</sup> Street work will begin the week of April 12<sup>th</sup> and requires the complete closure of 30<sup>th</sup> Street North from EAST of Legion Avenue North to EAST of Lisbon Avenue North.** The work is anticipated to take four weeks to complete. A detour route will be posted in advance of construction beginning.

Thank you for your patience and cooperation during this construction project. Please direct questions and concerns during the project to Chad Isakson:

[chad.isakson@FOCUSengineeringinc.com](mailto:chad.isakson@FOCUSengineeringinc.com)

651.300.4283



3880 Laverne Avenue North Suite 100 \* Lake Elmo \* Minnesota \* 55042 \* 651.747.3900



## HIGHWAY 36 AND MANNING AVENUE INTERCHANGE PROJECT

Washington  
County

## New Construction Update Available

Follow the link below to see the latest Construction Update:

[Construction Update: March 2, 2021](#)

To learn more about the project, visit the project website at:

[www.co.washington.mn.us/Manning36Interchange](http://www.co.washington.mn.us/Manning36Interchange)

### County Highway 13 (Ideal Avenue) Phase II

Washington County in partnership with the City of Lake Elmo are providing an online project update on the proposed improvements to Ideal Avenue between County Highway 14 and 44th Street. The project website provides program information and updates.

[Project Website](#)



**ADOPT  
A STORM  
DRAIN**



Storm drains in our city help to protect neighborhoods from flooding, but they also carry litter and polluted runoff from streets and parking lots into nearby lakes and streams.

You can make a difference by volunteering just 15-minutes, twice a month, to keep their nearest storm drain clear of litter, leaves, grass clippings and dirt. To sign up: go to [www.Adopt-a-Drain.org](http://www.Adopt-a-Drain.org) and use the map to find your neighborhood storm drains – then click and sign-up to adopt.

## Xcel Energy providing \$17.5 million to help residential customers behind on electric bills

Xcel Energy will soon begin delivering \$17.5 million in assistance to residential customers who have fallen significantly behind on the electric bills during the COVID-19 recession, which has caused economic hardship for many in our communities. The Minnesota Public Utilities Commission approved the plan this week, which will help customers who may have the most trouble catching up on their bills.

### Temporary Rate Discount for Small and Mid Sized Businesses from Xcel Energy

If your business has experienced a material impact from the pandemic, along with an electric load decrease of 25% or more in electric demand as a direct result of the





COVID-19 pandemic or civil unrest, you may be eligible for a temporary 25% discount on base energy and demand charges.

[Information Available Here](#)

## Sally Manzara Interpretive Nature Center Update

### What Happened to All the Trees in the Park?

Friends of Lake Elmo's Sunfish Lake Park won a grant called "Restoration of Sunfish Lake Park" From the Minnesota Department of Natural Resources Conservation Partners Legacy program to remove buckthorn from 40 acres of Sunfish Lake Park. Work continues on the project on which the City of Lake Elmo, the Minnesota DNR and the Friends are the "Partners".

For background, please visit <https://www.legacy.mn.gov/outdoor-heritage-fund> and <https://www.leg.state.mn.us/lrl/agencies/detail?AgencyID=957>

Buckthorn is a very invasive plant that is detrimental to the park. Over time it takes over large areas and outcompetes native plants that are needed for a healthy ecosystem. Late this Winter, subcontractor Stantec completed "forest mulching" with heavy equipment in the southwest portion of the park. In this process, a track-mounted device ground up whole buckthorn trees (some were 40 years old!) and deadfall tree trunks to make a suitable cover for planting native species that had been displaced by the buckthorn. Click on the buckthorn tab on our website [www.sminc-lake-elmo.org](http://www.sminc-lake-elmo.org) to see it on a map. Much of the buckthorn has been mowed down and mulched. If you take a walk in this part of the park, you will notice that the air is permeated with the unforgettable and invigorating aroma of freshly ground buckthorn. There are a few more areas that will require some hand work. We are looking for volunteers to help with this project in the coming year. Please visit [www.sminc-lake-elmo.org](http://www.sminc-lake-elmo.org) for up-to-date information or call George at 651-757-5610.

Now that the old-growth buckthorn has mostly been removed from the 40-acre restoration area, buckthorn stump sprouts will be sprayed next fall to kill off any new growth. This Spring about 15 acres of the area will be seeded with native woodland grasses. In addition to improving wildlife habitat, the grasses will help provide fuel for a prescribed burn (probably Fall 2022 or Spring 2023). Spot applications of broad-leaf herbicide are also planned for late Spring to help control other broad-leaf weeds (like burdock). A Stantec ecologist will be walking the woodland during the 2021 growing season to monitor recovery of the native ground layer plants and guide weed control efforts. Of course these dates are estimates and the actual times depend on weather and growing conditions.

The Friends recently received a beekeeping license from the City of Lake Elmo for an educational beehive project at the Sally Manzara Interpretive Nature Center. It includes an apiary area surrounded by a fence (electrified at night to keep out hungry bears), and one hive will be set up so you will be able to see the bees at work making honey and more bees.

The Friends are working with the Lake Elmo branch of the Washington County Library to set up a story walk around the nature center, and to have outdoor readings for kids on Friday mornings at 10 AM this Summer. Please check the website for details.







## 3M East Metro Settlement Updates



### Well sampling in the east metro area

If you live in the area that is a priority for testing, you can request that your private well water be tested.

- To see if you live in the priority sampling area, use the [interactive map](#).
- If you live in the priority sampling area, you can request to have your well tested by filling out and [submitting this online form](#).

More information about the priority testing area is available on the [Well sampling in the East Metro Area webpage](#).

### Water Conservation Rebate Program

The City of Lake Elmo, in partnership with the Metropolitan Council, is offering a rebate program for purchases of eligible WaterSense toilets and Smart Irrigation Controllers. Qualifying purchases are eligible for up to a \$200 credit on your water bill.

[Program Details Available Here](#)

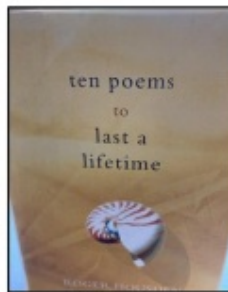
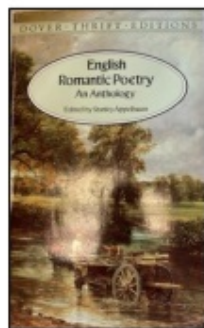
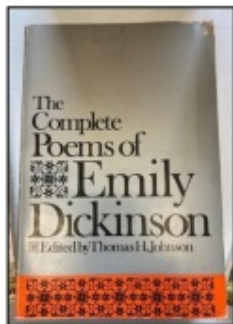




*Roses are Red,  
Violets are Grateful,  
That National Poetry Month  
Happens in April*

**The book sale shelves at  
The Lake Elmo branch of the Washington County Library  
are featuring poetry throughout the month of April**

**3537 Lake Elmo Ave.**



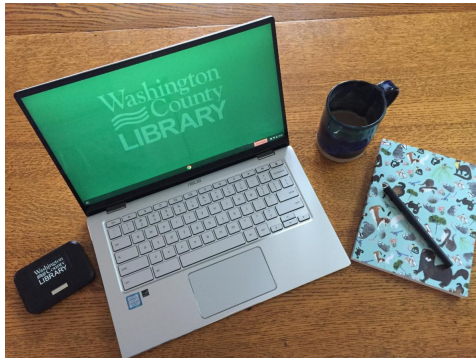
Washington County Library branches  
are open for express service.

Washington  
County  
LIBRARY

- Pick up holds • Browse materials
- Use computers for 1 hour or less
- Schedule curbside pickup



**Washington County Library branches are currently open for Express Service. Visit the library during reduced hours to browse materials, pick up holds, and use a computer for up to one hour. Curbside service is also available for community members who cannot enter our buildings. Learn how we're keeping the library safe for everyone at [WashCoLib.org/COVID19](https://WashCoLib.org/COVID19).**



Washington County Library now has mobile hotspots and Chromebooks available to check out. Get internet at home or on the go (for free!). Devices can be checked out for one month at a time, and can be renewed three times if there are no other holds. You only need a library card registered in Washington County to borrow a device. More information is available at [WashCoLib.org/devices](https://WashCoLib.org/devices).

**Washington County Library Events**