



fresh

Your Weekly Source for City News and Information

Public Meetings Next Week

- City Council Meeting Tuesday, June 1
7:00PM



[City Agendas and Minutes](#)

Visit our website



City Offices are once again be open to the public. City Council, Commission, and Board Meetings are held in the Council Chambers.

Tuesday, June 1 City Council Meeting Agenda



NOTICE OF MEETING
City Council Meeting
Tuesday, June 1, 2021 7:00 P.M.
City of Lake Elmo | 3800 Laverne Avenue North

Agenda

- A. Call to Order/Pledge of Allegiance**
- B. Approval of Agenda**
- C. Approval of Minutes**
 - 1. May 18, 2021
- D. Public Comments/Inquiries**
- E. Presentations**
- F. Consent Agenda**
 - 2. Approve Payment of Disbursements
 - 3. Approve Assistant Fire Chief Appointment
 - 4. Approve Professional Services Agreement for the Planning and Building Department Audit
 - 5. Accept Donation to the Fire Department from Ox & Crow Coffee Roasters – *Resolution 2021-062*
 - 6. Approve Pay Request No. 4 for Production Well No. 5
 - 7. Approve Cooperative Agreement Payment No. 1 for the TH36-Manning Avenue Interchange
- G. Regular Agenda**
 - 8. Public Improvement Hearing. Council Orders the Improvement for the 38th-39th Street Neighborhood Street and Utility Improvements. Accept Bids & Award Contract – *Resolution 2021-063*
 - 9. Accept Bids & Award Contract for the Tamarack Farm Estates Street Improvements – *Resolution 2021-064*
 - 10. Crossroads East (Launch Properties and Crossroads Properties) Preliminary PUD and Preliminary Plat – *Resolution 2021-065*
- H. Council Reports**
- I. Staff Reports and Announcements**
- J. Closed Session**
 - The City Council will go into closed session pursuant to Minnesota Statutes Section 13D.05, subdivision 3 (c)(3) – to consider offers for the sale of the former 3M property on Ideal Avenue, south of CSAH 14 (Tax Parcel ID 16.029.21.24.0002 (portion south of CSAH 14 only)*
- K. Adjourn**

Meeting Materials Can Be Accessed Here

Public Facilities Project Update



- 1 New City Hall Entrance
- 2 New Fire Station Expansion
- 3 Council Chambers/Community room addition
- 4 Parking
- 5 Fire Department Parking
- 6 City Hall/Sheriff
- 7 Laverne Avenue

CITY OF LAKE ELMO COMBINED CITY HALL & PUBLIC SAFETY FACILITY

The new Lake Elmo City Hall / Public Safety Facility combines City Hall staff and functions, the entire Fire Department, and a satellite office for the Washington County Sheriff's department. This co-location involves renovating and expanding the City-owned Brookfield Office building to concentrate civic resources into a single structure at the historic core of the city. In addition, the Public Works facility will also be expanded to accommodate City growth and expanded service needs.



TOTAL ANTICIPATED PROJECT COST: \$14,600,000
DESIGN COMPLETION: Late summer 2021
CONSTRUCTION COMPLETION: Fall of 2022





MEETING THE DEMANDS OF AN EVOLVING FIRE SERVICE

Lake Elmo currently has two fire stations, Fire Station #1 at 3510 Laverne Ave. N. and Fire Station #2 at 4259 Jamaica Ave. N. This project will consolidate these two stations into a single, state-of-the-art station that will meet the needs of our community and firefighters today and into the future. The building is designed to accommodate increasing call volumes, meet the demands for training and to support our evolving role as all hazard responders.

Due to the changing environment of fire department staffing needs and the impacts of that in relation to incident response times and budget responsibility, the fire department is consolidating to a single station which will allow the department the ability to transition to a staffing model that provides 24/7 coverage from the single station. This change requires the updated facilities like staff dorm rooms, day room and kitchen area, fitness room, staff workspaces and offices.

Educational materials provided by the City of Lake Elmo

For more information, visit our website: www.lakeelmo.org or contact Kristina Handt, Administrator at KHandt@lakeelmo.org



The current fire stations are too small to accommodate modern apparatus and equipment and cannot provide adequate health protections for our firefighters.

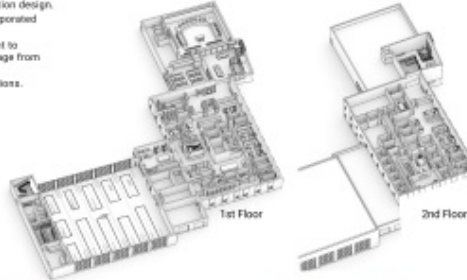
A FUNCTIONAL FIRE STATION

A new, single, state-of-the-art station will meet the needs of our community and firefighters today and into the future. Designed to accommodate our evolving role as all-hazard responders it will:

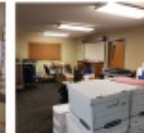
- Modernize our facilities following best practices in station design.
- Enhance firefighter training with training features incorporated into the building.
- The addition of living quarters will allow the department to transition to a staffing model that provides 24/7 coverage from the single station.
- Improve response times and overall department operations.

DESIGNED FOR FIREFIGHTER HEALTH AND SAFETY

- Distinct spaces to properly decontaminate gear and equipment. Focus to reduce staff exposure to firefighting carcinogens and other toxic materials.
- Properly ventilate the apparatus bay to reduce staff exposure to diesel exhaust and other harmful fumes.
- Space that supports the physical and mental health of staff.
- Clear separation between public and private spaces.



Lake Elmo City Hall, built in 1986, is a very small 2,806 SF. There are insufficient offices for all staff members and the restrooms are not accessible. The council chambers are small, do not provide sufficient space for department heads or members of the public, and lack modern technological updates. City staff have long outgrown this building and have since moved into the Brookfield Building located across the parking lot.



The Brookfield Building was purchased by the City in 2018 as a method of maintaining city functions next to the outgrown City Hall at a lower cost alternative to new construction. It was constructed in 1980 and will require a major overhaul to increase its useful life.



AN EXPANDED AND IMPROVED CITY HALL

- Improved service accessibility
- Community room available for public use
- New council chambers with updated technology
- Additional conference rooms
- Co-locate Washington County Sheriff staff
- Office space for growth of city staff
- Accessible restrooms.



Regular updates and documents are available [here](#).

FOOD TRUCK

WEDNESDAYS



11AM-3PM

JUNE 2, 16 & 30

JULY 14 & 28

AUGUST 11 & 25

4PM-8PM

JUNE 9 & 23

JULY 7 & 21

AUGUST 4 & 18



ARBOR GLEN SENIOR LIVING
11020 39TH ST N
LAKE ELMO, MN 55042

VISIT ARBOR GLEN OR THE FIELDS
ON FACEBOOK TO DISCOVER THE
FOOD TRUCK(S) OF THE WEEK!

OR CALL US AT 651-704-1444

WWW.ARBORSENIOR.COM WWW.FIELDSATARBORGLEN.COM



Arbor Glen
Senior Living

Independent Living · Assisted Living · Memory Care



The Fields
at Arbor Glen

Independent Living Apartments & Townhomes

 EBENEZER



FOOD TRUCK FRIDAY!

COMMUNITY EVENT
Fridays from 4:30 - 7:00 pm



Mahtomedi District Education Center

1520 Mahtomedi Ave, Mahtomedi

- April 16 iPierogi + Xssant
- May 21 El Pariente + D and D Goodies Asian flair + KP Concessions Mini Donuts
- June 18 Up in Smoke + KEO's Shave Ice
- July 23 Pig Approved BBQ + Maui Wowie
- August 13 The Big Cheese + Cookies & Cream Scoop Shop

*Yard Games! Outdoor seating only.
Bring a lawn chair or blanket.
Rain or Shine.*

White Bear Area Senior Center

2484 E County Rd F, WBL

- April 23 iPierogi + Droolin' Moose
- May 14 Pig Approved BBQ + Cookies & Cream Scoop Shop
- June 25 KCM Egg Rolls
- July 16 Up in Smoke + KEO's Shave Ice
- August 20 The Big Cheese + Maui Wowie

*Indoor/Outdoor seating.
Or bring a lawn chair.
Rain or Shine*



Grab & Go or Stay & Eat!

*A portion of proceeds are donated back to:
White Bear Lake / Support Senior Programs
Mahtomedi / Support Community Ed Scholarships*

Spring has sprung!

Advice for eco-friendly landscaping, native gardens, & shoreline buffers

☐ "Leaf" some for the bees

In the early days of spring, many pollinators and beneficial insects are still in hibernation. Wait until the daytime temps are consistently above 50°F to cut down stems and rake leaves out of garden beds.

☐ Wait to rake or fertilize your lawn

In the early spring, most lawns are still soft. Raking injures the grass and creates bare patches for weeds to grow. Fertilizing too early encourages the grass to grow tall instead of building healthy roots.

☐ Don't trim oak branches or dig near oaks

April, May and June are high risk months for oak wilt, a fungal disease that kills thousands of oak trees every year.

☐ Plan a native garden

Native plants provide food and habitat for birds and pollinators and don't need irrigation, fertilizer, or lawn chemicals.

Use the "Plant Finder" tool at www.BlueThumb.org to learn which native plants are best suited for your yard - whether it is sunny or shady, wet or dry. The website also has links to native plant retailers.

☐ Attend a free workshop

Native shoreline buffers: April 29, 6-7:15pm
Register online: tinyurl.com/shorelines21

All Things Raingarden: May 11, 6-7:15pm
Register online: tinyurl.com/raingarden21

Blue Thumb - Planting for Clean Water:
• Resilient Yards
• Bee Lawns
• Planting for Clean Water
More dates at bluethumb.org/events

☐ Schedule a free site visit

www.mnccd.org/site-visit-signup-form

A typical site visit lasts 30-60min:
• Begin planning native garden, raingarden, and shoreline planting projects
• Get advice on ways to manage erosion and invasive species
• Learn about available grants



Metropolitan Mosquito Control District trucks, helicopters, and staff will be out in neighborhoods and parks this summer working to reduce mosquito-borne disease and annoyance.



Summer weather in Minnesota means we are starting to see an increase in mosquitoes and the Metropolitan Mosquito Control District (MMCD) will be out conducting surveillance and treatment activities to reduce the risk of disease and annoyance in an environmentally-sensitive manner.

Each year the field staff at MMCD monitors and treats wetlands that breed mosquitoes with a fleet of trucks and helicopters. With many people still working from home during the weekday due to the COVID-19 pandemic, more people may notice MMCD activities in local neighborhoods and parks. At times MMCD employees may need to cross private property for access to check and treat areas for mosquito larvae. MMCD management asks the community to please stay several feet away from field staff and ensure children and pets are kept at a distance. If you have questions about mosquito control activities or concerns about an employee, please call the MMCD front desk at (651) 645-9149 or visit MMCD.org.

Public Works Crews will begin filling potholes on Lake Elmo streets Monday, March 1st. Feel free to report potholes by calling Public Works at 651-747-3940 or City Hall at 651-747-3900. Please slow down when approaching street crews. Thank you for your cooperation.



The City of Lake Elmo is Accepting Applications for the Following Positions:

- Building Official
- Paid on Call Firefighters

Washington County Sheriff Department

If you are planning on being away from home or on vacation please follow some of the tips below to increase the safety and security of your property.

1. Lock all of the doors and windows.
2. Clear out the mailbox and notify the post office to hold your mail until you return. If you are having packages delivered be sure to use the package tracking options and arrange for the package to be picked up by a friend or family member.
3. Keep the yard and/or driveway maintained. Removal of snow from the driveway and walking paths is important.
4. Hide or secure your valuables from view of windows. Using safes is helpful in securing important items.
5. Don't broadcast your plans of being gone on social media. Only notify those who will be helping you in keeping an eye on your residence like a neighbor, family or friends.
6. Get your security system updated, tested and notified of your vacancy. Posting security signage in your yard on residence can help with deterrence of theft and burglary. Many door camera systems can be purchased at a reasonable price with instant notification of activity at your residence while you are away.
7. Adjust your heating settings especially as temperatures can drop significantly this time of year to avoid frozen water lines.
8. Security lighting and timers. The proper lighting on your residence can help to deter theft.
9. Request vacation checks through the Sheriff's Office while you are out of town.

These are just a few quick steps you can take to increase the security of your home while you are away. If you are interested in receiving information on vacation checks call our non-emergency number 651-439-9381



Lake Elmo businesses are invited to sign up to attend National Night Out on Tuesday, August 3rd. This event will bring together old and new residents of Lake Elmo in a community building campaign to promote partnerships with law enforcement and local businesses. If you are interested in participating please fill out the linked form below.

[Sign Up Here](#)



April 7, 2021

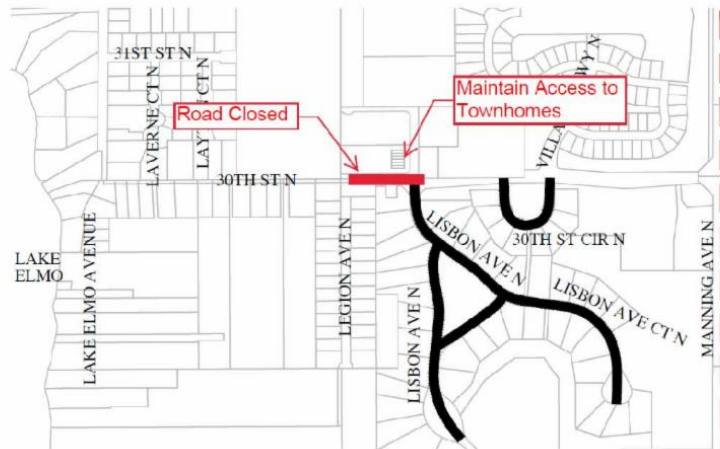
CONSTRUCTION NOTICE HERITAGE FARMS STREET AND UTILITY IMPROVEMENTS

The City of Lake Elmo is proceeding with the extension of sanitary sewer and reconstruction of public roadways in the Heritage Farms Neighborhood (Lisbon Avenue, Lisbon Avenue Court, and 30th Street Circle south of 30th Street North). The 30th Street work will begin the week of April 12th and requires the complete closure of 30th Street North from EAST of Legion Avenue North to EAST of Lisbon Avenue North. The work is anticipated to take four weeks to complete. A detour route will be posted in advance of construction beginning.

Thank you for your patience and cooperation during this construction project. Please direct questions and concerns during the project to Chad Isakson:

chad.isakson@FOCUSengineeringinc.com

651.300.4283



3880 Laverne Avenue North Suite 100 * Lake Elmo * Minnesota * 55042 * 651.747.3900



HIGHWAY 36 AND MANNING AVENUE INTERCHANGE PROJECT

Washington
County

New Construction Update Available

Follow the link below to see the latest Construction Update:

[Construction Update: March 2, 2021](#)

To learn more about the project, visit the project website at:

www.co.washington.mn.us/Manning36Interchange

County Highway 13 (Ideal Avenue) Phase II

Washington County in partnership with the City of Lake Elmo are providing an online project update on the proposed improvements to Ideal Avenue between County Highway 14 and 44th Street. The project website provides program information and updates.

[Project Website](#)



**ADOPT
A STORM
DRAIN**



Storm drains in our city help to protect neighborhoods from flooding, but they also carry litter and polluted runoff from streets and parking lots into nearby lakes and streams.

You can make a difference by volunteering just 15-minutes, twice a month, to keep their nearest storm drain clear of litter, leaves, grass clippings and dirt. To sign up: go to www.Adopt-a-Drain.org and use the map to find your neighborhood storm drains – then click and sign-up to adopt.

Xcel Energy Consumer Update

Xcel Energy residential electric customers who have between \$1,000 to \$4,000 in past due charges are eligible for the Payment Plan Credit Program, which could forgive up to 75% of their past-due balance if they enroll and stay current in a payment plan. Customers can enroll in other payment plans we offer through the My Account feature at www.XcelEnergy.com, or contact customer care at 1-800-895-4999



Sally Manzara Interpretive Nature Center Update

Calling All Volunteers... The Sally Manzara Interpretive Nature Center Is Opening June 1!

We are happy to announce the opening of the Nature Center on June 1 **BUT** we need your help as a greeter/receptionist for a 4-hour shift either morning or afternoon Monday-Sunday.

We will provide a training session in June. There will be additional sessions once a month or an individual session if needed. We request that you are vaccinated.

Can't commit to a regular shift? Would you help as a substitute and/or volunteer for events?

Volunteer with a friend! Know of someone who might like to help?

Thanks to a donation by the Lake Elmo Jaycees to buy a Defibrillator, we will have summer Training Classes for our volunteers.

Please respond to sharon.simpson@sminc-lake-elmo.org with your requested time slot(s), as a substitute, or a volunteer for events.

For Questions see our website www.sminc-lake-elmo.org or Contact Connie Kirk at 651-491-3853.

Help us open the doors!





Well sampling in the east metro area

If you live in the area that is a priority for testing, you can request that your private well water be tested.

- To see if you live in the priority sampling area, use the [interactive map](#).
- If you live in the priority sampling area, you can request to have your well tested by filling out and [submitting this online form](#).

More information about the priority testing area is available on the Well sampling in the [East Metro Area webpage](#).

Water Conservation Rebate Program

The City of Lake Elmo, in partnership with the Metropolitan Council, is offering a rebate program for purchases of eligible WaterSense toilets and Smart Irrigation Controllers. Qualifying purchases are eligible for up to a \$200 credit on your water bill.

[Program Details Available Here](#)





LAKE ELMO FARMER'S MARKET

A 501/C/3 NON-PROFIT

We will open June 19 Saturday 9am to 1pm to Sept 4th

We are located at LE Elementary School

**Please note Date was wrong on last week's issues of
Fresh.**

**Please note our last day of the Market. Please accept
our apologies.**

Thank you

Our Market is Full and we have a great selection.

Visit us at our "Lake Elmo Farmer's Market" Facebook site.

Like us on Facebook "Lake Elmo Farmers Market" and watch for updates!



MAY BOOK SALE LAKE ELMO LIBRARY

Branch of WASHINGTON COUNTY LIBRARY
3537 Lake Elmo Ave.

FEATURING BOOKS ON
GARDENING,
NATURE AND BIRDS
HARDCOVER BOOKS \$2 / PAPERBACKS \$1



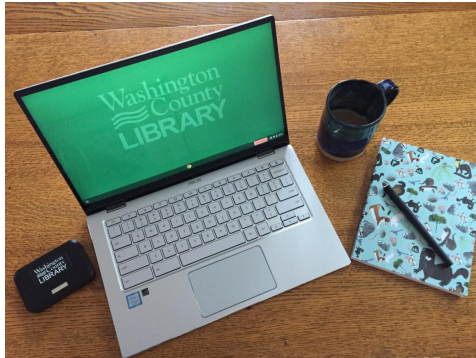
Washington County Library branches
are open for express service.

Washington
County
LIBRARY

- Pick up holds • Browse materials
- Use computers for 1 hour or less
- Schedule curbside pickup



Washington County Library branches are currently open for Express Service. Visit the library during reduced hours to browse materials, pick up holds, and use a computer for up to one hour. Curbside service is also available for community members who cannot enter our buildings. Learn how we're keeping the library safe for everyone at WashCoLib.org/COVID19.



Washington County Library now has mobile hotspots and Chromebooks available to check out. Get internet at home or on the go (for free!). Devices can be checked out for one month at a time, and can be renewed three times if there are no other holds. You only need a library card registered in Washington County to borrow a device. More information is available at WashCoLib.org/devices.

Washington County Library Events