



fresh

Your Weekly Source for City News and Information

Public Meetings Next Week

- Planning Commission Meeting Monday, May 10 7:00PM
- City Council Workshop Tuesday, May 11 6:30PM
- City Center Open House Wednesday, May 12 5-7:00PM at City Hall and Fire Station #1



Visit our website

[City Agendas and Minutes](#)



City Offices are once again be open to the public. City Council, Commission, and Board Meetings are held in the Council Chambers.

Tuesday, May 4 City Council Meeting Summary

At their regular meeting on Tuesday, May 4th the Lake Elmo City Council:

- Approved a Front Yard Setback Variance at 11075 32nd Street North
- Approved a Setback Variance at 8950 Lake Jane Trail
- Approved the Feasibility Report and Called for an Improvement Hearing for the 38th-39th Street Neighborhood Street and Utility Improvements
- Directed Staff to Coordinate Interviews of Proposing Consultants for the Audit of the Building and Planning Departments
- Approved the Lake Elmo Airport Zoning Ordinance Amendment

On the consent agenda the Council:

- Approved Payment of Disbursements
- Approved RLS/Minor Subdivision for 10920 32nd Street
- Approved the Purchase Agreement for a Portion of 10920 32nd Street
- Approved the Contract for the 50th Street PRV Valve Removal and Linden Ave Storm Sewer Replacement
- Approved Hiring Part Time Firefighters
- Approved an Appointment to Parks Commission
- Approved Low Voltage/AV Agreement with FinePoint Technology
- Approved 3918 Ironwood Trail Abatement
- Approved 8615.5 Eagle Point Boulevard Abatement
- Approved 8860 42nd Street N Abatement

Monday, May 10 Planning Commission Agenda



3800 Laverne Avenue North
Lake Elmo, MN 55042

(651) 747-3900
www.lakeelmo.org

NOTICE OF MEETING

The City of Lake Elmo
Planning Commission will conduct a meeting on
Monday May 10, 2021
at 7:00 p.m.

AGENDA

Please note:

Note: Social Distancing protocols will be in place in the City Council Chambers due to the Corona Virus pandemic.

1. Pledge of Allegiance
2. Approve Agenda
3. Approve Minutes
 - a. April 26, 2021
4. Public Hearings
 - a. Launch Properties/Crossroads Properties PUD Preliminary Plan for a Light Industrial Business Park (Crossroads East First Addition) – Hudson Boulevard and Lake Elmo Avenue
5. New/Unfinished Business
 - a. None
6. Communications/Updates
 - a. City Council Update
 - 05-04-2021 Meeting – 2 setback variances, Wallace RLS, Airport Zoning Ordinance
 - 05-18-2021 Meeting - ??
 - b. Staff Updates
 - c. Upcoming PC Meetings:
 1. May 24, 2021
 2. June 14, 2021
7. Adjourn

***Note: Every effort will be made to accommodate person or persons that need special considerations to attend this meeting due to a health condition or disability. Please contact the Lake Elmo City Clerk if you are in need of special accommodations.

Meeting Materials Can Be Accessed Here

Tuesday, May 11 City Council Workshop Agenda



*Our Mission is to Provide Quality Public
Services in a Fiscally Responsible Manner
While Preserving the City's Open Space
Character*

NOTICE OF MEETING

**City Council Workshop
3800 Laverne Avenue North
May 11, 2021
6:30 PM**

AGENDA

- | | |
|---|----------------|
| I. Call to Order | 6:30 PM |
| II. Operational Audit Consultant Interviews | 6:30 PM |
| III. Financing of New City Facilities | 7:30 PM |
| IV. MPCA Water Extension Grants | 8:00 PM |
| V. Amended DNR Water Appropriations Permit 1961-1031 | 8:30 PM |
| VI. Items for Future Work Session Agenda | 9:00 PM |
| A. CSAH 13/Ideal Ave Update | |
| B. Converting 32nd St to One-Way | |
| C. Commercial Assessments for OV 5 and 6 | |
| D. American Rescue Plan Funding Project Discussion (tentative) | |
| E. Conceptual Drinking Water Plan (tentative) | |
| VII. Adjourn | 9:00 PM |

Meeting Materials Can Be Accessed Here

Public Facilities Project Update

**An open house to introduce the City Center will
be held Wednesday, May 12th 5-7PM at City Hall
and Fire Station #1**



- 1 New City Hall Entrance
- 2 New Fire Station Expansion
- 3 Council Chambers/Community room addition
- 4 Parking
- 5 Fire Department Parking
- 6 City Hall/Sheriff
- 7 Laverne Avenue

LEO A DALY

CITY OF LAKE ELMO COMBINED CITY HALL & PUBLIC SAFETY FACILITY

The new Lake Elmo City Hall / Public Safety Facility combines City Hall staff and functions, the entire Fire Department, and a satellite office for the Washington County Sheriff's department. This co-location involves renovating and expanding the City-owned Brookfield Office building to concentrate civic resources into a single structure at the historic core of the city. In addition, the Public Works facility will also be expanded to accommodate City growth and expanded service needs.



TOTAL ANTICIPATED PROJECT COST: \$14,600,000
DESIGN COMPLETION: Late summer 2021
CONSTRUCTION COMPLETION: Fall of 2022





MEETING THE DEMANDS OF AN EVOLVING FIRE SERVICE

Lake Elmo currently has two fire stations, Fire Station #1 at 3510 Laverne Ave. N. and Fire Station #2 at 4259 Jamaica Ave. N. This project will consolidate these two stations into a single, state of the art station that will meet the needs of our community and firefighters today and into the future. The building is designed to accommodate increasing call volumes, meet the demands for training and to support our evolving role as all hazard responders.

Due to the changing environment of fire department staffing needs and the impacts of that in relation to incident response times and budget responsibility, the fire department is consolidating to a single station which will allow the department the ability to transition to a staffing model that provides 24/7 coverage from the single station. This change requires the updated facilities like staff dorm rooms, day room and kitchen area, fitness room, staff workspaces and offices.

Educational materials provided by the City of Lake Elmo

For more information, visit our website: www.lakeelmo.org or contact Kristina Handt, Administrator at KHandt@lakeelmo.org



The current fire stations are too small to accommodate modern apparatus and equipment and cannot provide adequate health protections for our firefighters.

A FUNCTIONAL FIRE STATION

A new, single, state-of-the-art station will meet the needs of our community and firefighters today and into the future. Designed to accommodate our evolving role as all-hazard responders it will:

- Modernize our facilities following best practices in station design.
- Enhance firefighter training with training features incorporated into the building.
- The addition of living quarters will allow the department to transition to a staffing model that provides 24/7 coverage from the single station.
- Improve response times and overall department operations.

DESIGNED FOR FIREFIGHTER HEALTH AND SAFETY

- Distinct spaces to properly decontaminate gear and equipment. Focus to reduce staff exposure to firefighting carcinogens and other toxic materials.
- Properly ventilate the apparatus bay to reduce staff exposure to diesel exhaust and other harmful fumes.
- Space that supports the physical and mental health of staff.
- Clear separation between public and private spaces.

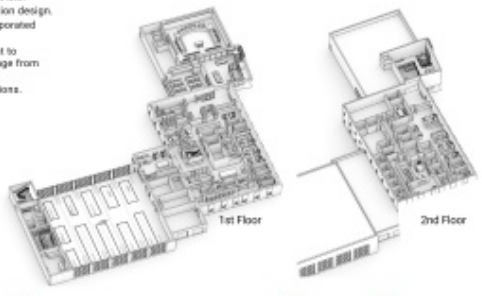


Lake Elmo City Hall, built in 1986, is a very small 2,806 SF. There are insufficient offices for all staff members and the restrooms are not accessible. The council chambers are small, do not provide sufficient space for department heads or members of the public, and lack modern technological updates. City staff have long outgrown this building and have since moved into the Brookfield Building located across the parking lot.

The Brookfield Building was purchased by the City in 2018 as a method of maintaining city functions next to the outgrowth City Hall at a lower cost alternative to new construction. It was constructed in 1980 and will require a major overhaul to increase its useful life.

AN EXPANDED AND IMPROVED CITY HALL

- Improved service accessibility
- Community room available for public use
- New council chambers with updated technology
- Additional conference rooms
- Co-locate Washington County Sheriff staff
- Office space for growth of city staff
- Accessible restrooms.



Regular updates and documents are available [here](#).

The Lake Elmo Fire Department received and has activated a brand new Tender Truck for emergency response.



Spring has sprung!

Advice for eco-friendly landscaping, native gardens, & shoreline buffers

☐ "Leaf" some for the bees

In the early days of spring, many pollinators and beneficial insects are still in hibernation. Wait until the daytime temps are consistently above 50°F to cut down stems and rake leaves out of garden beds.

☐ Wait to rake or fertilize your lawn

In the early spring, most lawns are still soft. Raking injures the grass and creates bare patches for weeds to grow. Fertilizing too early encourages the grass to grow tall instead of building healthy roots.

☐ Don't trim oak branches or dig near oaks

April, May and June are high risk months for oak wilt, a fungal disease that kills thousands of oak trees every year.

☐ Plan a native garden

Native plants provide food and habitat for birds and pollinators and don't need irrigation, fertilizer, or lawn chemicals.

Use the "Plant Finder" tool at www.BlueThumb.org to learn which native plants are best suited for your yard - whether it is sunny or shady, wet or dry. The website also has links to native plant retailers.

☐ Attend a free workshop

Native shoreline buffers: April 29, 6-7:15pm
Register online: tinyurl.com/shorelines21

All Things Raingarden: May 11, 6-7:15pm
Register online: tinyurl.com/raingarden21

Blue Thumb - Planting for Clean Water:
• Resilient Yards
• Bee Lawns
• Planting for Clean Water
More dates at bluethumb.org/events

☐ Schedule a free site visit

www.mnwcd.org/site-visit-signup-form

A typical site visit lasts 30-60min:
• Begin planning native garden, raingarden, and shoreline planting projects
• Get advice on ways to manage erosion and invasive species
• Learn about available grants

East Metro Water Resource Education Programs

- [Raingarden Workshop](#) – May 11, 6-7:15pm
- [2021 Workshops for the Public](#)

Public Works Crews will begin filling potholes on Lake Elmo streets Monday, March 1st. Feel free to report potholes by calling Public Works at 651-747-3940 or City Hall at 651-747-3900. Please slow down when approaching street crews. Thank you for your cooperation.





**WE ARE
HIRING!**

The City of Lake Elmo is Accepting Applications for the Following Positions:

- Building Official
- Public Works Seasonal Employees
- Paid on Call Firefighters

[Visit our website](#)

Washington County Sheriff Department

If you are planning on being away from home or on vacation please follow some of the tips below to increase the safety and security of your property.

1. Lock all of the doors and windows.
2. Clear out the mailbox and notify the post office to hold your mail until you return. If you are having packages delivered be sure to use the package tracking options and arrange for the package to be picked up by a friend or family member.
3. Keep the yard and/or driveway maintained. Removal of snow from the driveway and walking paths is important.
4. Hide or secure your valuables from view of windows. Using safes is helpful in securing important items.
5. Don't broadcast your plans of being gone on social media. Only notify those who will be helping you in keeping an eye on your residence like a neighbor, family or friends.
6. Get your security system updated, tested and notified of your vacancy. Posting security signage in your yard on residence can help with deterrence of theft and burglary. Many door camera systems can be purchased at a reasonable price with instant notification of activity at your residence while you are away.
7. Adjust your heating settings especially as temperatures can drop significantly this time of year to avoid frozen water lines.
8. Security lighting and timers. The proper lighting on your residence can help to deter theft.
9. Request vacation checks through the Sheriff's Office while you are out of town.

These are just a few quick steps you can take to increase the security of your home while you are away. If you are interested in receiving information on vacation checks call our non-emergency number 651-439-9381



Hosted by MPCA

REDUCE YOUR WASTED FOOD CHALLENGE!

Washington County
begins April 19th

The Minnesota Pollution Control Agency Reduce Your Wasted Food Challenge launches Monday, April 19th. Sign up to get tools to track your wasted food at home, prevent waste (by repurposing leftovers and food scraps), and save money. [Sign-up](#) to receive follow-up information and join the Washington County team.



Lake Elmo businesses are invited to sign up to attend National Night Out on Tuesday, August 3rd. This event will bring together old and new residents of Lake Elmo in a community building campaign to promote partnerships with law enforcement and local businesses. If you are interested in participating please fill out the linked form below.

[Sign Up Here](#)



April 7, 2021

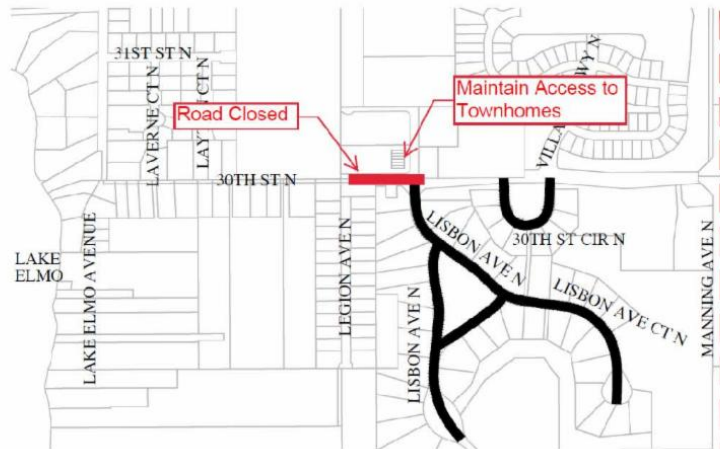
CONSTRUCTION NOTICE HERITAGE FARMS STREET AND UTILITY IMPROVEMENTS

The City of Lake Elmo is proceeding with the extension of sanitary sewer and reconstruction of public roadways in the Heritage Farms Neighborhood (Lisbon Avenue, Lisbon Avenue Court, and 30th Street Circle south of 30th Street North). **The 30th Street work will begin the week of April 12th and requires the complete closure of 30th Street North from EAST of Legion Avenue North to EAST of Lisbon Avenue North.** The work is anticipated to take four weeks to complete. A detour route will be posted in advance of construction beginning.

Thank you for your patience and cooperation during this construction project. Please direct questions and concerns during the project to Chad Isakson:

chad.isakson@FOCUSengineeringinc.com

651.300.4283



3880 Laverne Avenue North Suite 100 * Lake Elmo * Minnesota * 55042 * 651.747.3900



HIGHWAY 36 AND MANNING AVENUE INTERCHANGE PROJECT

Washington
County

New Construction Update Available

Follow the link below to see the latest Construction Update:

[Construction Update: March 2, 2021](#)

To learn more about the project, visit the project website at:

www.co.washington.mn.us/Manning36Interchange

County Highway 13 (Ideal Avenue) Phase II

Washington County in partnership with the City of Lake Elmo are providing an online project update on the proposed improvements to Ideal Avenue between County Highway 14 and 44th Street. The project website provides program information and updates.

[Project Website](#)



**ADOPT
A STORM
DRAIN**



Storm drains in our city help to protect neighborhoods from flooding, but they also carry litter and polluted runoff from streets and parking lots into nearby lakes and streams.

You can make a difference by volunteering just 15-minutes, twice a month, to keep their nearest storm drain clear of litter, leaves, grass clippings and dirt. To sign up: go to www.Adopt-a-Drain.org and use the map to find your neighborhood storm drains – then click and sign-up to adopt.

Xcel Energy providing \$17.5 million to help residential customers behind on electric bills

Xcel Energy will soon begin delivering \$17.5 million in assistance to residential customers who have fallen significantly behind on the electric bills during the COVID-19 recession, which has caused economic hardship for many in our communities. The Minnesota Public Utilities Commission approved the plan this week, which will help customers who may have the most trouble catching up on their bills.

Temporary Rate Discount for Small and Mid Sized Businesses from Xcel Energy

If your business has experienced a material impact from the pandemic, along with an electric load decrease of 25% or more in electric demand as a direct result of the



COVID-19 pandemic or civil unrest, you may be eligible for a temporary 25% discount on base energy and demand charges.

[Information Available Here](#)

Sally Manzara Interpretive Nature Center Update

What Happened to All the Trees in the Park?

Friends of Lake Elmo's Sunfish Lake Park won a grant called "Restoration of Sunfish Lake Park" From the Minnesota Department of Natural Resources Conservation Partners Legacy program to remove buckthorn from 40 acres of Sunfish Lake Park. Work continues on the project on which the City of Lake Elmo, the Minnesota DNR and the Friends are the "Partners".

For background, please visit <https://www.legacy.mn.gov/outdoor-heritage-fund> and <https://www.leg.state.mn.us/lrl/agencies/detail?AgencyID=957>

Buckthorn is a very invasive plant that is detrimental to the park. Over time it takes over large areas and outcompetes native plants that are needed for a healthy ecosystem. Late this Winter, subcontractor Stantec completed "forest mulching" with heavy equipment in the southwest portion of the park. In this process, a track-mounted device ground up whole buckthorn trees (some were 40 years old!) and deadfall tree trunks to make a suitable cover for planting native species that had been displaced by the buckthorn. Click on the buckthorn tab on our website www.sminc-lake-elmo.org to see it on a map. Much of the buckthorn has been mowed down and mulched. If you take a walk in this part of the park, you will notice that the air is permeated with the unforgettable and invigorating aroma of freshly ground buckthorn. There are a few more areas that will require some hand work. We are looking for volunteers to help with this project in the coming year. Please visit www.sminc-lake-elmo.org for up-to-date information or call George at 651-757-5610.

Now that the old-growth buckthorn has mostly been removed from the 40-acre restoration area, buckthorn stump sprouts will be sprayed next fall to kill off any new growth. This Spring about 15 acres of the area will be seeded with native woodland grasses. In addition to improving wildlife habitat, the grasses will help provide fuel for a prescribed burn (probably Fall 2022 or Spring 2023). Spot applications of broad-leaf herbicide are also planned for late Spring to help control other broad-leaf weeds (like burdock). A Stantec ecologist will be walking the woodland during the 2021 growing season to monitor recovery of the native ground layer plants and guide weed control efforts. Of course these dates are estimates and the actual times depend on weather and growing conditions.

The Friends recently received a beekeeping license from the City of Lake Elmo for an educational beehive project at the Sally Manzara Interpretive Nature Center. It includes an apiary area surrounded by a fence (electrified at night to keep out hungry bears), and one hive will be set up so you will be able to see the bees at work making honey and more bees.

The Friends are working with the Lake Elmo branch of the Washington County Library to set up a story walk around the nature center, and to have outdoor readings for kids on Friday mornings at 10 AM this Summer. Please check the website for details.

The Friends of Lake Elmo's Sunfish Lake Park are excited about the result of our latest cooperation with the Washington County Library! Andrew, Rebecca, Teresa and Olivia from the Library (left to right in pic) installed story boards on our holders along the trail, and video-recorded the story reading, and other activities around the Sally Manzara Interpretive Nature Center (including beekeeping progress). Andrew even suited up to visit the bees "up close and personal". You may come any time the Park is open, walk the trail around the nature center, and read the story "One Dog Canoe" by Mary Casanova.



Well sampling in the east metro area

If you live in the area that is a priority for testing, you can request that your private well water be tested.

- To see if you live in the priority sampling area, use the [interactive map](#).
- If you live in the priority sampling area, you can request to have your well tested by filling out and [submitting this online form](#).

More information about the priority testing area is available on the [Well sampling in the East Metro Area webpage](#).

Water Conservation Rebate Program

The City of Lake Elmo, in partnership with the Metropolitan Council, is offering a rebate program for purchases of eligible WaterSense toilets and Smart Irrigation Controllers. Qualifying purchases are eligible for up to a \$200 credit on your water bill.



[Program Details Available Here](#)



**CLEAN
WATER
LAND &
LEGACY
AMENDMENT**



LAKE ELMO FARMER'S MARKET

A 501/C/3 NON-PROFIT

We will open June 19 Saturday 9am to 1pm to Sept 4th

We are located at LE Elementary School

**Please note Date was wrong on last week's issues of
Fresh.**

**Please note our last day of the Market. Please accept
our apologies.**

Thank you

Our Market is Full and we have a great selection.

Visit us at our "Lake Elmo Farmer's Market" Facebook site.

Like us on Facebook "Lake Elmo Farmers Market" and watch for updates!



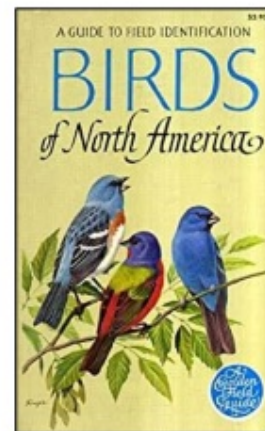
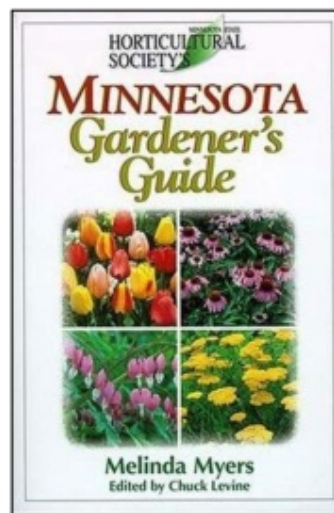
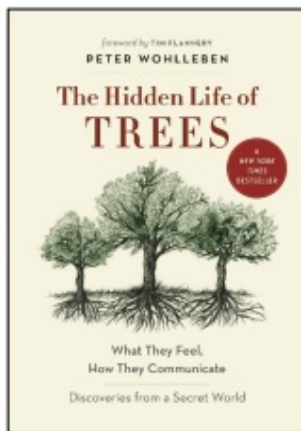
MAY BOOK SALE

LAKE ELMO LIBRARY

Branch of WASHINGTON COUNTY LIBRARY
3537 Lake Elmo Ave.

FEATURING BOOKS ON
GARDENING,
NATURE AND BIRDS

HARDCOVER BOOKS \$2 / PAPERBACKS \$1



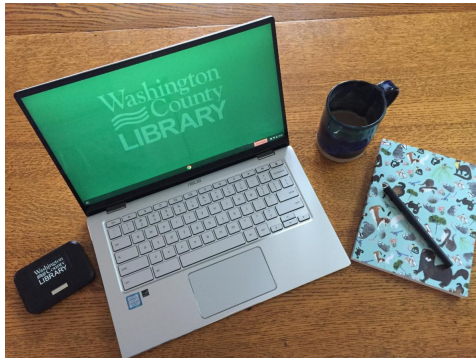
Washington County Library branches
are open for express service.

Washington
County
LIBRARY

- Pick up holds • Browse materials
- Use computers for 1 hour or less
- Schedule curbside pickup



Washington County Library branches are currently open for Express Service. Visit the library during reduced hours to browse materials, pick up holds, and use a computer for up to one hour. Curbside service is also available for community members who cannot enter our buildings. Learn how we're keeping the library safe for everyone at WashCoLib.org/COVID19.



Washington County Library now has mobile hotspots and Chromebooks available to check out. Get internet at home or on the go (for free!). Devices can be checked out for one month at a time, and can be renewed three times if there are no other holds. You only need a library card registered in Washington County to borrow a device. More information is available at WashCoLib.org/devices.

Washington County Library Events