



# fresh

Your Weekly Source for City News and Information

## Public Meetings Next Week:

- Parks Commission Meeting Monday, June 17th, 6:30 p.m.
- City Council Meeting Tuesday, June 18th, 7:00 p.m.



Visit our website

Join us on Nextdoor



## NOTICE OF MEETING

City Council Meeting

Tuesday, June 18, 2024 7:00 P.M.

City of Lake Elmo | 3880 Laverne Avenue North

### AGENDA

**A. Call to Order/Pledge of Allegiance**

**B. Approval of Agenda**

**C. Approval of Minutes**

1. May 21, 2024; June 4, 2024

**D. Public Comments/Inquiries**

**E. Presentations**

**F. Consent Agenda**

2. Approve Payment of Disbursements
3. Approve DPS Lake Elmo 3<sup>rd</sup> Addition Final Plat Extension - *Resolution 2024-073*
4. Approve MnDOT Limited Use Permit for Hudson Boulevard Trail – *Resolution 2024-079*
5. Accept Bids and Award Contract for the 2024 Seal Coat Project – *Resolution 2024-075*
6. Approve Pay Request No. 1 for 2024 Street and Utility Project
7. Approve Pay Request No. 8 for the Tapestry Sanitary Sewer Extension
8. Accept Second Donation to the Fire Department from Don Raleigh Memorial Fund – *Resolution 2024-076*
9. Accept CenterPoint Energy Community Safety Grant – *Resolution 2024-077*
10. Approve City Hall Room Use Policy
11. Approve 2024 Summer Newsletter

**G. Regular Agenda**

12. Public Improvement Hearing: Order the Improvements, Accept Bids and Award Contract for the Hudson Boulevard Segment A Improvements – *Resolution 2024-078*
13. Audit Presentation

**H. Council Reports**

**I. Staff Reports**

**J. Adjourn**

---



Our Mission is to Provide Quality Public Services in a Fiscally Responsible Manner in Partnership with our Community.

**NOTICE OF MEETING**

**City of Lake Elmo Parks Commission  
3880 Laverne Avenue North  
June 17, 2024  
6:30 p.m.**

**AGENDA**

1. Call to Order
2. Pledge of Allegiance
3. Approve Agenda
4. Approve Minutes
  - a) May 20<sup>th</sup>, 2024
5. Public Comment
6. Sand Volleyball Courts
7. Lions Multi-use Court
8. Communications
9. Adjourn

**Full meeting packets and meeting minutes can be accessed here:**  
[Agendas and Minutes](#)



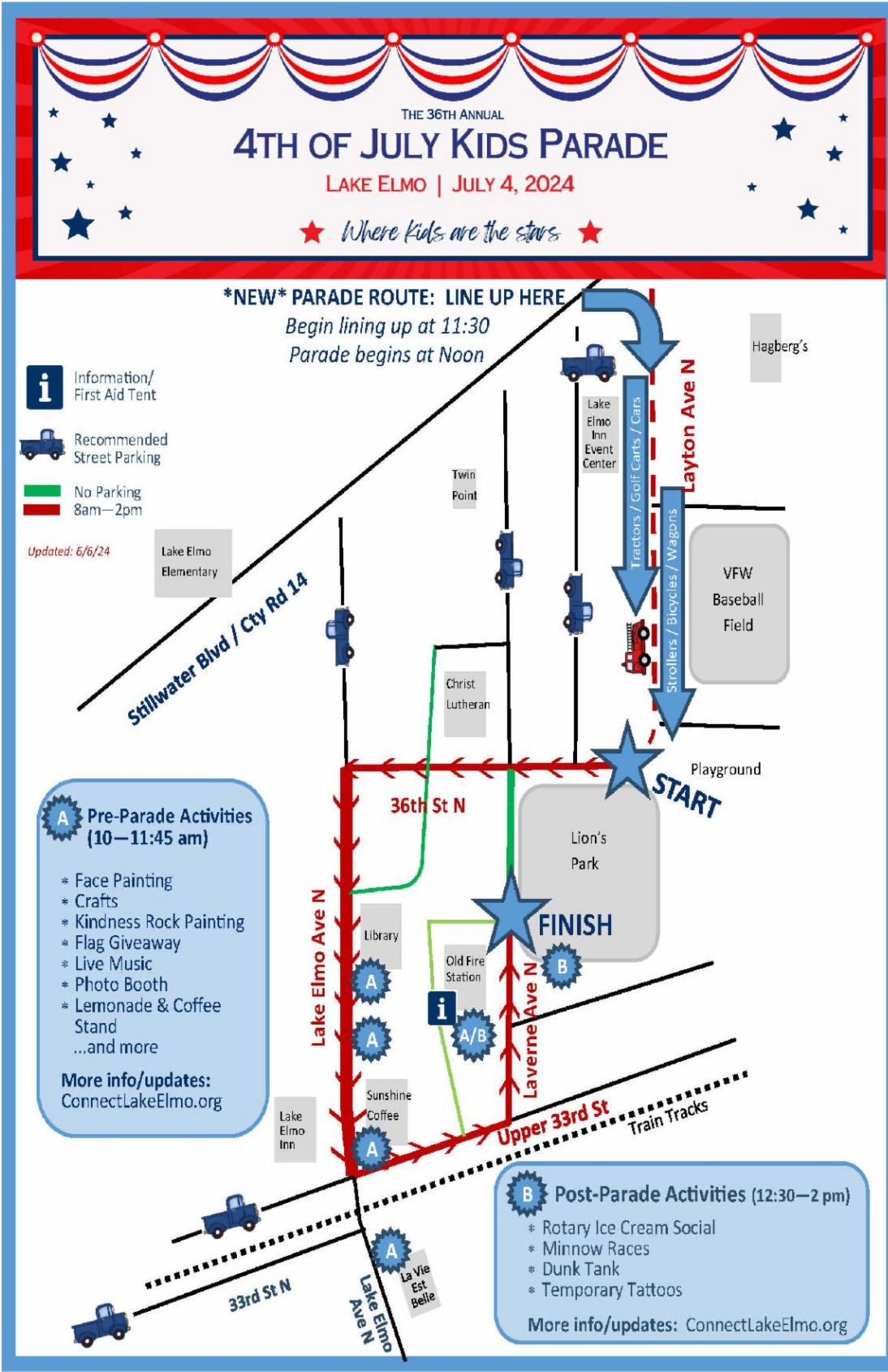
**A Word from Mayor Cadenhead**

Civic engagement is really important to me because it is the cornerstone of building community. I am so proud of the service organizations, projects, and community events that make Lake Elmo a great place to live. A few years ago, the Connect Lake Elmo organization formed to offer a centralized calendar of events in Lake Elmo, provide a list of businesses, and head up select community events. This group of volunteers is committed to the organization's mission and works hard to support our community and other organizations.

The annual Lake Elmo 4th of July Kids Parade is coming up in about 3 weeks and has nearly doubled in size each year. After 36 years, this special tradition that started as a grass-roots parade with a handful of Lake Elmo children, has required additional planning to ensure safety and a successful event. [Connect Lake Elmo](#) has partnered with The City of Lake Elmo - Government, Lake Elmo Fire Department, The Washington County Sheriff's Office, The [Lake Elmo Rotary Club](#), and other local organizations/businesses to plan another great event. Thank you to the current Board and all previous volunteers who have made this parade possible.

**\*Get Involved\***

**Please consider volunteering for a few hours on the 4th of July to help with the various activities and stations. Visit <https://connectlakeelmo.org/4th-of-july> and click on the volunteer opportunities link. Together, we will continue to make Lake Elmo a wonderful place to live.**



### 4th of July Kids Parade

July 4th is less than one month away and the Connect Lake Elmo organization has been busy planning a great celebration in partnership with The City of Lake Elmo, The Washington County Sheriff's Office, The Lake Elmo Fire Department, The Lake Elmo Rotary, and members of the community.

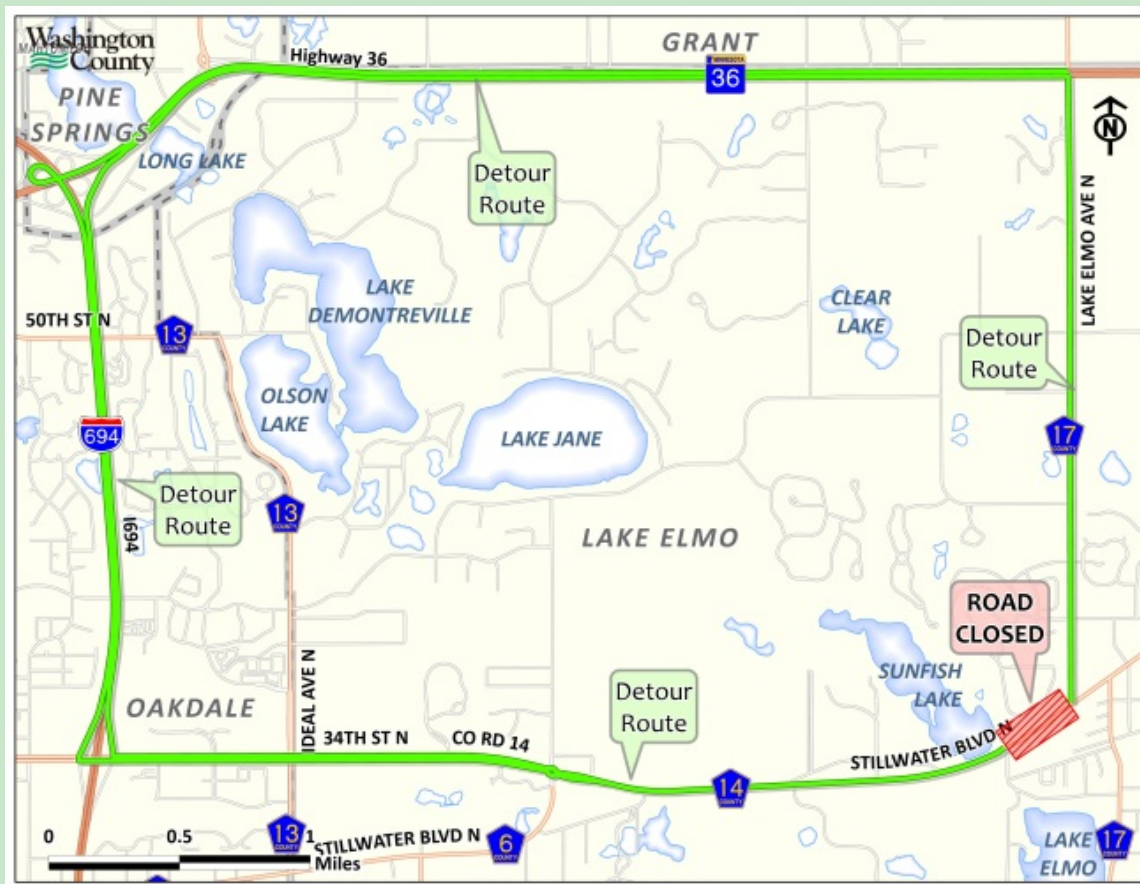
**\*IMPORTANT\* ROUTE CHANGE!** The Kids Parade will now start north of Lion's Park on Layton Ave (just off of Cty Rd 14 near the Lake Elmo Inn Event Center). The Lake Elmo

Kids Parade has grown significantly over the past few years and this adjusted route will allow for more condensed traffic management while keeping the route a similar length. We can also avoid trains passing through the middle of the parade!

Check out [www.connectlakeelmo.org](http://www.connectlakeelmo.org) for up-to-date information on the parade route, parking, opportunities to volunteer/donate, and all of the fun activities on July 4th. Please spread the word with your friends and neighbors.

### **Notice of Detour**

Washington County has approved a permit request for connection of city utilities affecting a section of County Highway 14 (Stillwater Blvd) in the City of Lake Elmo. This work will require County Highway 14 to be temporarily closed to all traffic between the intersection of CSAH 17 (Lake Elmo Ave N) and just west of Klondike Ave N beginning Wednesday, June 12th, at 7am. The closure is anticipated to last approximately two weeks. Please refer to the map below for more information.



# GRAND OPENING EVENT

CITY OF LAKE ELMO DOG PARK



Bring your dog and join City Staff for the OFFICIAL OPENING

## ELMO'S PUP PARK



- SATURDAY, JUNE 15<sup>th</sup> 8am-10am
- 4259 JAMACA AVE N.

Come enjoy light refreshments and tour the new park!

### IRRIGATION REMINDERS

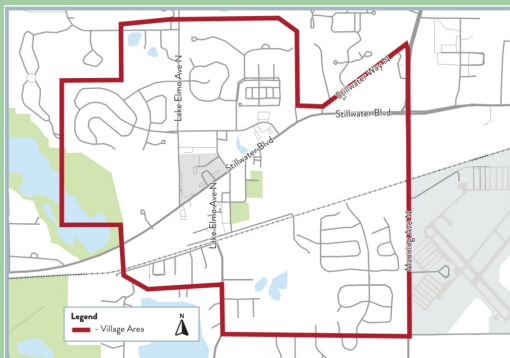
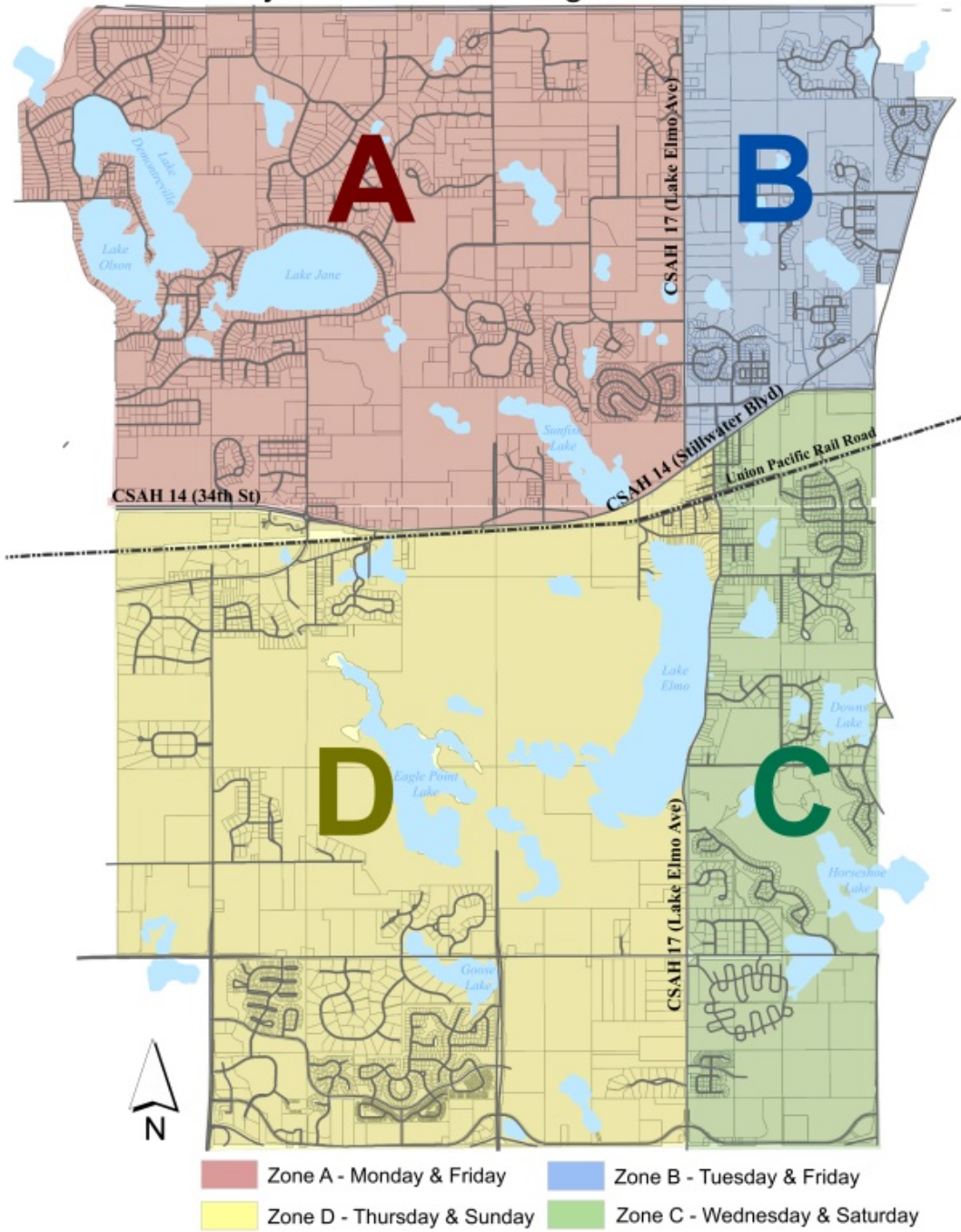
As we head into the irrigation season, please remember the city ordinance allows properties connected to the city water system to irrigate 2 days per week (according to the city irrigation zone map). Irrigation is restricted from the hours of 5am-5pm. Hand watering is allowed at any time and new sod waivers are available if needed.

You can further reduce your water usage by using a smart irrigation controller device. For more information on how to obtain a smart controller or more information on watering restrictions, please visit the city website. [Irrigation](#).

Irrigation enforcement has begun.

Thank you for doing your part to insure we all have sufficient drinking water and fire protection!

# City of Lake Elmo Irrigation Zones



## Lake Elmo Village Vision Study

The City of Lake Elmo has initiated a review of the historic Village Area and we're looking for your feedback! Please complete the survey at the following link to tell us more about your thoughts on the future of this area. The survey will be open until June 28:

<https://tinyurl.com/LEVillageSurvey>



## LAKE ELMO FARMER'S MARKET

# Farmer's Market Season Starts THIS SATURDAY!

Market runs 9am to 1 pm on Saturdays.

- Market will be open rain or shine unless inclement weather of high winds or lighting. Market starts June 15 to August 31<sup>st</sup>.
- Staff will be present on all Market days. Any concerns or questions please seek staff out. We will be in center of Market at a table.
- We will have two food trucks this year.
- Parking on West side of L.E. School only due to increase number of vendors.
- We will be selling our Lake Elmo Farmer's Market Cook Book that has Hand written recipe's from vendors and visitors.
- Last year we had 7,190 Visitors to the Market!! The previous year was 5811, we are growing.

As we grow as a community, and a Market, we are seeking volunteers to be an active part in our Market. Please give us a call at 651-261-4493.

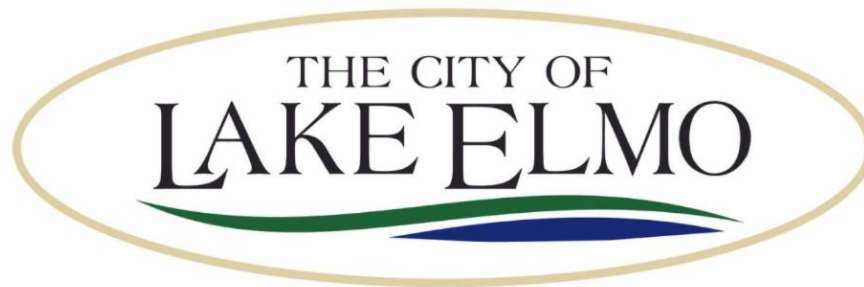
*Business and Community Working Together/ Lake Elmo Farmer's Market is a 501c3*

---



# We're Hiring

## Planning Assistant



**Help shape the future of Lake Elmo!**

**In this position you will:**

- Interpret and enforce municipal codes
- Conduct plan reviews for building permits
- Assist with zoning administration

**Learn more and apply at:**



[www.lakeelmo.gov](http://www.lakeelmo.gov)



## Metro - I-94 Oakdale to St. Croix: 2022-2024 construction

### Traffic impacts

I-94 Oakdale to Lakeland project area map: [View full-size map](#)

All traffic impacts are tentative and weather-dependent.

### Current

#### Road closures

7 p.m. Wed, May 1 through mid-June

- Hwy 95/St. Croix Trail is closed under the I-94 bridge
  - NB detour: [St. Croix Trail, EB I-94, Carmichael Rd., WB I-94 and Hwy 95 north \(PNG\)](#)

- SB detour: [Hwy 95 north, WB I-94, Manning Ave., EB I-94 and St. Croix Trail \(PNG\)](#)

### Lane closures

Through late June

- I-94 is reduced to two lanes in both directions between Hwy 95/St. Croix Trail and the River Bridge

Through mid-July

- EB I-94 is reduced to two lanes between Century Ave. and Woodbury Dr.
- WB I-94 is reduced to two lanes between Woodbury Dr. and Century Ave.

### Ramp closures

7 p.m. Fri, May 3 through early June

- The ramp from SB Hwy 35 to WB I-94 is closed
  - Detour: SB Hwy 35, EB I-94, Carmichael Rd. and WB I-94

5 a.m. Thu, May 2 through mid-June

- The ramp from WB I-94 to Radio Dr./Inwood Ave. N. is closed
  - Detour: WB I-94, Keats Ave. N./Woodbury Dr., Hudson Rd. and Radio Dr./Inwood Ave. N.
- The ramp from Radio Dr./Inwood Ave. N. to WB I-94 is closed
  - Detour: Radio Dr./Inwood Ave. N., Hudson Blvd., Keats Ave. N./Woodbury Dr. and WB I-94

### Ramp closures

Through October

- The ramp from 10th St. N. to NB I-694 is closed
  - Detour: [10th St. N., Inwood Ave. N., Stillwater Blvd., Ideal Ave. N., 34th St. N. and NB I-694 \(PNG\)](#)
- The ramp from Century Ave. to EB I-94 is closed
  - Detour: [Century Ave., Hudson Rd., McKnight Rd., Burns Ave. and EB I-94 \(PNG\)](#)

Through mid-July


- The following ramps are closed:
  - WB I-94 to SB I-494
    - Detour: [WB I-94, NB I-694, 10th St. N. and SB I-494 \(PNG\)](#)
  - NB I-494 to WB I-94
    - Detour: [NB I-494, 10th St. N., SB I-694 and WB I-94 \(PNG\)](#)

## **More about this project**


We will be resurfacing the pavement and making other improvements to I-94 between Hwy 120/Century Ave. and the St. Croix River through fall 2024. The work will improve safety, traffic flow and ride smoothness.

For more information, including construction schedule and upcoming traffic impacts, visit the [I-94 Oakdale to St. Croix project webpage](#). If you have questions, please [contact the project team](#).

---

 **Payment Portal**  
Make a Payment, enroll in Auto-Pay & e-Billing, view your payment and bill history, and more!

[Go to Payment Portal](#)

 **One-Time Payment**  
No time to login? Make a quick, one-time payment here.

[One-Time Payment](#)

### **Attention – NEW Utility Billing Payment Portal**

We have moved to an intuitive new Utility Billing Portal called Paya. Grab your City of Lake Elmo utility account number and proceed to Paya at the link below to register, manage your account, set up autopay, or make payments.

<https://lakeelmo.payacp.com/home>

If you need assistance, reach out to us at [RNess@LakeElmo.org](mailto:RNess@LakeElmo.org) or call 651-747-3906.

**Note:** The former platform, PSN, will be deactivated prior to the next bills in July 2024. Make the change now to avoid late payments and penalties.



### **Tablyn and Pebble Park Courts are Finished!!!**

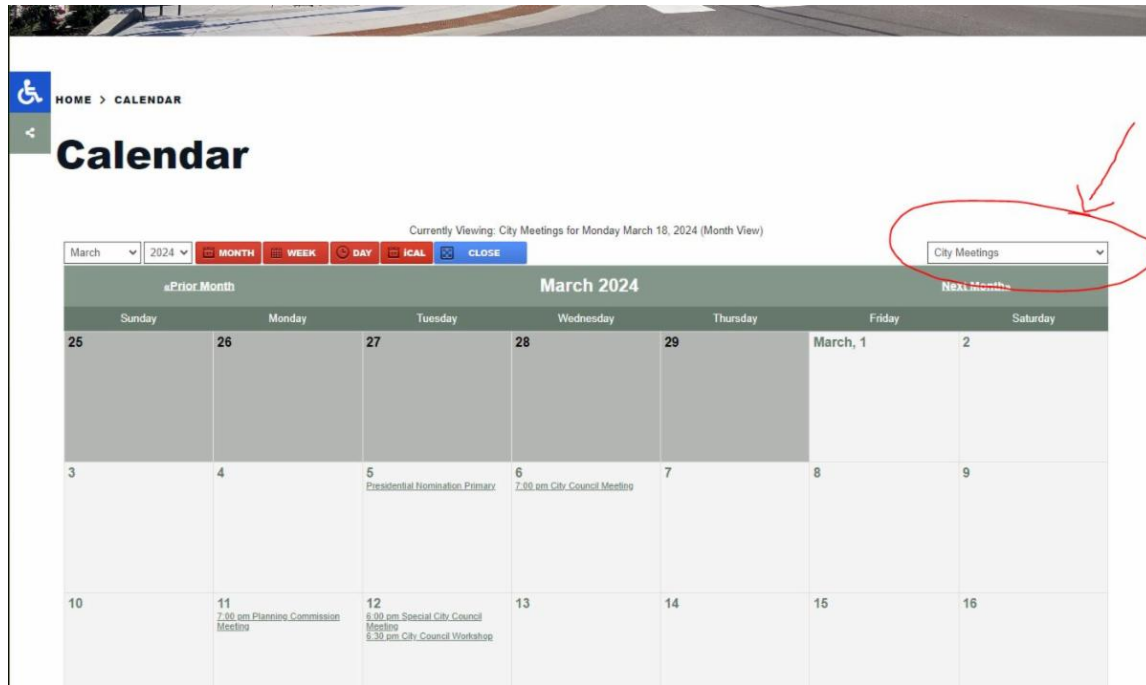
The reconstruction of two separate playing surfaces are finally complete and available for use. The city has added 4 pickle ball and 1 tennis court at our Tablyn Park location and added up to 6 potential pickle ball courts and 1 tennis court at Pebble Park. Courts can be reserved for daily use up to 3 hours, please refer to the City's web site for more information.

**\*Looking to make a donation or have a suggestion for a better park experience? Please contact the PW department or fill out a request form on the City's Park web page.\***

**City park reservations are now listed on our website**

Please visit [www.lakeelmo.org](http://www.lakeelmo.org). City Parks that have rentals for amenities may be found on the home page of the website. Once on the home page, click on VIEW ALL EVENTS above the calendar. City Meetings is the default calendar listed. Toggle between parks with the drop down box on the top right corner of the calendar. Please see screenshot below for details.

Lake Elmo Park Reserve is a County Park. Please contact the county at 651.430.8370 for reservation information.



UMN EXTENSION WASHINGTON COUNTY MASTER GARDENERS



## Garden Tour

July 20 | 9-4 | 7 gardens  
Oakdale, Lake Elmo, Stillwater, White Bear Lake  
Tix: \$15 in advance, \$20 that day  
order: [z.umn.edu/WCMGTour](http://z.umn.edu/WCMGTour)  
more info at: [washingtoncountymg.org](http://washingtoncountymg.org)



The City of Lake Elmo was awarded a grant in 2024 from Living Healthy Washington County. This state-based program works at the local level to support healthier communities by expanding opportunities for active living, healthy eating, well-being and commercial tobacco-free living. This grant allowed the city to install two additional bike repair stations in the community after survey results from 2023 showed biking is the second highest means to visit a city park within Lake Elmo. These bike stations were placed near the trail entrance at Demontreville Wildlife Park and Reid Park.

## Exterior storage, parking and maintenance

As part of our ongoing efforts to maintain the appeal and safety of the City of Lake Elmo, city staff would like to remind residents about regulations pertaining to exterior storage, parking, and upkeep of properties. The way we manage our spaces is important for maintaining our city's quintessential character.



**Exterior Storage:** All refuse, rubbish, or garbage (as defined in LEC 1.08) shall be kept in an enclosed building or properly contained in a closed container designed for the purposes. The accumulation, storing, or keeping of old machinery, wrecked or inoperable vehicles or household appliances, and unlicensed vehicles and other junk or debris is prohibited.

**Parking:** Unlicensed passenger vehicles and trucks shall not be parked in residential districts for a period exceeding seven days.

**Parking Design and Maintenance:** Surfacing and drainage. All off-street parking areas shall be surfaced as follows: Single-family and two-family dwellings shall provide a durable surface with suitable drainage. In all residential, commercial, and mixed-use districts, all areas intended to be utilized for parking space for five or more vehicles and associated driveways shall be paved with a durable surface, including, but not limited to, hot asphalt, bituminous or concrete.

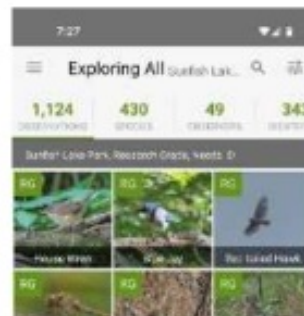
The Sally Manzara Interpretive Nature Center is open every day  
Visit <https://sminc-lake-elmo.org/> for details.



The Sally Manzara Interpretive Nature Center in Lake Elmo's Sunfish Lake Park is operated by a non-profit organization for the benefit of the entire community. We offer programs and events for people of all ages and have "adopted" the Park in the City's program. This work is all funded by donations. Thank you for your support!

Here are some things happening at the SMINC:

- The next installment of our Nature for Life series will be about Nature & Technology. We often think of these two things as being opposites, but there are many ways that technology can help us better interact with nature—think of all those Northern Lights pictures that looked better than just viewing with the naked eye. We'll have a few of our favorite volunteers and nature educators here to talk about some apps, like iNaturalist and Merlin, that can help you better make sense of what you see on your hikes!



Nature & Technology will take place on Saturday, June 22 at 10 a.m. Tickets are \$10, and preregistration is required. To sign up, or check out our other Nature for Life offerings, go to:

<https://www.eventbrite.com/e/856201380377?aff=oddtcreator>

- Summer is here! We had our first summer camp this week, a Little Explorers camp for pre-K kiddos and their families. Our first 4-day camp, "Sunfish Explorers: Camp Out," for campers aged 6 to 8, is coming up, June 17 to 20 (Mon to Thurs), 9 a.m. to noon each day. We've got lots of other options for camps, from single-day camps to 4-day camps, for age ranges from pre-K to 10 year olds. Check out our summer camp offerings here:  
<https://www.eventbrite.com/cc/sminc-summer-camps-3007279?utm-campaign=social&utm-content=creatorshare&utm-medium=discovery&utm-term=odclsxcollection&utm-source=cp&aff=escb>

# Sally Manzara Interpretive Nature Center

# SUMMER CAMPS 2024



Sally Manzara Interpretive Nature Center is located next to Sunfish Lake Park in Lake Elmo, Minnesota. The park offers 284 acres of natural area and over 8 miles of trails through forest, wetlands, and prairie.

## GET YOUR KIDS OUTDOORS EXPLORING NATURE THIS SUMMER!

### Little Explorers

**Mondays from 9:30am-11:00am (Newborns to 5-year-olds)**  
Where families can come together and give the little ones their first experiences in nature. The first hour is structured activity based on the day's theme. The last 30 minutes we encourage open play, to give families an opportunity to explore on their own. **Adults must stay with their children at all times.**

**Camp Out** – June 10  
**Flower Power** – June 24  
**Into the Woods** – July 1  
**Pollinators** – July 15  
**Bird Mania** – July 29  
**Bugs!** – August 12

### Sunfish Explorers

**Monday - Thursday from 9am-12 noon**  
Our four-day camps will encourage and educate the youth of tomorrow about the beauty and importance of a healthy outdoors. Activities include hikes, crafts, games and of course a little education about the outdoors!

**Outdoor Adventures** - June 17-20  
**Bees & Butterflies** – July 8-11  
**Birds!** - July 22-25  
**Bugs!** – August 5-8  
**Nature's Kaleidoscope**– Aug. 19-22

### Wonder Wednesdays

**Wednesdays from 9am-2pm**  
Our one-day, fun-filled, Wonder Wednesdays let kids explore the beautiful outdoor setting and learn about their surrounding environment. It is run by experienced instructors and the days include interpretive education, games, crafts to bring home, free play and hikes.

**Earth Elements** – June 26  
**Nature Appreciation** – July 17  
**Nature Theater & Puppetry**– July 31  
**Prairie Explorers** – August 14

Camp information and registration: <https://sminc-lake-elmo.org/summer-camp-registration/>  
For more information email [camps@sminc-lake-elmo.org](mailto:camps@sminc-lake-elmo.org)



Sally Manzara Interpretive Nature Center is operated by Friends of Lake Elmo's Sunfish Lake Park, a 501(c)(3) nonprofit.  
**651-408-2838 | e-mail: [info@sminc-lake-elmo.org](mailto:info@sminc-lake-elmo.org) | [sminc-lake-elmo.org](http://sminc-lake-elmo.org)**



Do you love fresh, organic veggies? Do you want to support your local food system? [Cimarron Community Farm's](#) 2024 Summer CSA program is open now and a perfect way for your family to eat fresh

all season long!

- 16 weeks of fresh, local, organic produce (mid-June to September)
- \$530 for a summer share with flexible payment options
- On-farm pick-up, Wednesdays 4pm-7pm
- A typical box may include fresh herbs, tomatoes, zucchini, carrots, broccoli, lettuce, kale, eggplant, onions, and more

Sign up now to access the best produce in town!

[cimarroncommunityfarm.com](http://cimarroncommunityfarm.com) |

[cimarroncommunityfarmMN@gmail.com](mailto:cimarroncommunityfarmMN@gmail.com) | 952-607-0157

# SCHOOL SUPPLY SWAP

WEDNESDAY, AUGUST 7  
4 – 6 P.M.

ENVIRONMENTAL CENTER  
WOODBURY



## DONATIONS NEEDED!

Washington County is collecting gently used school supplies for a school supply swap in August. Donate gently used items at the Environmental Center, Washington County Libraries, and Public Health & Environment office locations through August 2.



Scan to find a donation site!  
[WashCoRecycles.com/Reuse](http://WashCoRecycles.com/Reuse)

## ACCEPTED ITEMS

*Donations should be gently used items that students would normally discard at the end of the school year.*

- Pencils/pens/markers/crayons
- Notebooks
- Lined or graphing paper
- Calculators (working)
- Rulers/protractors/compasses
- Scissors
- Erasers
- Glue sticks
- Watercolor paints
- Pencil cases
- Pencil sharpeners
- Backpacks (working zippers, no rips/tears/stains)
- 3-ring binders (1-inch only)
- Pocket folders

[WashCoRecycles.com/Reuse](http://WashCoRecycles.com/Reuse)  
651-275-7475

Washington  
County





*Emerald Ash Borer*

### Lake Elmo Park Reserve

Washington County is continuing ash tree removal within Lake Elmo Park Reserve in response to the emerald ash borer. Starting Nov. 15 through March 31, 2024, ash trees will be removed near trails and in natural areas of the park. These removals will help minimize risk to the public from falling trees and will also reduce fuel loads that can increase fire risk within the park.

To complete the work, a contractor will be using equipment to cut and haul the trees to staging areas, before chipping and removing debris from the site. Once work commences, ski trails on the south side of Lake Elmo and the snowmobile trail will be closed. Only ash trees will be removed, and new bareroot trees will be planted in suitable areas in the spring of 2024.

See the county website at [www.co.washington.mn.us](#) to view a map of ash trees. Green dots are trees to be removed, and purple dots are ash trees surveyed in summer of 2023. If time and weather conditions allow, staff will also remove dead or dying ash trees along the property boundaries.

The Minnesota Department of Agriculture website has more information about the emerald ash borer at [www.mda.state.mn.us/eab](http://www.mda.state.mn.us/eab)

## Recycling at Home

Empty and rinse all containers

**Glass**  
Bottles & Jars



**Metal**  
Food & Beverage Cans



**Plastic**  
Bottles & Containers



**Cartons**



**Paper & Cardboard**



**When in doubt, keep it out.** Putting these items in your recycling cart does more harm than good.

**NO!**

**Do Not Bag**  
Recyclables



**No Plastic**  
Bags or Wrap



**No Tangles**  
(No hoses, wires,  
or string lights)



**No Shredded**  
Paper



[www.co.washington.mn.us/publichealth](http://www.co.washington.mn.us/publichealth) | 651-430-6655



City of Lake Elmo | 3880 Laverne Avenue North | Lake Elmo, MN 55042 US

[Unsubscribe](#) | [Update Profile](#) | [Constant Contact Data Notice](#)



Try email marketing for free today!