



fresh

Your Weekly Source for City News and Information

Public Meetings Next Week

- Planning Commission Monday, February 14 - Canceled
- EDA Meeting Tuesday, February 15 - 6:00PM
- City Council Meeting Tuesday, February 15- 7:00PM



[City Agendas and Minutes](#)

Visit our website



February 15 EDA Meeting Agenda



The Lake Elmo Economic Development Authority (EDA) is committed to preserving and enhancing our community by creating an attractive business climate and listening to businesses and residents to prepare for the economy of tomorrow.

NOTICE OF MEETING

**City of Lake Elmo Economic Development Authority
Meeting
3800 Laverne Avenue North
Tuesday, February 15, 2022 6:00 PM**

AGENDA

- | | |
|---|------------------|
| A. Call to Order/Roll Call-Introductions | 6:00 p.m. |
| B. Election of Officers | 6:00 p.m. |
| 1. President | |
| 2. Vice President | |
| 3. Secretary | |
| 4. Treasurer | |
| 5. Assistant Treasurer | |
| C. October 28, 2021 Minutes | 6:10p.m. |
| D. Business Retention and Expansion Survey | 6:15 p.m. |
| E. Lake Elmo EDA 2022-2024 Work Plan | 6:35 p.m. |
| F. 2022 Meeting Schedule | 6:45 p.m. |
| G. Future Agenda Items/Reports | 6:50 p.m. |
| H. Adjourn | 6:55 p.m. |

[Meeting Materials Can Be Accessed Here](#)

February 15 City Council Meeting Agenda



*Our Mission is to Provide Quality Public Services in a
Fiscally Responsible Manner in Partnership with our Community.*

NOTICE OF MEETING

City Council Meeting

Tuesday, February 15, 2022 7:00 P.M.

City of Lake Elmo | 3800 Laverne Avenue North

AGENDA

A. Call to Order/Pledge of Allegiance

B. Approval of Agenda

C. Approval of Minutes

1. February 2, 2022

D. Public Comments/Inquiries

E. Presentations

F. Consent Agenda

2. Approve Payment of Disbursements and Payroll
3. Approve Resolution Supporting Housing and Local Decision Making Authority-Resolution No 2022-016
4. Approve Purchase of Turnout Gear
5. Approve Cable Caster Agreement
6. Approve Purchase of Public Works Pick up Truck
7. Approve Public Works Bulk Water Fill Station
8. Approve Concurrence to Award a Construction Contract for the CSAH 13 Phase 2 Improvements-Resolution No 2022-018

G. Regular Agenda

9. Variance for setback at 3200 Lake Elmo Ave-Resolution No 2022-019
10. Resolution Receiving Feasibility Report, Calling Hearing on Improvement, Approving Plans and Specifications, and Ordering Advertisement for Bids for the Parkview-Cardinal Neighborhood Street and Utility Improvements-Resolution No 2022-017
11. Select Consultant for Classification and Compensation Study

H. Council Reports

I. Staff Reports

J. Adjourn

Meeting Materials Can Be Accessed Here

The City of Lake Elmo is on Nextdoor!

In an effort to reach as much of the community as possible we've joined Nextdoor. We will use our public agency page to post news and important updates for residents.

[Find us here!](#)



Stormwater Utility Fee

The City has received several questions from residents regarding the stormwater utility billing that went out last Friday and what it is for. The revenue received from your stormwater utility fee is used for preparation of a Surface Water Management Plan, maintenance of existing ditches, culverts, ponds and storm sewers, capital improvements in developed areas, equipment, planning, inventories and water quality improvements including weed control.

Beginning in April, water and sewer customers will receive quarterly bills for the stormwater utility fee.



REMINDER: Winter Parking Ordinance In Effect

Winter parking ordinance prohibits parking on Lake Elmo Streets from Nov. 1 through March 31 between 2:00 AM and 7:00 AM.

Public Works can't clear the roadways with cars blocking their paths!





Eliminating Obstructed Fire Hydrants



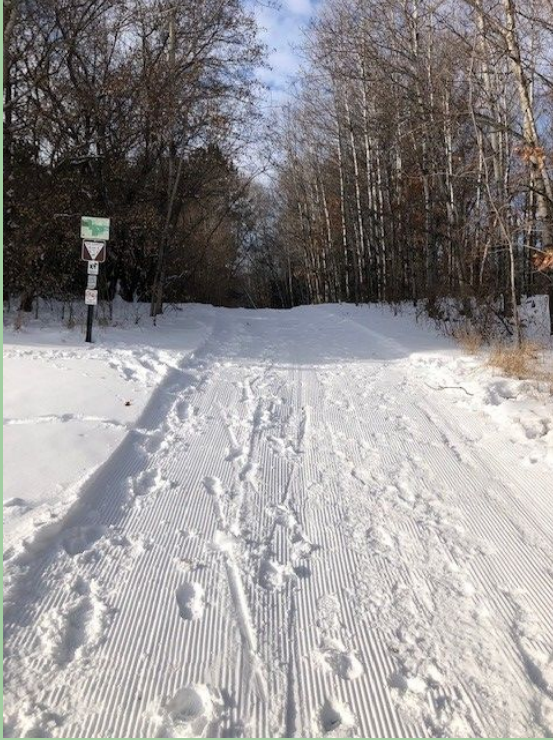
To help protect the community, residents are being asked to help keep fire hydrants clear and accessible. Having timely and efficient access to a water supply is critically important for fighting fires. The longer it takes to access the supply, the quicker a fire can spread and the more dangerous it will be for responders. Obstructions cause unnecessary delays when firefighters are forced to take time to locate hidden hydrants, slowing their response.

Many hydrants are hidden by weeds, shrubbery, flowerbeds, posts, fences, snow and other obstructions. Residents are urged to check to see if they have a hydrant in their front yard or somewhere on their property and to “adopt” it, keeping it clear. A path from the street and an area three feet around the hydrant will allow quick access for firefighters and for public works staff completing maintenance.

Please help protect the city, its people and their homes.

Lake Elmo Public Works

Trails are groomed for winter fun in Sunfish Lake Park and Reid Park



The City of Lake Elmo is Seeking Applicants for Multiple Committees

The City of Lake Elmo is seeking interested residents to serve on two committees:

- EDA
- Planning Commission

[More Information Available Here](#)



FOR IMMEDIATE RELEASE

01/26/2022

For more information contact:

Molly Just, Planning Director

City of Lake Elmo

Phone: (651) 747-3912

Email: mjust@lakeelmo.org

Cyphers Logistic Park Draft Alternative Urban Areawide Review Available for Public Comment

LAKE ELMO, Minn. – The City of Lake Elmo has prepared a Draft Alternative Urban Areawide Review (AUAR) and Mitigation Plan to understand the environmental implications of a future redevelopment of a 190-acre area consisting of three parcels located east of I-694, bordered on the west by Ideal Avenue N and Stillwater Boulevard N to the south. Four development scenarios are proposed for evaluation in the AUAR:

Development Scenario 1: Development Scenario 1 land uses includes business park, mixed-use business park, commercial, existing public works, park, ponding, and right-of-way.

Development Scenario 2: Development Scenario 2 land uses includes business park, mixed-use business park, commercial, low density residential, medium density residential, existing public works, park, ponding, and right-of-way.

Development Scenario 3: Development Scenario 3 land uses includes business park, commercial, low density residential, public works, park, ponding, and right-of-way.

Development Scenario 4: Development Scenario 4 land uses includes agricultural, rural residential, public works, and business park. This scenario is consistent with the adopted Comprehensive Plan.

The Draft AUAR and Mitigation Plan can be accessed electronically on City's website at www.lakeelmo.org/

Written comments on the Draft AUAR and Mitigation Plan will be accepted until March 3, 2022 at 4:00 p.m. and should be directed to:

Molly Just, Planning Director
City of Lake Elmo
3800 Laverne Ave N
Lake Elmo, MN 55042

Where & How to Place Your Garbage Can

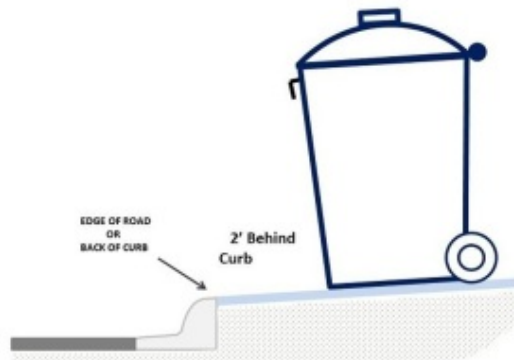
Garbage and recycling containers need to be placed off the street per MN State Statute 160.2715 (A)(2)

Please Do not place garbage cans in the street. We realize this area is an enticing location to place garbage cans, but it creates a hazard as it narrows the travel lanes creating safety concerns. The cans could get hit by vehicles or create visibility issues. Most garbage trucks are equipped with a hydraulic extending arm that grasps garbage cans. It is recommended that garbage cans be placed at least 3 to 5 feet off the edge of pavement, into your driveway, so they are out of the way of traffic and maintenance vehicles.



Retrieve your garbage cans soon after collection. Garbage cans often sit at the roadside on collection day until the evening. Empty cans are vulnerable to winds and road maintenance operations and could cause a hazard if knocked into the roadway. Prompt removal of empty containers is recommended.

These tips can make garbage collection day safer and easier for all of us. The City of Lake Elmo thanks you for taking time to read this message!





The City of Lake Elmo is Accepting Applications for the following positions:

- Assistant Public Works Director
- Public Works Seasonal
- Cable Caster

[Visit our website for information and application materials.](#)



LAKE ELMO FARMER'S MARKET

Seeking YOUTH Vendors for the 2022 Season

Market runs weekly beginning Saturday June 18th – September 3rd from 9-1pm

The market is offering an amazing opportunity for Youth in the community this summer, a booth dedicated to Youth Vendors/ Entrepreneurs!

Youth vendors may include: youth organizations (ie: Scouts), fundraising efforts (ie: PTO), youth farmers, young entrepreneurs looking for an opportunity within the community to sell their amazing creations/inventions, etc.

If you or someone you know is interested, please contact Jill (Market Manager) for more information about specific guidelines for youth vendors, application process and to answer any additional questions.

651-261-4493 or pottingshedpottery@gmail.com

See YOU at the market!

(in less than 5 months)

Like us on Facebook @Lake Elmo Farmers Market and watch for updates!

Business and Community Working Together/ Lake Elmo Farmer's Market is a 501c3

Washington County Sheriff's Update

Nothing can ruin the Christmas spirit faster than becoming the victim of a crime. The Washington County Sheriff's Office has had an uptick in crime in several new developments. All the crimes have been opportunity crimes, meaning it has been easy for criminals. Leaving keys or key fobs in the car, valuables and money in unlocked vehicles is too tempting for the criminals. All the vehicles that were stolen from our city had the keys left in them. No one is hot wiring vehicles or punching ignitions. The break in to vehicles are also not occurring by breaking windows. All

vehicles have been left unlocked. Think of everything in your car in terms of cash value. If you would not leave the equivalent in cash out, do not leave it out in the form you bought it.

This holiday season, the Sheriff's office would like to remind all residents of the following holiday crime prevention tips:

- Lock your vehicle
- Do not leave keys/key fobs in the vehicle
- Do not leave valuables in plain view
- Park in well-lit areas
- Do not leave any personal identifying papers in your vehicle
- Do not leave a vehicle running while unattended.
- Shut and secure garage doors when not in use.

Please contact the Washington County Sheriff's Office if you see a suspicious vehicle or person in your neighborhood. You can call 911 or the non-emergency number, 651-439-9381.

SGT. Erickson

Be SALT SMART!



WATER SOFTENERS

Water softeners account for up to 65% of the chloride that is discharged from municipal wastewater treatment plants statewide.

Hard water is pervasive in our state; thus, water softeners are a common fixture in many Minnesota homes. Conventional water softeners treat hard water by exchanging the hard minerals with sodium and potassium ions. When the system is 'full,' it resets or regenerates by sending a pulse of salt water through the system. Municipal wastewater treatment plants do NOT treat for chloride, meaning that salty water is then discharged to our waterways.

How do I reduce my chloride footprint?

Do you need to soften your water? If you live in a city, check to see whether your water utility softens the water before distribution. This eliminates or decreases the need for a water softener.

Optimize your water softener settings: If you have an older water softener, regeneration generally happens on a timer versus by water use – extending the timing between regeneration cycles will reduce the amount of wastewater produced.

Replace your water softener: Newer water softener models regenerate based on water use versus a timer, using less salt and water.

Don't soften ALL your water: Only soften the water from your hot water taps versus cold water drinking taps.

Reduce your overall water use: Cutting back lessens demand for softened water and conserves our water resources!

**Using more than 1
40-lb bag of salt a
month?**

Check with a water
professional to
optimize softener
efficiency!

DO YOU HAVE A
**LEAKY
TOILET?**



FIND OUT:

1. Add a drop of food coloring to the tank.
2. Wait 10 minutes.
3. If you see the color in your toilet bowl, you have a leak!

**Water Conservation
Rebate Program**

The City of Lake Elmo, in partnership with the Metropolitan Council, is offering a rebate program for purchases of eligible WaterSense toilets and Smart Irrigation Controllers. Qualifying purchases are eligible for up to a \$200 credit on your water bill.

[Program Details Available Here](#)





Winter 2022 at Lake Elmo Library

Please visit Lake Elmo Library this season for library materials and programs to help you through the long winter nights. While you are here, don't forget to peek at our special window display, a Winter Fairy Village, part of an effort to "Light Up Lake Elmo" by local residents.

We welcome our community families to visit the library for in-person Storytime on most Fridays at 10:30 a.m. Visit washcolib.org/storytime for the online calendar and for links to virtual storytimes and other resources.

Adults are welcome to take part in the Winter Reads program in January and February. Participate by submitting book reviews for a chance to win prizes! Visit the washcolib.org/winter-reads webpage for information and related events.

We look forward to your visit to Lake Elmo Library!

Hours:

Monday 10-4

Tuesday, Wednesday, Thursday 12-8

Friday 10-4

Saturday 10-2

Lake Elmo Library
3537 Lake Elmo Avenue N
Lake Elmo MN 55042
651-275-8515
washcolib.org

Washington County Library Events

The Sally Manzara Interpretive nature Center is now open every day - visit www.sminc-lake-elmo.org for details

Our Summer Camp Registration is open, for details visit

<https://sminc-lake-elmo.org/summer-camp-registration-2022/>

or contact camps@sminc-lake-elmo.org for questions

Saturday Morning Family Nature Exploration Programs:



Sally Manzara Interpretive Nature Center (SMINC)

Family Nature Exploration Saturdays 2022

10-11am



Suggested \$5 donation/family at the door will help support our programming.

Most events are held outdoors, please dress appropriately for the weather.

The Sally Manzara Interpretive Nature Center is located in Sunfish Lake Park in Lake Elmo, MN

<https://sminc-lake-elmo.org/>

www.facebook.com/sunfishlakepark



February 5

Snow Drawing

Create community snow art with your feet. Bring boots or

snowshoes. All Ages.



February 12

Winter Yoga & Cocoa

Complete a self guided winter yoga circuit

outdoors, then treat yourself to some hot cocoa. All ages.



February 19

Build a Snow Shelter

Rescheduled from January.

Learn how to

build an emergency shelter or quinzee with Linda Kuzma. All ages.



February 26

Learn to Be a Weather Tracker

Learn what it takes to be a weather tracker with meteorologist Dave Carlson. All ages.

New!

Summer Camps

Get your kids outdoors in nature this summer! Learn more about our summer camps for ages 5-14 at:



<https://sminc-lake-elmo.org/summer-camps-2022/>

Public Facilities Project Update

- At the November 3 City Council Meeting the City Council awarded bids for the new City Center and Public Works Addition.
- At the January 4, 2022 City Council Meeting the City Council awarded bids for painting at the new City Center

Regular updates and documents are available [here](#).



- 1 New City Hall Entrance
- 2 New Fire Station Expansion
- 3 Council Chambers/Community room addition
- 4 Parking
- 5 Fire Department Parking
- 6 City Hall/Sheriff
- 7 Laverne Avenue

CITY OF LAKE ELMO COMBINED CITY HALL & PUBLIC SAFETY FACILITY

The new Lake Elmo City Hall / Public Safety Facility combines City Hall staff and functions, the entire Fire Department, and a satellite office for the Washington County Sheriff's department. This co-location involves renovating and expanding the City-owned Brookfield Office building to concentrate civic resources into a single structure at the historic core of the city. In addition, the Public Works facility will also be expanded to accommodate City growth and expanded service needs.



TOTAL ANTICIPATED PROJECT COST: \$14,600,000
DESIGN COMPLETION: Late summer 2021
CONSTRUCTION COMPLETION: Fall of 2022





MEETING THE DEMANDS OF AN EVOLVING FIRE SERVICE

Lake Elmo currently has two fire stations, Fire Station #1 at 3510 Laverne Ave. N. and Fire Station #2 at 4259 Jamaica Ave. N. This project will consolidate these two stations into a single, state of the art station that will meet the needs of our community and firefighters today and into the future. The building is designed to accommodate increasing call volumes, meet the demands for training and to support our evolving role as all hazard responders.

Due to the changing environment of fire department staffing needs and the impacts of that in relation to incident response times and budget responsibility, the fire department is consolidating to a single station which will allow the department the ability to transition to a staffing model that provides 24/7 coverage from the single station. This change requires the updated facilities like staff dorm rooms, day room and kitchen area, fitness room, staff workspaces and offices.

Educational materials provided by the City of Lake Elmo

For more information, visit our website: www.lakeelmo.org or contact Kristina Handt, Administrator at KHandt@lakeelmo.org



The current fire stations are too small to accommodate modern apparatus and equipment and cannot provide adequate health protections for our firefighters.

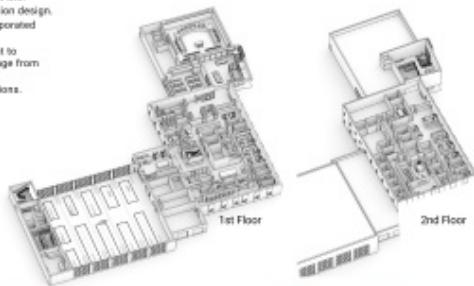
A FUNCTIONAL FIRE STATION

A new, single, state-of-the-art station will meet the needs of our community and firefighters today and into the future. Designed to accommodate our evolving role as all-hazard responders it will:

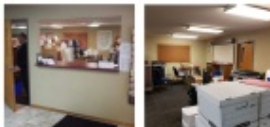
- Modernize our facilities following best practices in station design.
- Enhance firefighter training with training features incorporated into the building.
- The addition of living quarters will allow the department to transition to a staffing model that provides 24/7 coverage from the single station.
- Improve response times and overall department operations.

DESIGNED FOR FIREFIGHTER HEALTH AND SAFETY

- Distinct spaces to properly decontaminate gear and equipment. Focus to reduce staff exposure to firefighting carcinogens and other toxic materials.
- Properly ventilate the apparatus bay to reduce staff exposure to diesel exhaust and other harmful fumes.
- Space that supports the physical and mental health of staff.
- Clear separation between public and private spaces.



Lake Elmo City Hall, built in 1986, is a very small 2,806 SF. There are insufficient offices for all staff members and the restrooms are not accessible. The council chambers are small, do not provide sufficient space for department heads or members of the public, and lack modern technological updates. City staff have long outgrown this building and have since moved into the Brookfield Building located across the parking lot.



The Brookfield Building was purchased by the City in 2018 as a method of maintaining city functions next to the outgrown City Hall at a lower cost alternative to new construction. It was constructed in 1980 and will require a major overhaul to increase its useful life.



AN EXPANDED AND IMPROVED CITY HALL

- Improved service accessibility
- Community room available for public use
- New council chambers with updated technology
- Additional conference rooms
- Co-locate Washington County Sheriff staff
- Office space for growth of city staff
- Accessible restrooms.

