



fresh

Your Weekly Source for City News and Information

Public Meetings Next Week

- Planning Commission Meeting Monday, January 24 7:00PM

[City Agendas and Minutes](#)



Visit our website



January 18 City Council Meeting Summary

At their regular meeting on Tuesday, January 18 the City Council:

- Appointed Pat Barrett to the Parks Commission
- Appointed Ninna Waldoch to the EDA
- Accepted Bids and Awarded a Contract for Water Tower 3 to Phoenix Fabricators and Erectors LLC
- Accepted Bids and Awarded a Contract for Water Tower 3 Trunk Watermain Extension to Northdale Construction Company, Inc.
- Authorized the Issuance of a Request for Proposals for an Operational Audit of the Administration and Finance Departments

On the consent agenda the Council:

- Approved Payment of Disbursements and Payroll
- Approved 2022 Meeting Calendar Update
- Accepted December 2021 Public Works Report
- Accepted December 2021 Building Department Report
- Accepted December 2021 Fire Department Report
- Accepted December 2021 Sheriff's Department Report
- Authorized Purchase of Tandem Dump Truck
- Authorized Purchase of Asphalt Hot Box
- Approved Bulk Meter Purchase
- Approved Skid Loader Purchase
- Approved Amendment #2 for the Stonegate Watermain Extension Project Grant
- Approved Amendment #2 for the 31st St Watermain Extension Project Grant
- Authorized Advertising for Building Inspector
- Approved Job Description and Hire for Code Enforcement Official
- Approved Pay Request No. 7 for Old Village Phase 5 and 6 Street and Utility Improvements.
- Approved Security Reduction for Hidden Meadows 2nd Addition.
- Approved Utility Oversize Cost Reimbursement for Hidden Meadows 2nd Addition.
- Awarded Bids for Overhead Doors for City Center

January 24 Planning Commission Agenda



3800 Laverne Avenue North
Lake Elmo, MN 55042

(651) 747-3900
www.lakeelmo.org

NOTICE OF MEETING

The City of Lake Elmo
Planning Commission will conduct a meeting on
Monday January 24, 2022
at 7:00 p.m.

AGENDA

1. Pledge of Allegiance
2. Approve Agenda
3. Approve Minutes
 - a. December 13, 2021
4. Public Hearings
 - a. Applicants Carolyn and Brett Horttor, owners of property on the southwest corner of Lake Elmo Avenue and 32nd Street (PID #13.029.21.33.0042), are seeking a 45-foot rear setback variance. The applicants would like to construct a four-season porch as part of their new home construction that would encroach on the required 195-foot setback from the ordinary high water level (OHWL) of Lake Elmo. The applicants propose the main structure be 195 feet from the OHWL and the four-season porch be 175 feet from the OHWL.
5. New/Unfinished Business
 - a. Minor Update to City of Lake Elmo Design Guidelines & Standards Manual
6. Communications/Updates
 - a. City Council Update
 - 1-4-2022 – Reappointed Planning Commissioners Risner and Steil and approved PC Work Plan
 - b. Staff Updates
 1. Training Opportunity – Your Role in Land Use Decision-Making & Regulation February 1 9:00 am <https://www.lmc.org/learning-events/events/league-events/land-use-regulation-for-local-officials/>
 2. New hire
 - c. Upcoming PC Meetings:
 1. February 14, 2022
 2. February 28, 2022
7. Adjourn

***Note: Every effort will be made to accommodate person or persons that need special considerations to attend this meeting due to a health condition or disability. Please contact the Lake Elmo City Clerk if you are in need of special accommodations.



how well we're meeting your expectations. Please take a few minutes to look back on 2021 and complete a short survey so we can gauge how you feel about the level of service provided in Lake Elmo.

[Take The Survey Here](#)

Last week, Sheriff Dan Starry and Count Attorney Pete Orput met with around 40 Lake Elmo residents to discuss crime prevention and safety. They shared info on crime trends in our city, what resources our residents have available to them, and ways to get involved to make Lake Elmo safer for everyone. If you missed it, a full recording of the presentation and Q&A segment is available here:



REMINDER: Winter Parking Ordinance In Effect

Winter parking ordinance prohibits parking on Lake Elmo Streets from Nov. 1 through March 31 between 2:00 AM and 7:00 AM.

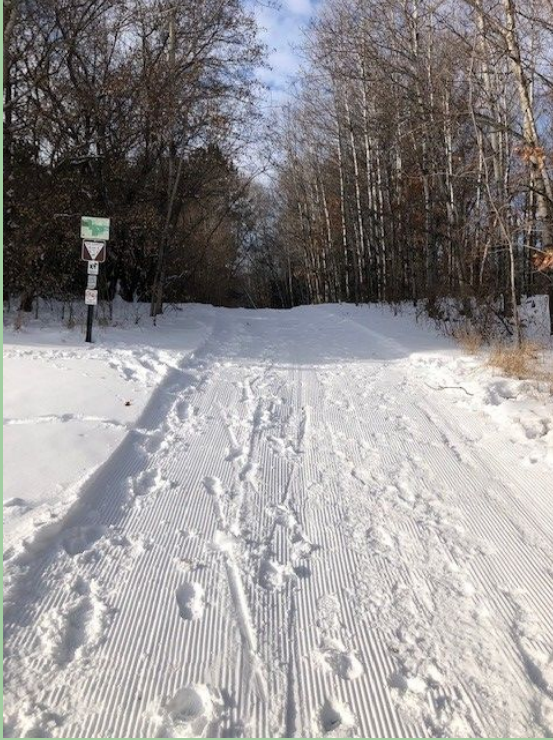
Public Works can't clear the roadways with cars blocking their paths!



The Lions Park Ice Rink is ready for skaters!



Trails are groomed for skiers in Sunfish Lake Park and Reid Park



Winter Fest at Lake Elmo Park Reserve

Winter Fest will be 11 a.m. to 3 p.m. Saturday, Jan. 29, at Lake Elmo Park Reserve.

Activities at the Nordic Center will include cross country ski lessons.

- Just beginning on classic skis? Learn how to glide without shuffling. Skate skiers, make your move to the next hill. Helpful downhill survival techniques, "how to get up the next hill," and many more useful ski skills will be demonstrated.
- Already an Intermediate skier? Learn to lengthen your glide on both classic and skate skis, or work on hill climbing or new skate techniques not tried yet, such as V2 and Field Skate.
- Advanced skiers, hone techniques for more efficiency. Learn how to work the trail for better performance or how to do transitions and technique variations.

Make reservations for lessons directly with Ride and Glide Ski Club at its website, www.rideandglide.org. Meet at the Nordic Center and plan to arrive early to sign-in before your desired time. Participants are encouraged to bring their own equipment.



Where & How to Place Your Garbage Can

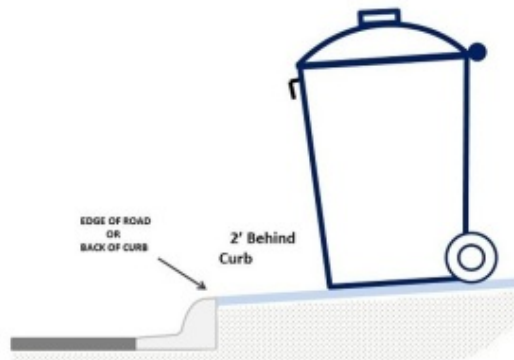
Garbage and recycling containers need to be placed off the street per MN State Statute 160.2715 (A)(2)

Please Do not place garbage cans in the street. We realize this area is an enticing location to place garbage cans, but it creates a hazard as it narrows the travel lanes creating safety concerns. The cans could get hit by vehicles or create visibility issues. Most garbage trucks are equipped with a hydraulic extending arm that grasps garbage cans. It is recommended that garbage cans be placed at least 3 to 5 feet off the edge of pavement, into your driveway, so they are out of the way of traffic and maintenance vehicles.



Retrieve your garbage cans soon after collection. Garbage cans often sit at the roadside on collection day until the evening. Empty cans are vulnerable to winds and road maintenance operations and could cause a hazard if knocked into the roadway. Prompt removal of empty containers is recommended.

These tips can make garbage collection day safer and easier for all of us. The City of Lake Elmo thanks you for taking time to read this message!





The City of Lake Elmo is Accepting Applications for the Planner Position

[Visit our website for information and application materials.](#)

Washington County Sheriff's Update

Nothing can ruin the Christmas spirit faster than becoming the victim of a crime. The Washington County Sheriff's Office has had an uptick in crime in several new developments. All the crimes have been opportunity crimes, meaning it has been easy for criminals. Leaving keys or key fobs in the car, valuables and money in unlocked vehicles is too tempting for the criminals. All the vehicles that were stolen from our city had the keys left in them. No one is hot wiring vehicles or punching ignitions. The break in to vehicles are also not occurring by breaking windows. All vehicles have been left unlocked. Think of everything in your car in terms of cash value. If you would not leave the equivalent in cash out, do not leave it out in the form you bought it.

This holiday season, the Sheriff's office would like to remind all residents of the following holiday crime prevention tips:

- Lock your vehicle

- Do not leave keys/key fobs in the vehicle
- Do not leave valuables in plain view
- Park in well-lit areas
- Do not leave any personal identifying papers in your vehicle
- Do not leave a vehicle running while unattended.
- Shut and secure garage doors when not in use.

Please contact the Washington County Sheriff's Office if you see a suspicious vehicle or person in your neighborhood. You can call 911 or the non-emergency number, 651-439-9381.

SGT. Erickson



The poster features a dark blue header with the text "Be SALT SMART!" in large, bold, yellow and white letters. To the right of "SALT" is a cluster of white salt crystals. Further right, the words "WATER SOFTENERS" are written in bold, white, sans-serif capital letters. In the top right corner of the header is the "East-Metro Water Resource Education Program" logo, which includes a stylized green and blue wave icon.

Water softeners account for up to 65% of the chloride that is discharged from municipal wastewater treatment plants statewide.

Hard water is pervasive in our state; thus, water softeners are a common fixture in many Minnesota homes. Conventional water softeners treat hard water by exchanging the hard minerals with sodium and potassium ions. When the system is 'full,' it resets or regenerates by sending a pulse of salt water through the system. Municipal wastewater treatment plants do NOT treat for chloride, meaning that salty water is then discharged to our waterways.

How do I reduce my chloride footprint?

Do you need to soften your water? If you live in a city, check to see whether your water utility softens the water before distribution. This eliminates or decreases the need for a water softener.

Optimize your water softener settings: If you have an older water softener, regeneration generally happens on a timer versus by water use – extending the timing between regeneration cycles will reduce the amount of wastewater produced.

Replace your water softener: Newer water softener models regenerate based on water use versus a timer, using less salt and water.

Don't soften ALL your water: Only soften the water from your hot water taps versus cold water drinking taps.

Reduce your overall water use: Cutting back lessens demand for softened water and conserves our water resources!

Using more than 1 40-lb bag of salt a month?
Check with a water professional to optimize softener efficiency!

DO YOU HAVE A
**LEAKY
TOILET?**



FIND OUT:

1. Add a drop of food coloring to the tank.
2. Wait 10 minutes.
3. If you see the color in your toilet bowl, you have a leak!

**Water Conservation
Rebate Program**

The City of Lake Elmo, in partnership with the Metropolitan Council, is offering a rebate program for purchases of eligible WaterSense toilets and Smart Irrigation Controllers. Qualifying purchases are eligible for up to a \$200 credit on your water bill.

[Program Details Available Here](#)





Winter 2022 at Lake Elmo Library

Please visit Lake Elmo Library this season for library materials and programs to help you through the long winter nights. While you are here, don't forget to peek at our special window display, a Winter Fairy Village, part of an effort to "Light Up Lake Elmo" by local residents.

We welcome our community families to visit the library for in-person Storytime on most Fridays at 10:30 a.m. Visit washcolib.org/storytime for the online calendar and for links to virtual storytimes and other resources.

Adults are welcome to take part in the Winter Reads program in January and February. Participate by submitting book reviews for a chance to win prizes! Visit the washcolib.org/winter-reads webpage for information and related events.

We look forward to your visit to Lake Elmo Library!

Hours:

Monday 10-4

Tuesday, Wednesday, Thursday 12-8

Friday 10-4

Saturday 10-2

Lake Elmo Library
3537 Lake Elmo Avenue N
Lake Elmo MN 55042
651-275-8515
washcolib.org

Washington County Library Events

The Sally Manzara Interpretive Nature Center in Sunfish Lake Park is now open seven days a week, please

visit www.sminc-lake-elmo.org for details. We have a family event every Saturday morning at 10 AM, but this Saturday's "Shelter Building" event had to be cancelled due to the illness, it is rescheduled for February 19th. Please check our website for up-to-date information.



Sally Manzara Interpretive Nature Center (SMINC)

Family Nature Exploration Saturdays 2022

10-11am



Suggested \$5 donation/family at the door will help support our programming.

Most events are held outdoors, please dress appropriately for the weather.

The Sally Manzara Interpretive Nature Center is located in Sunfish Lake Park in Lake Elmo, MN

<https://sminc-lake-elmo.org/>

www.facebook.com/sunfishlakepark



January 1

Weather Tracking

Learn how to track weather

with Meteorological Engineer Dave Carlson.



January 8

Otter Sledding

Learn how river

otters slide in the snow and try it out on your own sleds.



January 15

International Kite Flying Day

Join us to

celebrate and fly kites. Bring your own or fly ours. Weather permitting, check website for updates.



January 22

Shelter Building

Learn how to build a quinzhee shelter in the

snow. Bring shovels.



January 29

Winter Tracks

Take a hike to find winter tracks in the

snow with Ecologist Mary Frick.

Public Facilities Project Update

- At the November 3 City Council Meeting the City Council awarded bids for the new City Center and Public Works Addition.
- At the January 4, 2022 City Council Meeting the City Council awarded bids for painting at the new City Center

Regular updates and documents are available [here](#).



- 1 New City Hall Entrance
- 2 New Fire Station Expansion
- 3 Council Chambers/Community room addition
- 4 Parking
- 5 Fire Department Parking
- 6 City Hall/Sheriff
- 7 Laverne Avenue

LEO A DALY

CITY OF LAKE ELMO COMBINED CITY HALL & PUBLIC SAFETY FACILITY

The new Lake Elmo City Hall / Public Safety Facility combines City Hall staff and functions, the entire Fire Department, and a satellite office for the Washington County Sheriff's department. This co-location involves renovating and expanding the City-owned Brookfield Office building to concentrate civic resources into a single structure at the historic core of the city. In addition, the Public Works facility will also be expanded to accommodate City growth and expanded service needs.



TOTAL ANTICIPATED PROJECT COST: \$14,600,000
DESIGN COMPLETION: Late summer 2021
CONSTRUCTION COMPLETION: Fall of 2022





MEETING THE DEMANDS OF AN EVOLVING FIRE SERVICE

Lake Elmo currently has two fire stations, Fire Station #1 at 3510 Laverne Ave. N. and Fire Station #2 at 4259 Jamaica Ave. N. This project will consolidate these two stations into a single, state of the art station that will meet the needs of our community and firefighters today and into the future. The building is designed to accommodate increasing call volumes, meet the demands for training and to support our evolving role as all hazard responders.

Due to the changing environment of fire department staffing needs and the impacts of that in relation to incident response times and budget responsibility, the fire department is consolidating to a single station which will allow the department the ability to transition to a staffing model that provides 24/7 coverage from the single station. This change requires the updated facilities like staff dorm rooms, day room and kitchen area, fitness room, staff workspaces and offices.

Educational materials provided by the City of Lake Elmo

For more information, visit our website: www.lakeelmo.org or contact Kristina Handt, Administrator at KHandt@lakeelmo.org



The current fire stations are too small to accommodate modern apparatus and equipment and cannot provide adequate health protections for our firefighters.

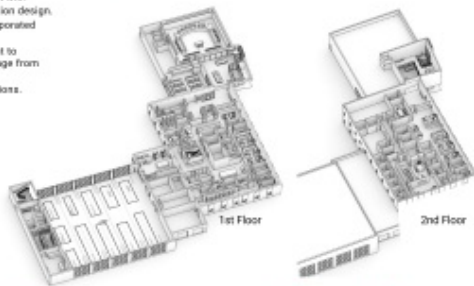
A FUNCTIONAL FIRE STATION

A new, single, state-of-the-art station will meet the needs of our community and firefighters today and into the future. Designed to accommodate our evolving role as all-hazard responders it will:

- Modernize our facilities following best practices in station design.
- Enhance firefighter training with training features incorporated into the building.
- The addition of living quarters will allow the department to transition to a staffing model that provides 24/7 coverage from the single station.
- Improve response times and overall department operations.

DESIGNED FOR FIREFIGHTER HEALTH AND SAFETY

- Distinct spaces to properly decontaminate gear and equipment. Focus to reduce staff exposure to firefighting carcinogens and other toxic materials.
- Properly ventilate the apparatus bay to reduce staff exposure to diesel exhaust and other harmful fumes.
- Space that supports the physical and mental health of staff.
- Clear separation between public and private spaces.



Lake Elmo City Hall, built in 1986, is a very small 2,806 SF. There are insufficient offices for all staff members and the restrooms are not accessible. The council chambers are small, do not provide sufficient space for department heads or members of the public, and lack modern technological updates. City staff have long outgrown this building and have since moved into the Brookfield Building located across the parking lot.

The Brookfield Building was purchased by the City in 2018 as a method of maintaining city functions next to the outgrown City Hall at a lower cost alternative to new construction. It was constructed in 1980 and will require a major overhaul to increase its useful life.

AN EXPANDED AND IMPROVED CITY HALL

- Improved service accessibility
- Community room available for public use
- New council chambers with updated technology
- Additional conference rooms
- Co-locate Washington County Sheriff staff
- Office space for growth of city staff
- Accessible restrooms.

