



fresh

Your Weekly Source for City News and Information

Public Meetings Next Week

- Planning Commission Monday, April 25
7:00PM

[City Agendas and Minutes](#)



Visit our website



The Brookfield building at 3880 Laverne Ave is closed and under construction. All City Services are available at City Hall, 3800 Laverne

On Tuesday, April 26 demolition crews are removing two large concrete walls. There is a possibility of a large boom or crashing noise.

Please drive slowly and watch for construction activity

[April 19 City Council Meeting Summary](#)

At the City Council meeting on April 19th, the City Council:

- Approved the Wildflower 4th Conservation Easement Vacation
- Approved a Variance for 9404 Lake Jane Trail North
- Accepted Bids and Awarded the Contract for the 2022 Street and Utility Improvements
- Approved Engineering Design Standards Updates and Revisions dated January 2022

On the Consent Agenda, the City Council:

- Approved Payment of Disbursements and Payroll
- Accepted a Donation from the Lake Elmo Jaycees
- Approved the Spring/Summer 2022 Newsletter

Meeting Materials Can Be Accessed Here

Monday, April 25 Planning Commission Agenda



3800 Laverne Avenue North
Lake Elmo, MN 55042

(651) 747-3900
www.lakeelmo.org

NOTICE OF MEETING

The City of Lake Elmo
Planning Commission will conduct a meeting on
Monday April 25, 2022
at 7:00 p.m.

AGENDA

1. Pledge of Allegiance
2. Approve Agenda
3. Approve Minutes
 - a. April 11, 2022
4. Public Hearings
5. New/Unfinished Business:
 - a. Comprehensive Plan Implementation in the Village Planning Area- Pedestrian Access, Design Standards, and Draft Code Review
6. Communications/Updates
 - a. City Council Update
 - b. Upcoming PC Meetings:
 1. May 9, 2022
 2. May 23, 2022
6. Adjourn

***Note: Every effort will be made to accommodate person or persons that need special considerations to attend this meeting due to a health condition or disability. Please contact the Lake Elmo City Clerk if you are in need of special accommodations.

Meeting Materials Can Be Accessed Here

Understanding Your Property Value and Taxes



Why did my real estate value increase so much?

The real estate market in Washington County and in the rest of the Twin Cities metro area has seen some of the largest gains in recent history during the past year and a half. Sales prices paid for homes have greatly exceeded the county's assessed values, also called estimated market value.

For example, the nearly 600 home sales in Cottage Grove were on average roughly 22% higher than the county's assessed value, while sales in Oakdale exceeded the assessed values by nearly 18%.

Assessed values are estimates of market value based on sales in a community or neighborhood. They are required to be at or very close to the amount a property would sell for if placed on the open market as of a certain date.

If my value went up 20%, will my tax go up 20%?

A value increase does not correlate directly to an increase in property tax. Property value is only one factor that is used to determine the portion of property tax each property owner pays.

How are property taxes determined?

Property taxes do not have a set rate like income or sales taxes. With property taxes, taxing jurisdictions determine the dollar amount to raise from property taxes. This is called the "levy." The levy is divided by the total value of the property in the taxing jurisdiction, the "tax base," to arrive at a tax rate. The tax rate is multiplied by the value of each individual parcel to determine each parcel's share of property taxes.

$$\text{LEVY} \div \text{TAX BASE} = \% \text{ PROPERTY TAX RATE}$$

$$\% \text{ PROPERTY TAX RATE} \times \text{TAXABLE VALUE OF THE PROPERTY} = \text{AMOUNT OF TAXES OWED}$$

Does an increase in property value mean the government will get more money?

Increases in values do not generate more tax revenue. Only an official action by a taxing authority to increase the tax levy will increase the total amount collected and only the amount levied can be collected.

City	Number of Sales	Average Value Increases
Cottage Grove	585	22.02%
Forest Lake	290	26.75%
Hugo	316	20.48%
Lake Elmo	172	21.64%
Mahtomedi	117	24.78%
Oakdale	404	17.65%
St. Paul Park	84	19.72%
Stillwater	363	18.22%
Woodbury	1465	18.34%

What should I do if I feel my assessed market value or classification are incorrect?

Call 651-430-6175 to talk to your assessor. The earlier you call, the more options you have to correct any errors.

Factors that impact the property tax calculation

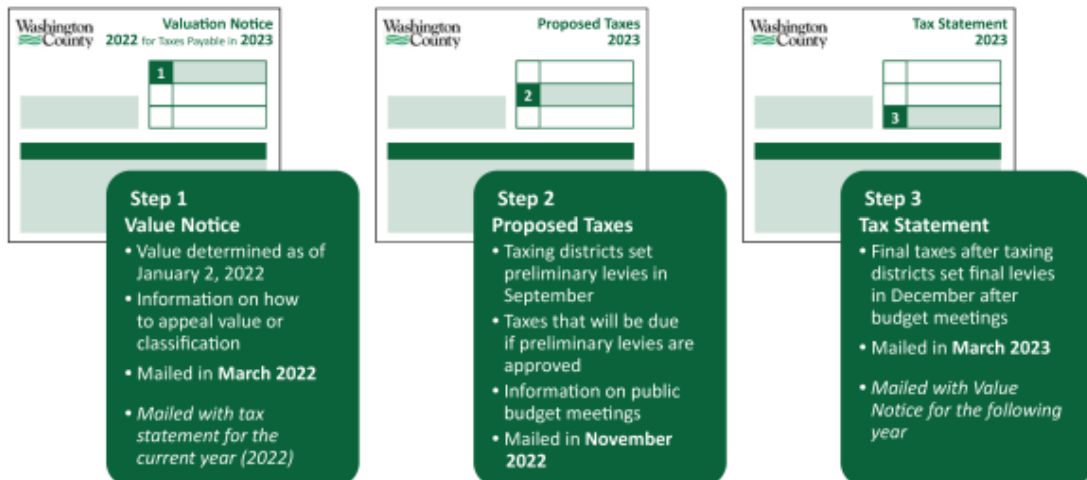


Programs to reduce or defer property taxes for homeowners

- Homestead market value exclusions
- Market value exclusions for Veterans with disabilities
- Special homestead exclusions for property owners who are blind or disabled
- Property tax refund programs
- Senior Citizen Property Tax Deferral

Find information at:
<https://www.revenue.state.mn.us/property-tax-programs>

Property Tax Process



Questions?

Contact the Department of Property Records and Taxpayer Services at 651-430-6175



FOR IMMEDIATE RELEASE

April 7, 2022

Contact: Kristina Handt
City Administrator
651-747-3905

Email: khandt@lakeelmo.org

Lake Elmo Adopts Moratorium on New Plats due to Water Supply Issues Created by District Court Ruling

At its April 5, 2022 meeting, the Lake Elmo City Council unanimously approved a moratorium on new plats in the city's low pressure water zone due to water supply concerns. The moratorium, which goes into effect April 8th and lasts for up to one year, will prevent developers from submitting applications for both residential and commercial development in roughly a quarter of the city.

Last year the City of Lake Elmo, applied for an amendment to its water appropriations permit to increase the allowed water usage due to rapid growth over the last few years. Citing the 2017 Ramsey County District Court Order 62-CV-13-2414 regarding water levels of White Bear Lake, the DNR denied the city's request.

"We are trying to abide by the Met Council's growth requirements and provide for the public health and safety of our community," said Lake Elmo Mayor Charles Cadenhead. "But our efforts are being hampered by a court ruling that is endangering the livelihood of our community. It should be noted that the trigger elevation in the court ruling is based on the recreational use of White Bear Lake and was not made for environmental reasons."

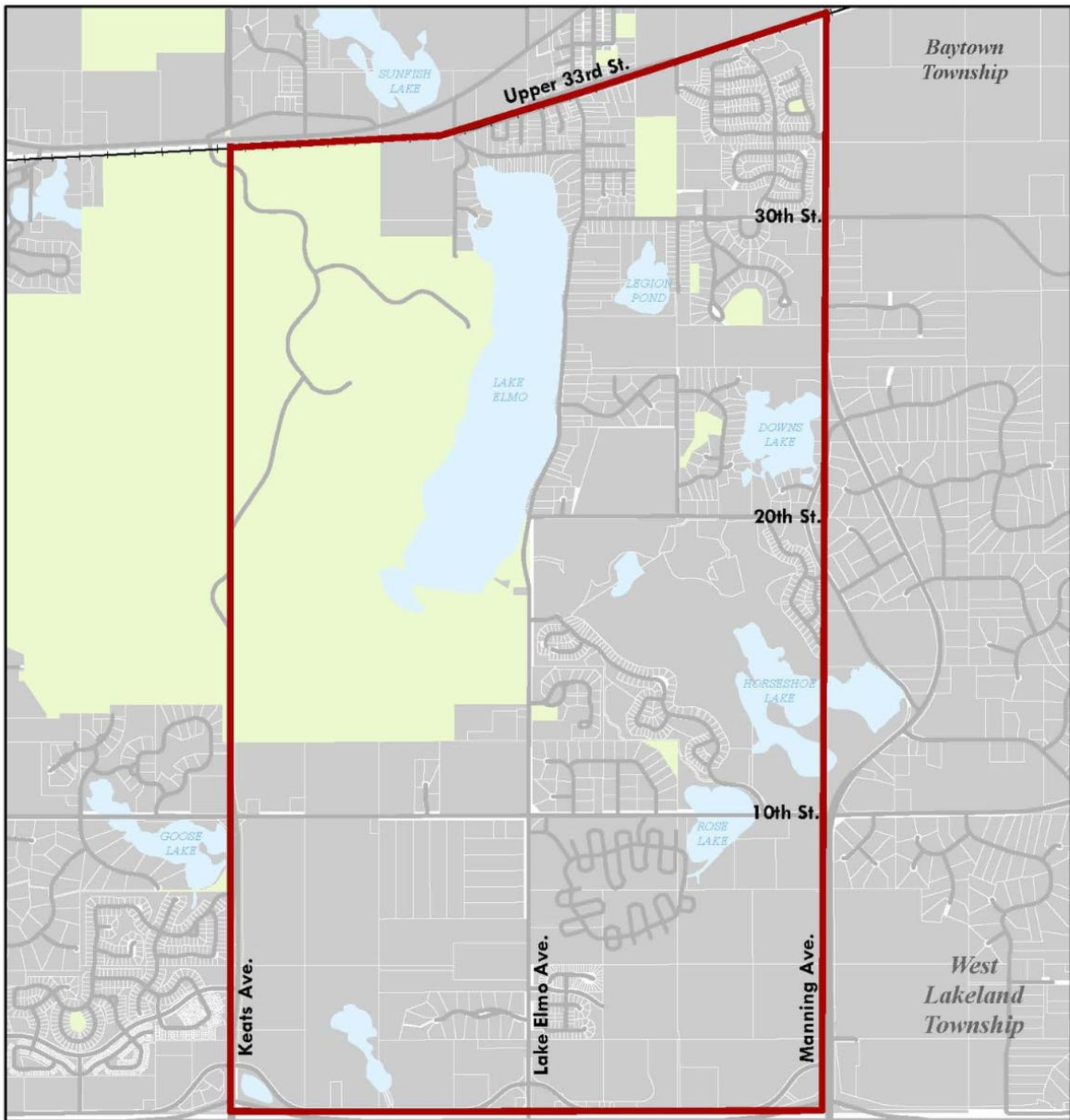
At the hearing Tuesday evening, the council heard from a number of landowners and developers who have been working on projects for a year or more. The moratorium will halt progress on nearly 800 residential units and 100s of thousands of square feet of new commercial, business and warehouse space. Residents also expressed concern about limiting the moratorium to just a portion of the city. While the council has not ruled out expanding the moratorium in the future, they are taking this initial step to protect the most vulnerable area of the water system.

The City, along with a number of other east metro communities affected by the Ramsey County District Court ruling, are seeking a legislative solution. SF 3055 (Housley) was heard in the Senate Environment and Natural Resources Policy Committee in February but the House companion (HF3880, Lillie) was later returned to the author. The bill would require the DNR to approve permit amendment requests for appropriations and new wells from communities within 5 miles of White Bear Lake provided that request is consistent with a DNR approved water supply plan prior to 2021. Most communities updated their water supply plans in conjunction with the 2040 comprehensive plans in 2020 to ensure proper infrastructure planning that aligns with the community's growth plan through 2040.

"Given the PFAS contamination and lack of access to a surface water source, a legislative solution is needed to solve the water supply issues in Lake Elmo," said Cadenhead. "Without action by our state elected officials, the city's hands are tied and we have no option but to look for ways to limit demand to this vital resource for communities"

Attached: Ordinance 2022-03

3800 Laverne Avenue North * Lake Elmo * Minnesota * 55042 * 651.747.3900



CITY OF LAKE ELMO WATER PRESSURE LOW PRESSURE ZONE



— LOW PRESSURE ZONE BOUNDARY

Map Date: March 2022
Created By: Planning Dept.





City Center Groundbreaking

Saturday, April 30th 9:00AM

3880 Laverne Ave N, Lake Elmo, MN 55042



How will Lake Elmo change in 50 years?

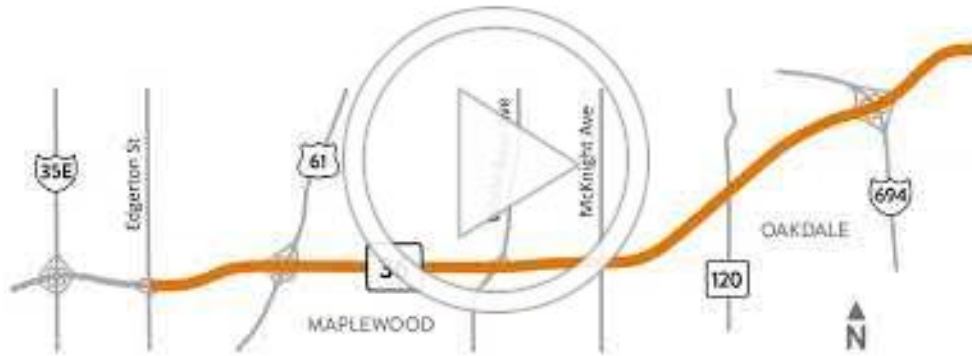
Part of the construction of the Lake Elmo City Center is a time capsule project. We're inviting residents to share their predictions for Lake Elmo in the next 50 years. Submission slips are available at City Hall and City events for you to tell us how you think we'll change between now and 2073, so you tell us:

- How many people will live in Lake Elmo in 2073?
- What will downtown look like?
- How are City services delivered?
- What else does the future hold?

Fill out a slip and we will put them into a time capsule in the City Center, and come back in 2073 to see how your predictions turn out!

The City of Lake Elmo is accepting artifacts from Lake Elmo History to display in the new City Center. If you have something you'd like displayed, contact Jake Dickson, Assistant City Administrator at 651-747-3908 jdickson@lakeelmo.org

Weekend Directional Closures



COUNTY HIGHWAY 13 (IDEAL AVENUE)

Project Update



When is this project expected to occur?

This project is expected to start in late-March or early-April with tree removals and private utility relocations. After private utilities have relocated, roadway work will start and is anticipated to be completed fall of 2022.



What hours will workers be in the area? Will they work on weekends?

Normal working hours for this project will be Monday through Friday from 7:00 AM to 7:00 PM and on Saturdays from 9:00 AM to 5:00 PM. No work will be allowed on Sundays.



Will there be dust? Noise?

Residents that live near the project should expect to see dust and hear noise from construction equipment during normal working hours. To help limit the amount of dust in the air, water or a dust palliative will be sprayed on gravel surfaces.

Will Ideal Avenue be closed during construction?

Two-way traffic will remain on Ideal Avenue during tree removal and private utility relocation; however, these lanes may be shifted and narrowed. Once roadway work starts, segments of Ideal Avenue will be closed. See the Construction Staging and Detour Route Graphics for more information.

DETOUR ROUTE



CONSTRUCTION STAGING



STAGE 1



STAGE 2



STAGE 3



2022 Spring Road Restrictions



Spring Load Restrictions begin March 16th

Weight Restrictions (Seasonal)

Weight Restrictions

Axle weight limits are restricted on certain streets within the City of Lake Elmo to protect the streets from damage when road and weather conditions warrant in accordance with State & City regulations.

All City streets are limited to **SEVEN TON AXLE** per axle weight limit unless otherwise posted. Residents are encouraged to plan ahead for moving or construction projects during the spring thaw season since weight restrictions will be enforced & large trucks will not be allowed on restricted streets.

Dates

Weight restrictions take effect during the spring thaw season, which is usually around March 1st to May 15th, dependent upon the weather. City of Lake Elmo follows the Seasonal Load Limits established by the State of Minnesota. Check the MN DOT website for dates.
http://dotapp7.dot.state.mn.us/research/seasonal_load_limits/sllindex.asp

Exemptions

No exemptions or permits are given during this time period, except for vehicles responding for emergency situation.

Streets Regulated

The City of Lake Elmo only regulates the city streets.

All County roads are regulated by Washington County and all Highways are regulated by the State of Minnesota. Private roads are not regulated by the City, but by the homeowners associations or designated responsible party. The City does not maintain any information on contracts for private roads.



NOTICE FIRE HYDRANT FLUSHING OPERATION

The Lake Elmo Public Works will be involved in a water main and fire hydrant flushing program starting Monday April 18th, 2022 and continuing through the week of April 25th, 2022

This notice is to inform our customers that the flushing and valve operation will cause some areas to be without water for short periods of time and a decrease in pressure which may affect automatic flushing and pressure sensitive equipment.

Residents may also notice mineral particles in their water that can affect laundry operations. If mineral particles are detected, cold water should be run to clear out household water lines. If the problem persists, residents should contact the Lake Elmo Public Works at (651) 747-3940.



The City of Lake Elmo is on Nextdoor!

In an effort to reach as much of the community as possible we've joined Nextdoor. We will use our public agency page to post news and important updates for residents.

[Find us here!](#)



The City of Lake Elmo is hiring Public Works Seasonals. We are accepting applications for seasonal workers to assist the Public Works department with general maintenance of City streets, parks, and properties. This is a great opportunity for graduating seniors as well as students home from college. Information and applications are available [here](#).



Business Retention and Expansion Program

The Lake Elmo Economic Development Authority (LEEDA) will be kicking off a Business Retention and Expansion Program in March. LEEDA members will be reaching out to schedule visits with members of our business community to learn more about their business, what's going well, what could be done differently and how LEEDA can help them continue to grow and prosper in Lake Elmo.

With around 300 businesses in Lake Elmo and only 6 LEEDA commissioners, this campaign will take many months and likely continue into 2023. Commissioners will be focusing on businesses in the Old Village area first and then moving towards the I-94 corridor later this year. If you have any questions or would like to schedule a visit contact Kristina Handt at 651.747.3905 or khandt@lakeelmo.org



Need a Trusted **Business Advisor?**

This program provides free and confidential one-on-one assistance from MCCD's experienced staff, customized to meet the specific needs of each entrepreneur in the creation, growth, and success of their business.

Technical Assistance & Lending

- Business & strategic planning
- Marketing & communications planning
- Regulatory, tax, licensing, & accounting training
- Financial assessment
- Referrals to critical professional services
- Access to capital



We want to help you succeed!

To learn more about a free personalized plan for your business contact:



info@mccdmn.org
(612) 789-7337

www.mccdmn.org/open-to-business





FOR IMMEDIATE RELEASE:
April 13, 2022

Contact: Alex Carlson
Public Affairs Coordinator
(612) 750-9960
acarlson@mmcd.org

Mosquito Control activity beginning in your community in April

Metropolitan Mosquito Control District trucks, helicopters, and staff will be out in neighborhoods and parks this spring and summer working to reduce mosquito-borne disease and annoyance.

SAINT PAUL - Every spring after the snow melts and as temperatures rise, we begin to find mosquito larvae in ponds and wetlands around the Twin Cities. The Metropolitan Mosquito Control District (MMCD) will be conducting surveillance and treatment activities in your community to reduce the risk of disease and annoyance in an environmentally-sensitive manner.

Each year the field staff at MMCD monitors and treats wetlands that breed mosquitoes with a fleet of trucks and helicopters. Many of our seasonal staff begin working in April and residents of the seven county metro area may notice the green or white trucks with the MMCD logo or staff on bikes or on foot wearing brightly colored "Mosquito Control" shirts.

At times MMCD employees may need to cross private property for access to check and treat areas for mosquito larvae. MMCD management asks the community to please stay several feet away from field staff and ensure children and pets are kept at a distance. If you have questions about mosquito control activities or concerns about an employee, please call the MMCD front desk at (651) 645-9149 or visit MMCD.org.

Some of the activities that MMCD may be doing in your community include:

- Wetland surveillance - determining if ponds or swamps have mosquito larvae present.
- Catchbasin surveillance - pulling off grates and inspecting neighborhood catch basins to determine if mosquito larvae are present.
- Ground larval treatments - applying control materials to a wetland with a hand spreader or backpack.
- Helicopter larval treatments - applying control materials to a wetland via helicopter.
- Catchbasin treatments - applying control materials to neighborhood catchbasins.
- Setting or collecting traps - surveillance helps MMCD determine where and what types of mosquitoes are active.

The control materials and methods used by MMCD are regularly tested for safety and only applied when surveillance indicates they would be effective. They are designed specifically to target mosquito larvae or adults with minimal impacts on non-target insects. The control materials are not harmful to people, pets, or wildlife. For a complete list of control materials used, please visit MMCD.org.

Work for MMCD

Each year Metropolitan Mosquito Control District hires around 180 seasonal employees to work at one of our six field facilities located in Oakdale, Rosemount, Jordan, Plymouth, Maple Grove, and Andover. Positions are still available at every facility and we are seeking great candidates who enjoy working outdoors, helping the community, and learning about the environment. Seasonal jobs have great starting wages, flexible start and end dates, paid time off, and more! Get more details and apply today at mmcd.org/employment.

The Metropolitan Mosquito Control District appreciates your support. For information about our programs or for tips on how to reduce mosquitoes near your home, please visit MMCD.org.

###

For press inquiries or interview requests, please contact Alex Carlson - acarlson@mmcd.org or (612) 750-9960.

LEFD Updates



Severe Weather Awareness Week – Extreme Heat. We wrap up Severe Weather Awareness Week, our focus today is Extreme Heat safety.

As we move into the warmer months, it's important to stay informed on how to keep yourself healthy and safe during those sweltering hot days.

Never Leave Children, Disabled Adults or Pets in Parked Vehicles!

Each year, dozens of children and untold numbers of pets left in parked vehicles die from hyperthermia. Hyperthermia is an acute condition that occurs when the body absorbs more heat than it can handle. Hyperthermia can occur even on a mild day.

Studies have shown that the temperature inside a parked vehicle can rapidly rise to a dangerous level for children, pets and even adults. Leaving the windows slightly open does not significantly decrease the heating rate. The effects can be more severe on children because their bodies warm at a faster rate than adults.

Safety tips...

The National Weather Service will issue advisories or warnings when the heat index is expected to have a significant impact on public safety. The common guidelines for the issuance of excessive heat warnings is when the maximum daytime index is expected to reach 105, and the nighttime low temperature does not fall below 75 or 80 degrees.

Here are some tips to follow to ensure that heat-related problems do not impact you...

- Slow down. Strenuous activities should be reduced, eliminated or rescheduled to the coolest time of the day. Individuals at risk should stay in the coolest available place, not necessarily indoors. Dress for summer. Lightweight, light-colored clothing

- reflects heat and sunlight and helps your body maintain normal temperatures.
- Put less fuel on your inner fires. Foods such as proteins that increase metabolic heat production also increase water loss.
 - Drink plenty of water or other non-alcoholic fluids. Your body needs water to keep cool. Drink plenty of fluids, even if you don't feel thirsty. However, those who suffer from epilepsy, heart, kidney or liver disease, are on fluid restrictive diets, or have a problem with fluid retention should consult a physician before increasing their consumption of fluids.
 - Do not drink alcoholic beverages.
 - Spend more time in air-conditioned places. Air conditioning in homes and other buildings markedly reduces danger from the heat. If you cannot afford an air conditioner, spending time each day in an air-conditioned environment during hot weather affords some protection.
 - Be careful not to get too much sun. Sunburn makes the job of heat dissipation that much more difficult.



Water Rebate Programs In Lake Elmo

It is not too early to think about how you irrigate this summer. The City of Lake Elmo offers rebates for smart irrigation controllers up to \$200, and rebates for efficient toilets up to \$100. Find out more [here](#).

Public Works Crews have begun filling potholes on City Streets. Feel free to report potholes by calling Public Works at 651-747-3940. Please slow down when approaching street crews. Thank you for your cooperation.



The City of Lake Elmo is Seeking Applicants for Multiple Committees

The City of Lake Elmo is seeking interested



residents to serve on two committees:

- EDA
- Planning Commission

[More Information Available Here](#)



The City of Lake Elmo is Accepting Applications for the following positions:

- Public Works Seasonal

[Visit our website for information and application materials.](#)

Lake Elmo Arbor Day Celebration

Saturday, *April 23*, 2022



In celebration of Arbor Day, the City of Lake Elmo is sponsoring a tree give-away on Saturday, April 23 9:00am-11:00am at Public Works (3445 Ideal). Please bring a bag for your tree.

www.arborday.org



LAKE ELMO FARMER'S MARKET

Seeking YOUTH Vendors for the 2022 Season

Market runs weekly beginning Saturday June 18th – September 3rd from 9-1pm

The market is offering an amazing opportunity for Youth in the community this summer, a booth dedicated to Youth Vendors/ Entrepreneurs!

Youth vendors may include: youth organizations (ie: Scouts), fundraising efforts (ie: PTO), youth farmers, young entrepreneurs looking for an opportunity within the community to sell their amazing creations/inventions, etc.

If you or someone you know is interested, please contact Jill (Market Manager) for more information about specific guidelines for youth vendors, application process and to answer any additional questions.

651-261-4493 or pottingshedpottery@gmail.com

See YOU at the market!

(in less than 5 months)

Like us on Facebook @Lake Elmo Farmers Market and watch for updates!

Business and Community Working Together/ Lake Elmo Farmer's Market is a 501c3

The Sally Manzara Interpretive Nature Center is open every day
Visit <https://sminc-lake-elmo.org/> for details.

Are you looking for something to do this weekend? Check out our Saturday activities.

- 9:00 AM to 1:00 PM – Join us in celebrating Earth Day by planting trees or by spreading seeds of native grasses and flowers (a great family activity for younger ages). Bring gloves and a spade shovel. Email John at john.neitge@sminc-lake-elmo.org with names and age of volunteers. We will work from 9-noon with a picnic lunch at noon.
- 10:00 AM to 11:00 AM – Family Nature Exploration Saturdays – Learn about Earth Day by planting trees or spreading seeds of native grasses and flowers. All ages are welcome. Registration not required.

In addition to our ongoing weekly and monthly activities, we have several upcoming opportunities to highlight.

Saturday 4/23, 4/30 and May 7 from 9:00 AM to 1:00 PM– Join us in celebrating Earth Day by planting trees or by spreading seeds of native grasses and flowers (a great family activity for all ages). Bring gloves and a spade shovel. Email John at john.neitge@sminc-lake-elmo.org with names and age of volunteers. We will work from 9-noon with a picnic lunch at noon.

Wednesday 5/11 from 6:00 PM to 9:00 PM – Join us for our Annual Fundraiser Event "Keep Us Growing" at the Lake Elmo Event Center. An evening of community in support of the Sally Manzara Interpretive Nature Center with Guest Speaker and Minnesota author William Kent Krueger. Live and silent auction. See our website to purchase your tickets for a great meal and fun evening.

Tuesday 5/17 from 10:30 AM to 11:00 AM – Outdoor Nature Storytime. Lake Elmo Library will be hosting an Outdoor Nature Storytime the third Tuesday of each month from April – September. Recommended age 0-6. Registration not required.

Saturday 6/4 from 9:00 AM to 1:00 PM – Join us for our annual Family Nature Day. We will have education tables set up to tell visitors about various aspects of the Park. Additional information to follow. Great for all ages.

June, July and August – Join us for our Summer Day Camps and Wonder Wednesdays where kids of all ages experience the unique natural history and ongoing ecology of Sunfish Lake Park. See our web site for additional information and to register. Hurry, classes are almost full.

Nature Summer Camp Instructor Position

The Sally Manzara Interpretive Nature Center in Lake Elmo is seeking a Nature Summer Camp Instructor from May-August.

The role would entail instructing environmental education programs for 4-12 year olds. This position would involve collaboration with a Co-Instructor and support from the Program Coordinator in planning and carrying out 4 mini day camps and 8 one day camps called Wonder Wednesdays.

Activities will include the direct supervision of children in groups of up to 10 incorporating nature play and outdoor learning activities. Most of the time will be spent outdoors on the 1 acre nature center property as well as exploration within Sunfish Lake Park. Love of the outdoors and compassion for sharing this with children is a must! More information about camps at: <https://sminc-lake-elmo.org/summer-camp-registration-2022/>

Qualifications:

Teacher certified, or college student pursuing education/environmental education studies, teaching and summer camp experience preferred, experience with integrating Spanish into curriculum a plus.

Hours & Pay:

This position is estimated at 135 hours total between May-August at \$15/hour. First Aid and Nature Center training will be provided.

Sally Manzara Interpretive Nature Center <https://sminc-lake-elmo.org/>

The Sally Manzara Interpretive Nature Center Provides a place where people of all ages can learn about the unique natural history and ongoing ecology of Sunfish Lake Park. The nature center currently offers programs such as Family Nature Exploration events, Nature Storytime, kite flying, senior programs, and volunteer community events such as tree planting and invasive management serving all ages and abilities.

Apply: Submit your resume and cover letter to ami.voeltz@sminc-lake-elmo.org. Questions can also be directed to the Programs Coordinator, Ami Voeltz. Applicants will be considered on an ongoing basis until filled.



SALLY MANZARA INTERPRETIVE NATURE CENTER
2022 FUNDRAISER

KEEP US GROWING



WEDNESDAY MAY 11, 6:00 P.M.

LAKE ELMO INN EVENT CENTER



Special guest
WILLIAM KENT KRUEGER
AWARD WINNING MINNESOTA AUTHOR



**\$100 per plate, \$1,000 for table for 8,
\$1,200 for table for 8 + wine experience**

- dinner from the Lake Elmo Inn
- live auction of some amazing experiences
- silent auction
- camaraderie



**Purchase tickets online
at sminc-lake-elmo.org
or call 651-408-2838**



March and April 2022 at Lake Elmo Library

Please visit Lake Elmo Library as new books and opportunities arrive daily! For example, a new "Career Corner" is now available in the public computer room. Here you will find current job listings and other career development resources available in our area.

We welcome community families to visit the library for in-person Storytime on most Fridays at 10:30 a.m. Visit washcolib.org/storytime for the online calendar and for links to virtual storytimes and other resources. Kids can find fun activities in the children's area on their library visits.

Lake Elmo Area adults are invited to peruse our "Let's Make Stuff" crafting class offerings. Details about what we will be creating, event dates and times can be found at washcolib.org under "Events calendar." Classes are held monthly and require registration by phone or online.

Hours:

Monday 10-4

Tuesday, Wednesday, Thursday 12-8

Friday 10-4

Saturday 10-2

Lake Elmo Library

3537 Lake Elmo Avenue N

Lake Elmo MN 55042

651-275-8515

washcolib.org

Washington County Library Events

Public Facilities Project Update

- At the November 3 City Council Meeting the City Council awarded bids for the new City Center and Public Works Addition.
- At the January 4, 2022 City Council Meeting the City Council awarded bids for painting at the new City Center
- A groundbreaking ceremony is scheduled for April 30. More details to come.



CITY OF LAKE ELMO COMBINED CITY HALL & PUBLIC SAFETY FACILITY

The new Lake Elmo City Hall / Public Safety Facility combines City Hall staff and functions, the entire Fire Department, and a satellite office for the Washington County Sheriff's department. This co-location involves renovating and expanding the City-owned Brookfield Office building to concentrate civic resources into a single structure at the historic core of the city. In addition, the Public Works facility will also be expanded to accommodate City growth and expanded service needs.



TOTAL ANTICIPATED PROJECT COST: \$14,600,000
DESIGN COMPLETION: Late summer 2021
CONSTRUCTION COMPLETION: Fall of 2022





MEETING THE DEMANDS OF AN EVOLVING FIRE SERVICE

Lake Elmo currently has two fire stations, Fire Station #1 at 3510 Laverne Ave. N. and Fire Station #2 at 4259 Jamaica Ave. N. This project will consolidate these two stations into a single, state of the art station that will meet the needs of our community and firefighters today and into the future. The building is designed to accommodate increasing call volumes, meet the demands for training and to support our evolving role as all hazard responders.

Due to the changing environment of fire department staffing needs and the impacts of that in relation to incident response times and budget responsibility, the fire department is consolidating to a single station which will allow the department the ability to transition to a staffing model that provides 24/7 coverage from the single station. This change requires the updated facilities like staff dorm rooms, day room and kitchen area, fitness room, staff workspaces and offices.

Educational materials provided by the City of Lake Elmo

For more information, visit our website: www.lakeelmo.org or contact Kristina Handt, Administrator at KHandt@lakeelmo.org



The current fire stations are too small to accommodate modern apparatus and equipment and cannot provide adequate health protections for our firefighters.

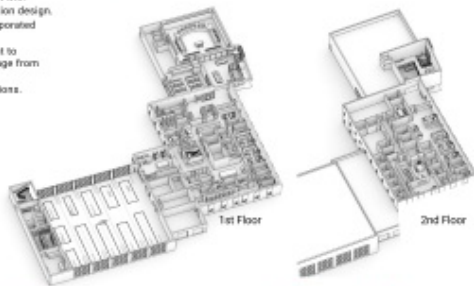
A FUNCTIONAL FIRE STATION

A new, single, state-of-the-art station will meet the needs of our community and firefighters today and into the future. Designed to accommodate our evolving role as all-hazard responders it will:

- Modernize our facilities following best practices in station design.
- Enhance firefighter training with training features incorporated into the building.
- The addition of living quarters will allow the department to transition to a staffing model that provides 24/7 coverage from the single station.
- Improve response times and overall department operations.

DESIGNED FOR FIREFIGHTER HEALTH AND SAFETY

- Distinct spaces to properly decontaminate gear and equipment. Focus to reduce staff exposure to firefighting carcinogens and other toxic materials.
- Properly ventilate the apparatus bay to reduce staff exposure to diesel exhaust and other harmful fumes.
- Space that supports the physical and mental health of staff.
- Clear separation between public and private spaces.



Lake Elmo City Hall, built in 1986, is a very small 2,806 SF. There are insufficient offices for all staff members and the restrooms are not accessible. The council chambers are small, do not provide sufficient space for department heads or members of the public, and lack modern technological updates. City staff have long outgrown this building and have since moved into the Brookfield Building located across the parking lot.

The Brookfield Building was purchased by the City in 2018 as a method of maintaining city functions next to the outgrown City Hall at a lower cost alternative to new construction. It was constructed in 1980 and will require a major overhaul to increase its useful life.

AN EXPANDED AND IMPROVED CITY HALL

- Improved service accessibility
- Community room available for public use
- New council chambers with updated technology
- Additional conference rooms
- Co-locate Washington County Sheriff staff
- Office space for growth of city staff
- Accessible restrooms.

