



fresh

Your Weekly Source for City News and Information

Public Meetings Next Week

- Planning Commission Meeting Monday, March 14 - 7:00PM
- City Council Meeting Tuesday, March 15 - 7:00PM



[City Agendas and Minutes](#)

Visit our website



[March 14 Planning Commission Meeting Agenda](#)



3800 Laverne Avenue North
Lake Elmo, MN 55042

(651) 747-3900
www.lakeelmo.org

NOTICE OF MEETING

The City of Lake Elmo
Planning Commission will conduct a meeting on
Monday March 14, 2022
at 7:00 p.m.

AGENDA

1. Pledge of Allegiance
2. Approve Agenda
3. Approve Minutes
 - a. January 24, 2022
4. Public Hearings

The City of Lake Elmo has initiated text amendments to the zoning ordinance, *Article XII – Urban Residential Districts*. The proposed text amendments will alter *Section 105.12.700 – Purpose And District Descriptions* and *Section 105.12.720 – Lot Dimensions And Building Bulk Requirements*. City Staff is proposing to increase the maximum allowed density in the Medium Density Residential District (MDR) from seven dwelling units per acre to eight dwelling units per acre and changing the minimum lot areas for single-family attached units in the MDR and High Density Residential District (HDR) and changing the minimum land area for multifamily dwellings in the MDR District. (*Table 10-2: Lot Dimension and Setback Requirements, Residential Districts*). The text amendments are proposed in order to align with existing land use guidance in the Comprehensive Plan.

5. New/Unfinished Business: N/A
6. Communications/Updates
 - a. City Council Update
 - 3-1-2022 – Approved extension to the deadline for recording a plat for Enterprise Rent-a-Car
 - 1-4-2022 – Approved Variance request for a 195-foot setback from the OHWL of Lake Elmo for PID 13.029.21.33.0042
 - b. Staff Updates
 1. New planner to start April 4.
 - c. Upcoming PC Meetings:
 1. March 28, 2022
 2. April 11, 2022
7. Adjourn

***Note: Every effort will be made to accommodate person or persons that need special considerations to attend this meeting due to a health condition or disability. Please contact the Lake Elmo City Clerk if you are in need of special accommodations.

Meeting Materials Can Be Accessed Here

March 15 City Council Meeting Agenda



NOTICE OF MEETING

City Council Meeting

Tuesday, March 15, 2022 7:00 P.M.

City of Lake Elmo | 3800 Laverne Avenue North

AGENDA

A. Call to Order/Pledge of Allegiance

B. Approval of Agenda

C. Approval of Minutes

1. March 1, 2022

D. Public Comments/Inquiries

E. Presentations

F. Consent Agenda

2. Approve Payment of Disbursements and Payroll
3. Approve Redistricting Resolution – *Resolution 2022-028*
4. Approve Resolution of Support - Manning Ave (CSAH15) and 30th St. Intersection Improvements – *Resolution 2022-024*
5. Authorize Engineering Services for Well No. 1 Abandonment and Pumphouse Demolition
6. Approve Change Order No. 1 for Whistling Valley Street and Utility Improvements
7. Approve UPRR Drainage Encroachment Agreement and Fee for the Old Village Phase 5 and 6 Improvements
8. Accept 4th Quarter 2021 Financials
9. Approve Step Increase for Planning Director
10. Approve Fire Relief Bylaws
11. Approve Hire of Firefighters
12. Approve Promotion of 3 Probationary Firefighters
13. Approve National Night Out Special Event Permit
14. Approve 2022 Labor Agreement with Local 49ers
15. Approve Cable Caster Agreement
16. Approve Wildflower 4th Addition Final Plat Time Extension

G. Regular Agenda

17. Public Improvement Hearing. Council orders the Improvement for the Parkview-Cardinal Neighborhood Street and Utility Improvements – *Resolution 2022-025*
18. One Energy Solar Conditional Use Permit for the construction and operation of a solar farm on the property located at 10755 50th Street N (PID#1102921110003) – *Resolution 2022-026*
19. Well 4 Repairs
20. 2023 Budget Calendar
21. Resolution Supporting Legislative Efforts to Ensure a Sustainable, Safe and Reliable Water Supply- *Resolution 2022-027*

H. Council Reports

I. Staff Reports

J. Adjourn

Meeting Materials Can Be Accessed Here

LAKE ELMO NOTICE OF PUBLIC HEARING

DATE: Monday, March 28, 2022
TIME: 7:00 p.m.
PLACE: Lake Elmo City Hall
3800 Laverne Avenue North
Lake Elmo MN 55042
Phone: 651-747-3900

PURPOSE: The Lake Elmo Planning Commission will be holding a public hearing to consider the following item:

VARIANCE REVIEW: Applicant Cassandra Banna, owner of the property located at 9404 Lake Jane Trail N, is seeking a 6-foot side yard setback variance. The applicant proposes to expand their living space by converting the current garage into living space and building a new garage addition directly in front of the existing garage. To build the addition along the existing driveway line, a 6-foot variance on the southwest side of the property is necessary.

All persons wishing to be heard on the above item should attend the meeting or submit their comments before the meeting to city staff. Written comments may be submitted to the city by mail no later than 5:00 p.m. on Wednesday, March 23, 2022; or emailed to Molly Just at mjust@lakeelmo.org no later than noon on the day of the meeting. Materials about the above items are available for review by request – please contact Molly Just, Planning Director (651-747-3912) for more information.

Molly Just, Lake Elmo Planning Director



2022 Spring Road Restrictions



Spring Load Restrictions begin March 16th

Weight Restrictions (Seasonal)

Weight Restrictions

Axle weight limits are restricted on certain streets within the City of Lake Elmo to protect the streets from damage when road and weather conditions warrant in accordance with State & City regulations.

All City streets are limited to **SEVEN TON AXLE** per axle weight limit unless otherwise posted. Residents are encouraged to plan ahead for moving or construction projects during the spring thaw season since weight restrictions will be enforced & large trucks will not be allowed on restricted streets.

Dates

Weight restrictions take effect during the spring thaw season, which is usually around March 1st to May 15th, dependent upon the weather. City of Lake Elmo follows the Seasonal Load Limits established by the State of Minnesota. Check the MN DOT website for dates.
http://dotapp7.dot.state.mn.us/research/seasonal_load_limits/sllindex.asp

Exemptions

No exemptions or permits are given during this time period, except for vehicles responding for emergency situation.

Streets Regulated

The City of Lake Elmo only regulates the city streets.

All County roads are regulated by Washington County and all Highways are regulated by the State of Minnesota. Private roads are not regulated by the City, but by the homeowners associations or designated responsible party. The City does not maintain any information on contracts for private roads.

The City of Lake Elmo is on Nextdoor!

In an effort to reach as much of the community as possible we've joined Nextdoor. We will use our public agency page to post news and important updates for residents.

[Find us here!](#)



Sydney Peterson added to 2022 Paralympic Games Roster

Lake Elmo resident Sydney Peterson was added to the Team USA roster for the Winter Paralympic Games Beijing 2022. Peterson has so far won a silver and bronze medal, and competes tonight in the Women's middle distance free standing cross-country ski final.

[Full Article](#)



Business Retention and Expansion Program

The Lake Elmo Economic Development Authority (LEEDA) will be kicking off a Business Retention and Expansion Program in March. LEEDA members will be reaching out to schedule visits with members of our business community to learn more about their business, what's going well, what could be done differently and how LEEDA can help them continue to grow and prosper in Lake Elmo.

With around 300 businesses in Lake Elmo and only 6 LEEDA commissioners, this campaign will take many months and likely continue into 2023. Commissioners will be focusing on businesses in the Old Village area first and then moving towards the I-94 corridor later this year. If you have any questions or would like to schedule a visit contact Kristina Handt at 651.747.3905 or khandt@lakeelmo.org



Need a Trusted **Business Advisor?**

This program provides free and confidential one-on-one assistance from MCCD's experienced staff, customized to meet the specific needs of each entrepreneur in the creation, growth, and success of their business.

Technical Assistance & Lending

- Business & strategic planning
- Marketing & communications planning
- Regulatory, tax, licensing, & accounting training
- Financial assessment
- Referrals to critical professional services
- Access to capital



We want to help you succeed!

To learn more about a free personalized plan for your business contact:



info@mccdmn.org
(612) 789-7337

www.mccdmn.org/open-to-business



Water Rebate Programs In Lake Elmo

It is not too early to think about how you irrigate this summer. The City of Lake Elmo offers rebates for smart irrigation controllers up to \$200, and rebates for efficient toilets up to \$100. Find out more [here](#).

REMINDER: Winter Parking Ordinance In Effect

Winter parking ordinance prohibits parking on Lake Elmo Streets from Nov. 1 through March 31 between 2:00 AM and 7:00 AM.

Public Works can't clear the roadways with cars blocking their paths!



Public Works Crews have begun filling potholes on City Streets. Feel free to report potholes by calling Public Works at 651-747-3940. Please slow down when approaching street crews. Thank you for your cooperation.





Eliminating Obstructed Fire Hydrants



To help protect the community, residents are being asked to help keep fire hydrants clear and accessible. Having timely and efficient access to a water supply is critically important for fighting fires. The longer it takes to access the supply, the quicker a fire can spread and the more dangerous it will be for responders. Obstructions cause unnecessary delays when firefighters are forced to take time to locate hidden hydrants, slowing their response.

Many hydrants are hidden by weeds, shrubbery, flowerbeds, posts, fences, snow and other obstructions. Residents are urged to check to see if they have a hydrant in their front yard or somewhere on their property and to “adopt” it, keeping it clear. A path from the street and an area three feet around the hydrant will allow quick access for firefighters and for public works staff completing maintenance.

Please help protect the city, its people and their homes.

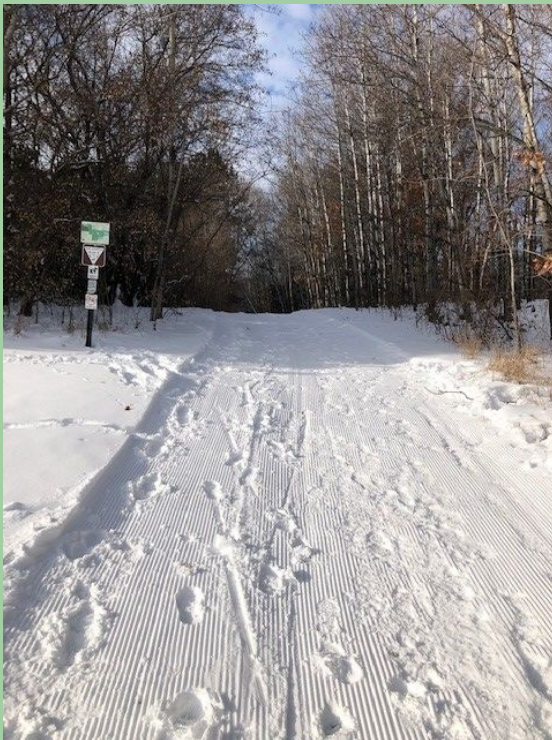
Lake Elmo Public Works



**LIONS PARK ICE RINKS ARE NOW CLOSED FOR THE SEASON
DUE TO THE WARMING TEMPERATURE**

See you next season!

Lake Elmo Public Works



Trails are groomed for winter fun in Sunfish Lake Park and Reid Park



The City of Lake Elmo is Seeking Applicants for Multiple Committees

The City of Lake Elmo is seeking interested residents to serve on two committees:

- EDA
- Planning Commission

[More Information Available Here](#)

Where & How to Place Your Garbage Can

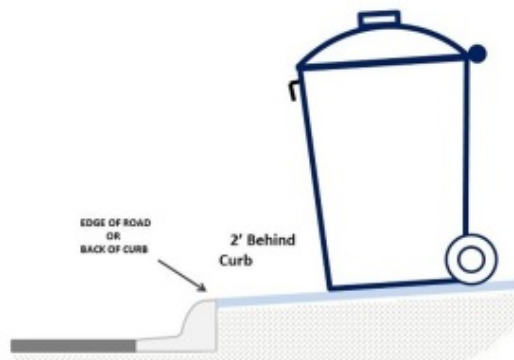
Garbage and recycling containers need to be placed off the street per MN State Statute 160.2715 (A)(2)

Please Do not place garbage cans in the street. We realize this area is an enticing location to place garbage cans, but it creates a hazard as it narrows the travel lanes creating safety concerns. The cans could get hit by vehicles or create visibility issues. Most garbage trucks are equipped with a hydraulic extending arm that grasps garbage cans. It is recommended that garbage cans be placed at least 3 to 5 feet off the edge of pavement, into your driveway, so they are out of the way of traffic and maintenance vehicles.



Retrieve your garbage cans soon after collection. Garbage cans often sit at the roadside on collection day until the evening. Empty cans are vulnerable to winds and road maintenance operations and could cause a hazard if knocked into the roadway. Prompt removal of empty containers is recommended.

These tips can make garbage collection day safer and easier for all of us. The City of Lake Elmo thanks you for taking time to read this message!





The City of Lake Elmo is Accepting Applications for the following positions:

- Public Works Seasonal
- Building Inspector

[Visit our website for information and application materials.](#)



LAKE ELMO FARMER'S MARKET

Seeking YOUTH Vendors for the 2022 Season

Market runs weekly beginning Saturday June 18th – September 3rd from 9-1pm

The market is offering an amazing opportunity for Youth in the community this summer, a booth dedicated to Youth Vendors/ Entrepreneurs!

Youth vendors may include: youth organizations (ie: Scouts), fundraising efforts (ie: PTO), youth farmers, young entrepreneurs looking for an opportunity within the community to sell their amazing creations/inventions, etc.

If you or someone you know is interested, please contact Jill (Market Manager) for more information about specific guidelines for youth vendors, application process and to answer any additional questions.

651-261-4493 or pottingshedpottery@gmail.com

See YOU at the market!

(in less than 5 months)

Like us on Facebook @Lake Elmo Farmers Market and watch for updates!

Business and Community Working Together/ Lake Elmo Farmer's Market is a 501c3

Washington County Sheriff's Update

Nothing can ruin the Christmas spirit faster than becoming the victim of a crime. The Washington County Sheriff's Office has had an uptick in crime in several new developments. All the crimes have been opportunity crimes, meaning it has been easy for criminals. Leaving keys or key fobs in the car, valuables and money in unlocked vehicles is too tempting for the criminals. All the vehicles that were stolen from our city had the keys left in them. No one is hot wiring vehicles or punching ignitions. The break in to vehicles are also not occurring by breaking windows. All

vehicles have been left unlocked. Think of everything in your car in terms of cash value. If you would not leave the equivalent in cash out, do not leave it out in the form you bought it.

This holiday season, the Sheriff's office would like to remind all residents of the following holiday crime prevention tips:

- Lock your vehicle
- Do not leave keys/key fobs in the vehicle
- Do not leave valuables in plain view
- Park in well-lit areas
- Do not leave any personal identifying papers in your vehicle
- Do not leave a vehicle running while unattended.
- Shut and secure garage doors when not in use.

Please contact the Washington County Sheriff's Office if you see a suspicious vehicle or person in your neighborhood. You can call 911 or the non-emergency number, 651-439-9381.

SGT. Erickson

Be SALT SMART!



WATER SOFTENERS

Water softeners account for up to 65% of the chloride that is discharged from municipal wastewater treatment plants statewide.

Hard water is pervasive in our state; thus, water softeners are a common fixture in many Minnesota homes. Conventional water softeners treat hard water by exchanging the hard minerals with sodium and potassium ions. When the system is 'full,' it resets or regenerates by sending a pulse of salt water through the system. Municipal wastewater treatment plants do NOT treat for chloride, meaning that salty water is then discharged to our waterways.

How do I reduce my chloride footprint?

Do you need to soften your water? If you live in a city, check to see whether your water utility softens the water before distribution. This eliminates or decreases the need for a water softener.

Optimize your water softener settings: If you have an older water softener, regeneration generally happens on a timer versus by water use – extending the timing between regeneration cycles will reduce the amount of wastewater produced.

Replace your water softener: Newer water softener models regenerate based on water use versus a timer, using less salt and water.

Don't soften ALL your water: Only soften the water from your hot water taps versus cold water drinking taps.

Reduce your overall water use: Cutting back lessens demand for softened water and conserves our water resources!

**Using more than 1
40-lb bag of salt a
month?**

Check with a water
professional to
optimize softener
efficiency!



March and April 2022 at Lake Elmo Library

Please visit Lake Elmo Library as new books and opportunities arrive daily! For example, a new "Career Corner" is now available in the public computer room. Here you will find current job listings and other career development resources available in our area.

We welcome community families to visit the library for in-person Storytime on most Fridays at 10:30 a.m. Visit washcolib.org/storytime for the online calendar and for links to virtual storytimes and other resources. Kids can find fun activities in the children's area on their library visits.

Lake Elmo Area adults are invited to peruse our "Let's Make Stuff" crafting class offerings. Details about what we will be creating, event dates and times can be found at washcolib.org under "Events calendar." Classes are held monthly and require registration by phone or online.

Hours:

Monday 10-4

Tuesday, Wednesday, Thursday 12-8

Friday 10-4

Saturday 10-2

Lake Elmo Library

3537 Lake Elmo Avenue N

Lake Elmo MN 55042

651-275-8515

washcolib.org

Washington County Library Events

The Sally Manzara Interpretive Nature Center is Open Every Day
Monday through Saturday 9 AM – 4 PM
Sunday 10 AM – 4 PM
Visit <https://sminc-lake-elmo.org/> for more details.

In addition to our **Family Nature Exploration Saturdays**, join us for our upcoming March Events. No registration is needed, just show up to explore nature!

Buckthorn Removal Saturday

Buckthorn Removal Event is on Saturday March 12th at 9:30 AM, weather permitting. Come and lend a hand or two. We have the loppers, gloves, and a hot drink afterwards.

The Sally Manzara Interpretive Nature Center is open every day
Visit <https://sminc-lake-elmo.org/> for details.

SAVE THE DATE

For our annual benefit dinner and auction
"HELP US KEEP GROWING"

Wednesday May 11th, 2022
Lake Elmo Inn Event Center
6 to 9 PM

An evening of community in support of the
Sally Manzara Interpretive Nature Center
with Guest Speaker and Minnesota author

Kent Krueger

Purchase your tickets or sponsor a table for a great meal and fun evening.
Visit <https://sminc-lake-elmo.org/fundraising-dinner/>

In addition to our **Family Nature Exploration Saturdays**, join us for our upcoming March Events. No registration is needed, just show up to explore nature!

Kite Flying Event

Kite Flying Event is on Saturday March 5th from Noon to 2 PM, bring your own kite, or fly one of ours. Weather permitting – wind is needed!

Buckthorn Removal Saturday

Buckthorn Removal Event is on Saturday March 12th at 9:30 AM, weather permitting. Come and lend a hand or two. We have the loppers, gloves, and a hot drink afterwards.



Sally Manzara Interpretive Nature Center (SMINC)

Family Nature Exploration Saturdays 2022

10-11am



Suggested \$5 donation/family at the door will help support our programming.

Most events are held outdoors, please dress appropriately for the weather.

The Sally Manzara Interpretive Nature Center is located in Sunfish Lake Park in Lake Elmo, MN

<https://sminc-lake-elmo.org/>

www.facebook.com/sunfishlakepark



March 5 Make a Hiking Stick

Get ready for spring hiking!

Join woodworker John Neitge to make your very own hiking stick with a wrapped grip handle. All Ages. \$5/child for supplies.



March 12 Spring Storytime

Join a librarian from Lake Elmo

Library for a storytime about the changes coming in spring. All ages.



March 19 Nature-based Handwriting

Angela Mann OT from HOPE Grove will share about the

foundations of handwriting and will offer nature based writing activities. All ages.



March 26 Nature Painting

Hike to find inspiration in nature

and then create a painting with artist Brianna Siepel. Wear outdoor gear and clothing to paint. All ages. \$5/child for supplies.



Register now! Summer Camps

Get your kids outdoors in nature this summer! Learn more about our summer camps for ages 5-14:

<https://sminc-lake-elmo.org/summer-camp-registration-2022/>



SALLY MANZARA INTERPRETIVE NATURE CENTER
2022 FUNDRAISER

KEEP US GROWING



WEDNESDAY MAY 11, 6:00 P.M.

LAKE ELMO INN EVENT CENTER



Special guest
WILLIAM KENT KRUEGER
AWARD WINNING MINNESOTA AUTHOR



**\$100 per plate, \$1,000 for table for 8,
\$1,200 for table for 8 + wine experience**

- dinner from the Lake Elmo Inn
- live auction of some amazing experiences
- silent auction
- camaraderie



**Purchase tickets online
at sminc-lake-elmo.org
or call 651-408-2838**

SALLY MANZARA INTERPRETIVE NATURE CENTER FOR KIDS! SUMMER CAMPS



where kids of all ages experience the unique natural history and ongoing ecology of Sunfish Lake Park



Sally Manzara Interpretive Nature Center is located next to Sunfish Lake Park in Lake Elmo, Minnesota. The park offers 284 acres of natural area and over 5 miles of trails through forest, wetlands, and prairie.

SUMMER DAY CAMPS



Summer Day Camps are for kids **ages 4-14** and run **Monday - Thursday mornings, 9:00 a.m. - 12:00 p.m.**

Camps are run by instructors based out of the SMINC Nature Center and include hikes and activities in Sunfish Lake Park in Lake Elmo. Camps are **\$175 per session**. Participants bring their own backpack with a mask, snack, water bottle, hat, sunscreen, bug spray and change of clothes if needed. Maximum of 10 campers per camp.

CRITTER CAMP
June 13 - 16
for 4-6 year olds

OUTDOOR ADVENTURES
July 11-14
for 9-12 year olds

NATURE MURAL ART CAMP
June 20-23
for 9-14 year olds

BEES & BUTTERFLIES
August 8-11
for 6-8 year olds

WONDER WEDNESDAYS

Kids ages 5-10 can enjoy a full day of outdoor adventures on select **Wednesdays** from **9:00 a.m. - 3:00 p.m.** and are **\$70 per date**. Participants bring their own backpack with a mask, snack, lunch, water bottle, hat, sunscreen, bug spray and change of clothes if needed. Maximum of 10 campers per camp. Campers will explore the outdoors with different themes including nature art, fishing, bees, birds, hikes and many more adventures enriched with Spanish language. Groups will be organized by age.

June 22
ALL ABOUT BIRDS

July 27
RAPTORS

June 29
FISHING

August 3
NATURE ART

July 20
WATER PLAY

August 17
POLLINATORS



Sally Manzara Interpretive Nature Center is operated by Friends of Lake Elmo's Sunfish Lake Park, a 501(c)(3) nonprofit.

Contact us: 651-408-2838 | camps@sminc-lake-elmo.org

Find us online: sminc-lake-elmo.org/summer-camp-registration-2022/

Public Facilities Project Update

- At the November 3 City Council Meeting the City Council awarded bids for the new City Center and Public Works Addition.
- At the January 4, 2022 City Council Meeting the City Council awarded bids for painting at the new City Center

Regular updates and documents are available [here](#).



- 1 New City Hall Entrance
- 2 New Fire Station Expansion
- 3 Council Chambers/Community room addition
- 4 Parking
- 5 Fire Department Parking
- 6 City Hall/Sheriff
- 7 Laverne Avenue

LEO A DALY

CITY OF LAKE ELMO COMBINED CITY HALL & PUBLIC SAFETY FACILITY

The new Lake Elmo City Hall / Public Safety Facility combines City Hall staff and functions, the entire Fire Department, and a satellite office for the Washington County Sheriff's department. This co-location involves renovating and expanding the City-owned Brookfield Office building to concentrate civic resources into a single structure at the historic core of the city. In addition, the Public Works facility will also be expanded to accommodate City growth and expanded service needs.



TOTAL ANTICIPATED PROJECT COST: \$14,600,000
DESIGN COMPLETION: Late summer 2021
CONSTRUCTION COMPLETION: Fall of 2022





MEETING THE DEMANDS OF AN EVOLVING FIRE SERVICE

Lake Elmo currently has two fire stations, Fire Station #1 at 3510 Laverne Ave. N. and Fire Station #2 at 4259 Jamaica Ave. N. This project will consolidate these two stations into a single, state-of-the-art station that will meet the needs of our community and firefighters today and into the future. The building is designed to accommodate increasing call volumes, meet the demands for training and to support our evolving role as all hazard responders.

Due to the changing environment of fire department staffing needs and the impacts of that in relation to incident response times and budget responsibility, the fire department is consolidating to a single station which will allow the department the ability to transition to a staffing model that provides 24/7 coverage from the single station. This change requires the updated facilities like staff dorm rooms, day room and kitchen area, fitness room, staff workspaces and offices.

Educational materials provided by the City of Lake Elmo
 For more information, visit our website: www.lakeelmo.org or contact Kristina Handt, Administrator at KHandt@lakeelmo.org



The current fire stations are too small to accommodate modern apparatus and equipment and cannot provide adequate health protections for our firefighters.

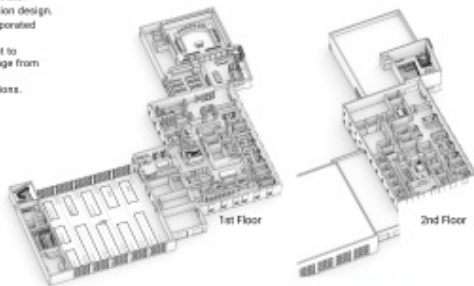
A FUNCTIONAL FIRE STATION

A new, single, state-of-the-art station will meet the needs of our community and firefighters today and into the future. Designed to accommodate our evolving role as all-hazard responders it will:

- Modernize our facilities following best practices in station design.
- Enhance firefighter training with training features incorporated into the building.
- The addition of living quarters will allow the department to transition to a staffing model that provides 24/7 coverage from the single station.
- Improve response times and overall department operations.

DESIGNED FOR FIREFIGHTER HEALTH AND SAFETY

- Distinct spaces to properly decontaminate gear and equipment. Focus to reduce staff exposure to firefighting carcinogens and other toxic materials.
- Properly ventilate the apparatus bay to reduce staff exposure to diesel exhaust and other harmful fumes.
- Space that supports the physical and mental health of staff.
- Clear separation between public and private spaces.



Lake Elmo City Hall, built in 1986, is a very small 2,806 SF. There are insufficient offices for all staff members and the restrooms are not accessible. The council chambers are small, do not provide sufficient space for department heads or members of the public, and lack modern technological updates. City staff have long outgrown this building and have since moved into the Brookfield Building located across the parking lot.

The Brookfield Building was purchased by the City in 2018 as a method of maintaining city functions next to the outgrown City Hall at a lower cost alternative to new construction. It was constructed in 1980 and will require a major overhaul to increase its useful life.

AN EXPANDED AND IMPROVED CITY HALL

- Improved service accessibility
- Community room available for public use
- New council chambers with updated technology
- Additional conference rooms
- Co-locate Washington County Sheriff staff
- Office space for growth of city staff
- Accessible restrooms.

