



fresh

Your Weekly Source for City News and Information

Public Meetings Next Week

- Planning Commission Monday, July 25th 7:00 p.m.

[City Agendas and Minutes](#)



Visit our website



The Brookfield building at 3880 Laverne Ave is closed and under construction. All City Services are available at City Hall, 3800 Laverne

Please drive slowly and watch for construction activity



NOTICE OF MEETING

The City of Lake Elmo
Planning Commission will conduct a meeting on
Monday July 25, 2022
at 7:00 p.m.

AGENDA

1. Pledge of Allegiance
2. Approve Agenda
3. Approve Minutes - 7-11-22
4. Public Hearing

Zoning Map Amendment, Preliminary Plat & Planned Unit Development (PUD) Inland Development Partners has submitted application for a 244 unit townhome project on the south side of the intersection of 39th Street and Stillwater Boulevard (PID 1302921240028). Applicant would use a portion of VFW Park for roadway access to the project.

5. New Business

Advisory Communication to City Council – Commissioner Graen has drafted an advisory communication to the City Council. An official communication from the Planning Commission must be from the entire commission.

6. Communications/Updates - City Council Updates

i. July 12 Workshop

- Impervious Surface. Directed staff to draft an update to the definition of impervious surface to eliminate examples and directed staff to revise the allowable impervious on unsewered lots in the Shoreland Zone to be consistent with the DNR Model Shoreland Zoning Ordinance.
- MDR/HDR. Instead of adopting increased setbacks only on named streets in the south planning area the Council directed staff to bring forward a text amendment requiring an increased setback for all residential development fronting a public street in the South Planning Area except that zoned GCC and LDR.

ii. July 19 Meeting

- Approved Side Yard Setback Variance Request for 1567 Ivory Ave N
- Tabled Preliminary Plat and PUD, Zoning Map Amendment and Conditional Use Permit for 9450 Hudson
- Adopted Zoning Text Amendment – Limit residential uses to no more than 80% in Mixed-Use Commercial and Mixed-Use Business Park Districts

7. Adjourn

***Note: Every effort will be made to accommodate person or persons that need special considerations to attend this meeting due to a health condition or disability. Please contact the Lake Elmo City Clerk if you are in need of special accommodations.

The City of Lake Elmo is looking for your input at its **AUGUST 15th, 2022 Parks Commission meeting!** We want to know what residents would like to see as future improvements at Kleis Park and Pebble Park. Your input is valuable to us in providing the best park experience for the community of Lake Elmo! The meeting information is below. If you are unable to attend the meeting, please submit written or electronic comments no later than 5:00 pm the day of the meeting to Ben Hetzel, Lake Elmo City Planner at bhetzel@lakeelmo.org or 651-747-3911. We look forward to hearing from you!

Meeting Time: 6:30 PM

Location: Lake Elmo City Hall, 3800 Laverne Avenue North, Lake Elmo, MN 55042

Kleis Park

Pebble Park



National Night Out Tuesday, August 2, 2022

A community wide celebration will be held in Lions Park from 6:00 p.m. to 8:00 p.m. Individual neighborhoods that would like to request a visit by a Washington County Sheriff's Deputy may register here: [Sheriff](#)



Hwy 36 local access changes between Hilton Trail and Stillwater Blvd. begin Sunday, July 24



Drivers traveling between Pine Springs and Stillwater will experience delays on Sunday, July 24 as traffic is shifted from the westbound traffic lanes to the eastbound traffic lanes. This traffic shift will change access to some of the local neighborhoods along Hwy 36 between Hilton Trail and Stillwater Blvd.

To help keep drivers and workers safe, there will be no access to or from westbound Hwy 36 at Manning Avenue. In addition, these intersections along Hwy 36 will remain closed:

- Keats Ave.
- Lake Elmo Ave.

Monday morning, July 25, access from Highlands Trail and Demontreville Trail to eastbound Hwy

36 will reopen.

Area residents can continue using Hilton Trail and Stillwater Blvd. to access Hwy 36 through late Aug. Drivers can take these roads to 75th St. N. to access residences and businesses on the north side of Hwy 36, or to connect with streets that are temporarily closed at Hwy 36.

Travelers looking to access businesses and residences on the south side of Hwy 36, or to connect with streets that are temporarily closed at Hwy 36, can continue using I-694 and Stillwater Blvd. to connect with 34 St. N./Stillwater Blvd.

Upcoming activities

Beginning at 12:01 a.m. on Tuesday, July 26, the southbound ramp from Hwy 61 to eastbound 36 will be closed until 5 a.m. Tuesday, August 2nd while crews complete concrete work along Hwy 36 near this ramp. Please use alternate routes to access eastbound Hwy 36 from southbound Hwy 61.

MnDOT urges motorists to always be attentive, drive with caution, slow down in work zones where workers are present. Please follow the posted detour route and avoid traveling through residential neighborhoods for the safety of those that live in the area.

All construction activities and traffic impacts are weather dependent and subject to change.

MnDOT urges motorists to always be attentive, drive with caution, slow down in work zones where workers are present. Please avoid traveling through residential neighborhoods for the safety of those that live in the area.

All construction activities and traffic impacts are weather dependent and subject to change.

For more information on the Highway 36 Project click here: [MNDOT](#)



Metro - I-94 Oakdale to St. Croix: 2022-2025 construction

Eastbound I-94 lane closure in Washington County begins July 18

Beginning at 5 a.m. Mon, July 18, eastbound I-94 will be reduced to two lanes of traffic between Woodbury Dr. and the St. Croix River in the east metro through late October.

Construction crews will be reinforcing the road shoulders along this stretch of eastbound I-94 in preparation for pavement resurfacing in 2023. Shoulder reinforcement includes removing the current pavement and replacing it with a thicker layer of pavement that can withstand high traffic volumes. Crews will use the road shoulders to maintain two lanes of traffic in each direction on I-94 during next year's construction.

No ramp closures are planned as part of this work in 2022.

Advance warning of stopped traffic on I-94

This year, MnDOT will also install traffic monitoring sensors along I-94 within the project area. The sensors will alert motorists to slow or stopped traffic ahead via roadside electronic message boards. Their purpose is to help keep motorists, passengers, and construction crews safe in work zones. During construction, plan your route in advance and expect delays during peak travel times. All construction activities and traffic impacts are weather and schedule permitting and subject to change.

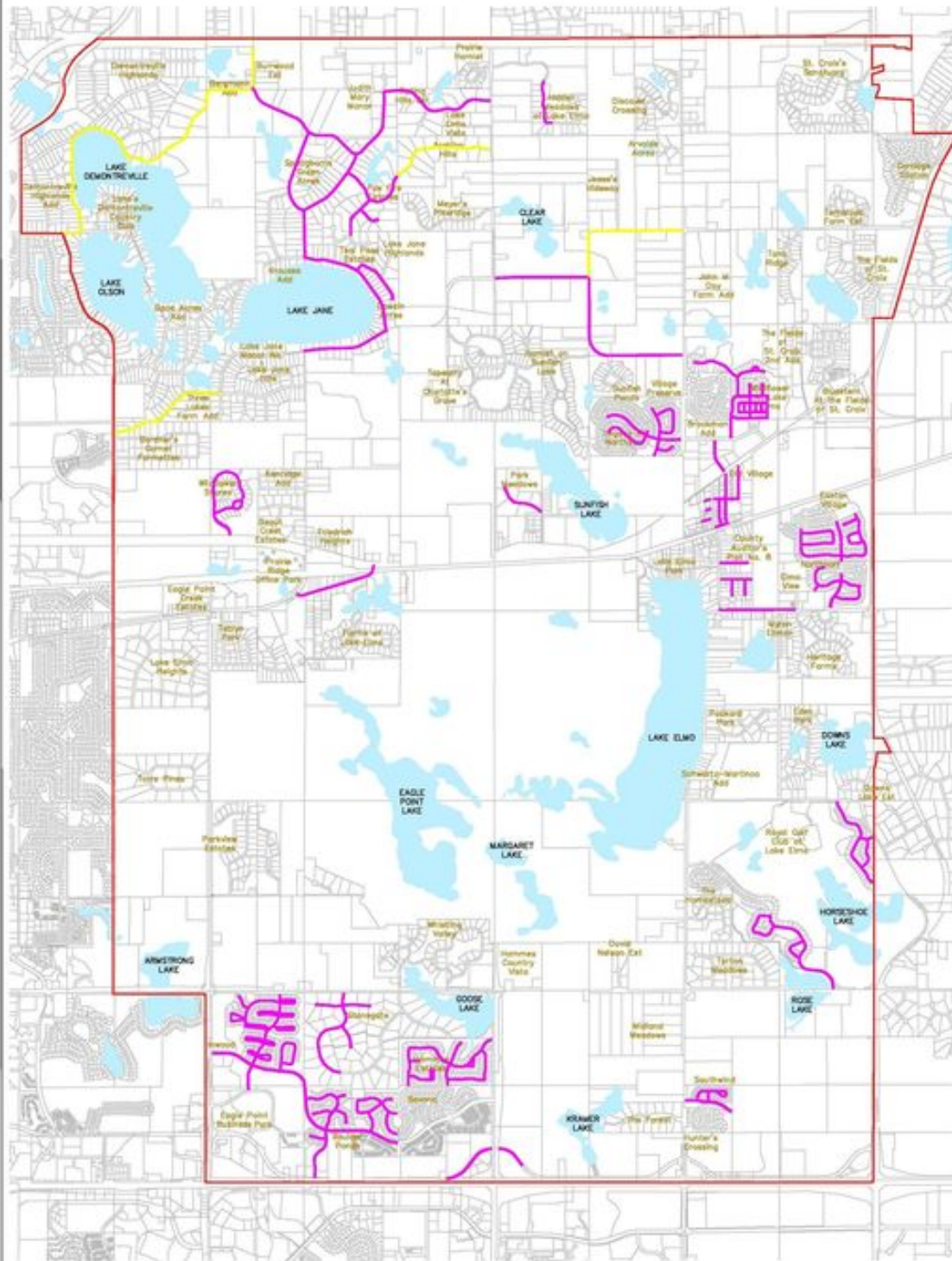
More about this project

I-94 between Hwy 120/Century Ave. and the St. Croix River will undergo a two-and-a-half-year pavement improvement construction project beginning in July 2022. The work will improve safety, traffic flow and ride smoothness. Construction will occur in three stages with most of the work happening in 2023 and 2024.

For more information, including construction schedule and upcoming traffic impacts, visit the [I-94 Oakdale to St. Croix project webpage](#).

2022 Seal Coating began Monday, July 18th. This year we are tackling more than 30 miles of city streets in our annual maintenance program. If you live along one of the pink highlighted streets below you received mailed notification about parking and irrigation restrictions and the plan to sweep excess aggregate along with more details on the project. You can also access this information on the project website:
http://www.lakeelmo.org/.../2022_street_maintenance.

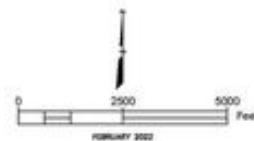
CITY OF LAKE ELMO



LEGEND

- 2022 CRACK SEAL & SEAL COAT
- 2022 CRACK SEAL ONLY

2022 STREET MAINTENANCE MAP



Watering Restrictions

Reminder: City ordinance allows for outdoor watering between the hours of **6PM and 5AM** and follows an **odd/even schedule**. Properties with even-numbered

postal addresses may water, sprinkle, or irrigate their lawns only on even-numbered days. Properties with odd-numbers postal addresses may water only on odd-numbered days.

To help reduce water usage, and your water bill, the City of Lake Elmo is contributing up to 90% of the cost of smart irrigation controller devices. These smart controller devices can help save a household as much as 10,000 gallons of water per year!

[Find out more here](#)

CITY OF LAKE ELMO NOTICE OF CANDIDATE FILING FOR MUNICIPAL OFFICE

NOTICE IS HEREBY GIVEN that the period for filing Affidavits of Candidacy for Municipal Offices to be elected at the General Election on November 8, 2022, will open on TUESDAY, AUGUST 2, 2022, AND WILL CLOSE ON TUESDAY, AUGUST 16, 2022 AT 5:00 PM for the offices of:

Two (2) Council Members for a term of four (4) years.

Affidavits of candidacy are available from the City Clerk in person at City Hall, 3800 Laverne Ave. N. or by calling 651.747.3900. Filing fee is \$2.00.



Election Judges Needed!

We are in need of a few more election judges to serve in the Primary and General Elections this year. Judges are paid \$11 per hour and training is provided along with meals and snacks.

Requirements:

You must be eligible to vote in Minnesota and you must be at least 18 years old on Election Day. If you are ages 16 and 17 you may serve as a Trainee Election Judge.

If you are interested in serving as an Election Judge, please call Deputy City Clerk Rebecca McGuire at 651-747-3900 or email rmcguire@lakeelmo.org. We look forward to hearing from you!

2022 Absentee Voting

In-Person Absentee & Ballot Drop-Off Hours

- Monday—Friday, June 24—August 5: 8:00AM—4:30PM
- Saturday, August 6: 8:00AM—3:00PM
- Monday, August 8: 8:00AM—5:00PM

In-Person Absentee & Ballot Drop-Off Locations

- Central Park/R.H Stafford Library, Lower Level, 8595 Central Pk Pl, Woodbury
- Cottage Grove Service Center, 13000 Ravine Pkwy, Cottage Grove
- Headwaters Service Center, 19955 Forest Rd N, Forest Lake
- Oakdale City Hall, 1584 Hadley Ave N, Oakdale
- Washington County Gov't Center, 14949 62nd St N, Stillwater

Who may vote early?

Any **Washington County** resident who is a U.S. Citizen and will be 18 years old by election day.

May I drop off my or someone else's voted absentee ballot that was received in the mail?

Yes. You may drop off your own and three other people's ballots in any given election. When dropping off someone else's ballot, you must show photo ID with your name and signature and sign a log.

When will my absentee ballot be counted?

The opening and counting of absentee ballots will begin after 5PM on August 2nd and continue through Election Day. Results are reported on Election Day.



Track Your Ballot



Where Do I Vote?



More Election Info

Washington County Elections
14949 62nd St N
Stillwater, MN 55082
651-430-6790



The Lake Elmo Fire Department is Recruiting!

We're currently hiring paid-on-call firefighters. We offer great benefits including: paid training, pension, state-of-the-art equipment, and the opportunity to serve your community. Individuals with Fire and EMT certifications are encouraged to apply. Training is provided for those willing to learn. No previous experience necessary.

We want to provide you with all of the information to make this important decision.

If you would like to know more about this position, please contact Fire Chief Dustin

Kalis at 651-747-3933 or dkalis@lakeelmo.org.

Applications due by Friday, August 26, 2022

Application and additional information can be found here:

http://www.lakeelmo.org/departments/fire/fire_department.php



We're Hiring!
Paid-On-Call Firefighters

LAKE ELMO FIRE DEPARTMENT

- Paid training (no experience needed to apply).
- Hourly rate with promotion opportunities.
 - Competitive retirement package.
- Weekly department training events and activities.
 - Duty Crew (at Station) staffing availability.
 - Exceptional apparatus and equipment.
- New fire station / City Center opening in 2023!

Station 1: 3510 Laverne Ave N / Station 2: 4259 Jamaca Ave N
Contact for Application Material: 651-770-5006 or www.lakeelmo.org

Police- Community Interaction Poll

We're using Polco to conduct community satisfaction surveys to see how well we're meeting your



expectations. Please take a few minutes to complete a short survey so we can gauge how you feel about police-community interaction in Lake Elmo.

Take the survey here

Street and Utility Project Updates

Updates on current city street and utility projects are available on the City's website: [Projects](#)



LAKE ELMO FARMER'S MARKET

A 501/C/3 NON-PROFIT



Market runs 9am to 1 pm on Saturdays

- Market will be open rain or shine unless inclement weather of high winds or lighting.
- Staff will be present on all Market days. Any concerns or questions please seek staff out.

- ***We are seeking a bread vendor and cheese vendor, if interested please contact Jill at 651-261-4493.***
- There are still spots open for Youth Vendors!
- We will have our fresh local corn! First picking!!
- Once the Market has started, applications are only given out at Market.

*Last year we had over 5600 visitors and customers at the Market!
for more information call Jill Lundgren at 651-261-4493*

Like us on Facebook "Lake Elmo Farmers Market" and watch for updates!

Business and Community Working Together/ Lake Elmo Farmer's Market is a 501c3

The City of Lake Elmo has begun participation in the State of Minnesota's Performance Measurement Program. This program began in 2010 for cities and counties to report on at least 10 performance measures annually as a way to aid residents, taxpayers, and state and local elected officials in determining the efficacy of counties and cities in providing services and measure residents' opinions of those services.

Click
here to
access
reporting
results



How will Lake Elmo change in 50 years?

Part of the construction of the Lake Elmo City Center is a time capsule project. We're inviting residents to share their predictions for Lake Elmo in the next 50 years. Submission slips are available at City Hall and City events for you to tell us how you think we'll change between now and 2073, so you tell us:

- How many people will live in Lake Elmo in 2073?
- What will downtown look like?
- How are City services delivered?
- What else does the future hold?

Fill out a slip and we will put them into a time capsule in the City Center, and come back in 2073 to see how your predictions turn out!

The City of Lake Elmo is accepting artifacts from Lake Elmo History like these cool mugs staff found at a local thrift store to display in the new City Center. If you have something you'd like displayed, contact Kristina Handt,

City Administrator at 651-747-3905

khandt@lakeelmo.org



The City of Lake Elmo is on Nextdoor!

In an effort to reach as much of the community as possible we've joined Nextdoor. We will use our public agency page to post news and important updates for residents.

[Find us here!](#)



Wondering how your business stacks up to others? Need data on customers, suppliers and other demographic information? Want to know how to maximize your advertising dollars? Washington County CDA has a new tool to help small businesses. Check it out today: [Sizeup Small Business](#)



Good news at Lake Elmo Library: the Book Club is back! The Lake Elmo Library Book Club will meet on June 2 at 6:30 p.m. to discuss our first selection, "Bel Canto" by Ann Patchett. Copies of this title are ready for checkout at the library. Meetings will be held at the same time, 6:30 p.m., on the first Thursday of each month. The Lake Elmo Book Club will be reading titles within the genres: classics, literary fiction, local interest, and award winners (with some exceptions as voted on by The Club). Book selections will be available one month prior to the meetings. We look forward to seeing you!

Join Lake Elmo Library for special storytimes at the Sally Manzara Interpretive Nature Center at Sunfish Lake Park. These events will be at 10:30 a.m. on the third Tuesdays of the month from May to September. Please bring your own chairs or blankets for the outdoor patio venue!
Join us, too, at the Lake Elmo Library for our Family Storytimes, Fridays at 10:30 a.m. For exact dates and times, please visit washcolib.org/storytime.

Hold on to your beach hat! Lake Elmo Library is getting ready for our Summer Reading program starting June 2. Check out the Library's website, washcolib.org, for information on Summer Reading 2022 programs and events for children, teens, and adults. Summer is always fun at the Library!

Lake Elmo Library

3537 Lake Elmo Avenue N
Lake Elmo MN 55042
651-275-8515
WashCoLib.org

Hours:

Monday: 10 a.m. - 4 p.m.
Tues., Wed., Thurs.: 12-8 p.m.
Friday: 10 a.m. - 4 p.m.
Saturday: 10 a.m. - 2 p.m.



Business Retention and Expansion Program

The Lake Elmo Economic Development Authority (LEEDA) will be kicking off a Business Retention and Expansion Program in March. LEEDA members will be reaching out to schedule visits with members of our business community to learn more about their business, what's going well, what could be done differently and how LEEDA can help them continue to grow and prosper in Lake Elmo.

With around 300 businesses in Lake Elmo and only 6 LEEDA commissioners, this campaign will take many months and likely continue into 2023. Commissioners will be focusing on businesses in the Old Village area first and then moving towards the I-94 corridor later this year. If you have any questions or would like to schedule a visit contact Kristina Handt at 651.747.3905 or khandt@lakeelmo.org



Need a Trusted **Business Advisor?**

This program provides free and confidential one-on-one assistance from MCCD's experienced staff, customized to meet the specific needs of each entrepreneur in the creation, growth, and success of their business.

Technical Assistance & Lending

- Business & strategic planning
- Marketing & communications planning
- Regulatory, tax, licensing, & accounting training
- Financial assessment
- Referrals to critical professional services
- Access to capital



We want to help you succeed!

To learn more about a free personalized plan for your business contact:



info@mccdmn.org
(612) 789-7337

www.mccdmn.org/open-to-business



The Sally Manzara Interpretive Nature Center is open every day
Visit <https://sminc-lake-elmo.org/> for details.



The Sally Manzara Interpretive Nature Center in Lake Elmo's Sunfish Lake Park is operated by a non-profit organization for the benefit of the entire community. We offer programs and events for people of all ages, and have "adopted" the Park in the City's program. This work is all funded by donations. Thank you for your support!

Are you looking for ways to help at the Sally Manzara Interpretive Nature Center?

- We are looking for weekday and weekend volunteer reception help. If you have an open morning or afternoon (even if it is only once a month) and you enjoy talking with friendly people and offering them a cup of coffee, you could be a receptionist volunteer. Training and volunteer background checks are provided.

Are you looking for something to do this coming week? Come check us out.

- **Wednesday 7/27** from 9:30 AM to 10:15 AM – Live Raptor Presentation – The University of Minnesota Raptor Center will be discussing raptors and they will have live raptors to view up close. Suggested donation of \$5 per family. We will meet outside on the patio and will move inside in case of rain.
- **Weekly on Wednesday** from 10:00 AM to 11:00 AM – Tai Chi – We are hosting a free Tai Chi class every Wednesdays. For details contact Paul Ryberg at pryberg@gmail.com. We'll meet outside if the weather is nice or inside if it isn't.

In addition to our weekly activities, we have several upcoming opportunities to highlight.

- **Tuesday 8/2** from 6:00 PM to 8:00 PM – Visit our New Naturemobile at the City of Lake Elmo Night Out. The celebration will be held at Lions Park. The current theme of our Naturemobile is birds. Join us and learn all about our feathered friends.
- **Saturday 8/6** from 10:00 AM to Noon – Mural Unveiling Celebration & Ice Cream Social. Please join us on Saturday August 6th as we celebrate the mural unveiling in the nature center! The murals were painted by campers during our summer mural art camp.
- **Saturday 8/13** Honey Extraction Demonstration – Please join us on Saturday August 13th to see honey being removed from a honey bee hive and taste fresh honey. More information to follow. Time TBD.

Visit us and check out our updated displays. This week we are featuring Birds common to Sunfish Lake Park and Forest Ecosystems.





The City of Lake Elmo is Seeking Applicants for Multiple Committees

The City of Lake Elmo is seeking interested residents to serve on two committees:

- EDA
- Planning Commission
- Parks Commission

[More Information Available Here](#)

Public Facilities Project Update

- At the November 3 City Council Meeting the City Council awarded bids for the new City Center and Public Works Addition.
- At the January 4, 2022 City Council Meeting the City Council awarded bids for painting at the new City Center
- The Lake Elmo City Council and Staff held a Groundbreaking Ceremony on April 30, 2022

Regular updates and documents are available [here](#).



- 1 New City Hall Entrance
- 2 New Fire Station Expansion
- 3 Council Chambers/Community room addition
- 4 Parking
- 5 Fire Department Parking
- 6 City Hall/Sheriff
- 7 Laverne Avenue

LEO A DALY

CITY OF LAKE ELMO COMBINED CITY HALL & PUBLIC SAFETY FACILITY

The new Lake Elmo City Hall / Public Safety Facility combines City Hall staff and functions, the entire Fire Department, and a satellite office for the Washington County Sheriff's department. This co-location involves renovating and expanding the City-owned Brookfield Office building to concentrate civic resources into a single structure at the historic core of the city. In addition, the Public Works facility will also be expanded to accommodate City growth and expanded service needs.



TOTAL ANTICIPATED PROJECT COST: \$14,600,000
DESIGN COMPLETION: Late summer 2021
CONSTRUCTION COMPLETION: Fall of 2022





MEETING THE DEMANDS OF AN EVOLVING FIRE SERVICE

Lake Elmo currently has two fire stations, Fire Station #1 at 3510 Laverne Ave. N. and Fire Station #2 at 4259 Jamaica Ave. N. This project will consolidate these two stations into a single, state of the art station that will meet the needs of our community and firefighters today and into the future. The building is designed to accommodate increasing call volumes, meet the demands for training and to support our evolving role as all hazard responders.

Due to the changing environment of fire department staffing needs and the impacts of that in relation to incident response times and budget responsibility, the fire department is consolidating to a single station which will allow the department the ability to transition to a staffing model that provides 24/7 coverage from the single station. This change requires the updated facilities like staff dorm rooms, day room and kitchen area, fitness room, staff workspaces and offices.

Educational materials provided by the City of Lake Elmo

For more information, visit our website: www.lakeelmo.org or contact Kristina Handt, Administrator at KHandt@lakeelmo.org



The current fire stations are too small to accommodate modern apparatus and equipment and cannot provide adequate health protections for our firefighters.

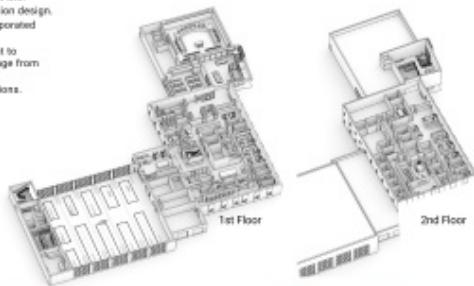
A FUNCTIONAL FIRE STATION

A new, single, state-of-the-art station will meet the needs of our community and firefighters today and into the future. Designed to accommodate our evolving role as all-hazard responders it will:

- Modernize our facilities following best practices in station design.
- Enhance firefighter training with training features incorporated into the building.
- The addition of living quarters will allow the department to transition to a staffing model that provides 24/7 coverage from the single station.
- Improve response times and overall department operations.

DESIGNED FOR FIREFIGHTER HEALTH AND SAFETY

- Distinct spaces to properly decontaminate gear and equipment. Focus to reduce staff exposure to firefighting carcinogens and other toxic materials.
- Properly ventilate the apparatus bay to reduce staff exposure to diesel exhaust and other harmful fumes.
- Space that supports the physical and mental health of staff.
- Clear separation between public and private spaces.



Lake Elmo City Hall, built in 1986, is a very small 2,806 SF. There are insufficient offices for all staff members and the restrooms are not accessible. The council chambers are small, do not provide sufficient space for department heads or members of the public, and lack modern technological updates. City staff have long outgrown this building and have since moved into the Brookfield Building located across the parking lot.

The Brookfield Building was purchased by the City in 2018 as a method of maintaining city functions next to the outgrown City Hall at a lower cost alternative to new construction. It was constructed in 1980 and will require a major overhaul to increase its useful life.

AN EXPANDED AND IMPROVED CITY HALL

- Improved service accessibility
- Community room available for public use
- New council chambers with updated technology
- Additional conference rooms
- Co-locate Washington County Sheriff staff
- Office space for growth of city staff
- Accessible restrooms.

