



fresh

Your Weekly Source for City News and Information

Public Meetings Next Week

- City Council Tuesday, November 1st, 7:00 p.m.

[City Agendas and Minutes](#)



General Election Tuesday, November 8th
Scroll Down for Absentee & Early Voting Info

Visit our website



Join us on Nextdoor

NOTICE OF MEETING

City Council Meeting

Tuesday, November 1, 2022 7:00 P.M.

City of Lake Elmo | 3800 Laverne Avenue North

AGENDA

- A. Call to Order/Pledge of Allegiance
- B. Approval of Agenda
- C. Approval of Minutes
 - 1. October 11, 2022 & October 18, 2022
- D. Public Comments/Inquiries
- E. Presentations
 - Lake Elmo Firefighter Retirement-Chris Supan
- F. Consent Agenda
 - 2. Approve Payment of Disbursements and Payroll
 - 3. Approve WAC Prepayment Agreement
 - 4. Approve Updated Job Description and Authorize Advertising for Utility Billing Clerk
 - 5. Approve Updated Job Description and Authorize Advertising for Building Inspector
 - 6. Approve Hiring of Paid on Call Firefighter
 - 7. Approve Promotion of Paid on Call Firefighter
 - 8. Accept Donation to the Fire Department from Arbor Glen – *Resolution 2022-099*
 - 9. Approve Lake Jane AIS Grant
 - 10. Accept Improvements, Approve CCO No. #2, and Approve Pay Request No. 3 (FINAL) for Section 16 Sanitary Sewer Extension
 - 11. Accept Improvements and Approve Pay Request No. 1 (FINAL) for 2022 Striping Project
 - 12. Approve Payment No. 3 for CSAH-13 Phase 2 Improvements
 - 13. Approve City Comments on Washington County Draft 2023-2027 CIP
 - 14. Approve 2023 Medical Insurance Plans – *Resolution 2022-101*
 - 15. Approve New Liquor License for Lakewood Tavern
 - 16. Approve 2023 Liquor License Renewals
- G. Regular Agenda
 - 17. Accept Feasibility Report, Call for Hearing on Improvements, and Authorize Preparation of Plans and Specifications for the Old Village Phase 7 Street and Utility Improvements – *Resolution 2022-100*
 - 18. Preliminary Plat/PUD, Comprehensive Plan & Zoning Map Amendment – United Properties – Amira Lake Elmo – *Ordinance 2022-14; Resolution 2022-102*
 - 19. Final Plat & Final PUD – DPS Lake Elmo 3rd Addition - 9450 Hudson Boulevard – SRD 2.0 LLC – *Resolution 2022-103*
- H. Council Reports
- I. Staff Reports
- J. Closed Session
 - The City Council will hold a closed session pursuant to MN Stat. Section 13.05D, subdivision 3 (a) for the purposes of the City Administrator performance review.*
- K. Adjourn

Absentee and In Person Voting Available

Absentee and in person voting for the November 8, 2022 General Election will be available at **Washington County service centers** between September 23rd and November 7th.

In-person absentee and ballot drop off is available at the Vote Centers listed below on Monday through Friday from 8 a.m. to 4:30 p.m.

Vote Centers:

Washington County Government Center

Cottage Grove Service Center

Washington County Offices at Woodbury Central Park

Oakdale City Hall



Absentee Voting Reminders:

Voters are encouraged to submit absentee ballot applications early.

The earliest a ballot will be mailed to you is 46 days prior to Election Day for all elections except Township elections.

Allow enough time to complete the application, have your ballot mailed to you, vote your ballot, and return it to Washington County via mail so it is received by Election Day. You cannot drop off your voted ballot at your precinct on Election Day. To request a paper application be mailed to you, call Washington County Elections at 651-430-6790. [Washington County Elections](#)



I-94 Oakdale to St. Croix River

Current Lane Closures

Tue, Oct. 25 through Sat, Nov. 12; 5 a.m. to 3 p.m. daily Monday-Saturday

- EB I-94 is reduced to two lanes between Woodbury Dr. and the St. Croix River Bridge

•

Tue, Oct. 25 through Sat, Nov. 12; 9 a.m. to 7 p.m. daily Monday-Saturday

- WB I-94 is reduced to two lanes between the St. Croix River Bridge and Woodbury Dr.

The Brookfield building at 3880 Laverne Avenue is closed and under construction. All City Services are available at City Hall, 3800 Laverne Avenue

Please drive slowly and watch for construction activity

Recreational Fires

Increase your enjoyment of outdoor fires by knowing you're doing all you can to burn cleanly, safely, and responsibly for your family, neighbors and community.

Recreational fires are restricted by size and material. A recreational fire cannot exceed three feet in diameter nor shall it exceed three feet in height (height of material stacked to burn). Only clean, dry, wood can be burned. Wood means dry, clean fuels, twigs, branches, limbs, manufactured fireplace logs, charcoal, or cord wood. "Wood" does not include wood or wood based products that is green with leaves or needles, rotten, wet, oil soaked, treated or manufactured with paint, glue, preservatives or other chemicals. Burning of leaves, grass and other yard waste is not allowed.

Be A Good Neighbor

Be a good neighbor when burning and consider your neighbors, as well as wind direction. Often times this prevents unnecessary calls to the fire department regarding smoke.

Cleaner Alternatives

Learn about your options before burning wood in your backyard. Switching to natural gas or propane reduces harmful air pollutants. Kits that convert existing fire rings and pits to natural gas or propane burners are available from local retailers.

Brush Disposal

Burning is not intended for the purposes of clearing brush piles, disposing of green leaved branches from tree trimming, or burning of leaves. For more information regarding brush disposal, please visit: <https://www.co.washington.mn.us/628/Yard-Waste>



Don't Wait or Hesitate!

If your recreational fire gets out of control, don't wait or hesitate. Call 911 immediately.

Feel free to call Fire Station #1 – 651-770-5006 with any questions

Street and Utility Project Updates

Updates on current city street and utility projects are available on the City's website: [Projects](#)





How will Lake Elmo change in 50 years?

Part of the construction of the Lake Elmo City Center is a time capsule project. We're inviting residents to share their predictions for Lake Elmo in the next 50 years. Submission slips are available at City Hall and City events for you to tell us how you think we'll change between now and 2073, so you tell us:

- How many people will live in Lake Elmo in 2073?
- What will downtown look like?
- How are City services delivered?
- What else does the future hold?

Fill out a slip and we will put them into a time capsule in the City Center, and come back in 2073 to see how your predictions turn out!



The City of Lake Elmo is accepting artifacts from Lake Elmo History like these cool mugs staff found at a local thrift store to display in the new City Center. If you have something you'd like displayed, contact Kristina Handt, City Administrator at 651-747-3905
khandt@lakeelmo.org

The City of Lake Elmo is on Nextdoor!

In an effort to reach as much of the community as possible we've joined Nextdoor. We will use our public agency page to post news and important updates for residents.

[Find us here!](#)





Lake Elmo Library

3537 Lake Elmo Avenue N
Lake Elmo MN 55042
651-275-8515
WashCoLib.org

Hours:

Monday: 10 a.m. - 4 p.m.
Tues., Wed., Thurs.: 12-8 p.m.
Friday: 10 a.m. - 4 p.m.
Saturday: 10 a.m. - 2 p.m.



Business Retention and Expansion Program

The Lake Elmo Economic Development Authority (LEEDA) will be kicking off a Business Retention and Expansion Program in March. LEEDA members will be reaching out to schedule visits with members of our business community to learn more about their business, what's going well, what could be done differently and how LEEDA can help them continue to grow and prosper in Lake Elmo.

With around 300 businesses in Lake Elmo and only 6 LEEDA commissioners, this campaign will take many months and likely continue into 2023. Commissioners are now beginning to reach out to businesses south of 10th Street between Inwood Avenue and Keats Avenue. If you have any questions or would like to schedule a visit contact Kristina Handt at 651.747.3905 or khandt@lakeelmo.org

**B
R
E**

Business Retention and Expansion

Need a Trusted **Business Advisor?**

This program provides free and confidential one-on-one assistance from MCCD's experienced staff, customized to meet the specific needs of each entrepreneur in the creation, growth, and success of their business.

Technical Assistance & Lending

- Business & strategic planning
- Marketing & communications planning
- Regulatory, tax, licensing, & accounting training
- Financial assessment
- Referrals to critical professional services
- Access to capital



We want to help you succeed!

To learn more about a free personalized plan for your business contact:



info@mccdmn.org
(612) 789-7337

www.mccdmn.org/open-to-business



The Sally Manzara Interpretive Nature Center is open every day
Visit <https://sminc-lake-elmo.org/> for details.



The Sally Manzara Interpretive Nature Center in Lake Elmo's Sunfish Lake Park is operated by a non-profit organization for the benefit of the entire community. We offer programs and events for people of all ages, and have "adopted" the Park in the City's program. This work is all funded by donations. Thank you for your support!

We have started our fall series of educational programs and events. On the first and third Saturdays of the month, we have Family Nature Exploration Events. On the second and fourth Saturdays of the month, we have free drop-in education activities in our building for all ages. We also have monthly adult education presentations.

Registration for Family Nature Explorations Events at:
<https://sminc-lake-elmo.org/event-descriptions/>

Are you looking for something to do this coming week? Come check us out.

- **Tai Chi - Weekly on Wednesday** from 10:00 AM to 11:00 AM – We are hosting a free Tai Chi class every Wednesday. For details contact Paul Ryberg at pryberg@gmail.com. The class will meet in the upstairs mezzanine level.
- **Saturday 10/29 - Interpretive Drop-In Event on Prairies** from 10 AM to Noon. What is a prairie? What animals live in a prairie? Are there prairies in Minnesota? Are grazing and fires good for some prairies? Find the answers to these questions and many others this Saturday. Drop in and learn more facts about prairies. This is a free family event for all ages.



In addition to our weekly activities, we have the following upcoming opportunity to highlight.

- **Saturday 11/5 - Family Nature Exploration Event - Cryogenics** from 10:00 AM to Noon. Join 3M Wizard, Jeff Payne, to explore the world of the ultra-cold. We will use extremely low temperatures to explore the behavior of solids, liquids, and gasses. We will also observe the unusual behavior of common materials and objects when exposed to a very cold environment. \$5/family, register online or drop-in.



SALLY MANZARA INTERPRETIVE NATURE CENTER FALL PROGRAMS

ANNUAL BUCKTHORN FESTIVAL

Saturday, October 22, 9:30 a.m. - 12:00 p.m.

Bring your work gloves and trimmers and help us with our continued effort to remove buckthorn and other invasive species in Sunfish Lake Park. Afterwards, we will provide a lunch of hot dogs, music and other fun activities. This is a family friendly event for all ages.



FAMILY NATURE EXPLORATION

1st & 3rd Saturdays, 10:00 a.m.

\$5/family, register online or drop in

October 1 - Bird Migration
with Ecologist Mary Frick

October 15 - Fall Photography Hike
with Master Naturalist Christa Rittberg

November 5 - Cryogenics
with 3M Wizard Jeff Payne

November 19 - Getting Ready for Winter
with Ecologist Mary Frick

December 3 - Air & Vacuum
with 3M Wizard Jeff Payne

December 17 - Winter Scavenger Hunt
Check in for supplies, self-guided



ADULT EDUCATION SERIES

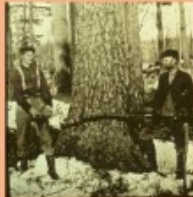
\$10/person, register online or drop in if not filled

Monthly presentations and workshops offered on topics related to nature, research, and science. Reserve a spot by registering online or drop ins available if our website shows there are still openings.

October 20, 7:00 p.m.
Nature Photography
with former journalist Sue Steinwall



November TBD
Loggers' Tales
with retired Minnesota State Park Naturalist Dave Crawford



December 8, 7:00 p.m.
Preserving Ice in the Environment
with retired 3M Chemist Tony Manzara

INTERPRETIVE DROP-IN EVENTS

2nd & 4th Saturdays, 10:00 a.m. - 12:00 p.m.

FREE, drop-in education activities in the building, for all ages

- October 8 - Monarch Migration
- October 22 - Buckthorn Festival
- October 29 - Prairie
- November 12 - Agates
- November 26 - Turkeys
- December 10 - Bees



CHECK OUR PROGRAM SCHEDULE & REGISTER FOR FEE BASED EVENTS AT:
SMINC-LAKE-ELMO.ORG/EVENT-DESCRIPTIONS/

Located at Sunfish Lake Park. Sunfish Lake Park is open from sunrise to sunset.



The City of Lake Elmo is Seeking Applicants for Multiple Committees

The City of Lake Elmo is seeking interested residents to serve on two committees:

- EDA
- Planning Commission
- Parks Commission

[More Information Available Here](#)





There was a lot of activity this week at the City Center construction site as crews worked to get the buildings enclosed before winter. Concrete bases for the exterior light posts were poured

The addition to the Public Works building is also underway with completion of the foundation and some of the concrete block wall.

Additional information is available on the City's [City Center](#)



- 1 New City Hall Entrance
- 2 New Fire Station Expansion
- 3 Council Chambers/Community room addition
- 4 Parking
- 5 Fire Department Parking
- 6 City Hall/Sheriff
- 7 Laverne Avenue

LEO A DALY

CITY OF LAKE ELMO COMBINED CITY HALL & PUBLIC SAFETY FACILITY

The new Lake Elmo City Hall / Public Safety Facility combines City Hall staff and functions, the entire Fire Department, and a satellite office for the Washington County Sheriff's department. This co-location involves renovating and expanding the City-owned Brookfield Office building to concentrate civic resources into a single structure at the historic core of the city. In addition, the Public Works facility will also be expanded to accommodate City growth and expanded service needs.



TOTAL ANTICIPATED PROJECT COST: \$14,600,000
DESIGN COMPLETION: Late summer 2021
CONSTRUCTION COMPLETION: Fall of 2022



City of Lake Elmo | 3800 Laverne Avenue North, Lake Elmo, MN 55042

[Unsubscribe](mailto:unsubscribe@lakeelmo.org) jjohnson@lakeelmo.org

[Update Profile](#) | [Constant Contact Data Notice](#)

Sent by jjohnson@lakeelmo.org powered by



Try email marketing for free today!