



fresh

Your Weekly Source for City News and Information

Public Meetings Next Week

- City Council Meeting Tuesday, September 6th, 7:00 p.m.

[City Agendas and Minutes](#)



[Visit our website](#)





NOTICE OF MEETING

City Council Meeting

Tuesday, September 6, 2022 7:00 P.M.

City of Lake Elmo | 3800 Laverne Avenue North

AGENDA

- A. Call to Order/Pledge of Allegiance**
- B. Approval of Agenda**
- C. Approval of Minutes**
 - 1. August 16, 2022 & August 23, 2022
- D. Public Comments/Inquiries**
- E. Presentations**
- F. Consent Agenda**
 - 2. Approve Payment of Disbursements and Payroll
 - 3. Authorize Advertising for Full Time Firefighter
 - 4. Authorize Issuance of Request for Proposals for Landscape Architect Services
 - 5. Approve First Amendment to Professional Services Agreement with Focus Engineering Inc.
 - 6. Approve Zoning Text Amendment Requiring a 40-Foot Residential Setback from a Public Street -
Ordinance 2022-08, Resolution 2022-065
 - 7. Approve Pay Request #2 for the CSAH13 Phase 2 Improvements
- G. Regular Agenda**
 - 8. Authorize Preparation of Feasibility Report for the 2023 Street and Utility Improvements
 - 9. Authorize Preparation of Feasibility Report for the Old Village Phase 7 Street and Utility Improvements
 - 10. Ivywood Circle No Parking Sign Request – *Resolution 2022-079*
- H. Council Reports**
- I. Staff Reports**
- J. Adjourn**

The Brookfield building at 3880 Laverne Avenue
is closed and under construction. All City
Services are available at City Hall, 3800 Laverne
Avenue

Please drive slowly and watch for construction
activity

The City of Lake Elmo is looking for your input at its SEPTEMBER 19th, 2022 Parks Commission meeting!

We want to know what residents would like to see as future improvements at Kleis Park and Pebble Park. Your input is valuable to us in providing the best park experience for the community of Lake Elmo! The meeting information is below. If you are unable to attend the meeting, please submit written or electronic comments no later than 5:00 pm the day of the meeting to Ben Hetzel, Lake Elmo City Planner at bhetzel@lakeelmo.org or 651-747-3911. We look forward to hearing from you!

Meeting Time: 6:30 PM

Location: Lake Elmo City Hall, 3800 Laverne Avenue N, Lake Elmo, MN



Pebble Park



Kleis Park

Manning Ave./30th St. Project Detour



The County Highway 15 (Manning Avenue) and 30th St Intersection Improvements project in the City of Lake Elmo will begin Tuesday, September 6th. 30th St will be closed west of County Highway 15 (Manning Avenue) starting Tuesday, September 6th and the closure is expected to run through October. Please follow the posted detour route. Project updates will be available on the Washington County project page: [Manning Ave/30th St.](#)



Current

Lane closures

Thu, Aug. 18 through September

- Off-peak periodic lane closures on Hwy 36 between Hilton Trail and Greeley St.



Upcoming

Information about upcoming traffic impacts will be provided as details become available. Motorists can expect off-peak, night time single lane closures from I-35E to Greeley St. Motorists can also expect flagging under traffic on the frontage road from I-694 to Manning Ave.

Lane closures

Mon, Aug. 29 through September

- 60th St. is reduced to one lane between Hilton Trail and Manning Ave. A flagger will be present to direct traffic.

MnDOT urges motorists to always be attentive, drive with caution, slow down in work zones where workers are present. Please follow the posted detour route and avoid traveling through residential neighborhoods for the safety of those that live in the area.

All construction activities and traffic impacts are weather dependent and subject to change.

For more information on the Highway 36 Project click here: [MNDOT](#)



Watering Restrictions

Reminder: City ordinance allows for outdoor watering between the hours of **6PM and 5AM** and follows an **odd/even schedule**. Properties with even-numbered postal addresses may water, sprinkle, or irrigate their lawns only on even-numbered days. Properties with odd-numbers postal addresses may water only on odd-numbered days.

To help reduce water usage, and your water bill, the City of Lake Elmo is contributing up to \$200 of the cost of smart irrigation controller devices. These smart controller devices can help save a household as much as 10,000 gallons of water per year!

FREE small business webinar coming up!



SizeUp is a free resource available through the Washington County Community Development Agency to assist small business owners with data and demographic information that can help grow small businesses. More information on this program and registration for the webinar may be found here: [SizeUp](#)



Take the survey here

Community Equity and Inclusion survey

We're using Polco to conduct community satisfaction surveys to see how well we're meeting your expectations. Please take a few minutes to complete a short survey so we can gauge how you feel about information provided to the public.

Street and Utility Project Updates

Updates on current city street and utility projects are available on the City's website: [Projects](#)



LAKE ELMO

FARMER'S MARKET

A 501/C/3 NON-PROFIT



Market runs 9am to 1 pm on Saturdays

- Market will be open rain or shine unless inclement weather of high winds or lighting.
- Staff will be present on all Market days. Any concerns or questions please seek staff out.
- There are still spots open for Youth Vendors!
- Once the Market has started ---- applications are only given out at Market.
- ***Applications for next year will be handed out this Saturday (our last Market day) If you would like to be a vendor for next year please come to the information booth.***

Last year we had over 5600 visitors and customers at the Market!

for more information call Jill Lundgren at 651-261-4493

Like us on Facebook "Lake Elmo Farmers Market" and watch for updates!

Business and Community Working Together/ Lake Elmo Farmer's Market is a 501c3

The City of Lake Elmo has begun participation in the State of Minnesota's Performance Measurement Program. This program began in 2010 for cities and counties to report on at least 10 performance measures annually as a way to aid residents, taxpayers, and state and local elected officials in determining the efficacy of counties and cities in providing services and measure residents' opinions of those services.

Click
here to
access
reporting
results



How will Lake Elmo change in 50 years?

Part of the construction of the Lake Elmo City Center is a time capsule project. We're inviting residents to share their predictions for Lake Elmo in the next 50 years. Submission slips are available at City Hall and City events for you to tell us how you think we'll change between now and 2073, so you tell us:

- How many people will live in Lake Elmo in 2073?
- What will downtown look like?
- How are City services delivered?
- What else does the future hold?

Fill out a slip and we will put them into a time capsule in the City Center, and come back in 2073 to see how your predictions turn out!



The City of Lake Elmo is accepting artifacts from Lake Elmo History like these cool mugs staff found at a local thrift store to display in the new City Center. If you have something you'd like displayed, contact Kristina Handt, City Administrator at 651-747-3905
khandt@lakeelmo.org

The City of Lake Elmo is on Nextdoor!

In an effort to reach as much of the community as possible we've joined Nextdoor. We will use our public agency page to post news and important updates for residents.

[Find us here!](#)





Lake Elmo Library

3537 Lake Elmo Avenue N
Lake Elmo MN 55042
651-275-8515
WashCoLib.org

Hours:

Monday: 10 a.m. - 4 p.m.
Tues., Wed., Thurs.: 12-8 p.m.
Friday: 10 a.m. - 4 p.m.
Saturday: 10 a.m. - 2 p.m.



Business Retention and Expansion Program

The Lake Elmo Economic Development Authority (LEEDA) will be kicking off a Business Retention and Expansion Program in March. LEEDA members will be reaching out to schedule visits with members of our business community to learn more about their business, what's going well, what could be done differently and how LEEDA can help them continue to grow and prosper in Lake Elmo.

With around 300 businesses in Lake Elmo and only 6 LEEDA commissioners, this campaign will take many months and likely continue into 2023. Commissioners are now beginning to reach out to businesses south of 10th Street between Inwood Avenue and Keats Avenue. If you have any questions or would like to schedule a visit contact Kristina Handt at 651.747.3905 or khandt@lakeelmo.org

B R E

Business Retention and Expansion

Need a Trusted Business Advisor?

This program provides free and confidential one-on-one assistance from MCCD's experienced staff, customized to meet the specific needs of each entrepreneur in the creation, growth, and success of their business.

Technical Assistance & Lending

- Business & strategic planning
- Marketing & communications planning
- Regulatory, tax, licensing, & accounting training
- Financial assessment
- Referrals to critical professional services
- Access to capital



We want to help you succeed!

To learn more about a free personalized plan for your business contact:



info@mccdmn.org
(612) 789-7337

www.mccdmn.org/open-to-business



The Sally Manzara Interpretive Nature Center is open every day
Visit <https://sminc-lake-elmo.org/> for details.



The Sally Manzara Interpretive Nature Center in Lake Elmo's Sunfish Lake Park is operated by a non-profit organization for the benefit of the entire community. We offer programs and events for people of all ages, and have "adopted" the Park in the City's program. This work is all funded by donations. Thank you for your support!

Are you looking for ways to help at the Sally Manzara Interpretive Nature Center?

- We are looking for volunteer reception help. If you have an open morning or afternoon (even if it is only once a month) and you enjoy talking with friendly people and offering them a cup of coffee, you could be a receptionist volunteer. Training and volunteer background checks are provided.

Are you looking for something to do this coming week? Come check us out.

- **Weekly on Wednesday** from 10:00 AM to 11:00 AM – Tai Chi – We are hosting a free Tai Chi class every Wednesdays. For details contact Paul Ryberg at pryberg@gmail.com. We'll meet outside if the weather is nice or inside if it isn't.

If you missed our honey extraction event last week, don't worry. We have one pound jars of fresh honey available for a donation and our indoor bee hive exhibit is still up and running. Stop in for some honey and watch our new queen bee at work.

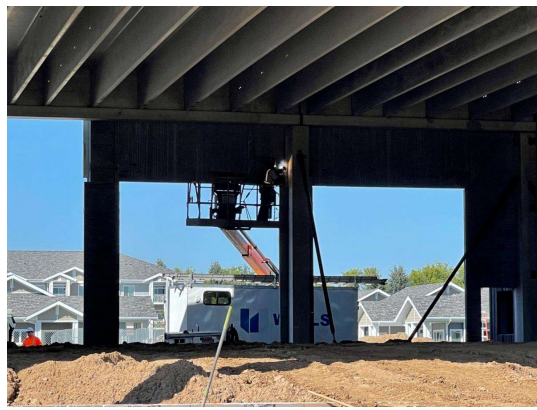
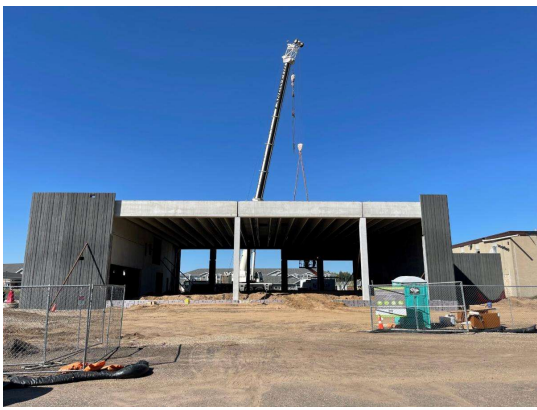


The City of Lake Elmo is Seeking Applicants for Multiple Committees

The City of Lake Elmo is seeking interested residents to serve on two committees:

- EDA
- Planning Commission

[More Information Available Here](#)



This week additional progress was made on the Fire Department apparatus bays. Crews installed the remaining ceiling panels, additional wall panels, and work has begun to frame in the doors that will allow vehicles to pull through the building versus backing in.

Previous updates and documents are available [here](#).



- 1 New City Hall Entrance
- 2 New Fire Station Expansion
- 3 Council Chambers/Community room addition
- 4 Parking
- 5 Fire Department Parking
- 6 City Hall/Sheriff
- 7 Laverne Avenue

LEO A DALY

CITY OF LAKE ELMO COMBINED CITY HALL & PUBLIC SAFETY FACILITY

The new Lake Elmo City Hall / Public Safety Facility combines City Hall staff and functions, the entire Fire Department, and a satellite office for the Washington County Sheriff's department. This co-location involves renovating and expanding the City-owned Brookfield Office building to concentrate civic resources into a single structure at the historic core of the city. In addition, the Public Works facility will also be expanded to accommodate City growth and expanded service needs.



TOTAL ANTICIPATED PROJECT COST: \$14,600,000
DESIGN COMPLETION: Late summer 2021
CONSTRUCTION COMPLETION: Fall of 2022



City of Lake Elmo | 3800 Laverne Avenue North, Lake Elmo, MN 55042

[Unsubscribe](mailto:unsubscribe@lakeelmo.org) jjohnson@lakeelmo.org

[Update Profile](#) | [Constant Contact Data Notice](#)

Sent by jjohnson@lakeelmo.org powered by



Try email marketing for free today!