



# fresh

Your Weekly Source for City News and Information

## Public Meetings Next Week:

- Parks Commission Monday, December 18th, 6:30 p.m.



*City Offices will be closed Monday, December 25th and Tuesday, December 26th in observance of the Christmas holiday. We wish you all a very happy holiday season!*

Visit our website

Join us on Nextdoor



## NOTICE OF MEETING

**City of Lake Elmo Parks Commission**  
**3880 Laverne Avenue North**  
**December 18, 2023**  
**6:30 p.m.**

### AGENDA

1. Call to Order
2. Pledge of Allegiance
3. Approve Agenda
4. Approve Minutes
  - a) November 20<sup>th</sup>, 2023
5. Public Comment
6. 2024 Parks Work Plan
7. Playground Replacement
8. Communications
9. Adjourn

*\*\*\*Note: Every effort will be made to accommodate person or persons that need special considerations to attend this meeting due to a health condition or disability. Please contact the Lake Elmo City Clerk if you are in need of special accommodations.*

---

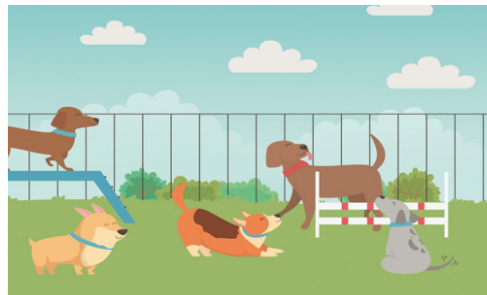
**Full meeting packets and meeting can be accessed here:**  
[Agendas and Minutes](#)

---

### **Help us name Lake Elmo's new Dog Park !**

The City of Lake Elmo is asking the community for help in naming the new Dog Park. The new 10 acre park located at [4059 Jamaca Ave](#) can also be accessed through Sunfish Lake Park, is expected to open in 2024. The dog park will feature walking paths, parking lot, a separate small dog area, animal water station and open greenspace.

Scan QR code to complete Survey



## Winter Parking

Please remember that the City of Lake Elmo has a winter parking ordinance that **prohibits parking on city streets from November 1st through March 31st between 2:00 a.m. and 7:00 a.m.** This gives crews a window of time for clearing streets curb to curb more efficiently. Thank you for your understanding and cooperation!



The City of Lake Elmo has been working with Washington County and their environmental specialist to incorporate recycling efforts in our downtown area and at the new City Center. A grant provided by Washington County offered the city an opportunity to place bins throughout downtown, Lions Park and VFW Field, and at City Hall. These bins will help promote recycling throughout the area and can help reduce waste up to 60% in common areas.

[Drop Box Available](#)

The new City Center building has a convenient drop box located on the front of the building.



Utility payments, permit applications and other documents may be dropped in the box during or after office hours.



## Parks Master Plan Survey

Lake Elmo Residents are invited to participate in a survey to help the City gather information for creation of a master parks plan. Please take a few minutes to share your feedback with us! The QR code to the left will take you directly to the survey, or you can also access the survey here: [Parks Master Plan Survey](#)



Want cleaner lakes  
and streams?

**ADOPT A  
DRAIN  
TODAY!**

[mn.adopt-a-drain.org](http://mn.adopt-a-drain.org)



*[Emerald Ash Borer](#)*

### **Washington County will remove ash trees from Lake Elmo Park Reserve**

Washington County is continuing ash tree removal within Lake Elmo Park Reserve in response to the emerald ash borer. Starting Nov. 15 through March 31, 2024, ash trees will be removed near trails and in natural areas of the park. These removals will help minimize risk to the public from falling trees and will also reduce fuel loads that can increase fire risk within the park.

To complete the work, a contractor will be using equipment to cut and haul the trees to staging areas, before chipping and removing debris from the site. Once work commences, ski trails on the south side of Lake Elmo and the snowmobile trail will be closed. Only ash trees will be removed, and new bareroot trees will be planted in suitable areas in the spring of 2024.

**See the county website at** [www.washingtoncountymn.gov](#) to view a map of ash trees. Green dots are trees to be removed, and purple dots are ash trees surveyed in summer of 2023. If time and weather conditions allow, staff will also remove dead or dying ash trees along the property boundaries.

The Minnesota Department of Agriculture website has more information about the emerald ash borer at [www.mda.state.mn.us/eab](http://www.mda.state.mn.us/eab)

The Sally Manzara Interpretive Nature Center is open every day  
Visit <https://sminc-lake-elmo.org/> for details.



The Sally Manzara Interpretive Nature Center in Lake Elmo's Sunfish Lake Park is operated by a non-profit organization for the benefit of the entire community. We offer programs and events for people of all ages and have "adopted" the Park in the City's program. This work is all funded by donations. Thank you for your support!

Here are some things happening at the SMINC:

- The nature center's new winter hours began December 1. Until spring we will be open Monday through Saturday from 9 a.m. to 3 p.m. and Sunday from 11 a.m. to 3 p.m. On Saturday, Dec 23rd we will be closing at noon, and we will be closed on Christmas Eve, Christmas day and New Years day.
- Artist Julie Schroeder be back with us in January with another painting workshop. This time, the focus will be on mixed media. Students will be encouraged to experiment with incorporating items like beads, lace, yarns, ribbons, paper, sand, feathers & glitter into their paintings. The workshop will be on Friday, January 26 from 10 a.m. to 3 p.m. The cost is \$75.00 which includes materials. You can sign up with Julie directly at: [brushcolour@yahoo.com](mailto:brushcolour@yahoo.com)
- Something new is happening! Several weeks ago, the Washington County Master Gardeners Tree Squad met at SMINC and presented a plan to create an educational "Tree Trek" in Sunfish Lake Park. Although we did not receive requested funding from a MN-DNR Re-Leaf grant application, with the permission of the City's Public Works Department head Marty Powers, we placed stakes near each of 39 trees of interest along a wheelchair-friendly route about 1000 ft long, and created a website page to provide access to the educational material. Each stake has a tree number and a QR code that links to our [Tree Trek website page](#), where there will be links to a separate page for each tree (only a few are active so far. Try the one for 11 - Bur Oak). A draft of the printable tri-fold brochure is also available via a link on the Tree Trek page.



Washington County is a registered



**NALOXONE  
ACCESS  
POINT**



**Free naloxone kits and fentanyl test strips may be found at the  
Public Health & Environment offices in:**

- Cottage Grove Service Center, 13000 Ravine Parkway, Cottage Grove.
- Forest Lake Service Center, 19955 Forest Road N., Forest Lake.
- Government Center, 14949 N. 62nd St., Stillwater.



Find more information on the program  
on the county's website at  
[www.co.washington.mn.us/NAP](http://www.co.washington.mn.us/NAP)



The City of Lake Elmo has begun participation in the State of Minnesota's Performance Measurement Program. This program began in 2010 for cities and counties to report on at least 10 performance measures annually as a way to aid residents, taxpayers, and state and local elected officials in determining the efficacy of counties and cities in providing services and measure residents' opinions of those services.

Click  
here to  
access  
reporting  
results

The Valley Branch Watershed District  
(VBWD) is a public organization tasked



with protecting and managing local water resources within an area spanning 14 cities and townships in Washington and Ramsey Counties. The VBWD is seeking input from you as it begins updating its Watershed Management Plan which will guide VBWD actions for the next 10 years. Please take a brief (5-10 minute) survey to help the VBWD better understand your concerns and priorities regarding our local water resources.

Link to survey: [Survey](#)

City of Lake Elmo | 3880 Laverne Avenue North, Lake Elmo, MN 55042

[Unsubscribe jjohnson@lakeelmo.org](#)

[Update Profile](#) | [Constant Contact Data Notice](#)

Sent byjjohnson@lakeelmo.orgpowered by



Try email marketing for free today!