

Winter 2017-18



www.lakeelmo.org

THE SOURCE

Your source for City news and information

2018 Budget Update

2018 Preliminary General Fund Budget

On September 19, 2017, the City Council adopted a 2018 Preliminary General Fund Budget of \$4,700,538, which is an increase of \$749,152 or approximately 18.96% compared the 2017 Adopted General Fund Budget of \$3,951,386.

2018 Preliminary Property Tax Levy

Also on September 19, the City Council approved the 2018 Preliminary Property Tax Levy of \$3,626,406, which is an increase of \$675,980, or approximately 22.91% when compared to the 2017 Final Property Tax Levy. This net increase is attributed to the General Fund proposed request of \$593,771, Debt Service increases of \$339,166 and a decrease in Library Levy of \$256,957, which will now be part of the Washington County system in 2018. The 2018 Preliminary Property Tax Levy adopted by the City Council, will be used by Washington County to calculate parcel specific notices mailed to taxpayers in mid-November. The 2018 Preliminary Property Tax Levy may not be increased, but could be decreased, as budget work continues before the December adoption.

2018 Preliminary City Property Tax Rate:

The City's 2018 Preliminary Property Tax Rate is approximately 22.60%, compared to 20.02% for the 2017 Final Property Tax Rate, which is an increase of approximately 12.91%. This lesser increase compared to the property levy is a result of increased tax capacity within the City spreading the property tax levy over a larger number of properties. From 2013 Final to 2018 Proposed, tax capacity has increased from approximately \$11.38 million to \$16.05 million or approximately 40.94%. During that same time, the tax rate has declined from 27.82% to the proposed rate of 22.60%, or a decrease of approximately 18.75%. The 2018 tax capacity and tax rate will experience minor fluctuations as Washington County refines its Pay 2018 taxing information throughout the year, and will not become final until early 2018 when the property tax



statements to go out.

2018 Property Tax Levy Impact on a Median Value Homesteaded Property - City Share of Taxes

For a median valued home of \$378,300 that experiences a change in valuation of approximately 1.19%, to \$382,800, based on information from Washington County, the estimated City share of property taxes for the Preliminary 2018 Property Tax Levy would be \$858.88 compared to \$750.88 for the 2017 Final Property Tax Levy. This is an increase of \$108.00, or approximately 14.4% for the estimated City share of property taxes. This information is contingent upon changes in overall valuation, tax capacity, and the City's 2018 Final Property Tax Levy.

Public Hearing on 2018 Budget and 2018 Final Tax Levy - Tuesday, December 5, 2017 at 7:00 p.m.

Scheduled to occur on December 5, 2017 at the Regular City Council meeting will be the Public Hearing on the 2018 Final Property Tax Levy and 2018 Budget. After the Public Hearing, the City Council will consider and adopt the 2018 Final Property Tax Levy, 2018 Budget, and 2018 – 2022 Capital Improvement Plan. If necessary, the City Council can hold open the Public Hearing for continuation at the December 19, 2017 Regular City Council meeting, and upon closure of Public Hearing will consider adoption of the aforementioned items.

WINTER PARKING ORDINANCE

During the October 3, 2017 meeting, the Lake Elmo City Council approved a new Winter Parking Ordinance. The new ordinance ushers in a needed procedure that has never been in place to regulate parking on city streets during the winter months.

With the new ordinance in place, parking is prohibited on all city streets from **November 1st through March 31st between the hours of 2am and 7am**. This gives snowplow operators the ability to safely plow streets that are free of cars when the need arises. Many other neighboring communities have similar ordinances that function well in terms of snow plowing, public safety and ease of enforcement.

Along with the Winter Parking Ordinance, the City Council adopted a Snowplowing and Ice Control Policy. A policy such as this outlines several topics that relate to snowplowing operations and questions that residents may have.

Each of these documents can be viewed on the city website at www.lakeelmo.org

Inwood Ave Water Tower

Construction of the new Inwood Ave Water Tower is in the final stages. The tower is expected to be online and operational Fall of 2017. Once complete, the 1 million gallon tower will provide water to the Interstate 94 corridor of the city.



Snow Plowing in Lake Elmo

Winter weather is never a popular subject, especially for plow operators who are trying to keep roads clear and safe for traffic. The following are a few tips and information that will hopefully make winter a little easier for everyone.

- Do not deposit or push snow across any street (MN State Statute 160.2715)
- Please keep garbage and recycling containers off the roadway.
- Make sure your mailbox is at its legal height and properly secured. The city will only replace mail boxes that are physically hit by city plows.
- Priority will be given to roads with higher amounts of traffic. Roads serving residential areas and cul-de-sacs will be plowed secondary.
- Depending on snowfall timing, crews will begin operations between 2am and 4am.
- Please leave plenty of room when following

plows. These units do frequent turning and backing. Remember, ***“If you cannot see their mirrors, they cannot see you.”***



Planning & Development Update

Comprehensive Plan 2040

The City is currently undergoing its 2040 Comprehensive Plan Update. The Metropolitan Land Planning Act requires all cities and counties in the Twin Cities Metropolitan Area (7-counties) to adopt a Comprehensive Plan (“Plan”), and to update and amend those plans on a decennial basis. The Plan is required to comply with the Metropolitan Council’s regional system plans that include transportation (highways and transit), wastewater services, airports, parks and open space. The Plan update must be submitted to the Metropolitan Council for review and approval, and the City must adopt it by the end of 2018.

What is a Comprehensive Plan?

A Comprehensive Plan establishes a community’s long-term vision, goals, strategies and policies for guiding future changes and investments. The Plan is intended to serve as a roadmap for the City for the next 20-year planning period. The Lake Elmo Plan Update will address future land uses, housing, economic development, transportation, parks, trails, open space, natural resources and city services/facilities.

What is the Process?

The process generally involves:

- Review of existing Comprehensive Plan to determine areas to be updated
- Background Report preparation, issue identification, visioning & goal setting
- Identification of specific issues/plan components that need updating
- Facilitation of Advisory Panel (working group), community review and input opportunities
- A comprehensive update of the plan
- Plan review and adoption by the City’s Planning Commission and City Council

City Staff and consulting firm, Swanson Haskamp Consulting, have held a number of meetings and attended a number of events to gain input on the Comprehensive Plan and are currently working on a draft to present at an open house in late fall. The Comprehensive Plan Advisory Panel, which is comprised of a group of representatives from City commissions and committees as well as citizen members, have held monthly meetings since May; two stakeholder meetings regarding land use in the Old Village and South of 10th Street were held over the summer; one open house focusing on rural areas, land use South of 10th Street and the Old Village was held in August; and many public engagement events including Arbor Day, Fourth of July Celebration, Farmers Market, Tri-Lakes Ski Show were attended. More information and an opportunity to fill out a survey can be found at lakeelmoplan2040.com or by stopping at City Hall. Fliers advertising the next open house will be sent out city-wide.

Development

There are currently 13 developments within the City that have received at least concept plan approval. Since the beginning of 2017, three of these developments have received final plat approval (Hidden Meadows with 26 units; and Southwind of Lake Elmo with 46 units; Royal Golf of Lake Elmo with 73 of 291 units; and Northport with 36 of 104 units). Gonyea West, with 279 proposed units, has received Concept Plan approval, and the City has received an application for a Concept Plan and Comprehensive Plan Amendment for a 300 unit multi-family development.

Planning Staff:

Emily Becker, Planning Director
ebecker@lakeelmo.org
651-747-3912

Ben Prchal, City Planner
bprchal@lakeelmo.org
651-747-3931

Washington County's Environmental Center

Washington County's Environmental Center provides residents with a free and convenient disposal of household hazardous waste, electronics and recyclables. Proof of residency, such as a driver's license, is required. The Environmental Center is located at 4039 Cottage Grove Drive in Woodbury.

Household Electronics accepted include cell phones, computers, monitors, DVD and VCR players, fax machines, TVs, printers, keyboards, mice, and computer speakers.

Household hazardous waste accepted include:

- Aerosol cleaners / degreasers / lubricants / starting fluid
- Antifreeze, brake fluid, power steering
- Used cooking oil, bug spray, mothballs, nail polish / remover
- Driveway sealer, concrete cleaner, wood preservatives
- Fire Extinguishers, fluorescent lights, household sharps (see website for details)
- Glue with solvents, roofing tar, kerosene
- Household cleaner, drain cleaner, oven cleaner, spot remover
- Insect / roach / ant killer / rodent bait

- Latex and oil-based paint, stain, varnish
- Polish with solvents, paint remover / stripper / thinner
- Pool chemicals, weed killer, fertilizer with weed killer
- Propane tanks, rechargeable batteries, mercury thermometers and thermostats
- Transmission oil, gasoline, used motor oil and filters

Washington County's Environmental Center is also hosting a Confidential Paper Shredding Collection on November 8, 2017 from 8 a.m. until 4:30 p.m.



Lake Elmo Library to Re-join Washington County Library January 1, 2018

After five years of being an independent city library, the Lake Elmo Library will become part of the Washington County Library system again at the beginning of the year. This change allows Lake Elmo residents to now access resources not only at other Washington County libraries but also those available in the seven county metro area through the Metropolitan Library Service Agency (MELSA).

Hours the library is open will also change at the start of the year. While the overall hours will be reduced from 48 to 40 hours per week, the library will still be open a variety of hours Monday through Saturday including day time, evening and weekend hours.

The large meeting room in the rear of the library will still be available for use by community groups provided their requested time does not overlap with library programming in the space. After hours reservations of the space will be available by contacting city hall.

Lake Elmo library cards will continue to be used until the end of December. After that patrons will be asked to obtain a Washington County library card. There's no need to wait until the beginning of the year, as Washington County library cards are available to all Lake Elmo residents now at no charge.



Are you thinking about starting your own business or are you currently operating a small business and interested in technical assistance? Washington County has partnered with Lake Elmo and The Metropolitan Consortium of Community Developers (MCCD) to offer the Open to Business program. This program provides free one-on-one assistance from MCCD's expert staff, customized to meet the specific needs of each entrepreneur.

Free Technical Assistance

Open to Business will provide prospective and existing entrepreneurs in Lake Elmo with free one-on-one counseling with a business advisor. The program provides assistance in the following areas:

- Business plan development
- Financial management
- Cashflow financial
- Bookkeeping set-up and training
- Loan packaging
- Commercial real estate analysis
- Marketing assistance
- Strategic planning
- Networking & professional referrals



Small Business Loan Program

Open to Business advisors can also assist entrepreneurs to identify borrowing needs and accessing financing options. Advisors work with clients to help them find the financing that best meets their own unique needs. MCCD also provides direct financing and loans in partnership with banks and nonprofit lenders. Funds can be used for inventory, working capital, asset and equipment purchases, real estate acquisition, and start-up costs.

How it Works

For more information on the services offered or to schedule an appointment, contact Tyler Hilsabeck at 612-789-8838 or thilsabeck@mccdmn.org

For general information, visit the Open to Business website at: www.opentobusinessmn.org

Lions Park Ballfield Improvements

Work is progressing on ballfield improvements at Lions Park. This past summer City Council approved plans to regrade the existing baseball field in a way that the first base line runs along the 45th Parellel. Other improvements include new field lighting, dugouts, irrigation and additional parking.

In addition to the ballfield improvements, a new parking lot is planned on the northern edge of the park accessible off 36th St. N. This parking lot will house the hockey rink during the winter months. The relocating of the hockey rink is being done to protect the turf and irrigation system that will be installed in the area the rink was previously housed.



Lake Elmo Lions donated \$20,000 towards improvements at Lions Park

Fire Department Update

First off, and probably most importantly, staffing the department is proving to be more and more difficult as it is with other paid-on-call/volunteer fire departments around the country. Thankfully, with the vision and direction of our City Council, your fire department has been able to hire much needed part-time fire fighters. This is going to be a work-in-progress as we acclimate to a different way of working and maximize the benefits of our new staffing dynamic. You will be seeing a lot more of your fire fighters around town as we increase our Fire Prevention/Fire Education activity and assist Lake Elmo Public Works with the maintenance of our fire hydrants.

We are also excited to be working on a project that has the potential to benefit every resident of Lake Elmo. This project, SAFE HAVEN, has been used with great success by neighboring fire departments. One mission that connects all fire departments is the desire to help and protect our communities, thus the willingness to not only share, but to assist in the development of our program by the North Saint Paul Fire Department. We are expecting to roll this program out before the end of the year.

SAFE HAVEN is a collaborative effort between law enforcement and fire departments to guide citizens through a simple self-assessment in their own homes. SAFE HAVEN also offers follow up options if requested in the form of basic smoke and carbon monoxide detector checks, battery replacements, and even the possibility of free detectors, batteries, or a basic inspection/walkthrough of your home, so we can give you basic ideas to help keep you and your family safe. Part of the program also includes the possibility of free Fire Stop stove top automatic fire extinguishers. As SAFE HAVEN is being finalized you will find a "Citizen Request Form" on the Fire Department's page on City's website under the Fire Department Related Information header at: <http://www.lakeelmo.org/public-safety/lake-elmo-fire-department> . Please feel free to complete it and send it in now if you think you could benefit from our help on a more immediate timeline.

In addition to the SAFE HAVEN project, Lake Elmo FD already offers many other services such as free basic First Aid classes, and a basic CPR instruction program where you can borrow a small kit that includes an inflatable mannequin and instruction video for self-teaching at home. The kits were provided by Lake Elmo Rotary.

While we may not want to think about it yet, winter is approaching. Here are some safety tips.

- Stay off the thin ice! MN DNR Ice Safety Tips can be found at: www.dnr.state.mn.us/safety/ice/index.html
- The State Fire Marshal website provides safety tips regarding Home Heating, Holiday Safety, Carbon Monoxide and other year around tips. Visit their site at: <https://dps.mn.gov/divisions/sfm/for-families/Pages/fire-facts-tips-what-you-need-to-know.aspx>
- Fire Hydrants - Help us help you by keeping fire hydrants clear of snow and other obstructions. If you are unable to clear the hydrant, please contact the Lake Elmo FD at 651-770-5006 or gmalquist@lakeelmo.org

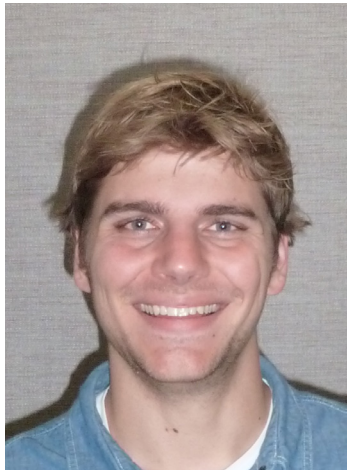
As always, remember that safety knows no season and we are here to answer any questions you may have. Contact us at 651-770-5006 or gmalquist@lakeelmo.org

New City Staff



Emily Becker, Planning Director

Emily Becker has been with the City of Lake Elmo in the Planning Department for a little over a year and half. She previously served as City Planner, and became Planning Director in August after the previous Planning Director moved out-of-state. Emily enjoys working with the City and appreciates how active Lake Elmo's residents are.



Ben Prchal, City Planner

Ben Prchal started in Lake Elmo as a City Planner in September. He graduated from the University of Wisconsin River Falls with a degree in Community Planning/Land use with a minor in GIS. While in college, he served on the Stillwater Township Planning Commission, and worked on a research grant for the Kinnickinnic River and Watershed. Ben worked for a small Engineering and Planning firm before coming to Lake Elmo. It has always been a goal of his to work for a local community, especially within Washington County, which he has called home for the past 16 years.

Jake Foster, Assistant City Administrator

Jake Foster started with Lake Elmo as the Assistant City Administrator in September. Prior to working at the City he was working at the City of Fridley as a Management Analyst. Jake will oversee the Human Resources and Communications functions while providing general administration support to the City Administrator.





3800 Laverne Ave. N.
Lake Elmo, MN 55042

PRSTD STD
US POSTAGE
PAID
PERMIT NO. 19
LAKE ELMO, MN

**POSTAL PATRON
LAKE ELMO MN 55042**

Public Works Contact Info:

Public Works: 651-747-3940

Emergency:

Monday – Friday: 8:00 a.m. – 4:30 p.m.

City Hall: 651-747-3900

All other hours and weekends,

Washington County Dispatch: 651-439-9381

Winter activities in Lake Elmo Parks

Are you looking for something to do outdoors this winter? Below are a few activities you can enjoy in Lake Elmo City Parks.

• **Ice Skating** – Lion’s Park has a Hockey and Pleasure Rink along with a Warming House. The rinks will open once the weather becomes cold enough to sustain hard ice. Warming House hours are 3-9 p.m. Monday-Friday and 12-9 p.m. Saturday-Sunday and days when school is out.

• **Cross Country Skiing/Hiking/Sledding** – Sunfish Lake Park has groomed trails for those that enjoy skiing, snow shoeing and hiking. You can also enjoy the park’s sledding hill.

• **Sledding** – Tablyn Park’s sledding hill is a popular spot for many to come and test their skills.



THE SOURCE

A publication of the City of Lake Elmo
3800 Laverne Ave. N., Lake Elmo MN 55042 • 651-747-3900

Mayor
Mike Pearson

Internet: www.lakeelmo.org
Email: comments@lakeelmo.org
POLICE-FIRE Emergency: 9-1-1
Non-emergency: (651) 439-9381

Council
Justin Bloyer
Julie Fliflet
Jill Lundgren
Christine Nelson

City Administrator
Kristina Handt



www.facebook.com/LakeElmoMN