



fresh

Your Weekly Source for City News and Information

Public Meetings Next Week:

- None

Visit our website

Join us on Nextdoor



Full meeting packets and meeting minutes can be accessed here:
[Agendas and Minutes](#)



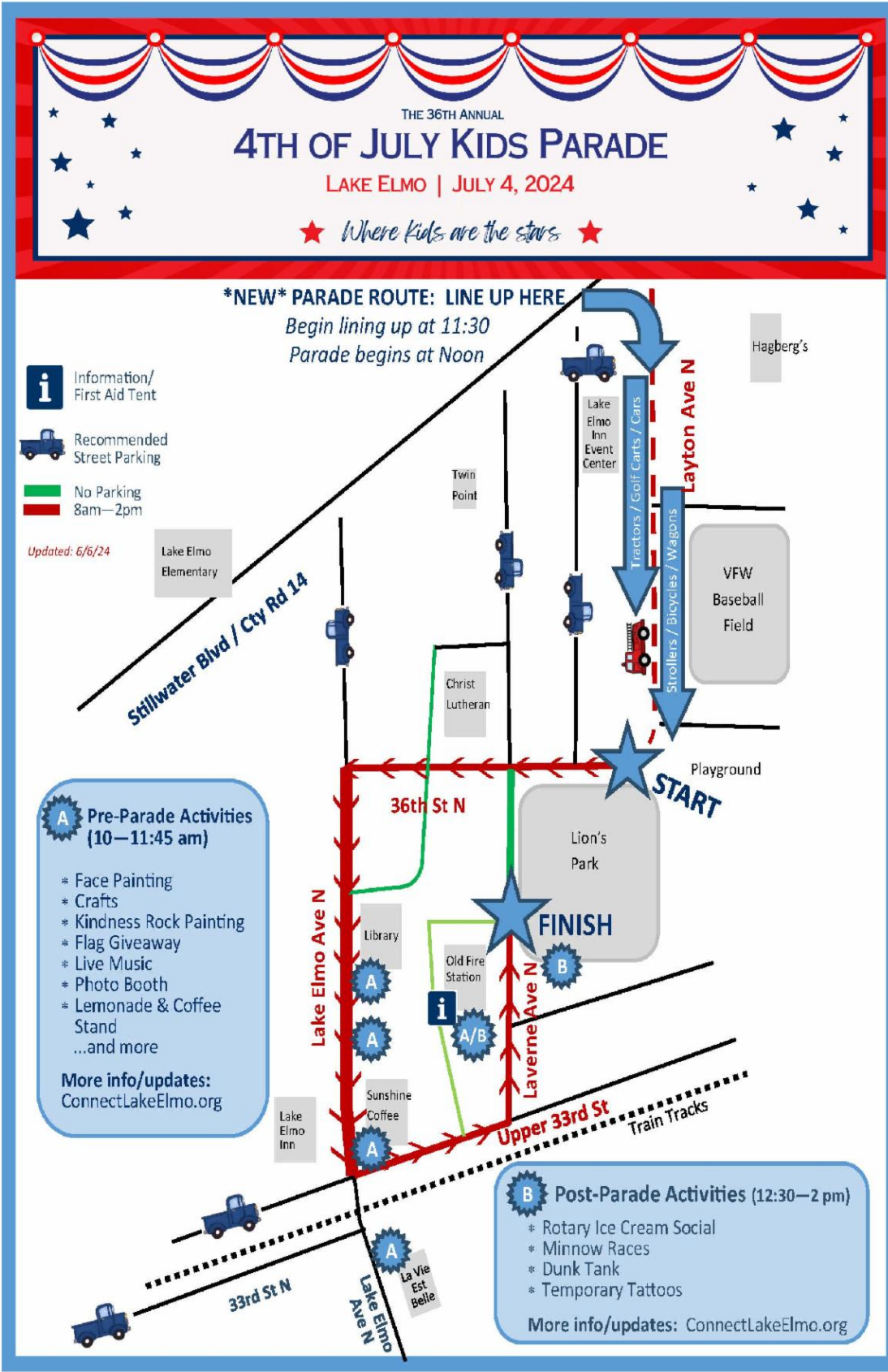
A Word from Mayor Cadenhead

Civic engagement is really important to me because it is the cornerstone of building community. I am so proud of the service organizations, projects, and community events that make Lake Elmo a great place to live. A few years ago, the Connect Lake Elmo organization formed to offer a centralized calendar of events in Lake Elmo, provide a list of businesses, and head up select community events. This group of volunteers is committed to the organization's mission and works hard to support our community and other organizations.

The annual Lake Elmo 4th of July Kids Parade is coming up in about 3 weeks and has nearly doubled in size each year. After 36 years, this special tradition that started as a grass-roots parade with a handful of Lake Elmo children, has required additional planning to ensure safety and a successful event. [Connect Lake Elmo](#) has partnered with The City of Lake Elmo - Government, Lake Elmo Fire Department, The Washington County Sheriff's Office, The [Lake Elmo Rotary Club](#), and other local organizations/businesses to plan another great event. Thank you to the current Board and all previous volunteers who have made this parade possible.

Get Involved

Please consider volunteering for a few hours on the 4th of July to help with the various activities and stations. Visit <https://connectlakeelmo.org/4th-of-july> and click on the volunteer opportunities link. Together, we will continue to make Lake Elmo a wonderful place to live.



4th of July Kids Parade

July 4th is less than one month away and the Connect Lake Elmo organization has been busy planning a great celebration in partnership with The City of Lake Elmo, The Washington County Sheriff's Office, The Lake Elmo Fire Department, The Lake Elmo Rotary, and members of the community.

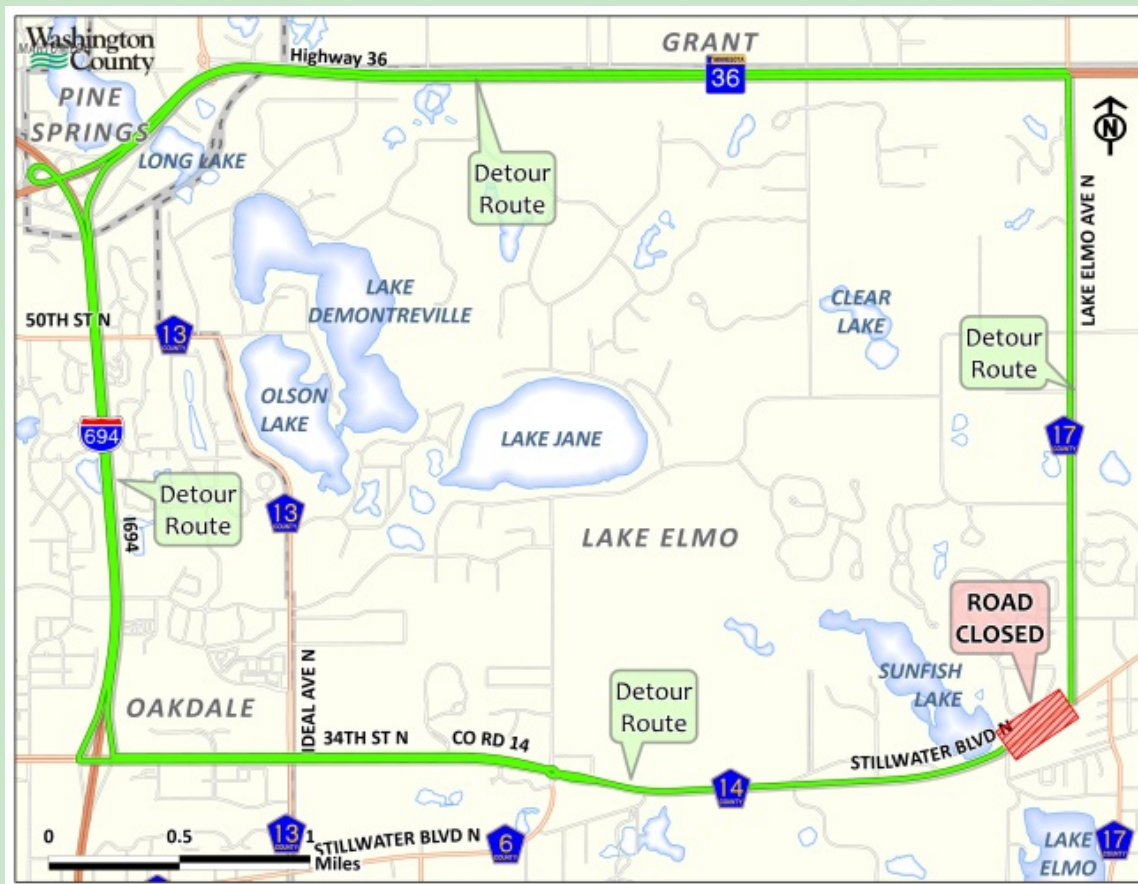
***IMPORTANT* ROUTE CHANGE!** The Kids Parade will now start north of Lion's Park on Layton Ave (just off of Cty Rd 14 near the Lake Elmo Inn Event Center). The Lake Elmo

Kids Parade has grown significantly over the past few years and this adjusted route will allow for more condensed traffic management while keeping the route a similar length. We can also avoid trains passing through the middle of the parade!

Check out www.connectlakeelmo.org for up-to-date information on the parade route, parking, opportunities to volunteer/donate, and all of the fun activities on July 4th. Please spread the word with your friends and neighbors.

Notice of Detour

Washington County has approved a permit request for connection of city utilities affecting a section of County Highway 14 (Stillwater Blvd) in the City of Lake Elmo. This work will require County Highway 14 to be temporarily closed to all traffic between the intersection of CSAH 17 (Lake Elmo Ave N) and just west of Klondike Ave N beginning Wednesday, June 12th, at 7am. The closure is anticipated to last approximately two weeks. Please refer to the map below for more information.



IRRIGATION REMINDERS

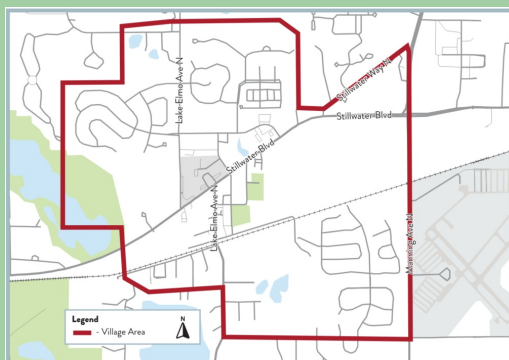
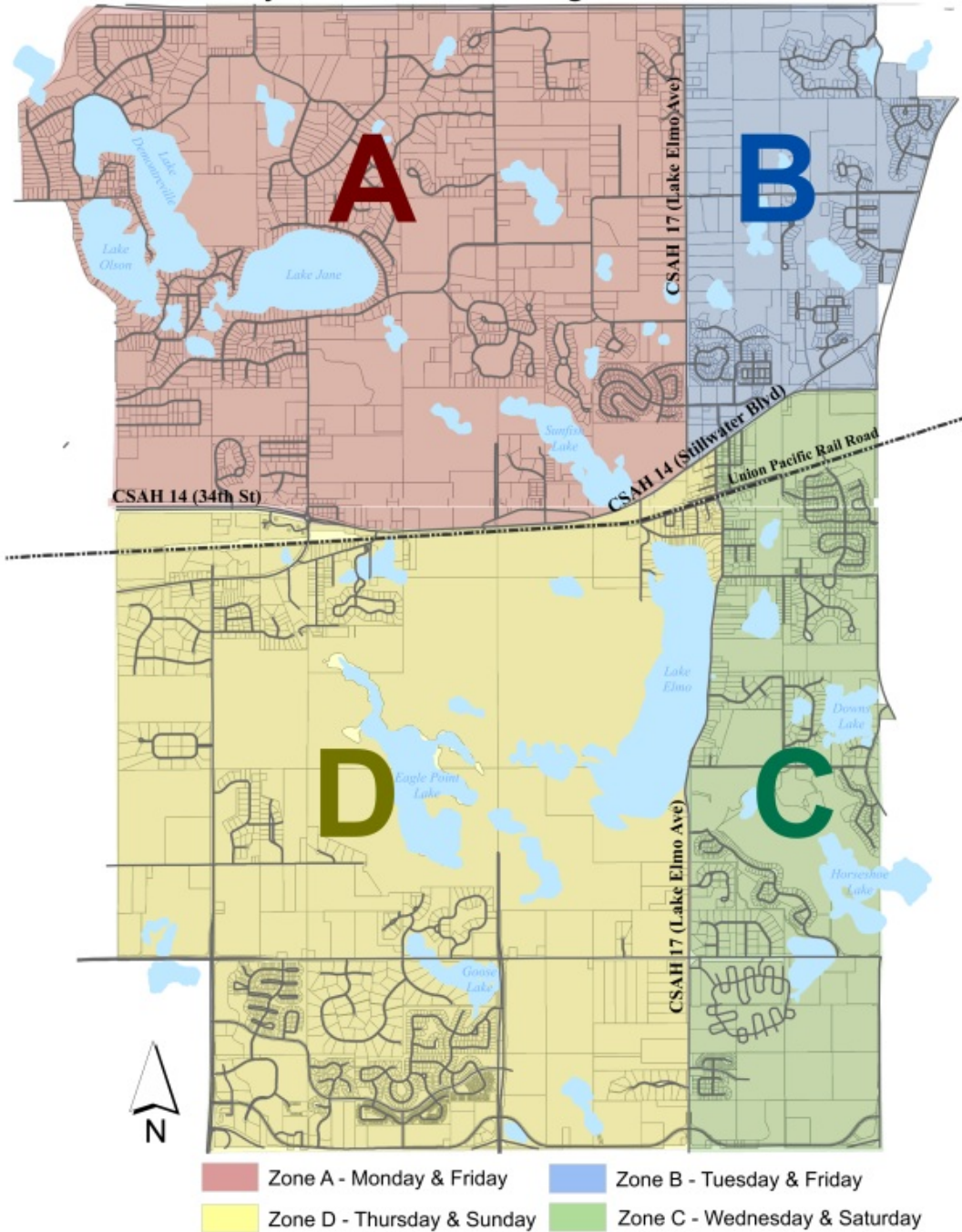
As we head into the irrigation season, please remember the city ordinance allows properties connected to the city water system to irrigate 2 days per week (according to the city irrigation zone map). Irrigation is restricted from the hours of 5am-5pm. Hand watering is allowed at any time and new sod waivers are available if needed.

You can further reduce your water usage by using a smart irrigation controller device. For more information on how to obtain a smart controller or more information on watering restrictions, please visit the city website. [Irrigation](#).

Irrigation enforcement has begun.

Thank you for doing your part to insure we all have sufficient drinking water and fire protection!

City of Lake Elmo Irrigation Zones



Lake Elmo Village Vision Study

The City of Lake Elmo has initiated a review of the historic Village Area and we're looking for your feedback! Please complete the survey at the following link to tell us more about your thoughts on the future of this area. The survey will be open until June 28:
<https://tinyurl.com/LEVillageSurvey>

Private wells and PFAS

If you have questions about your private well water quality, please reach out to the MPCA.

- You can request your well be tested here: <https://webapp.pca.state.mn.us/gw-sampling-req/>
- PFAS well sampling FAQs: [PFAS Well Sampling Frequently Asked Questions \(state.mn.us\)](#)
- Water filtration FAQs: [PFAS Water Filtration Frequently Asked Questions \(state.mn.us\)](#)
- MDH website about PFAS filtration [PFAS and Home Treatment of Water - MN Dept. of Health \(state.mn.us\)](#)
- Private well sampling interactive map: [Private Well Sampling in the East Metro Area \(arcgis.com\)](#)
- If you have questions about private well testing in the East Metro, call 651-757-2903, or email east_metro_pfas_private_well_sampling_inquiries.mpca@state.mn.us
- Information about PFAS from the department of health can be found [Per- and Polyfluoroalkyl Substances \(PFAS\) - MN Dept. of Health \(state.mn.us\)](#)
- MPCA blueprint for Minnesota and PFAS. [Minnesota's PFAS Blueprint | Minnesota Pollution Control Agency \(state.mn.us\)](#)
- Good information to reduce your exposure to PFAS can be found Reducing Exposures: [Per- and Polyfluoroalkyl substances \(PFAS\)-MN Dept. of Health](#) and [PFAS - SixClasses.org](#)

Please visit the City of Lake Elmo's water resources webpage to learn more at lakeelmo.gov/residents/index.php

If you know someone who has concerns about their water, please forward this newsletter to them and encourage them to sign up for the FRESH [HERE](#)



LAKE ELMO FARMER'S MARKET

Market runs 9am to 1 pm on Saturdays.

- Market will be open rain or shine unless inclement weather of high winds or lightning. *Market starts June 15 to August 31st.*
- Staff will be present on all Market days. Any concerns or questions please seek staff out. We will be in center of Market at a table.
- We will have two food trucks this year.
- Parking on West side of L.E. School only due to increase number of vendors.
- We will be selling our Lake Elmo Farmer's Market Cook Book that has Hand written recipe's from vendors and visitors.
- Last year we had 7,190 Visitors to the Market!! The previous year was 5811, we are growing.

As we grow as a community, and a Market, we are seeking volunteers to be an active part in our Market. Please give us a call at 651-261-4493.

Business and Community Working Together/ Lake Elmo Farmer's Market is a 501c3



Metro - I-94 Oakdale to St. Croix: 2022-2024 construction

Traffic impacts

I-94 Oakdale to Lakeland project area map: [View full-size map](#)

All traffic impacts are tentative and weather-dependent.

Current

Lane closures

Through 7 p.m. Wed, June 26

- I-94 is reduced to two lanes in both directions between Hwy 95/St. Croix Trail and the River Bridge

Through October

- I-94 is reduced to two lanes in both directions between Century Ave. and Woodbury Dr.

Ramp closures

5 a.m. Wed, June 5 through late October

- The ramp from Tamarack Rd. to SB I-494 is closed
 - Detour: Tamarack Rd., Weir Dr., Valley Creek Rd. and SB I-494 (PNG)
- The ramp from NB I-494 to Tamarack Rd. is closed
 - Detour: Valley Creek Rd., Bielenberg Dr. and Tamarack Rd. (PNG)

7 p.m. Wed, June 5 through early July

- The ramp from WB I-94 to NB I-494/I-694 is closed
 - Detour: WB I-94, SB I-494, Tamarack Rd. and NB I-494/I-694 (PNG)
- The ramp from SB I-494/I-694 to WB I-94 is closed
 - Detour: SB I-494, Tamarack Rd., NB I-494 and WB I-94 (PNG)

5 a.m. Mon, June 3 through Sat, June 29

- The ramp from WB I-94 to Woodbury Dr./Keats Ave. N. is closed
 - Detour: WB I-94, Inwood Ave. N./Radio Dr., EB I-94 and Woodbury Dr./Keats Ave. N. (PNG)
- The ramp from Woodbury Dr./Keats Ave. N. to WB I-94 is closed
 - Detour: Woodbury Dr./Keats Ave. N., Hudson Rd., Inwood Ave. N./Radio Dr. and WB I-94 (PNG)

7 p.m. Thu, May 30 through 5 a.m. Thu, June 27

- The ramp from WB I-94 to Hwy 95 is closed
 - Detour: WB I-94, Manning Ave., EB I-94 and Hwy 95/St. Croix Trail (PNG)
- The ramp from St. Croix Trail to EB I-94 is closed
 - Detour: St. Croix Trail, WB I-94, Manning Ave. and EB I-94 (PNG)

Through October

- The ramp from 10th St. N. to NB I-694 is closed
 - Detour: 10th St. N., Inwood Ave. N., Stillwater Blvd., Ideal Ave. N., 34th St. N. and NB I-694 (PNG)
- The ramp from Century Ave. to EB I-94 is closed
 - Detour: Century Ave., Hudson Rd., McKnight Rd., Burns Ave. and EB I-94 (PNG)

Upcoming

Information about upcoming traffic impacts will be posted as details become available.

Lane closures



7 p.m. Wed, June 26 through 5 a.m. Thu, June 27

- I-94 is reduced to one lane in both directions between Hwy 95/St. Croix Trail and the River Bridge

More about this project

We will be resurfacing the pavement and making other improvements to I-94 between Hwy 120/Century Ave. and the St. Croix River through fall 2024. The work will improve safety, traffic flow and ride smoothness.

For more information, including construction schedule and upcoming traffic impacts, visit the [I-94 Oakdale to St. Croix project webpage](#). If you have questions, please [contact the project team](#).

 <p>Payment Portal Make a Payment, enroll in Auto-Pay & e-Billing, view your payment and bill history, and more!</p> <p>Go to Payment Portal</p>	 <p>One-Time Payment No time to login? Make a quick, one-time payment here.</p> <p>One-Time Payment</p>
--	---

Attention – NEW Utility Billing Payment Portal

We have moved to an intuitive new Utility Billing Portal called Paya. Grab your City of Lake Elmo utility account number and proceed to Paya at the link below to register, manage your account, set up autopay, or make payments.

<https://lakeelmo.payacp.com/home>

If you need assistance, reach out to us at RNess@LakeElmo.org or call 651-747-3906.

Note: The former platform, PSN, will be deactivated prior to the next bills in July 2024. Make the change now to avoid late payments and penalties.



Tablyn and Pebble Park Courts are Finished!!!

The reconstruction of two separate playing surfaces are finally complete and

available for use. The city has added 4 pickle ball and 1 tennis court at our Tablyn Park location and added up to 6 potential pickle ball courts and 1 tennis court at Pebble Park. Courts can be reserved for daily use up to 3 hours, please refer to the City's web site for more information.

Looking to make a donation or have a suggestion for a better park experience? Please contact the PW department or fill out a request form on the City's Park web page.

City park reservations are now listed on our website

Please visit www.lakeelmo.org. City Parks that hold rentals for amenities may be found on the home page of the website. Once on the home page, click on VIEW ALL EVENTS above the calendar. City Meetings is the default calendar listed. Toggle between parks with the drop down box on the top right corner of the calendar. Please see screenshot below for details.

Lake Elmo Park Reserve is a County Park. Please contact the county at 651.430.8370 for reservation information.

HOME > CALENDAR

Calendar

Currently Viewing: City Meetings for Monday March 18, 2024 (Month View)

March 2024

City Meetings

Sunday	Monday	Tuesday	Wednesday	Thursday	Friday	Saturday
25	26	27	28	29	March, 1	2
3	4	5 Presidential Nomination Primary	6 7:00 am City Council Meeting	7	8	9
10	11 7:00 am Planning Commission Meeting	12 6:00 am Special City Council Meeting 8:30 am City Council Workshop	13	14	15	16



Garden Tour

July 20 | 9-4 | 7 gardens

Oakdale, Lake Elmo, Stillwater, White Bear Lake

Tix: \$15 in advance, \$20 that day

order: z.umn.edu/WCMGTour

more info at: [washingtoncountymg.org](https://www.washingtoncountymg.org)



Bike Repair Stations Added in Two City Parks

The City of Lake Elmo was awarded a grant in 2024 from Living Healthy Washington County. This state-based program works at the local level to support healthier communities by expanding opportunities for active living, healthy eating, well-being and commercial tobacco-free living. This grant allowed the city to install two additional bike repair stations in the community after survey results from 2023 showed biking is the second highest means to visit a city park within Lake Elmo. These bike stations were placed near the trail entrance at Demontreville Wildlife Park and Reid Park.

The Sally Manzara Interpretive Nature Center is open every day
Visit <https://sminc-lake-elmo.org/> for details.



The Sally Manzara Interpretive Nature Center in Lake Elmo's Sunfish Lake Park is operated by a non-profit organization for the benefit of the entire community. We offer programs and events for people of all ages and have "adopted" the Park in the City's program. This work is all funded by donations. Thank you for your support!

Here are some things happening at the SMINC:

- Our next buckthorn removal day is coming up on Saturday, July 13th! Work starts at 9:30 and goes till noon. We have loppers and gloves, bring your energy. Free fresh air and exercise. The first phase of the Restoration of Sunfish Lake Park project has done the initial clearing of 40 acres of buckthorn, replanted oaks, and native grasses, and forbs. For more details <https://sminc-lake-elmo.org/buckthorn/> George has received a \$457,000 DNR contract to clear and restore the rest of the Park – 140 more acres!!! – please contact George at 651-757-5610 if you have questions.
- The SMINC's good friend, Angie Hong, has a book coming out on July 9th. Exploring the St. Croix River Valley is a comprehensive guide to the St. Croix Riverway and its 8,000-square-mile watershed and will be published on University of Minnesota Press. One of her first book events will be at Sunfish Lake Park on July 14 at 10 a.m. It'll start with a guided hike, followed by a Q & A and book signing. To register, visit: <https://www.eventbrite.com/e/908406477227?aff=oddtcreator>
- Summer is here! We had our first summer camp this week, a Little Explorers camp for pre-K kiddos and their families. Our first Wonder Wednesday camp, "Earth's Elementals," is coming up on June 26, from 9 a.m. to 2. We've got lots of other options for camps, from single-day camps to 4-day camps, for age ranges from pre-K to 10 year olds. Check out our summer camp offerings here: <https://www.eventbrite.com/cc/sminc-summer-camps-3007279?utm-campaign=social&utm-content=creatorshare&utm-medium=discovery&utm-term=odclxcollection&utm-source=cp&aff=escb>



Sally Manzara Interpretive Nature Center

SUMMER CAMPS 2024



Sally Manzara Interpretive Nature Center is located next to Sunfish Lake Park in Lake Elmo, Minnesota. The park offers 284 acres of natural area and over 8 miles of trails through forest, wetlands, and prairie.

GET YOUR KIDS OUTDOORS EXPLORING NATURE THIS SUMMER!

Little Explorers

Mondays from 9:30am-11:00am (Newborns to 5-year-olds)
Where families can come together and give the little ones their first experiences in nature. The first hour is structured activity based on the day's theme. The last 30 minutes we encourage open play, to give families an opportunity to explore on their own. **Adults must stay with their children at all times.**

Camp Out – June 10
Flower Power – June 24
Into the Woods – July 1
Pollinators – July 15
Bird Mania – July 29
Bugs! – August 12

Sunfish Explorers

Monday - Thursday from 9am-12 noon
Our four-day camps will encourage and educate the youth of tomorrow about the beauty and importance of a healthy outdoors. Activities include hikes, crafts, games and of course a little education about the outdoors!

Outdoor Adventures - June 17-20
Bees & Butterflies – July 8-11
Birds! - July 22-25
Bugs! – August 5-8
Nature's Kaleidoscope– Aug. 19-22

Wonder Wednesdays

Wednesdays from 9am-2pm
Our one-day, fun-filled, Wonder Wednesdays let kids explore the beautiful outdoor setting and learn about their surrounding environment. It is run by experienced instructors and the days include interpretive education, games, crafts to bring home, free play and hikes.

Earth Elements – June 26
Nature Appreciation – July 17
Nature Theater & Puppetry– July 31
Prairie Explorers – August 14

Camp information and registration: <https://sminc-lake-elmo.org/summer-camp-registration/>
For more information email camps@sminc-lake-elmo.org



Sally Manzara Interpretive Nature Center is operated by Friends of Lake Elmo's Sunfish Lake Park, a 501(c)(3) nonprofit.

651-408-2838 | e-mail: info@sminc-lake-elmo.org | sminc-lake-elmo.org



Do you love fresh, organic veggies? Do you want to support your local food system? [Cimarron Community Farm's](#) 2024 Summer CSA program is open now and a perfect way for your family to eat fresh

all season long!

- 16 weeks of fresh, local, organic produce (mid-June to September)
- \$530 for a summer share with flexible payment options
- On-farm pick-up, Wednesdays 4pm-7pm
- A typical box may include fresh herbs, tomatoes, zucchini, carrots, broccoli, lettuce, kale, eggplant, onions, and more

Sign up now to access the best produce in town!

cimarroncommunityfarm.com |

cimarroncommunityfarmMN@gmail.com | 952-607-0157

SCHOOL SUPPLY SWAP

WEDNESDAY, AUGUST 7
4 – 6 P.M.

ENVIRONMENTAL CENTER
WOODBURY



DONATIONS NEEDED!

Washington County is collecting gently used school supplies for a school supply swap in August. Donate gently used items at the Environmental Center, Washington County Libraries, and Public Health & Environment office locations through August 2.



Scan to find a donation site!
WashCoRecycles.com/Reuse

ACCEPTED ITEMS

Donations should be gently used items that students would normally discard at the end of the school year.

- Pencils/pens/markers/crayons
- Notebooks
- Lined or graphing paper
- Calculators (working)
- Rulers/protractors/compasses
- Scissors
- Erasers
- Glue sticks
- Watercolor paints
- Pencil cases
- Pencil sharpeners
- Backpacks (working zippers, no rips/tears/stains)
- 3-ring binders (1-inch only)
- Pocket folders

WashCoRecycles.com/Reuse
651-275-7475

Washington
County

Recycling at Home

Empty and rinse all containers

Glass Bottles & Jars



Metal Food & Beverage Cans



Plastic Bottles & Containers



Cartons



Paper & Cardboard



When in doubt, keep it out. Putting these items in your recycling cart does more harm than good.

NO!

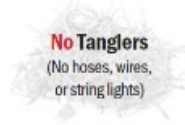
**Do Not Bag
Recyclables**



**No Plastic
Bags or Wrap**



No Tangles
(No hoses, wires,
or string lights)



**No Shredded
Paper**



www.co.washington.mn.us/publichealth | 651-430-6655

Washington
County

City of Lake Elmo | 3880 Laverne Avenue North | Lake Elmo, MN 55042 US

[Unsubscribe](#) | [Update Profile](#) | [Constant Contact Data Notice](#)



Try email marketing for free today!