



# fresh

Your Weekly Source for City News and Information

## Public Meetings Next Week:

- Parks Commission Monday, September 16th, 6:30 p.m.
- City Council Meeting Tuesday, September 17th, 7:00 p.m.



[Visit our website](#)

[Join us on Nextdoor](#)





*Our Mission is to Provide Quality Public Services in a Fiscally Responsible Manner in Partnership with our Community.*

**NOTICE OF MEETING**

**City of Lake Elmo Parks Commission  
3880 Laverne Avenue North  
September 16, 2024  
6:30 p.m.**

**AGENDA**

1. Call to Order
  2. Pledge of Allegiance
  3. Approve Agenda
  4. Approve Minutes
    - a) August 19<sup>th</sup>, 2024
  5. Public Comment
  6. Resignation of Commissioner Vittorio Bloyer
  7. Lake Elmo Baseball Donation
  8. Friends of Sunfish Letter of Intent
  9. Legacy Development Park Name
  10. Park Construction
  11. Communications
  12. Adjourn
-



## NOTICE OF MEETING

City Council Meeting

Tuesday, September 17, 2024, 7:00 P.M.

City of Lake Elmo | 3880 Laverne Avenue North

### AGENDA

**A. Call to Order/Pledge of Allegiance**

**B. Approval of Agenda**

**C. Approval of Minutes**

1. August 27, 2024, Special Meeting & Workshop; September 3, 2024; September 10, 2024

**D. Public Comments/Inquiries**

**E. Presentations**

**F. Consent Agenda**

2. Approve Payment of Disbursements
3. Approve Boulder Ponds 4<sup>th</sup> Addition Landscape Security Release
4. Approve Highpointe Crossing Preliminary Plat and OP PUD; *Resolution 2024-093, Ordinance 2024-16, Resolution 2024-094*
5. Approve Inwood 4<sup>th</sup> Addition Landscape Security Release
6. Approve Ebertz Addition Security Reductions
7. Approve Bridgewater Village Development Agreement; *Resolution 2024-092*
8. Accept Oakdale Gun Club Donation to the Fire Department – *Resolution 2024-097*
9. Approve Youth Service Bureau Contract
10. Approve Pay Request No. 4 for 2024 Street and Utility Improvements
11. Approve Pay Request No. 3 for Stillwater Blvd. Trunk Watermain Improvements
12. Approve Pay Request No. 1 for the 15<sup>th</sup> St. Improvements
13. Call for Final Assessment Hearing for 2024 Street and Utility Improvements (Carriage Station & Jamaca Court)

**G. Regular Agenda**

14. Old Village Zoning Text Amendment and Design Standards Update; *Ordinance 2024-14; Resolution 2024-098*
15. Old Village Moratorium; *Ordinance 2024-15*
16. Authorize Preliminary Design, Geotechnical Services and Feasibility Report for the 2025 Street and Utility Improvements – *Resolution 2024-101*
17. Approve Well 2 Equipment Procurement Plans and Specifications and Authorize Ad for Bids – *Resolution 2024-100*
18. Preliminary 2025 Budget and Tax Levy – *Resolution 2024-099*

**H. Council Reports**

**I. Staff Reports**

**J. Adjourn**

---

Full meeting packets and meeting minutes can be accessed here:  
[Agendas and Minutes](#)

---



# OPEN HOUSE

**Monday, September 23**  
**4:00pm - 8:00pm**  
**3880 Laverne Avenue N**

*Please join us at the Lake Elmo Fire Department Open House. This is your chance to meet your firefighters, sheriff deputies & Lakeview EMS staff.*

**Station Tours - Live Fire Demonstrations - Car Seat Safety with Regions Hospital - Seat Belt Use with MN Dept. of Public Safety - Hands Only CPR - Fire Prevention Talks & So Much More!**



## Lake Elmo Family Donates Land to MN Land trust

Neil, Deb, and John Krueger grew up in Stillwater and began planting Christmas trees on their Lake Elmo farm in 1983, always dreaming of a way to preserve their land forever. So in 2024 the Krueger's donated their land to the Mn. Land Trust, ensuring it would remain a green space forever. They also own an 18 acre tree farm, already in Mn. Land Trust, on Manning Ave. by the airport. Together there are 54 acres preserved forever. This year the Krueger's will celebrate 70 years of Christmas trees in the St. Croix Valley.

**LAKE ELMO**

**AERO**

**ANNUAL OPEN HOUSE**

**SATURDAY  
SEPT 14TH  
12:00-4:00PM**

**LAKE ELMO  
AIRPORT  
3275 MANNING  
AVE N**

- Bouncy Slide
- Food Trucks
- Aircraft displays
- Prizes

651-777-1399

Info@lakeelmoaero.com

## Washington County Long Range Transportation Plan

Washington County is seeking public input on its first ever Long Range Transportation Plan. Input received will be shared with decision makers to inform the direction and outcomes of the Long Range Transportation Plan. To help the project team understand public experience of the existing network and priorities for future investments, visit this link: [Plan](#) A summary of the worksessions held earlier this year is below.

# Long Range Transportation Plan City and Township Work Session Event Summary

February 2024

## Work Session Format & Desired Outcomes

As part of the initial stakeholder engagement for the Long Range Transportation Plan, Washington County invited City and Township elected officials and staff to participate in work sessions to provide an overview of the project and facilitate discussion on community transportation issues, goals, and priorities. Two, 90-minute, work sessions were held on February 7<sup>th</sup> and 8<sup>th</sup> with an opportunity for online engagement for those unable to attend.

### Promotion

The work session series was promoted by direct agency contact. County staff reached out to City and Township staff via email to notify them of the Long Range Transportation Planning process and to invite local agency participation in the work sessions. County staff held two drop-in virtual opportunities for local agency staff to ask questions ahead of identifying the appropriate participants based on their practices and availability. County staff relied on local agency staff to circulate the information and communicate planned participation of elected officials and/or staff.

### Participation

A combination of elected officials and staff participated in the work sessions based on each agency's preference and/or availability. All five County Commissioners participated in one or both in-person work sessions. There was one online participant.



**26** individuals participated in the work sessions either in-person or online...

**65%** elected participation  
**35%** staff participation

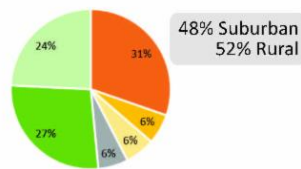
...from **17** communities around Washington County.

*There are 33 Cities/Townships in the County. The work sessions had just over 50% participation.*

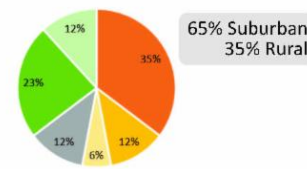
### Community Types

The Metropolitan Council's Community Designations were referenced in reviewing feedback from the work sessions to understand if different priorities rise to the top across the different community types.

Community Designations in Washington County



Work Session Participation by Community Designation



- Suburban
- Suburban Edge
- Emerging Suburban Edge
- ESE/DR
- Diversified Rural
- Rural Residential

### Transportation Hot Topics

Each participating agency was asked to share "Hot Topics" related to transportation in their communities. Hot Topics could cover priorities, common comments, or what is/isn't working well from the perspective of elected officials, staff, or community members.

The most common themes included:



**Bicycle and Pedestrian Infrastructure and Transit**

The next most common themes were related to infrastructure maintenance/condition, speeds, and safety.



**Community Designation Differentiator:**

Transit was not listed by any participating rural communities as a hot topic. Bike/ped was the most common theme followed by condition and speeds.

**Participating Agencies:** Afton, Bayport, Cottage Grove, Forest Lake, Hugo, Lake Elmo, Mahtomedi, May Township, Newport, Oak Park Heights, Oakdale, Scandia, St. Paul Park, Stillwater, Stillwater Township, West Lakeland Township, and Woodbury



## Transportation Priorities

System condition, safety, and regional connectivity will remain key themes of the County's transportation goals and policies. Beyond these themes, participants were asked to identify transportation characteristics to (re)emphasize in the County's Long Range Transportation Plan.



### Characteristic Prioritization



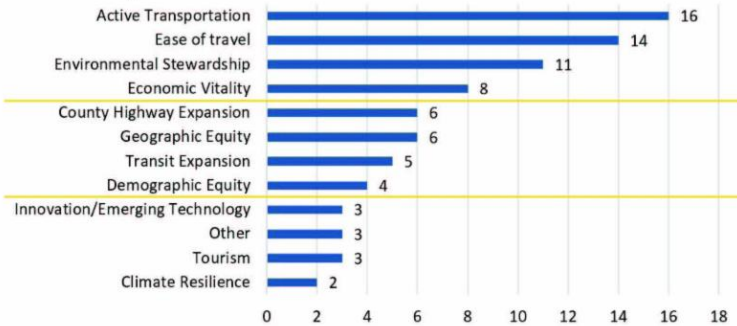
### Community Designation Differentiator:

Both suburban and rural communities listed Active Transportation and Ease of Travel as high priorities. Suburban communities placed a higher focus on economic vitality where rural communities placed a higher focus on environmental stewardship.

Twelve characteristics were presented at the work sessions and participants were asked to select their community's top four priorities. Later, participants were asked to select their next four highest priority characteristics - effectively grouping the characteristics into three categories: highest; secondary; and lowest priority characteristics. As agencies had varying numbers participants, total counts were adjusted so that each agency could only select each characteristic once.

Whether reviewing the responses for the top-four characteristics (as shown below) or including secondary priorities on a weighted basis, the order of characteristics between highest, secondary, and lowest groupings, remained largely the same.

### Select Your Top-Four Characteristics:



Participants were given the opportunity to select "other" and describe characteristics they did not see represented. Participants identified safety, snowmobile/ATV trails, livability, and agency coordination as high or secondary priorities.

### What are the challenges/barriers to achieving positive outcomes related to transportation in your community?

- Funding
- Jurisdictional authority in operation and design
- Right-of-way constraints
- Population density driving improvements/fund allocation
- Balancing vehicular efficiency and livability/walkability

### What would you like to see the County's Long Range Transportation Plan address in order to support or bolster goals/policies in your community?

- Consistent design standards/flexibility in application based on context
- Long-term infrastructure maintenance plan
- Agency participation

**County Project Manager:**  
Madeline Dahlheimer, Senior Planner  
madeline.dahlheimer@co.washington.mn.us  
651-430-4338



## IRRIGATION REMINDERS

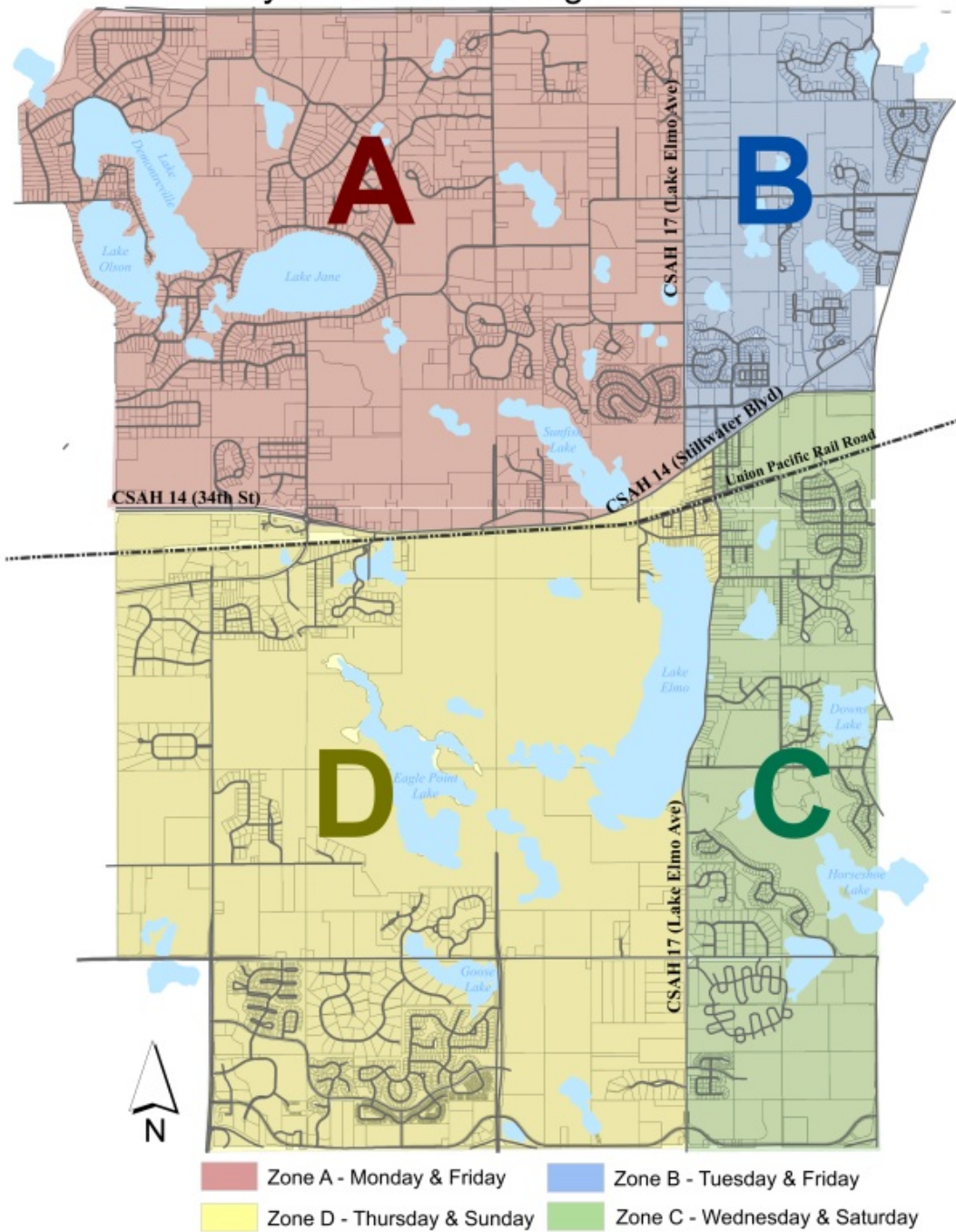
During irrigation season, please remember the city ordinance allows properties connected to the city water system to irrigate 2 days per week (according to the city irrigation zone map). Irrigation is restricted from the hours of 5am-5pm. Hand watering is allowed at any time and new sod waivers are available if needed.

You can further reduce your water usage by using a smart irrigation controller device. For more information on how to obtain a smart controller or more information on watering restrictions, please visit the city website. [Irrigation](#).

Irrigation enforcement has begun.

Thank you for doing your part to insure we all have sufficient drinking water and fire protection!

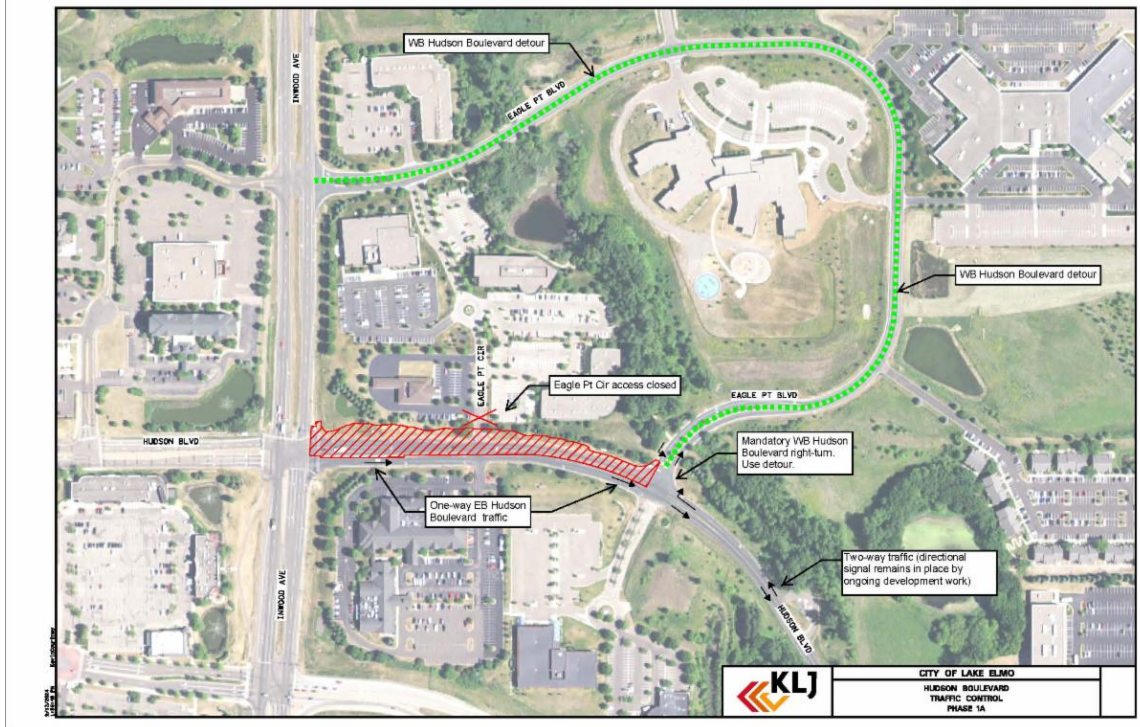
# City of Lake Elmo Irrigation Zones



## HUDSON BOULEVARD - TRAFFIC CHANGE

Starting Monday, September 16th Hudson Boulevard will be open to traffic eastbound only between Inwood Avenue and Eagle Point Boulevard. Please see the detour in the exhibit below.





# CHLORINE

**Good for Swimming Pools and Spas**

**Bad for Lakes and Rivers**



*How to safely dispose of chlorinated water*

## Why should I be concerned?

Water from swimming pools and hot tubs (spas) often contains high levels of chlorine, bromine, and copper. It is also very corrosive due to low pH levels and may contain organic matter. If you discharge untreated pool or spa water into the street or local waters, you can kill fish and aquatic life.

**It is illegal to discharge chlorinated water to a municipal storm sewer system!**



## Can treated pool or spa water be discharged to the storm sewer system?

Yes, but only if the water has been dechlorinated (to less than 0.1 mg/L of chlorine), has a pH range of 7-8, consists only of water, and is discharged in a way that does not cause nuisance conditions or erosion problems.



## How can I get rid of chlorine?

Stop adding chlorine and leave the water exposed to the air for three to five days. The water will become naturally dechlorinated.

You can also use de-chlorinating chemicals from a pool or spa supplier to remove the chlorine more quickly. Chlorine and pH test kits are available to test levels in water.



## Can I discharge my pool or spa water into my yard?

Yes, but only if tests show that the water is de-chlorinated (to less than 0.1 mg/L of chlorine) has a pH of 7-8, and is free of other debris.

The water should be directed onto a vegetated surface so that it soaks into the ground. The water should not flow onto any other person's property or create nuisance conditions such as erosion or ponding for a prolonged period.

## July 25th Safe Drinking Water Meeting Replay is Available

The City of Lake Elmo, along with the Minnesota Pollution Control Agency (MPCA) and Minnesota Department of Health (MDH) hosted an informational meeting regarding PFAS, safe drinking water and private wells on July 25, 2024, where presentations were given by MPCA, MDH and Lake Elmo's City Engineer



as well as a question and answer period for the participants. The presentation slides are available [here](#) as well as printed copies are available at City Hall. A recording of the meeting is available [here](#).

---

## Private Wells and PFAS



If you have questions about your private well water quality, please reach out to the MPCA.

- You can request your well be tested here: <https://webapp.pca.state.mn.us/gw-sampling-req/>
- PFAS well sampling FAQs: [PFAS Well Sampling Frequently Asked Questions \(state.mn.us\)](#)
- Water filtration FAQs: [PFAS Water Filtration Frequently Asked Questions \(state.mn.us\)](#)
- MDH website about PFAS filtration [PFAS and Home Treatment of Water - MN Dept. of Health \(state.mn.us\)](#)
- Private well sampling interactive map: [Private Well Sampling in the East Metro Area \(arcgis.com\)](#)
- If you have questions about private well testing in the East Metro, call 651-757-2903, or email [east\\_metro\\_pfas\\_private\\_well\\_sampling\\_inquiries.mpca@state.mn.us](mailto:east_metro_pfas_private_well_sampling_inquiries.mpca@state.mn.us)
- Information about PFAS from the department of health can be found [Per- and Polyfluoroalkyl Substances \(PFAS\) - MN Dept. of Health \(state.mn.us\)](#)
- MPCA blueprint for Minnesota and PFAS. [Minnesota's PFAS Blueprint | Minnesota Pollution Control Agency \(state.mn.us\)](#)
- Good information to reduce your exposure to PFAS can be found Reducing Exposures: [Per- and Polyfluoroalkyl substances \(PFAS\)-MN Dept. of Health](#) and [PFAS - SixClasses.org](#)

Please visit the City of Lake Elmo's water resources webpage to learn more at [lakeelmo.gov/residents/index.php](https://lakeelmo.gov/residents/index.php)

If you know someone who has concerns about their water, please forward this newsletter to them and encourage them to sign up for the FRESH [HERE](#)



## County Board approves grants for Lake Elmo Park Reserve improvements

The Washington County Board of Commissioners approved \$1.75 million in grant funding with the Metropolitan Council for the purchase and installation of a new play structure at Lake Elmo Park Reserve Aug. 20.

The play structure at Lake Elmo Park Reserve is over 25 years old. The 2023 legislature approved state bonds to be allocated to the regional park system through the Met Council. Funds from the Met Council will be used to replace the current play structure equipment, perform site work, make parking lot upgrades, and improve access. Site prep will begin in 2024, and construction will be completed in spring 2025.

The first grant is a Modernization Grant for \$700,000. Modernization Grant funds are meant to improve or replace aging infrastructure within the regional park system. The second is a Park Legacy Grant for \$1,053,680.96. The 2023 legislature approved funding for the Metropolitan Council to allocate state funds towards the regional park system.

---

**Our neighbors in Stillwater have started a Cadet Unit within the Stillwater Police Department. Please share with any youth ages 14-20 who may be interested in a career in law enforcement!**

# Join the Stillwater Police Cadet Program



Stillwater Police Department

## About the Police Cadet Program

Are you interested in a career in law enforcement and want to make a positive impact in your community? Join the Stillwater Police Department Cadet Unit!

This hands-on program provides an incredible opportunity to learn from experienced safety professionals, gaining the knowledge, skills and practical experiences necessary to succeed in law enforcement.

Don't miss out on this incredible opportunity to jump-start your future and make a difference in your community. Sign up for the Stillwater Police Department Cadet Unit today.



Meetings will occur every other Sunday starting September 15, 2024 to April 27, 2025 | 4:00 PM to 8:00 PM



Stillwater Police Department  
216 4th St N  
Stillwater, MN 55082

## Qualifications

- Age 14-20
- Enrolled in school or have a high school diploma or equivalent
- Good moral character
- No prior arrests/convictions
- Must pass a background check
- Good physical health

## How to Apply

- Email Officer Johnson [Cjohnson@stillwatermn.gov](mailto:Cjohnson@stillwatermn.gov) to request 'Cadet Program Forms'
- Complete required forms
- Pass a background check

Applicants will be notified once background check is returned

## Questions?

Officer Johnson

- [Cjohnson@stillwatermn.gov](mailto:Cjohnson@stillwatermn.gov)
- 651-351-4905



[www.stillwatermn.gov](http://www.stillwatermn.gov)

**m** DEPARTMENT OF  
TRANSPORTATION

ROAD  
CLOSED

## Metro - I-94 Oakdale to St. Croix: 2022-2024 construction

Traffic impacts

All traffic impacts are tentative and weather-dependent.

## Current

### Lane closures

Through 7 p.m. Wed, Sept. 18

- EB I-94 is reduced to three lanes between Century Ave. and Woodbury Dr.
  - Traffic going east past the Woodbury Dr./Keats Ave. N. exit should use the left two lanes
  - Traffic exiting onto I-494, I-694, Radio Dr./Inwood Ave. N. or Woodbury Dr./Keats Ave. N. should use the right lane

Through late October

- WB I-94 is reduced to two lanes between Woodbury Dr. and Century Ave.

### Ramp closures

4 a.m. Mon, Aug. 12 through 7 p.m. Wed, Sept. 18

- The ramp from EB I-94 to NB I-694 is closed
  - Detour: [SB I-494, Tamarack Rd. and NB I-494/I-694 \(PNG\)](#)
- The ramp from SB I-494 to EB I-94 is closed
  - Detour: [SB I-494, Tamarack Rd., NB I-494 and EB I-94 \(PNG\)](#)

Through Fri, Sept. 20

- The ramp from Tamarack Rd. to SB I-494 is closed
  - Detour: [Tamarack Rd., Weir Dr., Valley Creek Rd. and SB I-494 \(PNG\)](#)
- The ramp from NB I-494 to Tamarack Rd. is closed
  - Detour: [Valley Creek Rd., Bielenberg Dr. and Tamarack Rd. \(PNG\)](#)

Through October

- The ramp from 10th St. N. to NB I-694 is closed
  - Detour: [10th St. N., Inwood Ave. N., Stillwater Blvd., Ideal Ave. N., 34th St. N. and NB I-694 \(PNG\)](#)
- The ramp from Century Ave. to EB I-94 is closed
  - Detour: [Century Ave., Hudson Rd., McKnight Rd., Burns Ave. and EB I-94 \(PNG\)](#)

### Ramp access changes

4 a.m. Mon, Aug. 12 through 7 p.m. Wed, Sept. 18

- EB I-94 access to Radio Dr./Inwood Ave. N. ramps must follow detour
  - Detour: [SB I-494, Tamarack Rd., NB I-494, EB I-94 and Radio Dr./Inwood Ave. N. \(PNG\)](#)
- EB I-94 access to Woodbury Dr./Keats Ave. N. ramps must follow detour
  - Detour: [SB I-494, Tamarack Rd., NB I-494, EB I-94 and Woodbury Dr./Keats Ave. N. \(PNG\)](#)

## Upcoming

Information about upcoming traffic impacts will be posted as details become available.

### Lane closures

7 p.m. Wed, Sept. 18 through 5 a.m. Thu, Sept. 19

- EB I-94 is reduced to one lane between Century Ave. and Woodbury Dr.

5 a.m. Thu, Sept. 19 through late October

- EB I-94 is reduced to three lanes between Century Ave. and Woodbury Dr.
  - Traffic going east past the Woodbury Dr./Keats Ave. N. exit should use the left two lanes
  - Traffic exiting onto I-494, I-694, Radio Dr./Inwood Ave. N. or Woodbury Dr./Keats Ave. N. should use the right lane

### Ramp closures

7 p.m. Wed, Sept. 18 through mid-October

- The ramp from NB I-494 to EB I-94 is closed
  - Detour: [NB I-494/I-694, 10th St. N., SB I-694 and EB I-94](#)
- The ramp from EB I-94 to SB I-494 is closed

- Detour: EB I-94, NB I-694, 10th St. N. and SB I-694/I-494

7 p.m. Wed, Sept. 18 through 5 a.m. Sat, Sept. 21

- The EB I-94 ramps to/from Radio Dr./Inwood Ave. N. are closed
- The EB I-94 ramps to/from Woodbury Dr./Keats Ave. N. are closed

### More about this project

We will be resurfacing the pavement and making other improvements to I-94 between Hwy 120/Century Ave. and the St. Croix River through fall 2024. The work will improve safety, traffic flow and ride smoothness.

For more information, including construction schedule and upcoming traffic impacts, visit the [I-94 Oakdale to St. Croix project webpage](#). If you have questions, please [contact the project team](#).



### Halloween Costume Swap

Date: Wednesday, October 2

Time: 4 – 6 p.m.

Location: South Environmental Center 4039 Cottage Grove Drive, Woodbury, MN 55129.

Stop by to shop for free, gently-used costumes.

- Donations are not required to get a costume.
- Limit one costume per child.
- Remaining costumes will be donated.
- Child does not need to be present.

### Other information

- For questions, contact Washington County Public Health and Environment at 651-275-7475.
- For details on donating costumes, [click here](#).

# Fall into Winter Gardening

**Tuesday, September 17th at 6:30 p.m.**

Lake Elmo Library - 3537 Lake Elmo Ave N., Lake Elmo



Master Gardener Tyler Torgrimson will be at Lake Elmo Library presenting on preparing your garden for winter - an essential step to ensure its vitality for the next growing season. It involves several tasks such as mulching perennials, protecting trees and shrubs from harsh conditions and others. In this class, you will learn about how to put your garden to bed and about what to do for your garden and landscape between September and February. U of M Extension Master Gardener volunteers are eager to share research-based gardening best practices that promote healthy landscapes, healthy foods, and healthy lives with the people in their community.

**Registration encouraged but not required.**



Find events and register:  
**WashCoLib.org/Events**

**Washington**  
**County**  
LIBRARY

## Pilot Park Sand Volleyball Court is Complete

Construction of a new sand volleyball court in Pilot Park is complete! Pilot Park, located within walking distance of downtown in Easton Village currently has a soccer field and playground. Completion of the sand volleyball court adds to the availability



for playing this growing sport in our area.



## Pebble Park Upgrades are Underway!

Out with the old! The Public works department had began removal of the old playground set at Pebble Park. Construction of a new playground set will begin in September, which will consist of a new tower structure and slides. Over the next several weeks PW staff will be preparing the site for construction. Please stay clear of the site during construction.



The Public Works Department has begun preparing Demontreville Park for a new playground set. Removal of the 34 year old playset is complete. Visitors can expect some construction of the area over the next few weeks to prepare the new location. The new playground is expected to arrive in October 2024.





The sand volleyball court is finished at Carriage Station Park. Public Works staff put finishing touches on the project this week.

This court adds to the recently added sand court in Pilot Park and the original courts in Lions Park.

---

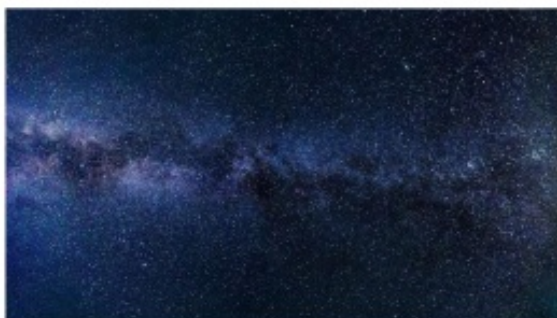
The Sally Manzara Interpretive Nature Center is open every day  
Visit <https://sminc-lake-elmo.org/> for details.



The Sally Manzara Interpretive Nature Center in Lake Elmo's Sunfish Lake Park is operated by a non-profit organization for the benefit of the entire community. We offer programs and events for people of all ages and have "adopted" the Park in the City's program. This work is all funded by donations. Thank you for your support!

Here are some things happening at the SMINC:

- Our Monthly Buckthorn Removal for September is coming up on Saturday, September 14, starting at 9:30 a.m. We have done a lot of work in the park getting rid of this destructive invasive, and this has allowed for regrowth of some native species, but there's plenty more to do! While the morning is still cool, why not come by Sunfish Lake Park and clear some buckthorn? It's great exercise, and the feeling of doing something good for your local ecosystem will stay with you all day!
- We have two events coming up this fall. On Sunday, September 15 at 2 p.m. our Programs Director, Verity Davis, will be presenting Conservation at Home. Come and learn some simple ways to participate in conservation practices at home. Verity will talk about the small behavioral changes you can make that can have a big impact. We will also discuss some of those important programs available to citizens through the state. This is a free event!



Like to look at the beautiful night sky but not sure what the heck is up? Then join us on Saturday, October 19 at 6 p.m. for Stargazing Date Night. We are thrilled to have the Minnesota Astronomical Society join us for this event to teach us all about the cosmos. The cost of this event is \$15 per person.

# Gardening classes



## **Native Plant Seeds:**

*Harvesting, cleaning and storing*

- Sept. 9, 6:30-7:30, Bayport Public Library
- Sept. 12, 6:30-7:30, Hardwood Creek Library, Forest Lake
- Sept. 19, 10:30-11:30 am, Wildwood Library, Mahtomedi

## **Fall into Winter:**

*Garden tasks that help protect pollinators*

- Sept. 17, 6:30-7:30, Lake Elmo Library
- Sept. 28, 10-11 am, Wildwood Library, Mahtomedi

**Register here: [washingtoncountymg.org](http://washingtoncountymg.org)**

More classes on our website including canning, composting and buckthorn removal.  
Hosted by UM Extension Washington County Master Gardener Volunteer Program.  
Some classes may have a small fee.



**WASHINGTON COUNTY MASTER GARDENER VOLUNTEER PROGRAM**

# STORMWATER SMART LAWN CARE



When water from rain, snow, or sleet flows over the ground, it's called "stormwater." Stormwater can pick up debris, litter, fertilizer, and pesticides used for lawn care. And when that stormwater flows into street gutters, storm drains, and downstream, it can pollute rivers, lakes, and streams. Follow these simple pollution solutions to help keep local waterways clean and healthy!



## DON'T MOW TOO LOW

Only remove 1/3 of the grass blade height and leave clippings on lawn to allow nutrients to return to the soil—they act as a natural fertilizer!



## CAREFUL WITH CHEMICALS

Read the label when applying pesticides and fertilizers, use them sparingly, and avoid applying them to pavement. When there is rain in the forecast, any chemicals you apply can wash downstream.



## ONLY RAIN IN THE DRAIN

Don't rake, sweep, or hose debris down the storm drains. Leaves, yard clippings, and trash can clog storm pipes, causing floods and polluted waterways.



## CURB YOUR WATER WASTE

Direct sprinklers toward the lawn and away from pavement to save water and keep chemicals and debris out of storm drains. Check out [www.epa.gov/watersense](http://www.epa.gov/watersense) for more tips to save water!

Chemicals and other household hazardous waste don't belong in the recycling bin!



Bring these items to your local household hazardous waste facility.



City of Lake Elmo | 3880 Laverne Avenue North | Lake Elmo, MN 55042 US

[Unsubscribe](#) | [Update Profile](#) | [Constant Contact Data Notice](#)



Try email marketing for free today!