



# fresh

Your Weekly Source for City News and Information

---

## Public Meetings Next Week:

- None

---

Visit our website

Join us on Nextdoor



---

Full meeting packets and meeting minutes can be accessed here:  
[Agendas and Minutes](#)

---



# OPEN HOUSE

**Monday, September 23**

**4:00pm - 8:00pm**

**3880 Laverne Avenue N**

*Please join us at the Lake Elmo Fire Department Open House. This is your chance to meet your firefighters, sheriff deputies & Lakeview EMS staff.*

**Station Tours - Live Fire Demonstrations - Car Seat Safety with Regions Hospital - Seat Belt Use with MN Dept. of Public Safety - Hands Only CPR - Fire Prevention Talks & So Much More!**

---

## **Early/Absentee Voting for the General Election Begins September 20th**

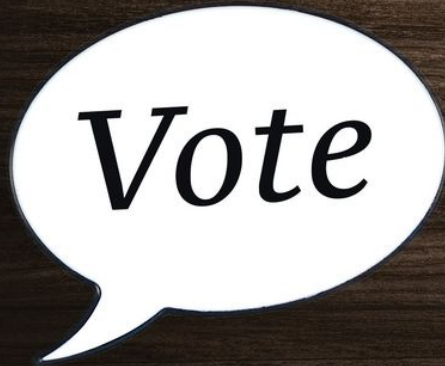
Voters may request a ballot be mailed to them at [SOS](#) or vote in person at four vote centers Monday-Friday from 8 a.m.-4:30 p.m. See the county's website for more information: [WashingtonCountyMN.gov/elections](http://WashingtonCountyMN.gov/elections).

The Early Vote Center locations are:

- Cottage Grove Service Center: 13000 Ravine Parkway, Cottage Grove.
- Forest Lake Headwaters Service Center: 19955 Forest Road N., Forest Lake.
- Washington County Government Center: 14949 62nd Street. N., Stillwater.
- Woodbury City Hall: 8301 Valley Creek Road, Woodbury.

*[Starting October 18, in-person absentee voting will also be available at Oakdale*

**General Election Early Voting  
September 20 through  
November 4**



**Washington  
County**  
ELECTION  
ADMINISTRATION

# WE'RE HIRING



## Public Works Operator

### JOIN OUR TEAM!

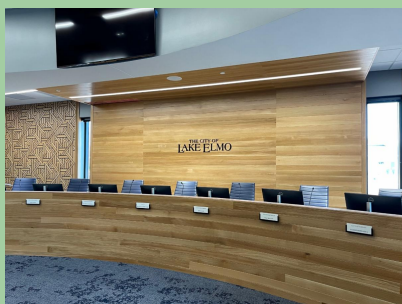
Are you ready to make a difference in your community? We're looking for a dedicated Public Works Operator to help keep our city running smoothly! In this hands-on role, you'll provide skilled operations and maintenance for essential infrastructure—think water, sewer, stormwater, parks, and streets. If you're someone who loves working outdoors and takes pride in maintaining the city, Lake Elmo wants to hear from you!

### GREAT BENEFITS!

- ✓ Free Life and Disability Insurance
- ✓ 15 days PTO
- ✓ 13 paid holidays
- ✓ Medical and Dental
- ✓ PERA Retirement Plan

Visit our website for more details and to complete an application.

[www.lakeelmo.gov](http://www.lakeelmo.gov)



### City Seeking Commission and Economic Development Authority Applicants

The City of Lake Elmo is currently accepting applications to serve on the Parks and Planning Commissions and the EDA. For more information and application form, please visit the city's website: [City Website](#)

### IRRIGATION REMINDERS

During irrigation season, please remember the city ordinance allows properties connected

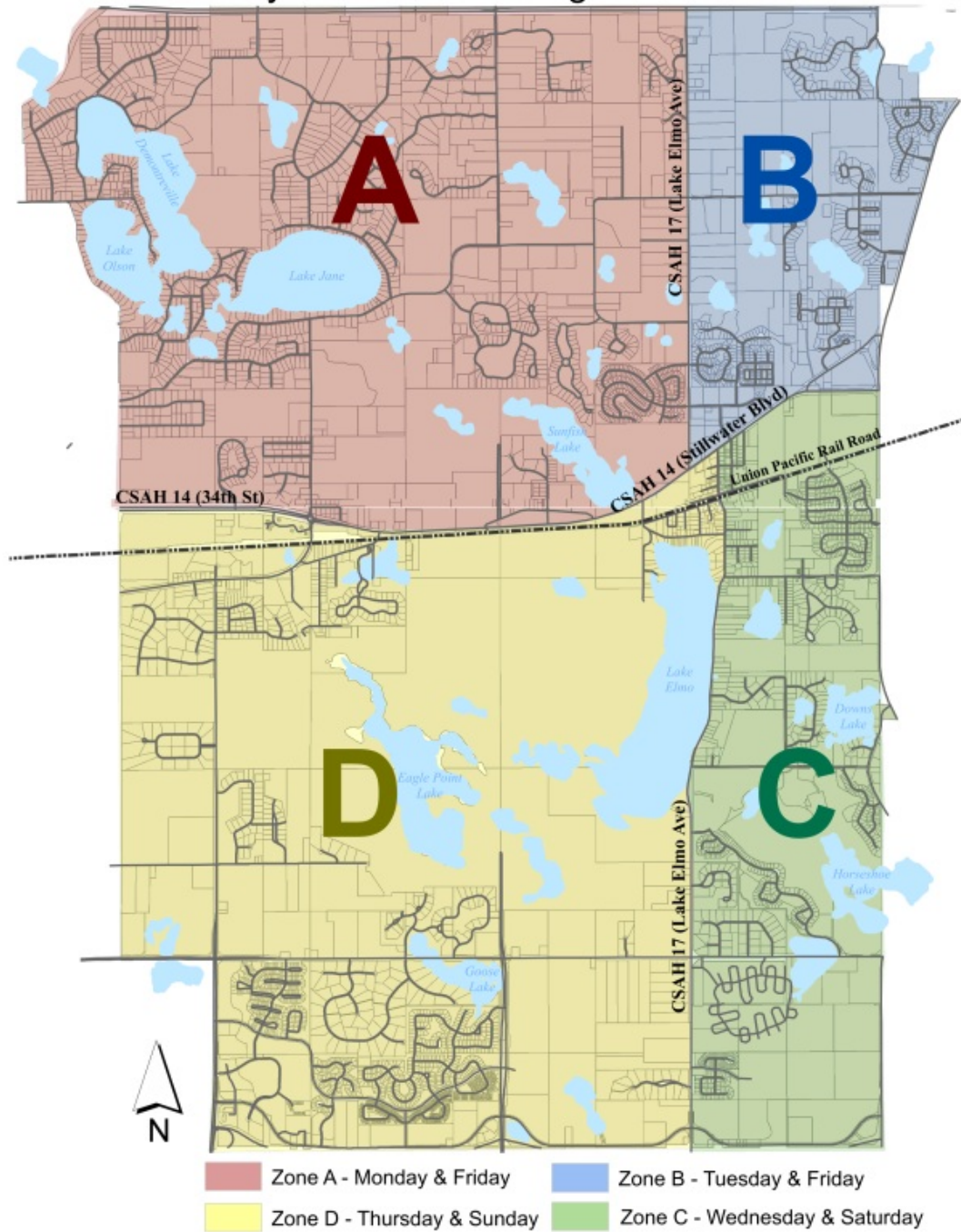
to the city water system to irrigate 2 days per week (according to the city irrigation zone map). Irrigation is restricted from the hours of 5am-5pm. Hand watering is allowed at any time and new sod waivers are available if needed.

You can further reduce your water usage by using a smart irrigation controller device. For more information on how to obtain a smart controller or more information on watering restrictions, please visit the city website. [Irrigation](#).

Irrigation enforcement has begun.

Thank you for doing your part to insure we all have sufficient drinking water and fire protection!

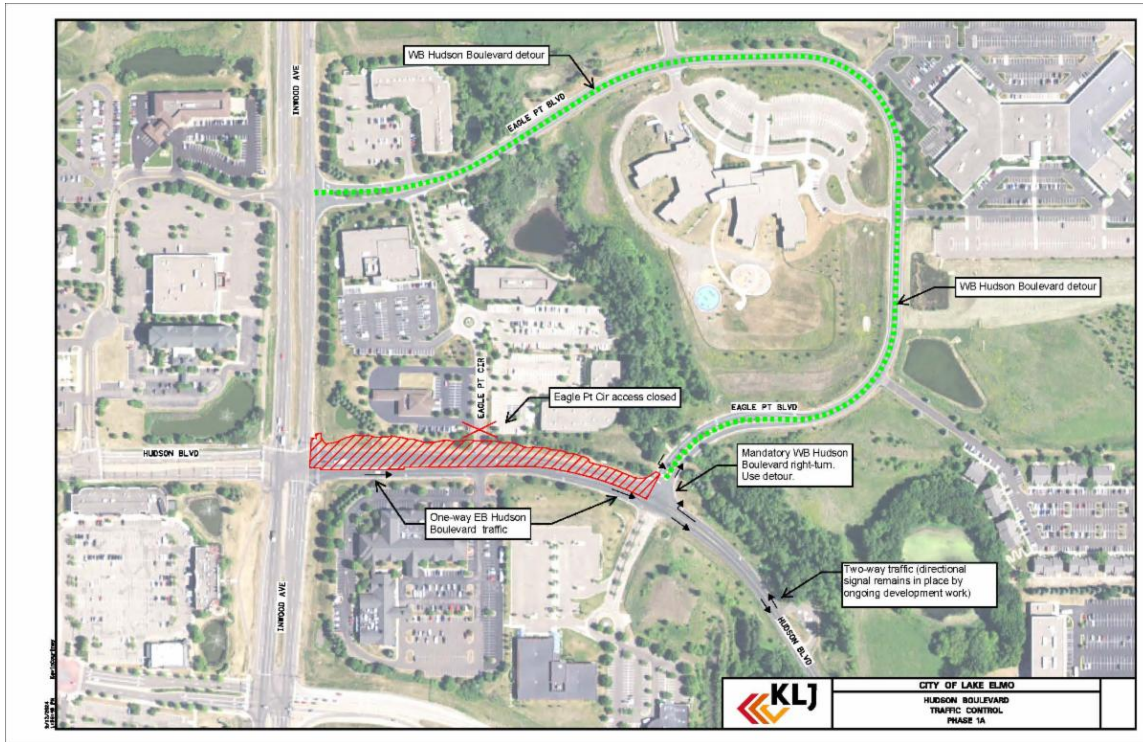
### City of Lake Elmo Irrigation Zones



### HUDSON BOULEVARD - TRAFFIC CHANGE

Starting Monday, September 16th Hudson Boulevard will be open to traffic

eastbound only between Inwood Avenue and Eagle Point Boulevard. Please see the detour in the exhibit below.



# CHLORINE

**Good for Swimming Pools and Spas**

**Bad for Lakes and Rivers**



*How to safely dispose of chlorinated water*

## Why should I be concerned?

Water from swimming pools and hot tubs (spas) often contains high levels of chlorine, bromine, and copper. It is also very corrosive due to low pH levels and may contain organic matter. If you discharge untreated pool or spa water into the street or local waters, you can kill fish and aquatic life.

**It is illegal to discharge chlorinated water to a municipal storm sewer system!**



## Can treated pool or spa water be discharged to the storm sewer system?

Yes, but only if the water has been dechlorinated (to less than 0.1 mg/L of chlorine), has a pH range of 7-8, consists only of water, and is discharged in a way that does not cause nuisance conditions or erosion problems.



## How can I get rid of chlorine?

Stop adding chlorine and leave the water exposed to the air for three to five days. The water will become naturally dechlorinated.

You can also use de-chlorinating chemicals from a pool or spa supplier to remove the chlorine more quickly. Chlorine and pH test kits are available to test levels in water.



## Can I discharge my pool or spa water into my yard?

Yes, but only if tests show that the water is de-chlorinated (to less than 0.1 mg/L of chlorine) has a pH of 7-8, and is free of other debris.

The water should be directed onto a vegetated surface so that it soaks into the ground. The water should not flow onto any other person's property or create nuisance conditions such as erosion or ponding for a prolonged period.

## July 25th Safe Drinking Water Meeting Replay is Available

The City of Lake Elmo, along with the Minnesota Pollution Control Agency (MPCA) and Minnesota Department of Health (MDH) hosted an informational meeting regarding PFAS, safe drinking water and private wells on July 25, 2024, where presentations were given by MPCA, MDH and Lake Elmo's City Engineer



as well as a question and answer period for the participants. The presentation slides are available [here](#) as well as printed copies are available at City Hall. A recording of the meeting is available [here](#).

---

## Private Wells and PFAS



If you have questions about your private well water quality, please reach out to the MPCA.

- You can request your well be tested here: <https://webapp.pca.state.mn.us/gw-sampling-req/>
- PFAS well sampling FAQs: [PFAS Well Sampling Frequently Asked Questions \(state.mn.us\)](#)
- Water filtration FAQs: [PFAS Water Filtration Frequently Asked Questions \(state.mn.us\)](#)
- MDH website about PFAS filtration [PFAS and Home Treatment of Water - MN Dept. of Health \(state.mn.us\)](#)
- Private well sampling interactive map: [Private Well Sampling in the East Metro Area \(arcgis.com\)](#)
- If you have questions about private well testing in the East Metro, call 651-757-2903, or email [east\\_metro\\_pfas\\_private\\_well\\_sampling\\_inquiries.mpca@state.mn.us](mailto:east_metro_pfas_private_well_sampling_inquiries.mpca@state.mn.us)
- Information about PFAS from the department of health can be found [Per- and Polyfluoroalkyl Substances \(PFAS\) - MN Dept. of Health \(state.mn.us\)](#)
- MPCA blueprint for Minnesota and PFAS. [Minnesota's PFAS Blueprint | Minnesota Pollution Control Agency \(state.mn.us\)](#)
- Good information to reduce your exposure to PFAS can be found Reducing Exposures: [Per- and Polyfluoroalkyl substances \(PFAS\)-MN Dept. of Health](#) and [PFAS - SixClasses.org](#)



Please visit the City of Lake Elmo's water resources webpage to learn more at [lakeelmo.gov/residents/index.php](https://lakeelmo.gov/residents/index.php)

If you know someone who has concerns about their water, please forward this newsletter to them and encourage them to sign up for the FRESH [HERE](#)



## County Board approves grants for Lake Elmo Park Reserve improvements

The Washington County Board of Commissioners approved \$1.75 million in grant funding with the Metropolitan Council for the purchase and installation of a new play structure at Lake Elmo Park Reserve Aug. 20.

The play structure at Lake Elmo Park Reserve is over 25 years old. The 2023 legislature approved state bonds to be allocated to the regional park system through the Met Council. Funds from the Met Council will be used to replace the current play structure equipment, perform site work, make parking lot upgrades, and improve access. Site prep will begin in 2024, and construction will be completed in spring 2025.

The first grant is a Modernization Grant for \$700,000. Modernization Grant funds are meant to improve or replace aging infrastructure within the regional park system. The second is a Park Legacy Grant for \$1,053,680.96. The 2023 legislature approved funding for the Metropolitan Council to allocate state funds towards the regional park system.

**Our neighbors in Stillwater have started a Cadet Unit within the Stillwater Police Department. Please share with any youth ages 14-20 who may be interested in a career in law enforcement!**

# Join the Stillwater Police Cadet Program



Stillwater Police Department

## About the Police Cadet Program

Are you interested in a career in law enforcement and want to make a positive impact in your community? Join the Stillwater Police Department Cadet Unit!

This hands-on program provides an incredible opportunity to learn from experienced safety professionals, gaining the knowledge, skills and practical experiences necessary to succeed in law enforcement.

Don't miss out on this incredible opportunity to jump-start your future and make a difference in your community. Sign up for the Stillwater Police Department Cadet Unit today.



Meetings will occur every other Sunday starting September 15, 2024 to April 27, 2025 | 4:00 PM to 8:00 PM



Stillwater Police Department  
216 4th St N  
Stillwater, MN 55082

## Qualifications

- Age 14-20
- Enrolled in school or have a high school diploma or equivalent
- Good moral character
- No prior arrests/convictions
- Must pass a background check
- Good physical health

## How to Apply

- Email Officer Johnson [Cjohnson@stillwatermn.gov](mailto:Cjohnson@stillwatermn.gov) to request 'Cadet Program Forms'
- Complete required forms
- Pass a background check

Applicants will be notified once background check is returned

## Questions?

Officer Johnson

- [Cjohnson@stillwatermn.gov](mailto:Cjohnson@stillwatermn.gov)
- 651-351-4905



[www.stillwatermn.gov](http://www.stillwatermn.gov)

**m** DEPARTMENT OF  
TRANSPORTATION

ROAD  
CLOSED

## Metro - I-94 Oakdale to St. Croix: 2022-2024 construction

Traffic impacts

I-94 Oakdale to Lakeland project area map: [View full-size map](#)

All traffic impacts are tentative and weather-dependent.

## Current

### Lane closures

5 a.m. Thu, Sept. 19 through late October

- EB I-94 is reduced to three lanes between Century Ave. and Woodbury Dr.
  - Traffic going east past the Woodbury Dr./Keats Ave. N. exit should use the left two lanes
  - Traffic exiting onto I-494, I-694, Radio Dr./Inwood Ave. N. or Woodbury Dr./Keats Ave. N. should use the right lane

Through late October

- WB I-94 is reduced to two lanes between Woodbury Dr. and Century Ave.

### Ramp closures

7 p.m. Wed, Sept. 18 through mid-October

- The ramp from NB I-494 to EB I-94 is closed
  - Detour: NB I-494/I-694, 10th St. N., SB I-694 and EB I-94
- The ramp from EB I-94 to SB I-494 is closed
  - Detour: EB I-94, NB I-694, 10th St. N. and SB I-694/I-494

7 p.m. Wed, Sept. 18 through 5 a.m. Sat, Sept. 21

- The EB I-94 ramps to/from Radio Dr./Inwood Ave. N. are closed
- The EB I-94 ramps to/from Woodbury Dr./Keats Ave. N. are closed

Through Fri, Sept. 20

- The ramp from Tamarack Rd. to SB I-494 is closed
  - Detour: [Tamarack Rd., Weir Dr., Valley Creek Rd. and SB I-494 \(PNG\)](#)
- The ramp from NB I-494 to Tamarack Rd. is closed
  - Detour: [Valley Creek Rd., Bielenberg Dr. and Tamarack Rd. \(PNG\)](#)

Through October

- The ramp from 10th St. N. to NB I-694 is closed
  - Detour: [10th St. N., Inwood Ave. N., Stillwater Blvd., Ideal Ave. N., 34th St. N. and NB I-694 \(PNG\)](#)
- The ramp from Century Ave. to EB I-94 is closed
  - Detour: [Century Ave., Hudson Rd., McKnight Rd., Burns Ave. and EB I-94 \(PNG\)](#)

## Upcoming

Information about upcoming traffic impacts will be posted as details become available.

## More about this project

We will be resurfacing the pavement and making other improvements to I-94 between Hwy 120/Century Ave. and the St. Croix River through fall 2024. The work will improve safety, traffic flow and ride smoothness.

For more information, including construction schedule and upcoming traffic impacts, visit the [I-94 Oakdale to St. Croix project webpage](#). If you have questions, please [contact the project team](#).

---



### Halloween Costume Swap

Date: Wednesday, October 2

Time: 4 – 6 p.m.

Location: South Environmental Center [4039 Cottage Grove Drive, Woodbury, MN 55129.](#)

Stop by to shop for free, gently-used costumes.

- Donations are not required to get a costume.
- Limit one costume per child.
- Remaining costumes will be donated.
- Child does not need to be present.

### Other information

- For questions, contact Washington County Public Health and Environment at 651-275-7475.
- For details on donating costumes, [click here.](#)

---

### Pilot Park Sand Volleyball Court is Complete

Construction of a new sand volleyball court in Pilot Park is complete! Pilot Park, located within walking distance of downtown in Easton Village currently has a soccer field and playground. Completion of the sand volleyball court adds to the availability for playing this growing sport in our area.





## Pebble Park Upgrades are Underway!

Out with the old! The Public works department had begun removal of the old playground set at Pebble Park. Construction of a new playground set will begin in September, which will consist of a new tower structure and slides. Over the next several weeks PW staff will be preparing the site for construction. Please stay clear of the site during construction.



The Public Works Department has begun preparing Demontreville Park for a new playground set. Removal of the 34 year old playset is complete. Visitors can expect some construction of the area over the next few weeks to prepare the new location. The new playground is expected to arrive in October 2024.



The sand volleyball court is finished at Carriage Station Park. Public Works staff put finishing touches on the project this week.

This court adds to the recently added sand court in Pilot Park and the original courts in Lions Park.

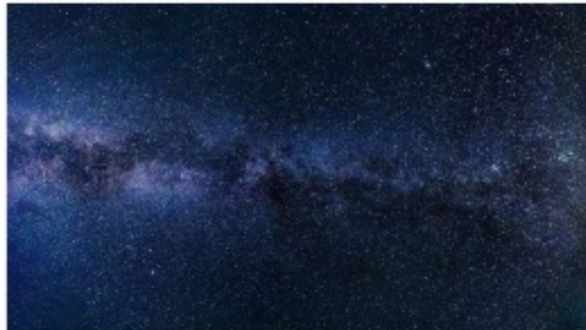
The Sally Manzara Interpretive Nature Center is open every day  
Visit <https://sminc-lake-elmo.org/> for details.



The Sally Manzara Interpretive Nature Center in Lake Elmo's Sunfish Lake Park is operated by a non-profit organization for the benefit of the entire community. We offer programs and events for people of all ages and have "adopted" the Park in the City's program. This work is all funded by donations. Thank you for your support!

Here are some things happening at the SMINC:

- Our Annual Buckthorn Removal Festival is coming up! Join us at Sunfish Lake Park on Saturday, October 26. We'll have food and beverages and, of course, we'll be clearing lots of buckthorn. There's lots to do to get rid of all the buckthorn in the park and replace it with native trees. We'll be starting at 9 a.m. and we're grateful to anyone who wants to lend us a hand. We'll have experienced buckthorn busters on-hand to show you how to identify which plants need to be removed. We always have plenty of food for everyone, once the work is done. Individuals and families welcome, groups too (scouts: it's a great way to get your conservation hours in)! This event is free and open to the public. Hope to see you there!
- On Saturday, October 12, at 9:30, our incredibly talented volunteer, Christa Rittberg, will be leading a Fall Family Nature Exploration and Photo Hike. For nature lovers of all ages, Christa will have some great tips for taking nature photos that really pop. How many times has something beautiful outside caught your attention, but when you looked at the picture it was just...blah? Well, there are a few things you do to make sure that those pictures really pop next time. Christa has led this hike before, and the results from our hikers were breathtaking. This is a free event, all you need to bring is a phone or tablet—or camera if you have it, but no fancy equipment is necessary!
- Like to look at the beautiful night sky but not sure what the heck is up? Then join us on Saturday, October 19 at 6 p.m. for Stargazing Date Night. We are thrilled to have the Minnesota Astronomical Society join us for this event to teach us all about the cosmos. The cost of this event is \$15 per person.



# BUCKTHORN REMOVAL FESTIVAL AT SUNFISH LAKE PARK IN LAKE ELMO



**Saturday, October 26th  
9 a.m. to 1 p.m.**

**Fresh Air    Food    Exercise    No Buckthorn!**

Help us fix our buckthorn problem! Individuals, families and groups are welcome! Join us for our annual Removal Festival and give us a hand clearing this bothersome invasive from the park. We have all the tools you need to get to work clearing buckthorn, all you need to bring is your energy. Once you're done working, we'll have food and other refreshments waiting for you. Games for the kids, and all kinds of family fun!

10,000 Stillwater LN

Lake Elmo, MN

55047



Sally Manzara Interpretive Nature Center is operated by Friends of Lake Elmo's Sunfish Lake Park, a 501(c)(3) nonprofit.

**651-408-2838 | e-mail: [info@smlnc-lake-elmo.org](mailto:info@smlnc-lake-elmo.org) | [smlnc-lake-elmo.org](http://smlnc-lake-elmo.org)**

Sally Manzara Interpretive Nature Center  
Nature for Life Series

# Stargazing Date Night at Sunfish Lake Park

Like to look at the beautiful night sky but not sure what you are seeing? We are thrilled to have the **Minnesota Astronomical Society** come and teach us all about the cosmos. We will look for Saturn, the moon, double stars, and galaxies. Bring your partner! Bring a friend! Refreshments will be provided. Admission is \$15

Special thanks to the City of Lake Elmo for allowing us to hold our event in Sunfish Lake Park after hours.

Please note: We will be out on the prairie so dress warm!



**Saturday, October 19, 6:00 PM**  
**10,000 Stillwater Lane Lake Elmo, MN 55042**



Sally Manzara Interpretive Nature Center is operated by Friends of Lake Elmo's Sunfish Lake Park, a 501(c)(3) nonprofit.  
**651-408-2838 | e-mail: [info@sminc-lake-elmo.org](mailto:info@sminc-lake-elmo.org) | [sminc-lake-elmo.org](http://sminc-lake-elmo.org)**



# STORMWATER SMART LAWN CARE



When water from rain, snow, or sleet flows over the ground, it's called "stormwater." Stormwater can pick up debris, litter, fertilizer, and pesticides used for lawn care. And when that stormwater flows into street gutters, storm drains, and downstream, it can pollute rivers, lakes, and streams. Follow these simple pollution solutions to help keep local waterways clean and healthy!



## DON'T MOW TOO LOW

Only remove 1/3 of the grass blade height and leave clippings on lawn to allow nutrients to return to the soil—they act as a natural fertilizer!



## CAREFUL WITH CHEMICALS

Read the label when applying pesticides and fertilizers, use them sparingly, and avoid applying them to pavement. When there is rain in the forecast, any chemicals you apply can wash downstream.



## ONLY RAIN IN THE DRAIN

Don't rake, sweep, or hose debris down the storm drains. Leaves, yard clippings, and trash can clog storm pipes, causing floods and polluted waterways.



## CURB YOUR WATER WASTE

Direct sprinklers toward the lawn and away from pavement to save water and keep chemicals and debris out of storm drains. Check out [www.epa.gov/watersense](http://www.epa.gov/watersense) for more tips to save water!

Chemicals and other household hazardous waste don't belong in the recycling bin!



Bring these items to your local household hazardous waste facility.



City of Lake Elmo | 3880 Laverne Avenue North | Lake Elmo, MN 55042 US

[Unsubscribe](#) | [Update Profile](#) | [Constant Contact Data Notice](#)



Try email marketing for free today!