



fresh

Your Weekly Source for City News and Information

Public Meetings Next Week:

- None

Visit our website

Join us on Nextdoor



Full meeting packets and meeting minutes can be accessed here:
[Agendas and Minutes](#)

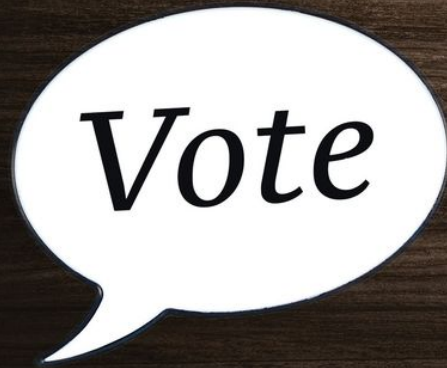
Early/Absentee Voting for the General Election Available Now

Voters may request a ballot be mailed to them at [SOS](#) or vote in person at four vote centers Monday-Friday from 8 a.m.-4:30 p.m. See the county's website for more information: [WashingtonCountyMN.gov/elections](https://www.washingtoncountymn.gov/elections).

The Early Vote Center locations are:

- Cottage Grove Service Center: 13000 Ravine Parkway, Cottage Grove.
- Forest Lake Headwaters Service Center: 19955 Forest Road N., Forest Lake.
- Washington County Government Center: 14949 62nd Street. N., Stillwater.
- Woodbury City Hall: 8301 Valley Creek Road, Woodbury.
- Oakdale City Hall, 1584 Hadley Avenue N., Oakdale.

General Election Early Voting September 20 through November 4



Washington
County
ELECTION
ADMINISTRATION

Bridgewater Bank Groundbreaking

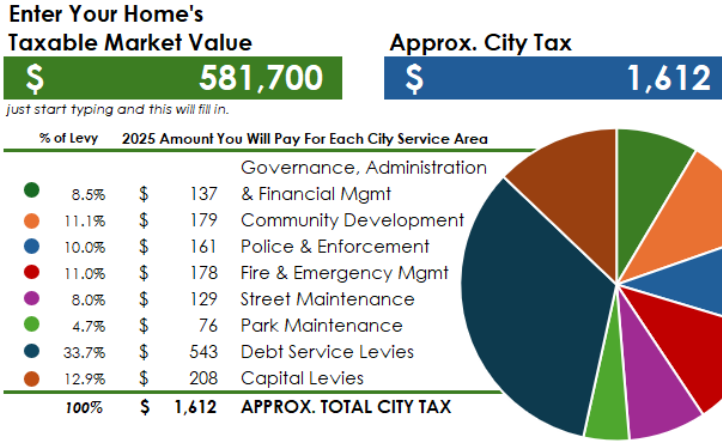
Bridgewater Bank broke ground this week on a new location in Lake Elmo near the intersection of Stillwater Way and Manning Avenue. Mayor Cadenhead, Councilmember Jeff Holtz and members of city staff were on hand to welcome Bridgewater to Lake Elmo.



What do my property taxes pay for?

[Property Tax Calculator](#)

The City Council adopted the 2025 Preliminary Levy on September 17. City Finance Dept. staff has developed a downloadable tool that estimates 2025 city taxes (not other jurisdictions) on your home and shows approximately how much of your taxes go toward each service area. Check it out at https://www.lakeelmo.gov/departments/finance_utility/property_tax_calculator.php



City Seeking Commission and Economic Development Authority Applicants

The City of Lake Elmo is currently accepting applications to serve on the Parks and Planning Commissions and the EDA. For more information and application form, please visit the city's website: [City Website](#)

We're Hiring Communications Coordinator

We are looking for an experienced individual who can share the story of our community!

www.lakeelmo.gov



Photo credit: Leo A Daly, Tom Grady Photography

Upcoming Road Closures

Union Pacific Railroad will be performing maintenance work on their rail line throughout Washington County in the coming weeks. Union Pacific crews will be replacing track railroad ties along their entire line. Some road/railroad crossing locations will get a new crossing surface, requiring a closure of the road at the railroad crossing.

The estimated dates and locations in and near Lake Elmo are:

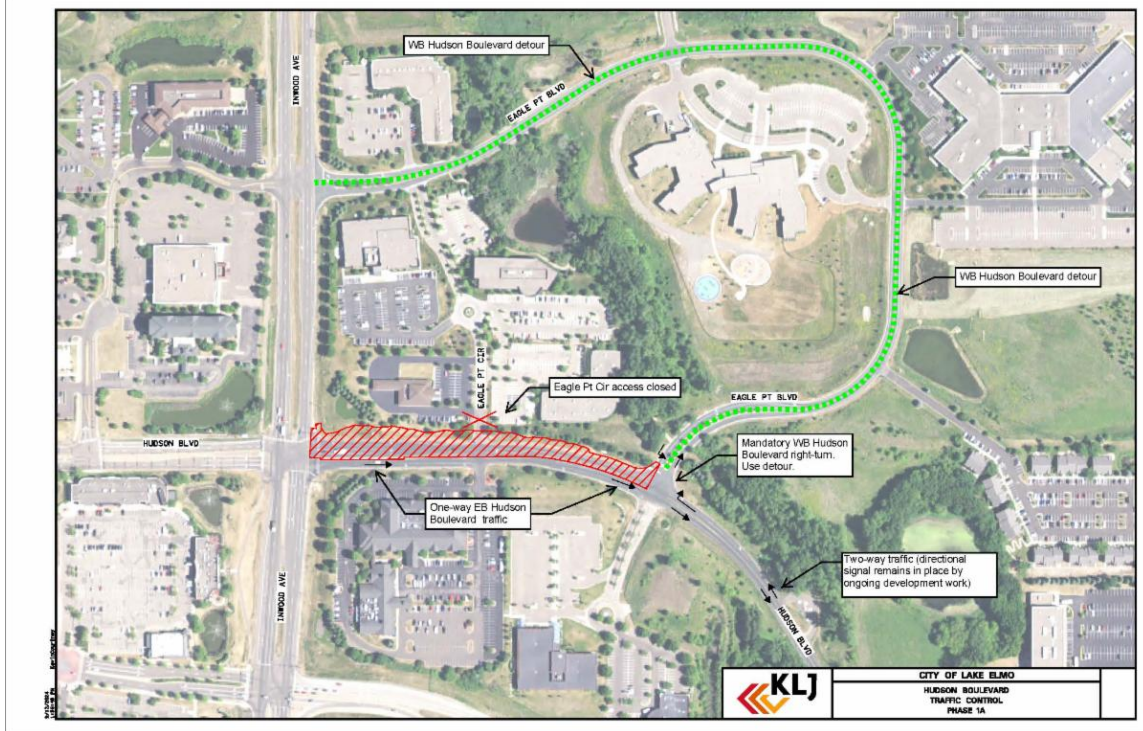
- o County Highway 15 (Manning Ave) will be closed from October 28 - 29, with the closure anticipated to start early Monday morning.
- o County Highway 14 (40th St) will be closed for an anticipated 1 to 2-day period between October 29 – November 4.
- o County Highway 17 (Lake Elmo Ave) will be closed for an anticipated 2-day period between October 29 - November 4.
- o County Highway 13 (Ideal Ave) will be closed for an anticipated 2-day period between October 29 - November 4.

Locations with bridges will be unaffected by this railroad work and will remain open at all times. This includes Interstate 694, County Highway 6 (Stillwater Blvd), and Highway 95 (St. Croix Trail). Detour map is included below.



HUDSON BOULEVARD - TRAFFIC CHANGE

Starting Monday, September 16th Hudson Boulevard will be open to traffic eastbound only between Inwood Avenue and Eagle Point Boulevard. Please see the detour in the exhibit below.



Metro - I-94 Oakdale to St. Croix: 2022-2024 construction

Traffic impacts

I-94 Oakdale to Lakeland project area map

[View full-size map](#)

All traffic impacts are tentative and weather-dependent.

Lane closures

Through 7 p.m. Wed, Oct. 30

- EB I-94 is reduced to three lanes between Century Ave. and Woodbury Dr.
 - Traffic going east past the Woodbury Dr./Keats Ave. N. exit should use the left two lanes
 - Traffic exiting onto I-494, I-694, Radio Dr./Inwood Ave. N. or Woodbury Dr./Keats Ave. N. should use the right lane
- WB I-94 is reduced to two lanes between Woodbury Dr. and Century Ave.

Ramp closures

5 a.m. Tue, Oct. 15 through Thu, Oct. 31

- The ramps to/from EB I-94 and Radio Dr./Inwood Ave. N. are closed
 - EB I-94 to Radio Dr./Inwood Ave. N. detour: EB I-94, Woodbury Dr.,

WB I-94 and Radio Dr./Inwood Ave. N. (PNG)

- SB Radio Dr./Inwood Ave. N. to EB I-94 detour:Radio Dr., Hudson Rd., Woodbury Dr. and EB I-94 (PNG)

5 a.m. Tue, Oct. 15 through mid-November

- The ramp from NB Radio Dr./Inwood Ave. N. to EB I-94 is closed

7 p.m. Wed, Sept. 18 through Mon, Oct. 28

- The ramp from NB I-494 to EB I-94 is closed
 - Detour: NB I-494/I-694, 10th St. N., SB I-694 and EB I-94 (PNG)
- The ramp from EB I-94 to SB I-494 is closed
 - Detour: EB I-94, NB I-694, 10th St. N. and SB I-694/I-494 (PNG)

Through Wed, Oct. 30

- The ramp from Century Ave. to EB I-94 is closed
 - Detour: Century Ave., Hudson Rd., McKnight Rd., Burns Ave. and EB I-94 (PNG)

Through mid-November

- The ramp from 10th St. N. to NB I-694 is closed
 - Detour: 10th St. N., Inwood Ave. N., Stillwater Blvd., Ideal Ave. N., 34th St. N. and NB I-694 (PNG)

Upcoming

Lane closures

7 p.m. Wed, Oct. 30 through 5 a.m. Thu, Oct. 31

- EB I-94 is reduced to one lane between Century Ave. and Woodbury Dr.

5 a.m. Thu, Oct. 31 through mid-November

- I-94 is reduced to two lanes in both directions between Century Ave. and Woodbury Dr.

Ramp closures

5 a.m. Thu, Oct. 31 through Sat, Nov. 9

- The ramp from WB I-94 to SB I-494 is closed
 - Detour: WB I-94, NB I-694, 10th St. N. and SB I-694/I-494 (PNG)
- The ramp from NB I-694 to WB I-94 is closed
 - Detour: NB I-694, 10th St. N., SB I-694 and WB I-94 (PNG)

Traffic stops

Mon, Oct. 28 through Wed, Oct. 30; 1:30-5 a.m. nightly

- EB I-94 traffic will be stopped intermittently for 10-15 minutes at a time between Century Ave. and Woodbury Dr.

Attention – NEW Utility Billing Payment Portal

We have moved to an intuitive new Utility Billing Portal called Paya.

Grab your City of Lake Elmo utility account number and proceed to Paya at the link below to register, manage your account, set up autopay, or make payments.

LakeElmo.PayaCP.com

If Autopay isn't for you, try out the new Text-and-Pay option.

If you need assistance, reach out to us at RNess@LakeElmo.gov or call 651-747-



Payment Portal

Make a Payment, enroll in Auto-Pay & e-Billing, view your payment and bill history, and more!

[Go to Payment Portal](#)



One-Time Payment

No time to login? Make a quick, one-time payment here.

[One-Time Payment](#)



Safe Drinking Water Meeting Replay is Available

The City of Lake Elmo, along with the Minnesota Pollution Control Agency (MPCA) and Minnesota Department of Health (MDH) hosted an informational meeting regarding PFAS, safe drinking water and private wells on July 25, 2024, where presentations were given by MPCA, MDH and Lake Elmo's City Engineer as well as a question and answer period for the participants. The presentation slides are available [here](#) as well as printed copies are available at City Hall. A recording of the meeting is available [here](#).

Private Wells and PFAS



If you have questions about your private well water quality, please reach out to the MPCA.

- You can request your well be tested here: <https://webapp.pca.state.mn.us/gw-sampling-req/>
- PFAS well sampling FAQs: [PFAS Well Sampling Frequently Asked Questions \(state.mn.us\)](#)
- Water filtration FAQs: [PFAS Water Filtration Frequently Asked Questions \(state.mn.us\)](#)
- MDH website about PFAS filtration [PFAS and Home Treatment of Water - MN Dept. of Health \(state.mn.us\)](#)
- Private well sampling interactive map: [Private Well Sampling in the East Metro Area](#)

arccgis.com)

- If you have questions about private well testing in the East Metro, call 651-757-2903, or email east_metro_pfas_private_well_sampling_inquiries.mpca@state.mn.us
- Information about PFAS from the department of health can be found [Per- and Polyfluoroalkyl Substances \(PFAS\) - MN Dept. of Health \(state.mn.us\)](http://Per-and-Polyfluoroalkyl-Substances-(PFAS)-MN-Dept.-of-Health.state.mn.us)
- MPCA blueprint for Minnesota and PFAS. [Minnesota's PFAS Blueprint | Minnesota Pollution Control Agency \(state.mn.us\)](http://Minnesota's-PFAS-Blueprint-Minnesota-Pollution-Control-Agency.state.mn.us)
- Good information to reduce your exposure to PFAS can be found Reducing Exposures: [Per- and Polyfluoroalkyl substances \(PFAS\)-MN Dept. of Health](http://Per-and-Polyfluoroalkyl-substances-(PFAS)-MN-Dept.-of-Health) and [PFAS - SixClasses.org](http://PFAS-SixClasses.org)

Please visit the City of Lake Elmo's water resources webpage to learn more at lakeelmo.gov/residents/index.php

If you know someone who has concerns about their water, please forward this newsletter to them and encourage them to sign up for the FRESH [HERE](#)



Community Thread Offers Yard-Raking Assistance to Older Adults, Seeks Volunteers

Community Thread will host its annual Rake a Difference Days on Saturday, October 26, Friday, November 1, and Saturday, November 2. Through this service event, volunteer groups are matched to adults age 55+ and adults with disabilities who need yard raking assistance in Washington County.

Last year, Community Thread organized 225 volunteers to rake yards for 39 older adults and adults with disabilities throughout Washington County. Volunteer groups typically include families, scout troops, service clubs, school groups, and businesses. A total of 298 bags of leaves were raked.

"This was our first-year volunteering with Rake a Difference Day," shared one volunteer. "We had so much fun, and the kids really felt like they were making a difference. What a cool experience!"

If you are interested in volunteering for Rake a Difference Day, visit our website at www.CommunityThreadMN.org or call 651-439-7434 to learn more.

For 57 years, Community Thread has been connecting people, neighborhoods, and lives together to strengthen the community. The nonprofit's mission is to maximize resources and engage volunteers to improve the quality of life for adults and families in our community.



You are invited to be a part of **LIGHT UP LAKE ELMO** this year!

We are excited to share this year's sponsorship package with you! Attached you will find the 2024 Light Up Lake Elmo Sponsorship flyer that outlines sponsor benefits of each level.

Last year we had a turnout of roughly 500 people and we anticipate more this year! Your support will help us sustain and elevate this holiday community event. Please review the opportunities and consider a sponsorship level in whatever capacity feels right to you.

THANK YOU!

**Please write checks
out to:**

Connect Lake Elmo

**Please mail checks
to:**

Zignego Agency
Insurance
Attn: Josh Zignego
8975 33rd Street N
Lake Elmo, MN 55042



www.connectlakeelmo.org



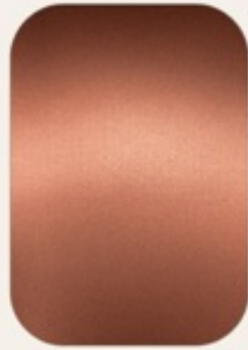
connectlakeelmo@gmail.com



LIGHT UP LAKE ELMO

2024 SPONSORSHIP LEVELS

DECEMBER 7TH 3-5PM

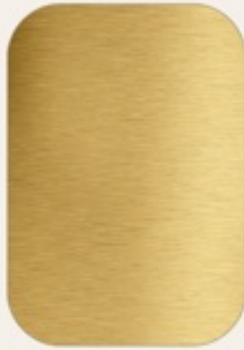


BRONZE

Logo on main event flyer

Logo and link to your business on our website

\$ 50



GOLD

Logo on main event flyer

Logo and link to your business on our website

Individual social media post with logo

\$ 100



PLATINUM

Logo on main event flyer

Logo and link to your business on our website

Individual social media post with logo

Logo on banner day of event

\$ 250



www.connectlakeelmo.org

connectlakeelmo@gmail.com

What would our cities look like if kids were in charge?

The Mayor for a Day Essay Contest is back to find out!

To enter, fourth, fifth, and sixth graders can answer the prompt, "What would you do if you were mayor for a day?" for a chance to win \$100 and recognition in Minnesota Cities magazine.

The deadline for submissions is Dec. 12. Students and parents/guardians can submit essays via an online form, a PDF email attachment, or through the mail. Details can be found here: [LMC](#)



Gardening classes



Got Buckthorn?

Oct. 14, 6:30-7:30 pm, online

Native Plant Seeds: Harvest, clean & store

Oct. 19, 10:30-11:30 am, Wildwood Library, Mahtomedi

Oct. 22, 6:30-7:30 pm, Stillwater Public Library

Water bath canning 101

Oct. 28, 6-7:30 pm, Bayport Library

Home Landscape Design

Nov. 14 & 21, 6:30-8pm, East Ridge High School

Registration details: washingtoncountymg.org

More classes on our website. Hosted by UM Extension Washington County Master Gardener Volunteer Program. Some classes may have a small fee.



WASHINGTON COUNTY MASTER GARDENER VOLUNTEER PROGRAM



RAMSEY COUNTY

Washington
County

FoodScrapsPickup.com
651-661-9393

Food Scraps Pickup Program now available in Lake Elmo

Ramsey and Washington counties' Food Scraps Pickup Program, a new way for residents to recycle food scraps from home, is now available in 19 new communities in Washington County, including Lake Elmo.

Twenty percent of trash in Ramsey and Washington counties is food scraps, such as fruit and vegetable peels, eggshells and bones.

This program offers an easy, accessible and environmentally friendly way for residents to manage food scraps at home. The program will roll out over multiple years and eventually be available to all residents of Ramsey and Washington counties.

Residents interested in participating in the program can sign up and place a bag order at no cost on the [Food Scraps Pickup Program website](http://FoodScrapsPickup.com) or by calling 651-661-9393. An annual supply of 6-gallon or 13-gallon food scrap bags will ship directly to participants' homes with an instruction guide on how to start collecting food scraps. Each week, or when a food scrap bag is full, residents will tie a knot at the top and then place the bag inside their trash cart or dumpster to be collected by their trash hauler. The program-provided food scrap bags are designed to be extra durable, so they don't tear open during the trip in the garbage truck.

After collection, food scrap bags and trash are hauled to the Ramsey/Washington Recycling & Energy Center (R&E Center), where the food scrap bags are sorted from the trash using robotic sorting technology and sent to an industrial compost facility to become compost. This program is making progress toward Minnesota's 75% recycling goal for metro counties and is a significant step forward in helping the counties reduce their climate impact.



Construction of the New Pebble Park Playground is underway. Installation of the new playground set will continue for another week before it is open to users.



The Public Works Department has begun preparing Demontreville Park for a new playground set. Removal of the 34 year old playset is complete. Visitors can expect some construction of the area over the next few weeks to prepare the new location. The new playground is expected to arrive in October 2024.



The Sally Manzara Interpretive Nature Center is open every day
Visit <https://sminc-lake-elmo.org/> for details.



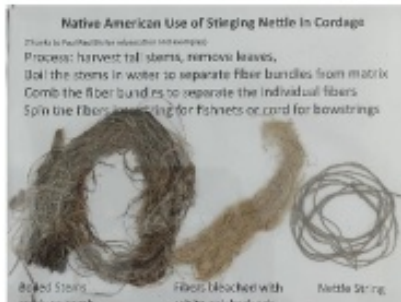
The Sally Manzara Interpretive Nature Center in Lake Elmo's Sunfish Lake Park is operated by a non-profit organization for the benefit of the entire community. We offer programs and events for people of all ages and have "adopted" the Park in the City's program. This work is all funded by donations. Thank you for your support!

Here are some things happening at the SMINC:

- Our Annual Buckthorn Removal Festival is this Saturday!! Join us at Sunfish Lake Park October 26. We'll have food and beverages and, of course, we'll be clearing lots of buckthorn. There's lots to do to get rid of all the buckthorn in the park and replace it with native trees. We'll be starting at 9 a.m. and we're grateful to anyone who wants to lend us a hand. We'll have experienced buckthorn busters on-hand to show you how to identify which plants need to be removed. We always have plenty of food for everyone, once the work is done. Individuals and families welcome, groups too (scouts: it's a great way to get your conservation hours in)! This event is free and open to the public. Hope to see you there!



- One our favorite exhibits--sometimes overlooked by visitors--describes the process of turning stinging nettles into cordage. Our friend Paul Red Elk, who put the exhibit together for us, along with Sarah Monkey, will be demonstrating the process this Saturday, October 26th, as part of our annual Buckthorn Removal Festival. Stop by Sunfish Lake Park between 9 a.m. and 1., check out the demonstration, help us clear some buckthorn, and have some lunch!



BUCKTHORN REMOVAL FESTIVAL AT SUNFISH LAKE PARK IN LAKE ELMO



**Saturday, October 26th
9 a.m. to 1 p.m.**

Fresh Air Food Exercise No Buckthorn!

Help us fix our buckthorn problem! Individuals, families and groups are welcome! Join us for our annual Removal Festival and give us a hand clearing this bothersome invasive from the park. We have all the tools you need to get to work clearing buckthorn, all you need to bring is your energy. Once you're done working, we'll have food and other refreshments waiting for you. Games for the kids, and all kinds of family fun!

10,000 Stillwater LN

Lake Elmo, MN

55047



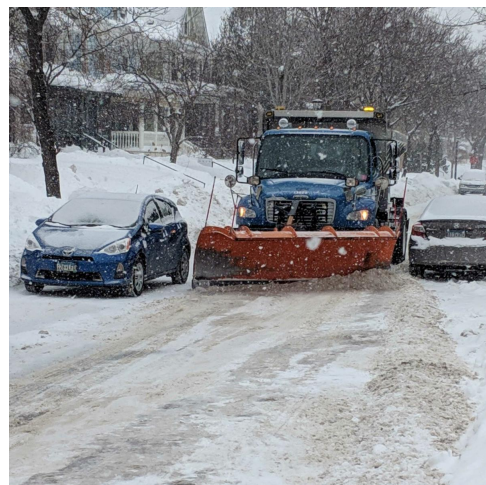
Sally Manzara Interpretive Nature Center is operated by Friends of Lake Elmo's Sunfish Lake Park, a 501(c)(3) nonprofit.

651-408-2838 | e-mail: info@smlnc-lake-elmo.org | smlnc-lake-elmo.org

Winter Parking

The winter parking ordinance prohibits parking on Lake Elmo streets from November 1 through March 31 between 2:00 AM and 7:00 AM, or during a snow event outside of those hours.

Remember, if the City's trucks are blocked they can't plow your streets!



Sign Guide

CODE SECTION 105.12.430

The Lake Elmo Community Development Department is happy to share our new Sign Guide, created to help local businesses and residents understand the sign regulations in our community. This guide offers information on the types of signs allowed, size requirements, placement, and more. Whether you are a business owner looking to advertise or a resident curious about neighborhood guidelines, this is a good resource for you. Check out the Lake Elmo Sign Guide ([linked here: Sign Guide](#)) to learn more.

Clean streets = Clean water

Rake and bag leaves along the curb and on top of stormdrain inlets

Chemicals and other household hazardous waste don't belong in the recycling bin! ❌

Bring these items to your local household hazardous waste facility. ✅

City of Lake Elmo | 3880 Laverne Avenue North | Lake Elmo, MN 55042 US

[Unsubscribe](#) | [Update Profile](#) | [Constant Contact Data Notice](#)



Try email marketing for free today!