



fresh

Your Weekly Source for City News and Information

Public Meetings Next Week:

- Canvassing Board Meeting Tuesday, November 12th, 6:15 p.m.
- City Council/Planning Commission Joint Workshop Tuesday, November 12th, 6:30 p.m.



Visit our website

Join us on Nextdoor



Full meeting packets and meeting minutes can be accessed here:
[Agendas and Minutes](#)



NOTICE OF SPECIAL MEETING

City Council Workshop
3880 Laverne Avenue North
November 12, 2024
6:15 PM

AGENDA

- I. Call to Order
 - II. Canvass Election Results -*Resolution 2024-118*
 - III. Adjourn
-



NOTICE OF MEETING

City Council Workshop
3880 Laverne Avenue North
November 12, 2024
6:30 PM

AGENDA

- | | |
|------------------------|---------|
| I. Call to Order | 6:30 PM |
| II. Cannabis Ordinance | 6:30 PM |
| III. Adjourn | 7:30 PM |
-

NOTICE OF MEETING

The City of Lake Elmo

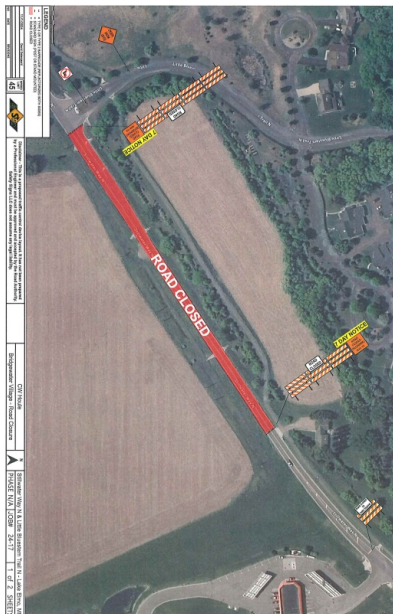
Planning Commission will conduct a meeting on

Wednesday November 13th 2024

at 6:30 p.m.

AGENDA

1. Pledge of Allegiance
2. Approve Agenda
3. Approve Minutes of October 28th, 2024
4. Public Hearing
 - a) **Royal Golf Conditional Use Permits and Variance.** Royal Golf LLC has submitted two conditional use permits and a variance application for the property located at 11441 20th St. The first conditional use permit is for the addition of pickleball courts to the site, the second conditional use permit is for a clubhouse expansion. The variance is required because the site is over the imperious surface maximum.
 - b) **Landscape Ordinance Zoning Text Amendments.** The City has initiated a zoning text amendment to Article VIII Environmental Performance Standards to correct dated language, update standards, and clarify planting/plan standards.
 - c) **Capital Improvements Plan.** To review and hear interested persons about the City's 2024 - 2034 Capital Improvement Program (CIP).
5. New/Unfinished Business
 - a) **2025 Planning Commission Work Plan.**
6. Communications/Updates
 - a) City Council Updates
 - i. Lake Elmo Elementary Subdivision, Variance, and Conditional Use Permit – 11/6/2024
 - ii. Cannabis Workshop Discussion – 11/12/2024
 - b) Upcoming Meetings
 - i. November 25th, 2024
 - ii. December 9th, 2024
7. Adjourn



Upcoming Road Closure

The Bridgewater project will require a full closure of Stillwater Way to install watermain starting Tuesday November 12th. Please refer to the detour plan on the left for an alternate route.

The closure will be in place for 2-3 days in order to complete the work efforts

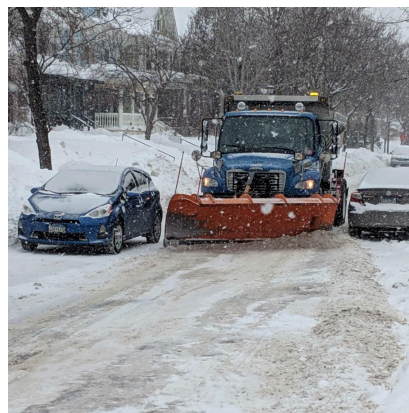


It is illegal to put yard, garden, or tree waste into the garbage. Washington County offers a free drop off site for residents and there are other private options available for a fee. More information can be found on the county's website linked here: [Yard Waste](#)

Winter Parking Ordinance

The winter parking ordinance prohibits parking on Lake Elmo streets from November 1 through March 31 between 2:00 AM and 7:00 AM, or during a snow event outside of those hours.

Remember, if the City's trucks are blocked they can't plow your streets!



What do my property taxes pay for?

Property Tax Calculator

The City Council adopted the 2025 Preliminary Levy on September 17. City Finance Dept. staff has developed a downloadable tool that estimates 2025 city taxes (not other jurisdictions) on your home and shows approximately how much of your taxes go toward each service area. Check it out at

https://www.lakeelmo.gov/departments/finance_utility/property_tax_calculator.php

Enter Your Home's

Taxable Market Value

\$ 581,700

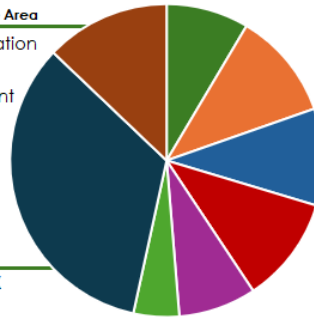
Approx. City Tax

\$ 1,612

just start typing and this will fill in.

% of Levy 2025 Amount You Will Pay For Each City Service Area

% of Levy	2025 Amount You Will Pay For Each City Service Area
8.5%	\$ 137 Governance, Administration & Financial Mgmt
11.1%	\$ 179 Community Development
10.0%	\$ 161 Police & Enforcement
11.0%	\$ 178 Fire & Emergency Mgmt
8.0%	\$ 129 Street Maintenance
4.7%	\$ 76 Park Maintenance
33.7%	\$ 543 Debt Service Levies
12.9%	\$ 208 Capital Levies
100%	\$ 1,612 APPROX. TOTAL CITY TAX



City Seeking Commission and Economic Development Authority Applicants

The City of Lake Elmo is currently accepting applications to serve on the Parks and Planning Commissions and the EDA. For more information and application form, please visit the city's website: [City Website](#)



Metro - I-94 Oakdale to St. Croix: 2022-2024 construction

Traffic impacts

I-94 Oakdale to Lakeland project area map

[View full-size map](#)

All traffic impacts are tentative and weather-dependent.

Lane closures

5 a.m. Sun, Nov. 3 through mid-November

- I-94 is reduced to two lanes in both directions between Century Ave. and Woodbury Dr.

Ramp closures

Through Sat, Nov. 9

- The ramp from NB Radio Dr./Inwood Ave. N. to EB I-94 is closed
 - Detour: Radio Dr., Hudson Rd., Woodbury Dr. and EB I-94

Through Wed, Nov. 13

- The ramp from 10th St. N. to NB I-694 is closed

- Detour: [10th St. N., Inwood Ave. N., Stillwater Blvd., Ideal Ave. N., 34th St. N. and NB I-694 \(PNG\)](#)

Upcoming

Information about upcoming traffic impacts will be posted as details become available.

Lane closures

7 p.m. Mon, Nov. 11 through 5 a.m. Tue, Nov. 12

- WB I-94 is reduced to one lane between Woodbury Dr./Keats Ave. N. and Century Ave.

Ramp closures

5 a.m. Mon, Nov. 11 through Wed, Nov. 13

- The ramp from Century Ave. to EB I-94 is closed
 - Detour: Century Ave., Hudson Rd., McKnight Rd., Burns Ave. and EB I-94

5 a.m. Mon, Nov. 11 through Fri, Nov. 15

- The ramp from WB I-94 to SB I-494 is closed
 - Detour: [WB I-94, NB I-694, 10th St. N. and SB I-694/I-494 \(PNG\)](#)
- The ramp from NB I-694 to WB I-94 is closed
 - Detour: [NB I-694, 10th St. N., SB I-694 and WB I-94 \(PNG\)](#)

Attention – NEW Utility Billing Payment Portal



We have moved to an intuitive new Utility Billing Portal called Paya.

Grab your City of Lake Elmo utility account number and proceed to Paya at the link below to register, manage your account, set up autopay, or make payments.

LakeElmo.PayaCP.com

If Autopay isn't for you, try out the new Text-and-Pay option.

If you need assistance, reach out to us at RNess@LakeElmo.gov or call 651-747-3906.

 <p>Payment Portal Make a Payment, enroll in Auto-Pay & e-Billing, view your payment and bill history, and more!</p> <p>Go to Payment Portal</p>	 <p>One-Time Payment No time to login? Make a quick, one-time payment here.</p> <p>One-Time Payment</p>
--	---

Safe Drinking Water Meeting Replay is Available

The City of Lake Elmo, along with the Minnesota Pollution Control Agency (MPCA) and Minnesota Department of Health (MDH) hosted an informational meeting regarding



PFAS, safe drinking water and private wells on July 25, 2024, where presentations were given by MPCA, MDH and Lake Elmo's City Engineer as well as a question and answer period for the participants. The presentation slides are available [here](#) as well as printed copies are available at City Hall. A recording of the meeting is available [here](#).

Private Wells and PFAS



If you have questions about your private well water quality, please reach out to the MPCA.

- You can request your well be tested here: <https://webapp.pca.state.mn.us/gw-sampling-req/>
- PFAS well sampling FAQs: [PFAS Well Sampling Frequently Asked Questions \(state.mn.us\)](#)
- Water filtration FAQs: [PFAS Water Filtration Frequently Asked Questions \(state.mn.us\)](#)
- MDH website about PFAS filtration [PFAS and Home Treatment of Water - MN Dept. of Health \(state.mn.us\)](#)
- Private well sampling interactive map: [Private Well Sampling in the East Metro Area \(arcgis.com\)](#)
- If you have questions about private well testing in the East Metro, call 651-757-2903, or email east_metro_pfas_private_well_sampling_inquiries.mpca@state.mn.us
- Information about PFAS from the department of health can be found [Per- and Polyfluoroalkyl Substances \(PFAS\) - MN Dept. of Health \(state.mn.us\)](#)
- MPCA blueprint for Minnesota and PFAS. [Minnesota's PFAS Blueprint | Minnesota Pollution Control Agency \(state.mn.us\)](#)
- Good information to reduce your exposure to PFAS can be found Reducing Exposures: [Per- and Polyfluoroalkyl substances \(PFAS\)-MN Dept. of Health](#) and [PFAS - SixClasses.org](#)

Please visit the City of Lake Elmo's water resources webpage to learn more at lakeelmo.gov/residents/index.php

If you know someone who has concerns about their water, please forward this newsletter to them and encourage them to sign up for the FRESH [HERE](#)



You are invited to be a part of **LIGHT UP LAKE ELMO this year!**

We are excited to share this year's sponsorship package with you! Attached you will find the 2024 Light Up Lake Elmo Sponsorship flyer that outlines sponsor benefits of each level.

Last year we had a turnout of roughly 500 people and we anticipate more this year! Your support will help us sustain and elevate this holiday community event. Please review the opportunities and consider a sponsorship level in whatever capacity feels right to you.

THANK YOU!

Please write checks
out to:

Connect Lake Elmo

Please mail checks
to:

Zignego Agency
Insurance
Attn: Josh Zignego
8975 33rd Street N
Lake Elmo, MN 55042



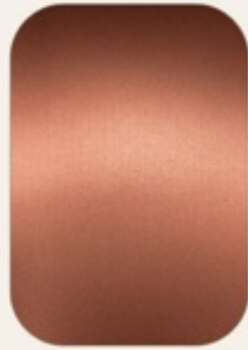
www.connectlakeelmo.org



connectlakeelmo@gmail.com



LIGHT UP LAKE ELMO
2024 SPONSORSHIP LEVELS
DECEMBER 7TH 3-5PM



BRONZE

Logo on main event flyer
 Logo and link to your business on our website

\$ 50



GOLD

Logo on main event flyer
 Logo and link to your business on our website
 Individual social media post with logo

\$ 100



PLATINUM

Logo on main event flyer
 Logo and link to your business on our website
 Individual social media post with logo
 Logo on banner day of event

\$ 250



www.connectlakeelmo.org

connectlakeelmo@gmail.com

What would our cities look like if kids were in charge?

The Mayor for a Day Essay Contest is back to find out!

To enter, fourth, fifth, and sixth graders can answer the prompt, "What would you do if you were mayor for a day?" for a chance to win \$100 and recognition in Minnesota Cities magazine.

The deadline for submissions is Dec. 12. Students and parents/guardians can submit essays via an online form, a PDF email attachment, or through the mail. Details can be found here: [LMC](#)



Food Scraps Pickup Program

now available in Lake Elmo



Food Scraps
PICKUP
Program™

Now available in
new communities!

RAMSEY COUNTY

Washington
County

FoodScrapsPickup.com
651-661-9393

Ramsey and Washington counties' Food Scraps Pickup Program, a new way for residents to recycle food scraps from home, is now available in 19 new communities in Washington County, including Lake Elmo.

Twenty percent of trash in Ramsey and Washington counties is food scraps, such as fruit and vegetable peels, eggshells and bones.

This program offers an easy, accessible and environmentally friendly way for residents to manage food scraps at home. The program will roll out over multiple years and eventually be available to all residents of Ramsey and Washington counties.

Residents interested in participating in the program can sign up and place a bag order at no cost on the [Food Scraps Pickup Program website](#) or by calling 651-661-9393. An annual supply of 6-gallon or 13-gallon food scrap bags will ship directly to participants' homes with an instruction guide on how to start collecting food scraps. Each week, or when a food scrap bag is full, residents will tie a knot at the top and then place the bag inside their trash cart or dumpster to be collected by their trash hauler. The program-provided food scrap bags are designed to be extra durable, so they don't tear open during the trip in the garbage truck.

After collection, food scrap bags and trash are hauled to the Ramsey/Washington Recycling & Energy Center (R&E Center), where the food scrap bags are sorted from the trash using robotic sorting technology and sent to an industrial compost facility to become compost. This program is making progress toward Minnesota's 75% recycling goal for metro counties and is a significant step forward in helping the counties reduce their climate impact.

The Sally Manzara Interpretive Nature Center is open every day
Visit <https://sminc-lake-elmo.org/> for details.



The Sally Manzara Interpretive Nature Center in Lake Elmo's Sunfish Lake Park is operated by a non-profit organization for the benefit of the entire community. We offer programs and events for people of all ages and have "adopted" the Park in the City's program. This work is all funded by donations. Thank you for your support!

Here are some things happening this month at the SMINC:

- Our monthly buckthorn removal day for November is Saturday, November 9th. Thanks to everyone who came out in October, for our monthly removal day, and for the Buckthorn Removal Festival! We made great strides, but the work continues. We'll be back at it next Saturday at 9:30. We have tools, and gloves, and fresh air. Every volunteer hour helps us get closer to our goal of a buckthorn free Sunfish Lake Park!



- Our next Toddler Tuesday is on November 12 from 10 to 11:30. For children ages 0 to 5 and their families, \$8 per person. The first hour will be exploring the theme of the day and the last 30 minutes will be a social hour, chatting with old and new friends and investigating all that the nature center has to share! This month's theme is "Turkey Time." To sign up, visit the calendar page on our website.



- Speaking of turkeys, we'll be decorating Thanksgiving cookies on Saturday, November 23rd, from 10 a.m. to noon at the center. This is a free event, and open to all. We'll have supplies, and you'll be able to take some cookies with you—if you don't eat them first!



Thanksgiving Cookie Decorating @ the SMINC

Fun for the whole family! Join us at the Sally Manzaera Interpretive Nature Center and decorate your own turkey-shaped cookies. We'll have the supplies, you can take home what you don't eat! This event is free and open to the public.

Saturday, November 23, 10 AM

10,000 Stillwater Lane Lake Elmo, MN 55042



Sally Manzaera Interpretive Nature Center is operated by Friends of Lake Elmo's Sunfish Lake Park, a 501(c)(3) nonprofit.
651-408-2838 | e-mail: info@sminc-lake-elmo.org | sminc-lake-elmo.org



3M Wizards: Air in Motion

We're welcoming back the always exciting, and often hilarious, 3M Wizards to the Sally Manzara Interpretive Nature Center. The Wizards never disappoint, and they're always ready to amaze us with the wonderful things that science can do. This presentation, "Air in Motion," will focus on that stuff that's all around us, that we rarely take notice of but that has so many amazing properties. Air! You'll no doubt learn a lot from this event—we always do! This even is free, open to the public, and fun for the whole family!

Saturday, November 16 @ 10:30 AM

10,000 Stillwater Lane Lake Elmo, MN 55042
sminc-lake-elmo.org

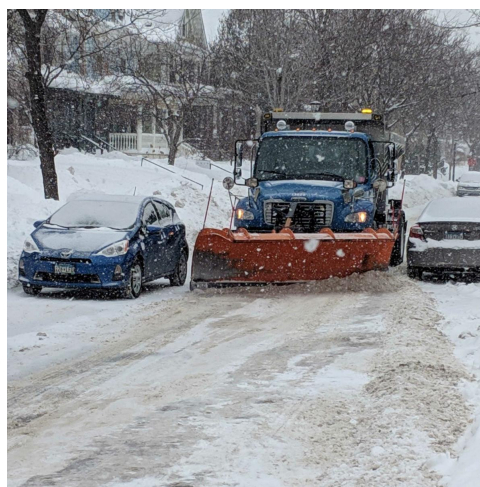


Sally Manzara Interpretive Nature Center is operated by Friends of Lake Elmo's Sunfish Lake Park, a 501(c)(3) nonprofit.
651-408-2838 | e-mail: info@sminc-lake-elmo.org | sminc-lake-elmo.org

Winter Parking

The winter parking ordinance prohibits parking on Lake Elmo streets from November 1 through March 31 between 2:00 AM and 7:00 AM, or during a snow event outside of those hours.

Remember, if the City's trucks are blocked they can't plow your streets!



Sign Guide

CODE SECTION 105.12.430

The Lake Elmo Community Development Department is happy to share our new Sign Guide, created to help local businesses and residents understand the sign regulations in our community. This guide offers information on the types of signs allowed, size requirements, placement, and more. Whether you are a business owner looking to advertise or a resident curious about neighborhood guidelines, this is a good resource for you. Check out the Lake Elmo Sign Guide ([linked here: Sign Guide](#)) to learn more.

Clean streets = Clean water

Rake and bag leaves along the curb and on top of stormdrain inlets

Chemicals and other household hazardous waste don't belong in the recycling bin! ❌

Bring these items to your local household hazardous waste facility. ✅

City of Lake Elmo | 3880 Laverne Avenue North | Lake Elmo, MN 55042 US

[Unsubscribe](#) | [Update Profile](#) | [Constant Contact Data Notice](#)



Try email marketing for free today!