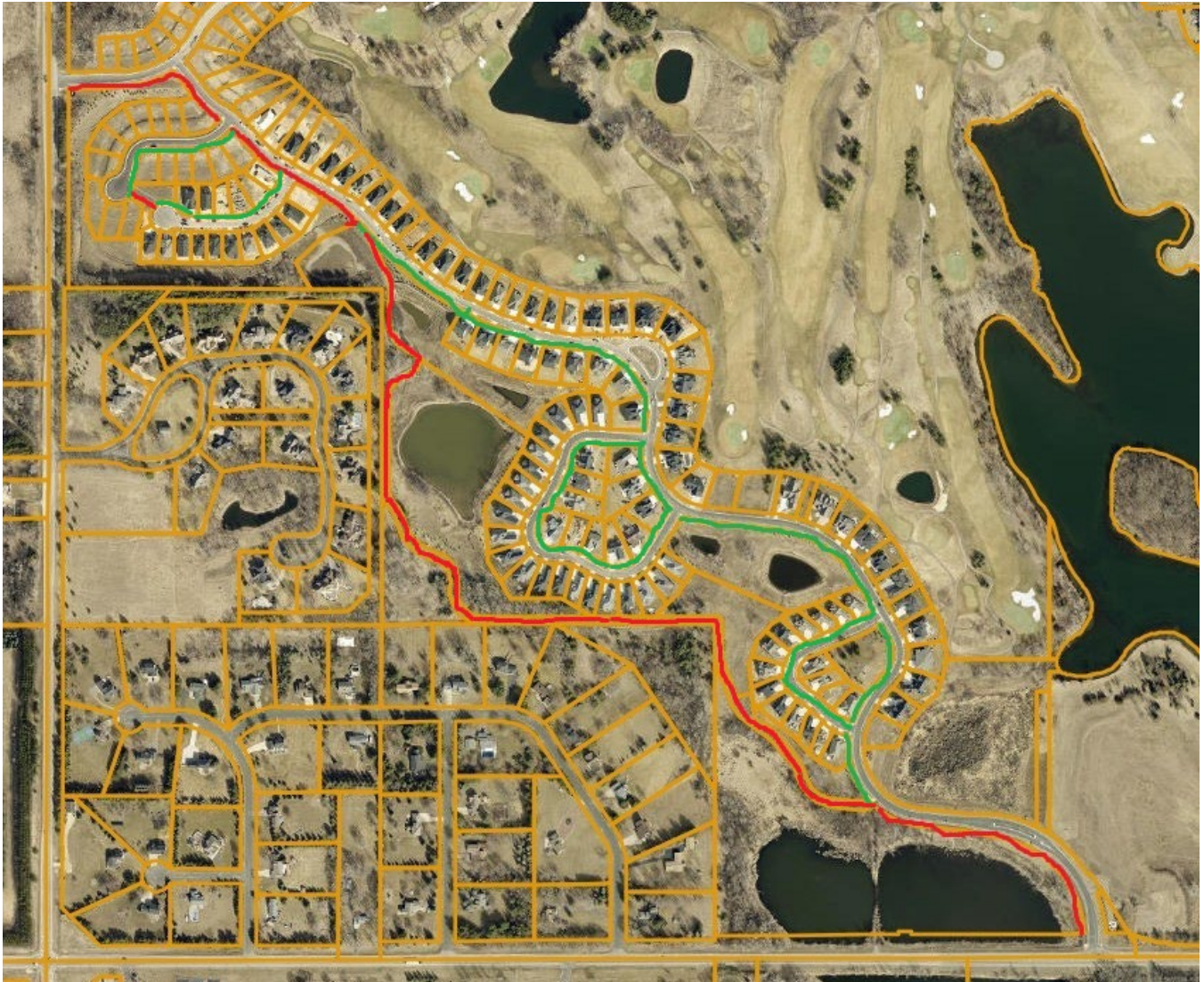


## Royal Club Development

Concrete Sidewalk



Bituminous Trail



### 103.00.140 Engineering Design Standards; Required Improvements

Submittals must meet plan sheet format requirements set forth by the city engineering design standards.

- (j) General improvements. The following shall be installed in accordance with the city engineering design standards manual and all other applicable city standards:
  - (1) Trees and boulevard sodding.
  - (2) Streets signs shall be installed at each intersection.
  - (3) Driveway approaches, sidewalks, or pedestrian pathways.
  - (4) Street lighting fixtures.

- (5) Sidewalks are required on one side of all streets. The council may require sidewalks along both sides of all streets in areas where the residential density equals or exceeds three dwelling units per net acre of land or in any commercial, industrial, or other business areas if the council determines that sidewalks are required for public safety.

**ENGINEERING DESIGN AND  
CONSTRUCTION STANDARDS MANUAL  
FOR PUBLIC IMPROVEMENTS AND  
PRIVATE DEVELOPMENTS**

- Sidewalks
  - Collector street.....Required on both sides
  - -Local Residential Street.....Required on one side
  - -Cul-de-sac Street.....Required for trail connection
  - Width (when on one side of the street).....6-feet
  - Width (when on both sides of the street).....5-feet
  - Sidewalk Maximum Longitudinal Grade.....6%
  - Pavement Section.....5-inch Concrete, 5-inch Class 6

Platt approved with bituminous trails as constructed.