

**CITY OF LAKE ELMO, MINNESOTA**

**RESOLUTION NO. 2008-052  
Sponsoring the Safe Routes to School Grant  
For Lake Elmo Elementary School**

WHEREAS, the Lake Elmo Elementary School is located in Lake Elmo, Minnesota at the intersection of State Highway 5 and County Road 17; and

WHEREAS, the city of Lake Elmo, Washington County, the Minnesota Department of Transportation and the Stillwater School District have been working together to improve pedestrian and bicycle safety in the vicinity of Lake Elmo Elementary School; and

WHEREAS, the city of Lake Elmo sponsored the first Safe Routes to School Grant for the Lake Elmo Elementary School PTA and participated in the planning process; and

WHEREAS, the result of the Safe Routes to School planning process resulted in a recommendation to make short term (\$139,000) and long term physical improvements (\$822,000) to the area to improve pedestrian and bicycle safety; and


WHEREAS, the short term improvements are a priority for the school, city, county and state.

NOW THEREFORE BE IT RESOLVED, that the city of Lake Elmo sponsor the second Safe Routes to School Grant.

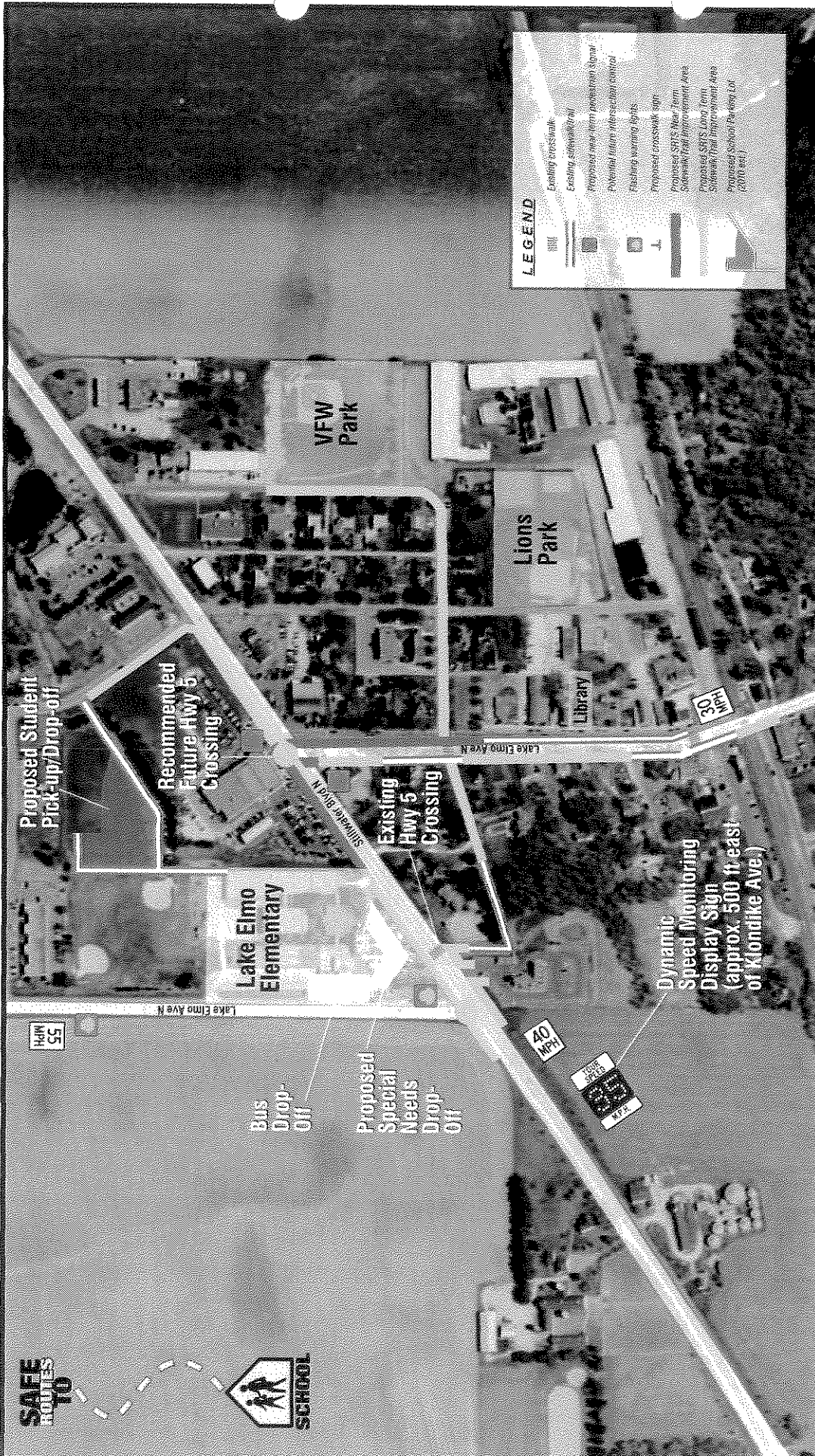
ADOPTED BY THE Lake Elmo City Council on November 18, 2008.

  
\_\_\_\_\_  
Dean A. Johnston, Mayor

ATTEST:

  
\_\_\_\_\_  
Susan Hoyt, City Administrator

**SAFE ROUTES TO SCHOOL**



**LEGEND**

|          |   |
|----------|---|
| [Symbol] | Existing crosswalk                                      |
| [Symbol] | Proposed near-term pedestrian signal                    |
| [Symbol] | Potential future intersection control                   |
| [Symbol] | Flashing warning lights                                 |
| [Symbol] | Proposed crosswalk sign                                 |
| [Symbol] | Proposed SRTS Near Term Sidewalk Trail Improvement Area |
| [Symbol] | Proposed SRTS Long Term Sidewalk Trail Improvement Area |
| [Symbol] | Proposed School Parking Lot (2016 est.)                 |

**ITERIS**  
PROVIDING THE SOLUTIONS  
**3M**  
**PE Services**

**Notes:**  
 1. Crossing recommendations based on installation of controlled intersections  
 2. Map is not to scale.

**Lake Elmo School**  
**Lake Elmo Elementary School**  
**Safe Routes to School Project**