

CITY OF LAKE ELMO
WASHINGTON COUNTY
STATE OF MINNESOTA

ORDINANCE NO. 97-179

AN ORDINANCE RELATING TO TOWING OF ILLEGALLY
PARKED VEHICLES AND TRAILERS

The Lake Elmo City Council hereby ordains that Sections 100.06 Subd. 1 and Subd. 2 and Section 1000.01 are amended; and that Section 100.06 Subd. 5, Section 1005.01 Subd. 3 and 1005.045 and its subdivisions are hereby added to the City Code to read as follows:

100.06 Subd. 1 Petty Misdemeanor. Whenever an action or omission is declared by this Code to be a petty misdemeanor, any person violating the provision shall, upon conviction, be subject to a fine not more than \$300.00, plus the cost of prosecution

Subd. 2 Misdemeanors. Unless another penalty is expressly provided in this Code, any person violating any provision of this Code, or any rule or regulation adopted in pursuance thereof or any other provision of any code adopted in this Code by reference, including any provisions declaring an act or omission to be a misdemeanor shall, upon conviction, be subject to a fine of not more than \$1,000.00 or imprisonment for a term not to exceed ninety (90) days, or both, plus, in either case, the cost of prosecution.

100.06 Subd. 5 Miscellaneous Fines. Any person who violates the provisions of Section 1005.045 shall, upon conviction, be subject to a fine of not less than \$150.00 nor more than \$300.00, plus the cost of prosecution.

1000.01 Adoption of Highway Traffic Regulations. The regulatory provisions and definitions of MS Chapter 169, the Highway Traffic Regulation Act, and of MS Chapter 168B are, by this Section, adopted as the traffic code and parking regulations for the use of highways, streets, alleys and other portions of the City and are, by this Section, incorporated in and made a part of this Code. The parking provisions shall apply to the parking of trailers as well as vehicles.

1005.01 Subd. 3 Trailers. The provisions of Section 1005 and its subdivisions shall apply to the parking of trailers as well as vehicles.

1005.045 Parking of Trailers. No trailer shall be parked in the following "No Trailer Parking" zones unless a temporary parking permit has been issued by the City Administrator as provided in Section 1005.05

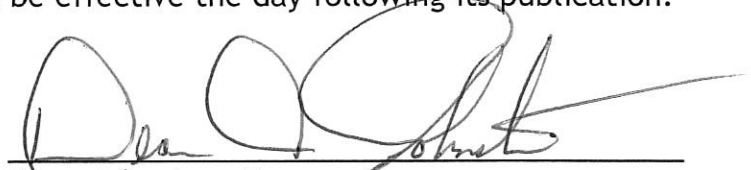
- (a) Lake DeMontreville Public Access:
1. 53rd Street from DeMontreville Trail to the west of the street.
 2. DeMontreville Trail from 50th Street to DeMontreville Circle.
 3. Highlands Trail from Hilltop Avenue to DeMontreville Trail; and from DeMontreville Trail to Highland Trail Court.
 4. Hytrail from Highlands Trail to 59th Street
 5. 50th Street From Hilltop Avenue to the east end of the street
- (b) Lake Jane Public Access
1. Lake Jane Trail from Irvin Court to Tapestry Drive
 2. Jamaca Avenue from Lake Jane Trail to 42nd Street
 3. Jane Road from Lake Jane Trail to Jane Court

THE LAKE ELMO CITY COUNCIL HEREBY ORDAINS THAT SECTION 1005.03 SUBD. 1 IS REPEALED.

ADOPTION DATE: Passed by the Lake Elmo City Council on the 19th day of September, 2006.

EFFECTIVE DATE: This Ordinance shall be effective the day following its publication.

Dated: 9-30-, 2006



Dean Johnston, Mayor

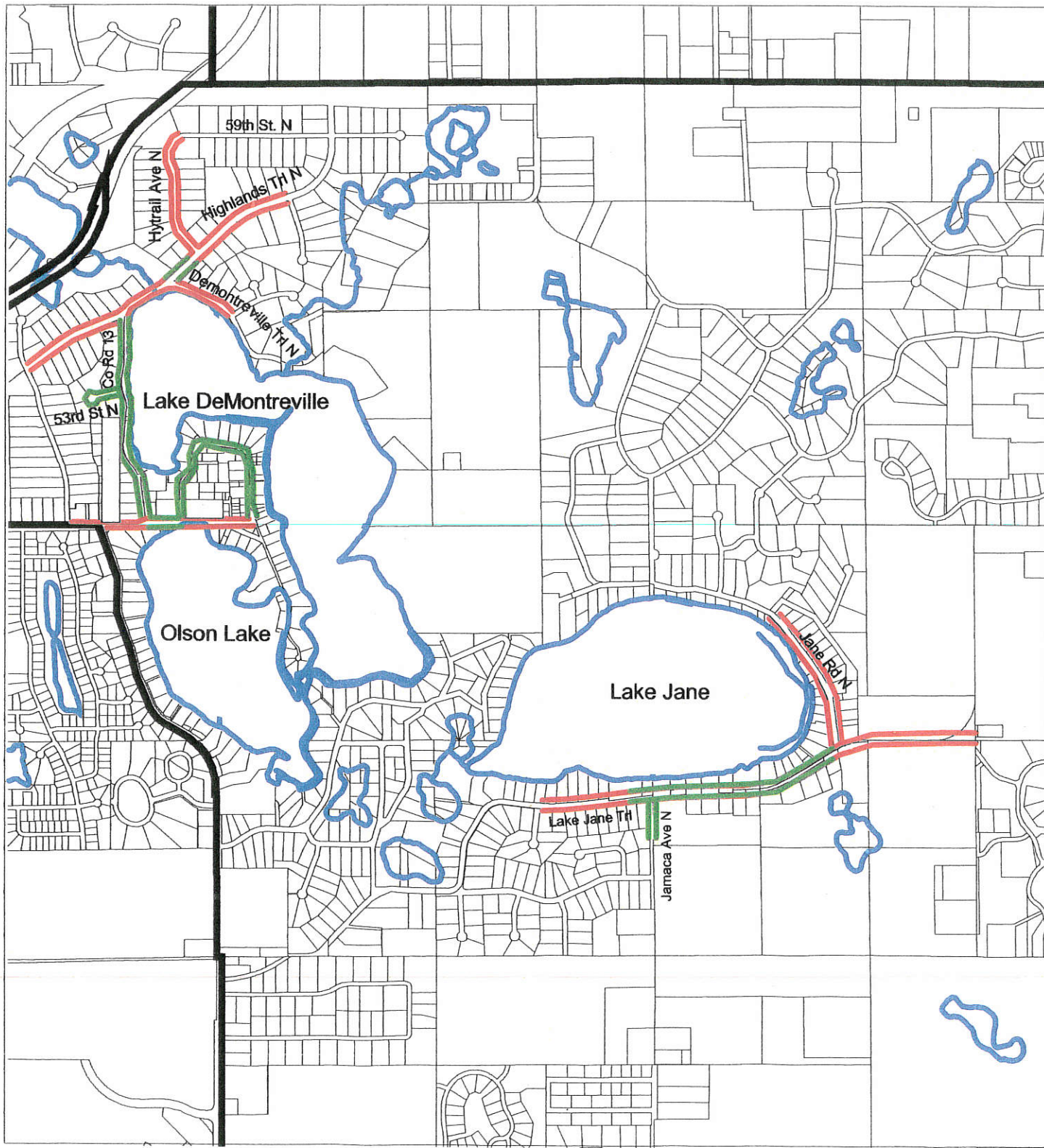
ATTEST:



Marty Rafferty, City Administrator

PUBLICATION DATE: Published on the 29th day of September, 2006

Proposed Vehicle & Trailer Towing and No Parking Locations in Tri Lakes Area



- Proposed Towing Locations
- Existing No Parking Locations



Map Created: September 13, 2006