



*Our Mission is to Provide Quality Public  
Services in a Fiscally Responsible Manner  
While Preserving the City's Open Space  
Character*

## **NOTICE OF MEETING**

**City Council Workshop  
3800 Laverne Avenue North  
September 8, 2015  
6:30 PM**

## **AGENDA**

- |  |                |
|--|----------------|
| <b>I. Call to Order</b>  | <b>6:30 PM</b> |
| <b>II. Downtown Project – Overhead to Underground Utilities Discussion</b> | <b>6:30 PM</b> |
| <b>III. Downtown Project - Phase One and Phase Two Streetscape Plans</b>   | <b>7:00 PM</b> |
| <b>IV. Adjourn</b>   | <b>8:00 PM</b> |





City of Lake Elmo  
**Landscape/Streetscape Estimated Costs - Final Design Workshop**

9/8/2015

Red items have been removed

Description	Unit	Unit Cost	Projected Total		Enhanced Design		Enhanced Design		
			Qty	Cost	Lake Elmo Avenue (UP RR To 34th St.)		Lake Elmo Avenue (34th St. To 36th St.)		
					Quantity	Cost	Quantity	Cost	
<b>BURYING OVERHEAD UTILITIES</b>									
Service Connection to Utilities		\$ 99,990	1	\$ 99,990	0	\$ 33,327	0	\$	
Commercial Building Upgrades		\$ 89,991	1	\$ 89,991	0	\$ 29,994	0	\$	
Burying Utilities	LS	\$ 346,965	1	\$ 346,930	0	\$ 115,643	0	\$	
SUBTOTAL: BURYING OVERHEAD UTILITIES									
<b>LIGHTING</b>									
Ornamental Street Lights (15' California acorn style)	EA	\$ 6,500	23	\$ 149,500	7	\$ 45,500	7	\$	
Ornamental Overhead Street Lights (Evans style)	EA	\$ 8,000	6	\$ 48,000		\$ -		\$	
Overhead Cobrahead (on wood poles)	EA	\$ 1,000	3	\$ 3,000		\$ -		\$	
SUBTOTAL: LIGHTING									
<b>HARDSCAPE</b>									
5" Concrete Walk	SF	\$ 5	35,900	\$ 179,500	7,700	\$ 38,500	5,600	\$	
12" wide Stamped Concrete Border (integral color)	SF	\$ 7	2,980	\$ 20,860	880	\$ 6,160	1,100	\$	
Concrete Permeable Pavers	SF	\$ 20	1,300	\$ 26,000	250	\$ 5,000	450	\$	
Concrete Stairs & Railings	LS	\$ 8,000	1	\$ 8,000	1	\$ 8,000	-	\$	
Concrete Seating/Retaining Wall	LS	\$ 15,000	1	\$ 15,000	1	\$ 15,000		\$	
Planter Curbing (at Lake Elmo Inn Plaza)	LF	\$ 16	125	\$ 2,000	125	\$ 2,000		\$	
SUBTOTAL: HARDSCAPE									
<b>LANDSCAPE</b>									
Overstory Street Trees	EA	\$ 600	38	\$ 22,800	3	\$ 1,800	12	\$	
Ornamental Trees	EA	\$ 450	28	\$ 12,600	2	\$ 900		\$	
Structural Planting Soil (for street trees w/ pavers)	EA	\$ 2,000	7	\$ 14,000	2	\$ 4,000	5	\$	
Plantings - Shrubs	EA	\$ 60	-	\$ -	-	\$ -	-	\$	
Plantings - Perennials	EA	\$ 30	361	\$ 10,830	104	\$ 3,120	88	\$	
Irrigation (for planting beds)	LS	\$ 15,000	-	\$ -	-	\$ -	-	\$	
SUBTOTAL: LANDSCAPING									
<b>SITE ELEMENTS / FURNISHINGS</b>									
Banner Poles (at Gateways)	EA	\$ 5,000	-	\$ -	-	\$ -	-	\$	
Bollards	EA	\$ 1,400	-	\$ -	-	\$ -	-	\$	
Bike Loops	EA	\$ 800	-	\$ -	-	\$ -	-	\$	
Benches	EA	\$ 1,600	-	\$ -	-	\$ -	-	\$	
Litter Receptacles	EA	\$ 800	-	\$ -	-	\$ -	-	\$	
SUBTOTALS: SITE ELEMENTS / FURNISHINGS									
<b>OTHER</b>									
Hanging Baskets (not shown on layout)	EA	\$ 250	44	\$ 11,000	20	\$ 5,000	14	\$	
Banners for Ornamental Lights (2 ea/pole) (not shown)	EA	\$ 500	38	\$ 19,000	10	\$ 5,000	18	\$	
Planters (individual free standing) (not shown)	EA	\$ 950	14	\$ 13,300		\$ -	8	\$	
SUBTOTAL: OTHER									
<b>PROJECT TOTAL</b>				<b>\$ 1,092,301</b>		<b>\$ 318,944</b>		<b>\$</b>	

File copy  
9/8/2015  
CE Workshop

# LAKE ELMO - FINAL DESIGN LANDSCAPE & STREETSCAPE WORKSHOP

SEPTEMBER 8, 2015

LAKE ELMO AVENUE (CSAH 17)  
Corridor Management and Safety Improvement Project

- ## TONIGHT'S WORKSHOP GOALS
- Council Consensus - Review and Approval
- Overhead utilities – bury underground.
  - Lighting design and layout.
  - Final design for landscape and streetscape features.

LAKE ELMO AVENUE (CSAH 17)  
Corridor Management and Safety Improvement Project

## OVERHEAD UTILITIES



LAKE ELMO AVENUE (CSAH 17)  
Corridor Management and Safety Improvement Project

## OVERHEAD UTILITIES



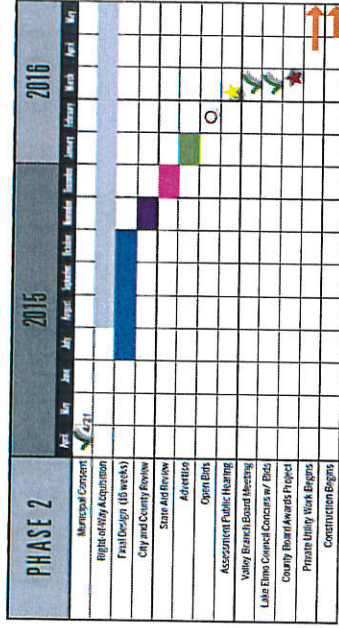
LAKE ELMO AVENUE (CSAH 17)  
Corridor Management and Safety Improvement Project

## OVERHEAD UTILITIES EXAMPLE PROJECT



LAKE ELMO AVENUE (CSAH 17)  
Corridor Management and Safety Improvement Project

## PROJECT SCHEDULE



LAKE ELMO AVENUE (CSAH 17)  
Corridor Management and Safety Improvement Project

## OVERHEAD UTILITY RELOCATION



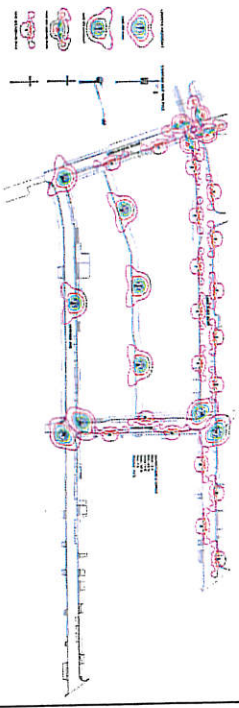
LAKE ELMO AVENUE (CSAH 17)  
Corridor Management and Safety Improvement Project

## OVERHEAD UTILITIES XCEL AND COMCAST COORDINATION

- Design schedule
- Overhead bury schedule
- Impacts to landscape and streetscape design
- Costs

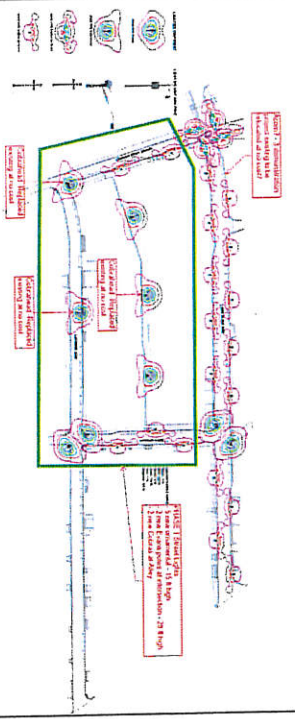
LAKE ELMO AVENUE (CSAH 17)  
Corridor Management and Safety Improvement Project

## LIGHTING DESIGN LAYOUT







LAKE ELMO AVENUE (CSAH 17)  
Corridor Management and Safety Improvement Project

## LIGHTING DESIGN LAYOUT PHASE 1



LAKE ELMO AVENUE (CSAH 17)  
Corridor Management and Safety Improvement Project

## LIGHTING DESIGN - FIXTURES

Fixture/Pole	Purchase Prepay cost	Monthly Maintenance Base Rate	Premium
 Vernon	\$ 7,510.00	\$6.14	\$ 3.00-4.00
 Acorn	\$ 6,134.00	\$6.14	\$ 2.00-3.00
 Lantern	\$ 6,302.00	\$6.14	\$ 2.00-3.00
 Colonial	\$ 5,504.00	\$6.14	\$ 1.00-2.00

LAKE ELMO AVENUE (CSAH 17)  
Corridor Management and Safety Improvement Project

## LIGHTING DESIGN COSTS

- All decorative lights above available only with the Prepay option at the approx. costs identified above.
- The estimated budget costs include fixture, 15 foot aluminum pole, and 100 feet of wiring.
- All fixtures above meet Dark Sky standards. Vernon fixture allows a bit more light to escape up due to angle design. Lantern fixture available with spikes or without spikes.
- Hanging baskets and banners may be placed on the poles for any of the above fixtures with Xcel approval. The City purchases banners and hangers directly however Xcel must review and approve structural load on pole. Aluminum poles provide adequate structural support.
- Xcel Energy no longer offers contract maintenance services to City's who choose to own and operate their own street lighting system.

LAKE ELMO AVENUE (CSAH 17)  
Corridor Management and Safety Improvement Project

## LANDSCAPE & STREETSCAPE GOALS & OBJECTIVES

- o Improve the safety at pedestrian crossings.
- o Address parking and access needs.
- o Identify enhancements to be completed with project.
- o Incorporate the elements of Branding Study.
- o Fit within the long-term transportation goals of City/County.
- o Create a positive lasting legacy for Lake Elmo.

LAKE ELMO AVENUE (CSAH 17)  
Corridor Management and Safety Improvement Project

## PROPOSED LANDSCAPE FEATURES



Autumn Blaze Maple



Honey Locust



Spring Snow Crab



Karl Foerster Grass

LAKE ELMO AVENUE (CSAH 17)  
Corridor Management and Safety Improvement Project

## LAKE ELMO – FINAL DESIGN LANDSCAPE WORKSHOP

## DISCUSSION AND REVIEW OF FINAL DESIGN LAYOUT

LAKE ELMO AVENUE (CSAH 17)  
Corridor Management and Safety Improvement Project