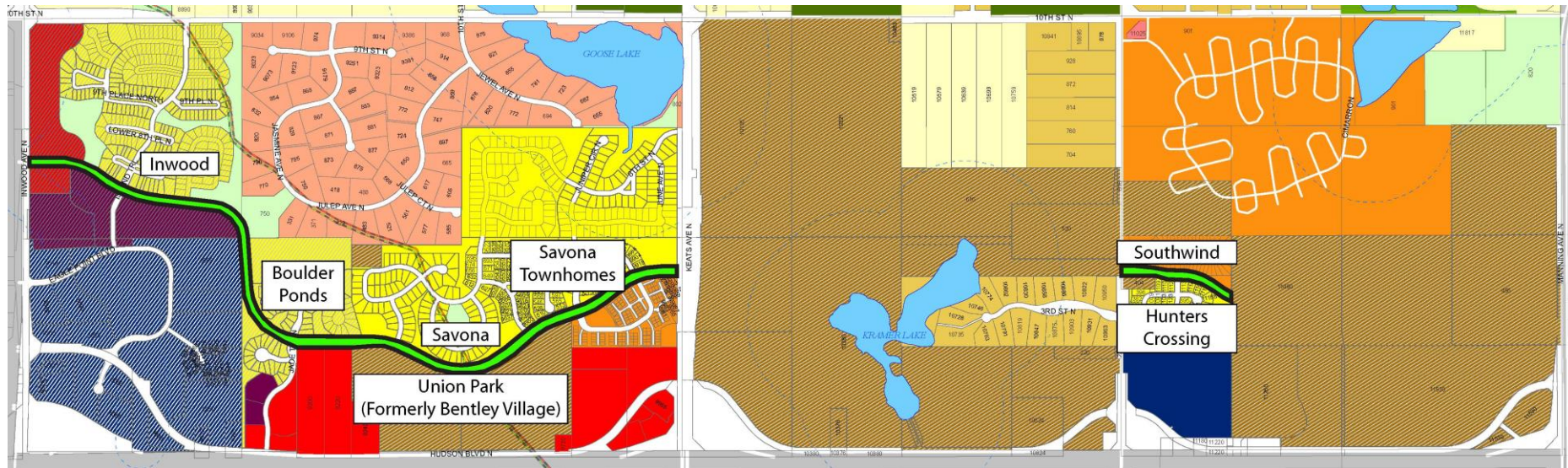


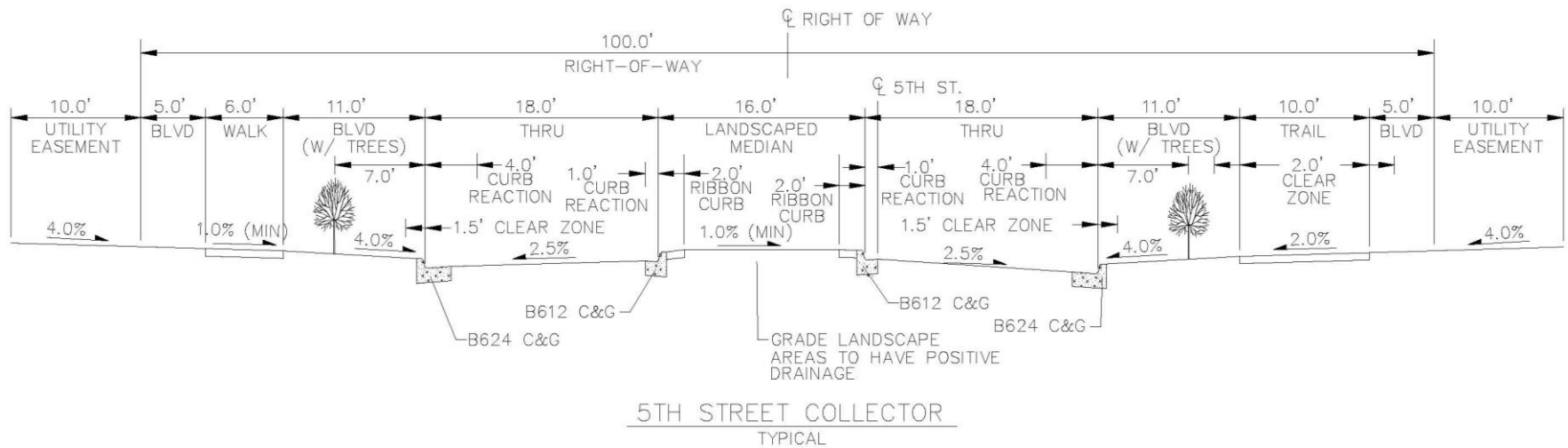
## 5<sup>TH</sup> STREET DESIGN STANDARD

*Presented by*  
Lucius Jonett, PLA

# EXISTING 5<sup>TH</sup> STREET DESIGN STANDARD – IMPLEMENTATION



# EXISTING 5<sup>TH</sup> STREET DESIGN STANDARD – DESIGN CROSS SECTION





# EXISTING 5<sup>TH</sup> STREET DESIGN STANDARD – DESIGN CROSS SECTION



Road

2 ft - Concrete

12 ft - Planting  
Bed

2 ft - Concrete

Road

16 ft BLVD, Total

# WALKING ALONG 5<sup>TH</sup> STREET (AUG 3, 2019) INWOOD





# WALKING ALONG 5<sup>TH</sup> STREET (AUG 3, 2019) BOULDER PONDS





# WALKING ALONG 5<sup>TH</sup> STREET (AUG 3, 2019) SAVONA & SAVONA TOWN HOMES



# WALKING ALONG 5<sup>TH</sup> STREET (AUG 3, 2019) HUNTERS CROSSING





# EXISTING 5<sup>TH</sup> STREET DESIGN STANDARD

**Design intent** – a grid planting of early, mid and late blooming plants to generate year round interest.

**Implementation** – has followed the current design standard, but establishment and maintenance has varied by development and homeowner's association.

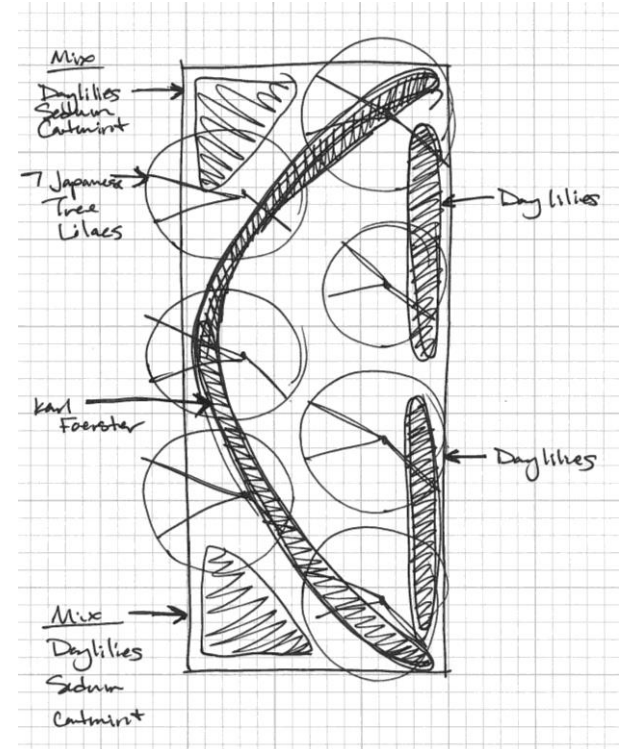
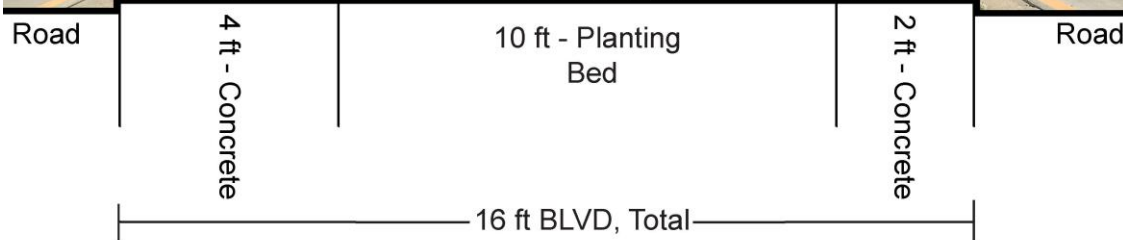
**Maintenance** – can be challenging to weed if the person doesn't know what each plant looks like.

# DESIGN PRECEDENCE

- Valley Creek Road in Woodbury, by Well's Fargo (client suggested)
- Peony Lane in Plymouth, MN
- Engler Blvd in Chaska, MN
- Levi Griffin Road in Chaska, MN
- 45<sup>th</sup> Ave N., Plymouth, MN



# DESIGN PRECEDENCE – VALLEY CREEK RD



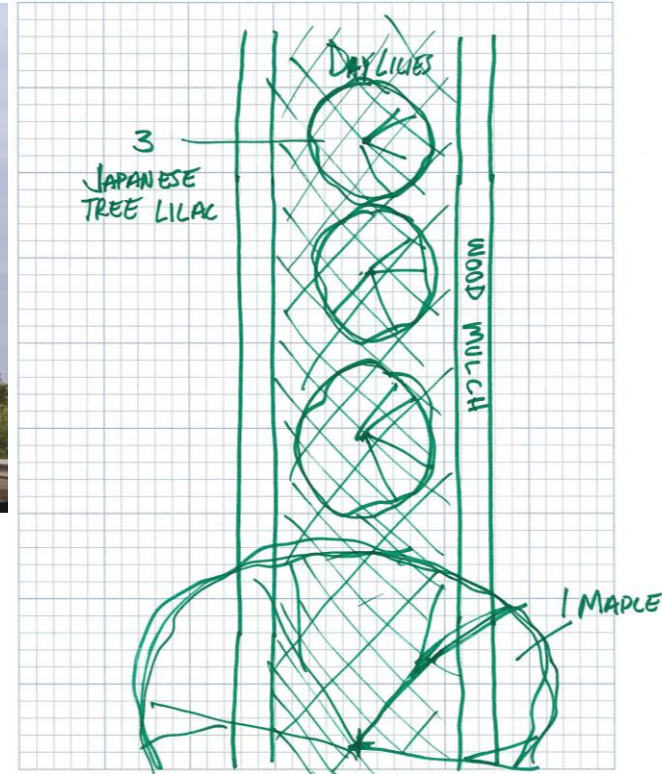
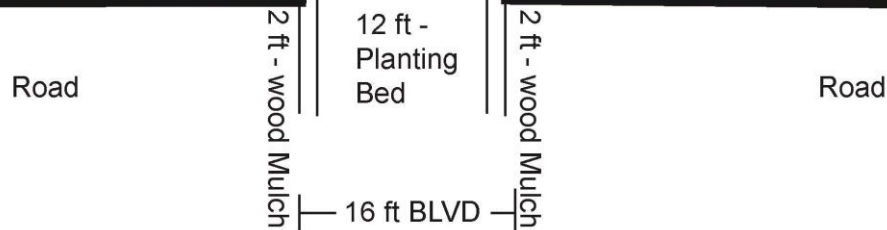
- Planting in swaths and blocks
- Median trees (Changes the outline of the street and could cause sight line issues)
- Discuss Amenities and Maintenance

# DESIGN PRECEDENCE – VALLEY CREEK RD





# DESIGN PRECEDENCE – PEONY LANE



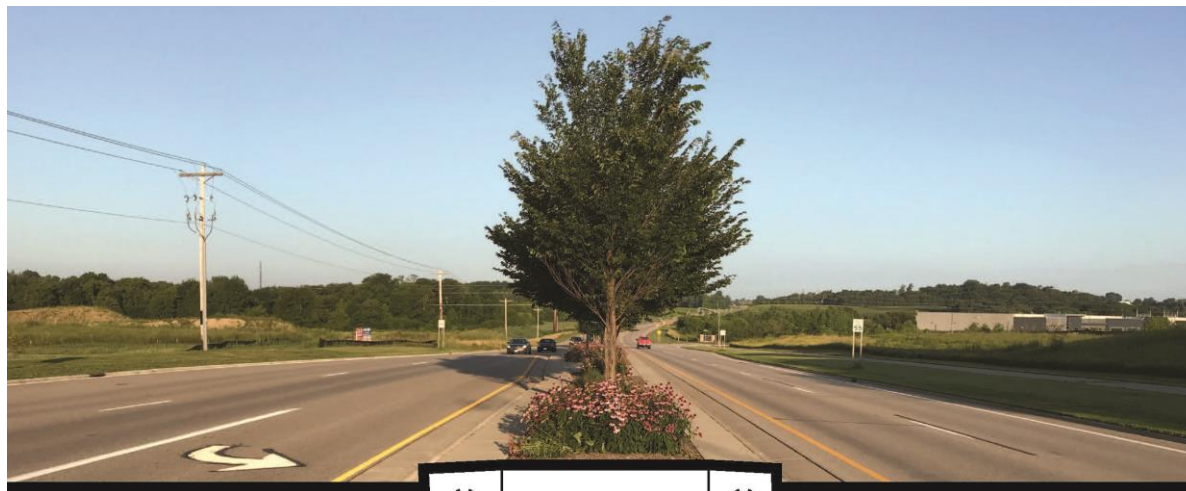
- Planting in blocks
- Median trees (Changes the outline of the street and could cause sight line issues)
- Discuss Amenities and Maintenance

# DESIGN PRECEDENCE – PEONY LANE





# DESIGN PRECEDENCE – ENGLER BLVD



Road

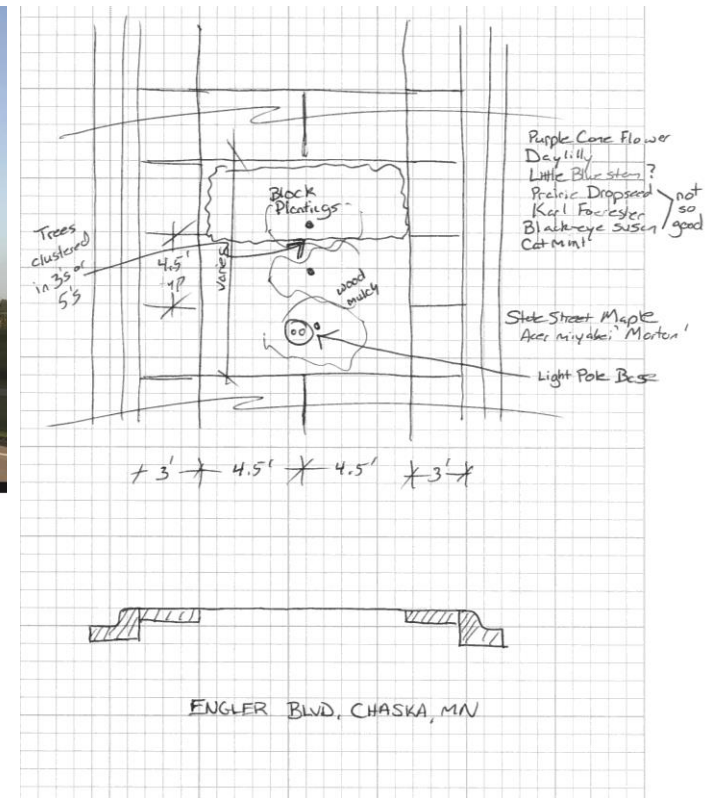
3 ft - Concrete

9 ft - Planting Bed

3 ft - Concrete

Road

16 ft BLVD, Total



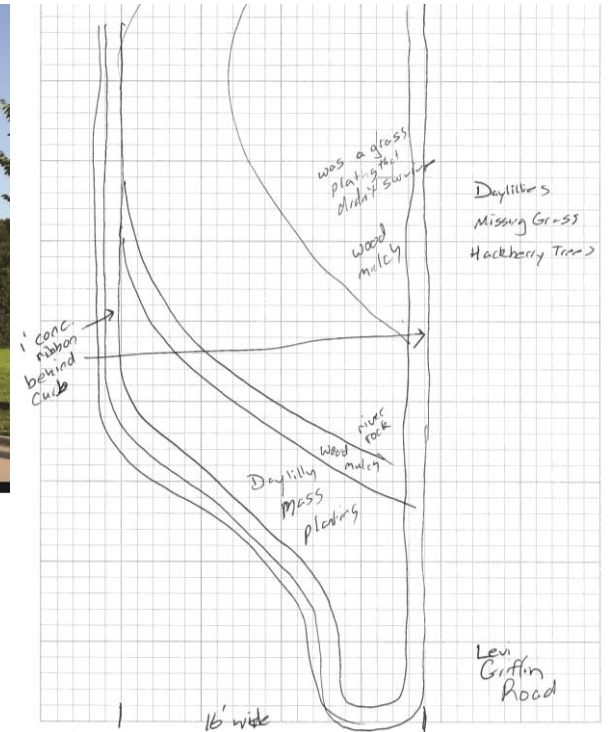
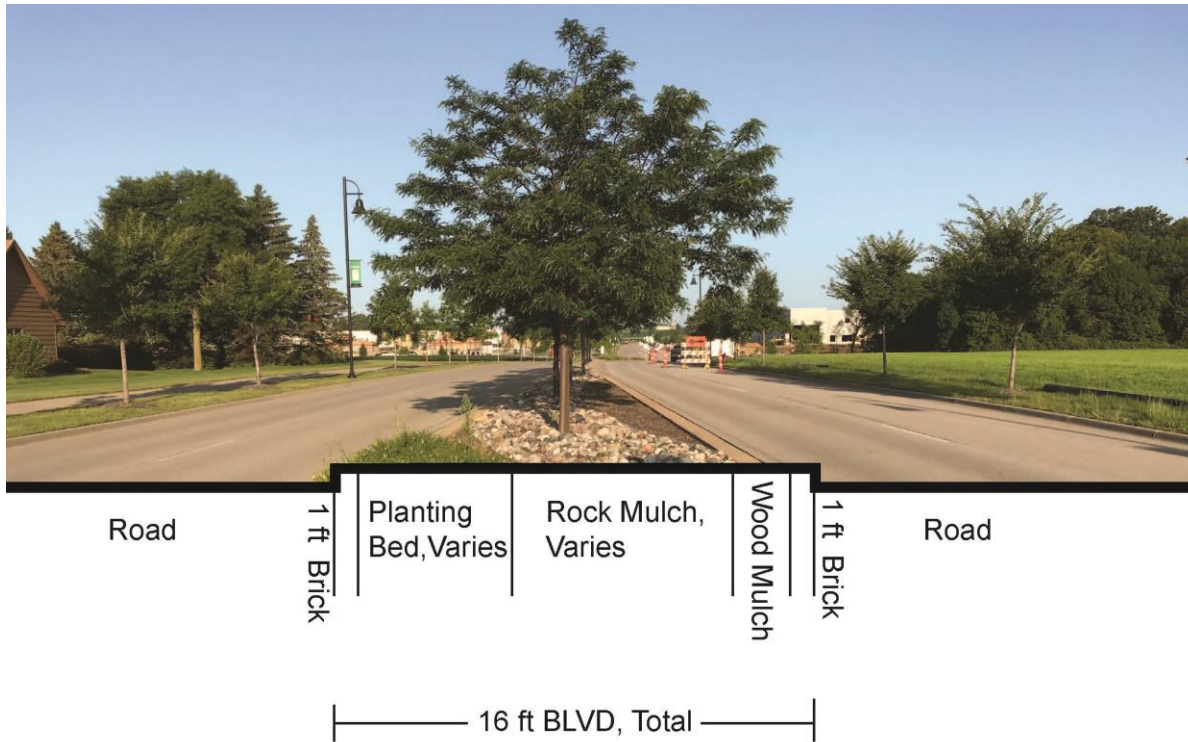
- Planting in blocks
- Median trees (Changes the outline of the street and could cause sight line issues)
- Discuss Amenities and Maintenance

# DESIGN PRECEDENCE – ENGLER BLVD





# DESIGN PRECEDENCE – LEVI GRIFFIN RD



- Planting in swaths
- Median trees (Changes the outline of the street and could cause sight line issues)
- Discuss Amenities and Maintenance



# DESIGN PRECEDENCE – LEVI GRIFFIN RD





# DESIGN PRECEDENCE – 45<sup>TH</sup> AVE N (LOOKING EAST)

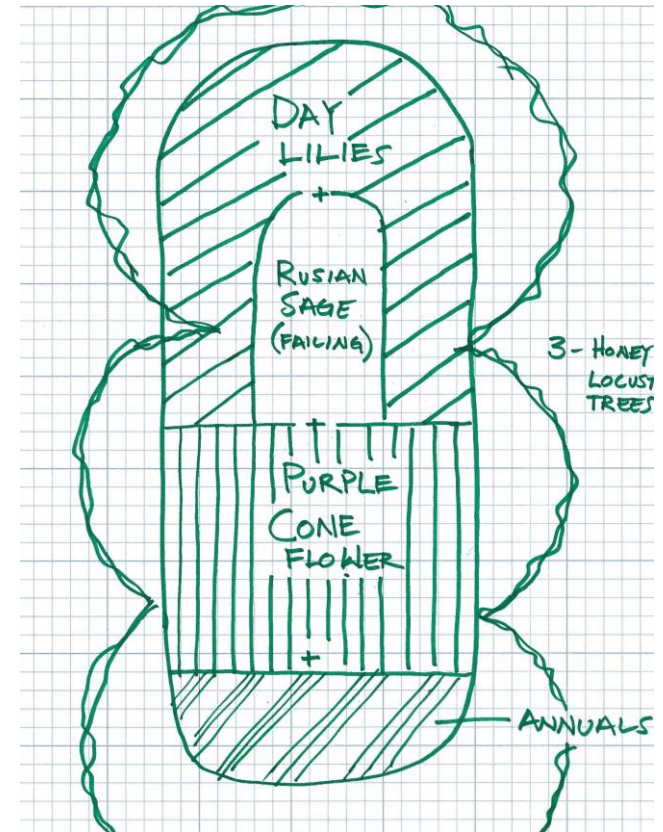


Road

Planting  
Bed, 16 ft

Road

16 ft BLVD, Total



- Planting in blocks
- Median trees (Changes the outline of the street and could cause sight line issues)
- Discuss Amenities and Maintenance

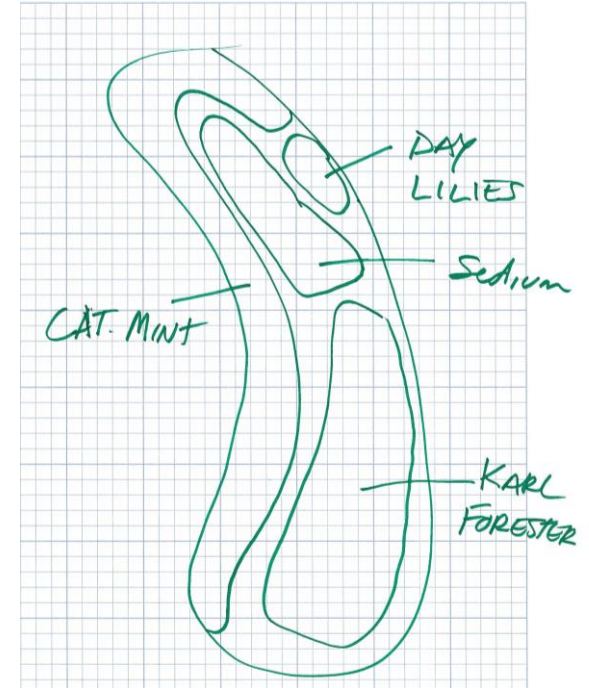


## DESIGN PRECEDENCE – 45<sup>TH</sup> AVE N (LOOKING EAST)





# DESIGN PRECEDENCE – 45<sup>TH</sup> AVE N (LOOKING WEST)



- Planting in swaths
- No median trees
- Discuss Amenities and Maintenance

# DESIGN PRECEDENCE – 45<sup>TH</sup> AVE N (LOOKING WEST)





# AMENITY & MAINTENANCE

Landscape Feature	Maintenance	
	Activity	Frequency
Concrete the Entire Median	Sweeping	1 or 2 Times Annually
Turf Grass the Entire Median	Mowing	Weekly during the growing season
	Fertilizing	1 or 2 Times Annually
	Herbiciding	1 or 2 Times Annually
	Repair any snow/plow damage	Spring
Concrete Strip Around the Median Perimeter	Sweeping	1 or 2 Times Annually
Mow Strip Around the Median Perimeter	Mowing	Weekly during the growing season
	Fertilizing	1 or 2 Times Annually
	Herbiciding	1 or 2 Times Annually
	Repair any snow/plow damage	Spring
Wood Mulch	Replacement	Every 3 years
	Weeding	1 or 2 Times Annually
Rock Mulch	Replacement	As needed if missing
	Weeding	1 or 2 Times Annually
Grid-Planting of Grasses and Plants (Consistent Multi-Season Interest)	Weeding (Difficult without Plant ID)	3 to 4 Times Annually
	Irrigation	1st year and during drought
	Cut and Dispose to Invigorate New Growth	Fall or Spring (Keep for Winter interest)
Block-Planting of Grasses and Plants (Easier Maintenance)	Weeding (Easy for volunteers)	1 or 2 Times Annually
	Irrigation	1st year and during drought
	Cut and Dispose to Invigorate New Growth	Fall or Spring (Keep for Winter interest)
Planting of Trees (Changes Character & Site Lines of street)	Replace	As needed if damaged or dying.
	Irrigation	1st year and during drought

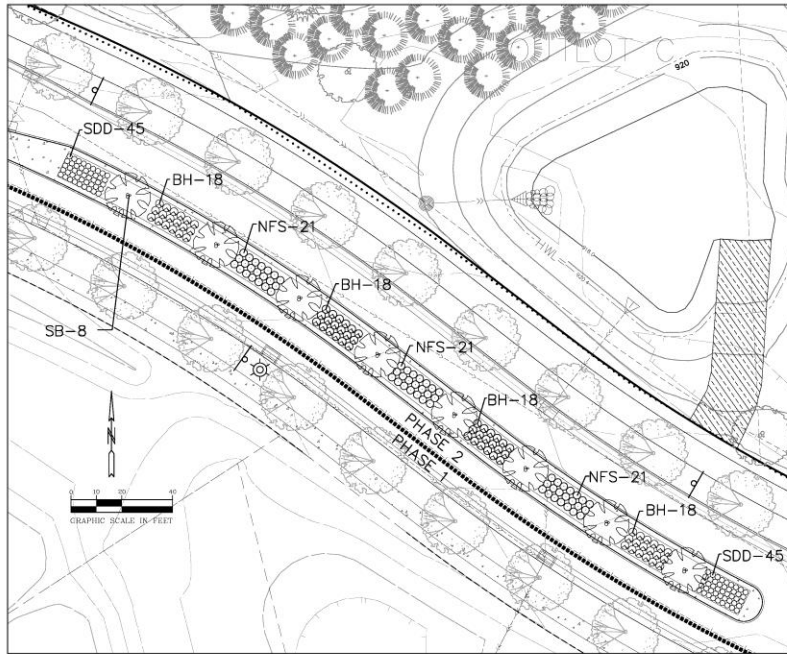
# AMENITY & MAINTENANCE – PUBLIC WORKS FEEDBACK

Landscape Feature	Maintenance	
	Activity	Frequency
<b>Concrete the Entire Median</b> <b>This is acceptable to me</b>	Sweeping	1 or 2 Times Annually
<b>Turf Grass the Entire Median</b> <b>This would be acceptable but if not irrigated it will likely brown up leading to complaints</b>	Mowing	Weekly during the growing season
	Fertilizing	1 or 2 Times Annually
	Herbiciding	1 or 2 Times Annually
	Repair any snow/plow damage	Spring
<b>Concrete Strip Around the Median Perimeter</b>	Sweeping	1 or 2 Times Annually
<b>Mow Strip Around the Median Perimeter</b>	Mowing	Weekly during the growing season
	Fertilizing	1 or 2 Times Annually
	Herbiciding	1 or 2 Times Annually
	Repair any snow/plow damage	Spring
<b>Wood Mulch</b> <b>Not interested, rain can wash it out, weeds develop, it would need replacement</b>	Replacement	Every 3 years
	Weeding	1 or 2 Times Annually
<b>Rock Mulch</b> <b>This would be an acceptable option. However dirt and leaves can fill the rock requiring weeding, cleaning or replacement in future</b>	Replacement	As needed if missing
	Weeding	1 or 2 Times Annually
<b>Grid-Planting of Grasses and Plants (Consistent Multi-Season Interest)</b> <b>This would require contracting a gardener. Too time consuming, labor intensive and costly</b>	Weeding (Difficult without Plant ID)	3 to 4 Times Annually
	Irrigation	1st year and during drought
	Cut and Dispose to Invigorate New Growth	Fall or Spring (Keep for Winter interest)
<b>Block-Planting of Grasses and Plants (Easier Maintenance)</b> <b>In looking for cost and time saving for our department I see too much time in weeding, cutting and disposing of the grass</b>	Weeding (Easy for volunteers)	1 or 2 Times Annually
	Irrigation	1st year and during drought
	Cut and Dispose to Invigorate New Growth	Fall or Spring (Keep for Winter interest)
<b>Planting of Trees (Changes Character &amp; Site Lines of street)</b> <b>This is a more acceptable option, however the cost of replacing trees if they are not watered/irrigated is costly and labor intensive</b>	Replace	As needed if damaged or dying.
	Irrigation	1st year and during drought



# SOUTHWIND – PROPOSED 5<sup>TH</sup> STREET REVISION

DETAIL A



PLANT SCHEDULE			
KEY	COMMON NAME/Scientific name	ROOT	QUANTITY
BH	BUSH HONEYSUCKLE/DIRVILLA LONICERA	#3 POT	72
NFS	NEON FLASH SPIREA/SPIRAEA X BUMALDA 'NEON FLASH'	#3 POT	63
SB	SERVICEBERRY/AMELANCHIER (CLUMP)	10-12' B&B	8
SDD	STELLA D'ORO DAYLILY/HEMORCALLIS 'STELLA D'ORO'	#1 POT	90

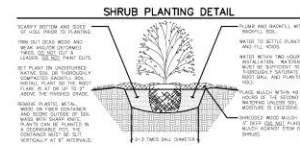
## LANDSCAPE NOTES:

MEDIAN HAS PREVIOUSLY BEEN AMENDED WITH ADEQUATE TOP SOIL

IRRIGATION MAY BE A TEMPORARY SYSTEM CONSISTING OF EITHER A SURFACE PERFORATED HOSE THAT CAN BE SHUT DOWN OR PULLED OUT AFTER A YEAR OR TWO OR THE USE OF A WATERING TRUCK ON AN AS NEEDED BASIS FOR THE FIRST GROWING SEASON. PERMANENT MECHANICAL IRRIGATION IS NOT NECESSARY.

TREES WITHIN THE 5TH STREET BOULEVARD WERE PREVIOUSLY PLANTED.

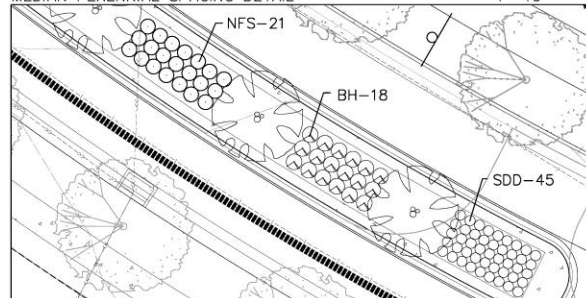
SHREDDED HARDWOOD MULCH TO A DEPTH OF 3" TO BE USED IN MEDIAN PLANTINGS.



## LANDSCAPE NOTES

- THE LANDSCAPE CONTRACTOR SHALL MEET THE PROJECT SITE TO BECOME FAMILIAR WITH THE EXISTING CONDITIONS PRIOR TO SUBMITTING A BID.
- THE LANDSCAPE CONTRACTOR SHALL NOTIFY THE LANDSCAPE ARCHITECT OF PROPOSED PHYSICAL START DATE AT LEAST 10 DAYS IN ADVANCE.
- THE LANDSCAPE CONTRACTOR SHALL BE RESPONSIBLE FOR THE FIELD VERIFICATION OF ALL EXISTING UTILITY LOCATIONS ON THE PROJECT SITE WITH SURVEY DATA AND SHALL MARK SUCH UTILITIES TO COMPARE WITH THE EXISTING UTILITY LOCATIONS ON THE PROJECT SITE. THE LANDSCAPE CONTRACTOR SHALL BE RESPONSIBLE FOR THE PROTECTION AND REPAIR OF EXISTING UTILITIES DAMAGED DURING CONSTRUCTION AT HIS RISK TO THE OWNER. NOTIFY THE LANDSCAPE ARCHITECT OF ANY DISCREPANCIES TO FACILITATE PLANT SELECTION.
- GRADING TO BE PERFORMED BY OTHERS.
- NO PLANT MATERIAL SHALL BE DELIVERED UNTIL GRADING AND CONSTRUCTION HAS BEEN COMPLETED IN THE IMMEDIATE AREA.
- ALL PLANT MATERIAL SHALL MEET THE STANDARDS YOUNG IN THE AMERICAN ASSOCIATION OF NURSERYMEN-AMERICAN STANDARD FOR NURSERY STOCK.
- ALL CONTRACT MATERIAL TO BE SHOWN IN THE CONTRACTOR A MINIMUM OF 30 DAYS PRIOR TO PLANTING ON SITE.
- RETRACTED AND CONTRACTED TREES SHALL NOT BE STAKED. ONLY THE LANDSCAPE CONTRACTOR SHALL GUARANTEE SURVIVABILITY TO A 100% SURVIVAL RATE.
- THE LANDSCAPE CONTRACTOR SHALL PROVIDE A MINIMUM GUARANTEE OF ONE YEAR FOR THE REPLACEMENT OF NEW PLANT MATERIAL. GUARANTEE SHALL BE ISSUED UPON BY THE LANDSCAPE ARCHITECT AND LANDSCAPE CONTRACTOR.
- THE LANDSCAPE ARCHITECT RESERVES THE RIGHT TO REQUEST ANY PLANTS WHICH ARE REQUIRED UNLESS THEY ARE NOT SHOWN IN THE PLAN.
- IF THERE IS A DISCREPANCY BETWEEN THE NUMBER OF PLANTS SHOWN IN THE PLAN AND THE NUMBER SHOWN ON THE PLAN, THE LANDSCAPE CONTRACTOR SHALL BE RESPONSIBLE FOR ALL MATERIALS AND PLANTING SHALL BE QUANTITIES TO COMPLETE WORK SHOWN IN THE PLAN. THE LANDSCAPE CONTRACTOR SHALL VERIFY ALL QUANTITIES SHOWN IN THE PLAN.
- CONTRACTOR SHALL BE RESPONSIBLE FOR THE PROTECTION AND REPAIR OF EXISTING UTILITIES DAMAGED DURING CONSTRUCTION AT HIS RISK TO THE OWNER. NOTIFY THE LANDSCAPE ARCHITECT OF ANY DISCREPANCIES TO FACILITATE PLANT SELECTION.
- THE LANDSCAPE CONTRACTOR SHALL MEET THE PROJECT SITE TO BECOME FAMILIAR WITH THE EXISTING CONDITIONS PRIOR TO SUBMITTING A BID.
- THE LANDSCAPE CONTRACTOR SHALL NOTIFY THE LANDSCAPE ARCHITECT OF PROPOSED PHYSICAL START DATE AT LEAST 10 DAYS IN ADVANCE.
- THE LANDSCAPE CONTRACTOR SHALL BE RESPONSIBLE FOR THE FIELD VERIFICATION OF ALL EXISTING UTILITY LOCATIONS ON THE PROJECT SITE WITH SURVEY DATA AND SHALL MARK SUCH UTILITIES TO COMPARE WITH THE EXISTING UTILITY LOCATIONS ON THE PROJECT SITE. THE LANDSCAPE CONTRACTOR SHALL BE RESPONSIBLE FOR THE PROTECTION AND REPAIR OF EXISTING UTILITIES DAMAGED DURING CONSTRUCTION AT HIS RISK TO THE OWNER. NOTIFY THE LANDSCAPE ARCHITECT OF ANY DISCREPANCIES TO FACILITATE PLANT SELECTION.
- GRADING TO BE PERFORMED BY OTHERS.
- NO PLANT MATERIAL SHALL BE DELIVERED UNTIL GRADING AND CONSTRUCTION HAS BEEN COMPLETED IN THE IMMEDIATE AREA.
- ALL PLANT MATERIAL SHALL MEET THE STANDARDS YOUNG IN THE AMERICAN ASSOCIATION OF NURSERYMEN-AMERICAN STANDARD FOR NURSERY STOCK.
- ALL CONTRACT MATERIAL TO BE SHOWN IN THE CONTRACTOR A MINIMUM OF 30 DAYS PRIOR TO PLANTING ON SITE.
- RETRACTED AND CONTRACTED TREES SHALL NOT BE STAKED. ONLY THE LANDSCAPE CONTRACTOR SHALL GUARANTEE SURVIVABILITY TO A 100% SURVIVAL RATE.
- THE LANDSCAPE CONTRACTOR SHALL PROVIDE A MINIMUM GUARANTEE OF ONE YEAR FOR THE REPLACEMENT OF NEW PLANT MATERIAL. GUARANTEE SHALL BE ISSUED UPON BY THE LANDSCAPE ARCHITECT AND LANDSCAPE CONTRACTOR.
- THE LANDSCAPE ARCHITECT RESERVES THE RIGHT TO REQUEST ANY PLANTS WHICH ARE REQUIRED UNLESS THEY ARE NOT SHOWN IN THE PLAN.
- IF THERE IS A DISCREPANCY BETWEEN THE NUMBER OF PLANTS SHOWN IN THE PLAN AND THE NUMBER SHOWN ON THE PLAN, THE LANDSCAPE CONTRACTOR SHALL BE RESPONSIBLE FOR ALL MATERIALS AND PLANTING SHALL BE QUANTITIES TO COMPLETE WORK SHOWN IN THE PLAN. THE LANDSCAPE CONTRACTOR SHALL VERIFY ALL QUANTITIES SHOWN IN THE PLAN.
- CONTRACTOR SHALL BE RESPONSIBLE FOR THE PROTECTION AND REPAIR OF EXISTING UTILITIES DAMAGED DURING CONSTRUCTION AT HIS RISK TO THE OWNER. NOTIFY THE LANDSCAPE ARCHITECT OF ANY DISCREPANCIES TO FACILITATE PLANT SELECTION.

MEDIAN PERENNIAL SPACING DETAIL



PHASE 1 INSTALLED BY RYLAND/CALATLANTIC HOMES.  
PHASE 2 INSTALLED BY SOUTHWIND BUILDERS.  
PHASE 2 INCLUDES THE CENTER MEDIAN

BY PLAN 110101 STREET LAND MEDIAN ALTERNATIVE

**PIONEER**engineering

2422 Dempster Drive  
Minnetonka, MN 55312  
(651) 681-1918  
Fax: (651) 681-5488  
www.pioneereng.com

License number for this plan was prepared by  
an individual who is a duly Licensed Landscape Architect  
in the State of Minnesota.  
Reg. No. 20570 Date: 11.1.19

Drawn: J.L.D.  
Designed: J.L.D.  
Checked: J.L.D.

5TH STREET MEDIAN REVISION

SOUTHWIND BUILDERS INC.  
2102 LEBLANC STREET  
WHITE BEAR LAKE, MINNESOTA 55120

SOUTHWIND OF LAKE ELMO  
LAKE ELMO, MINNESOTA

MT OF 1

# TRANSITION STRATEGY IF CHANGE TO THE DESIGN STANDARD IS DESIRED

- Recommend some additional plantings to Southwind proposal and approve the revision.
- Update the 5<sup>th</sup> Street Design Standard to reflect the new planting plan.
- Develop phasing plan to update existing 5<sup>th</sup> Street Medians.
  - City contract the work out?
  - Garden club or community project?

# QUESTIONS





