



*Our Mission is to Provide Quality Public
Services in a Fiscally Responsible Manner in
Partnership with our Community.*

NOTICE OF MEETING

**City of Lake Elmo Parks Commission
3800 Laverne Avenue North
August 15, 2022 6:30 PM**

AGENDA

1. Call to Order
2. Pledge of Allegiance
3. Approve Agenda
4. Approve Minutes
 - a) July 19, 2022
5. Public Comments
6. Kleis Park Site Visit Discussion
7. Pebble Park Site Visit Discussion
8. Communications
 - a) Hamlet Trail
 - b) Ballfields Survey

Adjourn

****Note: Every effort will be made to accommodate person or persons that need special considerations to attend this meeting due to a health condition or disability. Please contact the Lake Elmo City Clerk if you are in need of special accommodations.*

City of Lake Elmo Parks Commission Minutes

July 18, 2022

Members Present: Commissioners Hoelscher, Kastler, Rivera, Hodges, and Barrett

Staff Present: Assistant Public Works Director Swanepoel and City Planner Hetzel

The meeting was called to order by Hoelscher at 6:30 PM.

Approval of Agenda

Discussion on park review.

Barrett motioned to approve the agenda as presented, Hoelscher provided a second; unanimously approved 5-0.

Approval of Minutes

Hodges motioned to approve the June 20th, 2022 Parks Commission Minutes as presented, Barrett provided a second; unanimously approved 5-0.

Public Comments

None

Tablyn Park Site Visit

City Planner Hetzel provided public comments from the survey. Discussion held regarding resident comment, amenity conditions, and CIP.

Demontreville Park Site Visit

Aimmie Hauer, walking distance from Lake Demontreville, provided comments regarding potential improvements. Discussion was held regarding amenity conditions.

Schiltgen East – Preliminary Plat/PUD

City Planner Hetzel presented the preliminary plat plan. Representative Steve Schwanke provided additional information regarding the secondary access and storm water flow plan. Discussion held regarding parking and the secondary access location.

Kastler motioned to recommend against constructing a new road because of the impact to the park, Barrett provided a second; discussion. Motion passed unanimously 5-0.

Schiltgen Farmstead – Preliminary Plat/PUD

City Planner Hetzel presented the plat and park dedication requirements. Discussion held regarding the proposed dedicated land. Craig Allen with GWSA Land Development responded to commission questions.

Hoelscher motioned to recommend taking land in lieu of cash, be considered for public access, be considered for a neighborhood/community park, and potentially linked with Sunfish Lake Park; Rivera provided a second. Discussion held. Kastler friendly amended the motion to include that it shall be linked to our trail system, Hoelscher seconded the amendment; motions passed unanimously 5-0.

Communications

- a) Resignation of Commissioner Isak Nightingale.
- b) Kleis and Pebble will be discussed at the next meeting.
- c) City continue to reach out with communications through social media.
- d) Discuss Tana Ridge Park and Hamlet.

Hoelscher adjourned the meeting at 8:08 PM

**Respectfully Submitted,
Rebecca McGuire, Deputy Clerk**



STAFF REPORT

DATE: 08/15/2022

DISCUSSION

AGENDA ITEM: Klies Park Site Visit Discussion

TO: Parks Commission

SUBMITTED BY: Adam Swanepoel, Assistant Public Works Director
Reviewed By: Marty Powers, Public Works Director
Ben Hetzel, City Planner

BACKGROUND:

During the June 20th Parks Commission meeting, after review and discussion of the survey results, members suggested all members conduct a walkthrough of Klies Park to bring up discussion and ideas for the 2023 park improvement project. The Commission has asked for public input from the residences of Lake Elmo as well as park users.

ISSUE BEFORE COMMISSION:

What improvements should the commission start planning for in Klies Park?

Would you like to see the ballfield at Klies Park removed, improved or left as is?

Would you like to see the Klies Park playset removed or replaced around the year 2026?

Would you like to see the Swings replaced since they will be removed soon due to damage?

Would you like to see a disc golf course added to Klies Park?

Are there any other amenities you would like to see added in Klies Park?

PROPOSAL DETAILS/ANALYSIS:

With Klies Park due for updates in the near future, what are the recommended updates users would like to see? What the Parks Commission should consider are the user's recommendations as well as the results from the survey taken in May/June of 2022. In addition, the commission should seek to improve the parks overall appearance as well as providing an inviting space for new and additional users.

PUBLIC COMMENT:

Lake Elmo City staff advertised an invitation for the public to provide input on Klies Park future improvements either by attending the August 15th Parks meeting or by providing staff with written comments. Staff has received the following comments from the public:

The most common park activities include:

- Dog walking and fetch
- Small children baseball with parents
- Football and soccer
- Frisbee
- Picnics

Center field and right field are under water in the spring.

Due to close proximity of houses, please do not add activities that create noise or require outdoor lighting. No pickleball please.

The playground platforms are warped, rusted, and have sharp edges. Need replacing. (Pictures provided)

The existing baby swing, swings sideways when pushed. A new swing set with a tandem toddler/parent option would be nice. (pictures provided)

Support of Klies Park disc golf.

RECOMMENDATION:

Have an open discussion with members and the public on any potential updates to Klies Park in 2023. All formal recommendations will be compiled and presented at the September 2022 Parks Commission meeting.

ATTACHMENTS:

1. Park Survey Results
2. Public Comment Emails

From: [Tom Simpson](#)
To: [Ben Hetzel](#)
Cc: [Sharon Simpson](#)
Subject: Kleis Park Improvements
Date: Monday, August 1, 2022 11:55:03 AM

Caution: This email originated outside our organization; please use caution.

Hello Ben. My name is Tom Simpson, and my wife Sharon and I live across the street from Kleis Park at 5270 Jamaca Blvd N.

We've lived at this address since 1983, so have had a front row seat to the activities in the park for a long time. We actually planted and nurtured several of the trees long ago around the perimeter of the park. Here are some thoughts about the park and how it's used.

Since it's a small park, it is used almost exclusively by neighbors who walk to the park. Just a few times each summer families, generally with young children, drive in to use the playground area. Bottom line, our neighborhood now has many young families, and the park is ideal for them.

The most common activities in the park are:

Dog walking along the trail in the woods.

Tossing a ball to play fetch with dogs.

Small kids playing baseball with parents.

Pick-up games of football or soccer, again small kids with parents.

Frisbee etc. games by older kids and young adults.

Family picnics by the playground.

Unfortunately every few months older kids come in with 4-wheelers and motorbikes and do some damage to the infield.

One important issue to consider is that the right field and center field areas of the park are under water after moderate or heavy rainfall and during spring thaw.

It's a small park, with houses close by, so on behalf of the neighbors I'd request that you not add lights or bring in noisy activities (please no pickleball!). Also, if you do add activities, please try not to break up the open area that is the outfield for the baseball diamond, since that area sees the greatest variety of activities.

We'll be out of town during the August 15 meeting, but if you would like to talk about the park, you're welcome to give me a call.

Tom Simpson
651 336 1631

From: [Julia Hughes](#)
To: [Ben Hetzel](#)
Subject: Kleis playground
Date: Sunday, July 31, 2022 5:44:53 PM
Attachments: [image0.jpeg](#)
[image1.jpeg](#)
[image2.jpeg](#)
[image3.png](#)

Caution: This email originated outside our organization; please use caution.

Hello,

I am unable to attend the Parks Commission meeting but have a few requests and suggestions for Kleis park.

The platforms are warped and areas are rusted and have sharp edges. These could be replaced or repaired. (Pictures attached).



Replacing the “interactive” board with the missing steering wheel would be nice.



The baby swing is spaced too close at the top so it swings sideways when pushed. Or even better, a new swing set that includes a tandem swing for both baby/toddler and parent to enjoy (see pic).



If there really is a little extra room in the budget, a small toddler play area would fit nicely if the swing set were rotated.

We’ve enjoyed this park for a very long time and hope to continue for years to come.

Thank you,
Julia Doroff

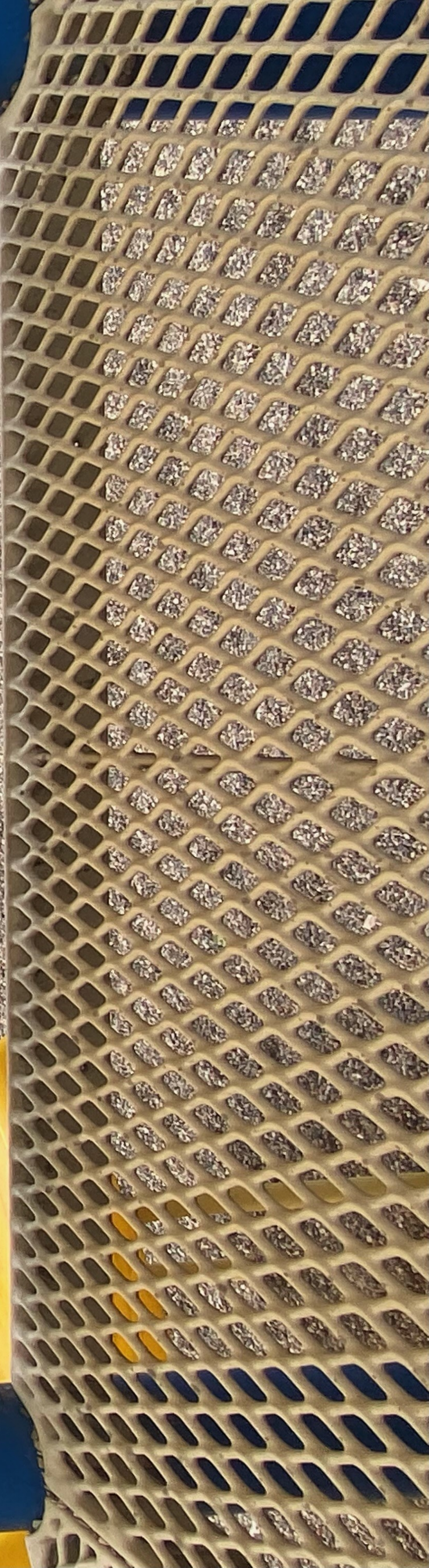
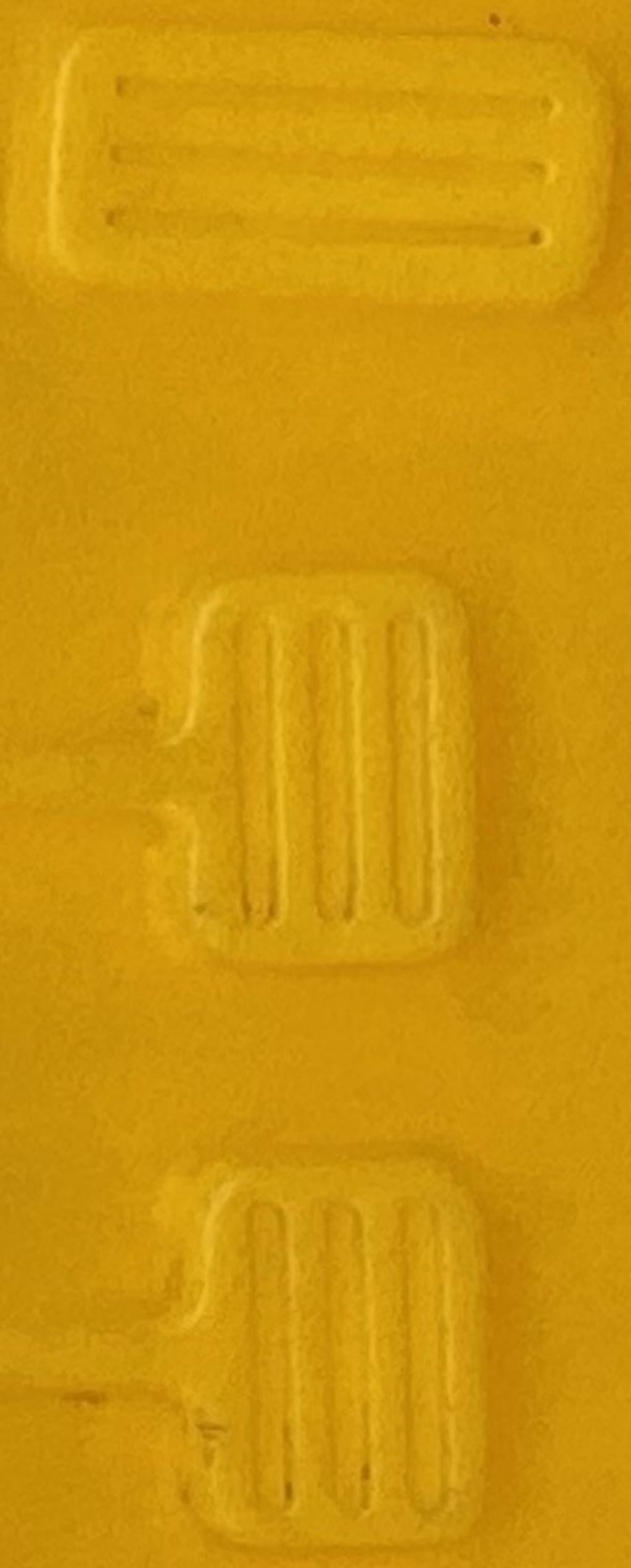
Sent from my iPhone







**TURBO
PRESS
BOOST**





Little Tikes Commercial

Visit

Generation Swing Seat

\$1,083.00* · In stock · Brand: LTC

Playgrounds aren't always as convenient for parents as they are for kids. Generation swings provide the perfect solution, giving adults and kids a fun ...

* Check website for latest pricing and availability. Images may be subject to copyright. **Learn More**



Show all images of tandem park s...

AA

Q tandem park swing





STAFF REPORT

DATE: 08/15/2022

DISCUSSION

AGENDA ITEM: Pebble Park Site Visit Discussion

TO: Parks Commission

SUBMITTED BY: Adam Swanepoel, Assistant Public Works Director
Reviewed By: Marty Powers, Public Works Director
Ben Hetzel, City Planner

BACKGROUND:

During the June 20th Parks Commission meeting, after review and discussion of the survey results, members suggested all members conduct a walkthrough of Pebble Park to bring up discussion and ideas for the 2023 park improvement project. The Commission has asked for public input from the residences of Lake Elmo as well as park users.

ISSUE BEFORE COMMISSION:

What improvements should the commission start planning for in Pebble Park?

Would you like to see the Pebble Park playset updated or removed?

Would you like to see the Pebble Park tennis courts refurbished, modified for pickle ball or removed?

Would you like to see the basketball court at Pebble Park removed, refurbished or updated to a full court?

Would you like to see the rebound wall updated or removed?

Are there any other amenities you would like to see added in Pebble Park?

PROPOSAL DETAILS/ANALYSIS:

With Pebble Park due for updates in 2023 and 2024, what are the recommended updates users would like to see? What the Parks Commission should consider are the user's recommendations as well as the results from the survey taken in May/June of 2022. In addition, the commission should seek to improve the parks overall appearance as well as providing an inviting space for new and additional users.

PUBLIC COMMENT:

Lake Elmo City staff advertised an invitation for the public to provide input on Pebble Park future improvements either by attending the August 15th Parks meeting or by providing staff with written comments. Staff has received the following comments from the public:

Eight comments supporting the addition of more pickleball courts in Lake Elmo. Three of the eight comments specifically support adding pickleball courts in Pebble Park.

Consider safety measures to control vandalism, littering, and parked car loitering. Examples include security cameras, police patrol, and an entrance gate to regulate hours of use.

The playground zipline is a popular attraction.

Make basketball court full size.

Would like to see a new playground. The two slides have been removed and openings boarded up with plywood.

Park spaces are frequently used for gathering such as Easter egg hunts, BBQs, and soccer games. Would like to see another picnic table under the shelter and another BBQ grill.

Consider lighting options for the park, but also consider abutting properties.

CONSIDERATIONS:

City staff would support a form of a security camera if felt necessary. The Public Works Department has indicated lighting was added to the parking area recently and requested that the Sherriff drive through City parks more often. City staff do not recommend a gate due to the many issues associated with the Sunfish Lake Park gate including costly repairs and the likelihood of park visitors getting trapped inside after closing.

RECOMMENDATION:

Have an open discussion with members and the public on any potential updates to the Pebble Park in 2023 and 2024. All formal recommendations will be compiled and presented at the September 2022 Parks Commission meeting.

ATTACHMENTS:

1. Park Survey Results
2. Public Comments

Ben Hetzel

From: Jane Nienaber <jane.nienaber@gmail.com>
Sent: Monday, August 1, 2022 9:50 AM
To: Ben Hetzel
Subject: Future improvements for Pebble Park

Caution: This email originated outside our organization; please use caution.

For the August 15th, 2022 Parks Commission meeting

To the parks commission,

We would love to see Pebble Park improved and reimaged. Our young family walks to Pebble Park on a weekly basis.

First, we would like to see a new playground. Currently, the existing playground is in rough shape. It had two slides that have been removed and the openings are now just boarded up with plywood.

This spaces is frequently used for community and neighborhood gatherings like an annual Easter egg hunt, soccer games and neighborhood BBQs. We'd love to see another picnic table under the shelter and a bbq grill.

Lastly, but most concerning, Pebble Park has been a victim of frequent vandalism, littering, parked car loitering and it is a drug use area. I think the problem stems from the hidden parking lot that is "open" 24 hours a day. I think real security cameras, timed gates for the parking lot, more frequent police patrol in the evening (or all 3) would help the issues.

If this safety issue isn't addressed, I believe it will continue to taint this park. Please make safely a top priority.

Thank you for listening and considering neighborhood input on this special park.

Sincerely,
The Nienaber family

Ben Hetzel

From: Doug Dufty <dkdufty@hotmail.com>
Sent: Saturday, July 30, 2022 8:09 AM
To: Ben Hetzel
Subject: Lake Elmo Pickle Ball

Caution: This email originated outside our organization; please use caution.

By adding pickle ball courts, excellent attention is given to expanding general recreation opportunities to the area population.

Stillwater resident that plays now in LE Legion Park.

Ben Hetzel

From: Laurie Hamerly <lauriehamerly@comcast.net>
Sent: Friday, July 29, 2022 8:59 AM
To: Ben Hetzel
Subject: Park changes

Caution: This email originated outside our organization; please use caution.

I am 63 years old and play Pickleball at Lake Elmo Lions park several times a week. My children also play. I fully support PB courts at Pebble park. This sport is only going to continue to grow. My son is a disc golf player, and I know he would love to see that installed at Kleis park as well. Thank you for considering this.
Laurie Hamerly

Ben Hetzel

From: Jim voeller <jvcv55556@gmail.com>
Sent: Tuesday, August 2, 2022 6:35 AM
To: Ben Hetzel
Subject: Park Input

Caution: This email originated outside our organization; please use caution.

My name is Jim Voeller. I live at 11314 12th St N and have for over 30 years. I would like to see more pickle ball courts in our town. There is a group of us (about 40 people) who play at Lions Park every morning. Not everyone shows up every day but the sport is very popular and it's great that the permanent hockey boards at Lions Park get dual use—winter for hockey and spring, summer and fall for pickle ball. In fact, the courts at Lions Park could use some resurfacing if there is money in the budget. Thank you.

Sent from my iPhone

Ben Hetzel

From: depearson@comcast.net
Sent: Saturday, July 30, 2022 10:26 AM
To: Ben Hetzel
Subject: pebble park

Caution: This email originated outside our organization; please use caution.

Hi Ben,

I saw that the Parks Commission is making plans for Pebble Park in 2024. Too bad it's not 2023. But then I'm being selfish living so close to the park and an avid pickleball player. I am all for fixing the tennis courts and (assume) adding striping for pickleball will be done since it's a fast-growing sport.

Making the basketball court full size, I think is a good idea, though I don't play basketball. I've noticed more young families are moving into the area and the kids are growing and will probably use the court.

Lighting might be an issue to consider. The park needs lighting, the neighbors on the periphery probably don't want to it.

Safety is a big concern. Now bigger than ever with all the housing going in across the road. It's probably too expensive to circle the whole park in 10-foot chain-link fencing. (A person can dream.) At minimum, would a gate that closes at 10 p.m. help keep the riffraff out?

Someone suggested to me that there should be cameras around. Even if they didn't work. My opinion is that if there are cameras, they should work. And what would this technology provide besides ongoing expense? (My imagination is running wild—too much television.) I expect the benefit to cost won't make this idea feasible. But then, I could be wrong. (I haven't met my quota of *wrongs* for the week yet. Although my husband might say differently.)

Many people walk their dogs in the park that I expected to see poo piles a few days ago when I walked through there. I was wrong, no obvious *dumpings*. In fact, the park looked clean.

Thank you for the opportunity to express my concerns.

Diane Pearson

Ben Hetzel

From: CATHY CATHY <cbritz@comcast.net>
Sent: Friday, August 5, 2022 6:31 PM
To: Ben Hetzel
Subject: Pebble Park

Caution: This email originated outside our organization; please use caution.

Hello Ben,

I am a Lake Elmo resident on Hidden Bay Trail. I understand that the city is looking for input on future improvements to Pebble Park.

We occasionally bring our grandchildren to play on the playground and ride the zipline. They really enjoy their time there. They love the zipline! It's a nice walk from Hidden Bay to Deer Pond Court where we can then walk the trail to the park. It's nice to have that entrance to the park.

I would really enjoy some future pickleball courts. Currently we drive to Ivywood Park to practice pickleball and Shawnee Park in Woodbury for Open play pickleball. Access to courts at Pebble Park would be ideal. The Woodbury Parks and Rec department would likely have a lot of good information for you on their successes. The Shawnee Pickleball Club is so well attended that they had to limit enrollment this summer.

If pickleball courts get the green light, please feel free to reach out to us pickleball players for input. There are a lot of us!!

Thank you,
Cathy Britz
651-214-4549

Ben Hetzel

From: Jo Ellen <joellentate@gmail.com>
Sent: Tuesday, August 2, 2022 10:51 AM
To: Ben Hetzel
Subject: Pickleball Courts in Lake Elmo
Attachments: IMG_3575.jpg

Caution: This email originated outside our organization; please use caution.

Ben,
First of all, thanks for your work with the parks in our city of Lake Elmo. My husband and I enjoy using several of them.

The one that I use the most is Lion's Park to play pickleball. We have a group of around 20 people who play every weekday morning - not 20 every day, but most of the courts are full every day. We play as soon as the nets go up in the spring and until they take them down in the fall. We all would like to see more courts built in Lake Elmo. We definitely endorse building them at Pebble Park. There is a huge need for more courts since pickleball is such a growing sport.

And it would be great if the courts at Lion's Park could be resurfaced in the future. There are some eroded places on a couple of the courts.

I've attached a picture from Lion's Park this morning. A hot, humid day and we had about 18 people there.

Thanks,
Jo Tate
11588 20th St. N.
Lake Elmo

Ben Hetzel

From: johnphamerly <johnphamerly@comcast.net>
Sent: Friday, July 29, 2022 9:04 AM
To: Ben Hetzel
Subject: Pickelball courts in Pebble park

Caution: This email originated outside our organization; please use caution.

I strongly support adding pickelball courts to pebble park. As the fastest growing sport and inclusive of all sectors of our community the need and desire for quality courts in local parks is wanted and necessary. I believe that this is wise usage of city funds as pickelball provides a healthy, social and inexpensive activity for all ages, especially helpful in the fitness of our middle life and senior residents . I believe the need and the desire directly aligns with the city's mission statement = **"The mission of the City of Lake Elmo is to provide planned, quality public services consistent with the City's character in a fiscally responsible manner in partnership with our community."**

I am happy to discuss and promote via phone or email.
John P Hamerly, M.D.
9429 Jane Rd N
Lake Elmo, MN 55042
651 235 4060

Ben Hetzel

From: Jenifer Watters <jeniferwatters@gmail.com>
Sent: Monday, August 8, 2022 1:10 PM
To: Ben Hetzel
Subject: Support for Pickleball courts in Lake Elmo

Caution: This email originated outside our organization; please use caution.

Hi Ben,

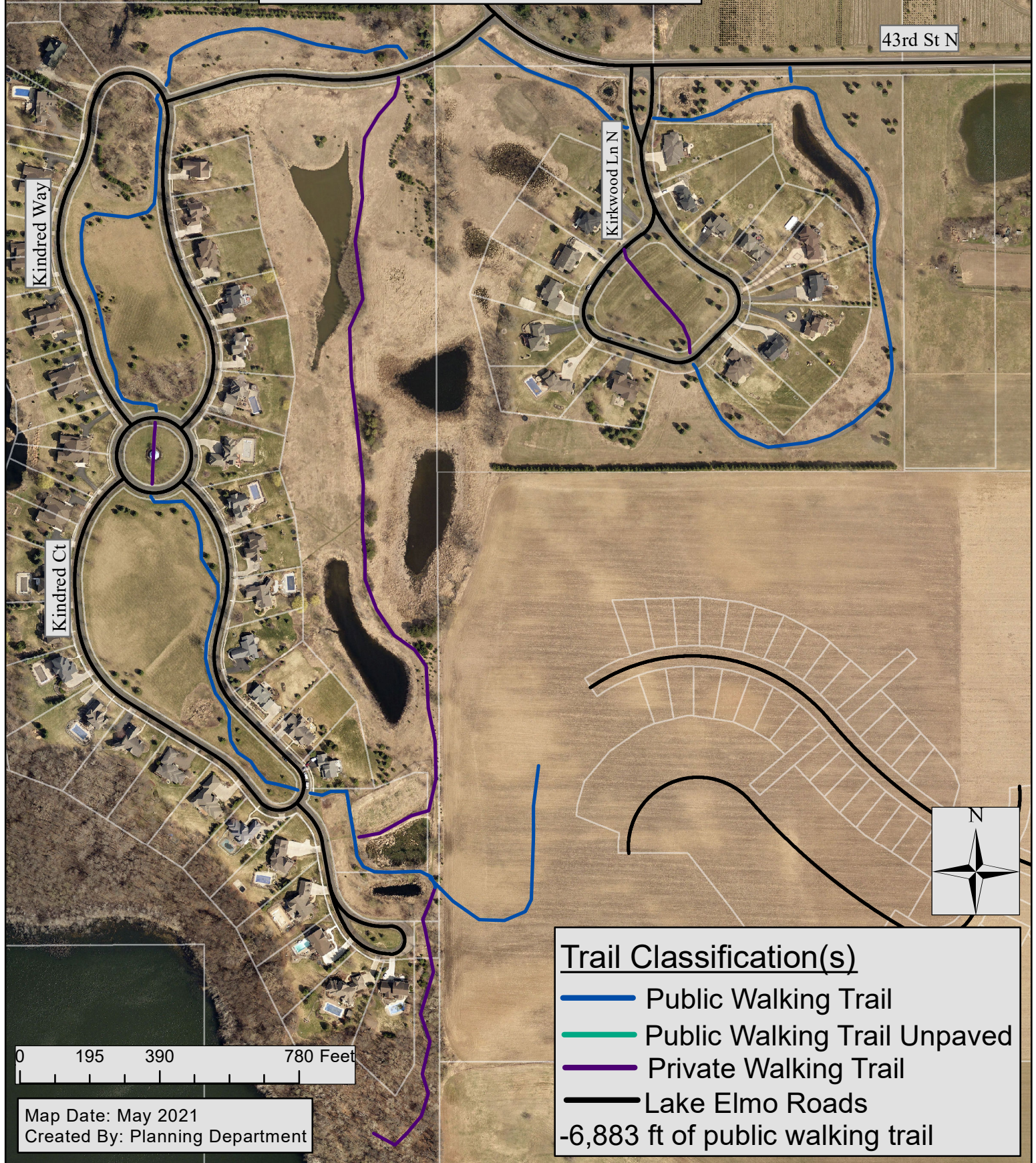
I am writing to express my support for the construction of as many pickleball courts in Lake Elmo as possible. I've made so many friends and Lake Elmo community connections because of the sport.

For the last 3 years, a group of locals have played at Lions Park. Our "Friends of Lake Elmo Pickleball" group has grown from 8 to 30 social players! The courts at Lions Park are in horrible condition, but we continue to play there because it is social and we celebrate each other's accomplishments.

A well used park is a safe park and pickleball courts will be well used!

Jenifer Watters
4180 Irvin Cir N
Jenifer.watters@gmail.com

Hamlet East Walking Trails



Tapestry At Charlotte's Grove Walking Trails

45th St N

Tapestry Bnd. N.

Tapestry Rd. N.

Trail Classification(s)

— Public Walking Trail

— Private Walking Trail

— Lake Elmo Roads

-5,673 ft of public walking trail

Map Date: May 2021
Created By: Planning Department

0 200 400 800 Feet

