



# fresh

Your Weekly Source for City News and Information

## Public Meetings Next Week

- Planning Commission Monday, June 27th 7:00 p.m.

[City Agendas and Minutes](#)



Visit our website



**The Brookfield building at 3880 Laverne Ave is closed and under construction. All City Services are available at City Hall, 3800 Laverne**

**Please drive slowly and watch for construction activity**



3800 Laverne Avenue North  
Lake Elmo, MN 55042

(651) 747-3900  
www.lakeelmo.org

### NOTICE OF MEETING

The City of Lake Elmo  
Planning Commission will conduct a meeting on  
Monday June 27, 2022  
at 7:00 p.m.

### AGENDA

1. Pledge of Allegiance
2. Approve Agenda
3. Approve Minutes – N/A
4. Public Hearings – N/A
5. New/Unfinished Business – N/A
6. Training
  - a. Role of the Planning Commission
  - b. Procedures
    - i. Variances
    - ii. Conditional Use Permits
7. Communications/Updates
  - a. June 21, 2022 City Council Actions
    - i. 8012 Hill Trail North Variance Request – Approved - Resolution 2022-064
    - ii. Zoning Text Amendment – Increased Building Setbacks in Certain Areas in the South Planning Area – Tabled for further consideration
    - iii. Zoning Text Amendment – Requirement for Mix of Uses in Mixed-Use Commercial and Mixed-Use Business Park Districts – Tabled for further consideration
    - iv. Zoning Text Amendment – Amend Article XIII Village Mixed Use District to Incorporate Two New Zoning Districts (V-MDR and V-HDR) in Compliance with the 2040 Comprehensive Plan – Approved - Ordinance 2022-10; Resolution 2022-067
8. Adjourn

\*\*\*Note: Every effort will be made to accommodate person or persons that need special considerations to attend this meeting due to a health condition or disability. Please contact the Lake Elmo City Clerk if you are in need of special accommodations.

---

### PARKS COMMISSION MEETING NOTICE

DATE: Monday, July 18, 2022  
TIME: 6:30 PM  
PLACE: Lake Elmo City Hall  
3800 Laverne Avenue North  
Lake Elmo MN 55042  
Phone: 651-747-3900

PURPOSE: The Lake Elmo Parks Commission would like to invite the residents of Lake Elmo to the upcoming Parks Commission meeting. The purpose of your resident attendance is to provide the Parks Commission with valuable feedback regarding future improvements of Tablyn Park and Demontreville Park.

If you wish to be heard and are unable to attend the meeting, please submit written or

electronic comments before the meeting. Written feedback may be submitted to the city by mail no later than 5:00 p.m. the Wednesday before the meeting or emailed to Ben Hetzel no later than noon on the day of the meeting.

Ben Hetzel, Lake Elmo City Planner  
Email: [bhetzel@lakeelmo.org](mailto:bhetzel@lakeelmo.org)  
Phone: 651-747-3911

---



## Watering Restrictions

Reminder: City ordinance allows for outdoor watering between the hours of **6PM and 5AM** and **follows an odd/even schedule**. Properties with even-numbered postal addresses may water, sprinkle, or irrigate their lawns only on even-numbered days. Properties with odd-numbers postal addresses may water only on odd-numbered days.

To help reduce water usage, and your water bill, the City of Lake Elmo is contributing up to 90% of the cost of smart irrigation controller devices. These smart controller devices can help save a household as much as 10,000 gallons of water per year!

[Find out more here](#)



# 34th ANNUAL



## LAKE ELMO 4th OF JULY KIDS PARADE

Decorate your tricycle, bicycle, wagon, stroller, or lawn tractor, and join the fun!

★ **11:00 - Get Festive!**

- Face-painting
- Temporary tattoos
- Flag give-away

★ **12:00 - Parade begins at Lake Elmo Ave and 32nd St**

- Begin lining up at 11:45
- Parade ENDS at Lions Park

★ **Post-Parade Ice Cream Social and Festivities at Lion's Park**

- Ice Cream donated & served by the Lake Elmo Rotary
- Dunk tank & minnow races
- Free 4th of July-themed

**Who is in the parade?** Participation in this parade is reserved for kids and families. Advertising-related participation is encouraged for the Lake Elmo Night Out gathering on August 2. Thank you for helping to preserve the traditions of this special event.

**Questions?** Contact Mayor Charles Cadenhead 651-300-9641



The City of Lake Elmo has begun participation in the State of Minnesota's Performance Measurement Program. This program began in 2010 for cities and counties to report on at least 10 performance measures annually as a way to aid residents, taxpayers, and state and local elected officials in determining the efficacy of counties and cities in providing services and measure residents' opinions of those services.

Click here to access reporting results



**FOR IMMEDIATE RELEASE**

April 7, 2022

**Contact:** Kristina Handt  
City Administrator  
651-747-3905

Email: [khandt@lakeelmo.org](mailto:khandt@lakeelmo.org)

**Lake Elmo Adopts Moratorium on New Plats due to Water Supply Issues Created by District Court Ruling**

At its April 5, 2022 meeting, the Lake Elmo City Council unanimously approved a moratorium on new plats in the city's low pressure water zone due to water supply concerns. The moratorium, which goes into effect April 8th and lasts for up to one year, will prevent developers from submitting applications for both residential and commercial development in roughly a quarter of the city.

Last year the City of Lake Elmo, applied for an amendment to its water appropriations permit to increase the allowed water usage due to rapid growth over the last few years. Citing the 2017 Ramsey County District Court Order 62-CV-13-2414 regarding water levels of White Bear Lake, the DNR denied the city's request.

"We are trying to abide by the Met Council's growth requirements and provide for the public health and safety of our community," said Lake Elmo Mayor Charles Cadenhead. "But our efforts are being hampered by a court ruling that is endangering the livelihood of our community. It should be noted that the trigger elevation in the court ruling is based on the recreational use of White Bear Lake and was not made for environmental reasons."

At the hearing Tuesday evening, the council heard from a number of landowners and developers who have been working on projects for a year or more. The moratorium will halt progress on nearly 800 residential units and 100s of thousands of square feet of new commercial, business and warehouse space. Residents also expressed concern about limiting the moratorium to just a portion of the city. While the council has not ruled out expanding the moratorium in the future, they are taking this initial step to protect the most vulnerable area of the water system.

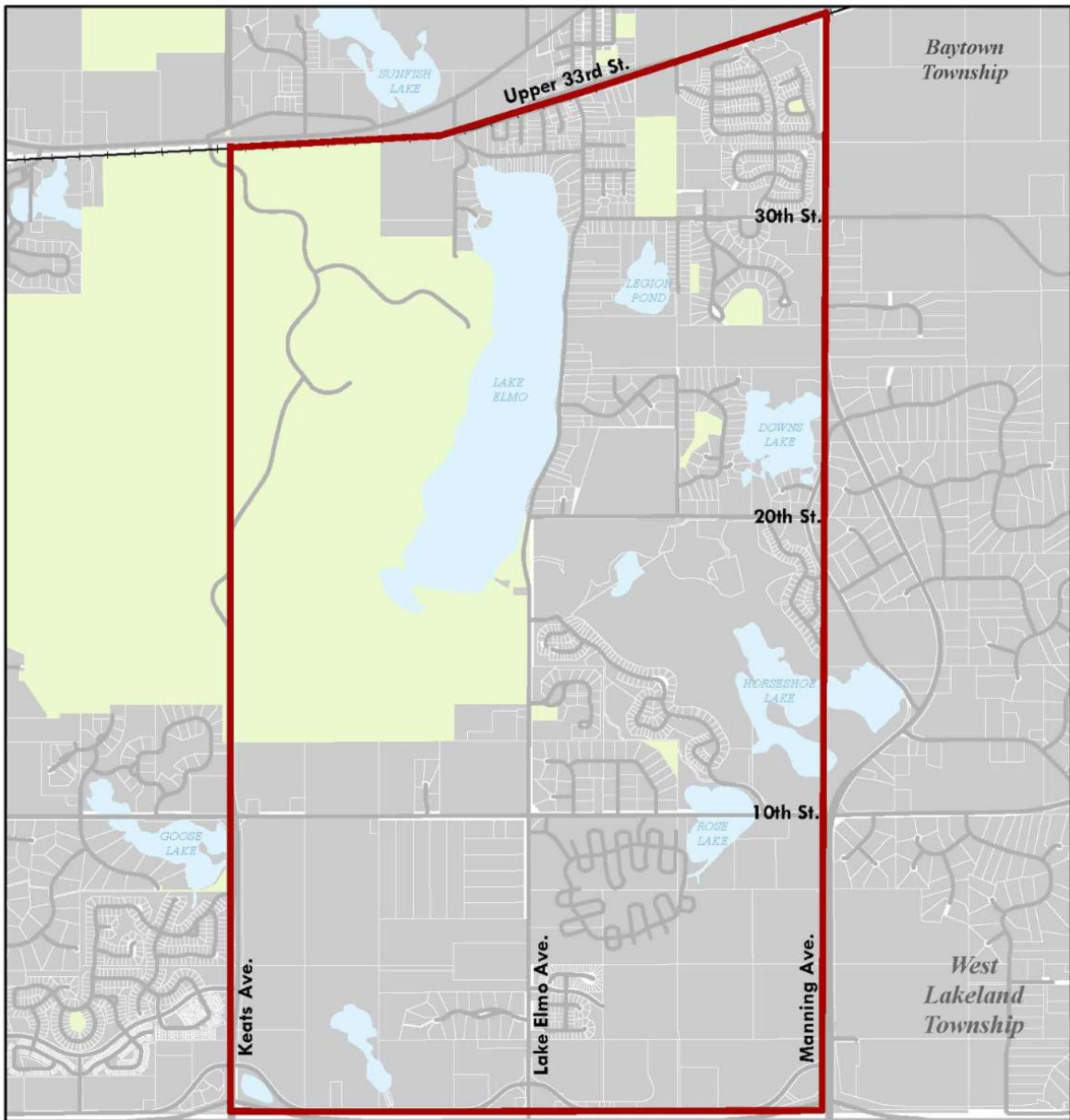
The City, along with a number of other east metro communities affected by the Ramsey County District Court ruling, are seeking a legislative solution. SF 3055 (Housley) was heard in the Senate Environment and Natural Resources Policy Committee in February but the House companion (HF3880, Lillie) was later returned to the author. The bill would require the DNR to approve permit amendment requests for appropriations and new wells from communities within 5 miles of White Bear Lake provided that request is consistent with a DNR approved water supply plan prior to 2021. Most communities updated their water supply plans in conjunction with the 2040 comprehensive plans in 2020 to ensure proper infrastructure planning that aligns with the community's growth plan through 2040.

"Given the PFAS contamination and lack of access to a surface water source, a legislative solution is needed to solve the water supply issues in Lake Elmo," said Cadenhead. "Without action by our state elected officials, the city's hands are tied and we have no option but to look for ways to limit demand to this vital resource for communities"

Attached: Ordinance 2022-03

---

3800 Laverne Avenue North \* Lake Elmo \* Minnesota \* 55042 \* 651.747.3900

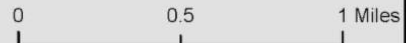


# CITY OF LAKE ELMO WATER PRESSURE LOW PRESSURE ZONE



— LOW PRESSURE ZONE BOUNDARY

Map Date: March 2022  
Created By: Planning Dept.





## LAKE ELMO FARMER'S MARKET

A 501/C/3 NON-PROFIT

Market runs 9am to 1 pm on Saturdays.

- Market will be open rain or shine unless inclement weather of high winds or lightning.
- Staff will be present on all Market days. Any concerns or questions please seek staff out.
- We are seeking a bread vendor and cheese vendor, if interested please contact Jill at 651-261-4493 please.
- There are still spots open for Youth Vendors!

*Last year we had over 5600 visitors and customers at the Market last year!*

For more information call Jill Lundgren at 651-261-4493 Like us on Facebook "Lake Elmo Farmers Market" and watch for updates!

*Business and Community Working Together/ Lake Elmo Farmer's Market is a 501c3*

---

**Reminder: Solicitation for profit is prohibited by ordinance in Lake Elmo. We're receiving a lot of calls regarding solicitation in the wake of recent storms, no door to door sales are permitted by the City. Peddling is considered a nuisance, and can be reported to Washington County Sheriff's Department at 651-439-9381.**

---



## How will Lake Elmo change in 50 years?

Part of the construction of the Lake Elmo City Center is a time capsule project. We're inviting residents to share their predictions for Lake Elmo in the next 50 years. Submission slips are available at City Hall and City events for you to tell us how you think we'll change between now and 2073, so you tell us:

- How many people will live in Lake Elmo in 2073?
- What will downtown look like?
- How are City services delivered?
- What else does the future hold?

Fill out a slip and we will put them into a time capsule in the City Center, and come back in 2073 to see how your predictions turn out!

**The City of Lake Elmo is accepting artifacts from Lake Elmo History to display in the new City Center. If you have something you'd like displayed, contact Kristina Handt, City Administrator at 651-747-3905**

**[khandt@lakeelmo.org](mailto:khandt@lakeelmo.org)**



# COUNTY HIGHWAY 13 (IDEAL AVENUE)

Project Update



## When is this project expected to occur?

This project is expected to start in late-March or early-April with tree removals and private utility relocations. After private utilities have relocated, roadway work will start and is anticipated to be completed fall of 2022.

## What hours will workers be in the area? Will they work on weekends?

Normal working hours for this project will be Monday through Friday from 7:00 AM to 7:00 PM and on Saturdays from 9:00 AM to 5:00 PM. No work will be allowed on Sundays.

## Will there be dust? Noise?

Residents that live near the project should expect to see dust and hear noise from construction equipment during normal working hours. To help limit the amount of dust in the air, water or a dust palliative will be sprayed on gravel surfaces.

## Will Ideal Avenue be closed during construction?

Two-way traffic will remain on Ideal Avenue during tree removal and private utility relocation; however, these lanes may be shifted and narrowed. Once roadway work starts, segments of Ideal Avenue will be closed. See the Construction Staging and Detour Route Graphics for more information.



## CONSTRUCTION STAGING



STAGE 1



STAGE 2



STAGE 3

Allan Brandt | Washington County Project Engineer | 651-430-4348 | Allan.Brandt@co.washington.mn.us

## The City of Lake Elmo is on Nextdoor!

In an effort to reach as much of the community as possible we've joined Nextdoor. We will use our public agency page to post news and important updates for residents.

[Find us here!](#)



Wondering how your business stacks up to others? Need data on customers, suppliers and other demographic information? Want to know how to maximize your advertising dollars? Washington County CDA has a new tool to help small businesses. Check it out today: [Sizeup Small Business](#)



**Good news at Lake Elmo Library: the Book Club is back!** The Lake Elmo Library Book Club will meet on June 2 at 6:30 p.m. to discuss our first selection, "Bel Canto" by Ann Patchett. Copies of this title are ready for checkout at the library. Meetings will be held at the same time on the first Thursday of each month. The Lake Elmo Book Club will be reading titles within the genres: classics, literary fiction, local interest, and award winners (with some exceptions as voted on by The Club). Book selections will be available one month prior to the meetings. We look forward to seeing you!

**Join Lake Elmo Library for special storytimes at the Sally Manzara Interpretive Nature Center at Sunfish Lake Park.** These events will be at 10:30 a.m. on the third Tuesdays of the month from May to September. Please bring your own chairs or blankets for the outdoor patio venue!  
**Join us, too, at the Lake Elmo Library for our Family Storytimes, Fridays at 10:30 a.m.** For exact dates and times, please visit [washcolib.org/storytime](http://washcolib.org/storytime).

**Hold on to your beach hat!** Lake Elmo Library is getting ready for our Summer Reading program starting June 2. Check out the Library's website, [washcolib.org](http://washcolib.org), for information on Summer Reading 2022 programs and events for children, teens, and adults. Summer is always

**Lake Elmo Library**

3537 Lake Elmo Avenue N  
Lake Elmo MN 55042  
651-275-8515  
WashCoLib.org

**Hours:**

Monday: 10 a.m. - 4 p.m.  
Tues., Wed., Thurs.: 12-8 p.m.  
Friday: 10 a.m. - 4 p.m.  
Saturday: 10 a.m. - 2 p.m.



## **Business Retention and Expansion Program**

The Lake Elmo Economic Development Authority (LEEDA) will be kicking off a Business Retention and Expansion Program in March. LEEDA members will be reaching out to schedule visits with members of our business community to learn more about their business, what's going well, what could be done differently and how LEEDA can help them continue to grow and prosper in Lake Elmo.

With around 300 businesses in Lake Elmo and only 6 LEEDA commissioners, this campaign will take many months and likely continue into 2023. Commissioners will be focusing on businesses in the Old Village area first and then moving towards the I-94 corridor later this year. If you have any questions or would like to schedule a visit contact Kristina Handt at 651.747.3905 or [khandt@lakeelmo.org](mailto:khandt@lakeelmo.org)



# Need a Trusted **Business Advisor?**

This program provides free and confidential one-on-one assistance from MCCD's experienced staff, customized to meet the specific needs of each entrepreneur in the creation, growth, and success of their business.

## **Technical Assistance & Lending**

- Business & strategic planning
- Marketing & communications planning
- Regulatory, tax, licensing, & accounting training
- Financial assessment
- Referrals to critical professional services
- Access to capital



## **We want to help you succeed!**

To learn more about a free personalized plan for your business contact:



[info@mccdmn.org](mailto:info@mccdmn.org)  
(612) 789-7337

[www.mccdmn.org/open-to-business](http://www.mccdmn.org/open-to-business)



The Sally Manzara Interpretive Nature Center is open every day  
Visit <https://sminc-lake-elmo.org/> for details.



The Sally Manzara Interpretive Nature Center in Lake Elmo's Sunfish Lake Park is operated by a non-profit organization for the benefit of the entire community. We offer programs and events for people of all ages, and have "adopted" the Park in the City's program. This work is all funded by donations. Thank you for your support!

Are you looking for ways to help at the Sally Manzara Interpretive Nature Center?

- We are looking for volunteer reception help. If you have an open morning or afternoon (even if it is only once a month) and you enjoy talking with friendly people and offering them a cup of coffee, you could be a receptionist volunteer. Training and volunteer background checks are provided.

Are you looking for something to do this week? Is it raining or too hot to be outside? Come inside where it is dry and cool and see our updated displays.



# Outdoor Nature Storytime

## at Sally Manzara Interpretive Nature Center

10:30—11:00 AM

on the  
3rd Tuesday of  
each month

April 19 | May 17

June 21 | July 19

Aug. 16 | Sept. 20

Sunfish Lake Park

10000 Stillwater Lane N.



Lake Elmo Library and Sally Manzara Interpretive Nature Center invite you to join us in singing, talking, reading, writing, and playing at this inclusive storytime for families with young children. Each month we will explore a different theme related to the natural world.

Storytimes will be held outside on the patio, so please bring something to sit on and dress accordingly. In case of severe weather, we will move inside the nature center.

Recommended for developmental ages 0-6 and their grownups (siblings are also welcome). Registration not required.

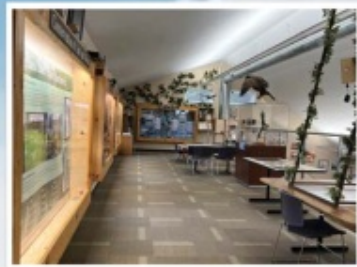
Washington  
County  
LIBRARY

Lake Elmo Library  
3537 Lake Elmo Ave.  
Lake Elmo, MN 55042  
651-275-8515  
WashCoLib.org



Sally Manzara  
Interpretive Nature Center  
10000 Stillwater Lane N.  
Lake Elmo, MN 55042  
651-408-2838  
Sminc-lake-elmo.org

# EXHIBITS & INDOOR EDUCATIONAL SPACE



**KEEP US GROWING**



## The City of Lake Elmo is Seeking Applicants for Multiple Committees

The City of Lake Elmo is seeking interested residents to serve on two committees:

- EDA
- Planning Commission

[More Information Available Here](#)

- At the November 3 City Council Meeting the City Council awarded bids for the new City Center and Public Works Addition.
- At the January 4, 2022 City Council Meeting the City Council awarded bids for painting at the new City Center
- The Lake Elmo City Council and Staff held a Groundbreaking Ceremony on April 30, 2022

Regular updates and documents are available [here](#).



## CITY OF LAKE ELMO COMBINED CITY HALL & PUBLIC SAFETY FACILITY

The new Lake Elmo City Hall / Public Safety Facility combines City Hall staff and functions, the entire Fire Department, and a satellite office for the Washington County Sheriff's department. This co-location involves renovating and expanding the City-owned Brookfield Office building to concentrate civic resources into a single structure at the historic core of the city. In addition, the Public Works facility will also be expanded to accommodate City growth and expanded service needs.



**TOTAL ANTICIPATED PROJECT COST:** \$14,600,000  
**DESIGN COMPLETION:** Late summer 2021  
**CONSTRUCTION COMPLETION:** Fall of 2022







### MEETING THE DEMANDS OF AN EVOLVING FIRE SERVICE

Lake Elmo currently has two fire stations, Fire Station #1 at 3510 Laverne Ave. N. and Fire Station #2 at 4259 Jamaica Ave. N. This project will consolidate these two stations into a single, state-of-the-art station that will meet the needs of our community and firefighters today and into the future. The building is designed to accommodate increasing call volumes, meet the demands for training and to support our evolving role as all hazard responders.

Due to the changing environment of fire department staffing needs and the impacts of that in relation to incident response times and budget responsibility, the fire department is consolidating to a single station which will allow the department the ability to transition to a staffing model that provides 24/7 coverage from the single station. This change requires the updated facilities like staff dorm rooms, day room and kitchen area, fitness room, staff workspaces and offices.

Educational materials provided by the City of Lake Elmo

For more information, visit our website: [www.lakeelmo.org](http://www.lakeelmo.org) or contact Kristina Handt, Administrator at [KHandt@lakeelmo.org](mailto:KHandt@lakeelmo.org)



The current fire stations are too small to accommodate modern apparatus and equipment and cannot provide adequate health protections for our firefighters.

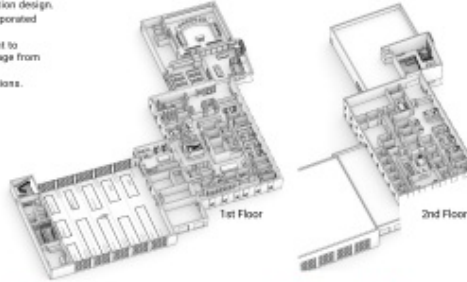
### A FUNCTIONAL FIRE STATION

A new, single, state-of-the-art station will meet the needs of our community and firefighters today and into the future. Designed to accommodate our evolving role as all-hazard responders it will:

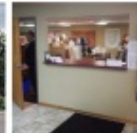
- Modernize our facilities following best practices in station design.
- Enhance firefighter training with training features incorporated into the building.
- The addition of living quarters will allow the department to transition to a staffing model that provides 24/7 coverage from the single station.
- Improve response times and overall department operations.

### DESIGNED FOR FIREFIGHTER HEALTH AND SAFETY

- Distinct spaces to properly decontaminate gear and equipment. Focus to reduce staff exposure to firefighting carcinogens and other toxic materials.
- Properly ventilate the apparatus bay to reduce staff exposure to diesel exhaust and other harmful fumes.
- Space that supports the physical and mental health of staff.
- Clear separation between public and private spaces.



Lake Elmo City Hall, built in 1986, is a very small 2,806 SF. There are insufficient offices for all staff members and the restrooms are not accessible. The council chambers are small, do not provide sufficient space for department heads or members of the public, and lack modern technological updates. City staff have long outgrown this building and have since moved into the Brookfield Building located across the parking lot.



The Brookfield Building was purchased by the City in 2018 as a method of maintaining city functions next to the outgrown City Hall at a lower cost alternative to new construction. It was constructed in 1980 and will require a major overhaul to increase its useful life.



### AN EXPANDED AND IMPROVED CITY HALL

- Improved service accessibility
- Community room available for public use
- New council chambers with updated technology
- Additional conference rooms
- Co-locate Washington County Sheriff staff
- Office space for growth of city staff
- Accessible restrooms.

