



fresh

Your Weekly Source for City News and Information

Public Meetings Next Week:

- Parks Commission Meeting Monday, April 17th, 6:30 p.m.
- City Council Meeting Tuesday, April 18th, 7:00 p.m.
- Board of Appeal and Equalization Wednesday, April 19th, 5:00 - 7:00 p.m.



[Visit our website](#)

[Join us on Nextdoor](#)





*Our Mission is to Provide Quality Public
Services in a Fiscally Responsible Manner in
Partnership with our Community.*

NOTICE OF MEETING

**City of Lake Elmo Parks Commission
3800 Laverne Avenue North
April 17th, 2023 at 6:30 pm**

AGENDA

1. Call to Order
2. Pledge of Allegiance
3. Approve Agenda
4. Approve Minutes
 - a) March 20, 2023
5. Public Comment
6. Tablyn and Pebble Courts Bid Reveiw
7. Communication
 - a) ADA Compliance
 - b) Corajod Shades Donation
 - c) Baseball Field RFP
 - d) Dog Park
8. Adjourn

****Note: Every effort will be made to accommodate person or persons that need special considerations to attend this meeting due to a health conditjon or dsability. Please contact the Lake Elmo City Clerk if you are in need of special accommodatjons.*



NOTICE OF MEETING
City Council Meeting
Tuesday, April 18, 2023 7:00 P.M.
City of Lake Elmo | 3800 Laverne Avenue North
AGENDA

- A. Call to Order/Pledge of Allegiance
- B. Approval of Agenda
- C. Public Comments/Inquiries
- D. Presentations
Washington County Commissioner Gary Kriesel
- E. Consent Agenda
 1. Approve Payments and Disbursements
 2. Approve City Center/Public Works Pay Request #15
 3. Accept Donation of AEDs from Washington County Sheriff's Office – *Resolution 2023-037*
 4. Authorize Mutual Aid Agreement between the City of Lake Elmo Fire Department and the Fire Departments of St. Croix County, Wisconsin and Washington County, Minnesota
- F. Regular Agenda
 5. Accept Bids and Award Contract for the 2023 Street Improvements – *Resolution 2023-038*
 6. Receive Council Direction on Cardinal Ridge Watermain Extension Design Alternatives
 7. Authorize Preliminary Design and Feasibility Report for the 2024 Street and Utility Improvements – *Resolution 2023-039*
- G. Council Reports
- H. Staff Reports
1st Quarter Dashboards and Financials
- I. Adjourn

ASSESSMENT NOTICE

Important Information Regarding Property Assessments This may affect your 2024 property taxes.

Notice is hereby given that the Board of Appeal and Equalization of the City of Lake Elmo shall meet on Wednesday, April 19, 2023, 5:00 – 7:00 p.m. at the Lake Elmo City Hall, 3800 Laverne Avenue North, Lake Elmo MN 55042. The purpose of this meeting is to determine whether taxable property in the jurisdiction has been properly valued and classified by the assessor, and also to determine whether corrections need to be made.

If you believe the value or classification of your property is incorrect, please contact your assessor's office to discuss your concerns. If you are still not satisfied with the valuation or classification after discussing it with your assessor, you may appear before the Local Board of Appeal and Equalization. The board shall review the valuation, classification, or both if necessary, and shall correct it as needed. Generally, an appearance before your local board of appeal and equalization is required by law before an appeal can be taken to your county board of appeal and equalization. For more information, call the Washington County assessor's office at 651-430-6175.

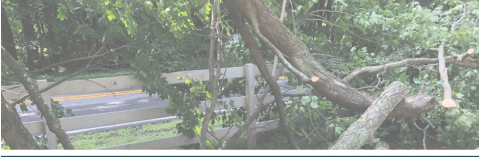
Given under my hand this 6th day of March, 2023

Julie Johnson

Clerk of the City of Lake Elmo

Temporary Debris Management Site

Belwin Conservancy
15601 Hudson Road North | Lakeland, MN



Available to Washington County residents only



BELWIN



Temporary Tree Debris Drop-off Site

Beginning Saturday April 15th, Washington County will open a temporary tree debris drop-off site for RESIDENT USE ONLY (no commercial use) at Belwin Conservancy. Washington County residents are invited to bring their tree debris from the ice/snow storm event that occurred on April 1, to the temporary site located at Lucy Winton Bell Athletic Fields at Belwin Conservancy, 15601 Hudson Rd. N., Lakeland, MN 55043. There is no fee for residents to drop storm debris at this site. The hours of operations for the site are:

Sat 8am – 2pm
Sun 8am – 2pm
Wed 8am – 2pm
Fri 8am – 2pm

The City of Lake Elmo would like to extend a huge thank you to **Capra's Utilities Inc.** for generously donating their services to abandon the septic system and connect the City Hall building to city sewer service last week. We really appreciate the support of our area businesses!



Lake Elmo Arbor Day Celebration

Saturday April 29th, 2023



In Celebration of Arbor Day, the City of Lake Elmo's Public Works is sponsoring a Tree Giveaway on April 29th from 9:00am – 11:00am at Lake Elmo Public Works Building 3445 Ideal Ave. N .

*Please bring your own plastic bags for transporting the bare root trees. *

www.arborday.org



Public invited to open house on Highway 36/Lake Elmo Avenue improvements April 19

The public is invited to an open house to review and provide feedback on design alternatives that will improve the intersection of Highway 36 and Lake Elmo Avenue, or County Highway 17.

The open house will be 4 to 6 p.m. Wednesday, April 19, at River Valley Church. The church is at 5900 Lake Ave. N., Lake Elmo.

The project will seek to overcome the current deficiencies at the intersection, and improve its safety and capacity. Design alternatives will also improve bicycle, pedestrian, and ADA facilities in this area.

This is the second open house in the planning process for intersection improvements. Information from the previous open house and past newsletters may be found on the Washington County website at www.co.washington.mn/LakeElmoAvenue.



Help Support Lions Park for the 2023 Season!

We hope you will consider supporting the Lions Park ball field by purchasing a sign for the season that will hang on the outfield fencing. Advertising your business and/or cause with a vintage style sign helps create a vintage feel at the ball field and shows your support for this amenity that has benefitted our youth and community for decades. Your advertising funds are used solely for improvements to the Lions Park ball field area; none of the funds are used for general city expenses.

To participate, all you need to do is send your contact information and a \$500 check payable to the City of Lake Elmo-Lions Park Sign 2023, 3880 Laverne Ave N, Lake Elmo, MN 55042 by April 30, 2023. We are not able to take payment by credit card at this time. After it is received, staff will contact you and support you through the process of producing the sign and getting it placed for the season. The cost of designing and producing the sign is included in the \$500 fee.

We hope that you will consider a sign subscription at Lions Park for the 2023 season! Again, thank you for your support of this community asset.

With Spring around the corner, we are in high gear with park reservations. To access all reservations, please visit the website via the link below and use the drop down menu on the top right side to move between park calendars. The city's park use policy can also be found on the reservation page.

[Park Calendars](#)



Compost Bin and Rain Barrel Sale



Washington County is excited to partner with the Recycling Association of Minnesota to sell discounted compost bins and rain barrels to Washington County residents. Home Composter compost bins are \$56 and Rain Catcher rain barrels are \$70. Pre-ordered items must be picked-up at the Environmental Center within 90 days of purchase.

[Order online](#)

Disposal Directory

A screenshot of the Disposal Directory website. The header is green with the text "Disposal Directory" and options for "English" and "Share". Below the header, there are two icons: a magnifying glass labeled "Directory" and a question mark labeled "Need help?". A search bar is present with the placeholder text "Type the name of a waste item and we'll tell you how to recycle or dispose of it." and a green "Search" button. Underneath, there is a section titled "Popular Searches" with four circular icons: a mattress labeled "Mattresses & box springs", a set of chairs labeled "Furniture", a roll of carpet labeled "Carpet & padding", and a small electronic device labeled "Small household electronics".

Reduce-Reuse-Recycle!

It is that time of year again when we start thinking about spring cleaning. Are you sure about what is trash and what can be recycled, and where to take it? Washington County has a new interactive disposal directory located here: [Disposal Directory](#). Try it out! It is a great tool for identifying what and where you can donate, recycle, or dispose of unwanted items.

Street Sweeping

Public Works will be sweeping streets Wednesday, April 12th through Friday, April 21st.

Please minimize on street parking and keep garbage containers behind the curb or in your driveway. Thank you for your cooperation!





WONDERING WHAT YOU CAN DO FOR EARTH DAY?

WE'VE GOT YOU COVERED!

Get your **Lake Elmo** sweatshirt **AND** make a local impact at the same **time**. establish salon is teaming up with Washington County Parks to plant trees in Lake Elmo Park Reserve. All proceeds of this year's Moss Green sweatshirt will purchase the trees for planting. Because for Earth Day, it's all about coming together as a community and **taking care of home!**

establish
SALON
3515 LAKE ELMO AVENUE N
LAKE ELMO, MN 55042
(651) 770 - 3515

Washington
County
PARKS

IN-STORE
AT ESTABLISH SALON
3515 LAKE ELMO AVENUE N

ONLINE
ESTABLISHSALON.COM OR
LAKEWATERCLOTHING.COM

Get involved!

The City of Lake Elmo is seeking interested residents to serve on the Parks Commission and Economic Development Authority (EDA). The Parks Commission meets 1 time per month and the EDA meets quarterly. No experience is necessary! Application and more information is available on the City's website: [click here](#) , or contact City Administrator Kristina Handt for more information: khandt@lakeelmo.org.



Report Streetlight Outage

Xcel Energy maintains streetlights on



public streets in Lake Elmo. If you notice a streetlight that is burned out or malfunctioning, please use the link below to report the issue. It's helpful to note the location with nearest cross streets and the pole number if you are on foot and able to make note of it.

[Click Here to Report Streetlight Outage](#)

MPCA Utilizing New Technology to Clean Water in Lake Elmo

Minnesota Pollution Control Agency has placed equipment at Tablyn Park that utilizes a new technology to remove contamination from groundwater. Click below to view a KSTP news story featuring an interview with Councilmember Jeff Holtz.

[KSTP Story](#)



Washington County staff and the City of Lake Elmo staff recently received a tour of the experimental SAFF unit located at Tablyn Park. The MPCA indicated they are currently successful in removing 95% of the PFOS from the 30,000 gallons of water they pumped each day from the Jordan aquifer. Preparations have begun to start filtering surface water in Raleigh Creek.



The Brookfield building at 3880 Laverne Avenue is closed and under construction. All City Services are available at City Hall, 3800 Laverne Avenue

Please drive slowly and watch for construction



Running a company of any size can be a challenge. For a small business owner, it can be a lonely one too. Wouldn't it be helpful to have a group of peers where you have a forum for exchange of information, ideas, insights, and perspectives?

That's what our WHAT'S NEXT CEO Roundtable is all about - a place where you can work through your specific business issues with fellow small business owners. This is not a networking event. It is a peer-to-peer group that provides a secure environment for open, confidential discussions about concerns, problems, and opportunities a member may be facing.

Our What's Next CEO Roundtable is a professional business meeting consisting of small business Presidents, Owners, and CEOs from Washington County. The group will consist of 10 to 12 members from non-competing companies.

The purpose of the group is to provide a gathering for the exchange of information, ideas, insights, and perspectives. All meetings are completely confidential which provides a secure environment for open discussions about concerns, problems, and opportunities a member may be facing. On occasion, guest speakers will present ideas and solutions to roundtable members.

The value of joining and attending our monthly CEO Roundtable is to learn from peer-to-peer experiences through a facilitated roundtable conversation. You benefit by learning from each other's achievements and mistakes.

For more information click here: [What's Next CEO](#)

The Sally Manzara Interpretive Nature Center is open every day
Visit <https://sminc-lake-elmo.org/> for details.



The Sally Manzara Interpretive Nature Center in Lake Elmo's Sunfish Lake Park is operated by a non-profit organization for the benefit of the entire community. We offer programs and events for people of all ages, and have "adopted" the Park in the City's program. This work is all funded by donations. Thank you for your support!

April is bee season at the Sally Manzara Interpretive Nature Center! You may not see them, but bees are already active in their hives. The queen is producing eggs and repopulating the hive, and the bees that have wintered over are moving around, eating honey, getting ready for the warm weather. If you've ever thought of beekeeping, we'll be running a workshop later in the month for beginning beekeepers.

- April Bee Programs – On Saturday, April 15 and Sunday, April 16, we will be hosting our April Interpretive Drop-In events, all about bees! Our staff nature educators will teach people about what bees do to get ready for spring, how honey gets made, you name it! On Thursday, April 20, at 7 p.m. we will be welcoming beekeeper Karen Voy to the SMINC as part of our adult education series for a Beginning Beekeeping workshop. Karen will share tips about what beginning beekeepers need to get started and offer advice for getting a new hive up and running. The course is \$10, and pre-registration is required.
- We are so excited for our upcoming Summer Camps! It is not too late to register, sign up now before spots are full. <https://sminc-lake-elmo.org/summer-camp-registration/>
- Adopt-a-Tree! As part of the SMINC's Earth Day celebration, we are launching a new Adopt-a-Tree program! For \$5 you will receive an oak seedling, 12-18 inches tall, a plastic bag to keep the roots moist before planting, the stake and protective tube for planting it, with a number label. Each tree will get a unique number, and we will provide GPS latitude and longitude values so you can find it in the future. Any time the Park is open, you can visit your tree to water it, measure it, count the leaves, and photograph it. When you send us this information by email, we will add it to the database, so it can be used to study the success of the Restoration of Sunfish Lake Park project.



SALLY MANZARA INTERPRETIVE NATURE CENTER SUMMER CAMPS²⁰²³



The Sally Manzara Interpretive Nature Center is located next to Sunfish Lake Park in Lake Elmo, Minnesota. The park offers 284 acres of natural area and over 8 miles of trails through forest, wetlands, and prairie.

GET YOUR KIDS OUTDOORS EXPLORING NATURE THIS SUMMER!

SUMMER CAMPS

Monday - Thursday
9:00 a.m. - noon

Small group, outdoor camps in nature run by experienced instructors and include interpretive education, games, crafts, free play and hikes.

Wildflower Painting Camp

Ages 7-10, June 13, 15, 20, 22

Critter Camp #1

Ages 5-7, June 26-29

Outdoor Adventures Camp

Ages 6-8, July 10-13

Nature Drama Camp

Ages 9-12, July 24-27

Bees & Butterflies Camp

Ages 6-8, July 31-August 3

Critter Camp #2

Ages 5-7, August 14-17

WONDER WEDNESDAYS

Wednesdays

9:00 a.m. - 2:00 p.m.

Ages 5-8

Our one day Wonder Wednesdays Camps are small group, outdoor camps in nature run by experienced instructors and will offer interpretive education, crafts, hikes and free play.

June 7 - All About Birds

June 21 - Animal Superheroes

July 5 - Water Play

July 19 - Raptors

August 9 - Nature Art

August 23 - Honeybees



LITTLE EXPLORERS

Mondays

9:30 a.m. - 11:30 a.m.

Ages Birth-5

Adults and their child/ren will be guided by a Pre-K Educator in an outdoor welcome circle focused on rotating themes and followed with open-ended play materials allowing children to explore their own interests in nature.

June 5 - All About Birds

June 19 - Animal Superheroes

July 3 - Water Play

July 17 - Raptors

August 7 - Nature Art

August 21 - Honeybees

Camp information and registration: sminc-lake-elmo.org/summer-camp-registration/

For more information email camps@sminc-lake-elmo.org or email Programs Coordinator Ami Voeltz at ami.voeltz@sminc-lake-elmo.org.



Sally Manzara Interpretive Nature Center is operated by Friends of Lake Elmo's Sunfish Lake Park, a 501(c)(3) nonprofit.

651-408-2838 | e-mail: info@sminc-lake-elmo.org | sminc-lake-elmo.org

BEEKEEPING BASICS

W/ KAREN VOY



651.408.2838



info@sminc-lake-elmo.org

Thursday, April 20, beekeeper Karen Voy will be at the SMINC in Lake Elmo to give a Beekeeping Basics class, where you will learn about everything you need to get started. Upon completion of her presentation, attendees will have opportunities to sign up for more formal beekeeping workshops. Bring your calendars!

Class time is 7 p.m. on Thursday, April 20, \$10 per person, pre-registration is required. To sign up for this event go to: <https://sminc-lake-elmo.org/adult-education-presentation.../>

DATE

Thursday, April 20th

TIME

7p.m. – 8 p.m

LOCATION

Sally Manzara Interpretive
Nature Center, Lake Elmo MN

COST

\$10/person

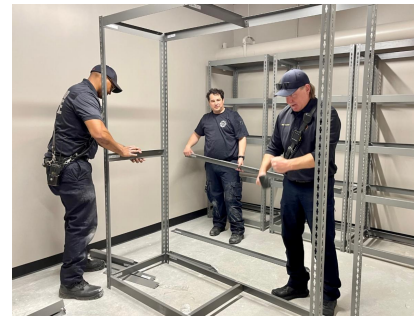


Lake Elmo Library
3537 Lake Elmo Avenue N
Lake Elmo MN 55042
651-275-8515
WashCoLib.org

Hours:
Monday: 10 a.m. - 4 p.m.
Tues., Wed., Thurs.: 12-8 p.m.
Friday: 10 a.m. - 4 p.m.
Saturday: 10 a.m. - 2 p.m.



Public Facilities Project Update



Finishing work on the interior of the City Center building this week included delivery of the appliances and continued work on flooring and tile. On the exterior, paint colors were tested on the building and preparations have begun for parking lot pavement. Firefighters worked on assembling shelving in fire storage areas in their spare time. As you can see from all the building materials in the fire bays, there is a lot of work to be done but crews are making great progress toward our anticipated occupancy date in early summer.

Additional information is available on the City's [City Center](#)



- 1 New City Hall Entrance
- 2 New Fire Station Expansion
- 3 Council Chambers/Community room addition
- 4 Parking
- 5 Fire Department Parking
- 6 City Hall/Sheriff
- 7 Laverne Avenue

LEO A DALY

CITY OF LAKE ELMO COMBINED CITY HALL & PUBLIC SAFETY FACILITY

The new Lake Elmo City Hall / Public Safety Facility combines City Hall staff and functions, the entire Fire Department, and a satellite office for the Washington County Sheriff's department. This co-location involves renovating and expanding the City-owned Brookfield Office building to concentrate civic resources into a single structure at the historic core of the city. In addition, the Public Works facility will also be expanded to accommodate City growth and expanded service needs.



TOTAL ANTICIPATED PROJECT COST: \$14,600,000
DESIGN COMPLETION: Late summer 2021
CONSTRUCTION COMPLETION: Fall of 2022



City of Lake Elmo | 3800 Laverne Avenue North, Lake Elmo, MN 55042

[Unsubscribe](mailto:unsubscribe@lakeelmo.org) jjohnson@lakeelmo.org

[Update Profile](#) | [Constant Contact Data Notice](#)

Sent by jjohnson@lakeelmo.org powered by



Try email marketing for free today!